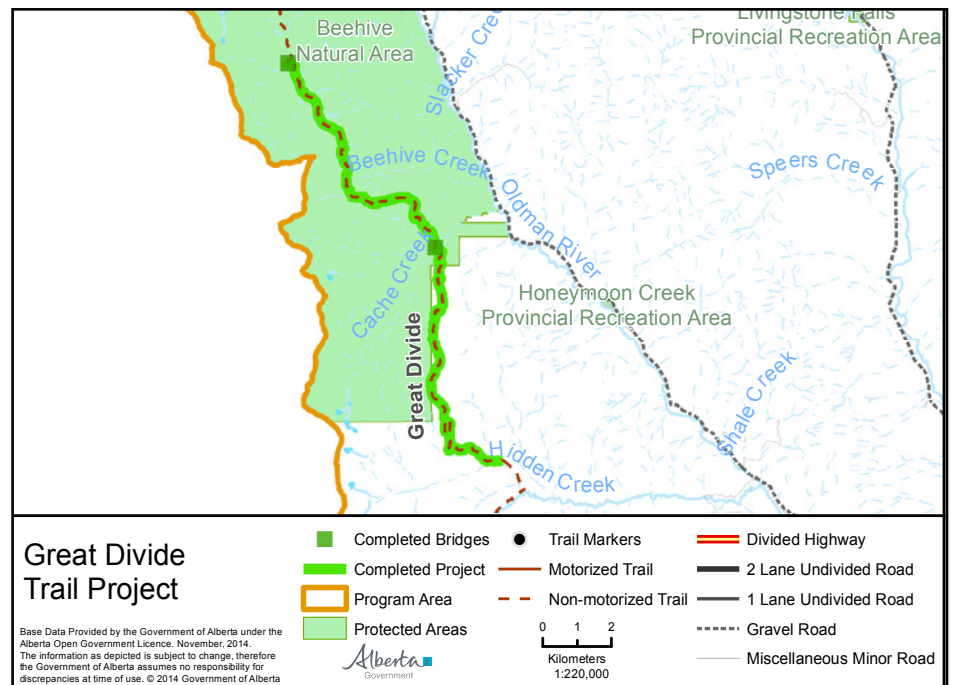
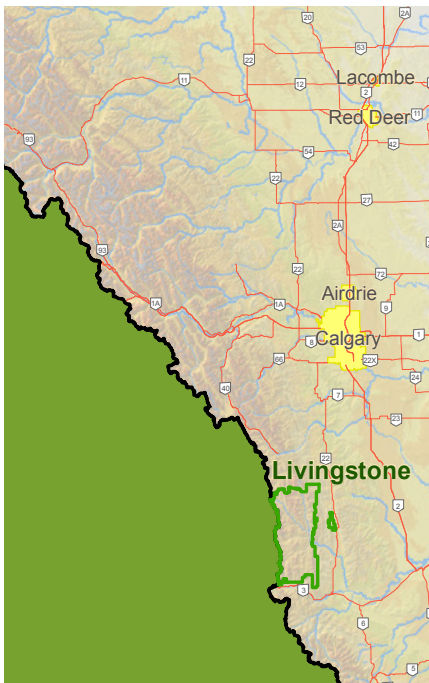


Backcountry Trail Flood Rehabilitation Program



Great Divide Trail

Competition Date: July 2015



In partnership with:



Great Divide Trail

The Great Divide trail is a non-motorized trail running through the Rocky Mountains with fantastic views and scenery. Two bridges were washed out over Lyall and Cache Creek, both within the protected Beehive Natural Area.

Bridge materials were flown in by helicopter from the nearby Gap Fire Base. The “Tired Ass Ranch” also had pack mules carry in tools and other supplies. A BTFR trail crew along with the Great Divide Trail Association volunteers hiked in to both sites to build replacement pedestrian bridges. A few additional drainage features were put in with hand tools as well, and some trimming of branches and deadfall was required to accommodate equestrian users.



Bridge over Cache Creek



Two volunteers working on a crib to support one end of the bridge



A replacement for the washed out bridge



A BTFR trail crew member putting on the finishing touches to the Lyaill Creek bridge



Testing the Lyaill Creek bridge



Volunteers and trail crew enjoying the scenery on the Great Divide Trail