

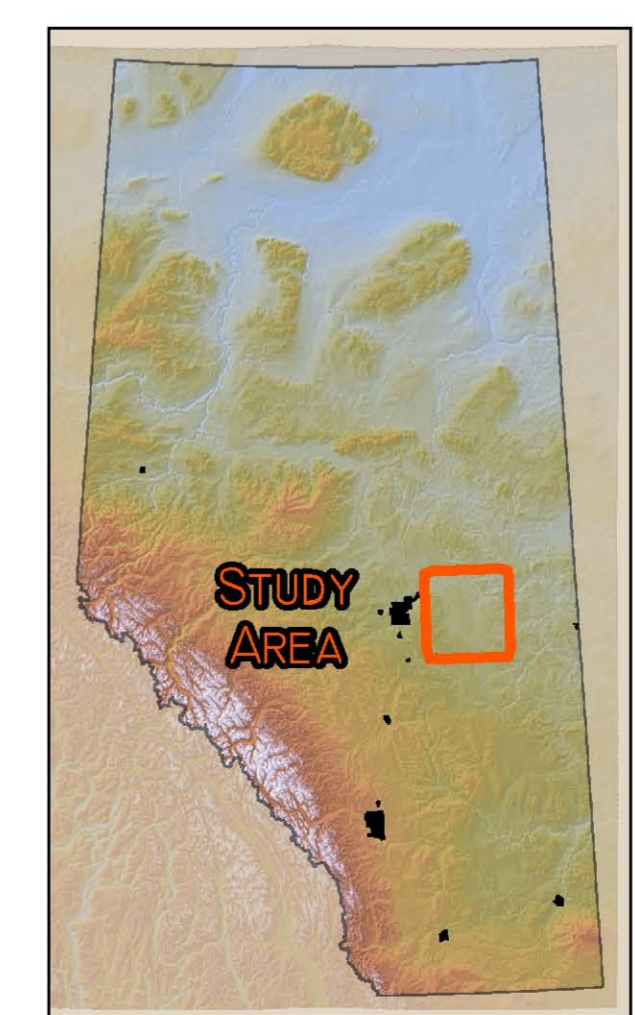
Legend

Land System	Land System Description	Major Soils	Minor Soils	Acidification Sensitivity
Bawff Plain 05.4a.06	Undulating landscape. Thin Black Solonetz developed on medium textured till. Minor soils include Chernozems and Gleysols.	Killam (Black Solodized Solonetz)	Heisler (Solonchic Black Chernozem) Gleysols/ Water	Low - 37% Cultivated - 63%
Beaverhill Lake 05.4a.16	Large water body. Minor soils include Gleysols.	Water	Gleysols/ Water	Low - 37% Cultivated - 5% Wetland, Water - 58%
Bruce Plain 05.4a.04	Undulating landscape. Thin Black Solonetz developed on medium textured till. Minor soils include Gleysols.	Killam (Black Solodized Solonetz)	Dayland (Black Solod) Gleysols/ Water	Low - 66% Cultivated - 34%
Chipman Plain 05.4a.17	Undulating landscape. Black Solonetz and Black Chernozems developed on medium textured till. Minor soils include Gleysols.	Camrose (Black Solodized Solonetz) Angus Ridge (Eleviated Black Chernozem)	Gleysols/ Water Kavanagh (Black Solodized Solonetz)	Low - 47% Cultivated - 53%
Dayland Plain 05.4a.05	Undulating landscape. Thin Black Chernozems developed on medium textured till. Minor soils include Gleysols.	Heisler (Solonchic Black Chernozem)	Elнора (Orthic Black Chernozem) Foreman (Solonchic Humic Gleysol)	Low - 37% Cultivated - 63%
Delph Upland 06.2b.12	Hummocky landscape. Black Chernozems and Dark Gray Luvisols developed on medium textured till. Minor soils include Gleysols.	Angus Ridge (Eleviated Black Chernozem) Uncas (Dark Gray Luvisol)	Rolly View (Orthic Dark Gray Chernozem) Gleysols/ Water	Low - 21% Cultivated - 79%
Edward Upland 06.2b.05	Landscape is hummocky and duned. Brunisols and Black Chernozems developed on coarse textured sediments. Minor soils include Luvisols and Organic.	Primula (Eleviated Eutric Brunisol) Redwater (Orthic Dark Gray Chernozem)	Uncas (Dark Gray Luvisol) Misc. Organics	Low - 64% Moderate - 17% Sensitive - 17% Cultivated - 2%
Eldorena Plain 06.2a.11	Undulating landscape with some duned. Black Chernozems and Brunisols developed on coarse textured sediments.	Peace Hills (Teric Mesisol) Primula (Eleviated Eutric Brunisol)	Manatokan (Teric Mesisol) Mundare (Eleviated Black Chernozem)	Low - 34% Moderate - 24% Sensitive - 17% Cultivated - 25%
Ferrow Plain 05.3d.27	Hummocky landscape. Black Chernozems developed on medium textured till. Minor soils include Gleysols.	Angus Ridge (Eleviated Black Chernozem)	Rolly View (Orthic Dark Gray Chernozem) Angus Ridge (Eleviated Black Chernozem)	Low - 51% Cultivated - 47% Wetland, Water - 2%
Hairy Hill Plain 05.5b.13	Hummocky landscape. Dark Gray Chernozems developed on medium textured till. Minor soils include coarse textured soils.	Rolly View (Orthic Dark Gray Chernozem)	Redwater (Orthic Dark Gray Chernozem) Ponoka (Eleviated Black Chernozem)	Other - 19% Cultivated - 81%
Hilliard Plain 05.5b.14	Undulating landscape with some valley bottom. Black Chernozems developed on medium textured till. Minor soils include Solonetz and Gleysols.	Angus Ridge (Eleviated Black Chernozem)	Camrose (Black Solodized Solonetz) Gleysols/ Water	Low - 25% Cultivated - 75%
Inland Plain 05.5b.05	Undulating landscape with some valleys with confined floodplain. Black Chernozems and Black Solonetz developed on medium textured till. Minor soils include Gleysols.	Norma (Solonchic Black Chernozem) Angus Ridge (Eleviated Black Chernozem) Camrose (Black Solodized Solonetz)	Gleysols/ Water	Low - 31% Cultivated - 69%
Irys Plain 05.4a.03	Undulating landscape. Thin Black Solonetz developed on medium textured till and till over softrock. Minor soils include Gleysols.	Killam (Black Solodized Solonetz) Shonts (Black Solodized Solonetz)	Gleysols/ Water Dayland	Low - 54% Cultivated - 46%
Islet Upland 05.6.01	Hummocky landscape. Dark Gray and Dark Gray Luvisols developed on medium textured till. Minor soils include Gleysols, Chernozems and fine textured soils.	Cooking Lake (Orthic Gray Luvisol) Uncas (Dark Gray Luvisol)	Gleysols/ Water Mico (Orthic Dark Gray Chernozem)	Low - 81% Cultivated - 12% Wetland, Water - 7%
Little Beaver Plain 05.4a.14	Undulating landscape. Black Chernozems developed on medium textured till. Minor soils include Solonetz and Gleysols.	Norma (Solonchic Black Chernozem)	Camrose (Black Solodized Solonetz) Gleysols/ Water	Low - 53% Cultivated - 46% Wetland, Water - 1%
Lonestar Plain 05.4a.02	Undulating landscape. Thin Black Solonetz developed on medium textured till. Minor soils include Chernozems.	Killam (Black Solodized Solonetz)	Heisler (Solonchic Black Chernozem) Dayland (Black Solod)	Low - 58% Cultivated - 42%
Kathwin Plain 05.5b.15	Undulating landscape. Black Chernozems developed on medium textured till. Minor soils include Gleysols.	Angus Ridge (Eleviated Black Chernozem)	Ponoka (Eleviated Black Chernozem) Gleysols/ Water	Low - 15% Cultivated - 85%
Katchemut Upland 05.4a.19	Hummocky landscape. Black Chernozems developed on medium textured till. Minor soils include Gleysols.	Angus Ridge (Eleviated Black Chernozem)	Norma (Solonchic Black Chernozem) Gleysols/ Water	Low - 26% Cultivated - 74%
Musidora Upland 06.2a.01	Undulating landscape. Dark Gray and Black Chernozems developed on coarse textured sediments. Minor soils include Brunisols and Organic.	Heilwell (Orthic Dark Gray Chernozem) Peace Hills (Orthic Black Chernozem)	Primula (Eleviated Eutric Brunisol) Misc. Organics	Low - 45% Moderate - 25% Sensitive - 8% Cultivated - 24%
Norma Plain 05.5b.09	Undulating landscape. Black Chernozems and Black Solonetz developed on medium textured till. Minor soils include coarse textured soils.	Angus Ridge (Eleviated Black Chernozem) Peace Hills (Black Solodized Solonetz)	Mundare (Orthic Black Chernozem)	Low - 17% Moderate - 8% Cultivated - 75%
North Saskatchewan River Valley 05.00.05	Valley bottom with some water bodies and confined floodplain. Regosols developed on undifferentiated material. Minor soils include Chernozems and Gleysols. Significant eroded soils present.	Eroded with Black Chernozems	Penhold (Orthic Black Chernozem) Gleysols/ Water	Low - 57% Cultivated - 16% Wetland, Water - 27%
Pakan Plain 06.2b.17	Undulating landscape. Dark Gray Luvisols and Dark Gray Chernozems developed on medium textured till. Minor soils include Gleysols.	Ponoka (Eleviated Black Chernozem)	Hobbema (Eleviated Black Chernozem) Kavanagh (Black Solodized Solonetz)	Low - 28% Cultivated - 72%
Partridge Plain 05.3d.09	Undulating landscape. Black Chernozems developed on medium textured till. Minor soils include Gleysols.	Angus Ridge (Eleviated Black Chernozem)	Rolly View (Orthic Dark Gray Chernozem) Gleysols/ Water	Low - 20% Cultivated - 80%
Pointe-aux-Pins Plain 05.3d.11	Undulating landscape. Black Chernozems developed on fine textured water-laid sediments.	Malmö (Eleviated Black Chernozem)	Angus Ridge (Eleviated Black Chernozem) Looma (Orthic Dark Gray Chernozem)	Low - 25% Cultivated - 72% Other - 3%
Redclay Plain 06.2b.08	Undulating landscape with some inclined < 10% exposed bedrock. Black Chernozems developed on medium textured till and medium textured water-laid sediments.	Angus Ridge (Eleviated Black Chernozem) Ponoka (Eleviated Black Chernozem)	Rimbey (Orthic Dark Gray Chernozem) Rolly View (Orthic Dark Gray Chernozem)	Low - 25% Cultivated - 70% Wetland, Water - 1%
Redwater Plain 05.3d.05	Undulating landscape with some duned. Black Chernozems developed on coarse textured sediments. Minor soils include Brunisols.	Mundare (Orthic Black Chernozem)	Primula (Eleviated Eutric Brunisol) Peace Hills (Orthic Black Chernozem)	Low - 15% Moderate - 28% Sensitive - 7% Cultivated - 46%
Royal Park Plain 05.5b.04	Undulating landscape. Black Chernozems developed on medium textured till and medium textured material over medium textured till. Minor soils include Gleysols.	Angus Ridge (Eleviated Black Chernozem) Hobbema (Eleviated Black Chernozem)	Gleysols/ Water	Low - 21% Cultivated - 79%
Ryley Plain 05.4a.15	Undulating landscape. Black Solonetz developed on medium textured till. Minor soils include Chernozems and Gleysols.	Camrose (Black Solodized Solonetz)	Norma (Solonchic Black Chernozem) Gleysols/ Water	Low - 51% Cultivated - 49%
Thorhid Plain 06.2c.25	Undulating landscape. Black Chernozems developed on medium textured water-laid sediments. Minor soils include Solonetz.	Spedden (Orthic Dark Gray Luvisol) Kathwin (Orthic Dark Gray Chernozem)	LaCorey (Orthic Gray Luvisol) Gleysols/ Water	Low - 39% Cultivated - 61%
Vegreville Plain 05.5b.06	Undulating landscape with some floodplain. Black Solonetz and Black Chernozems developed on medium textured till. Minor soils include Gleysols.	Camrose (Black Solodized Solonetz) Angus Ridge (Eleviated Black Chernozem)	Gleysols/ Water Misc. Solonchic and Black Chernozems	Low - 50% Cultivated - 50%
Watt Lake Plain 05.5b.12	Undulating landscape with some valleys with confined floodplain. Black Chernozems and Black Solonetz developed on medium textured till. Minor soils include Gleysols.	Angus Ridge (Eleviated Black Chernozem) Camrose (Black Solodized Solonetz)	Hairy Hill (Rego Humic Gleysol) Norma (Solonchic Black Chernozem)	Low - 30% Cultivated - 67% Wetland, Water - 3%
Whitford Plain 05.5b.08	Undulating landscape with some level and numerous water bodies. Black Chernozems developed on medium textured till. Minor soils include coarse and fine textured soils.	Angus Ridge (Eleviated Black Chernozem)	Ukalta (Orthic Black Chernozem) Navarre (Gleyed Black Chernozem)	Low - 21% Cultivated - 79%

Numerical code denotes AGRASID 3.0 identification number for the Land System.

- Major Road
- Railway
- River
- Lakes
- Township
- Land System Boundary
- Land Cover Type
 - Grassland
 - Shrubs
 - Trees
 - Cultivated Lands, Other Land
 - Water Bodies
- Sensitivity to Acid Inputs
 - Low
 - Low-Moderate Mix
 - Low-Moderate-Sensitive Mix

Soil information from the AGRASID 3.0 database (Alberta Soil Information Centre 2007), and land cover information from the Prairie Farm Rehabilitation Administration.



Alberta Environment
ALBERTA RESEARCH COUNCIL

LAND SYSTEMS, LAND COVER AND SOIL SENSITIVITY TO ACID INPUTS IN THE EDMONTON 83H EAST HALF GRID CELL

DATE: SEPTEMBER 2007
JOB No: EE311631
GIS FILE: ARC_83H_EDMEASTHALF
PDF FILE: ARC_83H_EDMEASTHALF

PROJECTION: UTM ZONE 12
DATUM: NAD83

PREPARED BY: amec