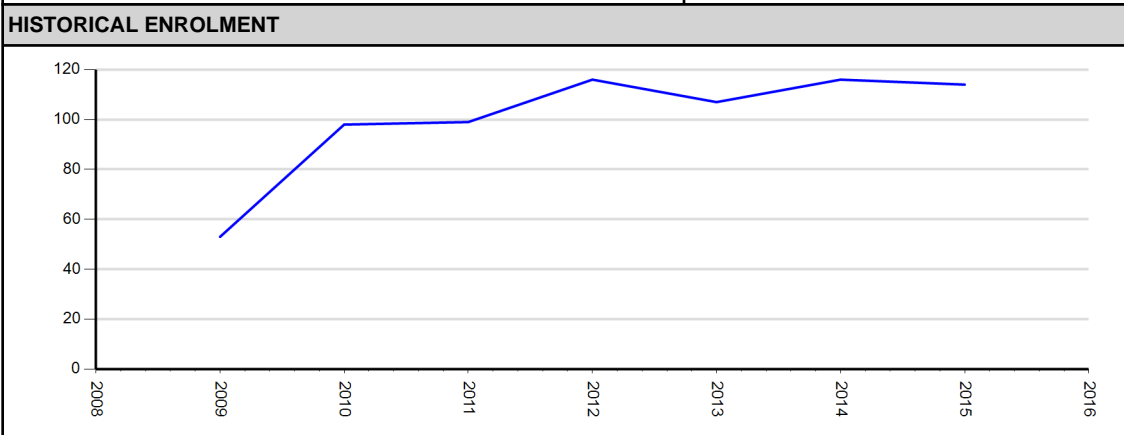


Valhalla School Foundation		Public Charter	
Zone 1 Services			
Address and Phone	Box 148 Valhalla Centre AB T0H3M0 (780) 356-2370		
Superintendent	John Picard		
Chair, Board of Directors	Jolene Kochendorfer		
No. of Directors, Including Chair	4		
Description of Charter	Valhalla Community School focuses on rural leadership and the acquisition of German as a Second Language. The school fosters creativity, critical thinking, inquiry and experiential learning through the school wide implementation of Direct Instruction. To facilitate the development of rural leadership skills, students engage in public speaking, are actively involved in community events and observe and participate in local government activities.		
Original Approval Date	Rated Capacity	Approved Enrolment Cap	No. of Sites
August 14, 2008	189	110	1
Current Term End Date	Funded Students Head Count (2015/2016)	Certificated FTE Staff (2015/2016)	Grade Range
31 August, 2018	97	8	K-09

FINANCES		
2015/2016 Estimated Operational Funding	Adjusted Accumulated Surplus from Operations (ASO) (As of August 2015)	ASO as a % of Total Expenses
\$1,187,000	\$16,610	1.1%

STUDENT DEMOGRAPHICS	
Funded Students Head Count	97
% of Provincial Funded Student	0.02%
ESL Funded Students	34
FNMI Funded Students	0



**ANNUAL EDUCATION RESULTS REPORT AND THREE YEAR EDUCATION PLAN**

[Combined Three Year Education Plan and Annual Education Results Report](#)

CLASS SIZE INITIATIVE (average student count per classroom)	Grade Grouping	2015/2016
	K-3	14.3
	4 - 6	11.0
	7 - 9	11.9
	10 - 12	N/A

Data Current as of Apr 23, 2016 Accountability Pillar Results	Achievement	Improvement
Safe and Caring	Blue	Yellow
Program of Studies	Yellow	Yellow
Education Quality	Blue	Yellow
Drop Out Rate	Yellow	Yellow
High School Completion Rate (3 yr)		
PAT: Acceptable	Orange	Yellow
PAT: Excellence	Red	Yellow
Diploma: Acceptable		
Diploma: Excellence		
Diploma Exam Participation Rate (4+ Exams)		
Rutherford Scholarship Eligibility Rate		
Transition Rate (6 yr)		
Work Preparation	Blue	Green
Citizenship	Blue	Yellow
Parental Involvement	Blue	Yellow
School Improvement	Blue	Yellow
-	Orange	Yellow
	Green	Blue
		+

<b>CAPITAL</b>				
<b>Approved Modulars 2016/2017 School Year</b>				0
<b>Current Capital Projects</b>	<b>School</b>	<b>Location</b>	<b>Grade</b>	<b>Current Capacity (Change)</b>