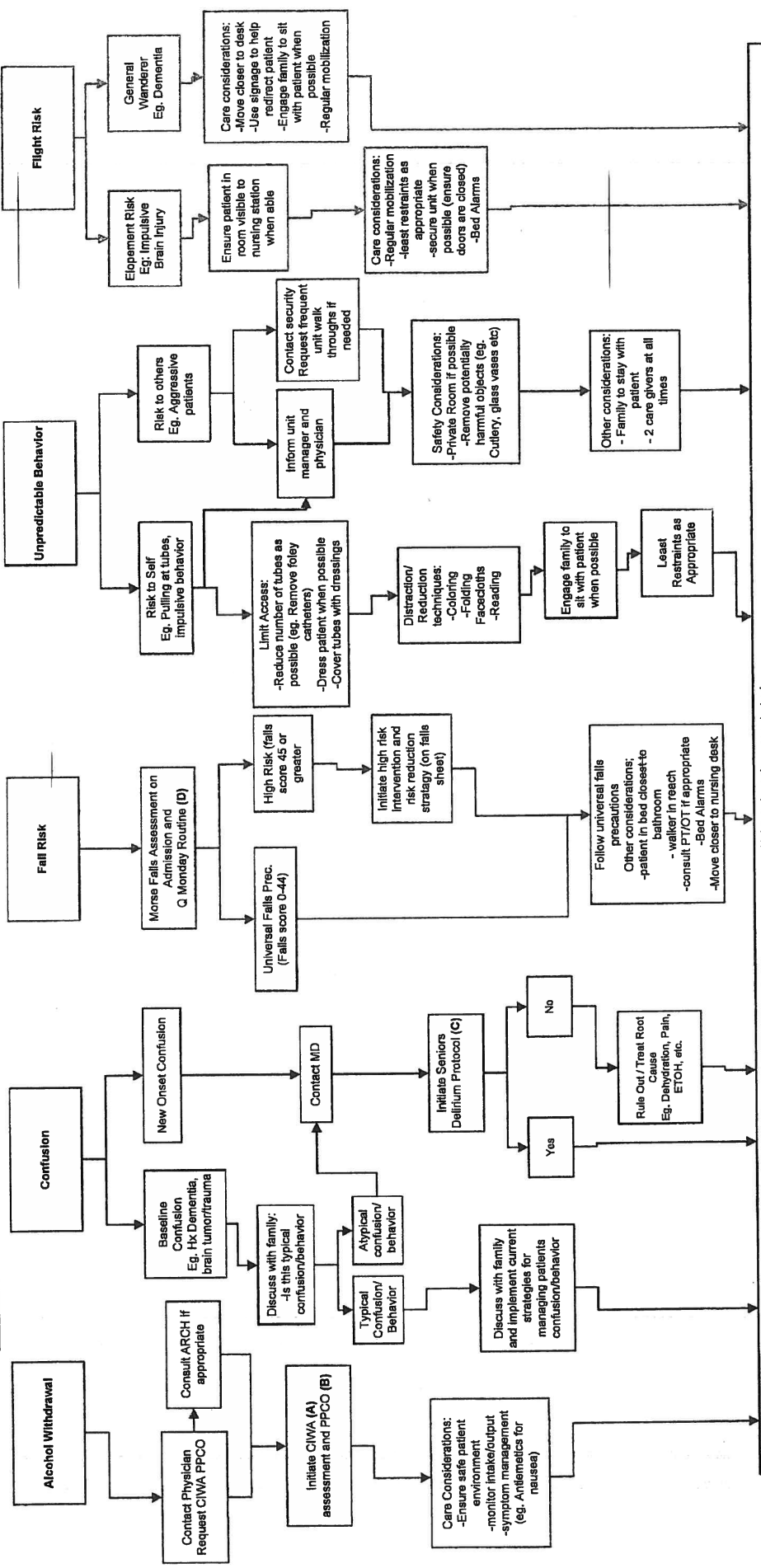


Care Plan Strategies Decision Tree (Bolded letters refer to attached forms)

The following algorithm is intended to provide general guidance for the management of patients identified as high safety risks. The nursing interventions and strategies can be used independently or in combination with each other and patients may fall into multiple categories simultaneously.



Universal nursing care strategies:
 -Q1H patient checks
 -Ensure safe patient environment (limit clutter, call bell in reach)
 -Regular mobilization
 -Engage family to support patient care
 -Move closer to nursing desk
 -Regular toileting (Q2H minimum)
 -Include in shift report for continuity of care.
 Patient/family involvement and education is key in successfully managing above safety risks.

After following above strategies if patient still unsafe, use unit based HCA on day shift. Consider HCA constant on Evening / Nights
HCA constants must be assessed every shift