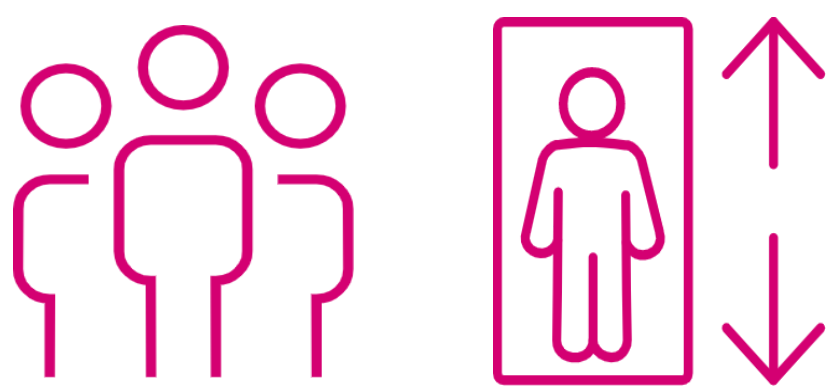


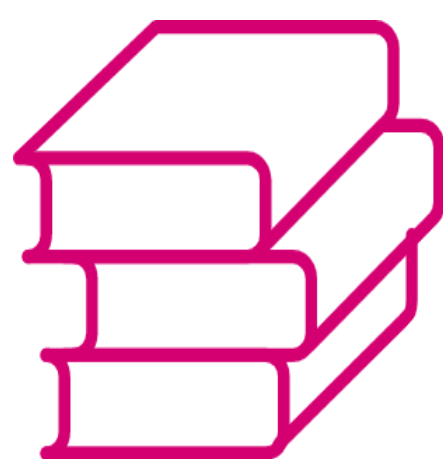
# Preventing psychological hazards in the workplace

## Barriers



### Stigma

Includes discrimination, prejudice, judgement, labels, isolation, and stereotypes



### Lack of Knowledge

Allows psychological hazards and stigma to persist



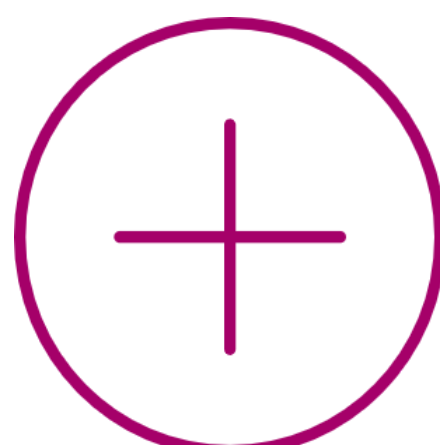
### Aversion to Change

Workplaces may not address hazards due to concerns about cost, confidentiality, privacy or human rights



### Education

Is the key to understanding and addressing these barriers



### Prevention

Access tools and resources to grow your knowledge base

Scan to learn more

