

Pneumococcal Polysaccharide 23 –Valent Immunization Program Decision Tree for Pharmacists

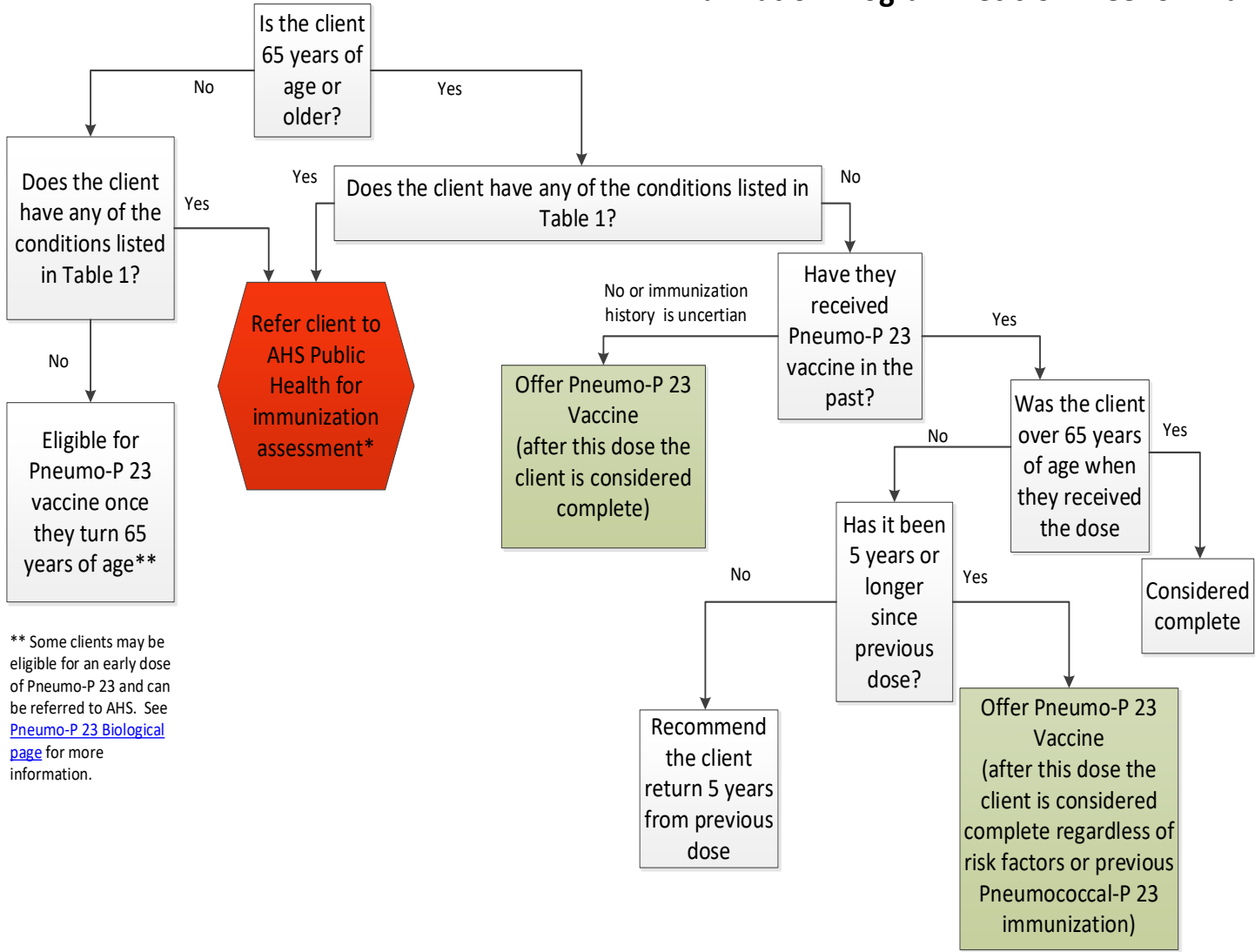


Table 1
Medical Conditions that Require Further Assessment at AHS Public Health*

- Asplenia/hyposplenism
- Chronic cerebral spinal fluid (CSF) leak
- Chronic neurologic conditions that may impair clearance of oral secretions
- Nephrotic syndrome
- Cochlear implants (candidates and recipients)
- Congenital immune deficiencies involving any part of the immune system
- Hematopoietic stem cell transplant (HSCT) recipients
- Hepatic Cirrhosis
- HIV infection
- Immunosuppressive therapy
- Malignant neoplasms including leukemia, lymphoma
- Sickle cell disease and other hemoglobinopathies
- Solid organ or islet transplant (SOT) candidates and recipients

* The client may require other immunizations due to their chronic health conditions and consideration for appropriate vaccine spacing is required.

** Some clients may be eligible for an early dose of Pneumo-P 23 and can be referred to AHS. See [Pneumo-P 23 Biological page](#) for more information.

December 7, 2018

