



Labour Force Statistics

December 2014 Aboriginal Population Off-Reserve Package

Package Includes:

- Information for all Aboriginal people, First Nations and Métis
- Working age population, labour force, employment, unemployment and corresponding rates
- Full-time, part-time, public and private sector and self-employed breakdowns
- Gender and age breakdowns
- Edmonton, Calgary and rest of Alberta breakdowns
- Industry, occupational and educational attainment information

Release Date: January 9, 2015

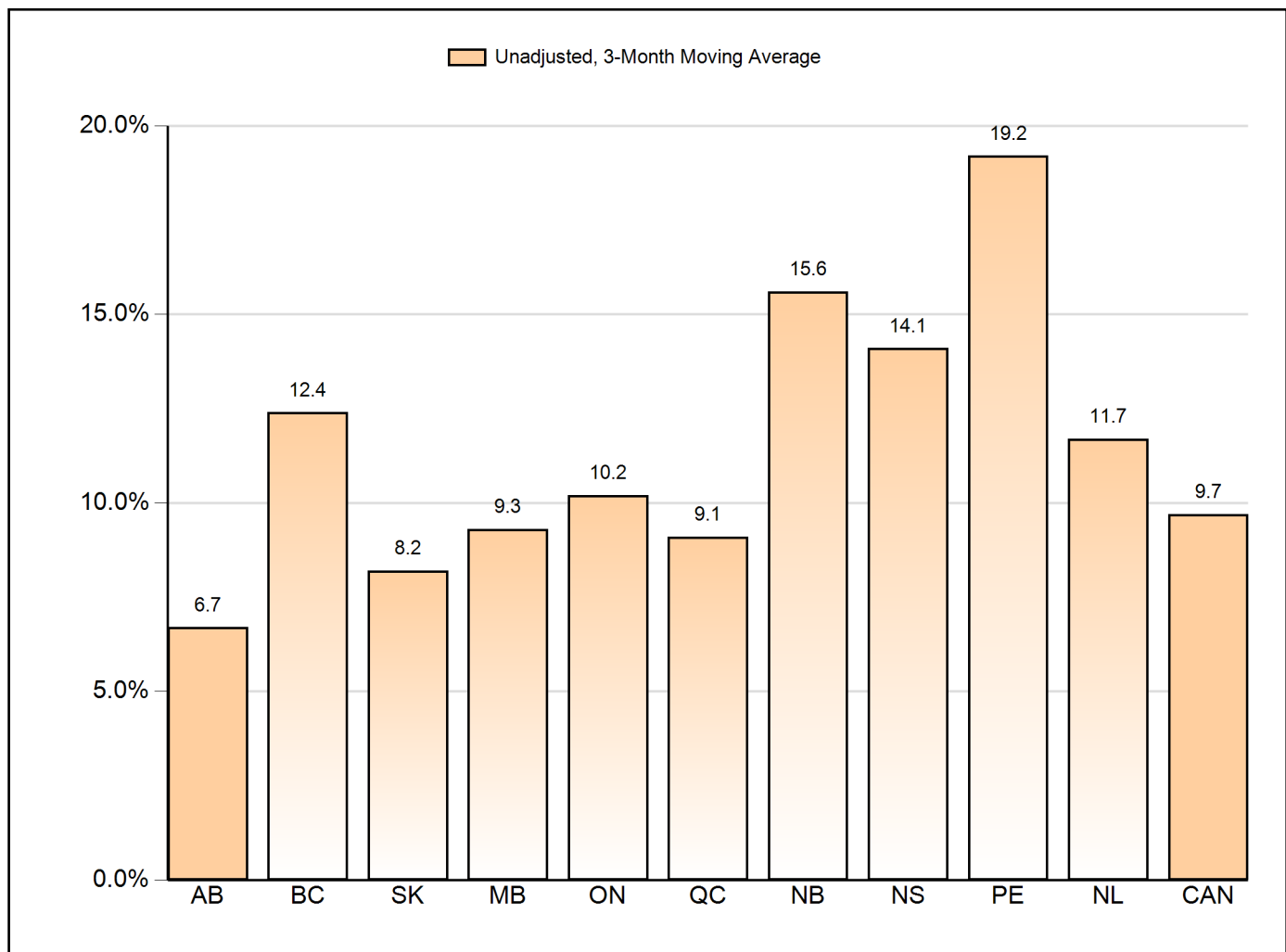
Next Release Date: February 6, 2015

Aboriginal People Off-Reserve Unemployment Rate, Canada and Provinces Unadjusted, 3-Month Moving Average

	December 2014	November 2014	Monthly Change	December 2013	Yearly Change
Alberta	6.7%	6.3%	0.4%	7.7%	-1.0%
British Columbia	12.4%	13.4%	-1.0%	12.6%	-0.2%
Saskatchewan	8.2%	8.4%	-0.2%	10.3%	-2.1%
Manitoba	9.3%	9.5%	-0.2%	11.3%	-2.0%
Ontario	10.2%	10.1%	0.1%	11.7%	-1.5%
Québec	9.1%	9.9%	-0.8%	12.9%	-3.8%
New Brunswick	15.6%	12.9%	2.7%	n/a	n/a
Nova Scotia	14.1%	15.3%	-1.2%	11.6%	2.5%
Prince Edward Island	19.2%	n/a	n/a	n/a	n/a
Nfld. Lab.	11.7%	10.8%	0.9%	14.0%	-2.3%
Canada	9.7%	9.9%	-0.2%	11.1%	-1.4%

"n/a" is reported in instances of insufficient response.

Aboriginal People Off-Reserve Unemployment Rate, Canada and Provinces



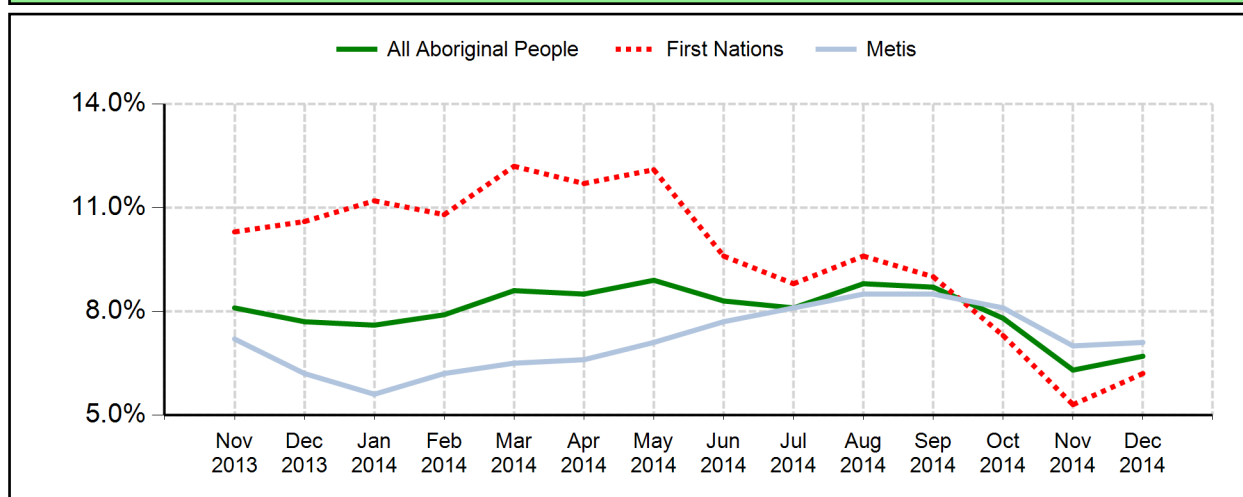
Alberta Aboriginal People Off-Reserve Labour Force Statistics Unadjusted, 3-Month Moving Average

All Aboriginal People	December 2014	November 2014	Monthly Change	December 2013	Yearly Change
Working Age Population (000s)	148.0	147.5	+0.5	142.5	+5.5
Labour Force (000s)	103.3	104.3	-1.0	101.2	+2.1
Employed (000s)	96.4	97.7	-1.3	93.4	+3.0
Unemployed (000s)	6.9	6.6	+0.3	7.8	-0.9
Participation Rate (%)	69.8%	70.7%	-0.9	71.1%	-1.3
Employment Rate (%)	65.1%	66.2%	-1.1	65.6%	-0.5
Unemployment Rate (%)	6.7%	6.3%	+0.4	7.7%	-1.0

First Nations	December 2014	November 2014	Monthly Change	December 2013	Yearly Change
Working Age Population (000s)	56.9	56.7	+0.2	54.9	+2.0
Labour Force (000s)	39.8	39.5	+0.3	35.9	+3.9
Employed (000s)	37.4	37.4	0.0	32.1	+5.3
Unemployed (000s)	2.5	2.1	+0.4	3.8	-1.3
Participation Rate (%)	70.0%	69.6%	+0.4	65.4%	+4.6
Employment Rate (%)	65.6%	65.9%	-0.3	58.5%	+7.1
Unemployment Rate (%)	6.2%	5.3%	+0.9	10.6%	-4.4

Métis	December 2014	November 2014	Monthly Change	December 2013	Yearly Change
Working Age Population (000s)	88.9	88.7	+0.2	85.6	+3.3
Labour Force (000s)	62.2	63.6	-1.4	63.8	-1.6
Employed (000s)	57.8	59.1	-1.3	59.9	-2.1
Unemployed (000s)	4.4	4.5	-0.1	4.0	+0.4
Participation Rate (%)	69.9%	71.7%	-1.8	74.5%	-4.6
Employment Rate (%)	65.0%	66.7%	-1.7	69.9%	-4.9
Unemployment Rate (%)	7.1%	7.0%	+0.1	6.2%	+0.9

Unemployment Rate by Population Group Unadjusted, 3-Month Moving Average



Data Source: Statistics Canada, Labour Force Survey

Caution on sample size.

Alberta Aboriginal People Off-Reserve Employment Characteristics
Unadjusted (000s), 3-Month Moving Average

All Aboriginal People	December 2014	November 2014	Monthly Change	December 2013	Yearly Change
Employed	96.4	97.7	-1.3	93.4	+3.0
Full-Time Employment	78.4	80.7	-2.3	76.7	+1.7
Part-Time Employment	18.0	17.0	+1.0	16.8	+1.2
Unemployed	6.9	6.6	+0.3	7.8	-0.9
Employees	85.5	85.9	-0.4	83.6	+1.9
Private Sector Employees	73.0	73.4	-0.4	69.3	+3.7
Public Sector Employees	12.5	12.5	0.0	14.3	-1.8
Self-Employed	10.9	11.8	-0.9	9.8	+1.1

First Nations	December 2014	November 2014	Monthly Change	December 2013	Yearly Change
Employed	37.4	37.4	0.0	32.1	+5.3
Full-Time Employment	29.6	28.4	+1.2	25.9	+3.7
Part-Time Employment	7.8	9.0	-1.2	6.2	+1.6
Unemployed	2.5	2.1	+0.4	3.8	-1.3
Employees	32.2	32.0	+0.2	29.3	+2.9
Private Sector Employees	28.1	27.5	+0.6	23.3	+4.8
Public Sector Employees	4.1	4.4	-0.3	6.0	-1.9
Self-Employed	5.2	5.4	-0.2	2.7	+2.5

Métis	December 2014	November 2014	Monthly Change	December 2013	Yearly Change
Employed	57.8	59.1	-1.3	59.9	-2.1
Full-Time Employment	47.6	51.1	-3.5	49.3	-1.7
Part-Time Employment	10.1	8.1	+2.0	10.5	-0.4
Unemployed	4.4	4.5	-0.1	4.0	+0.4
Employees	52.1	52.9	-0.8	52.7	-0.6
Private Sector Employees	43.8	45.0	-1.2	44.7	-0.9
Public Sector Employees	8.3	7.9	+0.4	8.1	+0.2
Self-Employed	5.6	6.2	-0.6	7.1	-1.5

Data Source: Statistics Canada, Labour Force Survey

Caution on sample size.

**Alberta Aboriginal People Off-Reserve Unemployment Rates by Age and Gender
Unadjusted, 3-Month Moving Average**

	All (Ages 15+)				
	December 2014	November 2014	Monthly Change	December 2013	Yearly Change
All Aboriginal People	6.7%	6.3%	+0.4	7.7%	-1.0
Men	6.2%	6.4%	-0.2	9.8%	-3.6
Women	7.2%	6.2%	+1.0	5.3%	+1.9
First Nations	6.2%	5.3%	+0.9	10.6%	-4.4
Men	6.0%	4.9%	+1.1	14.8%	+1.1
Women	6.3%	5.8%	+0.5	6.0%	+0.3
Métis	7.1%	7.0%	+0.1	6.2%	+0.9
Men	6.4%	7.6%	-1.2	7.3%	-0.9
Women	7.8%	6.5%	+1.3	5.0%	+2.8

**Alberta Aboriginal People Off-Reserve Employment Rates by Age and Gender
Unadjusted, 3-Month Moving Average**

	Youth (Ages 15-24)				
	December 2014	November 2014	Monthly Change	December 2013	Yearly Change
All Aboriginal People	52.5%	52.9%	-0.4	48.5%	+4.0
Men	59.9%	56.7%	+3.2	51.3%	+8.6
Women	46.4%	49.9%	-3.5	46.0%	+0.4
First Nations	56.7%	58.6%	-1.9	48.3%	+8.4
Métis	50.9%	50.6%	+0.3	48.9%	+2.0

	Adults (Ages 25+)				
	December 2014	November 2014	Monthly Change	December 2013	Yearly Change
All Aboriginal People	68.9%	70.2%	-1.1	70.9%	-2.0
Men	71.2%	73.6%	-2.4	76.2%	-5.0
Women	66.7%	66.7%	0.0	65.9%	+0.8
First Nations	68.8%	68.5%	+0.3	62.3%	+6.5
Métis	68.5%	70.8%	-2.3	75.9%	-7.4

Data Source: Statistics Canada, Labour Force Survey

Caution on sample size.

**Alberta Aboriginal People Off-Reserve Working Age Population by Age and Gender
Unadjusted (000s), 3-Month Moving Average**

	All (Ages 15+)				
	December 2014	November 2014	Monthly Change	December 2013	Yearly Change
All Aboriginal People	148.0	147.5	+0.5	142.5	+5.5
Men	71.7	71.4	+0.3	69.0	+2.7
Women	76.3	76.1	+0.2	73.5	+2.8
First Nations	56.9	56.7	+0.2	54.9	+2.0
Men	26.5	26.4	+0.1	25.4	+1.1
Women	30.4	30.3	+0.1	29.4	+1.0
Métis	88.9	88.7	+0.2	85.6	+3.3
Men	43.8	43.7	+0.1	42.5	+1.3
Women	45.1	45.0	+0.1	43.1	+2.0

	Youth (Ages 15-24)				
	December 2014	November 2014	Monthly Change	December 2013	Yearly Change
All Aboriginal People	33.8	33.5	+0.3	34.1	-0.3
Men	15.2	14.6	+0.6	16.1	-0.9
Women	18.6	18.9	-0.3	18.1	+0.5
First Nations	15.0	14.5	+0.5	15.1	-0.1
Men	6.3	5.9	+0.4	7.1	-0.8
Women	8.7	8.6	+0.1	8.0	+0.7
Métis	17.9	18.1	-0.2	19.0	-1.1
Men	8.5	8.3	+0.2	9.0	-0.5
Women	9.5	9.8	-0.3	10.0	-0.5

	Adults (Ages 25+)				
	December 2014	November 2014	Monthly Change	December 2013	Yearly Change
All Aboriginal People	114.2	114.0	+0.2	108.3	+5.9
Men	56.5	56.8	-0.3	52.9	+3.6
Women	57.7	57.2	+0.5	55.5	+2.2
First Nations	42.0	42.2	-0.2	39.8	+2.2
Men	20.3	20.5	-0.2	18.4	+1.9
Women	21.7	21.7	0.0	21.4	+0.3
Métis	71.0	70.5	+0.5	66.7	+4.3
Men	35.3	35.4	-0.1	33.5	+1.8
Women	35.6	35.2	+0.4	33.2	+2.4

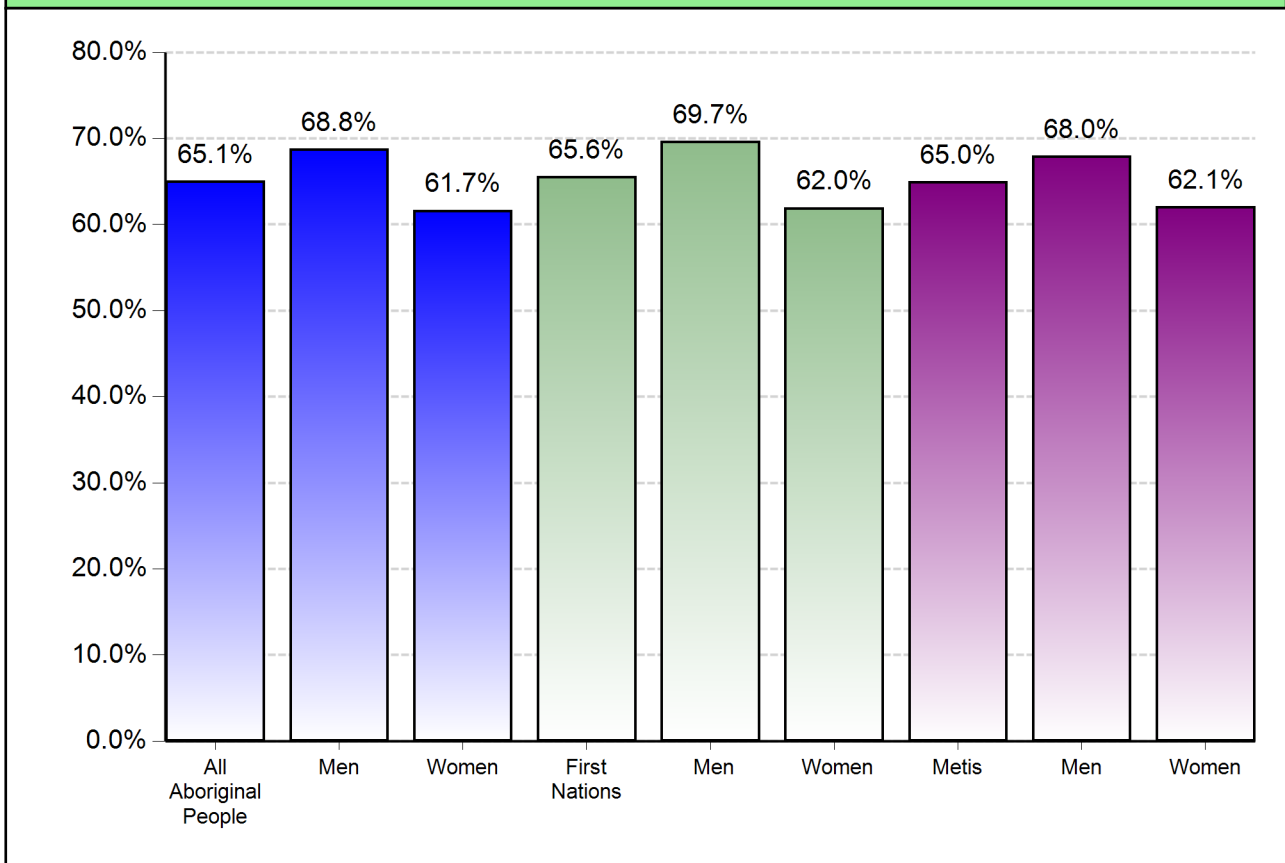
Data Source: Statistics Canada, Labour Force Survey

Caution on sample size.

**Alberta Aboriginal People Off-Reserve Employment Rates by Gender
Unadjusted, 3-Month Moving Average**

	December 2014	November 2014	Monthly Change	December 2013	Yearly Change
All Aboriginal People	65.1%	66.2%	-1.1	65.6%	-0.5
Men	68.8%	70.2%	-1.4	70.4%	-1.6
Women	61.7%	62.5%	-0.8	61.0%	+0.7
First Nations	65.6%	65.9%	-0.3	58.5%	+7.1
Men	69.7%	70.8%	-1.1	63.2%	+6.5
Women	62.0%	61.7%	+0.3	54.3%	+7.7
Métis	65.0%	66.7%	-1.7	69.9%	-4.9
Men	68.0%	69.8%	-1.8	74.1%	-6.1
Women	62.1%	63.6%	-1.5	65.7%	-3.6

**Alberta Aboriginal People Off-Reserve Employment Rates by Gender
December 2014, Unadjusted, 3-Month Moving Average**



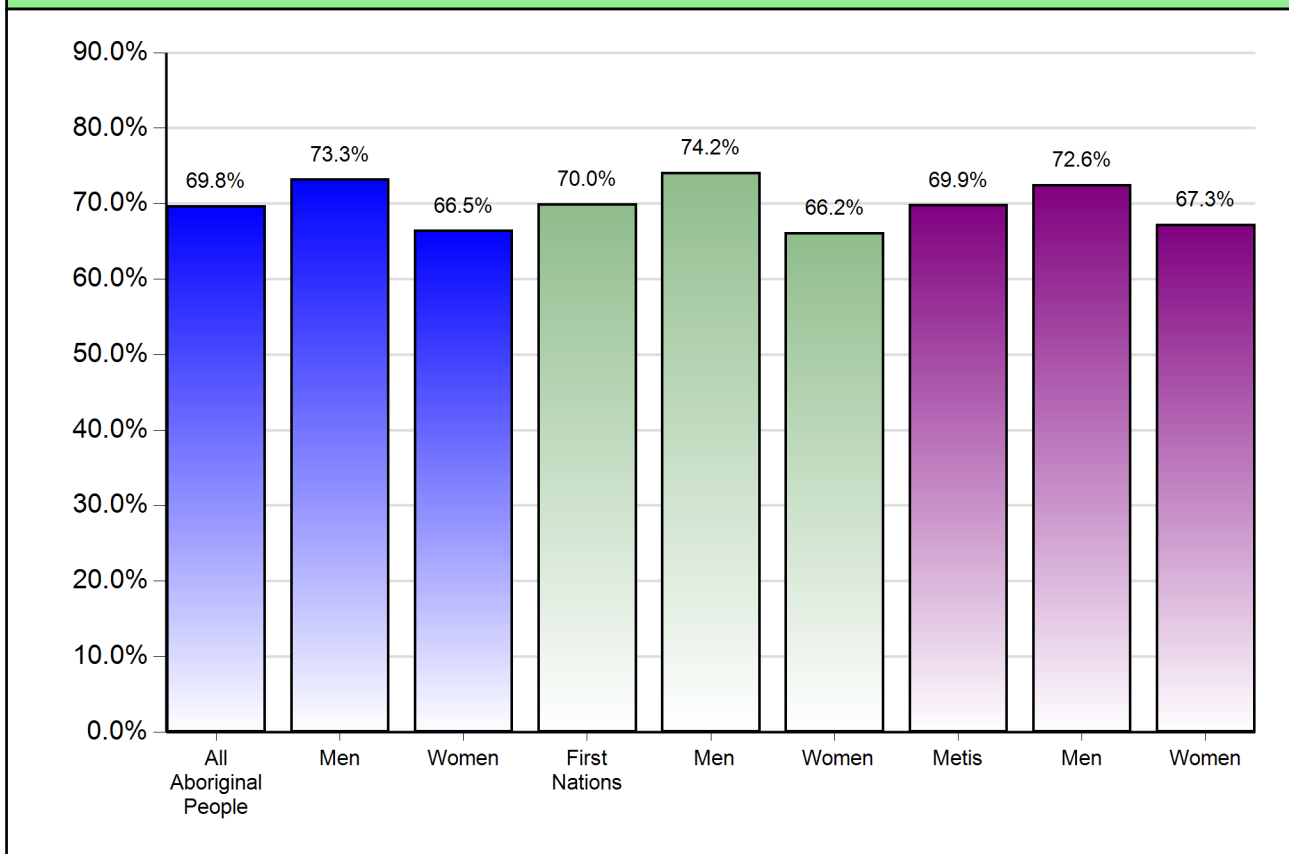
Data Source: Statistics Canada, Labour Force Survey

Caution on sample size.

Alberta Aboriginal People Off-Reserve Participation Rates by Gender
Unadjusted, 3-Month Moving Average

	December 2014	November 2014	Monthly Change	December 2013	Yearly Change
All Aboriginal People	69.8%	70.7%	-0.9	71.1%	-1.3
Men	73.3%	75.0%	-1.7	78.1%	-4.8
Women	66.5%	66.6%	-0.1	64.5%	+2.0
First Nations	70.0%	69.6%	+0.4	65.4%	+4.6
Men	74.2%	74.4%	-0.2	74.2%	0.0
Women	66.2%	65.5%	+0.7	57.8%	+8.4
Métis	69.9%	71.7%	-1.8	74.5%	-4.6
Men	72.6%	75.5%	-2.9	80.0%	-7.4
Women	67.3%	68.0%	-0.7	69.2%	-1.9

Alberta Aboriginal People Off-Reserve Participation Rates by Gender
December 2014, Unadjusted, 3-Month Moving Average



Data Source: Statistics Canada, Labour Force Survey

Caution on sample size.

Aboriginal People Off-Reserve Employment
Alberta Economic Regions
Unadjusted, 3-Month Moving Average

All Aboriginal People	Employment (000s)		
	Edmonton	Calgary	Rest Of Alberta
December 2014	37.6	24.3	34.5
November 2014	36.7	24.7	36.3
December 2013	30.3	25.6	37.5

First Nations	Employment (000s)		
	Edmonton	Calgary	Rest Of Alberta
December 2014	14.7	9.9	12.8
November 2014	14.5	9.3	13.7
December 2013	8.1	10.0	13.9

Métis	Employment (000s)		
	Edmonton	Calgary	Rest Of Alberta
December 2014	23.0	13.7	21.1
November 2014	22.2	14.7	22.3
December 2013	21.4	15.5	22.9



Aboriginal People Off-Reserve Unemployment Rates
Alberta Economic Regions
Unadjusted, 3-Month Moving Average

All Aboriginal People	Unemployment Rate		
	Edmonton	Calgary	Rest of Alberta
December 2014	5.5%	n/a	9.4%
November 2014	5.0%	n/a	9.3%
December 2013	9.1%	n/a	8.8%

Data Source: Statistics Canada, Labour Force Survey

Caution on sample size.

Alberta Aboriginal People Off-Reserve Employment by Industry
Unadjusted (000s), 3-Month Moving Average

	December 2014	November 2014	Monthly Change	December 2013	Yearly Change
All Industries	96.4	97.7	-1.3	93.4	+3.0
<i>Goods-Producing Sector</i>	26.8	26.7	+0.1	31.5	-4.7
Agriculture	n/a	n/a	0.0	n/a	0.0
Forestry, Fishing, Mining, Oil and Gas	7.3	8.4	-1.1	11.7	-4.4
Utilities	n/a	n/a	0.0	n/a	0.0
Construction	15.7	14.8	+0.9	13.9	+1.8
Manufacturing	3.6	3.1	+0.5	4.0	-0.4
<i>Services-Producing Sector</i>	69.6	71.0	-1.4	61.9	+7.7
Retail and Wholesale Trade	16.0	15.9	+0.1	12.4	+3.6
Transportation and Warehousing	4.9	5.3	-0.4	4.4	+0.5
Finance, Insurance, Real Estate and Leasing	4.8	5.1	-0.3	2.8	+2.0
Professional, Scientific and Technical Services	4.2	3.4	+0.8	4.6	-0.4
Management, Administrative and Other Support	4.8	5.2	-0.4	3.5	+1.3
Educational Services	4.0	3.8	+0.2	2.9	+1.1
Health Care and Social Assistance	10.1	10.3	-0.2	9.8	+0.3
Information, Culture and Recreation	3.1	3.9	-0.8	3.0	+0.1
Accommodation and Food Services	8.5	9.0	-0.5	7.2	+1.3
Other Services	5.9	5.4	+0.5	5.3	+0.6
Public Administration	3.3	3.7	-0.4	6.0	-2.7

Alberta Aboriginal People Off-Reserve Employment by Occupation
Unadjusted (000s), 3-Month Moving Average

	December 2014	November 2014	Monthly Change	December 2013	Yearly Change
All Occupations	96.4	97.7	-1.3	93.4	+3.0
Management Occupations	3.9	4.2	-0.3	4.6	-0.7
Business, Finance and Administrative Occupations	12.8	13.1	-0.3	14.8	-2.0
Natural and Applied Sciences and Related Occupations	3.3	2.7	+0.6	6.8	-3.5
Health Occupations	6.6	6.5	+0.1	2.1	+4.5
Social Science, Education, Government and Religion	6.1	6.5	-0.4	6.8	-0.7
Occupations in Art, Culture, Recreation and Sport	2.7	3.0	-0.3	n/a	+2.7
Sales and Service Occupations	25.6	26.2	-0.6	26.7	-1.1
Trades, Transportation, Operators and Related	28.9	28.7	+0.2	22.8	+6.1
Occupations Unique to Primary Industry	3.5	4.0	-0.5	5.3	-1.8
Unique to Processing, Manufacturing and Utilities	2.9	2.7	+0.2	2.6	+0.3

Data Source: Statistics Canada, Labour Force Survey

Caution on sample size.
 "n/a" is reported in instances of insufficient response

Alberta Aboriginal People Off-Reserve (ages 15-64)
Labour Force by Educational Attainment
Unadjusted (000s), 3-Month Moving Average

All Aboriginal People	December 2014	November 2014	Monthly Change	December 2013	Yearly Change
Some post-secondary education or less	38.6	38.9	-0.3	50.0	-11.4
Completed post-secondary education	55.0	55.7	-0.7	41.4	+13.6

First Nations	December 2014	November 2014	Monthly Change	December 2013	Yearly Change
Some post-secondary education or less	17.6	17.0	+0.6	17.7	-0.1
Completed post-secondary education	19.0	18.7	+0.3	14.8	+4.2

Métis	December 2014	November 2014	Monthly Change	December 2013	Yearly Change
Some post-secondary education or less	20.7	21.4	-0.7	32.0	-11.3
Completed post-secondary education	35.0	36.3	-1.3	25.4	+9.6

Alberta Aboriginal People Off-Reserve (ages 15-64)
Employment Rates by Educational Attainment
Unadjusted (000s), 3-Month Moving Average

All Aboriginal People	December 2014	November 2014	Monthly Change	December 2013	Yearly Change
Some post-secondary education or less	65.6%	66.1%	-0.5	68.8%	-3.2
Completed post-secondary education	83.0%	84.3%	-1.3	79.3%	+3.7

First Nations	December 2014	November 2014	Monthly Change	December 2013	Yearly Change
Some post-secondary education or less	69.5%	67.2%	+2.3	56.9%	+12.6
Completed post-secondary education	78.8%	81.0%	-2.2	80.1%	-1.3

Métis	December 2014	November 2014	Monthly Change	December 2013	Yearly Change
Some post-secondary education or less	62.1%	64.8%	-2.7	76.8%	-14.7
Completed post-secondary education	85.1%	85.9%	-0.8	78.6%	+6.5

Caution on sample size.
 Data in these tables are for people ages 15-64 who are no longer in school (non-students).