

# Porcupine Hills Public Land Use Zone Motorized Hunting and Game Retrieval Access Pilot

Effective September 1 2023 - February 28 2024

## Map Legend

### Designated Trails and Roads

Vehicle Description	Trail Sign	Map Symbol	Explanation	What Type of Motorized Vehicle Am I Driving?			
				4 x 4 98"	Side by Side 70"	Quad / Snowmobile 70"	Motorcycle 36"
Motorized vehicles with an overall width up to and including 2.4m (98") in width.			Open Sept 1 - April 30	✓	✓	✓	✓
Motorized vehicles with an overall width up to and including 1.8m (70") in width.			Open Sept 1 - April 30	x	✓	✓	✓
			Open Sept 1 - Feb 28	x	✓	✓	✓
			Open Sept 1 - Feb 28	x	✓	✓	✓
			Open Sept 1 - Feb 28	x	✓	✓	✓
Motorized vehicles insured and registered as on-highway vehicles only are permitted on these roads.	N/A	 	Public Highways, Departmental Licence of Occupation and Licence of Occupation Roads	<b>Only on-highway registered vehicles permitted.</b> <b>Off-highway vehicles are not permitted on these roads</b>			

**Note 1:** Trail access may be amended, modified or closed by an officer in response to fire, fire hazard, flooding, wildlife or other environmental and safety concerns. Please ensure you have the current information on the area to which you are travelling and obey all posted signs and notices.

**Note 2:** Motorized vehicles over 70" / 1.8m in width are not permitted on trails

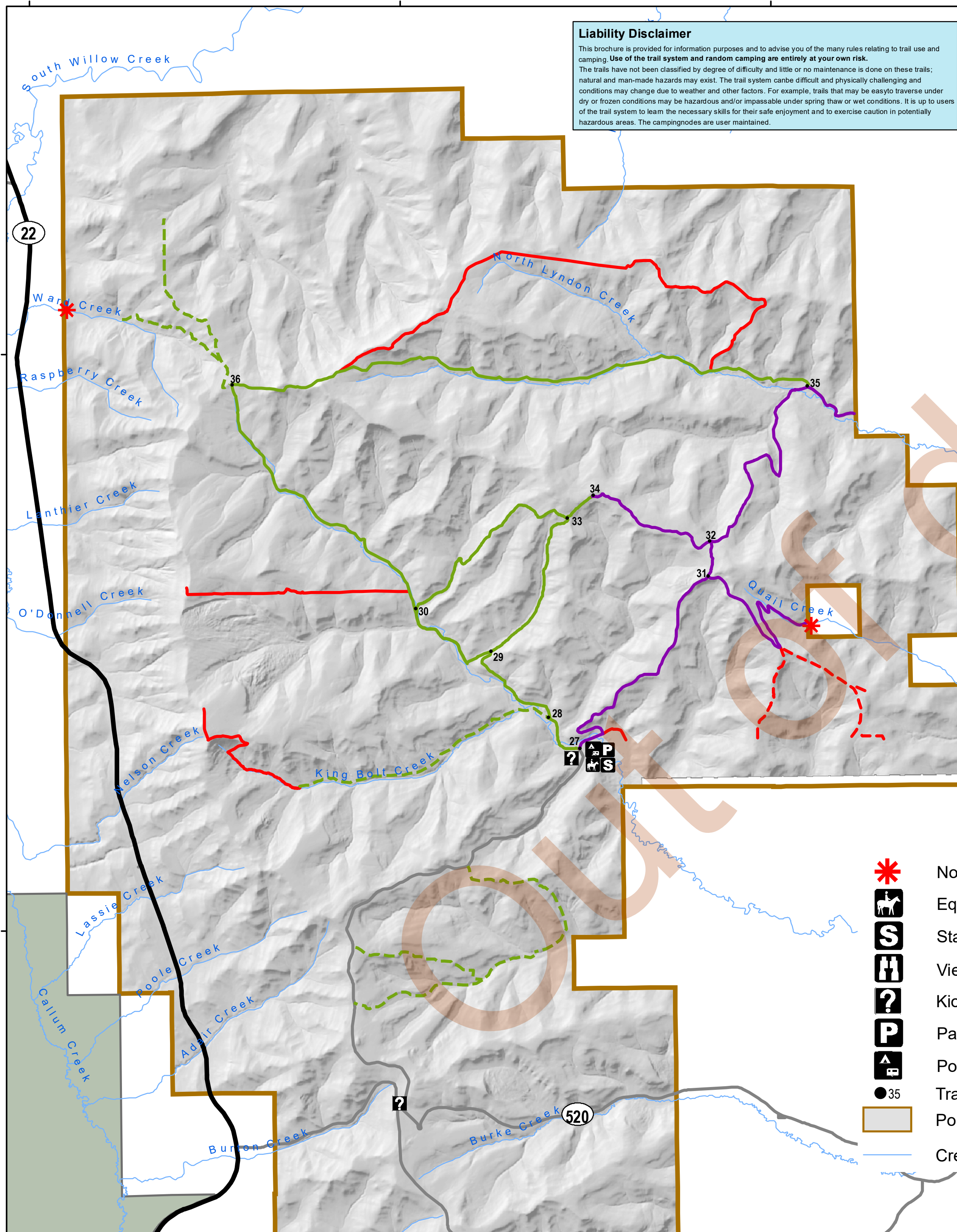
These motorized hunting and big game retrieval access trails are a pilot project (2021 -2024) in collaboration with Alberta Fish and Game Association, Alberta Off-Highway Vehicle Association, and Alberta Environment and Parks, to enable appropriate opportunities for hunting in this area.

**Hunting Trail**  
To be on this trail with a motorized vehicle, you must have on person proof of this Porcupine Hills Public Land Use Zone Motorized Hunting and Game Retrieval Access Pilot map and a valid hunting license

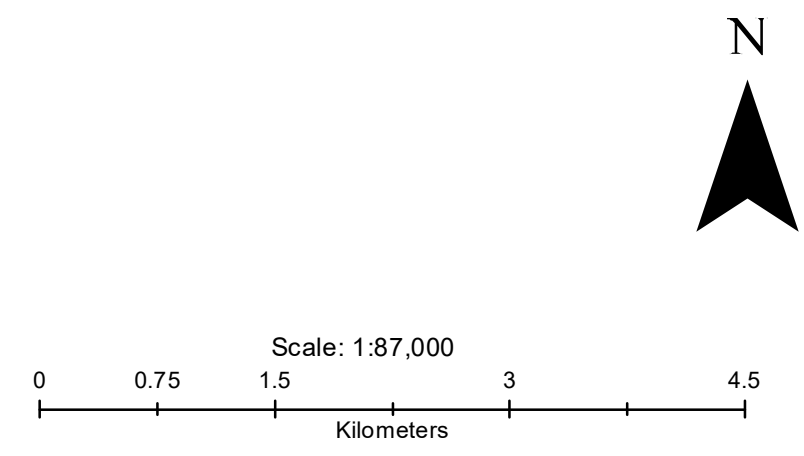
**Game Retrieval Trail**  
To be on this trail with a motorized vehicle, you must have on person this Porcupine Hills Public Land Use Zone Motorized Hunting and Game Retrieval Access Pilot map and are retrieving your harvested, legally tagged big game animal.

### Liability Disclaimer

This brochure is provided for information purposes and to advise you of the many rules relating to trail use and camping. **Use of the trail system and random camping are entirely at your own risk.** The trails have not been classified by degree of difficulty and little or no maintenance is done on these trails; natural and man-made hazards may exist. The trail system can be difficult and physically challenging and conditions may change due to weather and other factors. For example, trails that may be easy to traverse under dry or frozen conditions may be hazardous and/or impassable under spring thaw or wet conditions. It is up to users of the trail system to learn the necessary skills for their safe enjoyment and to exercise caution in potentially hazardous areas. The camping nodes are user maintained.



- No Public Motorized Access Beyond This Point
- Equestrian
- Staging Area
- Viewpoint
- Kiosk
- Parking
- Popular Random Camping Areas
- Trail Intersection Marker
- Porcupine Hills Public Land Use Zone
- Creeks / Rivers



© 2023 Government of Alberta  
Coordinate System: NAD83 10TM AEP Forest  
Forestry and Parks  
Where applicable:  
Base data provided by the Government of Alberta under the Alberta Open Data License (2023).  
The Minister and the Crown provides this information without warranty or representation as to any matter including but not limited to whether the data/information is correct, accurate, or free from error, defect, danger, or hazard and whether it is otherwise useful or suitable for any use the user may make of it.