

Disclaimer

This Report, including the data and information contained in this Report, is provided to you on an “as is” and “as available” basis at the sole discretion of the Government of Alberta and subject to the terms and conditions of use below (the “Terms and Conditions”). The Government of Alberta has not verified this Report for accuracy and does not warrant the accuracy of, or make any other warranties or representations regarding, this Report. Furthermore, updates to this Report may not be made available. Your use of any of this Report is at your sole and absolute risk.

This Report is provided to the Government of Alberta, and the Government of Alberta has obtained a license or other authorization for use of the Reports, from:

Shell Canada Energy, Chevron Canada Limited. and Marathon Oil Canada Corporation, for the Quest Project

(collectively the “Project”)

Each member of the Project expressly disclaims any representation or warranty, express or implied, as to the accuracy or completeness of the material and information contained herein, and none of them shall have any liability, regardless of any negligence or fault, for any statements contained in, or for any omissions from, this Report. Under no circumstances shall the Government of Alberta or the Project be liable for any damages, claims, causes of action, losses, legal fees or expenses, or any other cost whatsoever arising out of the use of this Report or any part thereof or the use of any other data or information on this website.

Terms and Conditions of Use

Except as indicated in these Terms and Conditions, this Report and any part thereof shall not be copied, reproduced, distributed, republished, downloaded, displayed, posted or transmitted in any form or by any means, without the prior written consent of the Government of Alberta and the Project.

The Government of Alberta’s intent in posting this Report is to make them available to the public for personal and non-commercial (educational) use. You may not use this Report for any other purpose. You may reproduce data and information in this Report subject to the following conditions:

- any disclaimers that appear in this Report shall be retained in their original form and applied to the data and information reproduced from this Report
- the data and information shall not be modified from its original form
- the Project shall be identified as the original source of the data and information, while this website shall be identified as the reference source, and
- the reproduction shall not be represented as an official version of the materials reproduced, nor as having been made in affiliation with or with the endorsement of the Government of Alberta or the Project

By accessing and using this Report, you agree to indemnify and hold the Government of Alberta and the Project, and their respective employees and agents, harmless from and against any and all claims, demands, actions and costs (including legal costs on a solicitor-client basis) arising out of any breach by you of these Terms and Conditions or otherwise arising out of your use or reproduction of the data and information in this Report.

Your access to and use of this Report is subject exclusively to these Terms and Conditions and any terms and conditions contained within the Report itself, all of which you shall comply with. You will not use this Report for any purpose that is unlawful or prohibited by these Terms and Conditions. You agree that any other use of this Report means you agree to be bound by these Terms and Conditions. These Terms and Conditions are subject to modification, and you agree to review them periodically for changes. If you do not accept these Terms and Conditions you agree to immediately stop accessing this Report and destroy all copies in your possession or control.

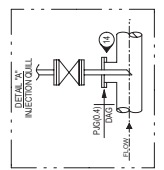
These Terms and Conditions may change at any time, and your continued use and reproduction of this Report following any changes shall be deemed to be your acceptance of such change.

If any of these Terms and Conditions should be determined to be invalid, illegal or unenforceable for any reason by any court of competent jurisdiction then the applicable provision shall be severed and the remaining provisions of these Terms and Conditions shall survive and remain in full force and effect and continue to be binding and enforceable.

These Terms and Conditions shall: (i) be governed by and construed in accordance with the laws of the province of Alberta and you hereby submit to the exclusive jurisdiction of the Alberta courts, and (ii) ensure to the benefit of, and be binding upon, the Government of Alberta and your respective successors and assigns.

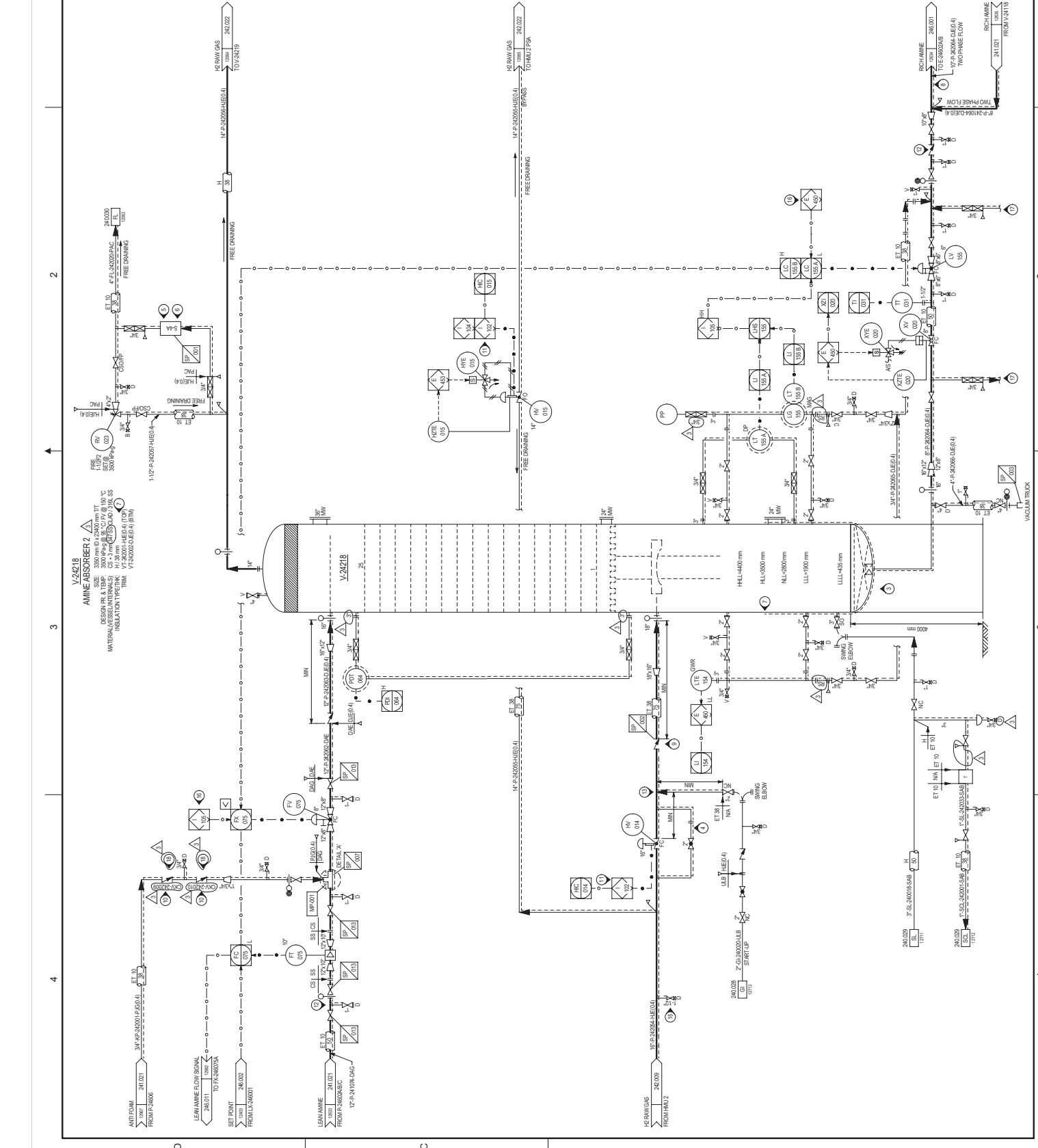
NO.	DATE	DESCRIPTION	BY	CHK	APP	REV.
1	2013.07.30	ISSUED FOR CONSTRUCTION
2	2013.07.30	ISSUED FOR CONSTRUCTION
3	2013.07.30	ISSUED FOR CONSTRUCTION
4	2013.07.30	ISSUED FOR CONSTRUCTION
5	2013.07.30	ISSUED FOR CONSTRUCTION
6	2013.07.30	ISSUED FOR CONSTRUCTION
7	2013.07.30	ISSUED FOR CONSTRUCTION
8	2013.07.30	ISSUED FOR CONSTRUCTION
9	2013.07.30	ISSUED FOR CONSTRUCTION
10	2013.07.30	ISSUED FOR CONSTRUCTION
11	2013.07.30	ISSUED FOR CONSTRUCTION
12	2013.07.30	ISSUED FOR CONSTRUCTION
13	2013.07.30	ISSUED FOR CONSTRUCTION
14	2013.07.30	ISSUED FOR CONSTRUCTION
15	2013.07.30	ISSUED FOR CONSTRUCTION
16	2013.07.30	ISSUED FOR CONSTRUCTION
17	2013.07.30	ISSUED FOR CONSTRUCTION
18	2013.07.30	ISSUED FOR CONSTRUCTION

FLUOR
 IFC - Issued for Construction
 Jul 30, 2013



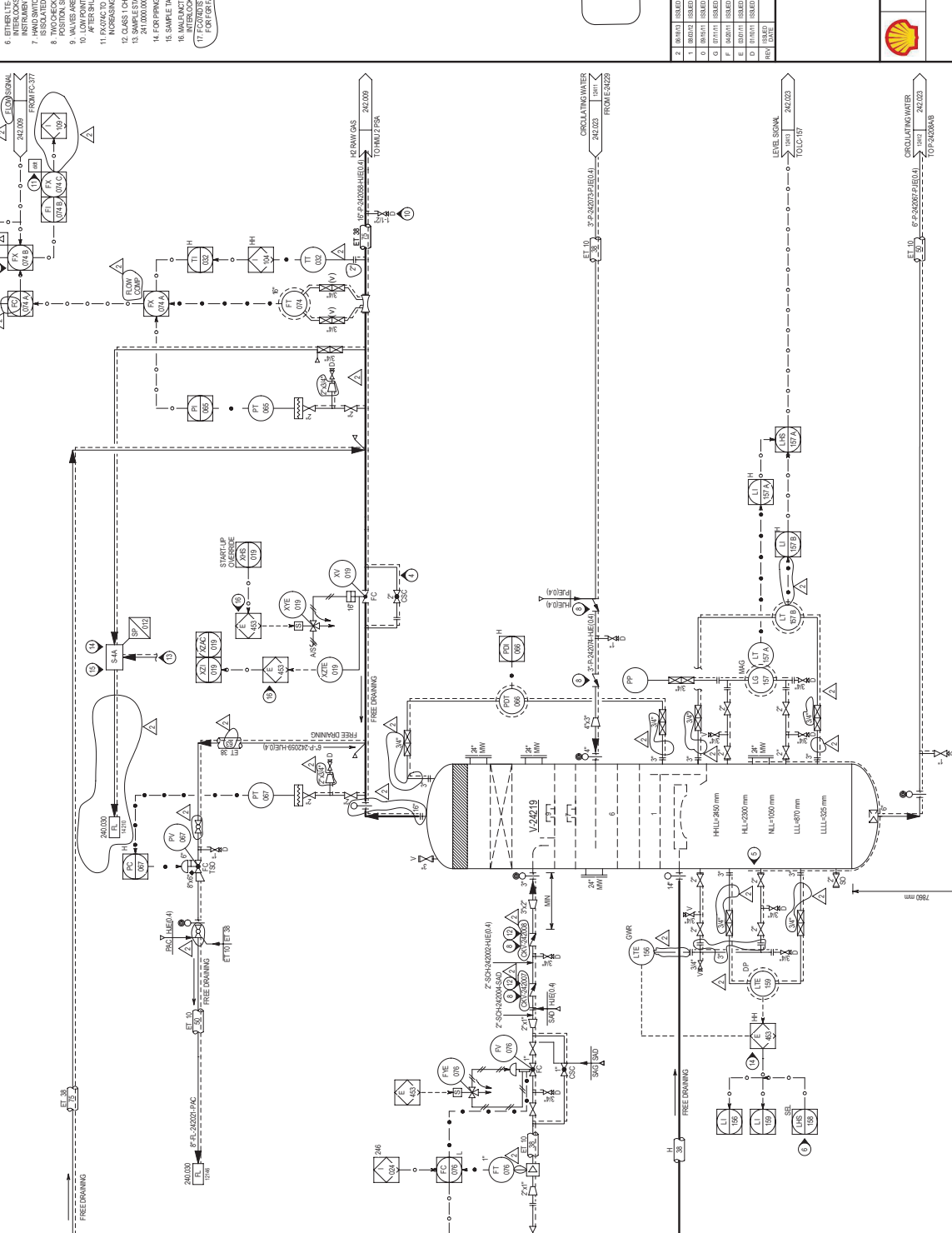
1. SEE DRAWINGS 200.000.000.041.001 THROUGH 041.005 FOR SYMBOL IDENTIFICATION GENERAL NOTES AND CONNECTION DETAILS.
2. ALL INSTRUMENT TAG NUMBERS ARE PREFIXED BY '242' UNLESS OTHERWISE SPECIFIED.
3. BOTTOM OF COLUMN IS PACKED WITH 600 mm OF #2 RACHG RIMS.
4. H2 RAW GAS BYPASS REQUIRED FOR SYSTEM WAKE AND PRESSURIZATION AT STARTUP.
5. DELETED.
6. DELETED.
7. ELECTRIC TRACE WITH 90 mm INSULATION THICKNESS TO HLL.
8. CHECK FOR INSULATION GAPS AND WELD REPAIRS AT ALL WELDS, TEES, AND CONNECTIONS.
9. 3/8 SS HANGERS TO BE USED FOR ALL WELDS AND CONNECTIONS.
10. TWO CHECK VALVES IN SERIES, ONE IN THE HORIZONTAL AND ONE IN THE VERTICAL POSITION, SHALL BE INSTALLED AT EACH 180° TURN.
11. ALL INSTRUMENTS SHALL BE INSTALLED AT THE TOP OF THE COLUMN AND PRESENTED BY INTERLOCK 140.
12. VALVES ARE FOR BATTERY LIMIT ISOLATION OF UNIT.
13. TOP CONNECTION, INJECTION NOZZLE, OUTLET OF INJECTION COLUMN TO BE CENTERED IN PROCESS LINE.
14. LOW POINT DRAIN TO BE ACCESSIBLE AND DRAINED PRIOR TO START-UP AND AFTER SHUT-DOWN TO WASH AND DRY OUT TO 250% VOLUME OF H2O.
15. SHARED STATION COMMON TO ALL LANS (M&I 2 SAME STATION AND CONTINUED FROM LANS 18 AND 242.000.000.041.001).
16. CONTINUED FROM LANS 18 AND 242.000.000.041.001.
17. CONTINUED FROM LANS 18 AND 242.000.000.041.001.
18. CHECK VALVE CHECK VALVES STANDARD PIPING ITEM 09R550.

V-24218
 AMINE ABSORBER 2
 SIZE: 3500 mm ID x 24000 mm HT
 DESIGN PR & SIZE: CS-3 (TYPE) CLASS 316 SS
 MATERIAL (VESSEL INTERNALS): CS-3 (TYPE) CLASS 316 SS
 INSULATION TYPE: PAK-1 (100 mm)
 TAG: V-24218-HEB-A (18 TM)
 V-24218-HEB-A (18 TM)



V-24219
ABSORBER 2 WASH WATER VESSEL

SIZE: 1800 mm ID x 10000 mm TT
 MATERIAL: CS-3 mm SA
 INSULATION: 100 mm PIR
 TRAIL: 10000 mm



- NOTES:**
1. SEE DRAWINGS 200.0000.000.04.010 THROUGH 016 FOR SYMBOL IDENTIFICATION GENERAL NOTES & CONNECTION DETAILS.
 2. ALL INSTRUMENT TAG NUMBERS ARE PREFIXED BY "242" UNLESS OTHERWISE SPECIFIED.
 3. CALCULATE AMOUNT OF CO2 REMOVED FROM RAW FC GAS.
 4. HP RAW GAS BYPASS REQUIRED FOR SYSTEM PURGE AND PRESSURIZATION AT STARTUP.
 5. ELECTRIC TRUCK (ET) WITH 150 mm INSULATION THICKNESS TO TAIL.
 6. EITHER 12.5°C OR 15.0°C SHALL BE SELECTABLE AS THE INPUT TO SAFETY INTERLOCKS E-452 AND E-453. A DEVIATION ALARM TO MONITOR THE TWO INTERLOCKS SHALL BE PROVIDED.
 7. HAND SWITCH TO SEND LOW LEVEL POINT FROM FC-377 TO PSA WHEN GUEST IS ISOLATED.
 8. TWO CHECK VALVES IN SERIES, ONE IN THE HORIZONTAL AND ONE IN THE VERTICAL, ARE REQUIRED TO BE ACCESSIBLE AND DRAINED PRIOR TO START-UP AND SHUT-DOWN.
 9. VALVES ARE FOR BATTERY LIMIT ISOLATION OF UNIT.
 10. LOW POINT DRAIN TO BE ACCESSIBLE AND DRAINED PRIOR TO START-UP AND SHUT-DOWN.
 11. CHECK VALVE (CHECK VALVES) IS/ARE TO BE PROVIDED.
 12. CLASS 1 CHECK VALVE (CHECK VALVES) IS/ARE TO BE PROVIDED.
 13. SAMPLE POINT COMMON TO HAU 1 AND HAU 2. DRAWING 200.0000.000.04.012.
 14. EXISTING DETAIL LOS SAMPLE STATION. SEE DRAWING 200.0000.000.04.012.
 15. SAMPLE TAKE-OFF POINTS TO BE ACCESSIBLE.
 16. MAINTENANCE POINT FOR V-242018 TO BE ACCESSIBLE.
 17. MAINTENANCE POINT FOR V-242018 TO BE ACCESSIBLE.
 18. MAINTENANCE POINT FOR V-242018 TO BE ACCESSIBLE.
 19. MAINTENANCE POINT FOR V-242018 TO BE ACCESSIBLE.
 20. MAINTENANCE POINT FOR V-242018 TO BE ACCESSIBLE.
 21. MAINTENANCE POINT FOR V-242018 TO BE ACCESSIBLE.
 22. MAINTENANCE POINT FOR V-242018 TO BE ACCESSIBLE.
 23. MAINTENANCE POINT FOR V-242018 TO BE ACCESSIBLE.
 24. MAINTENANCE POINT FOR V-242018 TO BE ACCESSIBLE.
 25. MAINTENANCE POINT FOR V-242018 TO BE ACCESSIBLE.
 26. MAINTENANCE POINT FOR V-242018 TO BE ACCESSIBLE.
 27. MAINTENANCE POINT FOR V-242018 TO BE ACCESSIBLE.
 28. MAINTENANCE POINT FOR V-242018 TO BE ACCESSIBLE.
 29. MAINTENANCE POINT FOR V-242018 TO BE ACCESSIBLE.
 30. MAINTENANCE POINT FOR V-242018 TO BE ACCESSIBLE.
 31. MAINTENANCE POINT FOR V-242018 TO BE ACCESSIBLE.
 32. MAINTENANCE POINT FOR V-242018 TO BE ACCESSIBLE.
 33. MAINTENANCE POINT FOR V-242018 TO BE ACCESSIBLE.
 34. MAINTENANCE POINT FOR V-242018 TO BE ACCESSIBLE.
 35. MAINTENANCE POINT FOR V-242018 TO BE ACCESSIBLE.
 36. MAINTENANCE POINT FOR V-242018 TO BE ACCESSIBLE.
 37. MAINTENANCE POINT FOR V-242018 TO BE ACCESSIBLE.
 38. MAINTENANCE POINT FOR V-242018 TO BE ACCESSIBLE.
 39. MAINTENANCE POINT FOR V-242018 TO BE ACCESSIBLE.
 40. MAINTENANCE POINT FOR V-242018 TO BE ACCESSIBLE.
 41. MAINTENANCE POINT FOR V-242018 TO BE ACCESSIBLE.
 42. MAINTENANCE POINT FOR V-242018 TO BE ACCESSIBLE.
 43. MAINTENANCE POINT FOR V-242018 TO BE ACCESSIBLE.
 44. MAINTENANCE POINT FOR V-242018 TO BE ACCESSIBLE.
 45. MAINTENANCE POINT FOR V-242018 TO BE ACCESSIBLE.
 46. MAINTENANCE POINT FOR V-242018 TO BE ACCESSIBLE.
 47. MAINTENANCE POINT FOR V-242018 TO BE ACCESSIBLE.
 48. MAINTENANCE POINT FOR V-242018 TO BE ACCESSIBLE.
 49. MAINTENANCE POINT FOR V-242018 TO BE ACCESSIBLE.
 50. MAINTENANCE POINT FOR V-242018 TO BE ACCESSIBLE.
 51. MAINTENANCE POINT FOR V-242018 TO BE ACCESSIBLE.
 52. MAINTENANCE POINT FOR V-242018 TO BE ACCESSIBLE.
 53. MAINTENANCE POINT FOR V-242018 TO BE ACCESSIBLE.
 54. MAINTENANCE POINT FOR V-242018 TO BE ACCESSIBLE.
 55. MAINTENANCE POINT FOR V-242018 TO BE ACCESSIBLE.
 56. MAINTENANCE POINT FOR V-242018 TO BE ACCESSIBLE.
 57. MAINTENANCE POINT FOR V-242018 TO BE ACCESSIBLE.
 58. MAINTENANCE POINT FOR V-242018 TO BE ACCESSIBLE.
 59. MAINTENANCE POINT FOR V-242018 TO BE ACCESSIBLE.
 60. MAINTENANCE POINT FOR V-242018 TO BE ACCESSIBLE.
 61. MAINTENANCE POINT FOR V-242018 TO BE ACCESSIBLE.
 62. MAINTENANCE POINT FOR V-242018 TO BE ACCESSIBLE.
 63. MAINTENANCE POINT FOR V-242018 TO BE ACCESSIBLE.
 64. MAINTENANCE POINT FOR V-242018 TO BE ACCESSIBLE.
 65. MAINTENANCE POINT FOR V-242018 TO BE ACCESSIBLE.
 66. MAINTENANCE POINT FOR V-242018 TO BE ACCESSIBLE.
 67. MAINTENANCE POINT FOR V-242018 TO BE ACCESSIBLE.
 68. MAINTENANCE POINT FOR V-242018 TO BE ACCESSIBLE.
 69. MAINTENANCE POINT FOR V-242018 TO BE ACCESSIBLE.
 70. MAINTENANCE POINT FOR V-242018 TO BE ACCESSIBLE.
 71. MAINTENANCE POINT FOR V-242018 TO BE ACCESSIBLE.
 72. MAINTENANCE POINT FOR V-242018 TO BE ACCESSIBLE.
 73. MAINTENANCE POINT FOR V-242018 TO BE ACCESSIBLE.
 74. MAINTENANCE POINT FOR V-242018 TO BE ACCESSIBLE.
 75. MAINTENANCE POINT FOR V-242018 TO BE ACCESSIBLE.
 76. MAINTENANCE POINT FOR V-242018 TO BE ACCESSIBLE.
 77. MAINTENANCE POINT FOR V-242018 TO BE ACCESSIBLE.
 78. MAINTENANCE POINT FOR V-242018 TO BE ACCESSIBLE.
 79. MAINTENANCE POINT FOR V-242018 TO BE ACCESSIBLE.
 80. MAINTENANCE POINT FOR V-242018 TO BE ACCESSIBLE.
 81. MAINTENANCE POINT FOR V-242018 TO BE ACCESSIBLE.
 82. MAINTENANCE POINT FOR V-242018 TO BE ACCESSIBLE.
 83. MAINTENANCE POINT FOR V-242018 TO BE ACCESSIBLE.
 84. MAINTENANCE POINT FOR V-242018 TO BE ACCESSIBLE.
 85. MAINTENANCE POINT FOR V-242018 TO BE ACCESSIBLE.
 86. MAINTENANCE POINT FOR V-242018 TO BE ACCESSIBLE.
 87. MAINTENANCE POINT FOR V-242018 TO BE ACCESSIBLE.
 88. MAINTENANCE POINT FOR V-242018 TO BE ACCESSIBLE.
 89. MAINTENANCE POINT FOR V-242018 TO BE ACCESSIBLE.
 90. MAINTENANCE POINT FOR V-242018 TO BE ACCESSIBLE.
 91. MAINTENANCE POINT FOR V-242018 TO BE ACCESSIBLE.
 92. MAINTENANCE POINT FOR V-242018 TO BE ACCESSIBLE.
 93. MAINTENANCE POINT FOR V-242018 TO BE ACCESSIBLE.
 94. MAINTENANCE POINT FOR V-242018 TO BE ACCESSIBLE.
 95. MAINTENANCE POINT FOR V-242018 TO BE ACCESSIBLE.
 96. MAINTENANCE POINT FOR V-242018 TO BE ACCESSIBLE.
 97. MAINTENANCE POINT FOR V-242018 TO BE ACCESSIBLE.
 98. MAINTENANCE POINT FOR V-242018 TO BE ACCESSIBLE.
 99. MAINTENANCE POINT FOR V-242018 TO BE ACCESSIBLE.
 100. MAINTENANCE POINT FOR V-242018 TO BE ACCESSIBLE.

FLUOR
IFC - Issued for Construction
Jul 30, 2013

NO.	ISSUED FOR CONSTRUCTION	BY	DATE	REVISION	DESCRIPTION
1	ISSUED FOR CONSTRUCTION	BY	DATE	REVISION	DESCRIPTION
2	ISSUED FOR CONSTRUCTION	BY	DATE	REVISION	DESCRIPTION
3	ISSUED FOR CONSTRUCTION	BY	DATE	REVISION	DESCRIPTION
4	ISSUED FOR CONSTRUCTION	BY	DATE	REVISION	DESCRIPTION
5	ISSUED FOR CONSTRUCTION	BY	DATE	REVISION	DESCRIPTION
6	ISSUED FOR CONSTRUCTION	BY	DATE	REVISION	DESCRIPTION
7	ISSUED FOR CONSTRUCTION	BY	DATE	REVISION	DESCRIPTION
8	ISSUED FOR CONSTRUCTION	BY	DATE	REVISION	DESCRIPTION
9	ISSUED FOR CONSTRUCTION	BY	DATE	REVISION	DESCRIPTION
10	ISSUED FOR CONSTRUCTION	BY	DATE	REVISION	DESCRIPTION
11	ISSUED FOR CONSTRUCTION	BY	DATE	REVISION	DESCRIPTION
12	ISSUED FOR CONSTRUCTION	BY	DATE	REVISION	DESCRIPTION
13	ISSUED FOR CONSTRUCTION	BY	DATE	REVISION	DESCRIPTION
14	ISSUED FOR CONSTRUCTION	BY	DATE	REVISION	DESCRIPTION
15	ISSUED FOR CONSTRUCTION	BY	DATE	REVISION	DESCRIPTION
16	ISSUED FOR CONSTRUCTION	BY	DATE	REVISION	DESCRIPTION
17	ISSUED FOR CONSTRUCTION	BY	DATE	REVISION	DESCRIPTION
18	ISSUED FOR CONSTRUCTION	BY	DATE	REVISION	DESCRIPTION
19	ISSUED FOR CONSTRUCTION	BY	DATE	REVISION	DESCRIPTION
20	ISSUED FOR CONSTRUCTION	BY	DATE	REVISION	DESCRIPTION
21	ISSUED FOR CONSTRUCTION	BY	DATE	REVISION	DESCRIPTION
22	ISSUED FOR CONSTRUCTION	BY	DATE	REVISION	DESCRIPTION
23	ISSUED FOR CONSTRUCTION	BY	DATE	REVISION	DESCRIPTION
24	ISSUED FOR CONSTRUCTION	BY	DATE	REVISION	DESCRIPTION
25	ISSUED FOR CONSTRUCTION	BY	DATE	REVISION	DESCRIPTION
26	ISSUED FOR CONSTRUCTION	BY	DATE	REVISION	DESCRIPTION
27	ISSUED FOR CONSTRUCTION	BY	DATE	REVISION	DESCRIPTION
28	ISSUED FOR CONSTRUCTION	BY	DATE	REVISION	DESCRIPTION
29	ISSUED FOR CONSTRUCTION	BY	DATE	REVISION	DESCRIPTION
30	ISSUED FOR CONSTRUCTION	BY	DATE	REVISION	DESCRIPTION
31	ISSUED FOR CONSTRUCTION	BY	DATE	REVISION	DESCRIPTION
32	ISSUED FOR CONSTRUCTION	BY	DATE	REVISION	DESCRIPTION
33	ISSUED FOR CONSTRUCTION	BY	DATE	REVISION	DESCRIPTION
34	ISSUED FOR CONSTRUCTION	BY	DATE	REVISION	DESCRIPTION
35	ISSUED FOR CONSTRUCTION	BY	DATE	REVISION	DESCRIPTION
36	ISSUED FOR CONSTRUCTION	BY	DATE	REVISION	DESCRIPTION
37	ISSUED FOR CONSTRUCTION	BY	DATE	REVISION	DESCRIPTION
38	ISSUED FOR CONSTRUCTION	BY	DATE	REVISION	DESCRIPTION
39	ISSUED FOR CONSTRUCTION	BY	DATE	REVISION	DESCRIPTION
40	ISSUED FOR CONSTRUCTION	BY	DATE	REVISION	DESCRIPTION
41	ISSUED FOR CONSTRUCTION	BY	DATE	REVISION	DESCRIPTION
42	ISSUED FOR CONSTRUCTION	BY	DATE	REVISION	DESCRIPTION
43	ISSUED FOR CONSTRUCTION	BY	DATE	REVISION	DESCRIPTION
44	ISSUED FOR CONSTRUCTION	BY	DATE	REVISION	DESCRIPTION
45	ISSUED FOR CONSTRUCTION	BY	DATE	REVISION	DESCRIPTION
46	ISSUED FOR CONSTRUCTION	BY	DATE	REVISION	DESCRIPTION
47	ISSUED FOR CONSTRUCTION	BY	DATE	REVISION	DESCRIPTION
48	ISSUED FOR CONSTRUCTION	BY	DATE	REVISION	DESCRIPTION
49	ISSUED FOR CONSTRUCTION	BY	DATE	REVISION	DESCRIPTION
50	ISSUED FOR CONSTRUCTION	BY	DATE	REVISION	DESCRIPTION
51	ISSUED FOR CONSTRUCTION	BY	DATE	REVISION	DESCRIPTION
52	ISSUED FOR CONSTRUCTION	BY	DATE	REVISION	DESCRIPTION
53	ISSUED FOR CONSTRUCTION	BY	DATE	REVISION	DESCRIPTION
54	ISSUED FOR CONSTRUCTION	BY	DATE	REVISION	DESCRIPTION
55	ISSUED FOR CONSTRUCTION	BY	DATE	REVISION	DESCRIPTION
56	ISSUED FOR CONSTRUCTION	BY	DATE	REVISION	DESCRIPTION
57	ISSUED FOR CONSTRUCTION	BY	DATE	REVISION	DESCRIPTION
58	ISSUED FOR CONSTRUCTION	BY	DATE	REVISION	DESCRIPTION
59	ISSUED FOR CONSTRUCTION	BY	DATE	REVISION	DESCRIPTION
60	ISSUED FOR CONSTRUCTION	BY	DATE	REVISION	DESCRIPTION
61	ISSUED FOR CONSTRUCTION	BY	DATE	REVISION	DESCRIPTION
62	ISSUED FOR CONSTRUCTION	BY	DATE	REVISION	DESCRIPTION
63	ISSUED FOR CONSTRUCTION	BY	DATE	REVISION	DESCRIPTION
64	ISSUED FOR CONSTRUCTION	BY	DATE	REVISION	DESCRIPTION
65	ISSUED FOR CONSTRUCTION	BY	DATE	REVISION	DESCRIPTION
66	ISSUED FOR CONSTRUCTION	BY	DATE	REVISION	DESCRIPTION
67	ISSUED FOR CONSTRUCTION	BY	DATE	REVISION	DESCRIPTION
68	ISSUED FOR CONSTRUCTION	BY	DATE	REVISION	DESCRIPTION
69	ISSUED FOR CONSTRUCTION	BY	DATE	REVISION	DESCRIPTION
70	ISSUED FOR CONSTRUCTION	BY	DATE	REVISION	DESCRIPTION
71	ISSUED FOR CONSTRUCTION	BY	DATE	REVISION	DESCRIPTION
72	ISSUED FOR CONSTRUCTION	BY	DATE	REVISION	DESCRIPTION
73	ISSUED FOR CONSTRUCTION	BY	DATE	REVISION	DESCRIPTION
74	ISSUED FOR CONSTRUCTION	BY	DATE	REVISION	DESCRIPTION
75	ISSUED FOR CONSTRUCTION	BY	DATE	REVISION	DESCRIPTION
76	ISSUED FOR CONSTRUCTION	BY	DATE	REVISION	DESCRIPTION
77	ISSUED FOR CONSTRUCTION	BY	DATE	REVISION	DESCRIPTION
78	ISSUED FOR CONSTRUCTION	BY	DATE	REVISION	DESCRIPTION
79	ISSUED FOR CONSTRUCTION	BY	DATE	REVISION	DESCRIPTION
80	ISSUED FOR CONSTRUCTION	BY	DATE	REVISION	DESCRIPTION
81	ISSUED FOR CONSTRUCTION	BY	DATE	REVISION	DESCRIPTION
82	ISSUED FOR CONSTRUCTION	BY	DATE	REVISION	DESCRIPTION
83	ISSUED FOR CONSTRUCTION	BY	DATE	REVISION	DESCRIPTION
84	ISSUED FOR CONSTRUCTION	BY	DATE	REVISION	DESCRIPTION
85	ISSUED FOR CONSTRUCTION	BY	DATE	REVISION	DESCRIPTION
86	ISSUED FOR CONSTRUCTION	BY	DATE	REVISION	DESCRIPTION
87	ISSUED FOR CONSTRUCTION	BY	DATE	REVISION	DESCRIPTION
88	ISSUED FOR CONSTRUCTION	BY	DATE	REVISION	DESCRIPTION
89	ISSUED FOR CONSTRUCTION	BY	DATE	REVISION	DESCRIPTION
90	ISSUED FOR CONSTRUCTION	BY	DATE	REVISION	DESCRIPTION
91	ISSUED FOR CONSTRUCTION	BY	DATE	REVISION	DESCRIPTION
92	ISSUED FOR CONSTRUCTION	BY	DATE	REVISION	DESCRIPTION
93	ISSUED FOR CONSTRUCTION	BY	DATE	REVISION	DESCRIPTION
94	ISSUED FOR CONSTRUCTION	BY	DATE	REVISION	DESCRIPTION
95	ISSUED FOR CONSTRUCTION	BY	DATE	REVISION	DESCRIPTION
96	ISSUED FOR CONSTRUCTION	BY	DATE	REVISION	DESCRIPTION
97	ISSUED FOR CONSTRUCTION	BY	DATE	REVISION	DESCRIPTION
98	ISSUED FOR CONSTRUCTION	BY	DATE	REVISION	DESCRIPTION
99	ISSUED FOR CONSTRUCTION	BY	DATE	REVISION	DESCRIPTION
100	ISSUED FOR CONSTRUCTION	BY	DATE	REVISION	DESCRIPTION

SHELL CANADA
QUEST CCS PROJECT

FLUOR

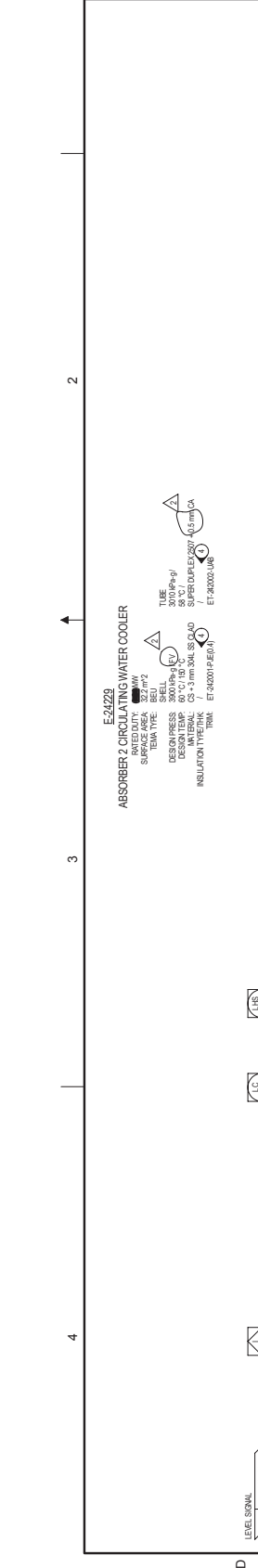
PIPING AND INSTRUMENT DIAGRAM
 QUEST CCS PROJECT
 UNIT 242 - HYDROGEN MANUFACTURING UNIT TRAIN 2
 ABSORBER 2 WASH WATER VESSEL

SCALE: NONE
 SHEET DWG NO.: 242.0000.000.04.1022

1837 2

NOTES:

1. SEE DRAWINGS 201.0000.000.041.007 THROUGH 045 FOR SYMBOL IDENTIFICATION
2. ALL INSTRUMENT TAG NUMBERS ARE PREFIXED BY 242 UNLESS OTHERWISE STATED
3. ALL INSTRUMENT TAG NUMBERS ARE PREFIXED BY 242 UNLESS OTHERWISE STATED
4. ELECTRIC TRACES ET 1000-2000 INSULATION THICKNESS
5. AUTO START STANDBY PUMP ON IN FAILURE OF PRIMARY PUMP
6. SAMPLE STATO COMMON TO HMI1 AND HMI2. SAMPLE STATION AND CONTINUED
7. REFER TO 201.0000.000.041.007 FOR SCAFFOLDING DETAILS.
8. CONNECTION TO BE USED AS VENT FOR MAINTENANCE.



ABSORBER 2 CIRCULATING WATER COOLER
E-24223

RATED DUTY: 1000000 LPM
 SHELL TYPE: BE3
 DESIGN PRESS: 100 PSI
 DESIGN TEMP: 60°C / 140°F
 INTERNAL CS-3mm 304L SS Q40
 INSULATION TYPE: TRIM ET-242001-PE-01

TUBE: P-242001-PE-01
 SUPERDRAPEX 200-15mm CA
 ET-242000-LAB



ABSORBER 2 CIRCULATING WATER WASH PUMPS
P-24208A/B

RATED FLOW: 1000000 LPM
 DESIGN PRESS: 100 PSI
 DESIGN TEMP: 60°C / 140°F
 INTERNAL CS-3mm 304L SS Q40
 INSULATION TYPE: TRIM ET-242001-PE-01



FLUOR
 IFC - Issued for Construction
 Jul 30, 2013

NO	ISSUED FOR CONSTRUCTION	BY	DATE	REVISION	DESCRIPTION
1	ISSUED FOR CONSTRUCTION	RS	08/14/13	1	ISSUED FOR CONSTRUCTION
2	ISSUED FOR CONSTRUCTION	RS	08/14/13	2	ISSUED FOR CONSTRUCTION
3	ISSUED FOR CONSTRUCTION	RS	08/14/13	3	ISSUED FOR CONSTRUCTION
4	ISSUED FOR CONSTRUCTION	RS	08/14/13	4	ISSUED FOR CONSTRUCTION
5	ISSUED FOR CONSTRUCTION	RS	08/14/13	5	ISSUED FOR CONSTRUCTION
6	ISSUED FOR CONSTRUCTION	RS	08/14/13	6	ISSUED FOR CONSTRUCTION
7	ISSUED FOR CONSTRUCTION	RS	08/14/13	7	ISSUED FOR CONSTRUCTION
8	ISSUED FOR CONSTRUCTION	RS	08/14/13	8	ISSUED FOR CONSTRUCTION
9	ISSUED FOR CONSTRUCTION	RS	08/14/13	9	ISSUED FOR CONSTRUCTION
10	ISSUED FOR CONSTRUCTION	RS	08/14/13	10	ISSUED FOR CONSTRUCTION
11	ISSUED FOR CONSTRUCTION	RS	08/14/13	11	ISSUED FOR CONSTRUCTION
12	ISSUED FOR CONSTRUCTION	RS	08/14/13	12	ISSUED FOR CONSTRUCTION

SHELL CANADA
 QUEST CCS PROJECT

FLUOR

PIPING AND INSTRUMENT DIAGRAM
 QUEST CCS PROJECT
 UNIT 242 - HYDROGEN MANUFACTURING UNIT TRAIN 2
 ABSORBER 2 WASH WATER COOLER

SCALE: NONE
 SHELL DWG NO.: 242.0000.000.041.023

242.023
 FILE: P:\242\W\MANUFACTURING\MANUFACTURING\MANUFACTURING UNIT TRAIN 2\MODELS\DWG\242.023.DWG (13/07/13 12:34:48 PM) BJK24516

1 2 3 4

A B C D