

## **Disclaimer**

This Report, including the data and information contained in this Report, is provided to you on an “as is” and “as available” basis at the sole discretion of the Government of Alberta and subject to the terms and conditions of use below (the “Terms and Conditions”). The Government of Alberta has not verified this Report for accuracy and does not warrant the accuracy of, or make any other warranties or representations regarding, this Report. Furthermore, updates to this Report may not be made available. Your use of any of this Report is at your sole and absolute risk.

This Report is provided to the Government of Alberta, and the Government of Alberta has obtained a license or other authorization for use of the Reports, from:

Shell Canada Energy, Chevron Canada Limited. and Marathon Oil Canada Corporation, for the Quest Project

(collectively the “Project”)

Each member of the Project expressly disclaims any representation or warranty, express or implied, as to the accuracy or completeness of the material and information contained herein, and none of them shall have any liability, regardless of any negligence or fault, for any statements contained in, or for any omissions from, this Report. Under no circumstances shall the Government of Alberta or the Project be liable for any damages, claims, causes of action, losses, legal fees or expenses, or any other cost whatsoever arising out of the use of this Report or any part thereof or the use of any other data or information on this website.

## **Terms and Conditions of Use**

Except as indicated in these Terms and Conditions, this Report and any part thereof shall not be copied, reproduced, distributed, republished, downloaded, displayed, posted or transmitted in any form or by any means, without the prior written consent of the Government of Alberta and the Project.

The Government of Alberta’s intent in posting this Report is to make them available to the public for personal and non-commercial (educational) use. You may not use this Report for any other purpose. You may reproduce data and information in this Report subject to the following conditions:

- any disclaimers that appear in this Report shall be retained in their original form and applied to the data and information reproduced from this Report
- the data and information shall not be modified from its original form
- the Project shall be identified as the original source of the data and information, while this website shall be identified as the reference source, and
- the reproduction shall not be represented as an official version of the materials reproduced, nor as having been made in affiliation with or with the endorsement of the Government of Alberta or the Project

By accessing and using this Report, you agree to indemnify and hold the Government of Alberta and the Project, and their respective employees and agents, harmless from and against any and all claims, demands, actions and costs (including legal costs on a solicitor-client basis) arising out of any breach by you of these Terms and Conditions or otherwise arising out of your use or reproduction of the data and information in this Report.

Your access to and use of this Report is subject exclusively to these Terms and Conditions and any terms and conditions contained within the Report itself, all of which you shall comply with. You will not use this Report for any purpose that is unlawful or prohibited by these Terms and Conditions. You agree that any other use of this Report means you agree to be bound by these Terms and Conditions. These Terms and Conditions are subject to modification, and you agree to review them periodically for changes. If you do not accept these Terms and Conditions you agree to immediately stop accessing this Report and destroy all copies in your possession or control.

These Terms and Conditions may change at any time, and your continued use and reproduction of this Report following any changes shall be deemed to be your acceptance of such change.

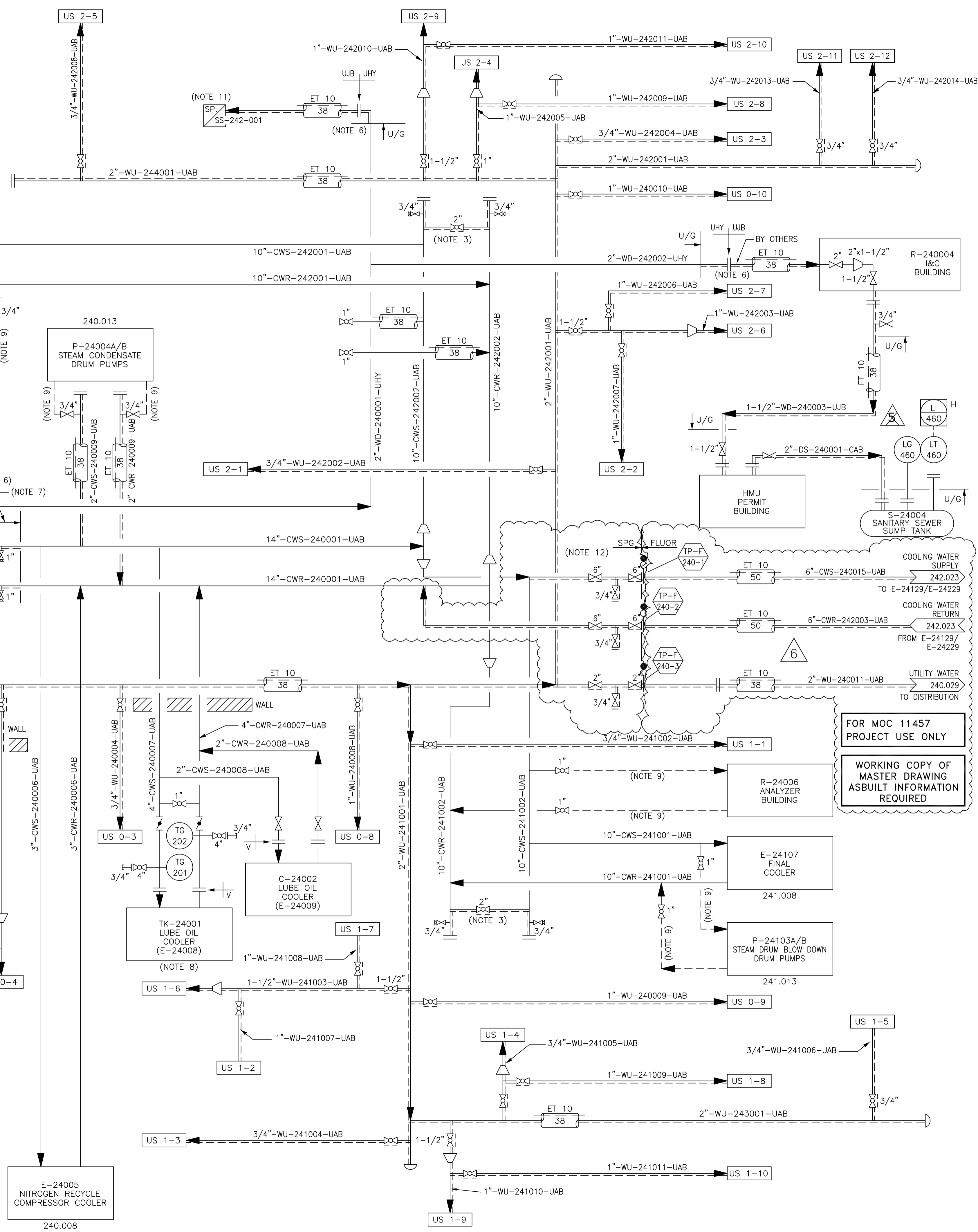
If any of these Terms and Conditions should be determined to be invalid, illegal or unenforceable for any reason by any court of competent jurisdiction then the applicable provision shall be severed and the remaining provisions of these Terms and Conditions shall survive and remain in full force and effect and continue to be binding and enforceable.

These Terms and Conditions shall: (i) be governed by and construed in accordance with the laws of the province of Alberta and you hereby submit to the exclusive jurisdiction of the Alberta courts, and (ii) ensure to the benefit of, and be binding upon, the Government of Alberta and your respective successors and assigns.

FOR MOC 11457  
PROJECT USE ONLY

WORKING COPY OF  
MASTER DRAWING  
ASBUILT INFORMATION  
REQUIRED

6	13 SEP 30	RE-ISSUED IFC ON NEXT HARD REV (MOC 11457)	GB	CC	LMF	KH	CV
5j	13 JUN 18	ISSUED FOR CONSTRUCTION (MOC 11457)	GB	KB	SL	KH	EM
5i	12 JUL 24	ISSUED FOR CONSTRUCTION (MOC 11457)	GB	BS	LMF	KH	EM
5h	11 SEP 15	ISSUED FOR DESIGN	GB	SJ	LMF	KH	EM
5g	11 JUL 11	ISSUED FOR PHA III					
5f	11 APR 20	ISSUED FOR ESTIMATE					
5e	11 MAR 01	ISSUED FOR PHA II					
5d	11 JAN 10	ISSUED FOR CLIENT REVIEW					
5c	10 DEC 02	ISSUED FOR INTERNAL REVIEW					
5b	10 NOV 04	ISSUED FOR PRELIMINARY REVIEW					
REV	ISSUED DATE	DESCRIPTION	DWN	CHKD	ENG	APP	CLNT APP
TITLE MOC 11457 - QUEST CCS PROJECT							



- NOTES**
- ALL DOMESTIC WATER LATERALS TO SAFETY SHOWERS TO BE ELECTRICALLY TRACED TO MAINTAIN 10°C, WITH 38 mm INSULATION.
  - SEE ESTG 3-1.01, FIGURE A-10 FOR HIGH PRESSURE STEAM BLOW OFF DETAILS.
  - ELECTRIC TRACE END OF COOLING WATER HEADERS FOR FREEZE PROTECTION. ET 10 38
  - SEE ESTG 3-1.01, PARAGRAPH 4.8.1 AND FIGURES A-18 THRU A-21 FOR UTILITY STATION DETAILS.
  - 3/4" UTILITY STATION LINES INCLUDE TUBING RUNS, TUBING INTERFACES AT PIPERACK AND UTILITY STATION SHOWN ON PIPING ISOMETRICS.
  - TRACE AND INSULATE TO 150 mm BELOW FROST LINE. ET 10 63
  - TRACE AND INSULATE TO 150 mm ABOVE DRAIN CONNECTION. ET 10 63
  - SEE FLUID SYSTEMS P&ID F1389-1 FOR DETAILS.
  - COOLING WATER FOR SAMPLE AND PUMP SEAL COOLER SYSTEM. TUBING OR PIPE FROM BLOCK VALVES BY FIELD.

- KEY PLAN**
- NOTES: (CONT'D)
- UTILITY WATER LINES TRACED. SYMBOL NOT SHOWN ON EACH LINE. ET 10 38
  - REFER TO VENDOR P&ID FOR FURTHER DETAILS. (ENCON SAFETY PRODUCTS, DWG. #D1792)
  - SPG PIPING SCOPE ADJACENT TO MOC PACKAGE 11457 DOES NOT CURRENTLY EXIST. VERIFY TIE-INS PRIOR TO INSTALLATION. MOC 11457 6

**REFERENCE DRAWINGS**

5	MAY 3, 10	SEE CHANGE LIST 240.000.000.041.003	DRS	RM			
4	04 JUN 14	SEE CHANGE LIST 240.000.000.041.003	JXL	HWF			
2	02 SEP 18	AS-BUILT	LWM	EG	AAI	MWP	HRM
1	01 MAY 17	IFC: REVISED AS NOTED	WZF	EG	RAM	MWP	HRM
0	09 SEP 29	IFC: ISSUED FOR CONSTRUCTION	LWM	SW	SW	DLA	HRM
REV	ISSUED DATE	DESCRIPTION	DWN	CHKD	ENG	APP	CLNT APP

DRAWING REVISION "0" AFFIXED WITH P.ENG. STAMP ON 00.10.16 AND STAMPED BY: ROBERT A. MACDONALD.		FULL SIZE VERSION OF THIS DRAWING STAMPED WITH PERMIT TO PRACTICE AT REV.0	
---	--	--	--

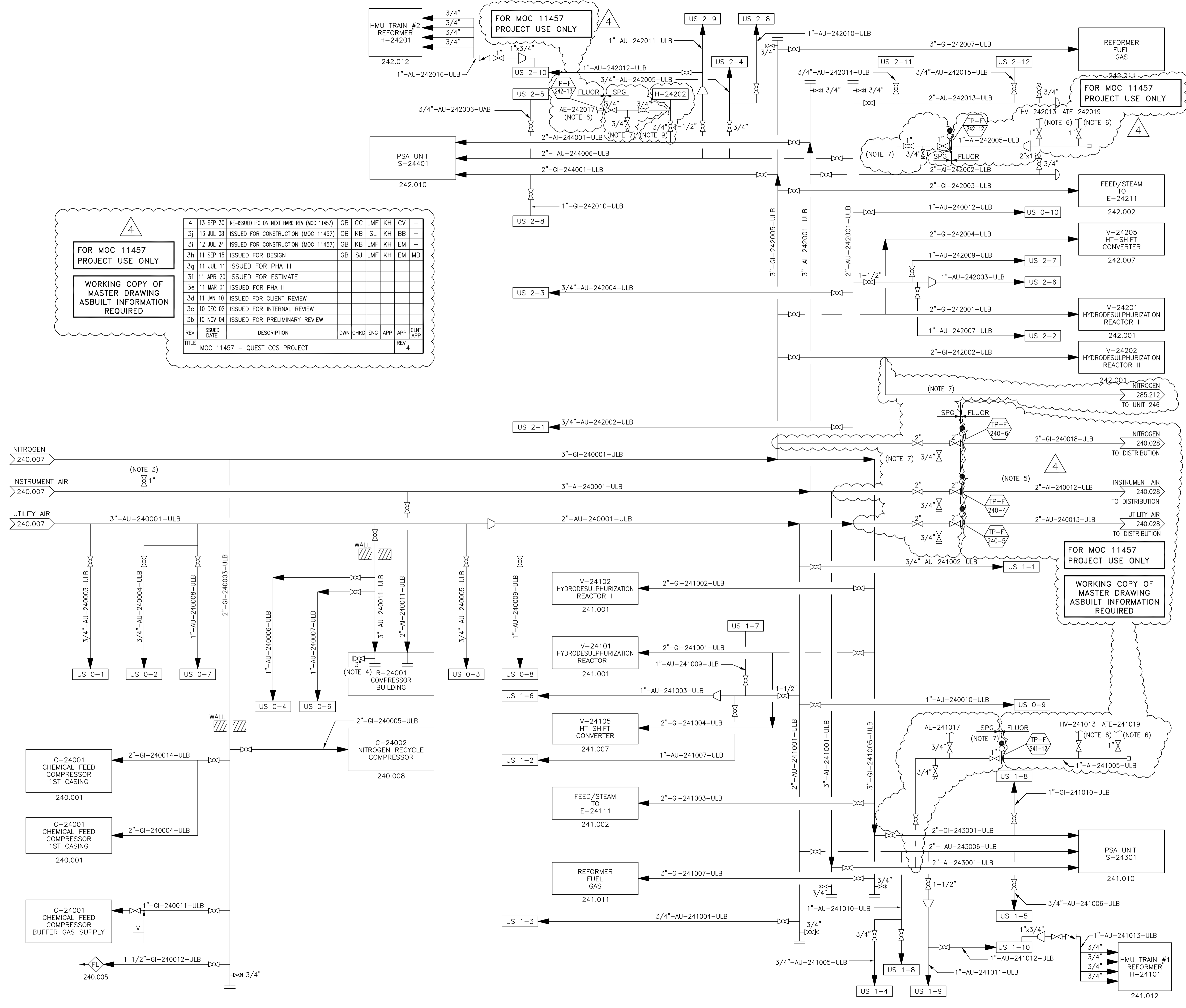
**ISSUED FOR CONSTRUCTION**  
21 Oct 2013

**SHELL CANADA LTD.**  
ATHABASCA OIL SANDS  
DOWNSTREAM PROJECT

PARSONS . KRUPP UHDE . TRI OCEAN

PIPING AND INSTRUMENTATION DIAGRAM  
HYDROGEN MANUFACTURING UNIT  
COOLING WATER, DOMESTIC WATER AND  
UTILITY WATER QUEST TIE-INS

SCALE: NTS	TOE DWG. No.: 99049-0-DG-BC-00003.1
SHELL DWG NO.: 240.000.000.041.003	REV 5



- NOTES**
- USE 2-INCH NITROGEN LINE TO EACH PSA UNIT FOR PURGING.
  - 3/4" UTILITY STATION LINES INCLUDE TUBING RUNS. TUBING INTERFACES AT PIPERACK AND UTILITY STATION SHOWN ON PIPING ISOMETRICS.
  - TYPICAL EVERY 6 m IN THE PIPERACKS.
  - VALVE FOR AIR SUPPLY TO COMPRESSOR BUILDING CRANE.
  - INSTRUMENT AIR HEADER PRESSURE IS REGULATED BY 240PC333. HEADER PRESSURE IS REDUCED BY 100 kPa.
  - TUBING BY CONTROL SYSTEMS.
  - SPG PIPING SCOPE ADJACENT TO MOC PACKAGE 11457 DOES NOT CURRENTLY EXIST. VERIFY TIE-INS PRIOR TO INSTALLATION.
  - DELETED.
  - EXISTING PIPING, P&ID AS-BUILT ONLY. SPG TO CONFIRM EXISTING PIPING FOR TIE-IN.

**KEY PLAN**

**REFERENCE DRAWINGS**

REV	ISSUED DATE	DESCRIPTION	DWN	CHKD	ENG	APP	APP	CLNT APP
3	04 JUN 23	CHANGE LIST 240.0000.000.041.004						
2	02 SEP 18	AS-BUILT						
1	01 MAY 17	IFC: REVISED AS NOTED						
0	00 OCT 02	IFC: ISSUED FOR CONSTRUCTION						

**ISSUED FOR CONSTRUCTION**  
21 Oct 2013

REV	ISSUED DATE	DESCRIPTION	DWN	CHKD	ENG	APP	APP	CLNT APP
3	04 JUN 23	CHANGE LIST 240.0000.000.041.004						
2	02 SEP 18	AS-BUILT						
1	01 MAY 17	IFC: REVISED AS NOTED						
0	00 OCT 02	IFC: ISSUED FOR CONSTRUCTION						

DRAWING REVISION "0" AFFIXED WITH P.ENG. STAMP ON 00.10.16 AND STAMPED BY: ROBERT A. MACDONALD.

FULL SIZE VERSION OF THIS DRAWING STAMPED WITH PERMIT TO PRACTICE AT REV.0

**SHELL CANADA LTD.**  
ATHABASCA OIL SANDS  
DOWNSTREAM PROJECT

PARSONS . KRUPP UHDE . TRI OCEAN

**PIPING AND INSTRUMENTATION DIAGRAM**  
HYDROGEN MANUFACTURING UNIT  
PLANT AIR, INSTRUMENT AIR AND NITROGEN  
QUEST TIE-INS

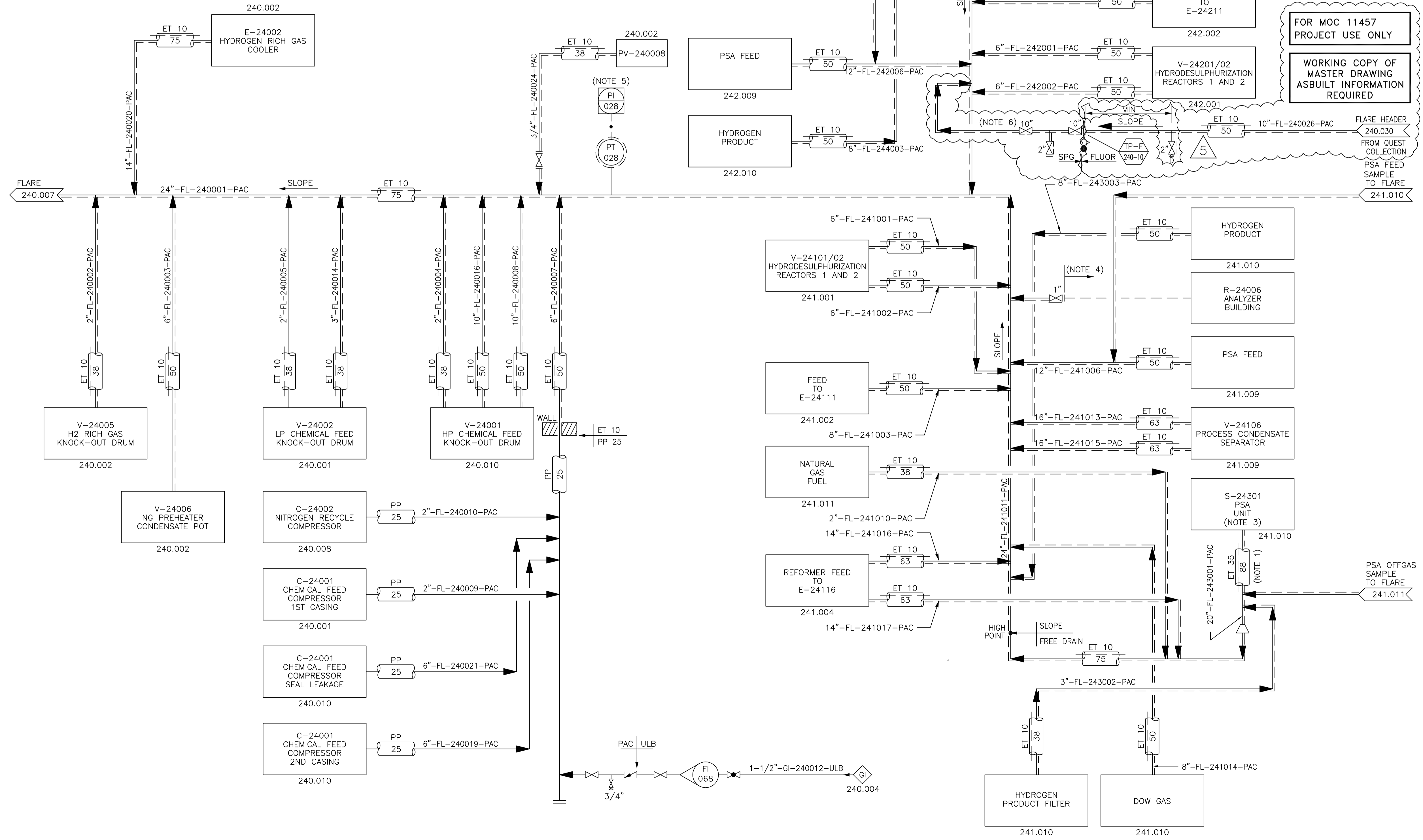
SCALE: NTS TOE DWG. No.: 99049-0G-DG-BC-00004.1  
SHELL DWG NO.: 240.0000.000.041.004

FOR MOC 11457  
PROJECT USE ONLY

WORKING COPY OF  
MASTER DRAWING  
ASBUILT INFORMATION  
REQUIRED

5	13 SEP 30	RE-ISSUED IFC ON NEXT HARD REV (MOC 11457)	GB	CC	LMF	KH	CV	-
4j	13 JUN 18	ISSUED FOR CONSTRUCTION (MOC 11457)	GB	KB	SL	KH	EM	
4i	12 JUL 24	ISSUED FOR CONSTRUCTION (MOC 11457)	GB	BS	LMF	KH	EM	
4h	11 SEP 15	ISSUED FOR DESIGN	GB	SJ	LMF	KH	EM	MD
4g	11 JUL 11	ISSUED FOR PHA III						
4f	11 APR 20	ISSUED FOR ESTIMATE						
4e	11 MAR 01	ISSUED FOR PHA II						
4d	11 JAN 10	ISSUED FOR CLIENT REVIEW						
4c	10 DEC 02	ISSUED FOR INTERNAL REVIEW						
4b	10 NOV 04	ISSUED FOR PRELIMINARY REVIEW						
REV	ISSUED DATE	DESCRIPTION	DWN	CHKD	ENG	APP	APP	CLNT APP
		MOC 11457 - QUEST CCS PROJECT						REV 5

PSA FEED  
SAMPLE  
TO FLARE  
242.010



FOR MOC 11457  
PROJECT USE ONLY

WORKING COPY OF  
MASTER DRAWING  
ASBUILT INFORMATION  
REQUIRED

- NOTES**
- HEAT TRACE TO MAINTAIN 35 DEG. C ON PSA FLARE HEADER UP TO TIE-IN TO HMU FLARE, THEN HEAT TRACE TO MAINTAIN 10 DEG. C.
  - THE UNIT NUMBER, 240 HAS BEEN OMITTED FROM THE INSTRUMENTATION IDENTIFICATION NUMBERS FOR IMPROVED READABILITY.
  - NITROGEN PURGE TO BE INSTALLED BY PSA VENDOR ON PSA FLARE HEADER. PSA UNITS HAVE BOOT IN FLARE HEADER THAT CAN BE DRAINED TO OILY WATER SEWER.
  - TUBING OR PIPE FROM BLOCK VALVE BY OTHERS.
  - FLARE HEADER PRESSURE VALUE USED BY PSA LOGIC FOR PDI-243183. SEE P&ID 00-0-9995 P&ID 0001 SHEET 9.
  - SPG PIPING SCOPE ADJACENT TO MOC PACKAGE 11457 DOES NOT CURRENTLY EXIST. VERIFY TIE-INS PRIOR TO INSTALLATION.

**KEY PLAN**

**REFERENCE DRAWINGS**

REV	ISSUED DATE	DESCRIPTION	DWN	CHKD	ENG	APP	APP	CLNT APP
4	03 FEB 03	CHANGE LIST 240.0000.000.041.005	HLR	JA	GS			
3	02 SEP 18	AS-BUILT	LWM	EG	AAI	MWP	HRM	
2	01 OCT 29	IFC: REVISED AS NOTED	LWM	EG	GSZ	MWP	HRM	
1	01 MAY 17	IFC: REVISED AS NOTED	WZF	EG	RAMCMWP	HRM		
0	00 OCT 02	IFC: ISSUED FOR CONSTRUCTION	LWM	SW	SW	DLA	HRM	

**ISSUED FOR CONSTRUCTION**  
21 Oct 2013

DRAWING REVISION "0"  
AFFIXED WITH P.ENG.  
STAMP ON 00.10.16  
AND STAMPED BY:  
ROBERT A. MACDONALD.

FULL SIZE VERSION OF THIS DRAWING  
STAMPED WITH PERMIT TO PRACTICE  
AT REV.0

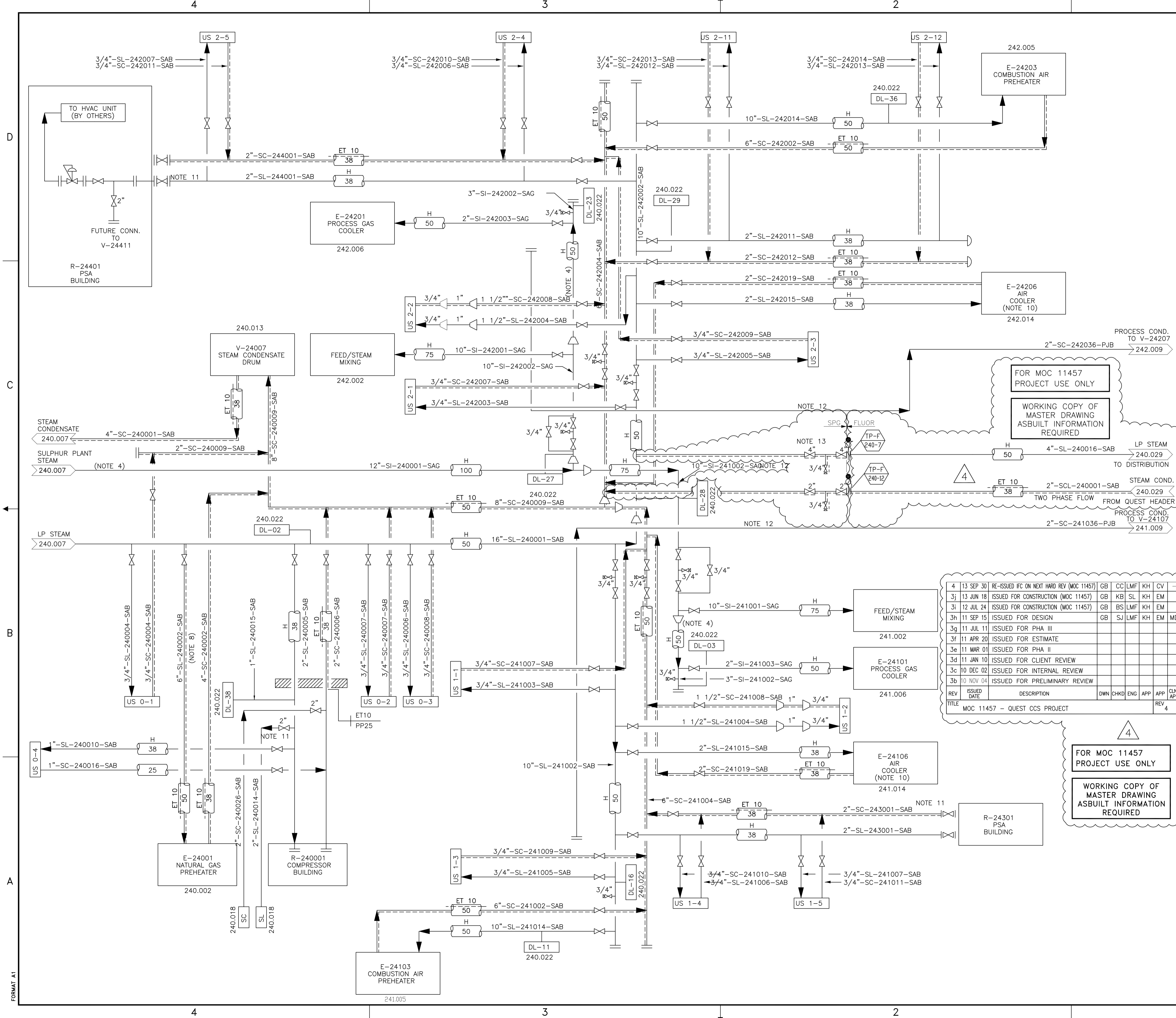


**SHELL CANADA LTD.**  
ATHABASCA OIL SANDS  
DOWNSTREAM PROJECT

PARSONS . KRUPP UHDE . TRI OCEAN

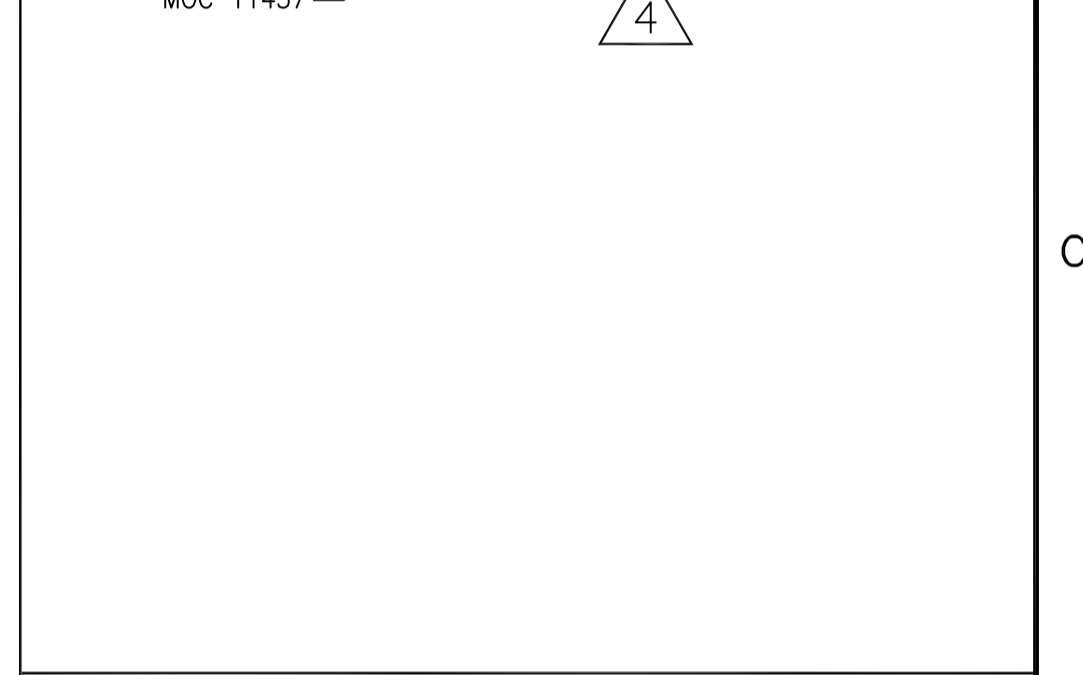
**PIPING AND INSTRUMENTATION DIAGRAM**  
**HYDROGEN MANUFACTURING UNIT**  
**FLARE**  
**QUEST TIE-INS**

SCALE: NTS TOE DWG. No.: 99049-0-DG-BC-00005.1  
SHELL DWG NO.: 240.000.000.041.005



- NOTES**
- SEE ESTG 3-1.01, PARAGRAPH 4.8.1 AND FIGURES A-18 THRU A-21 FOR UTILITY STATION DETAILS.
  - SEE ESTG 3-1.01, FIGURES A-8, A-13, AND A-14 FOR TYPICAL CONDENSATE BOOT AND DRIP LEG HOOK-UPS.
  - SEE ESTG 3-1.01, FIGURE A-10 FOR HIGH PRESSURE STEAM BLOW OFF DETAILS.
  - SATURATED STEAM TRAP AT ALL LOW POINTS AND IN HEADERS PER ESTG, INCLUDING END OF RUNS.
  - 3/4" UTILITY STATION LINES INCLUDE TUBING RUNS, TUBING INTERFACES AT PIPERACK AND UTILITY STATION SHOWN ON PIPING ISOMETRICS.
  - ALL 1" STEAM CONDENSATE RETURNS FROM UTILITY STATIONS TO BE INSULATED (H 38) AND TRACED (ET 10).
  - ALL 1" STEAM LINES TO UTILITY STATIONS TO BE INSULATED (H 38).
  - TRACE SECTION OF LINE NOT PROTECTED BY STEAM TRAPS.
  - PROVIDE WEEP HOLE AT LOW POINT PER ESTG 25-1.02 SECTION 5.3.3
  - TOTAL OF FOUR STEAM LINES AND FOUR CONDENSATE RETURN LINES PER TRAIN. FOR TRAIN 241, STEAM LINES ARE 241015/20/21/22. CONDENSATE LINES ARE 241019/20/21/22.
  - FLANGES PROVIDED FOR HVAC VENDOR HEATING REQUIREMENTS. PIPING BY OTHERS.

- KEY PLAN**
- PROCESS STEAM TRAP SUB HEADER (SEE DWG. 240.022).
  - SPG PIPING SCOPE ADJACENT TO MOC PACKAGE 11457 DOES NOT CURRENTLY EXIST. VERIFY TIE-INS PRIOR TO INSTALLATION.



**REFERENCE DRAWINGS**

**ISSUED FOR CONSTRUCTION**  
21 Oct 2013

**CRITICAL DOCUMENT**  
AS-BUILT INFORMATION REQUIRED

REV	ISSUED DATE	DESCRIPTION	DWN	CHKD	ENG	APP	APP	CLNT APP	REV
4	13 SEP 30	RE-ISSUED IFC ON NEXT HARD REV (MOC 11457)	GB	CC	LMF	KH	CV	-	-
3j	13 JUN 18	ISSUED FOR CONSTRUCTION (MOC 11457)	GB	KB	SL	KH	EM	-	-
3i	12 JUL 24	ISSUED FOR CONSTRUCTION (MOC 11457)	GB	BS	LMF	KH	EM	-	-
3h	11 SEP 15	ISSUED FOR DESIGN	GB	SJ	LMF	KH	EM	MD	-
3g	11 JUL 11	ISSUED FOR PHA III	-	-	-	-	-	-	-
3f	11 APR 20	ISSUED FOR ESTIMATE	-	-	-	-	-	-	-
3e	11 MAR 01	ISSUED FOR PHA II	-	-	-	-	-	-	-
3d	11 JAN 10	ISSUED FOR CLIENT REVIEW	-	-	-	-	-	-	-
3c	10 DEC 02	ISSUED FOR INTERNAL REVIEW	-	-	-	-	-	-	-
3b	10 NOV 04	ISSUED FOR PRELIMINARY REVIEW	-	-	-	-	-	-	-

TITLE: MOC 11457 - QUEST CCS PROJECT

REV	ISSUED DATE	DESCRIPTION	DWN	CHKD	ENG	APP	APP	CLNT APP
3	10/04/16	SEE CHANGE LIST 240.0000.000.041.006	DRS	RM	-	-	-	-
2	02 SEP 18	AS BUILT	RVM	EG	AAI	MWP	HRM	-
1	01 MAY 17	IFC: REVISED AS NOTED	WZE	EG	RAMCMWP	-	HRM	-
0	00 OCT 05	IFC: ISSUED FOR CONSTRUCTION	WF	SW	DLA	-	HRM	-

DRAWING REVISION "0" AFFIXED WITH P.ENG. STAMP ON 00.10.16 AND STAMPED BY: ROBERT A. MACDONALD.

FULL SIZE VERSION OF THIS DRAWING STAMPED WITH PERMIT TO PRACTICE AT REV.0

**SHELL CANADA LTD.**  
ATHABASCA OIL SANDS  
DOWNSTREAM PROJECT

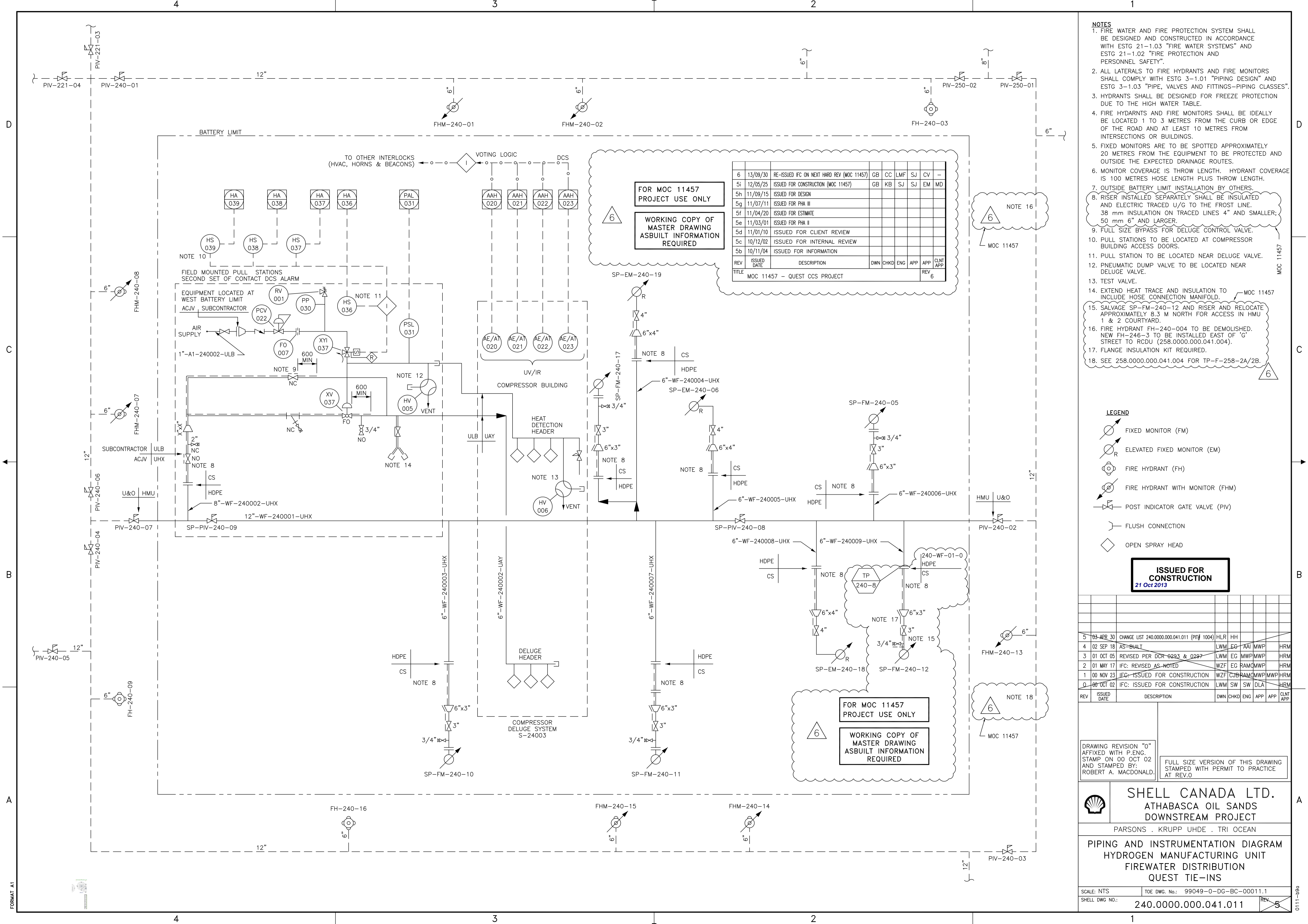
PARSONS . KRUPP UHDE . TRI OCEAN

**PIPING AND INSTRUMENTATION DIAGRAM**  
HYDROGEN MANUFACTURING UNIT  
STEAM AND STEAM CONDENSATE  
QUEST TIE-INS

SCALE: NTS TOE DWG. No.: 99049-0-DG-BC-00006.1  
SHELL DWG NO.: 240.000.000.041.006

FORMAT A1

0061-0995



- NOTES**
- FIRE WATER AND FIRE PROTECTION SYSTEM SHALL BE DESIGNED AND CONSTRUCTED IN ACCORDANCE WITH ESTG 21-1.03 "FIRE WATER SYSTEMS" AND ESTG 21-1.02 "FIRE PROTECTION AND PERSONNEL SAFETY".
  - ALL LATERALS TO FIRE HYDRANTS AND FIRE MONITORS SHALL COMPLY WITH ESTG 3-1.01 "PIPING DESIGN" AND ESTG 3-1.03 "PIPE, VALVES AND FITTINGS-PIPING CLASSES".
  - HYDRANTS SHALL BE DESIGNED FOR FREEZE PROTECTION DUE TO THE HIGH WATER TABLE.
  - FIRE HYDRANTS AND FIRE MONITORS SHALL BE IDEALLY BE LOCATED 1 TO 3 METRES FROM THE CURB OR EDGE OF THE ROAD AND AT LEAST 10 METRES FROM INTERSECTIONS OR BUILDINGS.
  - FIXED MONITORS ARE TO BE SPOTTED APPROXIMATELY 20 METRES FROM THE EQUIPMENT TO BE PROTECTED AND OUTSIDE THE EXPECTED DRAINAGE ROUTES.
  - MONITOR COVERAGE IS THROW LENGTH. HYDRANT COVERAGE IS 100 METRES HOSE LENGTH PLUS THROW LENGTH.
  - OUTSIDE BATTERY LIMIT INSTALLATION BY OTHERS.
  - RISER INSTALLED SEPARATELY SHALL BE INSULATED AND ELECTRIC TRACED U/G TO THE FROST LINE. 38 mm INSULATION ON TRACED LINES 4" AND SMALLER; 50 mm 6" AND LARGER.
  - FULL SIZE BYPASS FOR DELUGE CONTROL VALVE.
  - PULL STATIONS TO BE LOCATED AT COMPRESSOR BUILDING ACCESS DOORS.
  - PULL STATION TO BE LOCATED NEAR DELUGE VALVE.
  - PNEUMATIC DUMP VALVE TO BE LOCATED NEAR DELUGE VALVE.
  - TEST VALVE.
  - EXTEND HEAT TRACE AND INSULATION TO INCLUDE HOSE CONNECTION MANIFOLD.
  - SALVAGE SP-FM-240-12 AND RISER AND RELOCATE APPROXIMATELY 8.3 M NORTH FOR ACCESS IN HMU 1 & 2 COURTYARD.
  - FIRE HYDRANT FH-240-004 TO BE DEMOLISHED. NEW FH-246-3 TO BE INSTALLED EAST OF 'G' STREET TO RCDU (258.0000.000.041.004).
  - FLANGE INSULATION KIT REQUIRED.
  - SEE 258.0000.000.041.004 FOR TP-F-258-2A/2B.

REV	ISSUED DATE	DESCRIPTION	DWN	CHKD	ENG	APP	APP	CLNT APP
6	13/09/30	RE-ISSUED IFC ON NEXT HARD REV (MOC 11457)	GB	CC	LMF	SJ	CV	-
5i	12/05/25	ISSUED FOR CONSTRUCTION (MOC 11457)	GB	KB	SJ	SJ	EM	MD
5g	11/07/11	ISSUED FOR PHA III						
5f	11/04/20	ISSUED FOR ESTIMATE						
5e	11/03/01	ISSUED FOR PHA II						
5d	11/01/10	ISSUED FOR CLIENT REVIEW						
5c	10/12/02	ISSUED FOR INTERNAL REVIEW						
5b	10/11/04	ISSUED FOR INFORMATION						
REV	ISSUED DATE	DESCRIPTION	DWN	CHKD	ENG	APP	APP	CLNT APP
		MOC 11457 - QUEST CCS PROJECT						REV 6

- LEGEND**
- FIXED MONITOR (FM)
  - <sub>R</sub> ELEVATED FIXED MONITOR (EM)
  - <sub>FH</sub> FIRE HYDRANT (FH)
  - <sub>FHM</sub> FIRE HYDRANT WITH MONITOR (FHM)
  - ⊥ POST INDICATOR GATE VALVE (PIV)
  - ⊥ FLUSH CONNECTION
  - ◇ OPEN SPRAY HEAD

**ISSUED FOR CONSTRUCTION**  
21 Oct 2013

REV	ISSUED DATE	DESCRIPTION	DWN	CHKD	ENG	APP	APP	CLNT APP
5	03 APR 30	CHANGE LIST 240.0000.000.041.011 (PIF# 1004)	HLR	HH				
4	02 SEP 18	AS-BUILT	LWM	EG	AAJ	MWP	HRM	
3	01 OCT 05	REVISED PER DCR-0293 & 0297	LWM	EG	MWP	MWP	HRM	
2	01 MAY 17	IFC: REVISED AS-NOTED	WZF	EG	RAM	MWP	HRM	
1	00 NOV 23	IFC: ISSUED FOR CONSTRUCTION	WZF	CJB	RAM	MWP	HRM	
0	00 OCT 02	IFC: ISSUED FOR CONSTRUCTION	LWM	SW	SW	DLA	HRM	
REV	ISSUED DATE	DESCRIPTION	DWN	CHKD	ENG	APP	APP	CLNT APP

DRAWING REVISION "0" AFFIXED WITH P.ENG. STAMP ON 00 OCT 02 AND STAMPED BY: ROBERT A. MACDONALD.

FULL SIZE VERSION OF THIS DRAWING STAMPED WITH PERMIT TO PRACTICE AT REV.0

**SHELL CANADA LTD.**  
ATHABASCA OIL SANDS  
DOWNSTREAM PROJECT

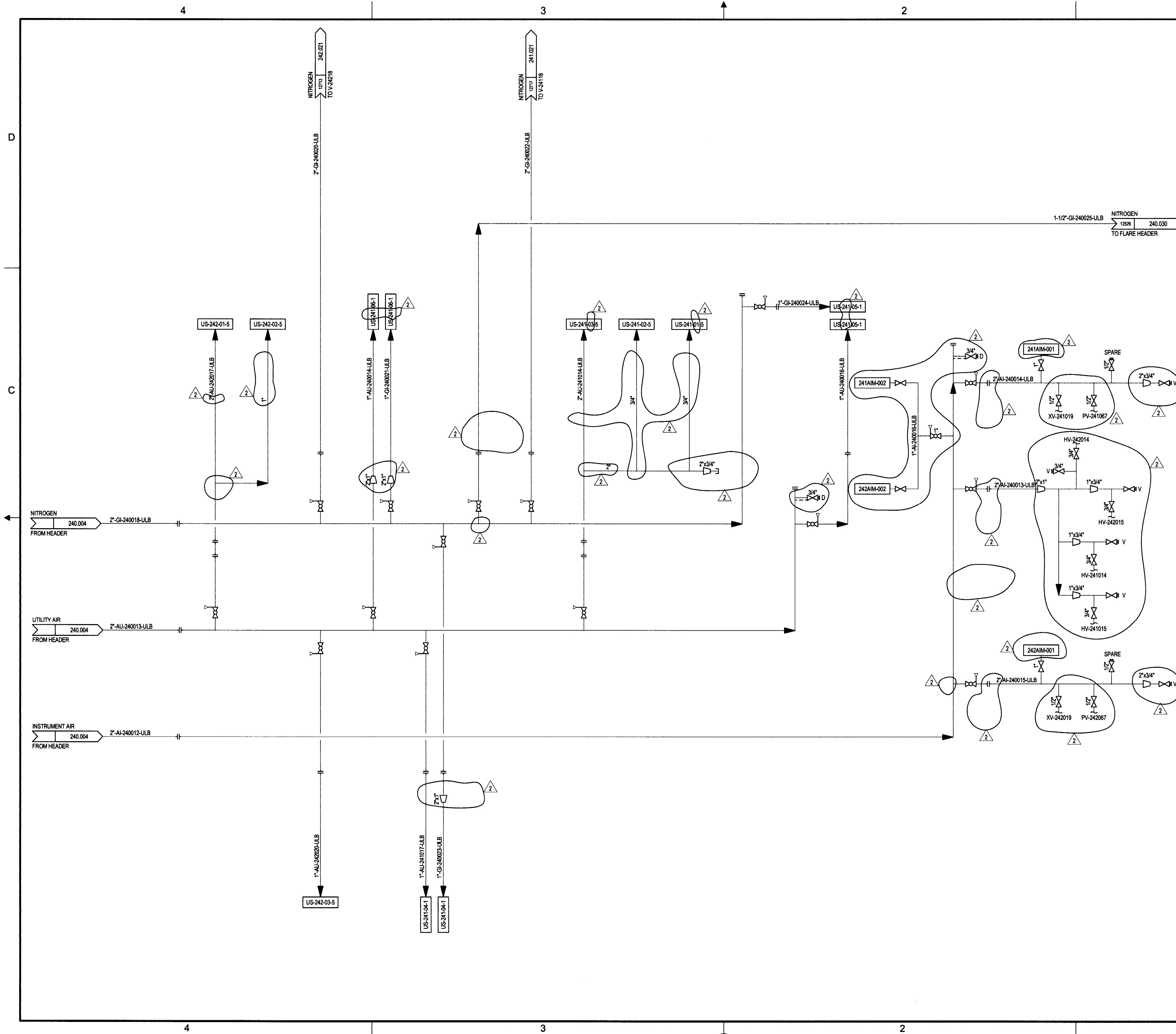
PARSONS . KRUPP UHDE . TRI OCEAN

**PIPING AND INSTRUMENTATION DIAGRAM**  
HYDROGEN MANUFACTURING UNIT  
FIREWATER DISTRIBUTION  
QUEST TIE-INS

SCALE: NTS TOE DWG. No.: 99049-0-DG-BC-00011.1  
SHELL DWG NO.: 240.0000.000.041.011

FORMAT A1

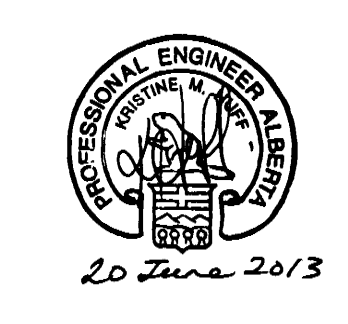
0111-896



- NOTES:**
- SEE DRAWINGS 200.0000.000.041.007 THRU 016 FOR SYMBOL IDENTIFICATION GENERAL NOTES & CONNECTION DETAILS.
  - REFER TO DEP 31.38.01.11 PIPING DESIGN GENERAL REQUIREMENTS SECTION 5.8 AND FIGURE 18-2 TO 18-5 FOR UTILITY STATION DETAILS.
  - PIPING HEADER BRANCH CONNECTIONS SHALL BE MADE ON TOP OF PIPE AND BE VALVED.

**FLUOR**  
 IFC – Issued for Construction  
 Jul 30, 2013

REV	ISSUED DATE	DESCRIPTION	BY	CKD	PRS	CS	PDP	MC	APF	PEM	CLIENT APP
2	06/18/13	ISSUED FOR CONSTRUCTION									
1	08/03/12	ISSUED FOR CONSTRUCTION	GB	KB	KH	LWF					EM
0	09/15/11	ISSUED FOR DESIGN	GB	SJ	KH	LWF					EM, SP
G	07/11/11	ISSUED FOR PHA III									
F	04/20/11	ISSUED FOR ESTIMATE									
E	03/01/11	ISSUED FOR PHA II									
D	01/01/11	ISSUED FOR CLIENT REVIEW									



**PERMIT TO PRACTICE**  
**FLUOR CANADA LTD.**  
 Signature: *[Signature]*  
 Date: *20 June 2013*  
**PERMIT NUMBER: P 0778**  
 The Association of Professional Engineers, Geologists and Geophysicists of Alberta



**SHELL CANADA**  
 QUEST CCS PROJECT

**FLUOR**

PIPING AND INSTRUMENT DIAGRAM  
 QUEST CCS PROJECT  
 UNIT 240 - HYDROGEN MANUFACTURING UNIT  
 INSTR. AIR UTILITY AIR AND NITROGEN DISTRIBUTION

SCALE: NONE  
 SHELL DWG NO.: 240.0000.000.041.028  
 REV. 2

240.028  
 FILE: P:\11025\DRAWINGS\SHM\240000.028.dwg MODEL DATE: 6/18/2013 12:52:12 PM BY: mds4951





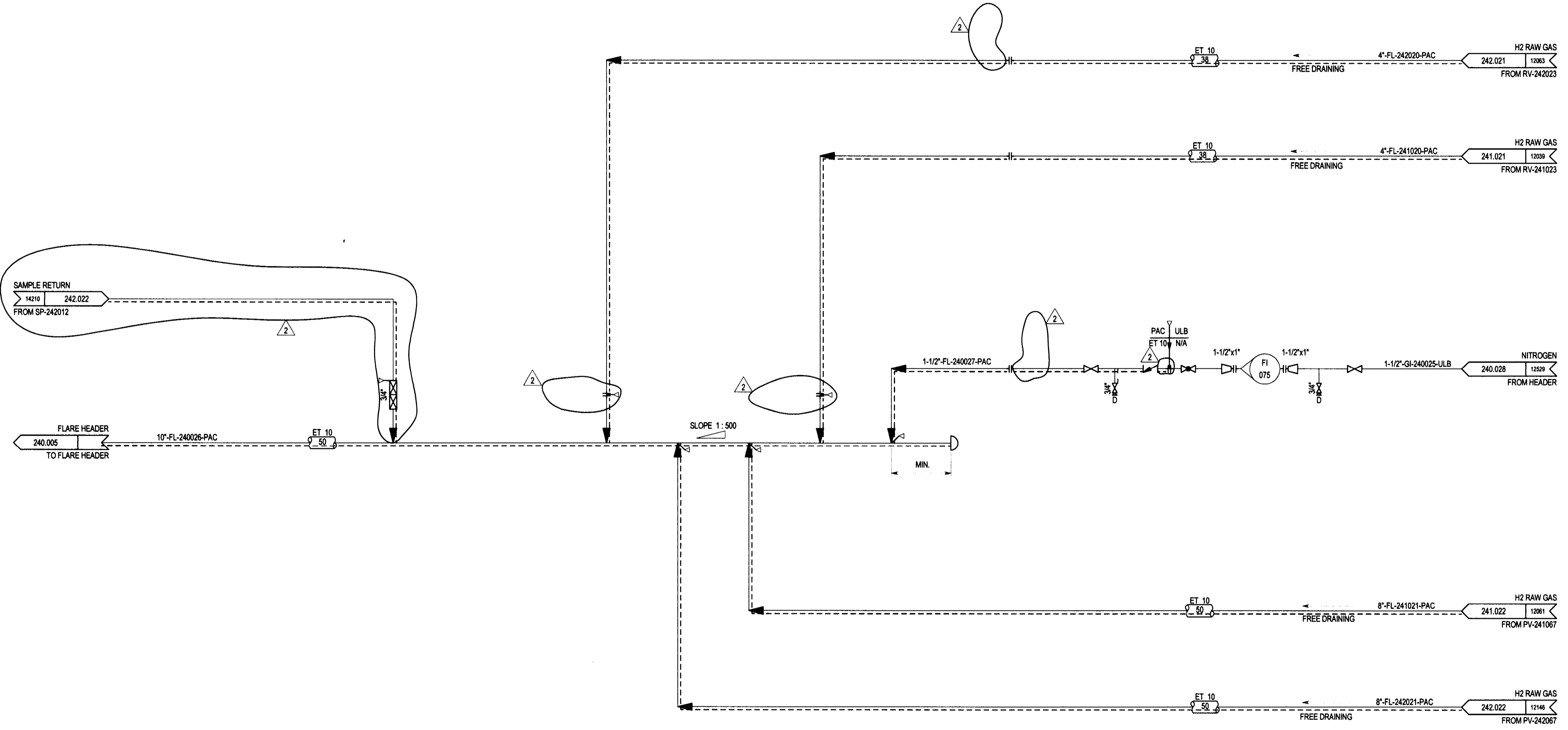
4

3

2

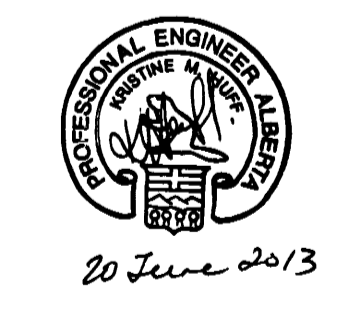
1

- NOTES:
- SEE DRAWINGS 200.0000.000.041.007 THRU 016 FOR SYMBOL IDENTIFICATION GENERAL NOTES & CONNECTION DETAILS.
  - ALL INSTRUMENT TAG NUMBERS ARE PREFIXED BY "240" UNLESS OTHERWISE STATED.



**FLUOR**  
IFC – Issued for Construction  
Jul 30, 2013

REV	DATE	DESCRIPTION	BY	CHK	PRS	CS	POP	MC	AFE	PEM	CLIENT APP
2	06/18/13	ISSUED FOR CONSTRUCTION	GB	KB	KH	LWF					EM
1	06/03/12	ISSUED FOR CONSTRUCTION	GB	SJ	KH	LWF					EM MD
0	09/15/11	ISSUED FOR DESIGN									
G	07/11/11	ISSUED FOR PHA III									
F	04/20/11	ISSUED FOR ESTIMATE									
E	03/01/11	ISSUED FOR PHA II									
D	01/01/11	ISSUED FOR CLIENT REVIEW									



**PERMIT TO PRACTICE**  
**FLUOR CANADA LTD.**  
Signature: *[Signature]*  
Date: 20 June 2013  
**PERMIT NUMBER: P 0778**  
The Association of Professional Engineers, Geologists and Geophysicists of Alberta

**SHELL CANADA**  
QUEST CCS PROJECT

**FLUOR**

PIPING AND INSTRUMENT DIAGRAM  
QUEST CCS PROJECT  
UNIT 240 - HYDROGEN MANUFACTURING UNIT  
ABSORBER AREA RELIEF COLLECTION

SCALE: NONE  
SHELL DWG NO.: 240.0000.000.041.030  
REV. 2

240.030  
FILE:V:\11025\DRAWINGS\SHM\240040.030.ppt MODEL DATE:6/17/2013 4:42:34 PM BY:9662451

4

3

2

1

D

D

C

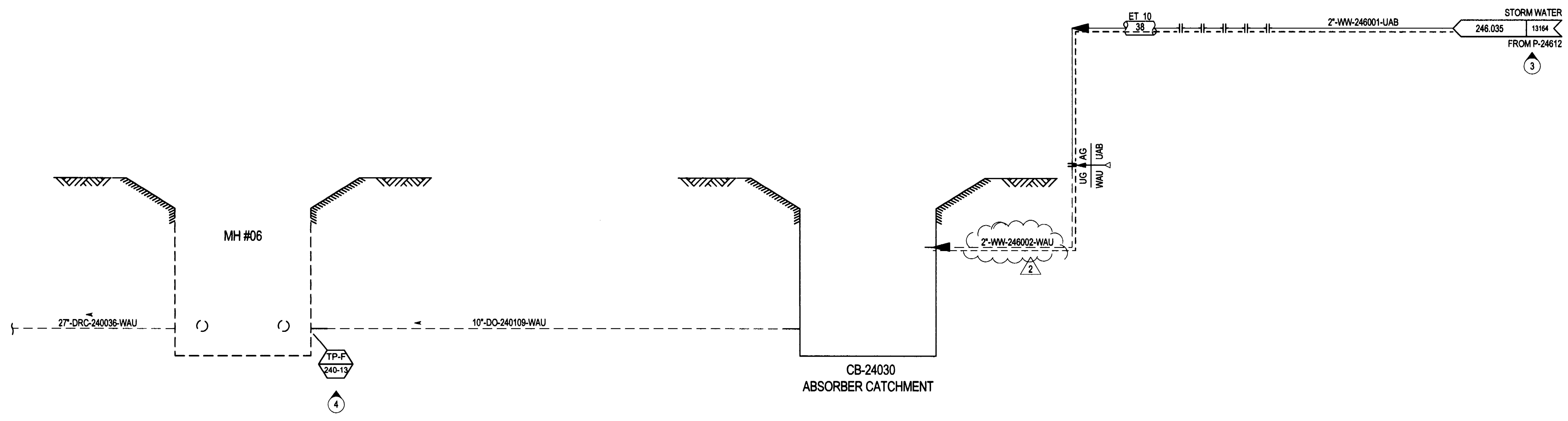
C

B

B

A

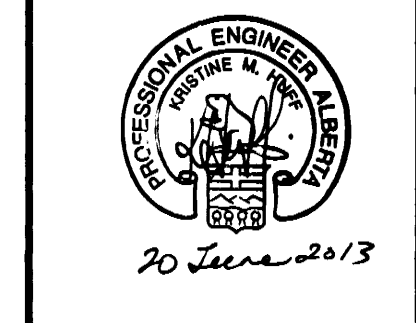
A



- NOTES:**
1. SEE DRAWINGS 200.0000.000.041.007 THRU 016 FOR SYMBOL IDENTIFICATION GENERAL NOTES & CONNECTION DETAILS.
  2. SEE 240.2315.000.050.011 FOR UNDERGROUND PIPING PLAN.
  3. STORM WATER FROM UNIT 246 "QUEST CAPTURE" TO BE ROUTED TO NEW CATCH BASIN IN HMU 1 & 2 ABSORBER AREA.
  4. NEW CATCH BASIN TO DRAIN TO TIE-IN AT MH #06. REFER TO 240.2315.000.053.001 FOR CATCH BASIN AND MANHOLE SCHEDULE.

**FLUOR**  
IFC – Issued for Construction  
Jul 30, 2013

REV	ISSUED DATE	DESCRIPTION	BY	CKD	PRS	CS	PDP	MC	APR	PEM	CLERK APP
2	06/18/13	ISSUED FOR CONSTRUCTION									
1A	06/03/12	RE-ISSUED FOR CONSTRUCTION	GB	KB	KH	LMF				EM	
1	06/24/12	ISSUED FOR CONSTRUCTION	GB	KB	KH	LMF				EM	RK
0	09/15/11	ISSUED FOR DESIGN	GB	SJ	KH	LMF				EM	MD



**PERMIT TO PRACTICE**  
**FLUOR CANADA LTD.**  
Signature: *[Signature]*  
Date: *20 June 2013*  
**PERMIT NUMBER: P 0778**  
The Association of Professional Engineers, Geologists and Geophysicists of Alberta

**SHELL CANADA**  
QUEST CCS PROJECT

**FLUOR**

PIPING AND INSTRUMENT DIAGRAM  
QUEST CCS PROJECT  
UNIT 240 - HYDROGEN MANUFACTURING UNIT  
STORM WATER DRAINAGE & POTENTIALLY OILY SWS

SCALE: NONE  
SHELL DWG NO.: 240.0000.000.041.032  
REV. 2

240.032  
FILE:11028DRAWINGS\HMU\240\240.032.dwg MODEL DATE: 4/22/2013 2:44:43 PM BY: bmc2451