

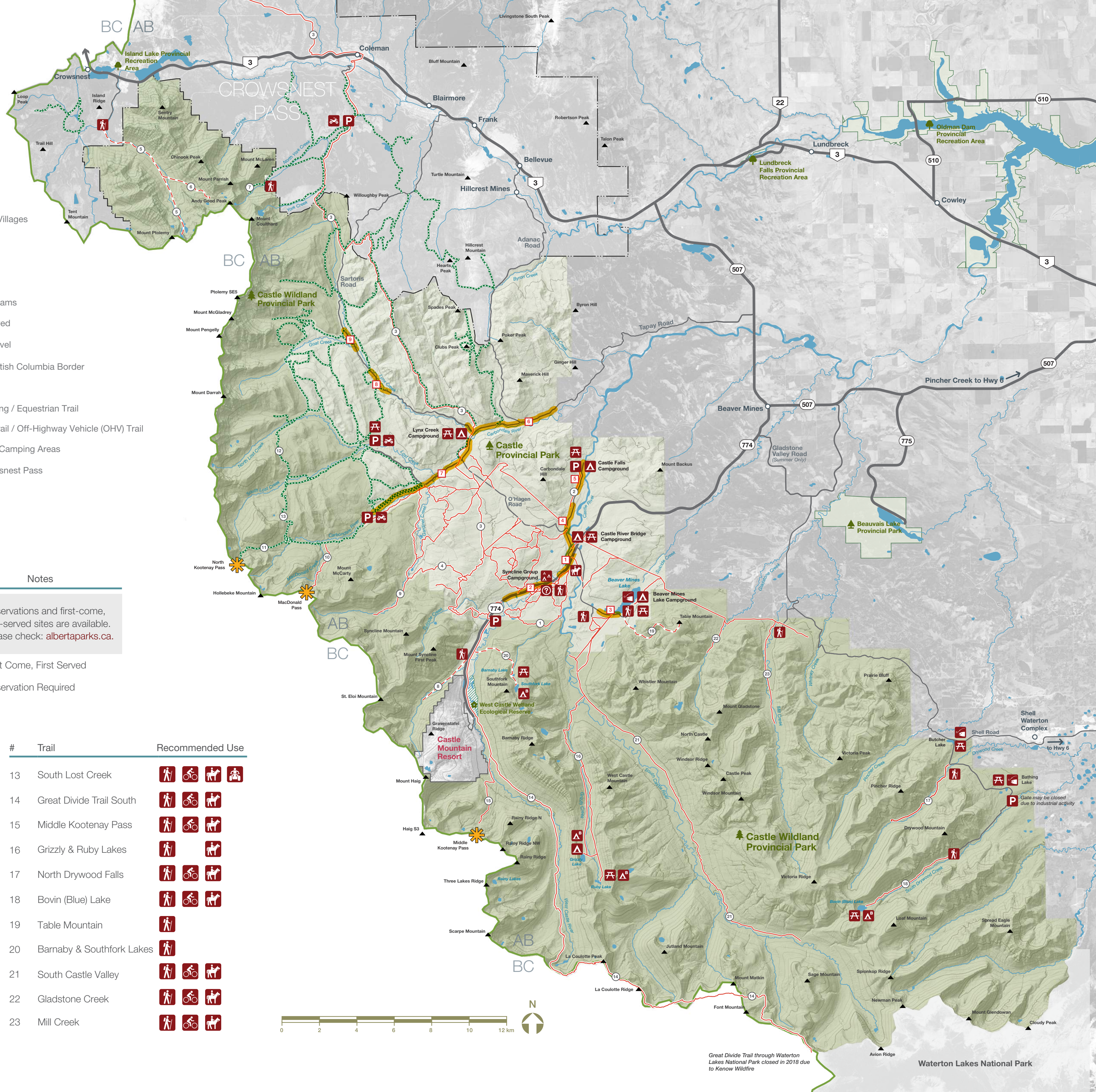
Castle Provincial Park & Wildland Provincial Park Designated Summer Trails 2018

Map Legend

- Castle Provincial Park
- Castle Wildland Provincial Park
- Other Provincial Parks
- Ecological Reserve
- Campground
- Backcountry Campground
- A Group Use Campground
- A A Day Use Area
- A A A Equestrian
- A A A A Fishing
- P Staging / Parking
- A Trailhead
- A A A A A Off-Highway Vehicle (OHV) Staging
- A A A A A A Washrooms*
*Pit toilets available at most day use, camping and staging areas
- Towns and Villages
- Mountain
- Pass
- Lakes
- Rivers / Streams
- Roads - Paved
- Roads - Gravel
- Alberta - British Columbia Border
- Hiking Trail
- Hiking / Biking / Equestrian Trail
- Multi-Use Trail / Off-Highway Vehicle (OHV) Trail
- Designated Camping Areas
- MD of Crowsnest Pass

Campground	# of Sites	Services	Notes
Beaver Mines Lake	86	Basic	Reservations and first-come, first-served sites are available. Please check: albertaparks.ca .
Castle Falls	47	Basic	
Castle River Bridge	30	Basic	
Lynx Creek	28	Basic	First Come, First Served
Syncline Group	20	Basic	Reservation Required

#	Trail	Recommended Use	#	Trail	Recommended Use
1	Syncline Trail Network		13	South Lost Creek	
2	Castle Falls Grassland		14	Great Divide Trail South	
3	Great Divide Trail North		15	Middle Kootenay Pass	
4	Gardiner Creek / Great Divide Connector		16	Grizzly & Ruby Lakes	
5	Mount Ptolemy		17	North Drywood Falls	
6	Andy Good Base		18	Bovin (Blue) Lake	
7	North York Creek / Plane Crash		19	Table Mountain	
8	Syncline Brook		20	Barnaby & Southfork Lakes	
9	Gardiner Creek		21	South Castle Valley	
10	MacDonald Pass		22	Gladstone Creek	
11	North Kootenay Pass		23	Mill Creek	
12	North Lost Creek				



Great Divide Trail through Waterton Lakes National Park closed in 2018 due to Kenow Wildfire

Waterton Lakes National Park