



HOMEOWNER'S ASSESSMENT

FireSmart Begins at Home

Alberta Government



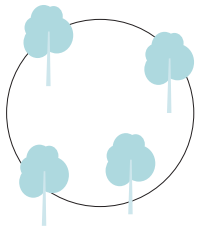
Assess Your Risk from Wildfire

Answer the questions below to see what changes will make the greatest difference in reducing your home's risk from wildfire.

HOME / 10 metres		ZONE 1	
What type of roofing material do you have?	Metal, clay tile, asphalt shingle or ULC-rated shakes (may be affected by the condition of your roof)	0	
	Unrated wood shakes	30	
How clean is your roof?	No needles, leaves or other combustible materials	0	
	A scattering of needles and leaves	2	
	Clogged gutters and extensive leaves	3	
What is the exterior of your home built of?	Non-combustible material stucco, metal siding or brick	0	
	Logs or heavy timbers	1	
	Wood, vinyl siding or wood shakes	6	
How fire resistant are your windows and doors?	Tempered glass in all doors/windows	0	
	Double-pane glass - Small/medium (<1 metre x 1 metre)	1	
	Double-pane glass - Large (>1 metre x 1 metre)	2	
	Single-pane glass - Small/medium (<1 metre x 1 metre)	2	
	Single-pane glass - Large (>1 metre x 1 metre)	4	
Are your eaves closed up and vents screened?	Closed eaves, vents screened with 3 millimetre wire mesh	0	
	Closed eaves, vents without mesh	1	
	Open eaves, vents not screened	6	

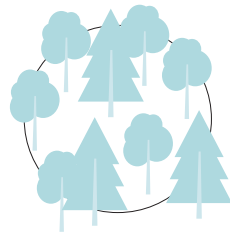
HOME / 10 metres		ZONE 1	
Have you sheathed-in the underside of your balcony, deck, porch or open foundation?	Sheathed with fire-resistant materials	0	
	Sheathed with combustible materials	2	
	Not sheathed	6	
Is your home set back from the edge of a slope?	Building is located on the bottom or lower portion of a hill	0	
	Building is located on the mid to upper portion or crest of a hill	6	
HOME SCORE			
YARD / Within 10 metres of home		ZONE 1	
Where are your outbuildings located?	More than 10 metres from home	0	
	Less than 10 metres from home	6	
Where is your woodpile located?	More than 10 metres away from any building	0	
	Less than 10 metres away from any building	6	
What type of forest grows within 10 metres of your home?	TREES		
	Deciduous (i.e. poplar, birch)	0	
	Mixed wood (both conifer and deciduous)	30	
	Conifer (i.e. spruce, pine, fir, cedar)	30	
What kind of surface vegetation and combustible materials are within 10 metres of your home and outbuildings?	Well-drained lawn or non-combustible landscaping material	0	
	Uncut grass or shrubs	30	
	Twigs, branches and tree needles on the ground	30	
YARD (within 10 metres of home) SCORE			

What type of forest surrounds your home? What kind of surface vegetation grows within 10 - 30 metres of your home? What kind of surface vegetation grows in the zones around your buildings? Are there shrubs and low branches (within 2 metres of the ground) in the surrounding forest?	TREES	
	Deciduous (i.e. poplar, birch, cottonwood)	0
	Mixed wood (both conifer and deciduous)	10
	CONIFER (i.e. spruce, pine, fir, cedar) <i>See below illustration*</i>	
	Separated	10
	Continuous	30
	TWIGS, BRANCHES AND NEEDLES ON THE GROUND	
	Scattered	5
	Abundant	30
	Uncut grass or shrubs	5
None within 10 metres - 30 metres	0	
	Scattered within 10 metres - 30 metres of buildings	5
	Abundant within 10 metres - 30 metres of buildings	10
YARD (10 metres - 30 metres) SCORE		



SEPARATED

Trees are widely spaced and crowns do not touch or overlap



CONTINUOUS

High stand density where trees are tightly spaced and crowns frequently touch or overlap

Home and Yard Hazard Score

SITE		TOTAL SCORE
Zone 1 / Home and Yard	Home	
	10 metres from the home	
Zone 2 / Yard	10 metres - 30 metres from the home	

HAZARD: Low: <21 Moderate: 21-29 High: 30-35 Extreme: >35

HOME CONSIDERATIONS

- Have you discussed wildfire damage and loss with your insurance provider?
- Is your roof in poor condition? A roof in poor condition will not provide protection from sparks and embers. Fire resistance deteriorates over time; check manufacturer guidelines to assess roof condition and potential fire resistance.
- Is your chimney clean? Does it have proper clearances, screens and spark arrestors?

YARD CONSIDERATIONS

- Is the area within 10 metres of buildings free of flammable trees, other vegetation and combustible materials?
- Are large capacity propane tanks within 10 metres of buildings? Are they clear of vegetation?
- Is fire suppression equipment readily available? Shovels, rakes, buckets and hoses should be easily accessible.
- Are burn barrels screened and at least 10 metres from combustible materials and buildings?
- Are overhead power lines clear of vegetation? Contact your service provider for assistance with removing trees in close proximity to utility lines.

Family Evacuation Plan

Fill out this form and keep it near your home phone or someplace where everyone in your house can easily find it. Keep a copy in your emergency kit, and rehearse your evacuation plan at least once a year.

EMERGENCY: 911
REPORT A WILDFIRE: 310-FIRE

For up-to-date information on active wildfires, please download the Alberta Wildfire App (Apple/Android) on your smartphone or call **1-866-FYI-FIRE**.

For more information on how to prepare for a wildfire and other emergencies, go to: getprepared.gc.ca

OUR OUT-OF-TOWN EMERGENCY CONTACT IS:

Name	
Relationship	
Home Phone	
Cell Phone	
Address	
Email	

OUR EVACUATION ROUTES ARE (SKETCH ROUTES BELOW):

