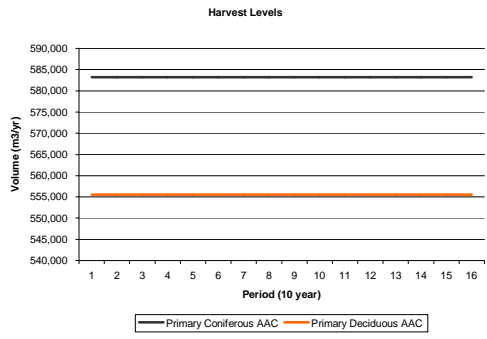


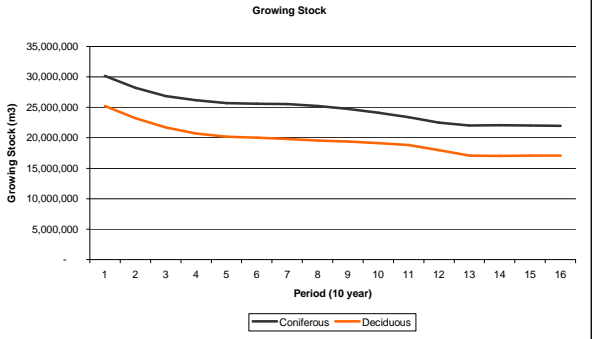
**APPENDIX 5 TIMBER SUPPLY ANALYSIS - WOODSTOCK**

Scenario	S20_v10	Status Quo	Duplicate 2002 TSA - One Land Base - Even Flow Total Growing Stock for last 4 Periods			
Number of Periods	16		Minimum Coniferous Harvest Age	70 years	Run Date	2-Apr-09
Period Length	10 Years		Minimum Coniferous Harvest Age	50 years		
Landbase Version	1					
Yields	S20_v1.yld					
Number of Themes	7					
Regen Lag	- Years		Comments: Min Coniferous/ Deciduous Harvest Ages = 70/50			

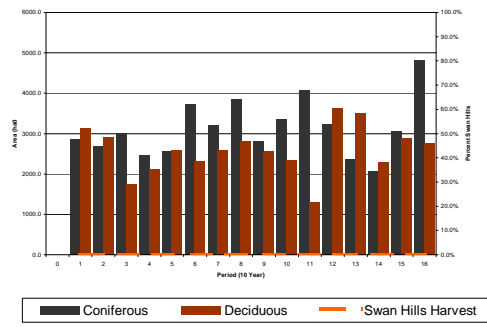
Period	Harvest Levels (m3/year)			
	Primary Coniferous AAC	Secondary Coniferous AAC	Primary Deciduous AAC	Secondary Deciduous AAC
0	-	-	-	-
1	583,241	-	555,537	-
2	583,241	-	555,537	-
3	583,241	-	555,537	-
4	583,241	-	555,537	-
5	583,241	-	555,537	-
6	583,241	-	555,537	-
7	583,241	-	555,537	-
8	583,241	-	555,537	-
9	583,241	-	555,537	-
10	583,241	-	555,537	-
11	583,241	-	555,537	-
12	583,241	-	555,537	-
13	583,241	-	555,537	-
14	583,241	-	555,537	-
15	583,241	-	555,537	-
16	583,241	-	555,537	-



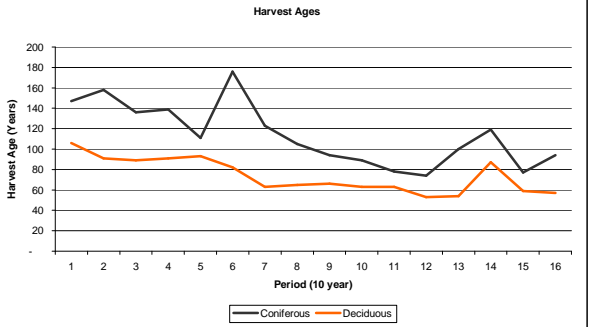
Period	Growing Stock	
	Coniferous	Deciduous
0	32,730,500	27,437,064
1	30,179,966	25,246,914
2	28,196,882	23,253,492
3	26,874,478	21,729,366
4	26,151,501	20,685,021
5	25,685,163	20,171,517
6	25,603,573	20,032,853
7	25,252,161	19,807,140
8	25,209,228	19,565,255
9	24,768,406	19,370,100
10	24,119,265	19,113,502
11	23,408,421	18,789,726
12	22,512,913	17,998,467
13	22,004,017	17,081,291
14	22,057,465	17,027,844
15	22,021,020	17,064,288
16	21,991,860	17,093,449



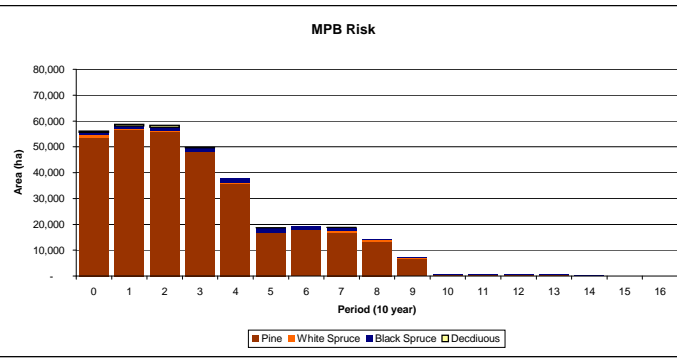
Period	Harvest Areas (ha)		Swan Hills Harvest Area	Percent of Total
	Coniferous	Deciduous		
0	0.0	0.0		
1	2841.6	3131.1		0.0%
2	2685.9	2911.7		0.0%
3	3000.4	1736.5		0.0%
4	2456.1	2107.9		0.0%
5	2556.7	2574.2		0.0%
6	3716.8	2306.6		0.0%
7	3193.3	2594.3		0.0%
8	3852.6	2795.7		0.0%
9	2809.3	2571.7		0.0%
10	3364.6	2337.1		0.0%
11	4055.6	1285.2		0.0%
12	3216.2	3625.7		0.0%
13	2364.8	3495.8		0.0%
14	2070.8	2291.0		0.0%
15	3057.0	2886.5		0.0%
16	4822.3	2751.4		0.0%



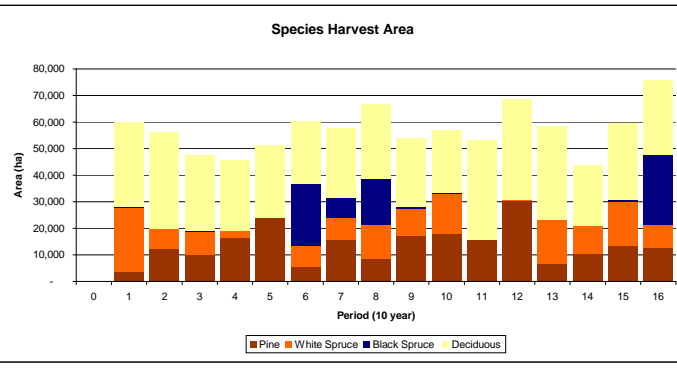
Period	Harvest Ages	
	Coniferous	Deciduous
0	-	-
1	147	106
2	158	91
3	136	89
4	139	91
5	111	93
6	176	82
7	123	63
8	105	65
9	94	66
10	89	63
11	78	63
12	74	53
13	100	54
14	119	87
15	77	59
16	94	57



MPB Risk Area Inventory					
Period	Pine	White Spruce	Black Spruce	Deciduous	Total
0	53,518	975	964	658	56,116
1	56,564	457	976	678	58,675
2	55,785	355	1,304	868	58,311
3	48,111	54	1,348	295	49,809
4	35,965	133	1,527	84	37,708
5	16,737	216	1,654	101	18,708
6	17,972	65	1,407	55	19,499
7	16,911	569	1,263	50	18,793
8	13,522	530	145	50	14,246
9	6,752	203	116	50	7,121
10	568	-	116	50	734
11	568	-	116	-	684
12	568	-	116	-	684
13	568	-	116	-	684
14	-	-	116	-	116
15	-	-	-	-	-
16	-	-	-	-	-

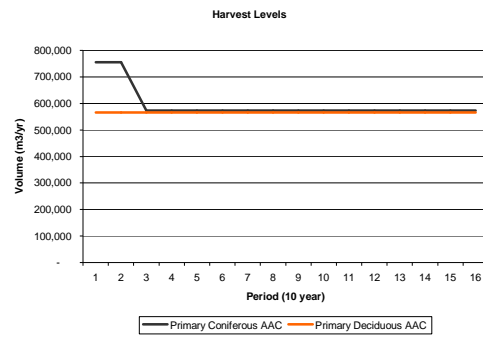


Harvest Areas by Species					
Period	Pine	White Spruce	Black Spruce	Deciduous	Total
0	-	-	-	-	-
1	3,517	24,148	378	31,684	59,727
2	12,115	7,536	29	36,294	55,975
3	10,139	8,738	162	28,329	47,368
4	16,205	2,921	-	26,513	45,640
5	23,912	235	-	27,163	51,309
6	5,653	7,773	23,331	23,476	60,234
7	15,623	8,278	7,840	26,135	57,876
8	8,530	12,737	17,260	27,957	66,484
9	17,073	10,512	507	25,717	53,810
10	17,786	15,138	422	23,671	57,017
11	15,640	122	6	37,640	53,408
12	30,508	235	-	37,677	68,419
13	6,609	16,773	-	35,224	58,606
14	10,258	10,450	-	22,910	43,618
15	13,550	16,454	566	28,865	59,436
16	12,897	8,269	26,722	27,850	75,737

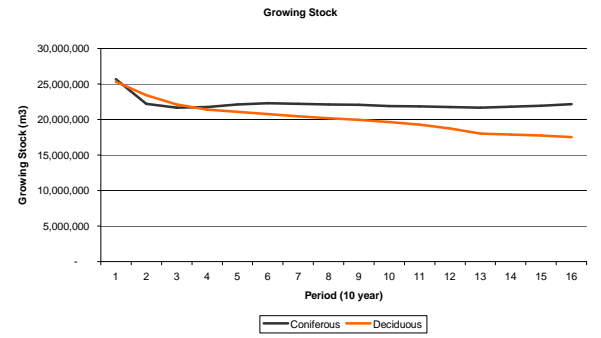


Scenario	S20_v5	Pine Prevention Strategy	Pine Prevention Strategy - 20 Year Surge		Run Date	2-Apr-09
Number of Periods	16	Minimum Coniferous Harvest Age	70 years			
Period Length	10 Years	Minimum Coniferous Harvest Age	50 years			
Landbase Version	2					
Yields	S20_v3.yld					
Number of Themes	6					
Regen Lag	- Years	Comments: Reduce Susceptible Stand area by 75% in first 20 Years				

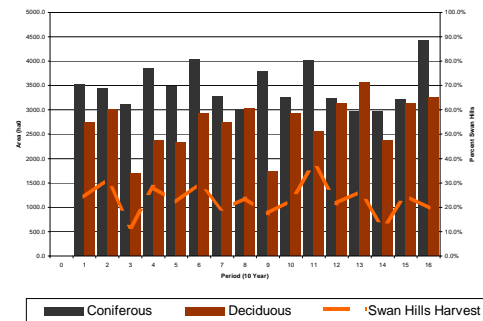
Period	Harvest Levels (m3/year)			
	Primary Coniferous AAC	Secondary Coniferous AAC	Primary Deciduous AAC	Secondary Deciduous AAC
0	-	-	-	-
1	755,171	-	566,149	-
2	755,171	-	566,149	-
3	573,080	-	566,149	-
4	573,080	-	566,149	-
5	573,080	-	566,149	-
6	573,080	-	566,149	-
7	573,080	-	566,149	-
8	573,080	-	566,149	-
9	573,080	-	566,149	-
10	573,080	-	566,149	-
11	573,080	-	566,149	-
12	573,080	-	566,149	-
13	573,080	-	566,149	-
14	573,080	-	566,149	-
15	573,080	-	566,149	-
16	573,080	-	566,149	-



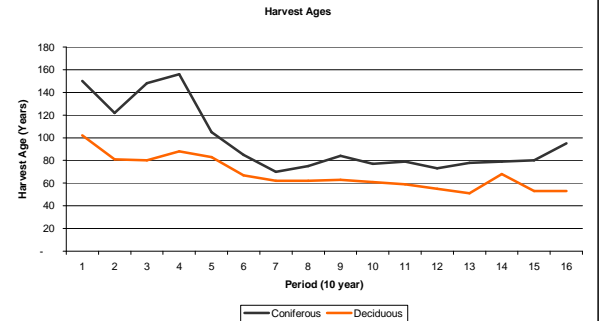
Period	Growing Stock	
	Coniferous	Deciduous
0	29,665,178	27,392,846
1	25,663,883	25,315,913
2	22,209,637	23,442,904
3	21,646,868	22,131,468
4	21,765,378	21,404,963
5	22,124,586	21,090,444
6	22,289,731	20,775,413
7	22,227,592	20,442,407
8	22,097,870	20,164,178
9	22,062,425	19,953,139
10	21,912,068	19,650,595
11	21,856,255	19,284,658
12	21,748,327	18,729,723
13	21,684,869	18,008,501
14	21,800,114	17,893,256
15	21,941,960	17,751,410
16	22,175,890	17,517,479



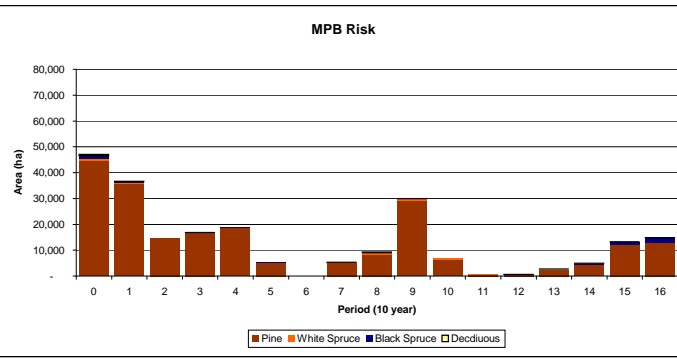
Period	Harvest Areas (ha)		Swan Hills Harvest Area	Percent of Total
	Coniferous	Deciduous		
0	0.0	0.0	-	-
1	3529.4	2749.0	1,528	24.3%
2	3436.1	3019.5	2,048	31.7%
3	3114.9	1708.5	574	11.9%
4	3858.1	2372.4	1,762	28.3%
5	3481.4	2347.2	1,294	22.2%
6	4032.5	2926.9	2,080	29.9%
7	3286.8	2742.9	1,145	19.0%
8	3015.2	3040.5	1,438	23.7%
9	3787.0	1734.5	965	17.5%
10	3249.0	2938.9	1,422	23.0%
11	4024.4	2565.2	2,497	37.9%
12	3241.6	3130.2	1,380	21.7%
13	2984.6	3563.1	1,726	26.4%
14	2968.0	2387.1	623	11.6%
15	3218.6	3146.6	1,579	24.8%
16	4427.5	3255.6	1,513	19.7%



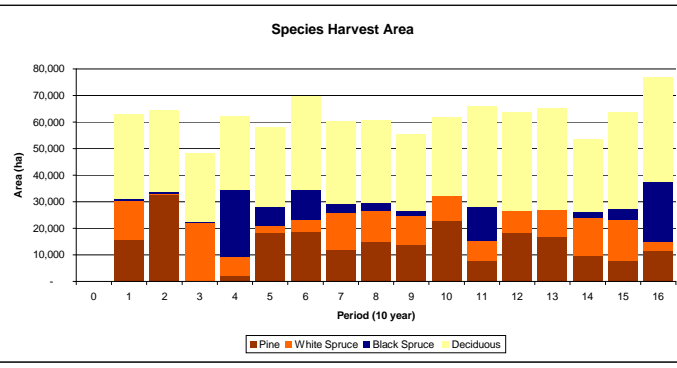
Period	Harvest Ages	
	Coniferous	Deciduous
0	-	-
1	150	102
2	122	81
3	148	80
4	156	88
5	105	83
6	85	67
7	70	62
8	75	62
9	84	63
10	77	61
11	79	59
12	73	55
13	78	51
14	79	68
15	80	53
16	95	53



MPB Risk Area Inventory					
Period	Pine	White Spruce	Black Spruce	Deciduous	Total
0	44,694	908	896	589	47,086
1	35,824	202	429	186	36,640
2	14,578	-	-	-	14,578
3	16,708	2	7	92	16,809
4	18,819	11	180	115	19,125
5	5,094	-	306	58	5,458
6	-	-	-	-	-
7	5,075	25	110	128	5,338
8	8,406	451	4	485	9,346
9	29,194	696	-	21	29,910
10	6,389	696	-	21	7,105
11	425	280	-	21	726
12	425	131	-	21	577
13	2,193	58	367	62	2,680
14	4,470	9	405	73	4,956
15	12,120	15	960	98	13,194
16	13,076	9	1,651	143	14,878

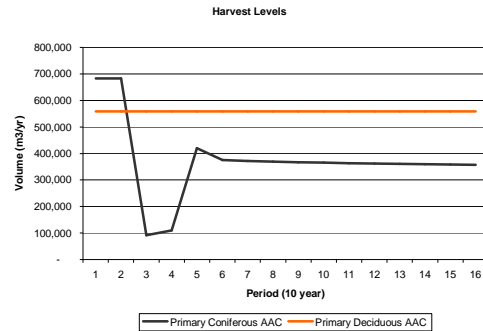


Harvest Areas by Species					
Period	Pine	White Spruce	Black Spruce	Deciduous	Total
0	-	-	-	-	-
1	15,434	15,045	597	31,709	62,784
2	32,774	275	775	30,732	64,556
3	24	22,108	197	25,906	48,234
4	1,908	7,523	25,025	27,848	62,304
5	18,401	2,275	7,508	30,103	58,287
6	18,628	4,707	11,018	35,240	69,594
7	12,063	13,675	3,259	31,299	60,296
8	15,071	11,477	3,103	30,907	60,557
9	13,847	11,068	1,566	28,733	55,214
10	22,828	9,234	175	29,641	61,879
11	7,917	7,609	12,600	37,769	65,895
12	18,524	8,035	190	36,969	63,718
13	16,691	10,360	-	38,426	65,477
14	9,619	14,290	2,382	27,259	53,551
15	7,587	15,449	4,027	36,589	63,652
16	11,307	3,702	22,525	39,297	76,831

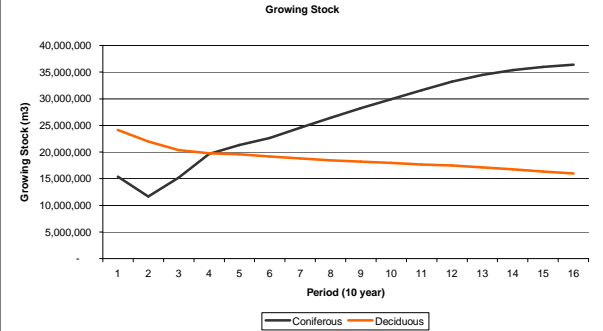


Scenario	S20_v8	Disaster Scenario	Disaster Scenario	
Number of Periods	16	Minimum Coniferous Harvest Age	70 years	Run Date 3-Apr-09
Period Length	10 Years	Minimum Coniferous Harvest Age	50 years	
Landbase Version	2			
Yields	S20_v5.yld			
Number of Themes	5			
Regen Lag	- Years	Comments: Disaster Scenario Landbase - Updated 2002 Land base for harvest, fires and deletions - Net Land base		

Period	Harvest Levels (m3/year)			
	Primary Coniferous AAC	Secondary Coniferous AAC	Primary Deciduous AAC	Secondary Deciduous AAC
0	-	-	-	-
1	682,899	-	558,598	-
2	682,899	-	558,598	-
3	91,979	-	558,598	-
4	109,496	-	558,598	-
5	419,512	-	558,598	-
6	374,865	-	558,598	-
7	371,914	-	558,598	-
8	369,401	-	558,598	-
9	367,215	-	558,598	-
10	365,282	-	558,598	-
11	363,551	-	558,598	-
12	361,984	-	558,598	-
13	360,553	-	558,598	-
14	359,237	-	558,598	-
15	358,019	-	558,598	-
16	356,887	-	558,598	-

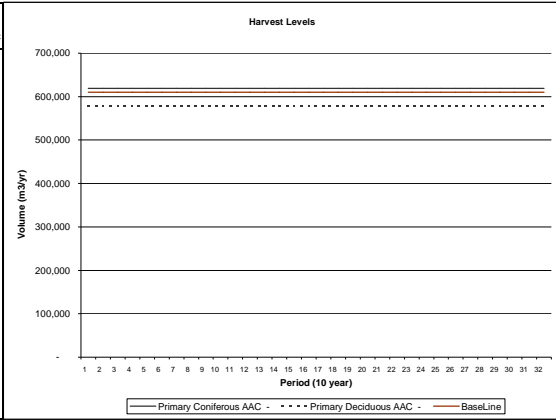


Period	Growing Stock	
	Coniferous	Deciduous
0	29,664,875	27,392,965
1	15,357,004	24,151,252
2	11,657,827	21,960,507
3	15,209,573	20,362,642
4	19,614,222	19,749,812
5	21,313,876	19,556,208
6	22,639,428	19,161,165
7	24,557,592	18,805,909
8	26,399,091	18,467,142
9	28,240,156	18,202,025
10	29,919,210	17,934,266
11	31,595,790	17,661,739
12	33,211,679	17,469,690
13	34,493,452	17,140,714
14	35,392,994	16,750,708
15	35,989,369	16,331,537
16	36,367,529	15,980,086

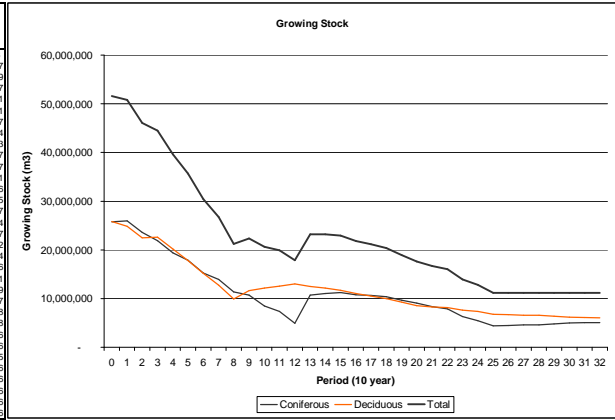


Scenario	S20_v22	PFMS - Base Run	Preferred Forest Management Scenario - Set Baseline AAC		
Number of Periods	32		Minimum Coniferous Harvest Age	70 years	Run Date 2-Apr-09
Period Length	5 Years		Minimum Coniferous Harvest Age	50 years	
Landbase Version	2		Constraints:		
Yields	S20_v6.yld				
Number of Themes	8				
Regen Lag	- Years		Comments: Even flow Coniferous/Deciduous Harvest, No Compartments Sequencing		

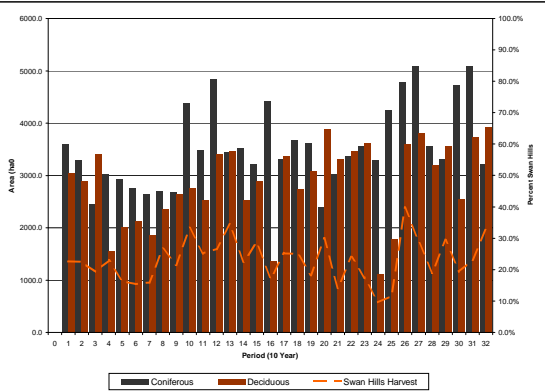
Period	Harvest Levels (m3/year)			
	Primary Coniferous AAC	Secondary Coniferous AAC	Primary Deciduous AAC	Secondary Deciduous AAC
0	-	-	-	-
1	619,229	-	577,925	-
2	619,229	-	577,925	-
3	619,229	-	577,925	-
4	619,229	-	577,925	-
5	619,229	-	577,925	-
6	619,229	-	577,925	-
7	619,229	-	577,925	-
8	619,229	-	577,925	-
9	619,229	-	577,925	-
10	619,229	-	577,925	-
11	619,229	-	577,925	-
12	619,229	-	577,925	-
13	619,229	-	577,925	-
14	619,229	-	577,925	-
15	619,229	-	577,925	-
16	619,229	-	577,925	-
17	619,229	-	577,925	-
18	619,229	-	577,925	-
19	619,229	-	577,925	-
20	619,229	-	577,925	-
21	619,229	-	577,925	-
22	619,229	-	577,925	-
23	619,229	-	577,925	-
24	619,229	-	577,925	-
25	619,229	-	577,925	-
26	619,229	-	577,925	-
27	619,229	-	577,925	-
28	619,229	-	577,925	-
29	619,229	-	577,925	-
30	619,229	-	577,925	-
31	619,229	-	577,925	-
32	619,229	-	577,925	-



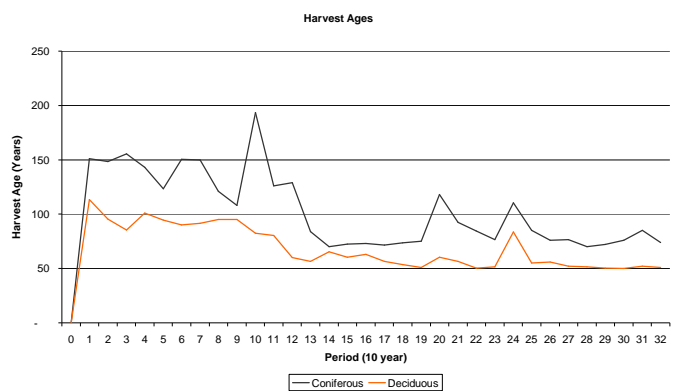
Period	Growing Stock		
	Coniferous	Deciduous	Total
0	25,749,359	25,842,826	51,592,186
1	25,987,150	24,811,767	50,798,917
2	23,587,531	22,449,493	46,037,023.9
3	21,899,084	22,574,849	44,473,932.7
4	19,417,740	20,203,188	39,620,928.5
5	17,875,046	17,825,990	35,701,036.1
6	15,268,532	15,184,682	30,453,213.7
7	13,958,653	12,774,697	26,733,349.4
8	11,340,018	9,894,469	21,234,487.3
9	10,697,534	11,642,325	22,339,858.7
10	8,500,411	12,160,556	20,660,967
11	7,392,047	12,545,733	19,937,779.1
12	4,897,148	12,998,236	17,895,384.6
13	10,729,320	12,482,723	23,212,042.5
14	11,070,927	12,155,565	23,226,491.7
15	11,239,082	11,867,626	22,906,707.4
16	10,785,938	11,038,293	21,824,230.7
17	10,654,871	10,538,964	21,193,835.2
18	10,376,181	9,974,713	20,350,894.4
19	9,674,114	9,280,863	18,954,977.6
20	9,044,224	8,565,609	17,609,833.1
21	8,374,732	8,303,273	16,678,004.9
22	7,875,248	8,142,282	16,017,529.7
23	6,333,987	7,810,790	13,944,778.8
24	5,425,463	7,358,915	12,784,377.8
25	4,410,077	6,745,230	11,155,306.6
26	4,463,555	6,691,751	11,155,306.6
27	4,614,397	6,540,910	11,155,306.6
28	4,613,591	6,541,715	11,155,306.6
29	4,778,979	6,376,327	11,155,306.6
30	4,983,766	6,171,541	11,155,306.6
31	5,068,101	6,087,206	11,155,306.6
32	5,082,196	6,073,110	11,155,306.6



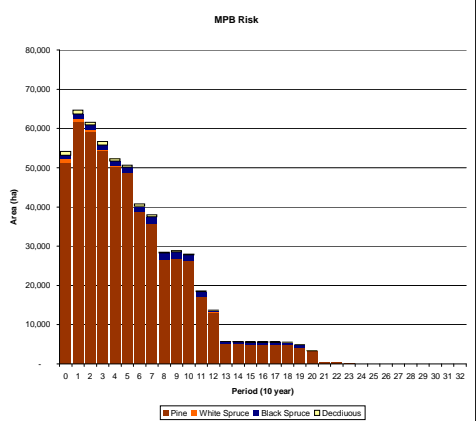
Period	Harvest Areas (ha)		Swan Hills Harvest	
	Coniferous	Deciduous	Area	Percent of Total
0	0.0	0.0	-	-
1	3589.5	3044.6	1,504	22.7%
2	3282.1	2880.9	1,390	22.8%
3	2452.2	3397.6	1,133	19.4%
4	3020.2	1557.6	1,049	22.9%
5	3923.4	2014.6	806	16.3%
6	2757.1	2127.9	752	15.4%
7	2639.5	1867.7	715	15.9%
8	2890.0	2355.7	1,343	26.6%
9	2876.2	2641.6	1,142	21.5%
10	4388.2	2760.0	2,375	33.2%
11	3485.2	2533.0	1,518	25.2%
12	4840.0	3413.6	2,192	26.6%
13	3440.5	3454.1	2,377	34.5%
14	3516.7	2520.1	1,360	22.5%
15	3225.1	2899.5	1,750	28.6%
16	4411.0	1361.8	896	17.1%
17	3313.2	3374.4	1,684	25.2%
18	3672.4	2733.7	1,608	25.1%
19	3812.1	3090.7	1,225	18.3%
20	2397.5	3889.3	1,886	30.0%
21	3012.7	3304.1	891	14.1%
22	3370.4	3463.9	1,634	23.9%
23	3562.5	3611.8	1,243	17.3%
24	3288.2	1122.1	424	9.6%
25	4236.5	699	699	11.6%
26	4778.4	3590.0	3,323	39.7%
27	5093.0	3814.1	2,590	29.1%
28	3563.0	3195.9	1,283	19.0%
29	3300.0	3550.5	2,016	29.4%
30	4714.9	2539.3	1,402	19.3%
31	5094.4	3723.0	2,035	23.1%
32	3223.7	3914.9	2,345	32.8%



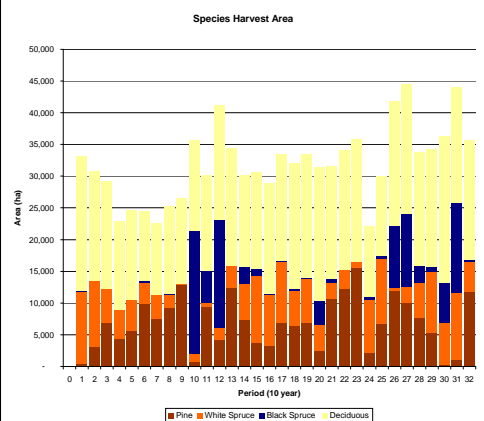
Period	Harvest Ages	
	Coniferous	Deciduous
0	-	-
1	151	114
2	149	96
3	156	86
4	143	101
5	124	95
6	151	90
7	150	92
8	121	95
9	108	96
10	194	83
11	126	81
12	129	68
13	84	57
14	73	66
15	61	73
16	73	63
17	72	57
18	74	54
19	76	51
20	118	61
21	93	57
22	85	51
23	77	52
24	111	84
25	85	85
26	76	56
27	77	52
28	70	52
29	72	51
30	76	50
31	85	52
32	74	51



Period	MPB Risk Area Inventory				Total
	Pine	White Spruce	Black Spruce	Deciduous	
0	51,261	908	907	1,105	54,180
1	61,730	688	1,216	1,026	64,660
2	59,202	410	1,253	709	61,575
3	54,289	165	1,260	935	56,560
4	50,284	90	1,260	630	52,264
5	48,599	9	1,433	630	50,670
6	38,703	9	1,433	667	40,811
7	36,868	9	1,559	550	37,985
8	26,616	9	1,559	303	28,487
9	26,827	41	1,620	376	28,863
10	26,374	41	1,284	244	27,944
11	17,200	41	1,123	209	18,574
12	13,076	41	462	143	13,723
13	5,050	7	541	143	5,741
14	5,021	7	541	143	5,712
15	4,925	7	541	143	5,616
16	4,923	7	541	133	5,604
17	4,923	7	541	133	5,604
18	4,866	7	541	133	5,567
19	4,251	7	541	133	4,932
20	3,235	7	59	48	3,349
21	420	7	0	3	431
22	371	7	0	3	382
23	168	7	0	3	178
24	-	-	-	-	-
25	-	-	-	-	-
26	-	-	-	-	-
27	-	-	-	-	-
28	-	-	-	-	-
29	-	-	-	-	-
30	-	-	-	-	-
31	-	-	-	-	-
32	-	-	-	-	-

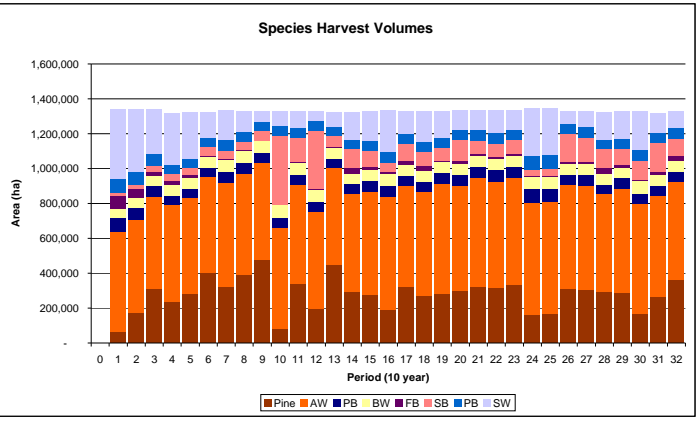


Period	Harvest Areas by Species				Total
	Pine	White Spruce	Black Spruce	Deciduous	
0	-	-	-	-	-
1	513	11,266	124	21,267	33,171
2	3,072	10,420	73	17,250	30,915
3	6,798	5,463	-	16,988	29,249
4	4,266	4,692	-	13,932	22,889
5	5,647	4,875	19	14,147	24,687
6	9,950	3,266	181	11,029	24,425
7	7,455	3,806	43	11,232	22,536
8	9,296	2,070	103	13,759	25,228
9	12,884	234	7	13,459	26,584
10	732	1,288	19,414	14,308	35,741
11	9,400	592	5,117	14,983	30,091
12	4,181	1,955	17,039	18,093	41,268
13	12,427	3,363	125	18,558	34,473
14	7,422	5,595	2,776	14,391	30,184
15	3,739	10,567	1,084	15,233	30,623
16	3,349	7,932	213	17,371	28,864
17	6,798	5,770	16	16,584	33,436
18	6,404	5,463	338	19,805	32,031
19	6,874	6,896	197	19,546	33,514
20	2,439	4,121	3,836	21,038	31,434
21	10,801	2,615	658	17,710	31,584
22	12,317	2,859	170	18,826	34,171
23	15,585	965	18	19,304	35,872
24	2,118	8,363	495	11,076	22,052
25	6,742	10,234	502	12,588	30,066
26	11,950	481	9,749	19,662	41,842
27	10,016	2,570	11,524	20,426	44,535
28	7,654	5,491	2,787	17,863	33,795
29	5,307	9,659	773	18,514	34,252
30	323	6,511	6,363	23,075	36,271
31	1,056	10,488	14,314	18,230	44,087
32	11,737	4,823	353	18,780	35,693



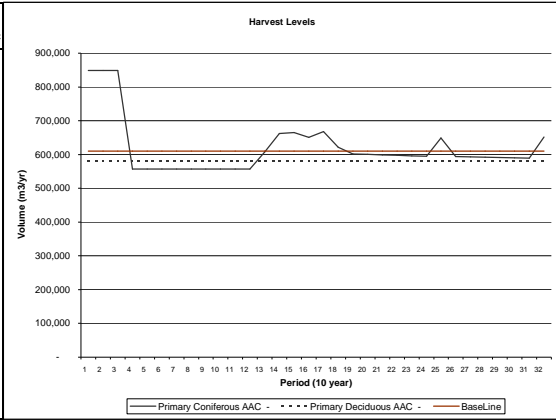


Period	Harvest Volumes by Species							Total
	Pine	SW	FB	SB	AW	PB	BW	
0	-	-	-	-	-	-	-	-
1	65,386	400,884	74,072	20,875	572,362	79,470	51,068	1,264,116
2	173,761	357,724	49,514	27,235	534,014	70,862	52,755	1,265,864
3	310,976	252,694	21,813	33,651	523,309	69,173	56,467	1,268,082
4	236,817	297,830	26,313	35,128	555,074	52,346	63,166	1,266,674
5	280,959	283,352	18,954	39,277	551,093	52,634	62,084	1,268,352
6	401,391	148,046	6,000	48,926	548,683	56,379	61,118	1,270,543
7	324,149	168,294	6,904	45,125	593,868	65,471	66,338	1,270,148
8	388,462	117,813	10,444	43,487	583,066	60,180	67,083	1,270,536
9	478,191	58,986	4,457	52,884	558,519	52,834	67,216	1,272,888
10	82,011	84,732	5,301	390,062	580,932	58,454	70,297	1,271,789
11	338,180	94,199	5,279	138,231	569,644	57,997	66,842	1,271,373
12	195,051	55,906	8,490	330,896	559,592	55,279	66,647	1,271,850
13	448,595	82,550	7,920	61,462	552,913	53,746	62,975	1,271,161
14	292,607	157,449	33,854	106,866	561,985	54,931	60,998	1,268,690
15	276,000	168,077	20,893	90,397	593,560	59,437	61,215	1,269,580
16	192,397	235,777	11,497	52,078	643,785	63,461	68,720	1,268,314
17	324,916	127,026	25,300	96,853	576,251	58,417	61,515	1,270,279
18	271,196	172,597	23,616	83,622	595,949	57,642	64,836	1,269,459
19	282,668	152,003	9,055	69,369	630,017	60,724	66,128	1,269,963
20	296,880	109,824	12,161	116,798	606,386	62,949	65,836	1,270,335
21	318,677	110,504	7,171	75,107	629,031	62,329	67,066	1,269,885
22	318,125	128,107	14,337	71,989	606,267	66,024	64,682	1,270,532
23	333,209	109,990	11,288	73,680	613,729	63,482	65,364	1,270,742
24	157,220	273,072	9,966	34,375	647,566	77,305	68,040	1,267,543
25	168,829	268,827	9,936	36,380	637,915	79,591	65,818	1,267,296
26	313,556	72,372	12,497	156,556	591,827	59,026	65,106	1,270,941
27	305,546	87,493	10,773	139,581	597,552	60,944	63,845	1,265,735
28	297,889	157,492	34,294	107,910	555,521	54,362	60,327	1,268,715
29	288,917	157,649	18,845	88,209	594,846	60,322	61,251	1,270,038
30	167,602	222,336	12,346	104,715	631,455	59,934	68,553	1,266,941
31	263,846	113,138	17,674	168,141	578,060	58,620	62,176	1,261,855
32	362,170	96,412	28,427	101,084	563,272	57,628	62,032	1,271,026

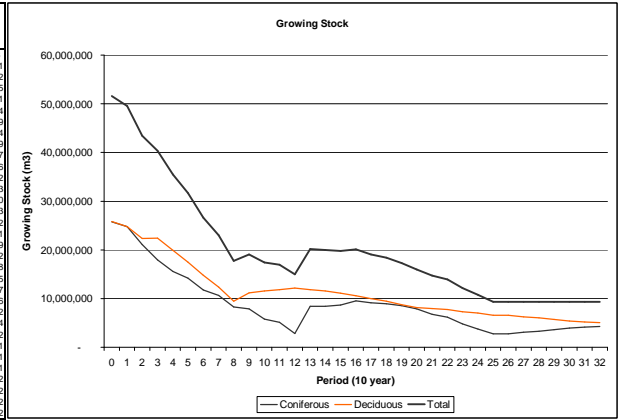


Scenario	S20_v25	PFMS	Preferred Forest Management Scenario
Number of Periods	32		Minimum Coniferous Harvest Age 70 years Minimum Coniferous Harvest Age 50 years
Period Length	5 Years		Run Date 3-Apr-09 619000
Landbase Version	2		557100 0.00
Yields	S20_v6.yld		Constraints:
Number of Themes	8		
Regen Lag	- Years		Comments: 15 year Surge, Reduce MPB Risk Area in Period 2 to 75% of S20_v22 period 4 area, Even flow Deciduous Harvest, Compartments Sequenced

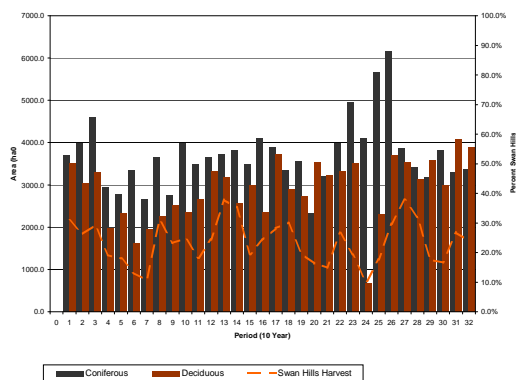
Period	Harvest Levels (m3/year)			
	Primary Coniferous AAC	Secondary Coniferous AAC	Primary Deciduous AAC	Secondary Deciduous AAC
0				
1	848,458	-	581,829	-
2	848,458	-	581,829	-
3	848,458	-	581,829	-
4	557,303	-	581,829	-
5	557,303	-	581,829	-
6	557,303	-	581,829	-
7	557,303	-	581,829	-
8	557,303	-	581,829	-
9	557,303	-	581,829	-
10	557,303	-	581,829	-
11	557,303	-	581,829	-
12	557,303	-	581,829	-
13	607,211	-	581,829	-
14	662,296	-	581,829	-
15	664,670	-	581,829	-
16	651,053	-	581,829	-
17	667,940	-	581,829	-
18	621,862	-	581,829	-
19	601,902	-	581,829	-
20	600,322	-	581,829	-
21	598,825	-	581,829	-
22	597,403	-	581,829	-
23	596,048	-	581,829	-
24	594,755	-	581,829	-
25	648,886	-	581,829	-
26	594,434	-	581,829	-
27	593,293	-	581,829	-
28	592,196	-	581,829	-
29	591,140	-	581,829	-
30	590,123	-	581,829	-
31	589,141	-	581,829	-
32	652,208	-	581,829	-



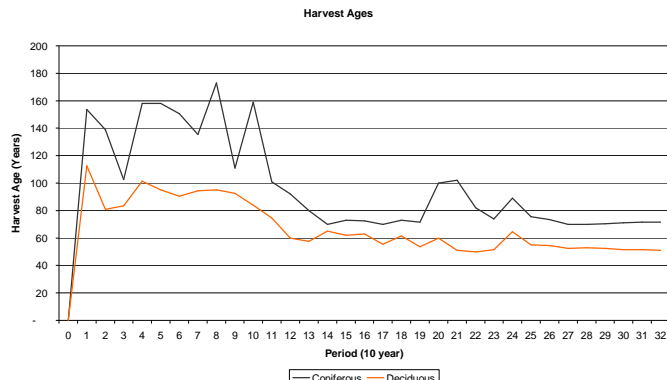
Period	Growing Stock		
	Coniferous	Deciduous	Total
0	25,749,359	25,842,826	51,592,186
1	24,755,324	24,791,546	49,546,870
2	21,096,666	22,347,052	43,443,718
3	17,943,517	22,379,026	40,322,543
4	15,564,672	19,920,597	35,485,269
5	14,198,212	17,478,815	31,677,027
6	11,792,327	14,797,532	26,589,859
7	10,647,989	12,367,027	23,015,016
8	9,288,346	9,477,033	18,765,379
9	7,877,634	11,202,722	19,080,357
10	5,810,969	11,573,374	17,384,343
11	5,156,947	11,813,085	16,970,032
12	2,838,991	12,130,164	14,969,153
13	8,397,332	11,805,658	20,202,990
14	8,432,162	11,560,131	19,992,293
15	8,662,378	11,113,486	19,775,864
16	9,506,656	10,579,426	20,086,082
17	9,123,748	9,966,136	19,089,883
18	8,952,910	9,434,443	18,387,353
19	8,559,841	8,726,770	17,286,611
20	7,857,727	8,133,998	15,991,725
21	6,789,490	7,945,136	14,734,626
22	6,163,266	7,747,126	13,910,392
23	4,820,919	7,305,706	12,126,625
24	3,725,031	7,030,072	10,755,103
25	2,769,245	6,571,936	9,341,181
26	2,763,499	6,577,682	9,341,181
27	3,107,666	6,233,515	9,341,181
28	3,314,724	6,029,457	9,341,181
29	3,598,812	5,742,369	9,341,181
30	3,974,649	5,366,532	9,341,181
31	4,148,827	5,192,355	9,341,181
32	4,251,075	5,090,106	9,341,181



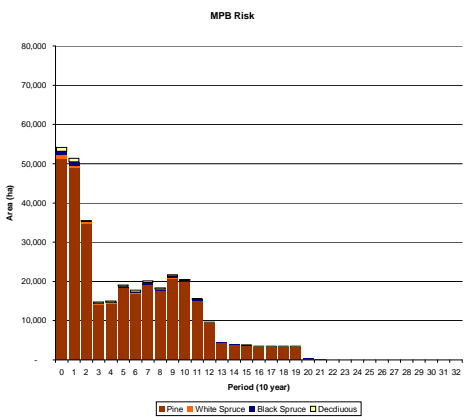
Period	Harvest Areas (ha)		Swan Hills Harvest	
	Coniferous	Deciduous	Area	Percent of Total
0	0.0	0.0	-	-
1	3681.7	3520.5	2,216	30.8%
2	3875.4	3030.4	1,843	26.3%
3	4598.0	3287.2	2,312	29.3%
4	2933.4	1957.6	938	19.2%
5	2788.3	2327.2	919	18.0%
6	3353.8	1611.7	647	13.0%
7	2654.4	1942.8	494	10.7%
8	3654.9	2260.9	1,832	31.0%
9	2760.8	2518.7	1,222	23.2%
10	3981.3	2341.5	1,561	24.7%
11	3473.3	2646.9	1,118	18.3%
12	3845.1	3314.8	1,680	24.3%
13	3717.7	3173.9	2,604	37.8%
14	3810.7	2571.5	2,246	35.2%
15	3488.8	2961.6	1,238	19.5%
16	4101.1	2355.0	1,574	24.4%
17	3889.8	3717.6	2,143	28.2%
18	3349.6	2890.0	1,878	30.1%
19	3552.8	2727.8	1,245	19.8%
20	2322.7	3530.8	958	16.4%
21	3199.7	3225.1	962	15.0%
22	3971.8	3314.8	1,936	26.8%
23	4950.3	3519.9	1,635	19.3%
24	4111.8	656.3	472	9.9%
25	5692.5	2290.1	1,405	17.7%
26	6141.3	3684.6	2,924	29.8%
27	3852.9	3532.2	2,790	37.8%
28	3404.7	3140.7	2,095	32.0%
29	3175.5	3573.8	1,181	17.5%
30	3810.3	2981.8	1,133	16.7%
31	3281.6	4062.2	1,973	26.9%
32	3359.5	3873.5	1,737	24.0%



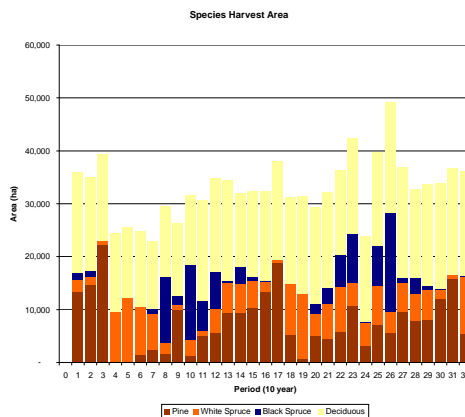
Period	Harvest Ages	
	Coniferous	Deciduous
0	-	-
1	154	113
2	139	81
3	103	84
4	158	102
5	158	95
6	151	91
7	136	95
8	173	95
9	111	93
10	159	84
11	101	75
12	92	60
13	80	58
14	73	62
15	72	54
16	73	63
17	70	56
18	73	62
19	72	54
20	100	60
21	102	51
22	82	50
23	74	52
24	89	65
25	76	55
26	74	55
27	70	53
28	70	53
29	71	53
30	71	52
31	72	52
32	72	51



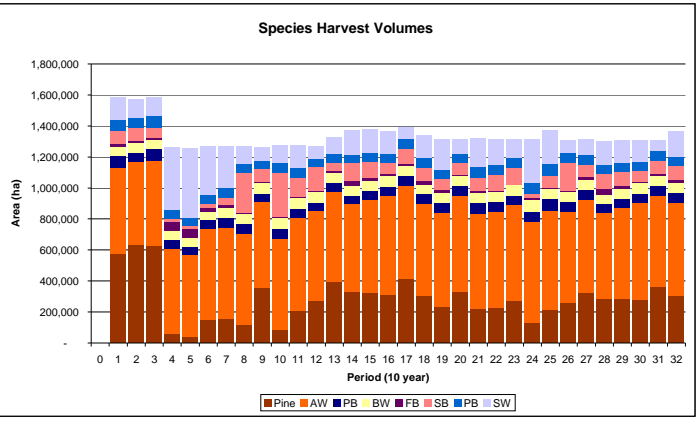
Period	MPB Risk Area Inventory				Total
	Pine	White Spruce	Black Spruce	Deciduous	
0	51,261	908	907	1,105	54,180
1	48,835	763	834	928	51,361
2	34,670	517	72	190	35,448
3	14,223	48	42	416	14,729
4	14,468	48	42	416	14,974
5	18,430	11	215	468	19,123
6	18,984	215	553	553	17,773
7	19,272	11	341	538	20,162
8	17,564	9	329	460	18,363
9	20,833	41	390	441	21,704
10	19,826	374	228	20,470	
11	15,042	-	367	193	15,602
12	9,509	-	61	58	9,627
13	4,399	7	139	58	4,602
14	3,751	7	120	58	3,936
15	3,627	7	120	58	3,812
16	3,302	7	120	48	3,476
17	3,302	7	120	48	3,476
18	3,302	7	120	48	3,476
19	3,302	7	120	48	3,476
20	423	7	34	3	468
21	91	-	-	2	93
22	-	-	-	-	-
23	-	-	-	-	-
24	-	-	-	-	-
25	-	-	-	-	-
26	-	-	-	-	-
27	-	-	-	-	-
28	-	-	-	-	-
29	-	-	-	-	-
30	-	-	-	-	-
31	-	-	-	-	-
32	-	-	-	-	-



Period	Harvest Areas by Species				Total
	Pine	White Spruce	Black Spruce	Deciduous	
0	-	-	-	-	-
1	13,409	2,205	1,427	18,970	36,011
2	14,709	1,566	1,111	17,643	35,029
3	22,332	642	54	16,404	39,431
4	-	9,669	23	14,763	24,455
5	-	12,291	-	13,287	25,578
6	1,482	8,904	207	14,235	24,828
7	2,366	6,797	1,012	12,811	22,986
8	1,752	1,909	12,526	13,393	29,579
9	9,854	1,096	1,781	13,616	26,347
10	1,285	2,925	14,357	13,046	31,614
11	4,979	1,100	5,502	19,020	30,601
12	5,641	4,449	7,014	17,697	34,800
13	9,511	5,660	250	19,037	34,458
14	9,334	5,534	3,069	13,973	31,911
15	10,255	5,100	830	16,157	32,342
16	13,426	1,799	142	16,913	32,280
17	18,623	625	-	18,588	36,037
18	5,314	9,560	-	16,324	31,198
19	729	12,302	-	18,373	31,403
20	5,094	4,096	1,846	18,232	29,288
21	4,554	6,521	3,005	18,044	32,124
22	5,765	8,546	6,113	16,009	36,433
23	10,673	4,293	9,432	17,953	42,351
24	3,069	4,418	117	16,236	23,840
25	7,061	7,468	7,493	17,742	39,763
26	5,535	4,018	18,739	20,838	49,129
27	9,511	5,600	892	20,922	36,925
28	7,851	5,104	2,996	16,776	32,727
29	8,151	5,528	887	19,180	33,747
30	11,972	1,799	142	20,048	33,960
31	15,799	704	10	20,206	36,719
32	5,515	10,701	139	19,810	36,165



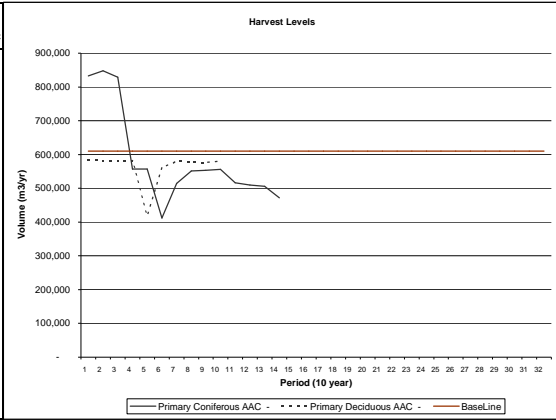
Period	Harvest Volumes by Species							Total
	Pine	SW	FB	SB	AW	PB	BW	
0	-	-	-	-	-	-	-	-
1	571,013	143,241	16,896	81,571	559,570	76,378	60,059	1,508,728
2	635,296	120,000	15,206	84,060	532,029	63,371	59,510	1,509,472
3	629,056	120,000	13,666	63,535	549,232	73,981	59,580	1,509,070
4	58,633	402,245	55,803	21,898	550,303	54,907	61,457	1,205,245
5	42,215	447,859	59,493	19,500	524,071	54,240	57,407	1,204,896
6	148,416	312,859	19,119	24,685	587,106	60,686	55,028	1,207,899
7	156,240	270,780	20,128	46,600	589,336	62,121	63,894	1,209,099
8	115,648	111,682	5,726	259,654	590,102	59,696	69,623	1,212,131
9	353,409	90,138	8,862	81,208	559,202	52,707	67,489	1,213,035
10	86,483	113,886	5,413	286,177	589,394	61,474	69,349	1,212,176
11	205,670	146,067	6,582	123,133	598,531	63,602	67,568	1,211,153
12	270,861	78,948	10,009	151,464	576,561	57,440	65,110	1,212,394
13	395,845	101,645	8,139	53,374	579,660	59,213	65,115	1,282,991
14	327,885	155,466	35,339	113,841	567,941	56,037	61,342	1,317,852
15	326,685	151,444	22,812	98,278	597,652	60,751	61,840	1,319,462
16	311,155	144,502	11,818	72,373	637,420	60,494	66,791	1,306,632
17	415,791	71,666	19,830	95,575	596,216	62,531	64,156	1,325,764
18	301,156	144,829	21,165	88,167	598,049	60,317	63,425	1,277,108
19	231,751	194,651	18,103	76,791	611,007	59,272	64,254	1,255,630
20	327,846	94,137	8,169	72,834	624,464	61,217	66,896	1,255,383
21	221,011	186,123	13,079	81,471	613,556	71,022	65,554	1,251,815
22	231,449	165,918	10,684	101,121	612,069	66,030	64,073	1,251,343
23	271,225	117,820	7,749	104,962	616,517	63,241	66,089	1,247,603
24	129,747	233,074	10,196	31,222	653,850	67,594	71,202	1,246,875
25	215,019	218,498	8,270	75,147	638,771	74,448	66,236	1,299,388
26	257,464	80,447	9,727	182,131	591,520	59,116	64,809	1,245,214
27	322,996	103,899	14,249	75,845	602,554	64,172	64,828	1,248,522
28	294,420	151,577	33,376	104,015	557,878	54,317	60,918	1,246,932
29	285,576	142,080	20,584	87,571	587,675	59,335	61,762	1,244,583
30	277,151	137,116	10,352	64,652	627,807	59,275	68,401	1,244,753
31	362,021	88,626	17,212	83,664	586,515	60,993	64,126	1,245,396
32	306,065	164,348	21,721	89,705	601,562	60,919	63,401	1,307,740



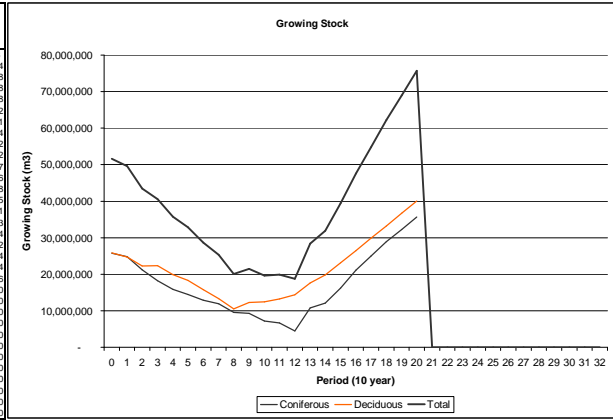
Scenario	Playback	PFMS	Preferred Forest Management Scenario
Number of Periods	32	Minimum Coniferous Harvest Age	70 years
Period Length	5 Years	Minimum Coniferous Harvest Age	50 years
Landbase Version	2	Constraints:	
Yields	S20_v6.yld		
Number of Themes	8		
Regen Lag	- Years	Comments: Playback of Stanley Sequence	

619000  
557100 (0.00)

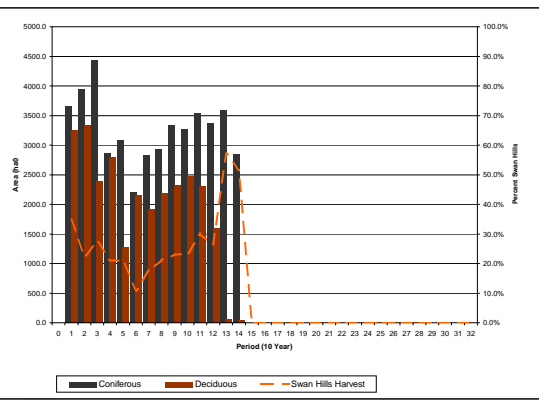
Period	Harvest Levels (m <sup>3</sup> /year)			
	Primary Coniferous AAC	Secondary Coniferous AAC	Primary Deciduous AAC	Secondary Deciduous AAC
0	-	-	-	-
1	832,988	-	583,705	-
2	848,227	-	581,734	-
3	829,233	-	581,764	-
4	557,087	-	581,718	-
5	556,767	-	419,228	-
6	411,824	-	559,850	-
7	514,272	-	580,535	-
8	551,148	-	575,462	-
9	553,693	-	575,549	-
10	556,848	-	580,555	-
11	516,360	-	-	-
12	509,365	-	-	-
13	505,729	-	-	-
14	471,556	-	-	-
15	-	-	-	-
16	-	-	-	-
17	-	-	-	-
18	-	-	-	-
19	-	-	-	-
20	-	-	-	-
21	-	-	-	-
22	-	-	-	-
23	-	-	-	-
24	-	-	-	-
25	-	-	-	-
26	-	-	-	-
27	-	-	-	-
28	-	-	-	-
29	-	-	-	-
30	-	-	-	-
31	-	-	-	-
32	-	-	-	-



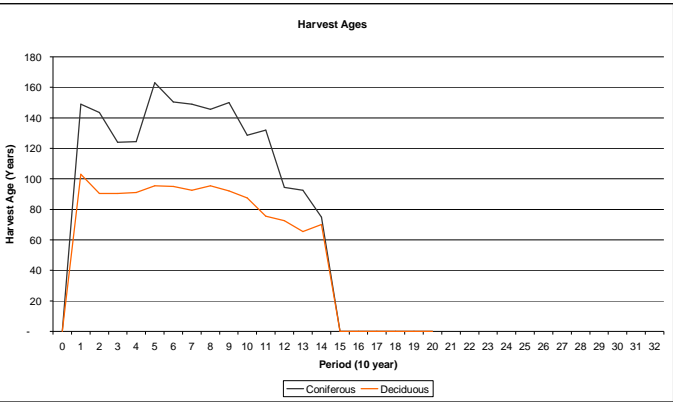
Period	Growing Stock		
	Coniferous	Deciduous	Total
0	25,749,359	25,842,826	51,592,186
1	24,821,411	24,745,109	49,566,520
2	21,168,967	22,291,756	43,460,723
3	18,228,117	22,356,557	40,584,674
4	15,850,711	19,890,714	35,741,425
5	14,497,395	18,344,557	32,841,952
6	12,843,228	15,782,873	28,626,101
7	11,934,742	13,350,056	25,284,798
8	9,690,861	10,462,073	20,152,934
9	9,265,830	12,225,769	21,491,599
10	7,219,357	12,405,881	19,625,237
11	6,651,087	13,240,308	19,891,395
12	4,427,908	14,348,090	18,775,998
13	10,812,156	17,810,025	28,622,181
14	12,120,576	19,816,692	31,937,268
15	16,252,941	23,160,659	39,413,600
16	21,107,509	26,462,815	47,570,324
17	24,953,682	29,837,967	54,791,649
18	28,952,062	33,230,129	62,182,191
19	32,271,035	36,705,377	68,976,412
20	35,694,152	40,027,070	75,721,222
21	0	0	0
22	0	0	0
23	0	0	0
24	0	0	0
25	0	0	0
26	0	0	0
27	0	0	0
28	0	0	0
29	0	0	0
30	0	0	0
31	0	0	0
32	0	0	0



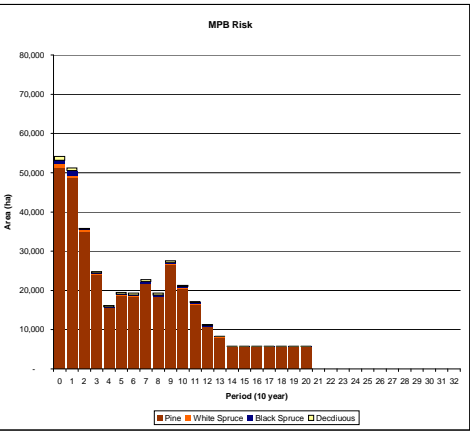
Period	Harvest Areas (ha)		Swan Hills Harvest	
	Coniferous	Deciduous	Area	Percent of Total
0	0.0	0.0	-	-
1	3646.4	3251.7	2,401	34.8%
2	3940.6	3331.4	1,624	22.3%
3	4427.9	2391.8	1,873	27.5%
4	2861.8	2786.5	1,193	21.1%
5	3073.3	1262.7	908	20.9%
6	2204.9	2148.8	477	11.0%
7	2824.9	1911.4	829	17.5%
8	2926.6	2179.4	1,083	21.2%
9	3328.6	2310.9	1,297	23.0%
10	3258.1	2466.4	1,322	23.1%
11	3540.8	2295.9	1,754	30.1%
12	3369.5	1599.4	1,308	26.3%
13	3591.1	56.3	2,083	57.1%
14	2846.2	31.8	1,484	51.6%
15	0.0	0.0	-	#DIV/0!
16	0.0	0.0	-	#DIV/0!
17	0.0	0.0	-	#DIV/0!
18	0.0	0.0	-	#DIV/0!
19	0.0	0.0	-	#DIV/0!
20	0.0	0.0	-	#DIV/0!
21				#DIV/0!
22				#DIV/0!
23				#DIV/0!
24				#DIV/0!
25				#DIV/0!
26				#DIV/0!
27				#DIV/0!
28				#DIV/0!
29				#DIV/0!
30				#DIV/0!
31				#DIV/0!
32				#DIV/0!



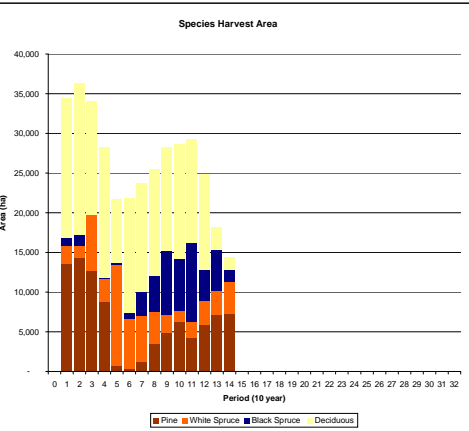
Period	Harvest Ages	
	Coniferous	Deciduous
0	-	-
1	149	103
2	144	91
3	124	91
4	125	91
5	163	96
6	151	85
7	149	93
8	146	96
9	150	92
10	129	88
11	132	76
12	95	73
13	93	66
14	75	70
15	-	-
16	-	-
17	-	-
18	-	-
19	-	-
20	-	-
21	-	-
22	-	-
23	-	-
24	-	-
25	-	-
26	-	-
27	-	-
28	-	-
29	-	-
30	-	-
31	-	-
32	-	-



Period	MPB Risk Area Inventory				Total
	Pine	White Spruce	Black Spruce	Deciduous	
0	51,261	908	907	1,105	54,180
1	48,647	662	1,157	719	51,186
2	34,927	518	93	224	35,761
3	24,055	236	94	424	24,809
4	15,568	83	57	424	16,131
5	18,757	53	229	477	19,515
6	18,469	46	229	562	19,297
7	21,800	46	348	553	22,747
8	18,392	46	348	515	19,301
9	26,553	87	404	496	27,541
10	20,568	37	384	316	21,294
11	16,494	37	384	202	17,117
12	10,698	37	317	188	11,240
13	8,027	44	154	66	8,290
14	5,532	44	146	66	5,788
15	5,532	44	146	66	5,788
16	5,532	44	146	66	5,788
17	5,532	44	146	66	5,788
18	5,532	44	146	66	5,788
19	5,532	44	146	66	5,788
20	5,532	44	146	66	5,788
21					
22					
23					
24					
25					
26					
27					
28					
29					
30					
31					
32					



Period	Harvest Areas by Species				Total
	Pine	White Spruce	Black Spruce	Deciduous	
0	-	-	-	-	-
1	13,597	2,196	1,101	17,597	34,491
2	14,264	1,550	1,412	13,094	36,360
3	12,757	7,018	35	14,289	34,099
4	8,733	2,945	46	16,519	28,242
5	772	12,735	148	8,055	21,710
6	355	6,243	786	14,385	21,768
7	1,278	5,721	2,987	13,695	23,682
8	3,488	4,080	4,587	13,376	25,530
9	4,933	2,277	7,971	13,021	28,203
10	6,276	1,420	6,454	14,474	28,623
11	4,273	2,077	9,804	13,030	29,183
12	5,867	3,039	3,900	12,038	24,844
13	7,085	3,095	5,174	2,883	18,237
14	7,354	3,923	1,522	1,591	14,390
15	-	-	-	-	-
16	-	-	-	-	-
17	-	-	-	-	-
18	-	-	-	-	-
19	-	-	-	-	-
20	-	-	-	-	-
21	-	-	-	-	-
22	-	-	-	-	-
23	-	-	-	-	-
24	-	-	-	-	-
25	-	-	-	-	-
26	-	-	-	-	-
27	-	-	-	-	-
28	-	-	-	-	-
29	-	-	-	-	-
30	-	-	-	-	-
31	-	-	-	-	-
32	-	-	-	-	-



Period	Harvest Volumes by Species							Total
	Pine	SW	FB	SB	AW	PB	BW	
0	-	-	-	-	-	-	-	-
1	568,750	142,082	19,521	79,677	553,655	70,076	61,177	1,494,938
2	624,788	119,686	12,804	84,471	539,525	69,127	58,769	1,509,169
3	399,810	322,915	48,680	50,257	541,827	61,561	59,607	1,484,656
4	277,464	192,071	19,382	34,141	559,270	66,010	62,056	1,210,393
5	93,744	412,008	48,490	22,519	371,347	40,245	36,054	1,024,408
6	63,135	244,323	24,932	29,511	558,388	57,140	58,881	1,036,310
7	121,556	235,611	14,057	78,002	591,256	60,901	63,254	1,164,635
8	173,029	196,673	14,033	116,671	574,398	57,871	65,207	1,197,862
9	202,237	111,673	6,405	193,099	573,099	57,528	67,643	1,201,733
10	244,682	105,317	8,293	152,667	573,678	57,035	67,755	1,209,428
11	163,276	93,806	7,033	200,526	511,655	52,874	59,637	1,088,807
12	250,081	103,942	5,639	98,118	402,917	43,025	44,558	948,290
13	303,682	48,714	8,157	120,871	81,026	9,728	6,394	578,571
14	263,782	97,877	20,319	71,971	106,256	11,381	7,894	579,481
15	-	-	-	-	-	-	-	-
16	-	-	-	-	-	-	-	-
17	-	-	-	-	-	-	-	-
18	-	-	-	-	-	-	-	-
19	-	-	-	-	-	-	-	-
20	-	-	-	-	-	-	-	-
21	-	-	-	-	-	-	-	-
22	-	-	-	-	-	-	-	-
23	-	-	-	-	-	-	-	-
24	-	-	-	-	-	-	-	-
25	-	-	-	-	-	-	-	-
26	-	-	-	-	-	-	-	-
27	-	-	-	-	-	-	-	-
28	-	-	-	-	-	-	-	-
29	-	-	-	-	-	-	-	-
30	-	-	-	-	-	-	-	-
31	-	-	-	-	-	-	-	-
32	-	-	-	-	-	-	-	-

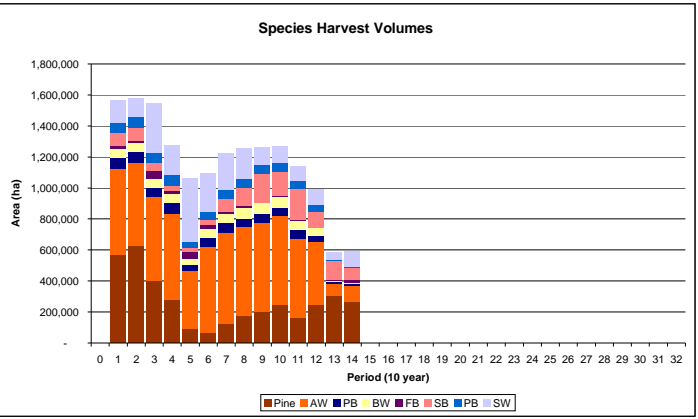


Table 14

Period	Scheduled Volume		
	Coniferous	Deciduous	Total
1	4,164,941	2,918,526	7,083,467
2	4,241,136	2,908,672	7,149,808
3	4,146,164	2,908,821	7,054,985
Total	12,552,241	8,736,019	21,288,259
AAC	836,816	582,401	1,419,217
Aspatial	848,458	581,829	1,430,286
Variance	-1.37%	0.10%	-0.77%