

**ALBERTA TRANSPORTATION SPRINGBANK OFF-STREAM RESERVOIR PROJECT
RESPONSE TO NRCB AND AEP SUPPLEMENTAL INFORMATION REQUEST 1, JULY 28, 2018**

Appendix IR2-1 Draft Principles for Future Land Use of the Proposed Springbank Off-Stream Reservoir
Project
May 2019

**APPENDIX IR2-1 DRAFT PRINCIPLES FOR FUTURE LAND USE OF
THE PROPOSED SPRINGBANK OFF-STREAM
RESERVOIR PROJECT**

**ALBERTA TRANSPORTATION SPRINGBANK OFF-STREAM RESERVOIR PROJECT
RESPONSE TO NRCB AND AEP SUPPLEMENTAL INFORMATION REQUEST 1, JULY 28, 2018**

Appendix IR2-1 Draft Principles for Future Land Use of the Proposed Springbank Off-Stream Reservoir
Project
May 2019

DRAFT PRINCIPLES FOR FUTURE LAND USE OF THE PROPOSED SPRINGBANK OFF-STREAM RESERVOIR PROJECT

Introduction

The flood of 2013 affected numerous communities across southern Alberta resulting in fatalities and significant loss of property. Calgary and surrounding communities along the Bow and Elbow rivers were among those heavily impacted.

Following the 2013 flood, the Government of Alberta undertook an assessment of mitigation strategies that could be used to reduce the risk of future floods. The proposed SR1 Springbank Off-Stream Reservoir Project (**Project**) was selected to mitigate flooding events in Calgary and downstream communities along the Elbow River. If approved, the Project will be used to divert and temporarily retain water from the Elbow River for the purpose of flood mitigation.

Background

Through the engagement process for the Project, Alberta Transportation received feedback that First Nations and stakeholders would like access to the Project lands. The construction and management of a dry reservoir presents a unique opportunity with the conversion of private land to Crown land for future use by First Nations and stakeholders.

Land Use Area

The proposed project development area for the Project is outlined in black on the attached figure (**PDA**). The following principles apply to the land use area (**LUA**) outlined in yellow on the attached figure (Figure 1). The primary use of all lands within the PDA, including the LUA, is for flood mitigation.

The future uses of the LUA will be determined after engagement with First Nations and stakeholders regarding such future uses, in accordance with any applicable Government of Alberta policies and procedures at the time of the future engagement. This document contains the substantive land-use principles that are anticipated to guide that engagement process.

Engagement Process

The engagement process for the LUA will include engagement with First Nations and stakeholders. First Nations will be invited to participate in the engagement process. The Government of Alberta anticipates providing funding to First Nations to assist with participating in the engagement process. The stakeholders will also be provided with opportunities to participate in the engagement process.

Terms of Reference for LUA

The LUA will come into effect after construction is complete. The principles that will guide the use of LUA are set out below.

1. Primary Use

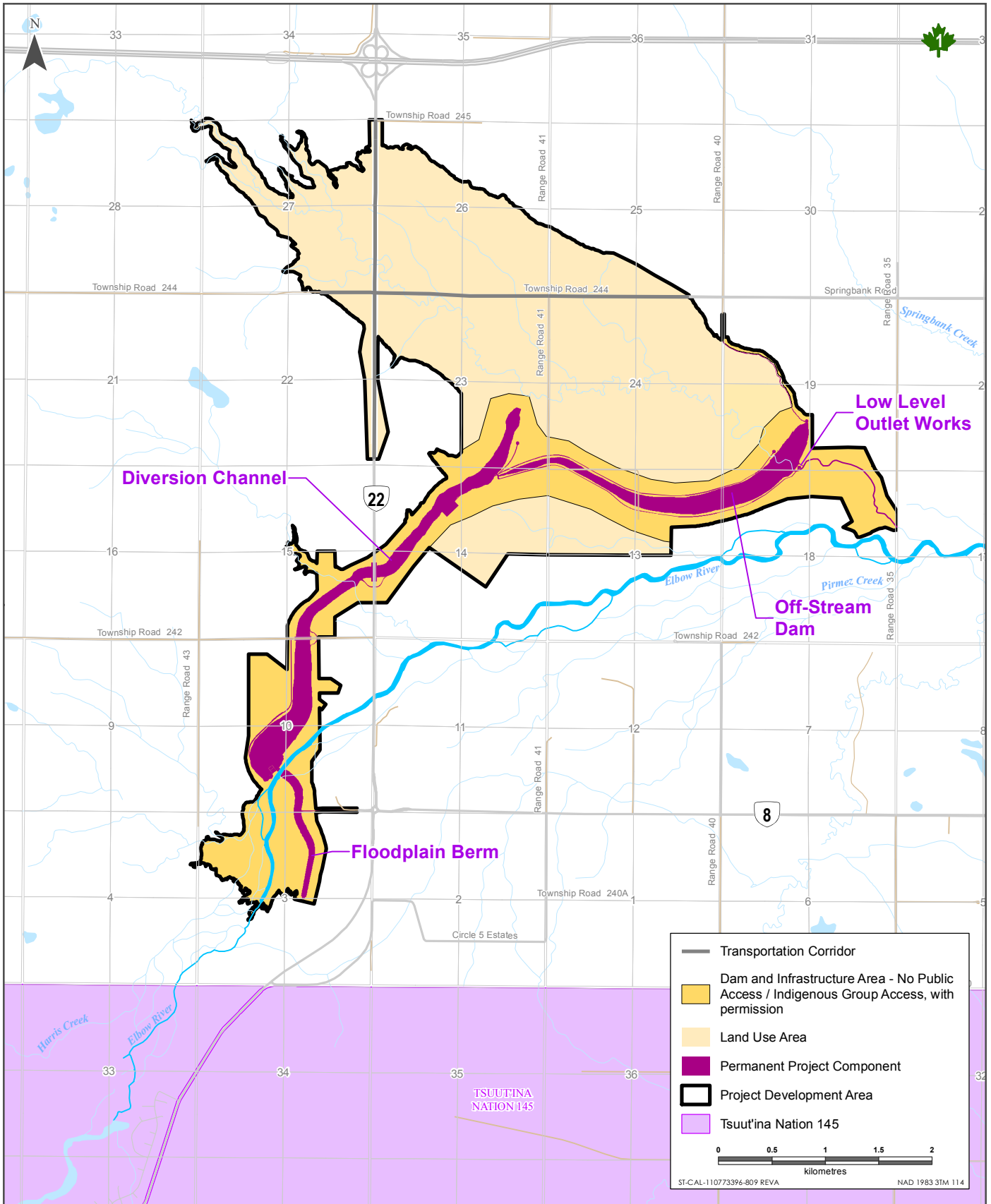
- a) The primary use of all lands within the PDA, including the LUA, is for flood mitigation (**Primary Use**). Any secondary uses of the PDA cannot conflict with the Primary Use. Land use activities that limit or otherwise affect the operation or functioning of the Project for its Primary Use, including the ability to fill to full capacity, retain, and release back to the Elbow River, will not be allowed.

- b) Consistent with the Primary Use and for protection of the reservoir infrastructure, any secondary uses will be limited to the LUA.

2. Secondary Uses

- a) In light of the Primary Use, the safety of anyone with access or land users will be an overriding factor.
- b) Vegetation and habitat management as well as any post-flood remediation actions will be in compliance and consistent with the regulatory approvals for the Project.
- c) In general, only uses and activities that have a minimal impact on the land will be allowed. Therefore, the availability of surface dispositions will be limited.
- d) In general, First Nations' traditional activities, including the exercise of treaty rights such as hunting, will be allowed.

The above list of substantive land-use planning principles is anticipated to be implemented using the variety of land-management tools available to the Government of Alberta, in accordance with legislation applicable at the relevant time.



Sources: Base Data - Government of Canada. Thematic Data - Government of Alberta

Land Use Area within the PDA

