

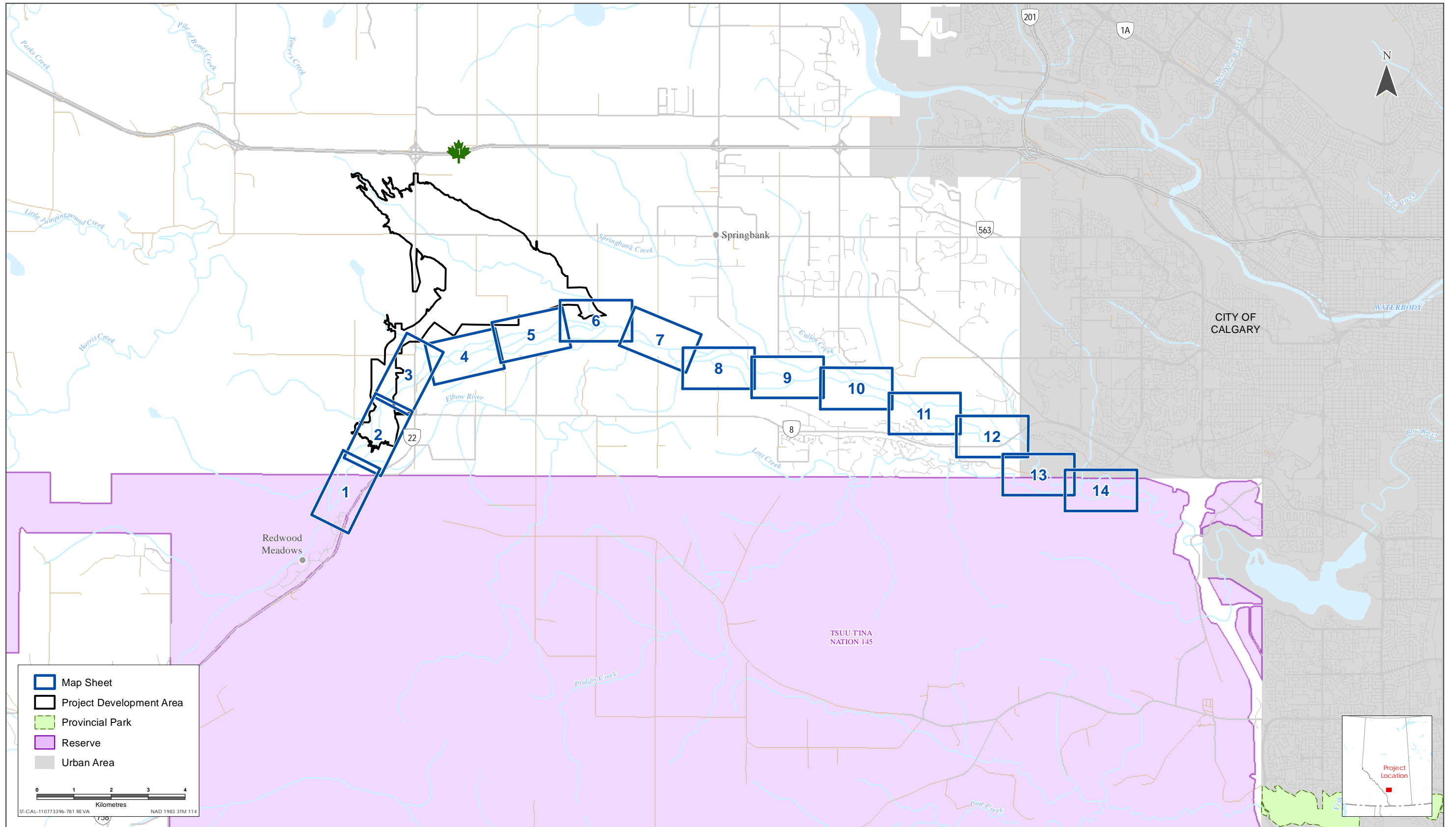
**ALBERTA TRANSPORTATION SPRINGBANK OFF-STREAM RESERVOIR PROJECT  
RESPONSE TO NRCB AND AEP SUPPLEMENTAL INFORMATION REQUEST 1, JULY 28, 2018**

Appendix IR361-1 Habitat Mapping of the Elbow River and Associated Reaches Within Proximity to the PDA  
May 2019

**APPENDIX IR361-1 HABITAT MAPPING OF THE ELBOW RIVER  
AND ASSOCIATED REACHES WITHIN  
PROXIMITY TO THE PDA**

**ALBERTA TRANSPORTATION SPRINGBANK OFF-STREAM RESERVOIR PROJECT  
RESPONSE TO NRCB AND AEP SUPPLEMENTAL INFORMATION REQUEST 1, JULY 28, 2018**

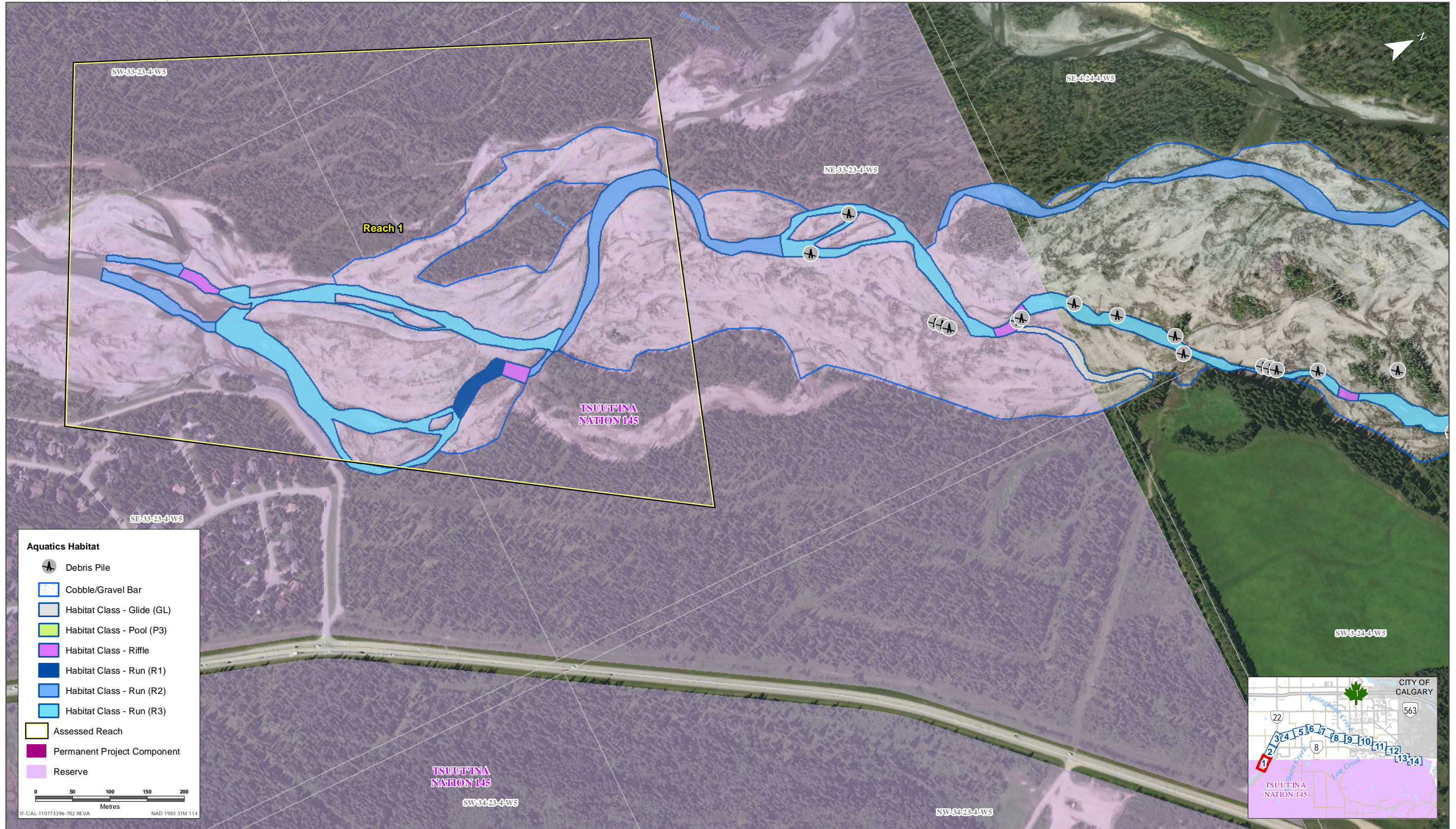
Appendix IR361-1 Habitat Mapping of the Elbow River and Associated Reaches Within Proximity to the  
PDA  
May 2019



Sources: Base Data - Government of Alberta, Government of Canada. Thematic Data - Stantec Ltd.

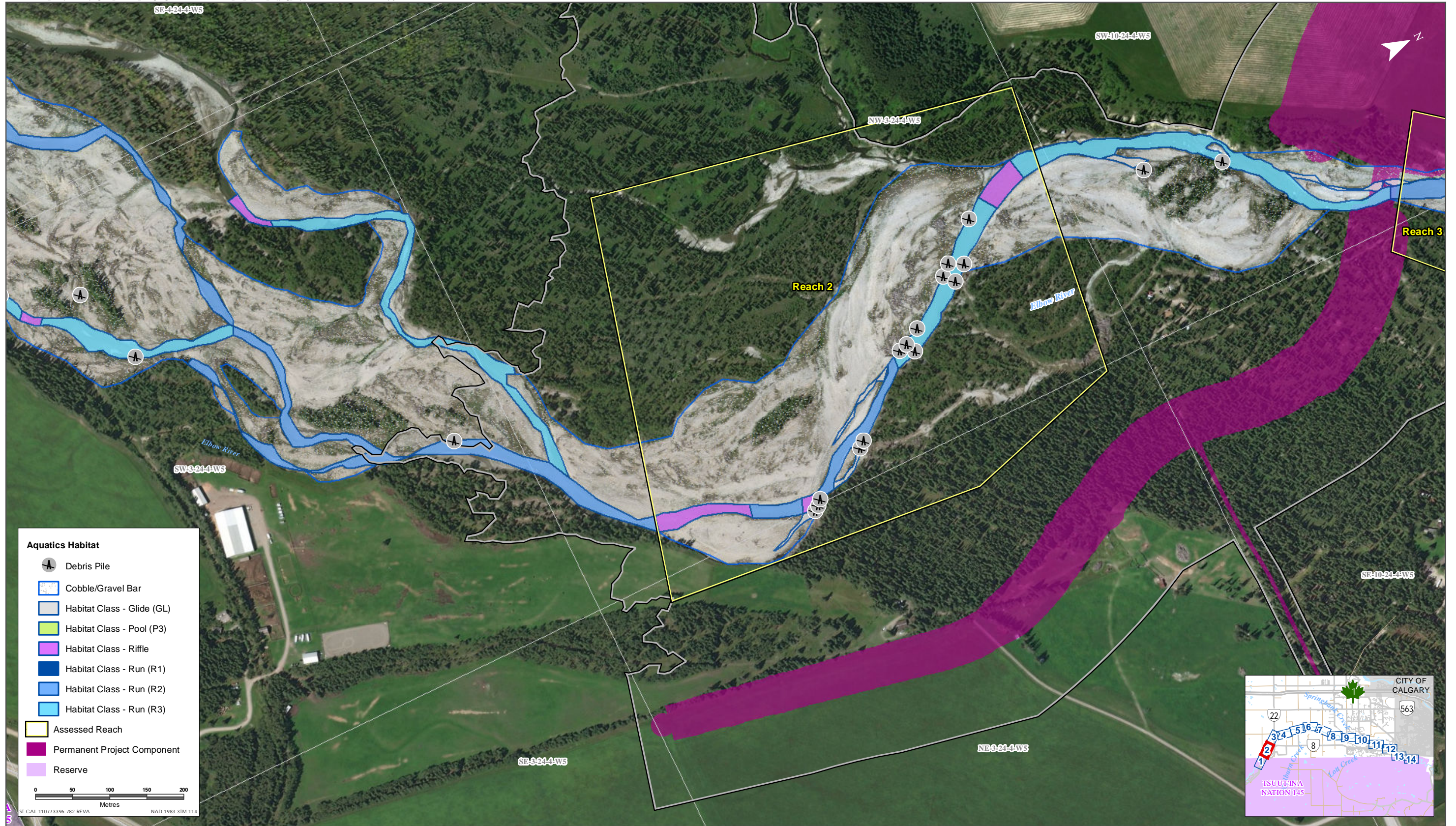






Sources: Base Data - Government of Alberta, Government of Canada. Thematic Data - Stantec Ltd.  
 Imagery: Source: Esri, DigitalGlobe, GeoEye, Earthstar Geographics, CNES/Airbus DS, USDA, USGS, AeroGRID, IGN, and the GIS User Community





**Aquatics Habitat**

- Debris Pile
- Cobble/Gravel Bar
- Habitat Class - Glide (GL)
- Habitat Class - Pool (P3)
- Habitat Class - Riffle
- Habitat Class - Run (R1)
- Habitat Class - Run (R2)
- Habitat Class - Run (R3)
- Assessed Reach
- Permanent Project Component
- Reserve

0 50 100 150 200  
Metres

ST-CAL-110773396-782 REVA NAD 1983 3TM 114

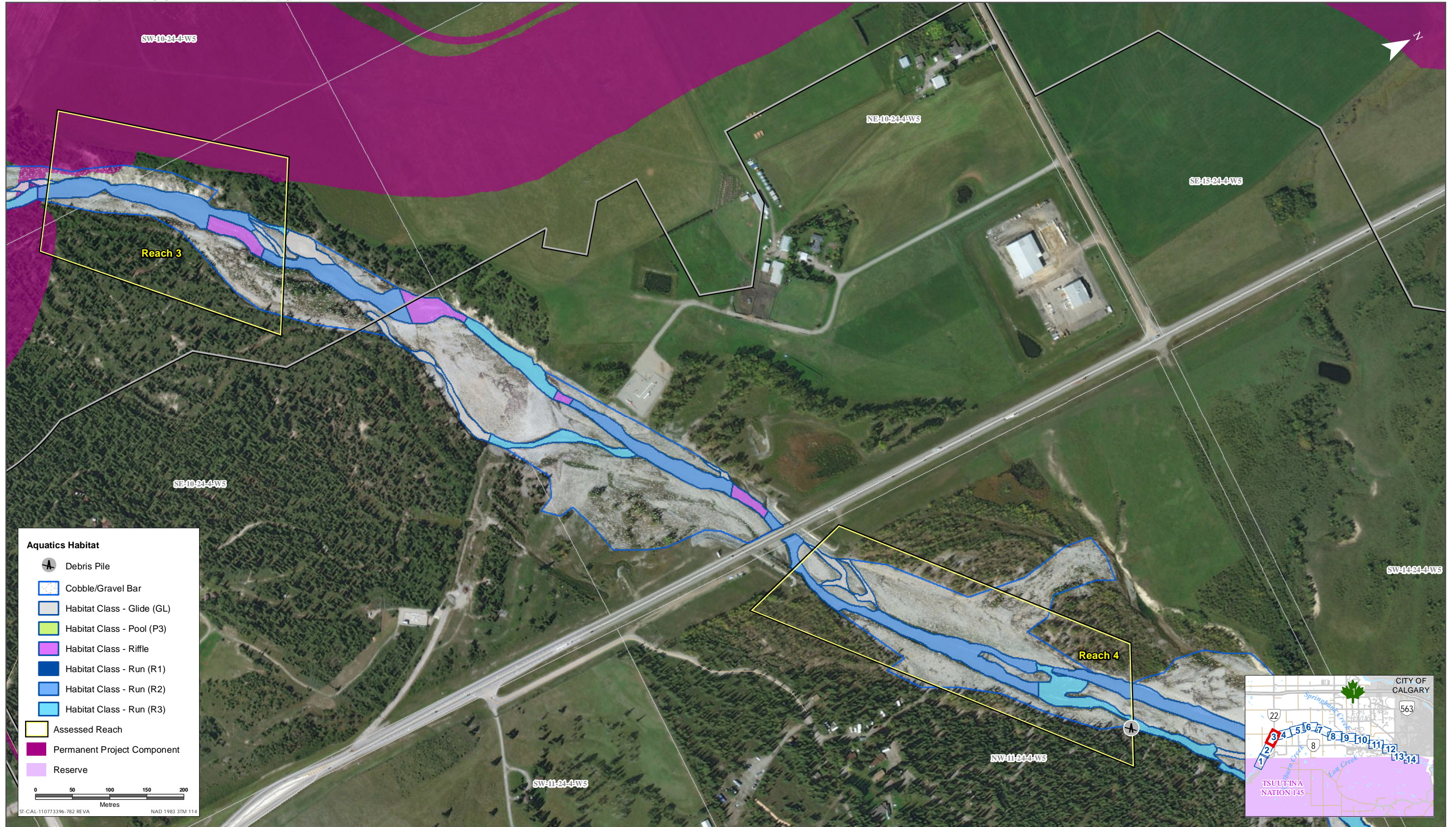
Sources: Base Data - Government of Alberta, Government of Canada. Thematic Data - Stantec Ltd.  
Imagery: Source: Esri, DigitalGlobe, GeoEye, Earthstar Geographics, CNES/Airbus DS, USDA, USGS, AeroGRID, IGN, and the GIS User Community



Habitat Mapping of the Elbow River and Associated Reaches within Proximity to the PDA

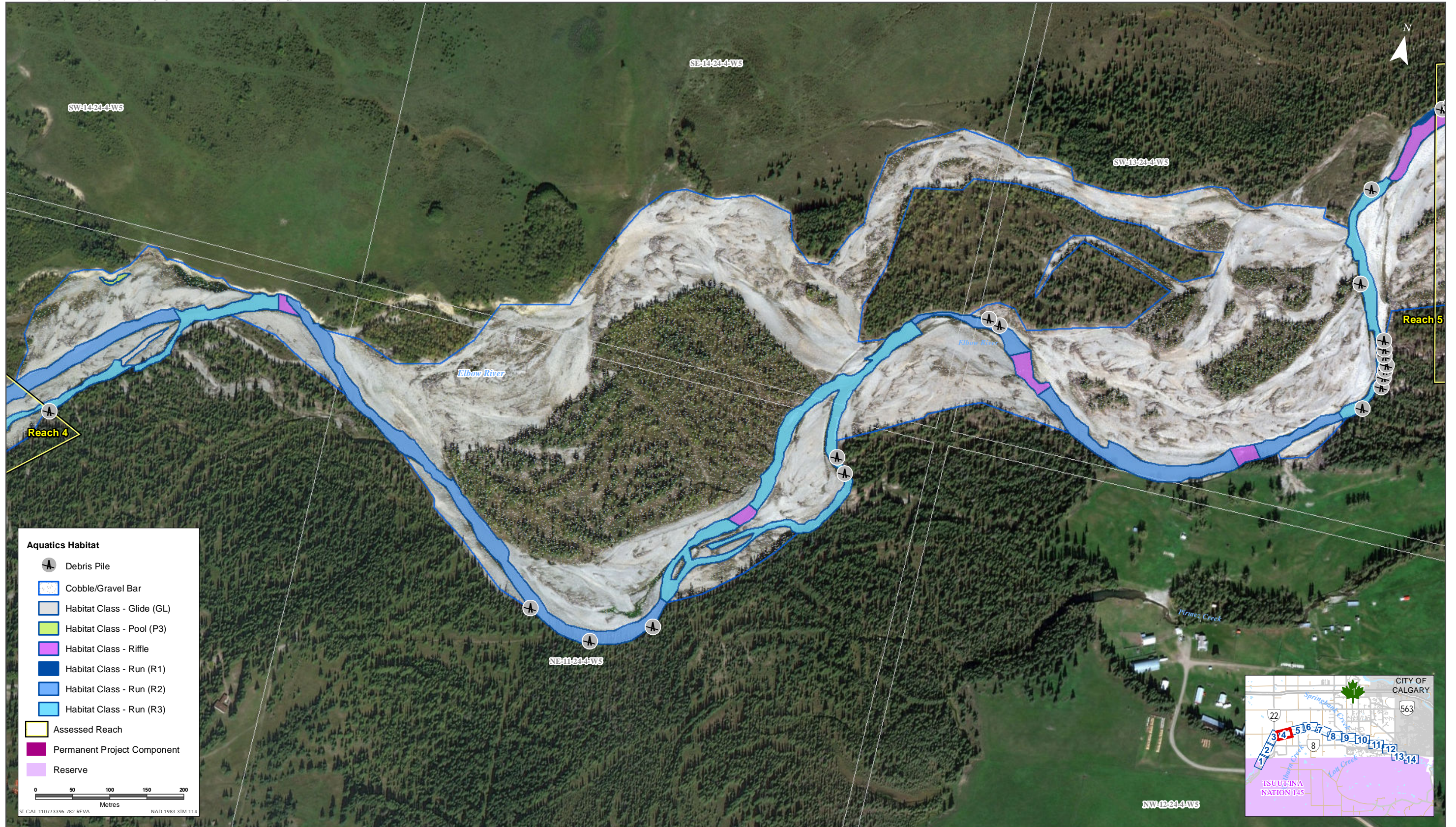
Figure IR361-2





Sources: Base Data - Government of Alberta, Government of Canada. Thematic Data - Stantec Ltd.  
Imagery: Source: Esri, DigitalGlobe, GeoEye, Earthstar Geographics, CNES/Airbus DS, USDA, USGS, AeroGRID, IGN, and the GIS User Community





Sources: Base Data - Government of Alberta, Government of Canada. Thematic Data - Stantec Ltd.  
 Imagery: Source: Esri, DigitalGlobe, GeoEye, Earthstar Geographics, CNES/Airbus DS, USDA, USGS, AeroGRID, IGN, and the GIS User Community

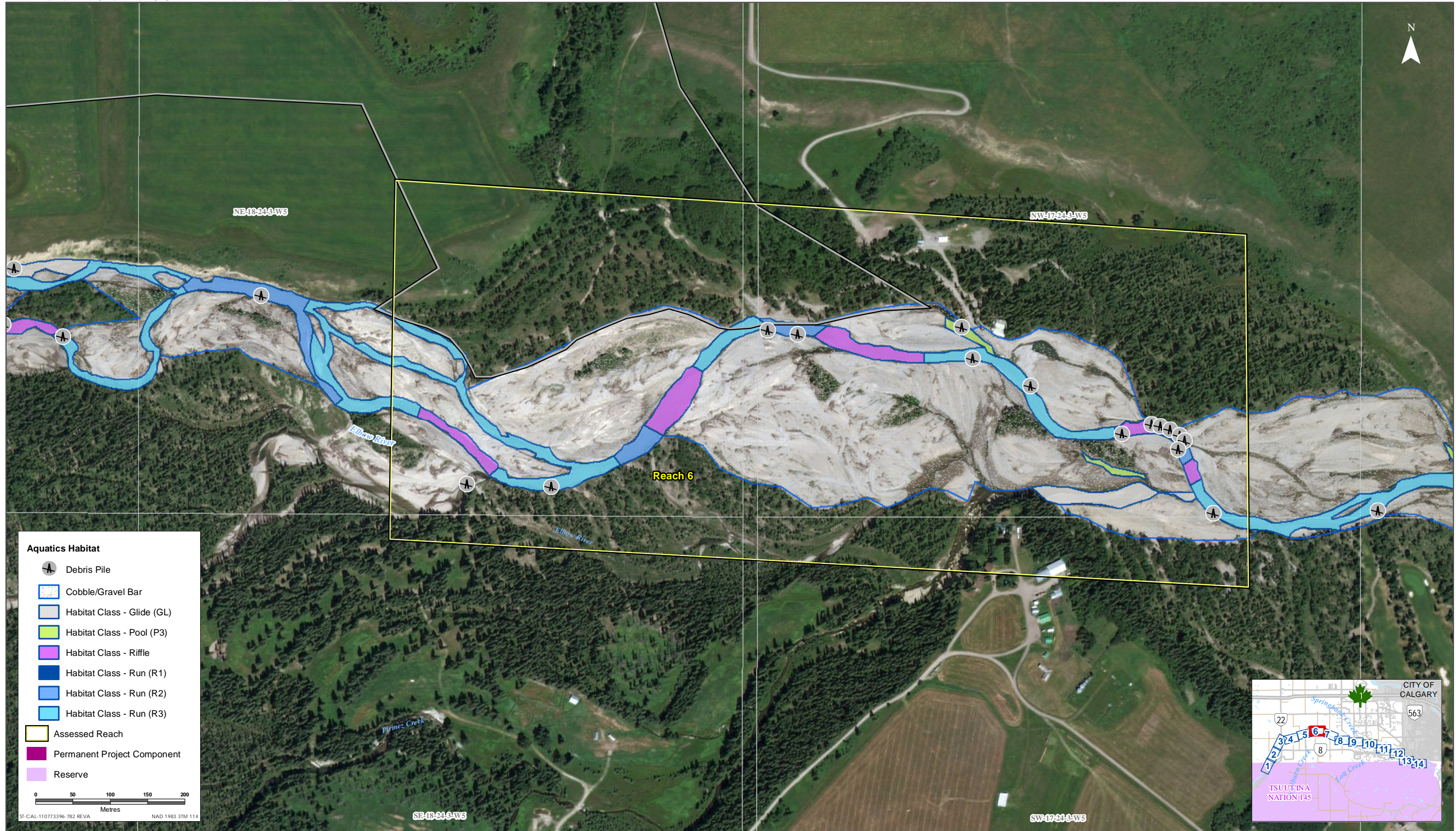
Habitat Mapping of the Elbow River and Associated Reaches within Proximity to the PDA

Figure IR361-4









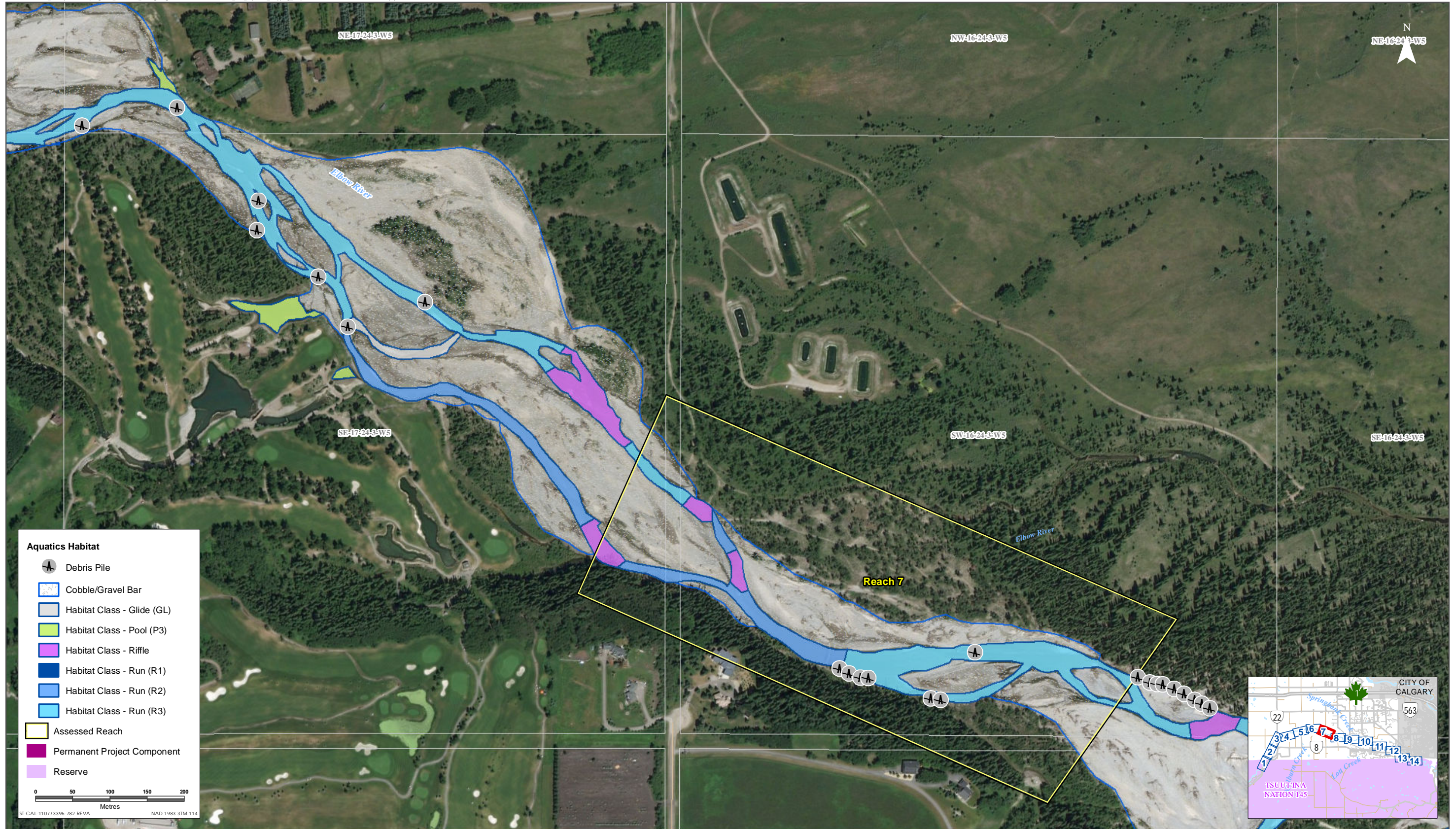
Sources: Base Data - Government of Alberta, Government of Canada. Thematic Data - Stantec Ltd.  
Imagery: Source: Esri, DigitalGlobe, GeoEye, Earthstar Geographics, CNES/Airbus DS, USDA, USGS, AeroGRID, IGN, and the GIS User Community



Habitat Mapping of the Elbow River and Associated Reaches within Proximity to the PDA

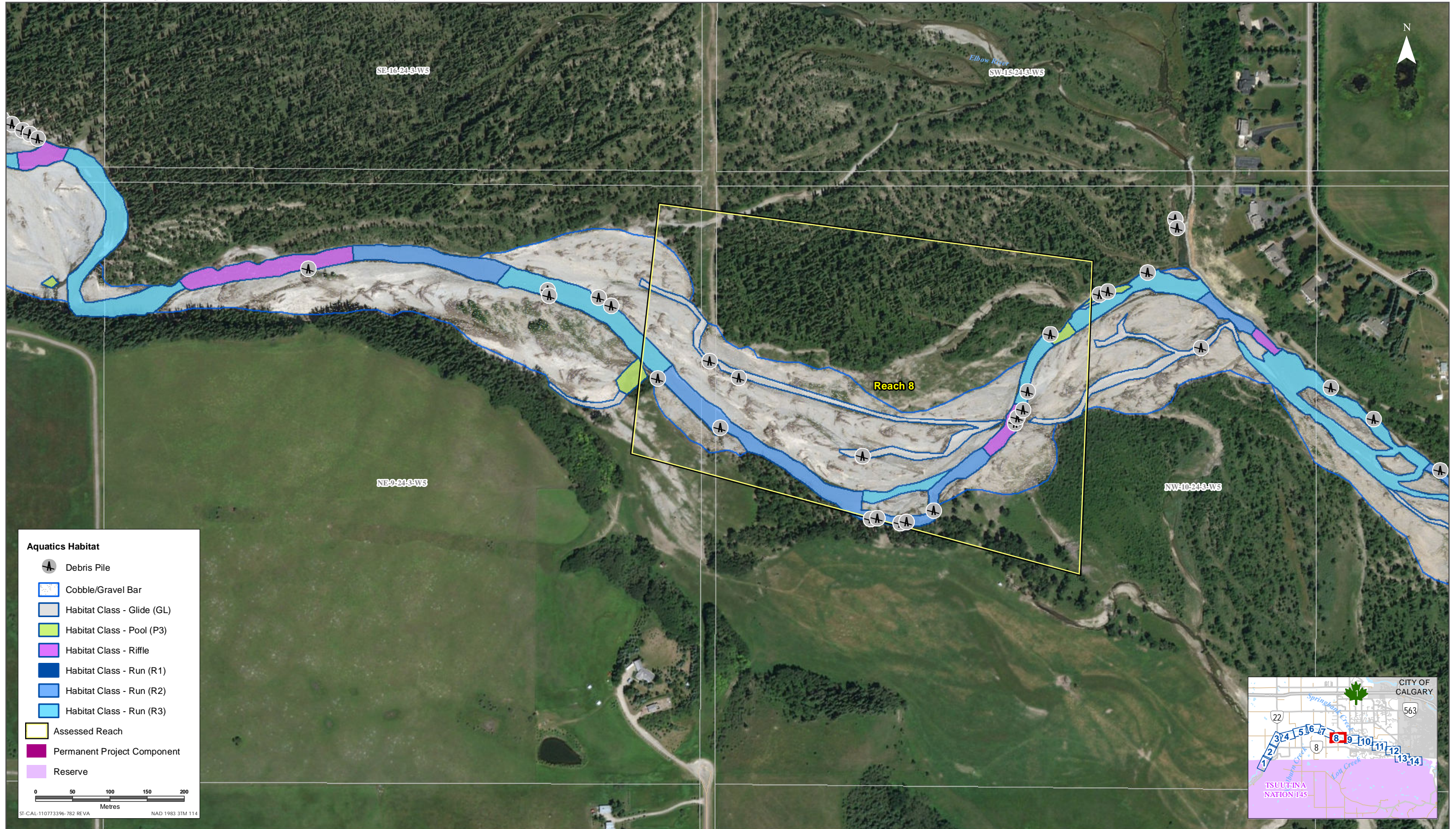
Figure IR361-6





Sources: Base Data - Government of Alberta, Government of Canada. Thematic Data - Stantec Ltd.  
Imagery: Source: Esri, DigitalGlobe, GeoEye, Earthstar Geographics, CNES/Airbus DS, USDA, USGS, AeroGRID, IGN, and the GIS User Community





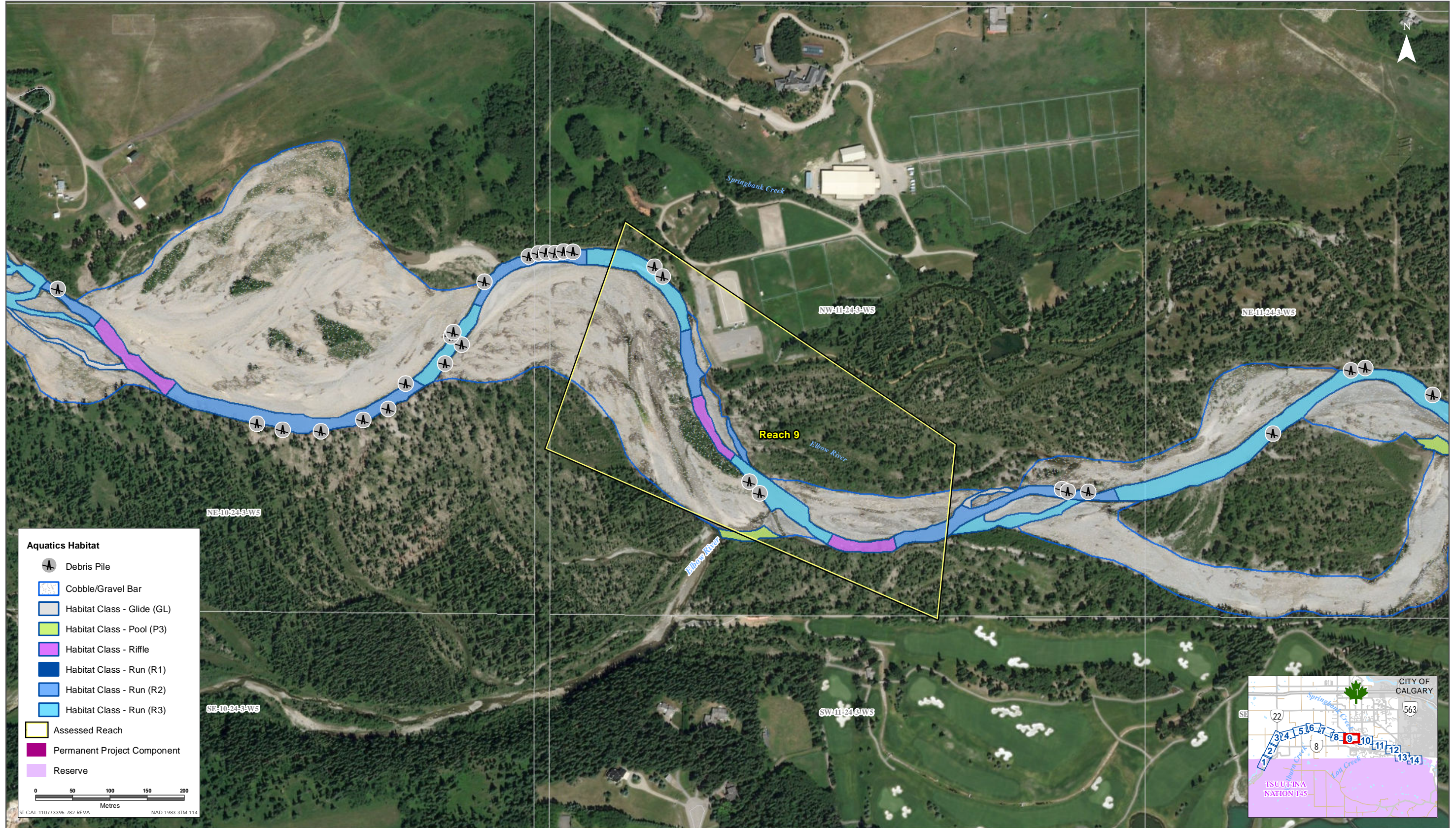
Sources: Base Data - Government of Alberta, Government of Canada. Thematic Data - Stantec Ltd.  
 Imagery: Source: Esri, DigitalGlobe, GeoEye, Earthstar Geographics, CNES/Airbus DS, USDA, USGS, AeroGRID, IGN, and the GIS User Community



Habitat Mapping of the Elbow River and Associated Reaches within Proximity to the PDA

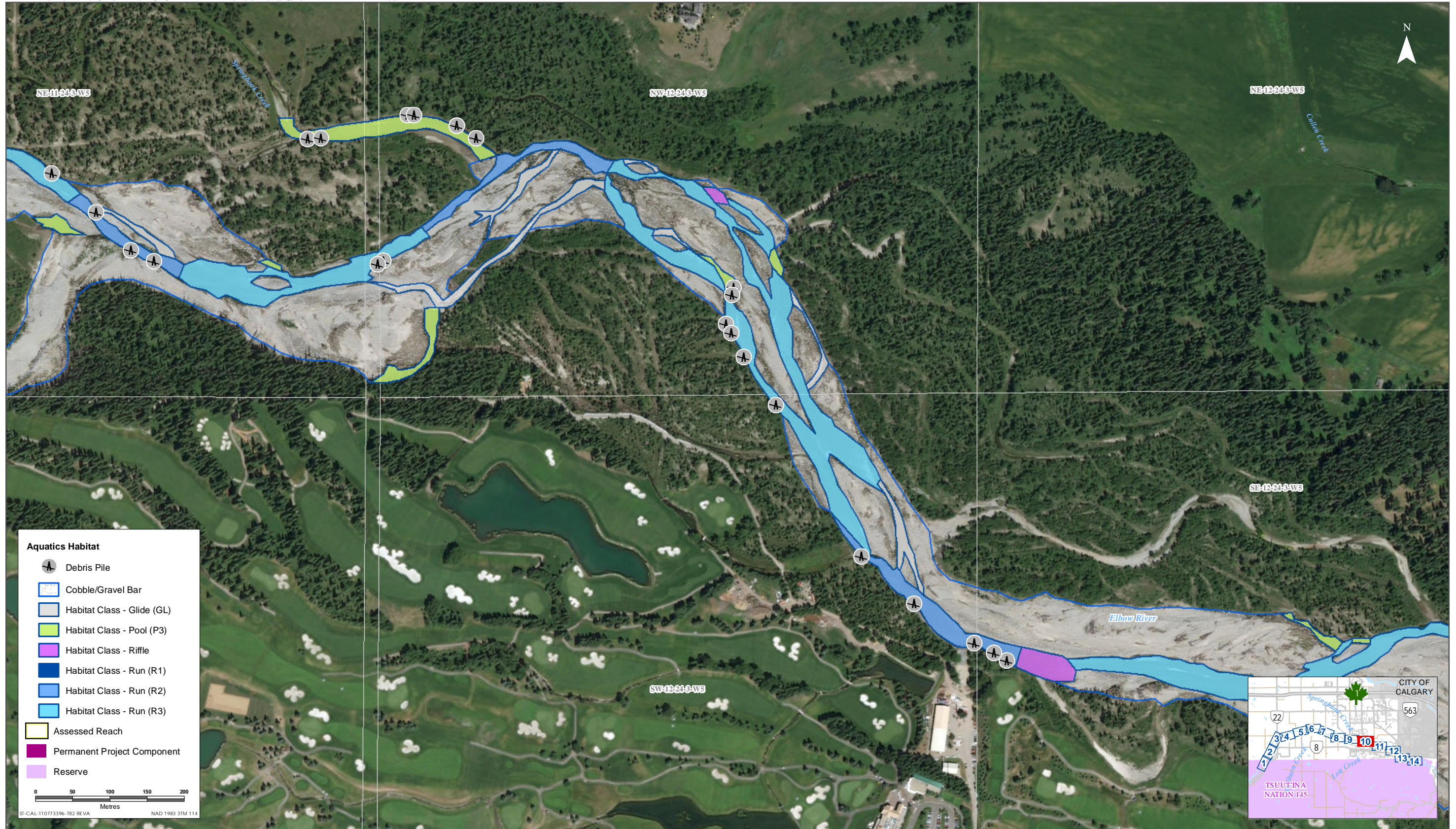
Figure IR361-8





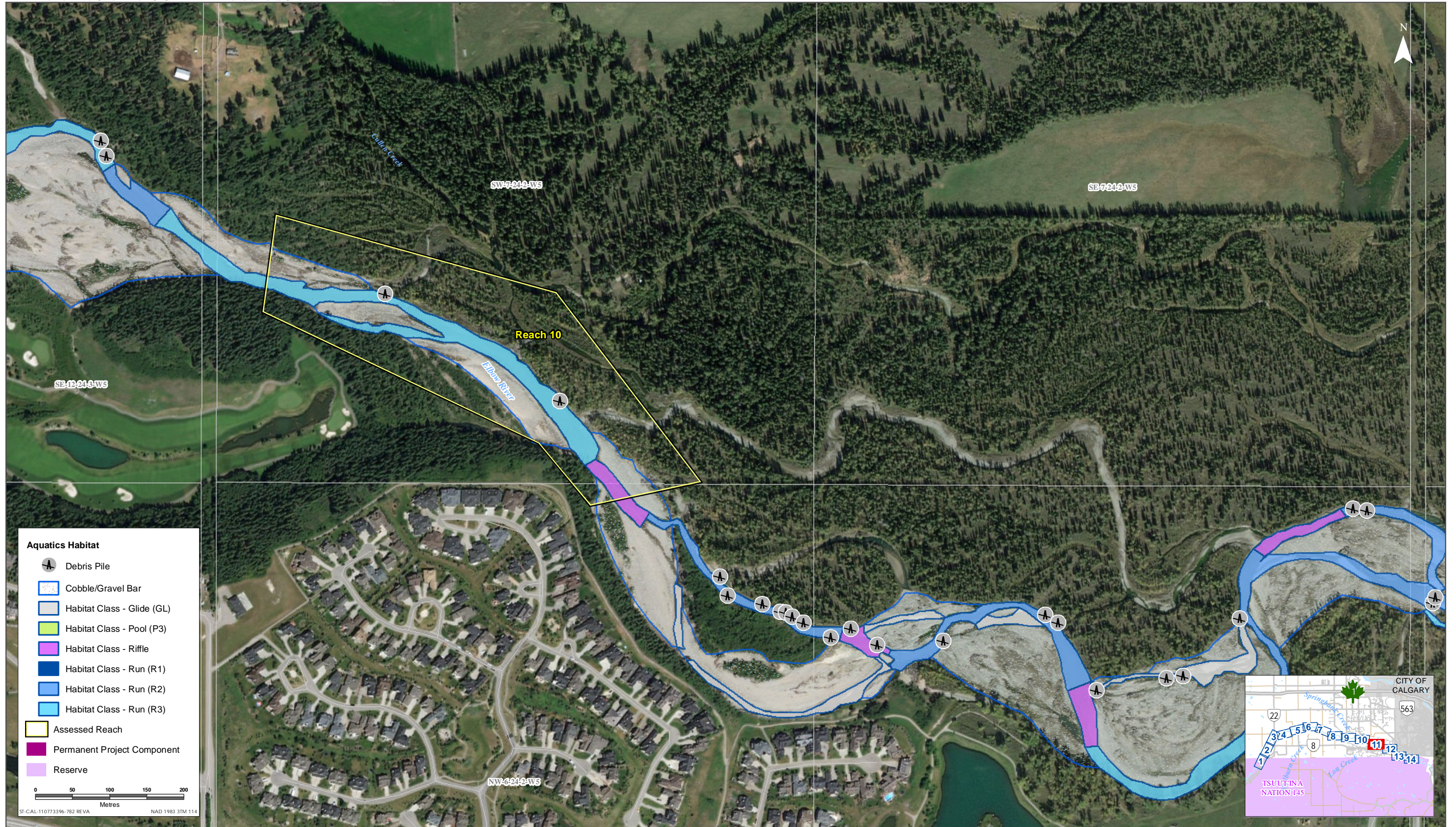
Sources: Base Data - Government of Alberta, Government of Canada. Thematic Data - Stantec Ltd.  
 Imagery: Source: Esri, DigitalGlobe, GeoEye, Earthstar Geographics, CNES/Airbus DS, USDA, USGS, AeroGRID, IGN, and the GIS User Community





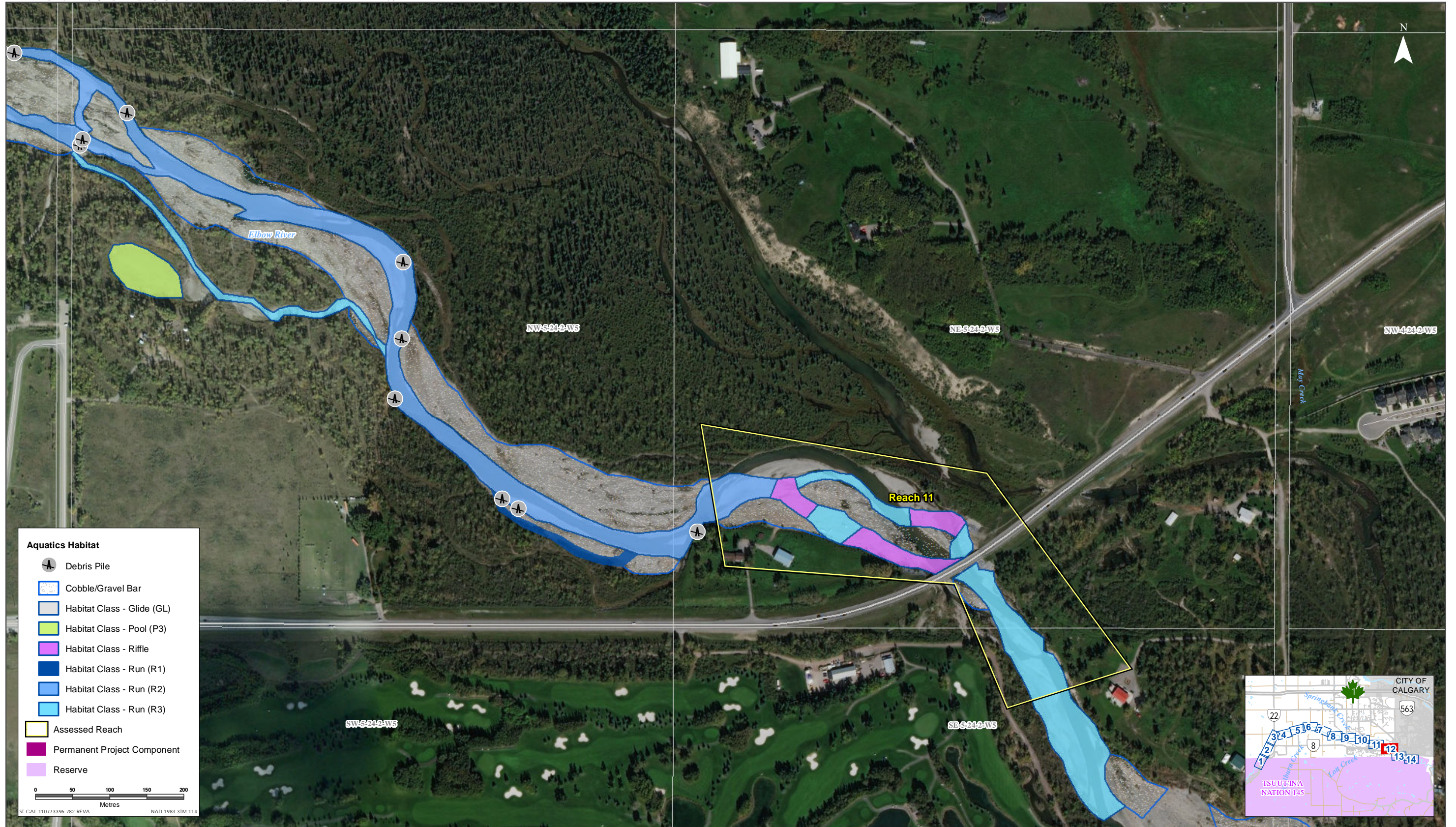
Sources: Base Data - Government of Alberta, Government of Canada. Thematic Data - Stantec Ltd.  
Imagery: Source: Esri, DigitalGlobe, GeoEye, Earthstar Geographics, CNES/Airbus DS, USDA, USGS, AeroGRID, IGN, and the GIS User Community





Sources: Base Data - Government of Alberta, Government of Canada. Thematic Data - Stantec Ltd.  
Imagery: Source: Esri, DigitalGlobe, GeoEye, Earthstar Geographics, CNES/Airbus DS, USDA, USGS, AeroGRID, IGN, and the GIS User Community



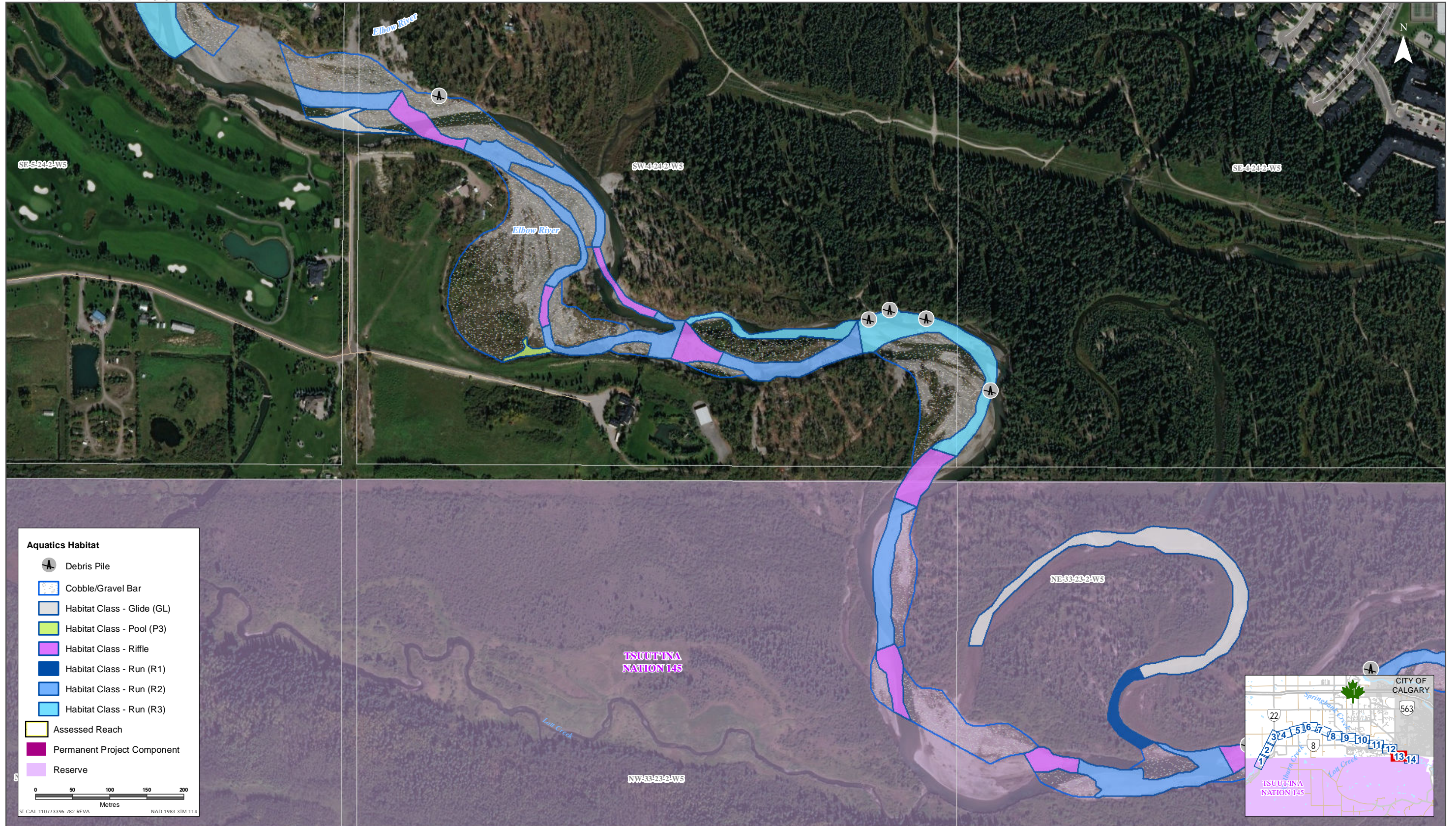


Sources: Base Data - Government of Alberta, Government of Canada. Thematic Data - Stantec Ltd.  
 Imagery: Source: Esri, DigitalGlobe, GeoEye, Earthstar Geographics, CNES/Airbus DS, USDA, USGS, AeroGRID, IGN, and the GIS User Community



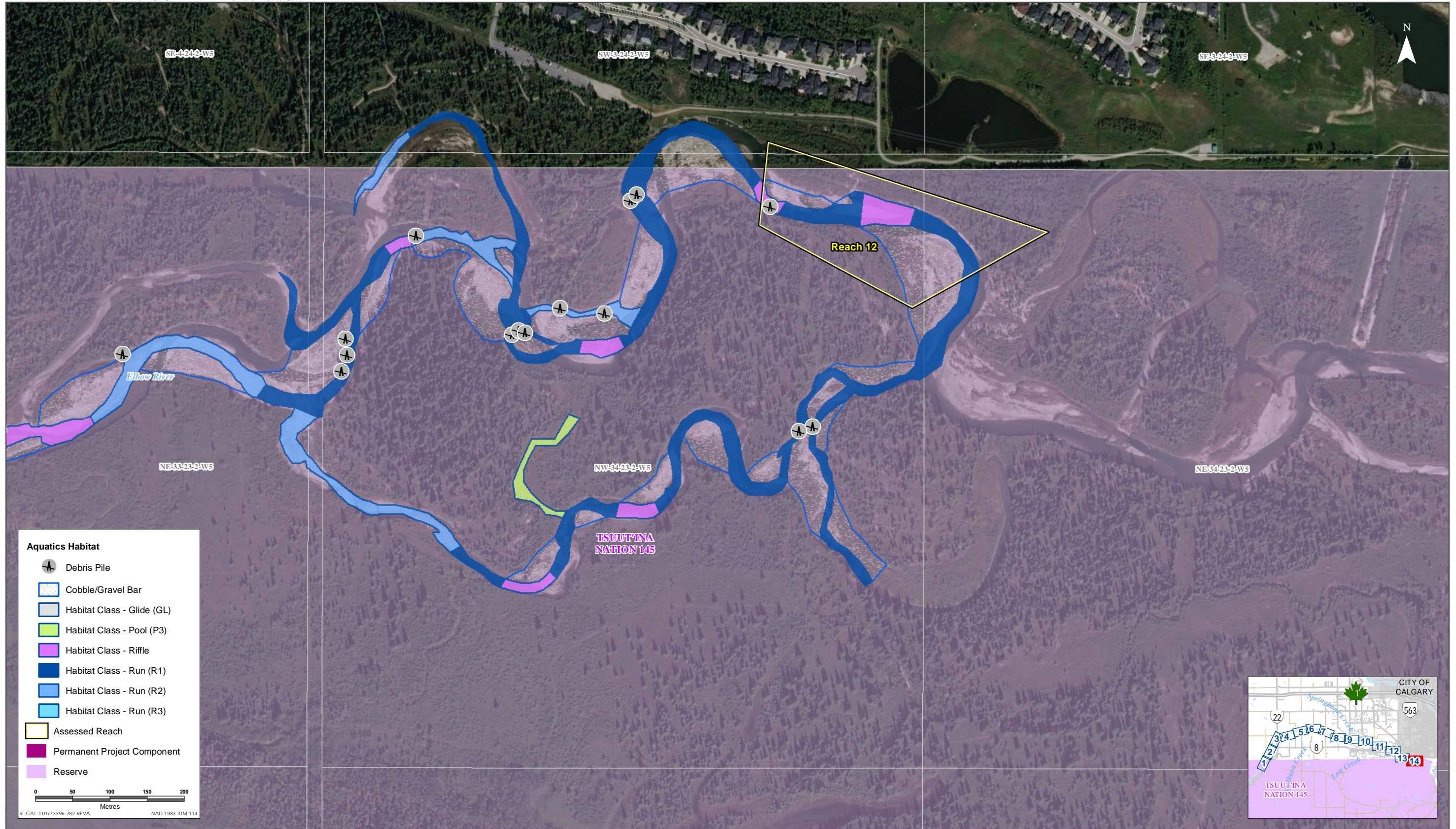
Habitat Mapping of the Elbow River and Associated Reaches within Proximity to the PDA





Sources: Base Data - Government of Alberta, Government of Canada. Thematic Data - Stantec Ltd.  
 Imagery: Source: Esri, DigitalGlobe, GeoEye, Earthstar Geographics, CNES/Airbus DS, USDA, USGS, AeroGRID, IGN, and the GIS User Community





Sources: Base Data - Government of Alberta, Government of Canada. Thematic Data - Stantec Ltd.  
Imagery: Source: Esri, DigitalGlobe, GeoEye, Earthstar Geographics, CNES/Airbus DS, USDA, USGS, AeroGRID, IGN, and the GIS User Community



