



Alberta Farm Input Prices



Average Monthly Prices for January 2020

Farm Input Prices - Dollars (\$)	January 2019	December 2019	January 2020
Construction Grade Lumber, 2x6, spruce, M	992.77	872.77	874.96
Rough Grade Lumber, 2x8, spruce, M	1,100.83	984.74	971.89
Sheathing, plywood, spruce, unsanded, 9.6 mm, 4'x8' sheet	22.68	22.60	22.34
Fence Posts, standard grade, treated, 3-4" diameter, 7' length	6.44	7.08	7.10
Ready-Mix Concrete, 20 mpa strength, cubic metre	249.79	261.13	258.46
Nails, standard grade, 4" spiral, 50 lb box	86.68	93.29	94.21
Pipe, plastic, 1" diameter, 75 psi, 100' coil	63.82	64.69	64.18
Rods, steel reinforcing, 10 mm, 6 metre length	7.77	8.59	8.49
Barbed Wire, 12 gauge, double strand, 40 kg, 80 rod spool	71.96	79.26	81.59
Grain Bin, hopper bottom included, 4,000 bushel capacity, each *	17,649.39	18,902.96	18,926.88
Truck Tires, 1st line, blackwall, LT285-70R-17 Radial (environmental tax included), each	308.68	310.69	310.19
Storage Battery, 12 volt, 24 series, 525 cranking amps, each	118.17	121.09	119.72
V-Belt - Implement, 1/2" x 70", fibre, each	16.86	18.02	16.98
Antifreeze, ethylene glycol, anti-corrosion, 4 litre	17.39	18.81	18.09
Mechanical Repairs, for farm machinery, shop & labour, per hour	134.89	141.37	140.53
Baler Twine, plastic, for round baler, 28,000' bale	34.16	36.27	36.62
General Farm Labour, full-time, without board, per month	3,731.47	3,900.49	3,819.56
Tractor, FWD, 105-130 hp, 6 cylinder diesel, 12-24 speed transmission, new, each	158,474.56	177,571.60	176,515.23
Tractor, 4WD, 325-375 hp, 6-8 cylinder diesel, 12-18 speed transmission, new, each	400,997.76	419,966.62	427,262.78
Combine, self-prop, diesel, Class 7, 323-374 hp, new, each *	510,945.16	534,701.88	539,382.13
Air Drill, 40-42', 3 compartment tank, no variable rate, new, each *	325,189.93	337,917.92	339,381.10
Sprayer, pull-type, 800-900 gallon tank, 90-100' boom, new, each	76,736.27	90,392.50	87,904.26
Round Baler, pull-type, P.T.O. driven, 5'x6' hard core bale, new, each	64,119.33	66,473.15	65,226.42
Double Disc, heavy-duty tandem, 19-21', 22" blades, new, each	67,652.22	71,636.46	73,226.29
3/4 Ton Truck, V-8, 5.4L or 5.9L engine, 4X4, 4 speed automatic transmission, new, each	52,107.62	54,551.05	54,521.46
Calf-starter Ration, pellets, 13-20%, bagged, 25 kg *	16.37	18.10	18.25
Dairy Supplement, pellets, 32%, bagged, 25 kg *	20.96	22.46	22.35
Feedlot Supplement, pellets, 32%, (excl. Ionophore), bagged, 25 kg *	16.53	17.21	17.45
Hog Grower Ration, pellets, 15-17%, bagged, 25 kg *	15.62	17.02	17.03
Swine Supplement, pellets, 35-40%, bagged, 25 kg *	22.11	22.63	23.13
Broiler Grower Complete Feed, 18-20%, bagged, 25 kg *	16.22	17.43	17.40
Cattle Mineral, salt-free, 18% Phosphorus & 18% Calcium, 20 kg *	29.24	32.97	33.33
Feed Barley, No. 1, non-board, farm gate, bushel	4.70	4.81	4.83
Feed Wheat, No. 1, non-board, farm gate, bushel	5.46	5.42	5.45
Feed Oats, good quality, farm gate, bushel **	2.82	3.17	3.07
Hay, good quality, over 50% Alfalfa, farm gate, ton	152.73	168.64	171.86
Fertilizer, 46-0-0, Urea, bulk, tonne	569.50	536.72	532.20
Fertilizer, 11-51-0, bulk, tonne	764.34	698.85	695.59
Fertilizer, 82-0-0, Anhydrous Ammonia, full service with applicator, bulk, tonne	875.85	888.16	877.58
Refine SG granular, 486 gram *	288.02	300.41	297.10
Assert 300 SC, liquid, 10.8 litre	235.99	244.44	245.69
Roundup WeatherMAX, liquid, 10 litre	83.32	87.86	86.17
Penicillin, Procaine Penicillin G, injectable, short-acting, 300 mg/ml, 250 ml	21.77	26.73	26.45
Vitamin A, D and E, injectable, IU/cc: A:500,000 D:75,000 E:50, 250 ml	35.80	41.86	42.09
Seed, Wheat, Certified No. 1, bulk, 100 kg	58.00	60.64	60.06
Seed, Barley, Certified No. 1, bulk, 100 kg	41.67	43.45	42.96
Seed, Roundup Ready HT Canola, Certified No. 1, treated, bagged, 22.7 kg **	589.24	623.16	616.07
Seed, Liberty Link HT Canola, Certified No. 1, treated, bagged, 22.7 kg **	680.99	716.09	694.31
Purple Gasoline, regular unleaded, marked farm fuel, 100 litres	94.49	91.71	92.63
Diesel Fuel, marked farm fuel, (provincial allowance deducted), 100 litres	100.09	98.59	99.28
Propane, liquefied, bulk, 100 litres	64.01	70.41	71.07
Natural Gas, (excluding service or delivery charge, prov. rebate deducted where applicable), GJ	1.85	3.05	2.91
Electricity, farm use, (excluding service or delivery charge), 100 kwh	6.25	6.69	7.37
Oil, for diesel engines, 15W-40, (environmental tax included), 5 litre *	23.29	24.29	24.35

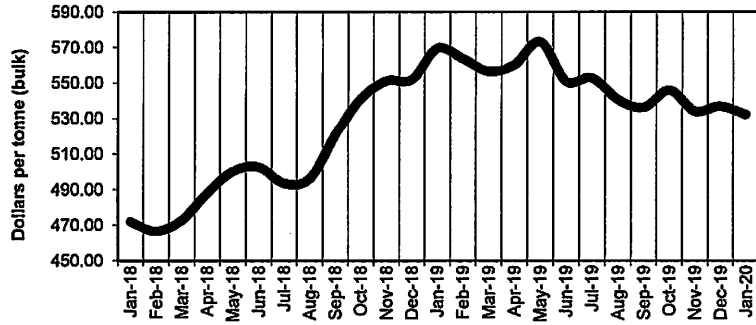
All agricultural inputs were reported to be in good supply for the month of January 2020 with the exception of general farm labour in some areas of the province. The prices reported are simple averages for the province in Canadian Dollars (\$), and are based on a survey conducted in the first week of each month.

* Specification changed as of January 2012 ** New input as of January 2012

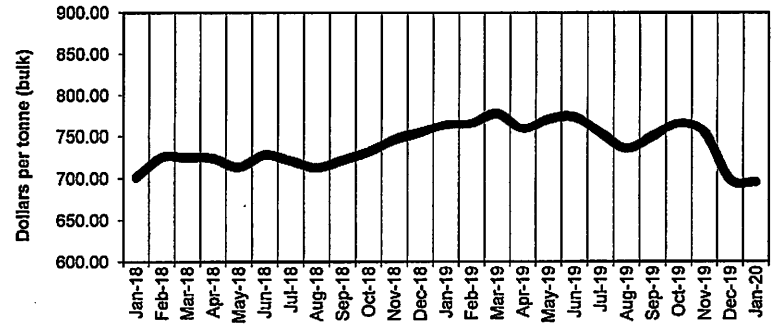
Source: Alberta Agriculture and Forestry, Economics and Competitiveness Branch, Statistics and Data Development Section, in partnership with Alberta Federation of Agriculture. For additional information, please phone: 780-644-1308.

Note to Users: The contents of this document may not be used or reproduced without properly accrediting Alberta Agriculture and Forestry, Economics and Competitiveness Branch, Statistics and Data Development Section.

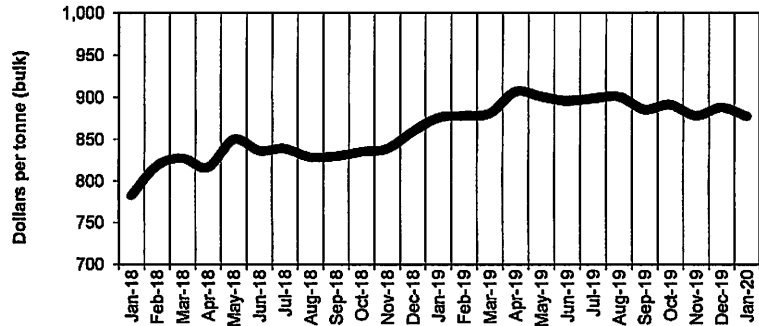
FERTILIZER, 46-0-0
Alberta, Monthly 2018 - 2020



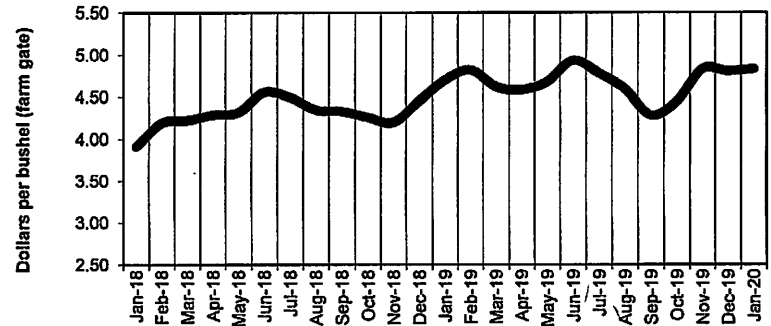
FERTILIZER, 11-51-0
Alberta, Monthly 2018 - 2020



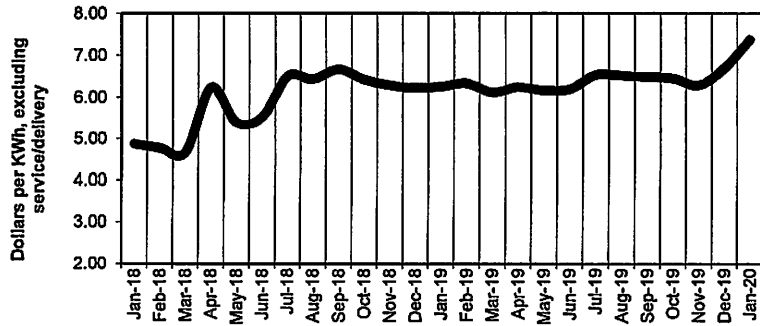
FERTILIZER, 82-0-0
Alberta, Monthly 2018 - 2020



FEED BARLEY, NO. 1, NON-BOARD
Alberta, Monthly 2018 - 2020



ELECTRICITY, FARM USE
Alberta, Monthly 2018 - 2020



FEED WHEAT, NO. 1, NON-BOARD
Alberta, Monthly 2018 - 2020

