





Map 2
Dillberry Lake Provincial Park

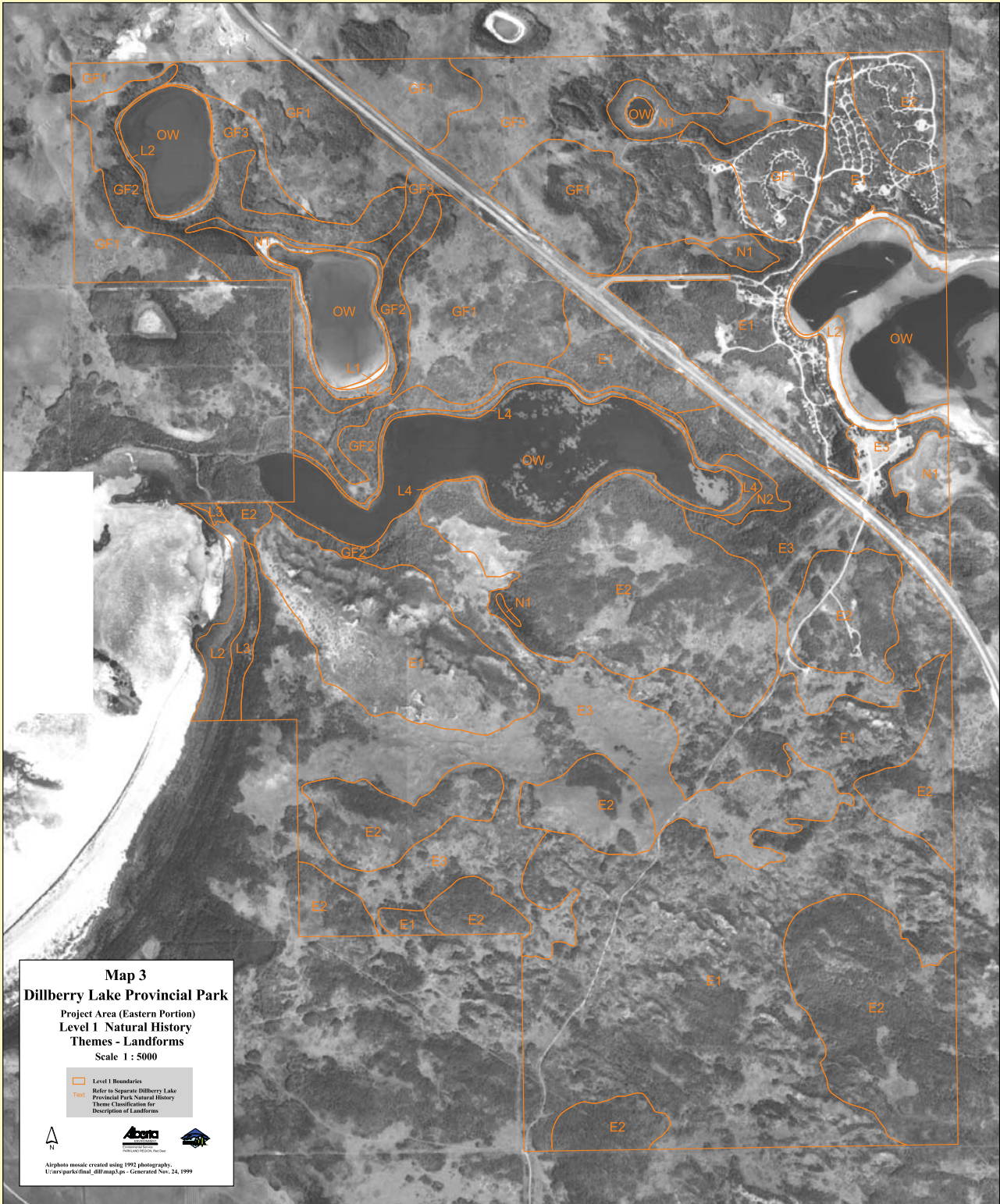
Project Area (Western Portion)
 Level 1 Natural History
 Themes - Landforms

Scale 1 : 5000

- Level 1 Boundaries
- Text Refer to Separate Dillberry Lake Provincial Park Natural History Theme Classification for Description of Landforms



AlphaGIS mosaic created using 1992 photography:
 U:\srv\park\final_dill\map2.jp - Generated Nov. 24, 1999



Map 3
Dillberry Lake Provincial Park

Project Area (Eastern Portion)
 Level 1 Natural History
 Themes - Landforms

Scale 1 : 5000


- Level 1 Boundaries
- Text Refer to Separate Dillberry Lake Provincial Park Natural History Theme Classification for Description of Landforms






Aerial mosaic created using 1992 photography:
 C:\env\park\final_dill\map3.mxd - Generated Nov. 24, 1999



Map 4
Dillberry Lake Provincial Park
 Project Area (Western Portion)
Level 2 Natural History Themes -
Vegetation Types
 Scale 1 : 5000

 Level 2 Boundaries

Airphoto mosaic created using 1992 photography.

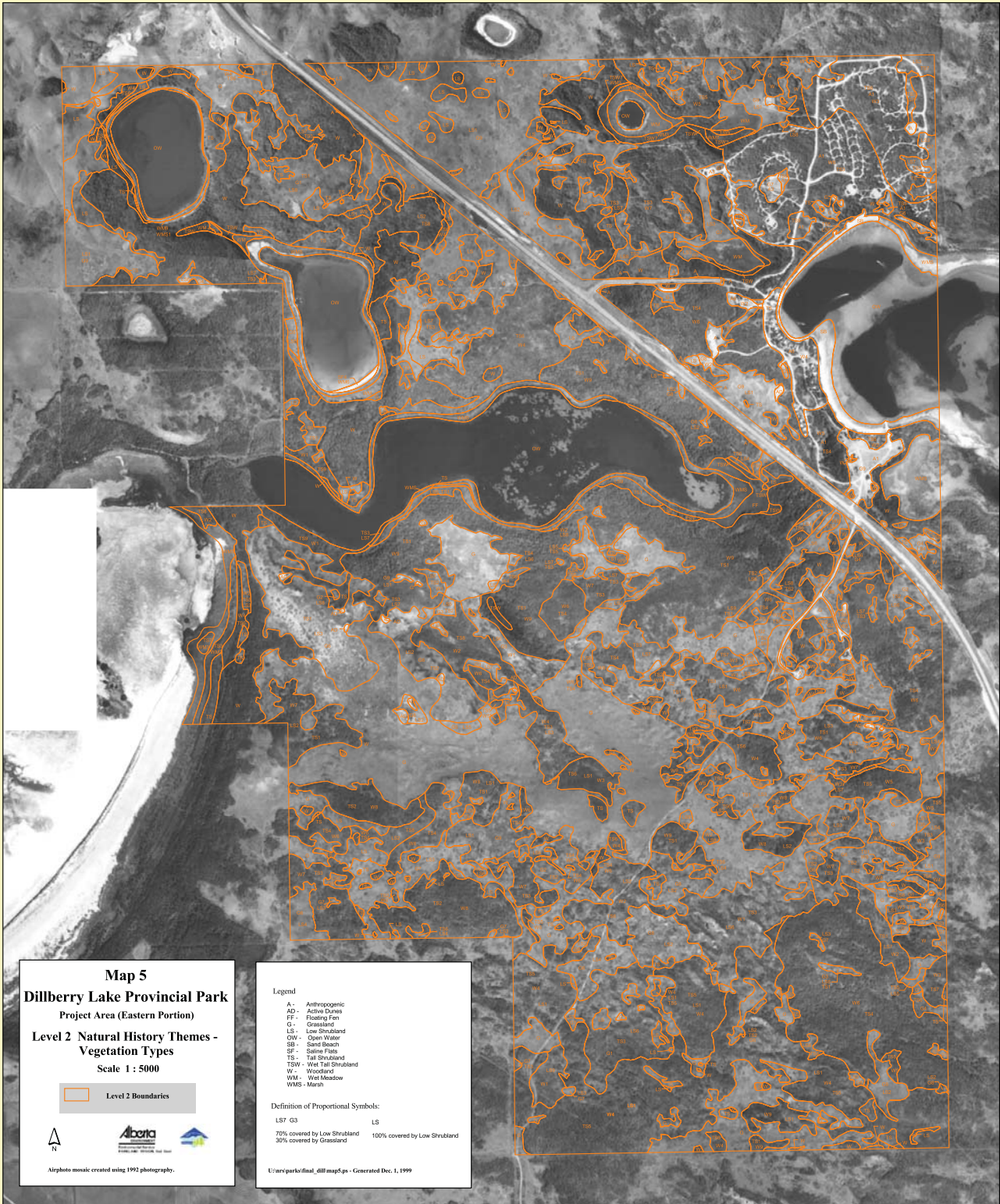
Legend

- A - Anthropogenic
- AD - Active Dunes
- FF - Floating Fen
- G - Grassland
- LS - Low Shrubland
- OW - Open Water
- SB - Sand Beach
- SF - Saline Flats
- TS - Tall Shrubland
- TSH - Wet Tall Shrubland
- W - Woodland
- WM - Wet Meadow
- WMS - Marsh

Definition of Proportional Symbols:




LST G3	LS
70% covered by Low Shrubland	100% covered by Low Shrubland
30% covered by Grassland	

U:\arc\parks\final_dill\map4.ps - Generated Dec. 1, 1999



Map 5
Dillberry Lake Provincial Park
 Project Area (Eastern Portion)
Level 2 Natural History Themes -
Vegetation Types
 Scale 1 : 5000

Level 2 Boundaries

Airphoto mosaic created using 1992 photography.

Legend

- A - Anthropogenic
- AD - Active Dunes
- FF - Floating Fen
- G - Grassland
- LS - Low Shrubland
- OW - Open Water
- SB - Sand Beach
- SF - Saline Flats
- TS - Tall Shrubland
- TSH - Wet Tall Shrubland
- W - Woodland
- WM - Wet Meadow
- WMS - Marsh

Definition of Proportional Symbols:

LST G3	LS
70% covered by Low Shrubland	100% covered by Low Shrubland
30% covered by Grassland	

U:\arc\parks\final_dillmap5.ps - Generated Dec. 1, 1999

DILLBERRY LAKE PROVINCIAL PARK NATURAL HISTORY THEME CLASSIFICATION (describes classification on Maps 2, 3, 4 and 5)

LEVEL 1 - Landforms and Surficial Materials					LEVEL 2		LEVEL 3	Associated Field Sample Sites
Type	Theme	Landforms	Slope	Drainage Class	Broad Vegetation Class and Associated Soil Great Groups		Vegetation Communities (in bold) and Soil Subgroups observed during 1997 Summer Field Season	
SANDY UPLAND	Dune Field	E1 Undulating to ridged stabilized eolian dune field with occasional active sand dunes; includes a high relief hummocky ridged upland with extensive active and semi-active dunes on coarse sandy glaciofluvial ice contact (kame) deposits south of Long Lake.	3 to 45% with occasional dune slopes as high as 75%	Rapid to very rapid	Active Dunes - AD	Active Dunes (Regosols)	Sand Grass - Sand Dropseed - June Grass - Blunt Sedge (Orthic Regosols)	25a, 34, 89
					Grasslands - G	Dwarf Shrublands (Regosols)	Creeping Juniper (Orthic Regosols)	5, 21, 28
						Grasslands (Regosols & Dark Brown Chernozems)	Western Porcupine Grass - June Grass - Slender Wheat Grass / Reindeer Lichen (Orthic Regosols)	4a, 13
							Needle Grass - June Grass - Wheat Grass (Orthic Dark Brown Chernozems)	1
					Shrublands	Low Shrublands - LS		
						Tall Shrublands - TS (Regosols and Dark Brown Chernozems)	Aspen Shrub - Saskatoon - Choke Cherry / Buckbrush (Orthic Regosols)	27
							Aspen Shrub - Saskatoon - Choke Cherry / Rose (Cumulic Regosols & Rego Dark Brown Chernozems)	20, 26
					Woodlands - W	Aspen Woodlands (Dark Brown Chernozems)	Aspen / Aspen Shrub - Choke Cherry - Saskatoon / Creeping Juniper - Common Bearberry (Orthic Dark Brown Chernozems)	90
							Aspen / Aspen Shrub - Saskatoon - Choke Cherry / Buckbrush (Orthic Dark Brown Chernozems & Rego Dark Brown Chernozems)	2, 83
							Aspen / Rose - Buckbrush (Orthic Dark Brown Chernozems & Rego Dark Brown Chernozems)	6, 7
Aspen / Aspen Shrub - Saskatoon - Choke Cherry / Rose (Raspberry) (Orthic Dark Brown Chernozems & Rego Dark Brown Chernozems)	10, 33							
				Anthropogenic - A				

LEVEL 1 - Landforms and Surficial Materials					LEVEL 2		LEVEL 3	Associated Field Sample Sites
Type	Theme	Landforms	Slope	Drainage Class	Broad Vegetation Class and Associated Soil Great Groups		Vegetation Communities (in bold) and Soil Subgroups observed during 1997 Summer Field Season	
	Moderate Relief Sandhills	E2 Undulating to hummocky uplands consisting of eolian sands deposited on coarse textured glaciofluvial ice contact (kame) material with occasional veneers and blankets of sandy eolian (wind modified glaciofluvial material) deposits over medium textured morainal material.	2 to 15%	Rapid to well	Grasslands - G	Dwarf Shrublands (Dark Brown Chernozems)	Creeping Juniper (Orthic Dark Brown Chernozems)	30, 36
						Grasslands (Dark Brown Chernozems)	Needle Grass - June Grass - Wheat Grass (Orthic Dark Brown Chernozems)	29
					Shrublands	Low Shrublands - LS (Dark Brown Chernozems)		
						Tall Shrublands - TS (Dark Brown Chernozems)	Aspen Shrub - Saskatoon - Choke Cherry / Buckbrush (Orthic Dark Brown Chernozems)	8, 15, 31, 86
					Woodlands - W	Aspen Woodlands (Dark Brown Chernozems)	Aspen / Rose - Buckbrush (Orthic Dark Brown Chernozems)	16, 18
							Aspen / Aspen Shrub - Saskatoon - Choke Cherry / Rose (Raspberry) (Orthic Dark Brown Chernozems)	3, 14, 35
	Anthropogenic - A							
	Sandy Plain	E3 Undulating to low relief hummocky eolian landforms consisting of sand with occasional low relief stabilized dune ridges; this terrain is more level than the E1 and E2 classes; some evidence of past cultivation.	2 -12%	Rapid	Grasslands - G	Dwarf Shrubland (Regosols)	Common Bearberry (Orthic Regosols)	12
						Grasslands (Dark Brown Chernozems)	Western Porcupine Grass - June Grass - Slender Wheat Grass / Reindeer Lichen (Orthic Dark Brown Chernozems)	9
							Needle Grass - June Grass - Wheat Grass (Orthic Dark Brown Chernozems)	22
Crested Wheat Grass - Western Wheat Grass (disturbed sites) (Orthic Dark Brown Chernozems)							17, 19	
Shrublands					Low Shrublands - LS			
	Tall Shrublands - TS (Dark Brown Chernozems)	Aspen Shrub / Creeping Juniper / Reindeer Lichen (Orthic Dark Brown Chernozems)	11					

LEVEL 1 - Landforms and Surficial Materials					LEVEL 2		LEVEL 3	Associated Field Sample Sites
Type	Theme	Landforms	Slope	Drainage Class	Broad Vegetation Class and Associated Soil Great Groups		Vegetation Communities (in bold) and Soil Subgroups observed during 1997 Summer Field Season	
					Woodlands – W (cont'd)	Aspen Woodlands; (Dark Brown Chernozems)	Aspen / Aspen Shrub - Saskatoon - Choke Cherry / Creeping Juniper - Common Bearberry (Rego Dark Brown Chernozems)	87
					Anthropogenic - A			
	Kame Moraine	GF1 Undulating to hummocky glaciofluvial uplands overlain with sandy ice contact (kame) deposits and occasional coarse sandy glaciofluvial veneers and blankets over medium textured till; this landform represents some of the highest terrain in the Park.	5 to 20%	Rapid to well	Grasslands - G	Dwarf Shrublands (Dark Brown Chernozems)	Creeping Juniper (Orthic Dark Brown Chernozems)	65, 67, 71, 77
						Grasslands (Dark Brown Chernozems)	Needle and Thread Grass - June Grass - Slender Wheat Grass - Blunt Sedge (Orthic Dark Brown Chernozems)	44, 46, 48, 54, 55
					Shrublands	Low Shrublands - LS (Dark Brown Chernozems)	Buckbrush (Orthic Dark Brown Chernozems)	39
							Silverberry (Orthic Dark Brown Chernozems)	69
							Rose; (Rego Dark Brown Chernozems)	47
						Tall Shrublands - TS (Dark Brown Chernozems & Regosols)	Aspen Shrub / Creeping Juniper / Reindeer Lichen (Orthic Dark Brown Chernozems)	58
							Aspen Shrub - Saskatoon - Choke Cherry / Buckbrush (Orthic Dark Brown Chernozems)	72
							Aspen Shrub - Saskatoon - Choke Cherry / Rose (Orthic Regosols)	42
						Caragana / Smooth Brome (Disturbance community) (Orthic Dark Brown Chernozems)	79	
					Woodlands – W	Aspen Woodlands (Dark Brown Chernozems & Cumulic Regosols)	Aspen / Aspen Shrub - Saskatoon - Choke Cherry / Creeping Juniper - Common Bearberry (Orthic Dark Brown Chernozems)	59
							Aspen / Rose - Buckbrush (Orthic Dark Brown Chernozems)	53

LEVEL 1 - Landforms and Surficial Materials					LEVEL 2		LEVEL 3	Associated Field Sample Sites		
Type	Theme	Landforms	Slope	Drainage Class	Broad Vegetation Class and Associated Soil Great Groups		Vegetation Communities (in bold) and Soil Subgroups observed during 1997 Summer Field Season			
					Woodlands		Aspen / Aspen Shrub - Saskatoon - Choke Cherry / Rose (Raspberry) (Orthic Dark Brown Chernozems)	82		
							Aspen / Rose - Raspberry (Gleyed Cumulic Regosols)	45		
					Anthropogenic - A					
		GF2 Moderately to strongly sloping terrain underlain with coarse sandy glaciofluvial ice contact (kame) deposits; this class has the steepest slopes of all the GF classes.	8 to 65%	Rapid	Grasslands - G	Dwarf Shrubland				
						Grasslands (Dark Brown Chernozems)	Pasture Sagewort / June Grass - Blunt Sedge (Rego Dark Brown Chernozems)	66		
						Shrublands	Low Shrublands - LS			
							Tall Shrublands - TS	Aspen Shrub - Saskatoon - Choke Cherry / Buckbrush (Orthic Dark Brown Chernozems)	70	
							Woodlands - W	Aspen Woodlands (Dark Brown Chernozems & Cumulic Regosols)	Aspen / Aspen Shrub - Saskatoon - Choke Cherry / Buckbrush (Orthic Dark Brown Chernozems)	62
						Choke Cherry / Rose (Raspberry) (Cumulic Regosols & Orthic Dark Brown Chernozems)	49, 63			
		GF3 Undulating low relief glaciofluvial lowlands underlain by coarse textured sandy ice contact (kame) deposits; located east of Highway 17 along the northern boundary of the Park.	0 to 10%	Rapid	Grasslands - G	Dwarf Shrublands (Dark Brown Chernozems)	Creeping Juniper (Orthic Dark Brown Chernozems)	78		
							Grasslands			
							Shrublands	Low Shrublands - LS (Dark Brown Chernozems)	Buckbrush (Rego Dark Brown Chernozems)	73
									Aspen Shrub / Creeping Juniper (Orthic Dark Brown Chernozems)	75
								Tall Shrublands - TS		
							Woodlands - W	Aspen Woodlands (Dark Brown Chernozems)	Aspen / Aspen Shrub - Saskatoon - Choke Cherry / Buckbrush (Orthic Dark Brown Chernozems)	68
					Anthropogenic - A					

LEVEL 1 - Landforms and Surficial Materials					LEVEL 2		LEVEL 3	Associated Field Sample Sites	
Type	Theme	Landforms	Slope	Drainage Class	Broad Vegetation Class and Associated Soil Great Groups		Vegetation Communities (in bold) and Soil Subgroups observed during 1997 Summer Field Season		
		GF4 Level to undulating coarse gravelly glaciofluvial (kame) deposits south of Killarney Lake; very good source of industrial aggregate as evidenced by an active gravel pit.	0 to 15%	Rapid	Grasslands - G	Grasslands (Dark Brown Chernozems)	Pasture Sagewort - June Grass - Blunt Sedge (Orthic Dark Brown Chernozems)	37	
					Shrublands	Low Shrublands - LS			
						Tall Shrublands - TS			
					Woodlands - W	Woodlands			
		Anthropogenic - A							
	Lacustrine	L3 Level to gently undulating higher sandy beach terraces often located between a lower L2 beach terrace and slopes descending from eolian and glaciofluvial uplands.	0 to 5%	Well to imperfect	Shrublands	Low Shrublands - LS			
						Tall Shrublands - TS			
					Woodlands - W	Aspen Woodlands (Humic Regosols)	Aspen / Aspen Shrubs - Saskatoon - Choke Cherry / Rose (Raspberry) (Gleyed Humic Regosols)	56	
Balsam Poplar Woodlands (Regosols)						Balsam Poplar / Willow (Water Birch) (Gleyed Regosols)	24		
NON SANDY UPLAND	Ground Moraine	M1 Level to gently undulating morainal depression in a small area located south of Killarney Lake in the western portion of the project area; morainal deposit textures range from medium to fine.	0 to 4%	Imperfect	Grasslands - G	Grasslands (Black Chernozems)	Green Needle Grass - Sandberg Bluegrass - Blunt Sedge (Gleyed Solonchic Black Chernozems)	43	
	Glacial Lake Bed	GL1 Level to undulating lowland south of Killarney Lake overlain by medium textured glaciolacustrine veneers and blankets over medium textured morainal deposits.	5 to 8%	Moderately well	Shrublands	Low Shrublands - LS			
						Tall Shrublands - TS			
					Woodlands - W	Aspen Woodlands (Black Chernozems)	Aspen / Rose - Raspberry (Orthic Black Chernozems)	38	
WETLAND	Lacustrine	L1 Level recently exposed coarse to fine textured, saline lake bottom sediments in a zone between open water in the	0 - 2 %	Poor	Marsh - WMS	Saline Shallow Marsh (Gleysols & Regosols)	Three-Square Rush - Foxtail Barley - Nuttall's Salt-Meadow Grass (Rego Gleysols & Gleyed Regosols)	40b, 52	

LEVEL 1 - Landforms and Surficial Materials					LEVEL 2		LEVEL 3	Associated Field Sample Sites
Type	Theme	Landforms	Slope	Drainage Class	Broad Vegetation Class and Associated Soil Great Groups		Vegetation Communities (in bold) and Soil Subgroups observed during 1997 Summer Field Season	
		centre of Killarney, Leane and Speedy Lakes and perimeter beach terraces.			Wet Meadows - WM	Wet Meadows (Gleysols)	Sow-thistle/Three-Square Rush - Foxtail Barley (Rego Gleysols)	60
					Saline Flats - SF	Saline Flats (Gleysols)	Non-vegetated (Rego Gleysols)	40a
		L2 Level to gently undulating lower sandy beach terraces along the perimeter of lakes such as Killarney, Leane, Dillberry, Ranger and Speedy Lakes; some evidence of wind modification of these beach deposits around larger lakes; this predominantly wetland landform includes a narrow band of drier sites adjacent to the higher beach terrace represented by L3; these drier sites were included as part of the L2 because they were small and scattered occurrences which are not easily mapped.	0 - 5%	Predominantly poorly drained with inclusions of imperfectly to well drained sites in a transition zone with the higher L3 beach terrace.	Marsh - WMS	Saline Shallow Marsh (Gleysols)	Three-Square Rush - Foxtail Barley - Nuttall's Salt-Meadow Grass (Rego Gleysols)	57
						Saline Deep Marsh (Gleysols)	Great Bulrush / Liverworts (Rego Gleysols)	23
					Wet Meadows - WM	Wet Meadows (Regosols & Gleysols)	Northern Reed Grass - Wire Rush (Orthic Regosols. & Rego Gleysols)	51, 61
							Sow-thistle / Three-square Rush - Foxtail Barley (Orthic Regosols)	80
					Saline Flats - SF	Saline Flats (Gleysols)	Non-vegetated (Rego Gleysols)	
					Sandy Beach - SB			
					Shrublands	Low Shrublands - LS (Regosols)	Silverberry Meadow (Orthic Regosols & Gleyed Regosols)	41, 81
							Tall Shrublands - TS	
					Woodlands - W	Balsam Poplar Woodlands (Gleysols)	Balsam Poplar / Willow (Water Birch) (Rego Gleysols)	50
					Grasslands - G			
		L4 A band of coarse to fine textured lacustrine sediments along the shoreline of Long Lake; lake sediments are at or below the lake water level	0 to 1%	Very poor	Marsh - WMS	Fresh Deep Marsh (Gleysols)	Common Cattail (Rego Gleysols)	observed around Long Lake
						Fresh Shallow Marsh; (Gleysols)		

LEVEL 1 - Landforms and Surficial Materials					LEVEL 2		LEVEL 3	Associated Field Sample Sites
Type	Theme	Landforms	Slope	Drainage Class	Broad Vegetation Class and Associated Soil Great Groups		Vegetation Communities (in bold) and Soil Subgroups observed during 1997 Summer Field Season	
	Organic	N1 Level saline to non-saline organic deposits; mostly humic in composition	0 to 1%	Poor to very poor	Wet Meadows - WM	Wet Meadows (Humisols)	Sow-thistle - Canada Goldenrod / Northern Reed Grass - Spangletop (Typic Humisols)	64a, 74, 76
					Marsh - WMS	Fresh Deep Marsh (Humisols)	Common Bulrush (Typic Humisols & Terric Humisols)	64, 88
					Shrublands	Wet Tall Shrublands - TSW		
		N2 Level floating fen along the shoreline in the extreme eastern portion of Long Lake; includes narrow, scattered patches of N1 organic veneers and blankets over coarse sandy material in a transition zone with eolian uplands; N1 areas were too small to map out separately and were included as part of N2.	0%	Very poor	Floating Fen - FF	Floating Shrubby Fen (Humisols)	Dwarf Birch / Water Sedge / Brown Moss (Hydric Humisols)	84
					Shrublands	Wet Tall Shrublands - TSW	Red-osier Dogwood - Willow (Rego Gleysols - peaty phase)	85
	Open Water	OW Open Water	0%		Fresh Water	Fresh to Slightly Saline Water	Dillberry Lake, Long Lake, Ranger Lake, Speedy Lake	
Saline Water					Saline Water	Leane Lake, Killarney Lake		