	<b>BE COURTEOUS MERGE TRAFFIC AHEAD SIGN</b>		Issued: NOV 2015
			Revised: JUL 2018
			Page 1 of 2
<b>RECOMMENDED PRACTICES</b>	PART	HIGHWAY SIGNS	
	SECTION	WARNING SIGNS	
	SUB-SECTION		

## General

Median acceleration lanes which are auxiliary lanes provided within the median, are increasingly used at intersections on high-speed divided highways. In order to increase the safety and the effectiveness of using median acceleration lanes, proper driver education and additional signage may be necessary to help facilitate proper usage.

## Standard

In cases where it may be difficult for the left turn vehicles to merge into the through lanes from the median acceleration lane, extended permissible merging opportunities are provided. The Be Courteous Merge Traffic Ahead sign provides a warning to motorists in the through lanes, and advises motorists to be aware of the additional merging opportunity from the median acceleration lane, and to be courteous to help the left turn vehicles to merge. The sign consists of black text on a yellow background.

The standard size of a Be Courteous Merge Traffic Ahead sign is 2440mm x2140 mm.



<b>WA-40</b>	<b>2440mm x2140 mm</b>	
<b>Colour</b>	Symbol and Border Background	Black Yellow
<b>Sheeting</b>	ASTM D4956 Type IX or XI	

## Guidelines for Use

The Be Courteous Merge Traffic Ahead sign (WA-40) should be installed at the intersection where a median acceleration lane exists, and there is extended permissible merging opportunity allocated to help the left turn vehicles merging into the through lanes.

## Guidelines for Placement

The Be Courteous Merge Traffic Ahead sign (WA-40) should be installed on the left side of the road where the merging traffic will be encountered, approximately 100 m downstream beyond the intersection. The exact location should be based on other signs that are installed for the intersection.

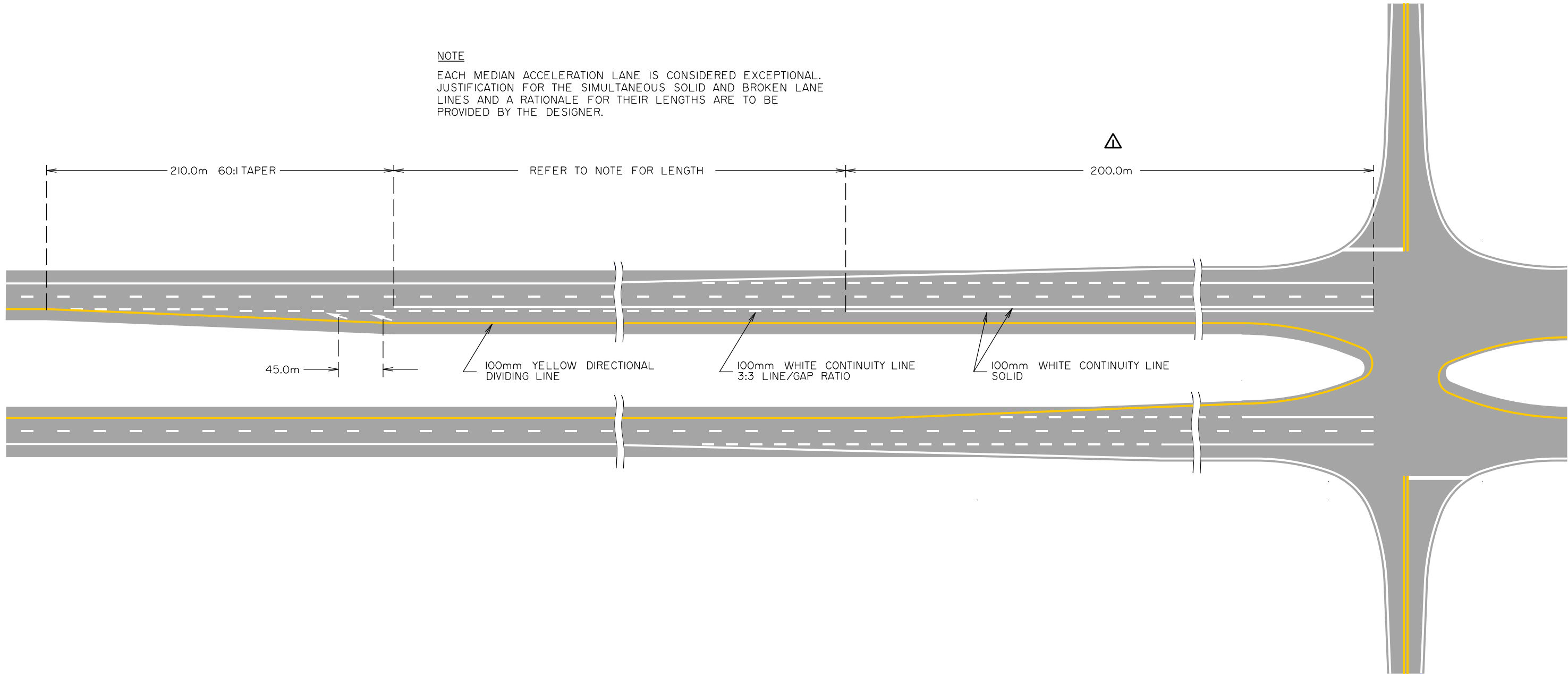
Sign placement should be in accordance with the Recommended Practices Placement of Signs guideline.




	<b>BE COURTEOUS MERGE TRAFFIC AHEAD SIGN</b>	<i>Issued: NOV 2015</i>
		<i>Revised: JUL 2018</i>
		<i>Page 2 of 2</i>

## References to Standards

<i>Manual of Uniform Traffic Control Devices for Canada (MUTCD)</i>	A3.3.4 Merge Sign
<i>Recommended Practices Section: General</i>	Placement of Signs
<i>Highway Pavement Marking Guide</i>	See attached Typical Pavement Markings Figure TCS-C-510.5
<i>Typical Sign Patterns</i>	See attached Sign Pattern WA-40

NOTE  
EACH MEDIAN ACCELERATION LANE IS CONSIDERED EXCEPTIONAL.  
JUSTIFICATION FOR THE SIMULTANEOUS SOLID AND BROKEN LANE  
LINES AND A RATIONALE FOR THEIR LENGTHS ARE TO BE  
PROVIDED BY THE DESIGNER.



	.	.	.
	Length changed from 300m to 200m	E.Y.	Jul/18
No.	DESCRIPTION	BY	DATE
		FIGURE TCS-C-510.5	
		Date: OCTOBER 2015	
TYPICAL PAVEMENT MARKINGS ACCELERATION LANE ON FOUR-LANE DIVIDED HIGHWAY			
Prepared By: S.L.	Checked By: E.Y.	Scale: N.T.S.	Section C5

**BE COURTEOUS  
MERGE TRAFFIC AHEAD**

**WA-40**

LETTERING: 178 mm SERIES Em



LETTERING: 178 mm SERIES C

SECTION REFERENCE		
DIMENSIONS (mm)		2440 X 2140
ENLARGEMENT FACTOR		15 X
COLOUR		
BACKGROUND	BORDER	MESSAGE / SYMBOL
YELLOW	BLACK	BLACK

