

Moisture Situation Update – March 18, 2013

Synopsis:

Over the past several days, significant accumulations of snowfall have occurred over most areas north of Red Deer as well as throughout most of the foothills and throughout the Mountains. Across the Agricultural areas, the greatest accumulations were recorded in the Whitecourt area with some stations reporting upwards of 35 mm. That's roughly 60 cm of fresh powdery snow. Areas south of Red Deer also received some precipitation, but accumulations were generally light throughout the agricultural areas with less than 5 mm being recorded in most locals.

Precipitation accumulations over the past 7-days as of March 18, 2013 (see map)

- The greatest accumulations in the agricultural areas covered a wide swath stretching from Edmonton to Cleardale (northwest Peace Region), with accumulations ranging from 20 to 40 mm.
- In the mountain parks several high mountain stations reported upwards of 75 mm with Sunshine Village seeing the most at 74.3 mm. That's close to a meter of new snow.

March accumulations 1 in 20 year highs (see map)

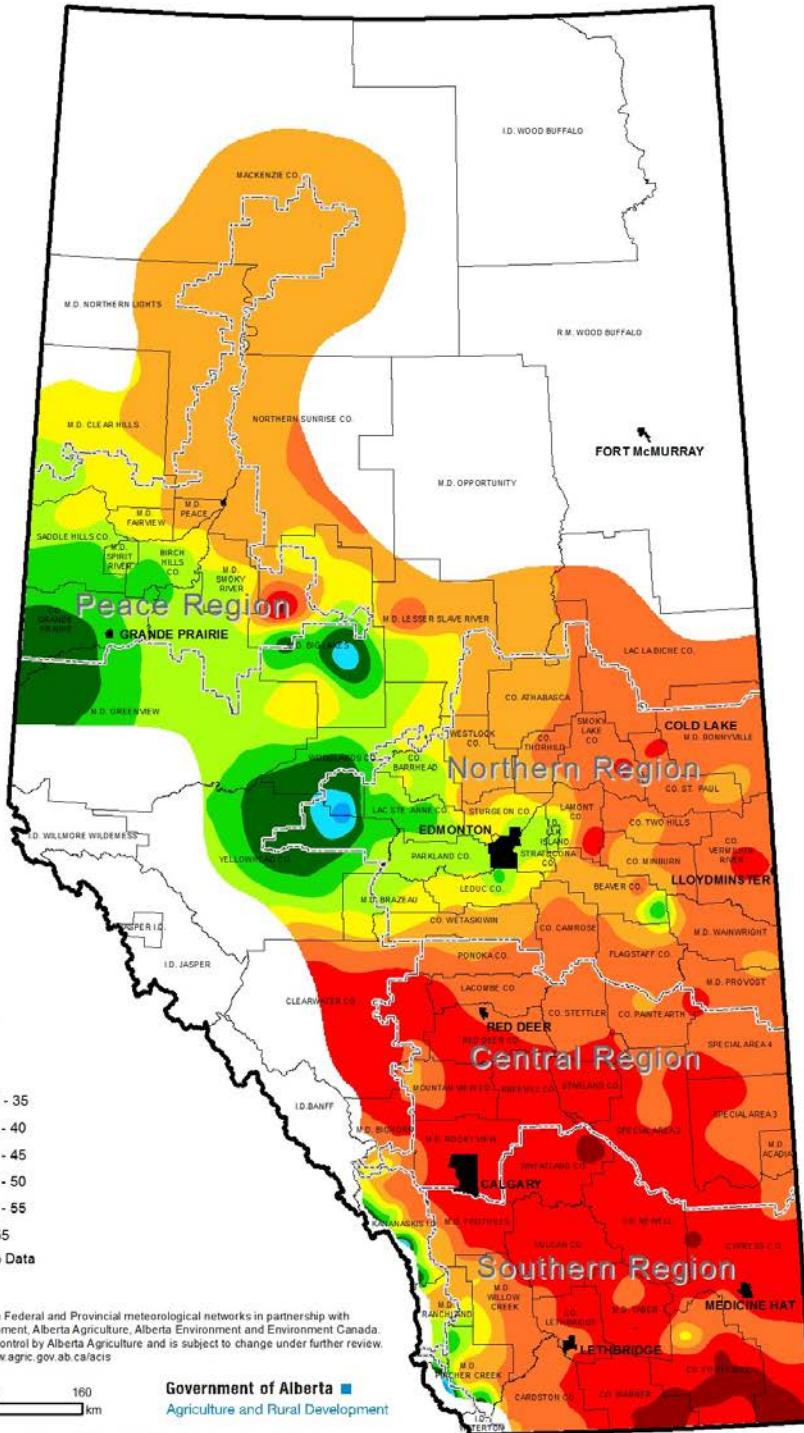
- In the agricultural areas of the province, on average about once in 20 years a wet march will bring anywhere from 30 to 40 mm along the east half of the province to upwards of 50 to 60 mm westward towards the foothills. March is not over yet, and more snows are predicted to fall this week. Many areas between Edmonton and the southern Peace region are approaching 1 in 20 year highs so far. This is great news for improving spring soil moisture reserves, but will make winter farming operations difficult over the next week or two.

Additional Maps can be found at www.agriculture.alberta.ca/maps

Near-real-time hourly station data can be viewed/downloaded at www.agriculture.alberta.ca/stations Note: Data has about a two hour lag and is displayed in MST (add one hour for daylight savings time)

Ralph Wright

Agrometeorology Applications and Modelling Section, ARD



Precipitation Received During the Past 7.29-days

March 11, 2013 to
March 18, 2013 approx. 0700 hrs

Precipitation (mm)

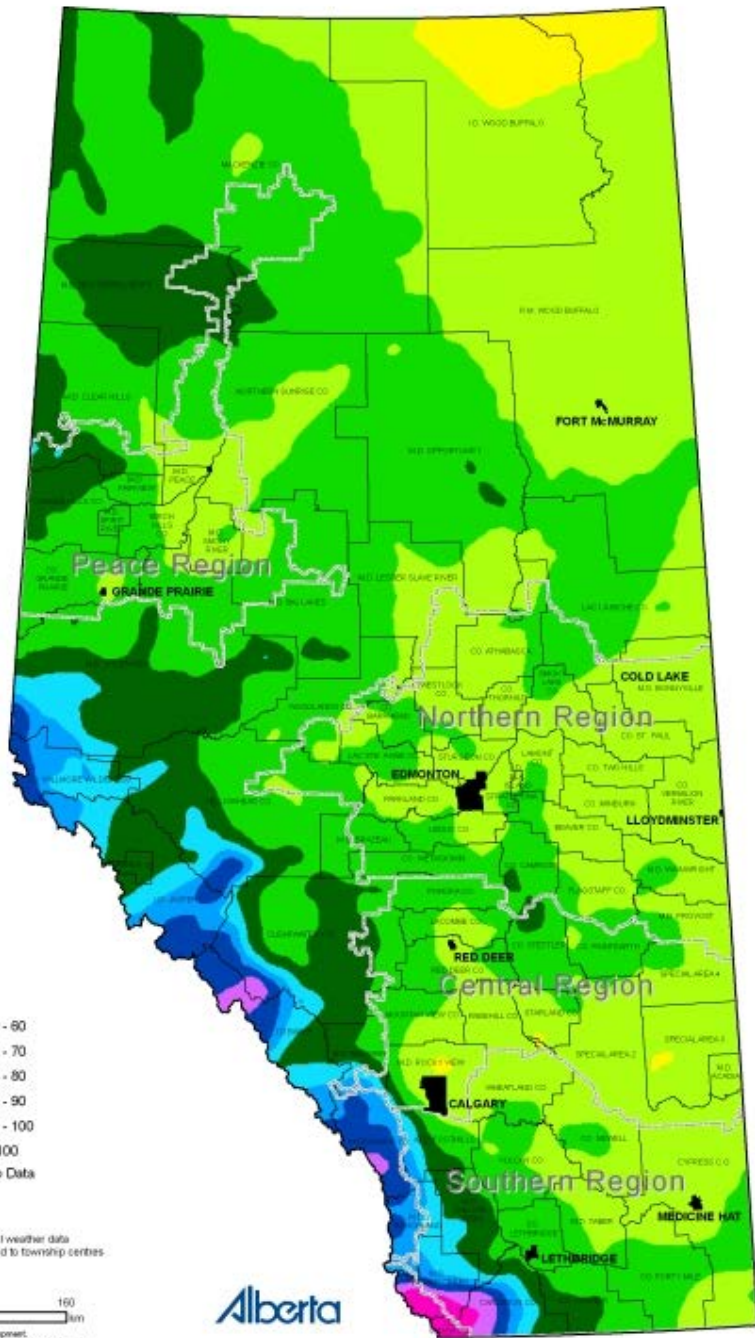
	< 1		30 - 35
	1 - 5		35 - 40
	5 - 10		40 - 45
	10 - 15		45 - 50
	15 - 20		50 - 55
	20 - 25		> 55
	25 - 30		No Data

Near-real-time data was collected from Federal and Provincial meteorological networks in partnership with Alberta Sustainable Resource Development, Alberta Agriculture, Alberta Environment and Environment Canada. Data has passed preliminary quality control by Alberta Agriculture and is subject to change under further review. Live station data can be viewed at www.agric.gov.ab.ca/acis



Government of Alberta
Agriculture and Rural Development

Compiled by Alberta Agriculture and Rural Development, Environmental Stewardship Division, Technology and Innovation Branch
Created on March 16, 2013



**March
Precipitation
Percentile (95%)**

Accumulations more than this
expected once in 20 years

Precipitation (mm)

0 - 5	50 - 60
5 - 10	60 - 70
10 - 15	70 - 80
15 - 20	80 - 90
20 - 30	90 - 100
30 - 40	> 100
40 - 50	No Data

Monthly totals were based on historical weather data
from the 1961-2005 period, interpolated to township centres
using AbClim-1.1.



Compiled by Alberta Agriculture and Rural Development,
Environmental Stewardship Division, Technology and Innovation Branch
Created on June 26, 2009

Alberta