

# Edson and Hinton Areas

On the Yellowhead Highway midway between Edmonton and Jasper National Park, **Edson** (www.townofedson.ca 780-723-4918) sits on the edge of foothills in the McLeod River Valley. Within the town of 8,400 people, an extensive gravel trail system winds through creek valleys and parks, with a growing section being paved for walkers, cyclists and in-line skaters.

Fifteen kilometres northwest of Edson, the **Hornbeck Trails** are a 37 km system of routes for hikers, cyclists and equestrians in a setting of mixed wood forests interspersed with muskeg. The area is rich in forest birds such as owls and woodpeckers, and lucky trail users might spy wolves, moose, elk or lynx. In winter, the Muskeg Flyers Nordic Ski Club maintains 30 km of groomed, signed cross country ski trails here, in loops ranging from 1 to 15 km, along with a staging area and warm up hut. The club hosts a popular loop each winter.

Farther north of town, the **Silver Summit Ski Hill** (www.skisilversummit.ca) can also be reached via the **Silver Summit Trail**, a 50 km Sno Seekers Snowmobile Club route from the Little Sundance Creek staging area, 20 km west of Edson. A shorter version of this snowmobile trail can be accessed from the **Grande Prairie Trail**, a route that starts from a staging area 13 km north of town. From Silver Summit, a 110 km snowmobile trail heads northeast to Whitecourt.

**Sundance Provincial Park**, 60 km northwest of Edson on partially gravel and sometimes rough roads, is one of the most scenic areas in the lower foothills, preserving a diverse landscape of old growth spruce and fir forests, spectacular sandstone cliffs, steep glacial carved valleys and wetlands. The **Sundance Hoodoos**, among the most unique sandstone sculptures in Alberta, can be viewed by hiking the 8 km (one way) **Wild Sculpture Trail**, which winds through a forested valley and past unusual plant communities and three lakes. The park also contains **Emerson Lakes**, a chain of five beautiful, clear lakes. Some 7 km of hiking trails circle three of the lakes and offer a number of scenic viewpoints. Visitors can look for such wildlife species as moose, deer, elk, bear and cougar. Sundance also features equestrian trails and off highway vehicle access along two designated corridors.

With a population of 10,000 people, **Hinton** (www.hinton.ca 877-446-8666) is the Gateway to the Rockies, with a multitude of trails within and just outside its boundaries. In town, more than 20 km of walking and cycling trails lead through lush forests, past creeks and lakes and to viewpoints of mountains. The 3 km **Beaver Boardwalk** (www.beaverboardwalk.ca), the longest of its kind in Canada, meanders through beaver habitat and offers great bird and wildlife watching.

The 15 hectare **Hinton Bike Park** (the largest in Canada; http://sites.google.com/site/hintonbikepark/) provides a link to multiple bike trails, each with a technical rating. Hinton is also the starting point for the annual MS Mountain Bike Tour, a highly scenic two day fundraising cycle event. Just northwest of town, the 12 km multi use network of **Athabasca Ranch Trails** provide scenic views of the Athabasca River and open onto grassy meadows.

**William A. Switzer Provincial Park** (www.tpr.alberta.ca/parks/switzer/index.asp) is set in rolling foothills 25 km northwest of Hinton. A park highlight is the **Athabasca Lookout Nordic Centre**, one of the finest cross country ski facilities in Alberta, with 35 km of hilly, forested trails and including a biathlon range, warm up shelters and a natural luge track. In summer, these trails are used for biking and hiking.

A variety of park trails are situated on the east side of Highway 40. From the Gregg Lake Campground, visitors can hike or bike the 4 km **Gregg Lake** loop through rolling mixed forest or take the 3.5 km **Kettle** loop and walk on a glacial esker and view a kettle lake. On the nearby **Beaver Ranch Trail** (1.5 km loop), they can discover a historic beaver ranching site and hike along Graveyard Lake to a viewpoint overlooking a wetland. The 2.5 km **Friendly Vistas Trail** (wheelchair accessible) follows the shores of Jarvis Lake.

Twenty four kilometres north of Hinton, the **Spruce Management Trails** feature 18 km of looped cross country ski trails on a height of land overlooking two valleys. The ski trails are maintained by Friends of Camp 29, named in honour of an old logging camp that operated here. In summer, the trails are used by hikers and mountain bikers.

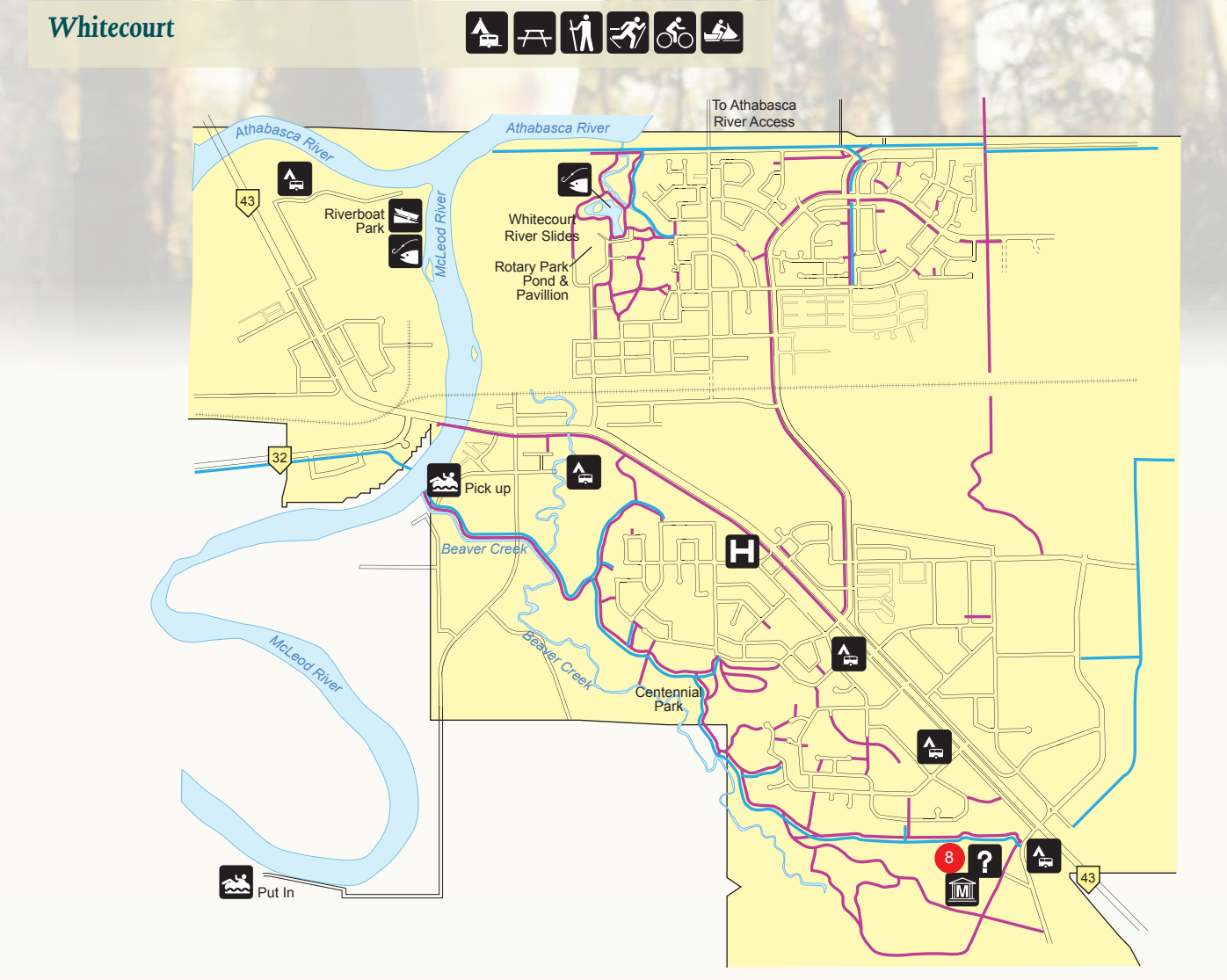
Eighteen kilometres northeast of Hinton, **Canyon Creek Trail** is a lovely family walk. The 3 km loop crosses the canyon on two footbridges and offers mountain views, wildlife watching and picnic sites. A short side trail leads to the Athabasca River.



# Whitecourt, Woodlands County and Fox Creek Area

Located at the junction of the Athabasca and McLeod Rivers, **Whitecourt** (www.whitecourt.ca 800-313-7383) is a burgeoning community of 10,000 residents. More than 30 km of paved pathways and gravel trails meander through town, many of them maintained year round. They range from hilltop rainbows to valley bottom walks where many types of birds can be seen and heard, and link green spaces such as the Centennial Park and Rotary Park, which features a fishing pond, river slides, splash park, playground and picnic areas.

Whitecourt bills itself the Snowmobile Capital of Alberta. In Woodlands County (www.woodlands.ab.ca 888-870-6315), 14 km northwest of Whitecourt, the Eagle River Snowmobile Area features 465 km of maintained trails, a staging/warm up area and a connection with the Trans-Canadian Snowmobile Trail and the 350 km Golden Triangle (www.thegoldentriangle.ca), which links Whitecourt, Swan Hills and Fox Creek. A separate, 110 km trail follows the McLeod River west and then swings south to the Silver Summit Ski Hill and, beyond, to near Edson. From January to March, the Whitecourt Trailblazers (http://whitecourtrailblazers.ca) offer newcomers and visitors Sunday rides with club members and on the February Family Day weekend host the Whitecourt Trailblazers Poker Rally.



During the summer Whitecourt hosts national and international jet boat races on the Athabasca River. The McLeod River has put in and take out access points for river users who enjoy a slow tube ride down the river.

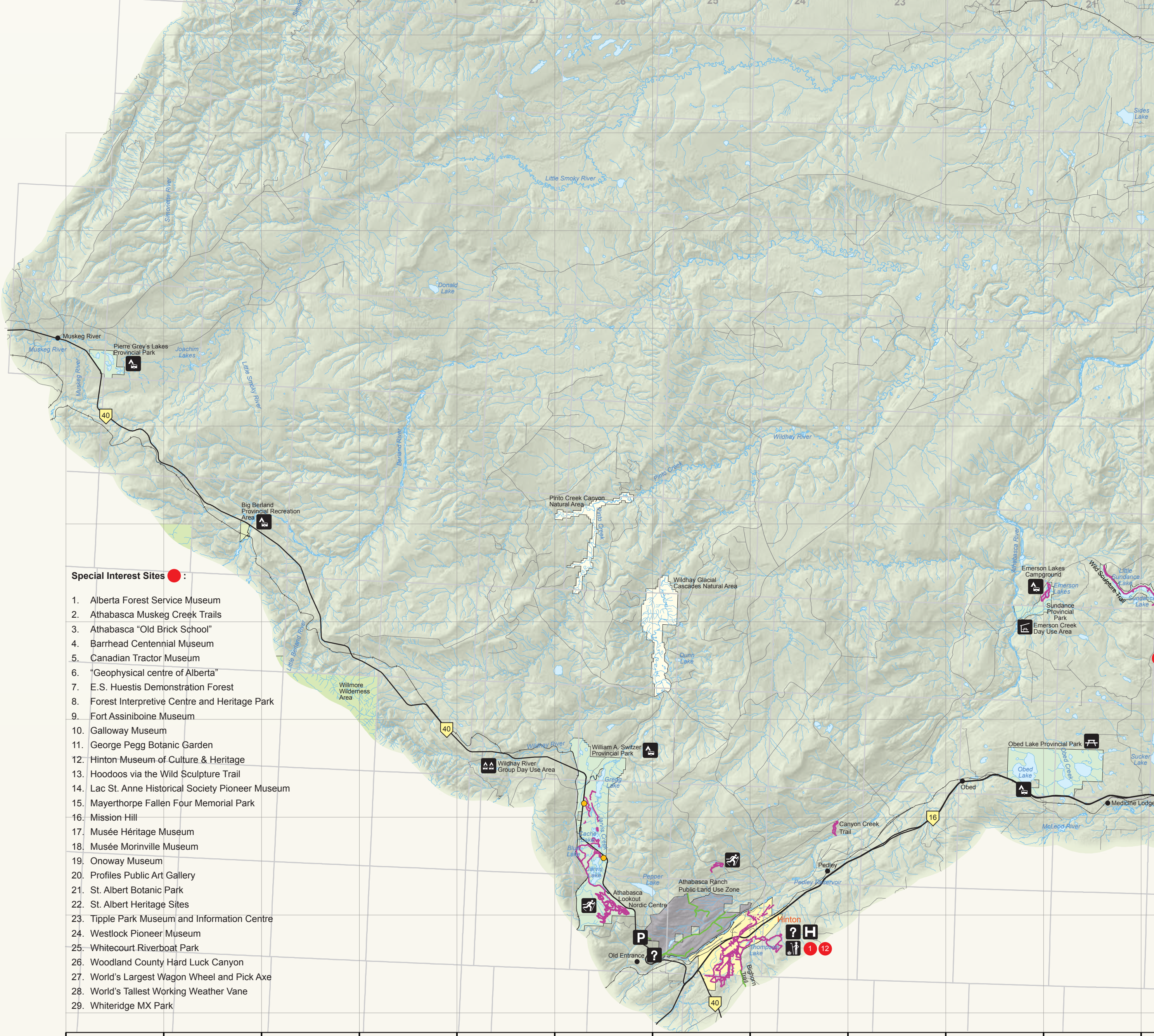
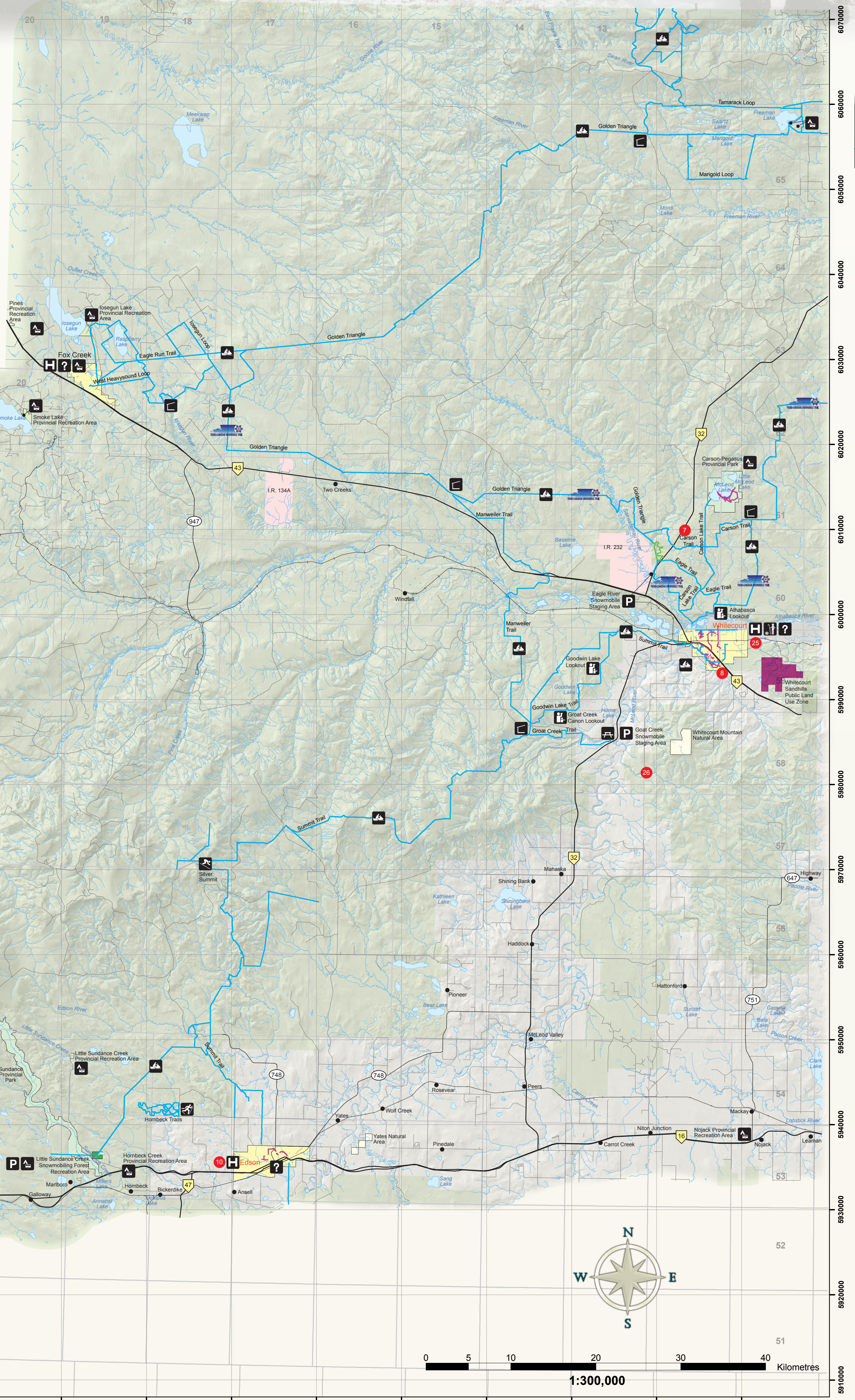
The Whitecourt Forest Interpretive Centre (1) was created to show the history and importance of the logging industry to development of Whitecourt and the surrounding area. The Forest Interpretive Centre is also a year round information centre.

Thirteen kilometres north of Whitecourt along Highway 32, the **Eric S. Huestis Demonstration Forest** (2) provides information on a sustainable forest for wildlife habitat, recreation and resource development. The facility includes a self-guided driving tour, an interpretive hiking trail and an arboretum.

Twenty kilometres southwest of Whitecourt, hiking and walking trails offer breathtaking views of the unique sandstone walls of **Hard Luck Canyon** (3). A viewing bridge straddles the falls, which typically run in the spring. Visitors can follow a series of stairs and paths to the canyon floor to access Hard Luck Creek. The **Whitecourt Sandhills Public Land Use Zone**, southeast of Whitecourt, provides access for non-motorized activities such as hiking, cross country skiing and horseback riding.

Northwest of Whitecourt, **Fox Creek** (www.foxcreek.ca 780-622-3896) is a town of 2,300 in a boreal forest wilderness setting noted for its hunting and lake fishing. Within town, the 8 km **Don Nicholson Walking Trail** is a scenic stroll following Fox Creek between the RV campground and the Tourist Information Centre. Just north of Fox Creek, popular **Iosegun Lake** features sport fishing, a beach, a short hiking trail along the lake's edge and a longer route to Inlet Creek. The lake also has a staging area providing access to snowmobile trails outside Iosegun Lake Provincial Recreation Area.

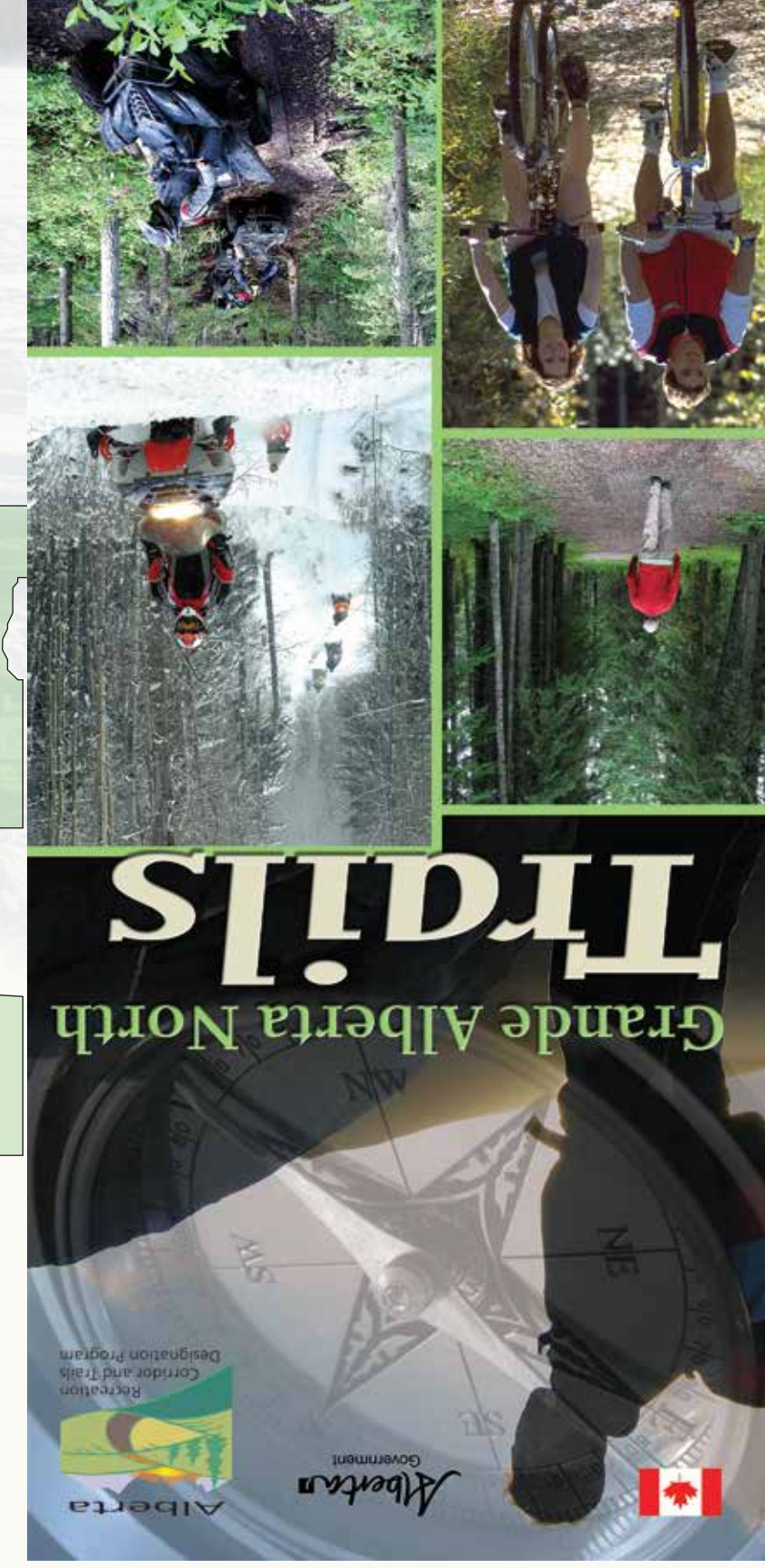
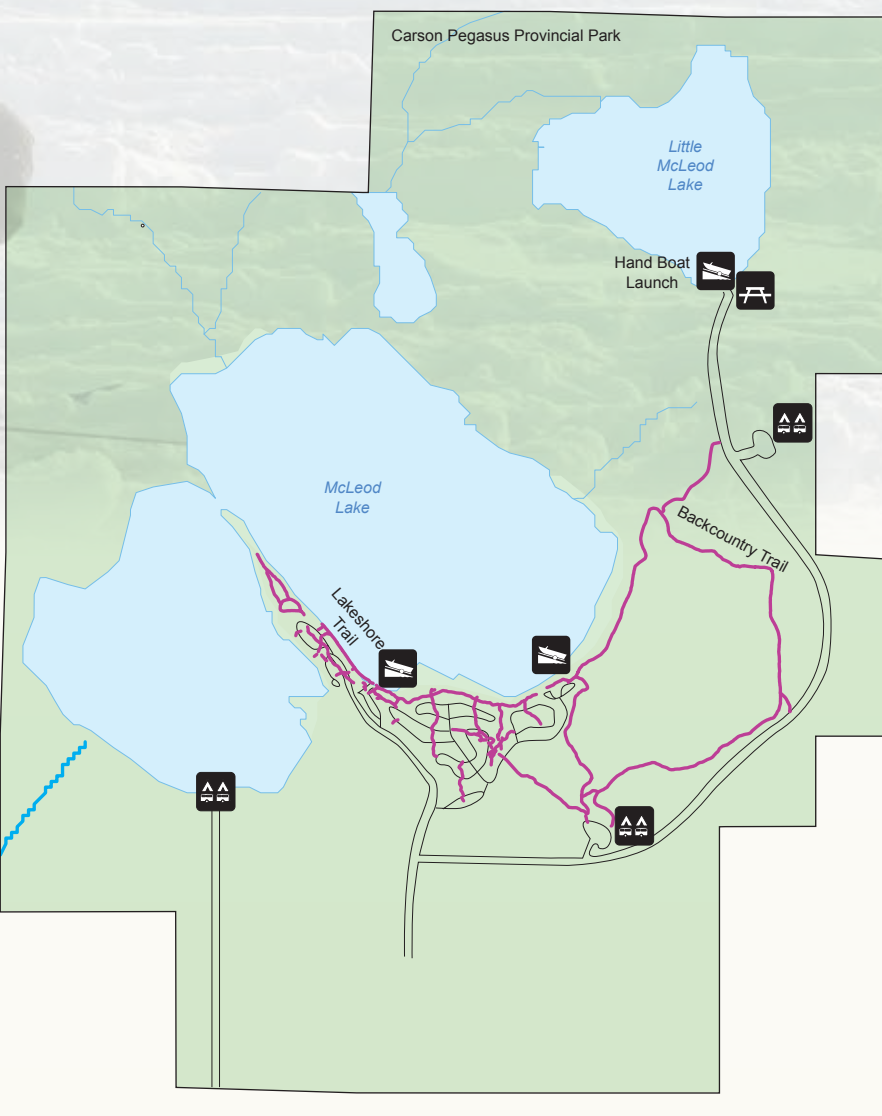
The Northland Sno Goers Snowmobile Club grooms some 100 km of trails in the area and operates a clubhouse and five warm up shelters. Fox Creek is also the westernmost point on the Golden Triangle route, connecting it with Whitecourt and Swan Hills.



- Special Interest Sites**
1. Alberta Forest Service Museum
  2. Athabasca Muskog Creek Trails
  3. Athabasca "Old Brick School"
  4. Barnhead Centennial Museum
  5. Canadian Tractor Museum
  6. "Geophysical centre of Alberta"
  7. E. S. Huestis Demonstration Forest
  8. Forest Interpretive Centre and Heritage Park
  9. Fort Assiniboine Museum
  10. Galloway Museum
  11. George Pegg Botanic Garden
  12. Hinton Museum of Culture & Heritage
  13. Hoodoos via the Wild Sculpture Trail
  14. Lac St. Anne Historical Society Pioneer Museum
  15. Mayerthorpe Fallen Four Memorial Park
  16. Mission Hill
  17. Musée Héritage Museum
  18. Musée Morinville Museum
  19. Onoway Museum
  20. Profiles Public Art Gallery
  21. St. Albert Botanic Park
  22. St. Albert Heritage Sites
  23. Tipple Park Museum and Information Centre
  24. Westlock Pioneer Museum
  25. Whitecourt Riverboat Park
  26. Woodland County Hard Luck Canyon
  27. World's Largest Wagon Wheel and Pick Axe
  28. World's Tallest Working Weather Vane
  29. Whiteridge MX Park

# Carson-Pegasus Provincial Park

**Carson-Pegasus Provincial Park** is a popular trout fishing spot that also protects mixed wood forests, bogs, marshes and lake shorelines. Marking the transition between foothills and boreal forest, these diverse landscapes are home to a variety of mammals and birds, including four species of woodpeckers. The 5.2 km **Backcountry Trail** loop follows the McLeod Lake shoreline before traversing through aspen and spruce woodlands, while the 1.7 km **Lakeshore Trail** traces the shoreline from a boat launch below a campground.



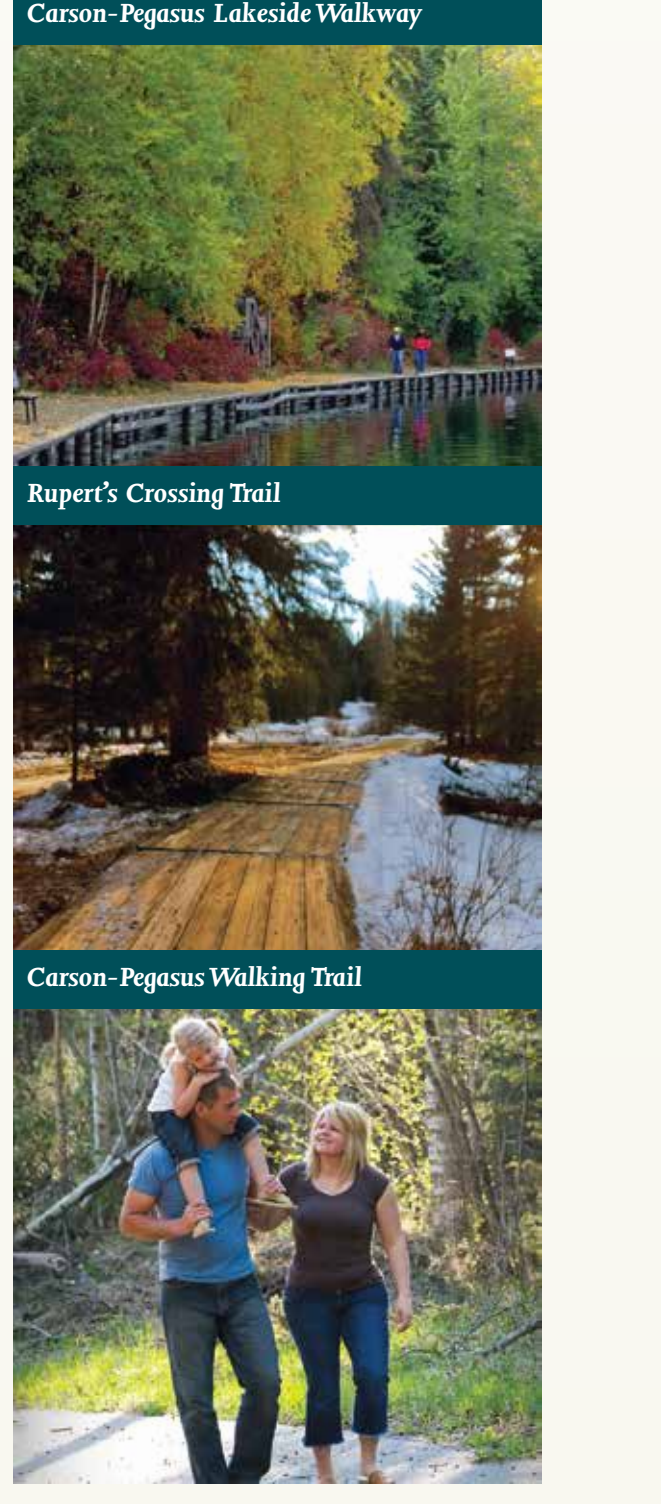
The Alberta Trail Mapping Partnership is made possible through the combined efforts of and funding from the following organizations, under the auspices of the Alberta Recreation Corridor and Trails Designation Program:

- Alberta Tourism, Parks and Recreation
- Alberta Environment and Sustainable Resource Development
- Alberta TrailNet Society
- Alberta Off-Highway Vehicle Association (AOHVA)
- Alberta Snowmobile Association

Gratitude is expressed to all local clubs, groups, organizations, individuals and municipalities for their review, comments, assistance with data and updates in developing this map.

For more information or for copies of the map, please contact Alberta TrailNet at 877-987-2457 or through www.albertatrailnet.com

Photo Credits:  
 Bill Corbett James Clark Andy Hayward  
 Barbara Prescott Project Partners Town of Athabasca  
 Travel Alberta Woodlands County



# Legend - West Half

- |                                    |                        |
|------------------------------------|------------------------|
| — Primary highways                 | Ⓜ All terrain vehicle  |
| — Secondary (paved & gravel roads) | Ⓜ Backcountry camping  |
| — Tertiary roads                   | Ⓜ Boat launch          |
| — Rail                             | Ⓜ Campground           |
| — Water                            | Ⓜ Canoeing             |
| — Urban                            | Ⓜ Cross country skiing |
| — Indian reserve                   | Ⓜ Cycling              |
| — Melts settlement                 | Ⓜ Day use area         |
| — Natural area                     | Ⓜ Equestrian           |
| — Forest recreation area           | Ⓜ Farmers market       |
| — Provincial recreation area       | Ⓜ Group campground     |
| — National park                    | Ⓜ Hiking               |
| — Provincial park                  | Ⓜ Historic site        |
| — Wildland park                    | Ⓜ Hospital             |
| — Wilderness park                  | Ⓜ Information centre   |
| — Public land use zone             | Ⓜ Motorcycle           |
| — Green area                       | Ⓜ Museum               |
| — Municipal park                   | Ⓜ Picnic shelter       |
| — Ecological reserve               | Ⓜ River tubing         |
| ● Watchable Wildlife sites         | Ⓜ Shelter              |
| 1 Special Interest Site            | Ⓜ Snowmobile           |
| ● Carsonia Trail                   | Ⓜ Staging area         |
| — Trans-Canadian Snowmobile Trail  | Ⓜ Viewpoint            |
- 
- |   |  |
|---|--|
| — Mixed use (motorized & non-motorized) | — Designated winter use                        |
| — Non-motorized                         | — Edson Towns with trails                      |
| — Historic Trail Route                  | — Off highway vehicle recreation activity area |
|   | — Non-motorized recreation activity area       |
- All trail distances are one way unless otherwise indicated.

**Know Before You Go**

There is limited maintenance on many trails. To maximize enjoyment of these trails, gather additional details about the trails, current conditions, local sites of interest, area services and access points from nearby communities and recreation associations (see website information in the text that accompanies this map). Further visitor information can be obtained from:

**Travel Alberta:** 1-800-ALBERTA www.travelalberta.com  
**Grande Alberta Economic Region (GAER):** www.grandealberta.com  
**Alberta Parks:** www.albertaparks.ca  
**Environment and Sustainable Resource Development:** www.srd.alberta.ca  
**Alberta Parks Campground Reservations:** online www.Reserve.AlbertaParks.ca or toll-free 877-537-2757  
**Woodlands County:** www.woodlands.ab.ca 888-870-6315

**Refer to other websites and visitor information phone numbers within the text.**

This map includes designated, managed trails; many can be used year round. Trail quality and difficulty of use can vary considerably, with surface materials ranging from pavement and groomed snow to dirt and corduroy. Some trails are signed and regularly maintained; others are not. Even maintained trails can be challenging when wet or covered in fresh snowfall.

Similarly, major access roads range from paved highways to good gravel to poorer gravel roads, which may not be regularly maintained.

Temperatures can range from winter lows of -40 Celsius to summer highs in the upper 30s. Precipitation and harsh conditions can occur at any time. Bugs can be bothersome, especially in wet and shaded areas in late spring and summer.

You may encounter wildlife, including grizzly, black bears and large ungulates. Fall hunting is permitted in many areas; be aware, and dress and behave appropriately.

Trails may be remote from services or help. Carry sufficient food, water, clothing, first aid and emergency/survival supplies, repair gear, navigation equipment and a mobile phone. Note: mobile phones may not have reception in all areas.

1:300,000  
 © 2012 Government of Alberta  
 Base Data Provided by the Spatial Data Warehouse Ltd.  
 The Crown provides this information without warranty or representation as to any matter including but not limited to whether the data/information is correct, accurate or free from error, defect, danger, or hazard and whether it is otherwise useful or suitable for any use the user may make of it.