



Alberta Farm Input Prices



Average Monthly Prices for June 2017

Farm Input Prices - Dollars (\$)	June 2016	May 2017	June 2017
Construction Grade Lumber, 2x6, spruce, M	593.99	747.08	744.23
Rough Grade Lumber, 2x8, spruce, M	776.69	984.14	987.01
Sheathing, plywood, spruce, unsanded, 9.6 mm, 4'x8' sheet	17.52	17.56	17.74
Fence Posts, standard grade, treated, 3-4" diameter, 7' length	5.98	7.13	7.40
Ready-Mix Concrete, 20 mpa strength, cubic metre	232.73	238.37	237.11
Nails, standard grade, 4" spiral, 50 lb box	81.45	81.75	83.54
Pipe, plastic, 1" diameter, 75 psi, 100' coil	60.11	63.27	63.47
Rods, steel reinforcing, 10 mm, 6 metre length	6.28	7.21	7.51
Barbed Wire, 12 gauge, double strand, 40 kg, 80 rod spool	69.53	70.03	70.51
Grain Bin, hopper bottom included, 4,000 bushel capacity, each *	15,717.59	16,414.62	16,610.04
Truck Tires, 1st line, blackwall, LT285-70R-17 Radial (environmental tax included), each	308.19	304.34	307.29
Storage Battery, 12 volt, 24 series, 525 cranking amps, each	103.81	110.15	111.88
V-Belt - Implement, 1/2" x 70", fibre, each	14.74	15.69	15.87
Antifreeze, ethylene glycol, anti-corrosion, 4 litre	15.19	15.20	15.22
Mechanical Repairs, for farm machinery, shop & labour, per hour	124.63	129.40	130.98
Baler Twine, plastic, for round baler, 28,000' bale	31.94	33.21	33.46
General Farm Labour, full-time, without board, per month	3,433.33	3,424.44	3,400.00
Tractor, FWD, 105-130 hp, 6 cylinder diesel, 12-24 speed transmission, new, each	139,516.19	145,193.39	148,297.50
Tractor, 4WD, 325-375 hp, 6-8 cylinder diesel, 12-18 speed transmission, new, each	382,032.23	388,214.86	391,773.64
Combine, self-prop, diesel, Class 7, 323-374 hp, new, each *	458,070.59	494,277.95	496,961.88
Air Drill, 40-42', 3 compartment tank, no variable rate, new, each *	267,545.99	306,902.23	311,456.93
Sprayer, pull-type, 800-900 gallon tank, 90-100' boom, new, each	68,137.05	66,765.88	66,804.53
Round Baler, pull-type, P.T.O. driven, 5'x6' hard core bale, new, each	58,393.81	57,968.15	58,123.71
Double Disc, heavy-duty tandem, 19-21', 22" blades, new, each	56,352.14	60,117.18	60,073.16
3/4 Ton Truck, V-8, 5.4L or 5.9L engine, 4X4, 4 speed automatic transmission, new, each	45,888.45	49,181.82	49,132.73
Calf-starter Ration, pellets, 13-20%, bagged, 25 kg *	15.65	16.62	16.87
Dairy Supplement, pellets, 32%, bagged, 25 kg *	19.31	20.62	20.70
Feedlot Supplement, pellets, 32%, (excl. Ionophore), bagged, 25 kg *	16.06	17.60	17.64
Hog Grower Ration, pellets, 15-17%, bagged, 25 kg *	15.64	15.89	15.94
Swine Supplement, pellets, 35-40%, bagged, 25 kg *	21.45	21.90	21.93
Broiler Grower Complete Feed, 18-20%, bagged, 25 kg *	16.39	17.89	18.05
Cattle Mineral, salt-free, 18% Phosphorus & 18% Calcium, 20 kg *	32.75	30.57	30.56
Feed Barley, No. 1, non-board, farm gate, bushel	3.71	3.08	3.14
Feed Wheat, No. 1, non-board, farm gate, bushel	5.16	4.61	4.62
Feed Oats, good quality, farm gate, bushel **	2.64	2.39	2.42
Hay, good quality, over 50% Alfalfa, farm gate, ton	122.79	114.74	115.26
Fertilizer, 46-0-0, Urea, bulk, tonne	527.95	538.09	534.95
Fertilizer, 11-51-0, bulk, tonne	792.73	704.26	711.59
Fertilizer, 82-0-0, Anhydrous Ammonia, full service with applicator, bulk, tonne	937.20	931.44	926.63
Refine SG granular, 486 gram *	279.90	282.87	283.71
Assert 300 SC, liquid, 10.8 litre	236.20	238.51	238.99
Roundup WeatherMAX, liquid, 10 litre	74.45	75.20	72.19
Penicillin, Procaine Penicillin G, injectable, short-acting, 300 mg/ml, 250 ml	20.10	18.76	18.56
Vitamin AD with E, injectable, IU/cc: A:500,000 D:75,000 E:50, 250 ml	29.10	32.13	32.37
Seed, Wheat, Certified No. 1, bulk, 100 kg	51.00	52.25	52.60
Seed, Barley, Certified No. 1, bulk, 100 kg	42.60	39.20	39.87
Seed, Roundup Ready HT Canola, Certified No. 1, treated, bagged, 22.7 kg **	477.76	469.22	477.21
Seed, Liberty Link HT Canola, Certified No. 1, treated, bagged, 22.7 kg **	593.63	617.86	615.59
Purple Gasoline, regular unleaded, marked farm fuel, 100 litres	92.41	87.89	89.59
Diesel Fuel, marked farm fuel, (provincial allowance deducted), 100 litres	84.64	85.13	84.56
Propane, liquefied, bulk, 100 litres	57.42	62.98	62.28
Natural Gas, (excluding service or delivery charge, prov. rebate deducted where applicable), GJ	1.58	2.32	1.84
Electricity, farm use, (excluding service or delivery charge), 100 kwh	3.54	3.16	3.15
Oil, for diesel engines, 15W-40, (environmental tax included), 5 litre *	20.54	20.74	21.57

All agricultural inputs were reported to be in good supply for the month of June 2017 with the exception of general farm labour in some areas of the province.

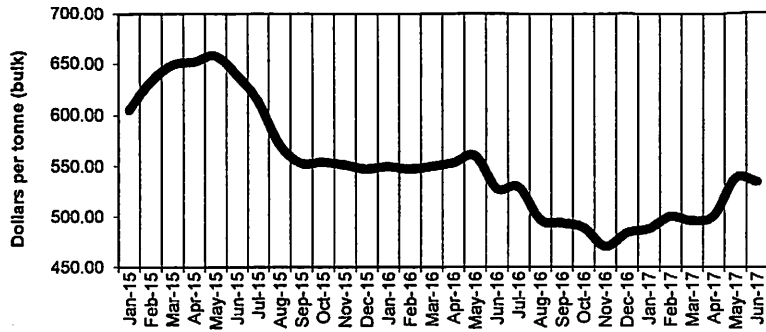
The prices reported are simple averages for the province in Canadian Dollars (\$), and are based on a survey conducted in the first week of each month.

* Specification changed as of January 2012 ** New input as of January 2012

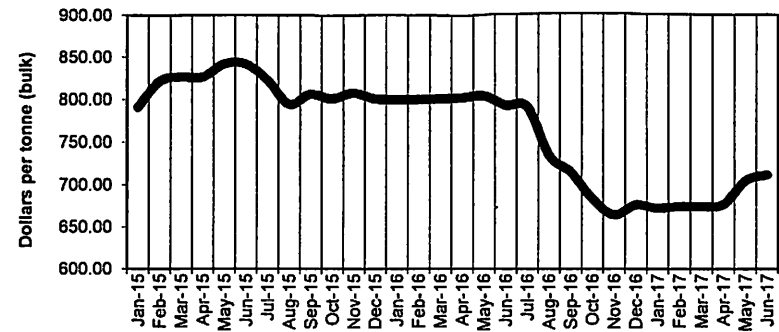
Source: Alberta Agriculture and Forestry, Economics and Competitiveness Branch, Statistics and Data Development Section, in partnership with Alberta Federation of Agriculture. For additional information, please phone: 780-644-1308.

Note to Users: The contents of this document may not be used or reproduced without properly accrediting Alberta Agriculture and Forestry, Economics and Competitiveness Branch, Statistics and Data Development Section.

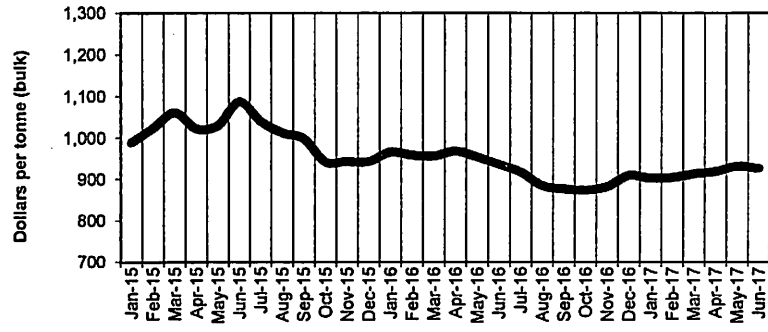
**FERTILIZER, 46-0-0
Alberta, Monthly 2015 - 2017**



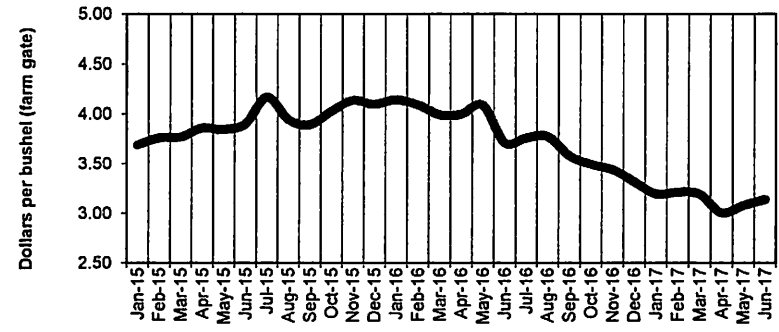
**FERTILIZER, 11-51-0
Alberta, Monthly 2015 - 2017**



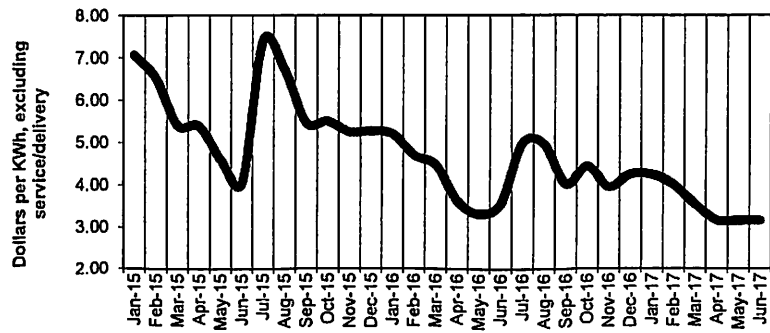
**FERTILIZER, 82-0-0
Alberta, Monthly 2015 - 2017**



**FEED BARLEY, NO. 1, NON-BOARD
Alberta, Monthly 2015 - 2017**



**ELECTRICITY, FARM USE
Alberta, Monthly 2015 - 2017**



**FEED WHEAT, NO. 1, NON-BOARD
Alberta, Monthly 2015 - 2017**

