



# Alberta Farm Input Prices



## Average Monthly Prices for September 2017

Farm Input Prices - Dollars (\$)	September 2016	August 2017	September 2017
Construction Grade Lumber, 2x6, spruce, M	596.07	792.78	816.08
Rough Grade Lumber, 2x8, spruce, M	761.88	997.83	994.57
Sheathing, plywood, spruce, unsanded, 9.6 mm, 4'x8' sheet	18.21	21.02	20.98
Fence Posts, standard grade, treated, 3-4" diameter, 7' length	6.09	6.42	6.28
Ready-Mix Concrete, 20 mpa strength, cubic metre	236.54	234.76	238.87
Nails, standard grade, 4" spiral, 50 lb box	82.23	80.20	84.29
Pipe, plastic, 1" diameter, 75 psi, 100' coil	60.70	64.73	62.79
Rods, steel reinforcing, 10 mm, 6 metre length	6.16	7.10	7.24
Barbed Wire, 12 gauge, double strand, 40 kg, 80 rod spool	69.46	70.46	69.55
Grain Bin, hopper bottom included, 4,000 bushel capacity, each *	16,168.86	16,581.94	16,773.02
Truck Tires, 1st line, blackwall, LT285-70R-17 Radial (environmental tax included), each	305.48	301.76	309.58
Storage Battery, 12 volt, 24 series, 525 cranking amps, each	105.60	113.41	113.09
V-Belt - Implement, 1/2" x 70", fibre, each	15.06	16.26	16.14
Antifreeze, ethylene glycol, anti-corrosion, 4 litre	15.07	15.94	16.02
Mechanical Repairs, for farm machinery, shop & labour, per hour	127.67	128.92	129.33
Baler Twine, plastic, for round baler, 28,000' bale	32.60	33.46	33.54
General Farm Labour, full-time, without board, per month	3,491.67	3,386.11	3,564.44
Tractor, FWD, 105-130 hp, 6 cylinder diesel, 12-24 speed transmission, new, each	138,625.16	148,814.87	150,918.82
Tractor, 4WD, 325-375 hp, 6-8 cylinder diesel, 12-18 speed transmission, new, each	389,196.08	385,528.66	385,016.27
Combine, self-prop, diesel, Class 7, 323-374 hp, new, each *	489,378.66	481,595.49	480,408.18
Air Drill, 40-42', 3 compartment tank, no variable rate, new, each *	279,377.31	301,515.84	309,923.16
Sprayer, pull-type, 800-900 gallon tank, 90-100' boom, new, each	70,140.19	65,505.79	69,399.91
Round Baler, pull-type, P.T.O. driven, 5'x6' hard core bale, new, each	59,271.25	60,552.83	60,035.68
Double Disc, heavy-duty tandem, 19-21', 22" blades, new, each	56,444.77	59,012.59	59,939.86
3/4 Ton Truck, V-8, 5.4L or 5.9L engine, 4X4, 4 speed automatic transmission, new, each	47,279.78	49,851.36	49,262.23
Calf-starter Ration, pellets, 13-20%, bagged, 25 kg *	15.56	16.93	16.91
Dairy Supplement, pellets, 32%, bagged, 25 kg *	18.86	20.80	20.81
Feedlot Supplement, pellets, 32%, (excl. Ionophore), bagged, 25 kg *	15.92	17.71	17.32
Hog Grower Ration, pellets, 15-17%, bagged, 25 kg *	15.59	16.34	16.31
Swine Supplement, pellets, 35-40%, bagged, 25 kg *	21.13	21.90	21.83
Broiler Grower Complete Feed, 18-20%, bagged, 25 kg *	15.80	18.05	17.94
Cattle Mineral, salt-free, 18% Phosphorus & 18% Calcium, 20 kg *	32.40	29.63	29.94
Feed Barley, No. 1, non-board, farm gate, bushel	3.58	3.62	3.85
Feed Wheat, No. 1, non-board, farm gate, bushel	4.59	4.84	5.02
Feed Oats, good quality, farm gate, bushel **	2.36	2.37	2.48
Hay, good quality, over 50% Alfalfa, farm gate, ton	115.88	122.10	117.95
Fertilizer, 46-0-0, Urea, bulk, tonne	494.00	495.30	477.98
Fertilizer, 11-51-0, bulk, tonne	714.78	690.46	695.14
Fertilizer, 82-0-0, Anhydrous Ammonia, full service with applicator, bulk, tonne	877.23	884.89	849.27
Refine SG granular, 486 gram *	283.70	282.34	283.61
Assert 300 SC, liquid, 10.8 litre	228.06	235.23	237.22
Roundup WeatherMAX, liquid, 10 litre	72.68	75.58	76.97
Penicillin, Procaine Penicillin G, injectable, short-acting, 300 mg/ml, 250 ml	19.65	18.82	19.22
Vitamin AD with E, injectable, IU/cc: A:500,000 D:75,000 E:50, 250 ml	29.90	32.31	32.39
Seed, Wheat, Certified No. 1, bulk, 100 kg	53.94	53.64	53.84
Seed, Barley, Certified No. 1, bulk, 100 kg	40.30	42.43	41.49
Seed, Roundup Ready HT Canola, Certified No. 1, treated, bagged, 22.7 kg **	465.67	481.41	481.09
Seed, Liberty Link HT Canola, Certified No. 1, treated, bagged, 22.7 kg **	592.30	612.86	613.35
Purple Gasoline, regular unleaded, marked farm fuel, 100 litres	81.52	85.56	91.17
Diesel Fuel, marked farm fuel, (provincial allowance deducted), 100 litres	78.17	83.69	87.07
Propane, liquefied, bulk, 100 litres	61.69	61.98	64.16
Natural Gas, (excluding service or delivery charge, prov. rebate deducted where applicable), GJ	2.53	2.50	2.06
Electricity, farm use, (excluding service or delivery charge), 100 kwh	4.01	3.97	3.63
Oil, for diesel engines, 15W-40, (environmental tax included), 5 litre *	20.59	21.34	20.12

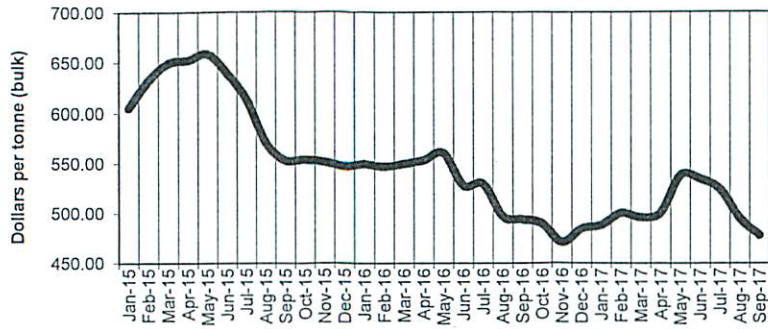
All agricultural inputs were reported to be in good supply for the month of September 2017 with the exception of general farm labour in some areas of the province. The prices reported are simple averages for the province in Canadian Dollars (\$), and are based on a survey conducted in the first week of each month.

\* Specification changed as of January 2012 \*\* New input as of January 2012

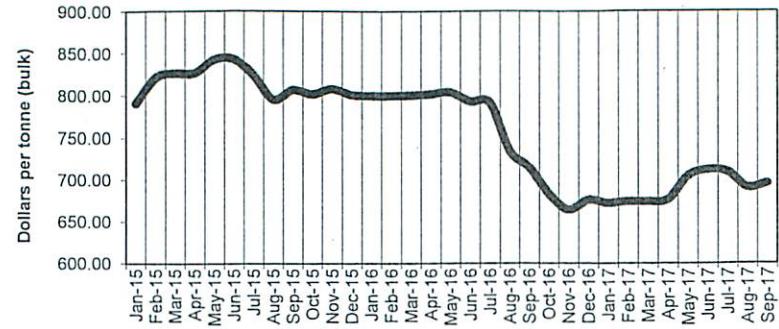
Source: Alberta Agriculture and Forestry, Economics and Competitiveness Branch, Statistics and Data Development Section, in partnership with Alberta Federation of Agriculture. For additional information, please phone: 780-644-1308.

Note to Users: The contents of this document may not be used or reproduced without properly accrediting Alberta Agriculture and Forestry, Economics and Competitiveness Branch, Statistics and Data Development Section.

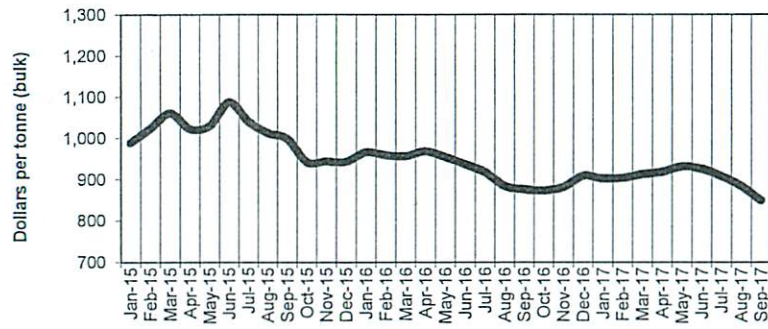
**FERTILIZER, 46-0-0**  
Alberta, Monthly 2015 - 2017



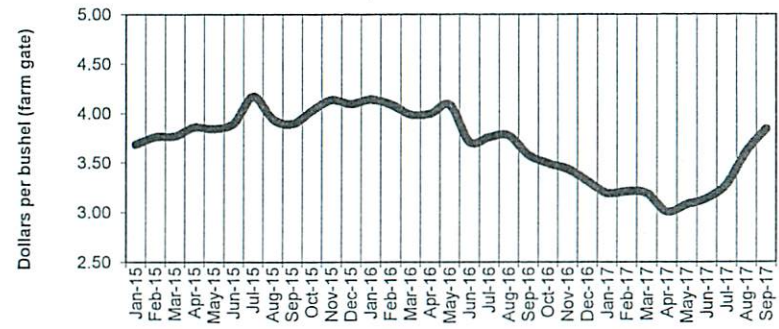
**FERTILIZER, 11-51-0**  
Alberta, Monthly 2015 - 2017



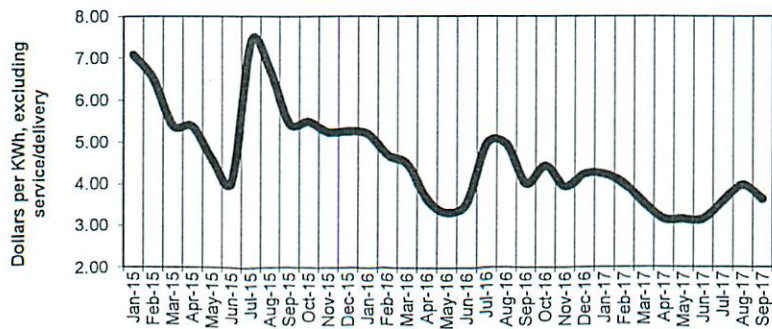
**FERTILIZER, 82-0-0**  
Alberta, Monthly 2015 - 2017



**FEED BARLEY, NO. 1, NON-BOARD**  
Alberta, Monthly 2015 - 2017



**ELECTRICITY, FARM USE**  
Alberta, Monthly 2015 - 2017



**FEED WHEAT, NO. 1, NON-BOARD**  
Alberta, Monthly 2015 - 2017

