

South Dakota – Alberta Relations



PROFILE

Capital: Pierre

Population: 844,877 (2013 estimate)

Language: English

Government: Bicameral state government

Head of Government: Governor Dennis Daugaard (R) First Term (term expires January 2015)

Two consecutive term limit; eligible again after one term respite

Currency: U.S. Dollar
\$1 CDN = \$0.90 U.S. Dollars (March 2014)

Gross State Product (GSP): U.S. \$42.5 billion (2012)

Per Capita Income: U.S. \$43,659 (2012)

Unemployment Rate: 3.7% (March 2014)

Key Industry Sectors: Agriculture, forestry, mining, manufacturing and financial services

Main Cities (Metro Area): (2012)

- Sioux Falls : 159,908
- Rapid City : 69,854
- Aberdeen : 26,791

DID YOU KNOW?

- The name South Dakota comes from the Sioux tribe, meaning “allies”.
- South Dakota has the fifth lowest population density in the U.S.
- South Dakota has four technical institutes and six public colleges or universities. The largest institution is in Brookings, South Dakota State University, with approximately 8,000 students.

SHARED ORGANIZATIONS

- Council of State Governments Midwest (CSG Midwest)
- Ports-to-Plains Alliance (PTP)

RELATIONSHIP OVERVIEW

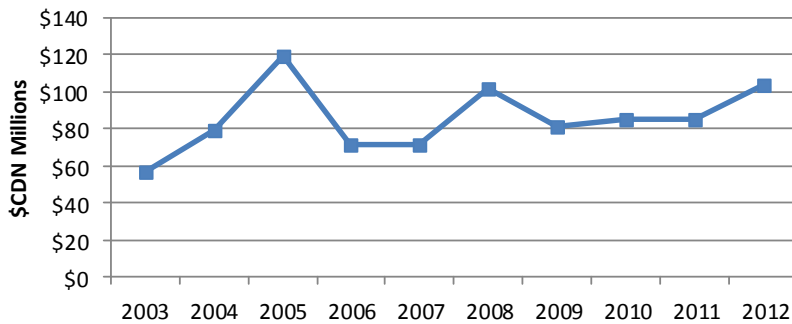
- A recent study by the Canadian Energy Research Institute estimated that between 2011 and 2035 the development of Alberta’s oil sands will add an annual average of between \$10 and \$25 million per year to the economy of South Dakota and will preserve or create an average of 160 to 360 jobs per year, with those workers earning between \$4 and \$10 million. The range of these estimates depends on the ability of growing oil sands production in Alberta to find pipeline access to market.

- 2 South Dakota companies have been identified that supply equipment, parts and services being used in the development of Alberta’s oil sands.
- The proposed Keystone XL Pipeline will transport crude oil from Alberta through South Dakota on its way to refineries in the Gulf Coast region.

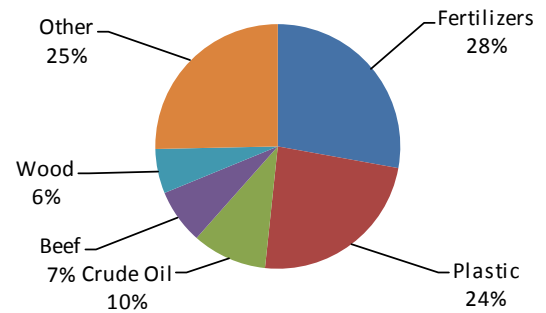
INDUSTRY AND ECONOMY

- South Dakota’s economy is largely based on agriculture, mining and manufacturing. Tourism, service industries, transportation and commerce are becoming increasingly important.
- The primary minerals produced in South Dakota are, gold, crushed stone, sand, and gravel.
- South Dakota has a growing manufacturing industry, especially industrial machinery.

Alberta's Domestic Exports to South Dakota (2003-2012)



Alberta's Domestic Exports to South Dakota (2008-2012 Average)



TRADE AND INVESTMENT

- From 2008-2012, Alberta's domestic exports to South Dakota have averaged \$91.5 million annually.
- Alberta's merchandise exports to South Dakota include fertilizers, plastic, crude oil, beef, and wood.
- In 2012 Alberta exports to South Dakota totaled \$103.5 million.
- South Dakota imported 6.7 billion cubic feet of natural gas from Alberta in 2009.

ENERGY

- South Dakota ranked 5th out of all U.S. states in ethanol production in 2011.
- In 2011, South Dakota had more net electricity generated from hydroelectric power than from any other source.
- 46.5 % of South Dakota's electricity is generated from coal sources while 47.5% is generated from hydroelectric sources.
- Approximately 88% of South Dakota's land area had high wind power potential.

TOURISM

- The Black Hills of South Dakota are home to Mount Rushmore.
- Other tourist attractions include the Badlands; the World's Only Corn Palace, in Mitchell; and the city of Deadwood, where Wild Bill Hickok was killed in 1876 and where gambling was recently legalized.

AGRICULTURE

- Agriculture contributes over \$19 billion to South Dakota's economy each year.
- Agricultural processing adds \$3 billion to the value of raw commodities harvested from South Dakota's farms and ranches.
- South Dakota is known for producing wheat, corn, sunflowers, and small grains (oats, barley, rye, and alfalfa).
- South Dakota ranks among the top ten states nationally in producing corn, soybeans, wheat, proso millet, flaxseed, sorghum, sunflowers, oats, alfalfa, hay, honey, cattle, sheep, and bison.
- Alberta's 2012 agri-food exports to South Dakota totaled \$6.9 million. Top exports included oats (\$1.35 million), live animals (excluding cattle and hogs) (\$1.25 million), frozen meat (excluding beef and pork) (\$0.92 million), and unmilled cereals (\$0.86 million).
- The Canadian and Alberta governments undertook extensive advocacy efforts in 2013 to influence the U.S. to comply with their World Trade Organization obligations regarding COOL. As a result of these efforts, resolutions in support of this were passed by the following organizations: Legislative Agriculture Chairs, Council of State Governments (CSG) National, CSG Midwest, CSG-WEST, Ports-to-Plains Alliance, Canadian/American Border Trade Alliance, and the Pacific NorthWest Economic Region.

RECENT VISITS/MISSIONS

- August 2013: Senator Craig Tieszen (R) and Representative Roger Solum (R) toured the oil sands as part of the Midwestern Legislative Conference (MLC) delegation.
- November 2011: State Senator Ryan Maher (R) and State Senator Dan Lederman (R) were briefed by GOA officials in Edmonton and toured the oil sands as part of the National Council of State Legislatures.
- September 2010: MLA Len Mitzel represented Alberta at the Ports-to-Plains Alliance 2010 Annual Meeting in Rapid City, South Dakota.

DIPLOMATIC REPRESENTATION

- His Excellency Bruce Heyman is the U.S. Ambassador to Canada.
- The Canadian Ambassador to the U.S. in Washington, D.C. is Gary Doer.
- The Canadian Consulate responsible for South Dakota is located in Minneapolis. Jamshed Merchant is the Consul General.
- The U.S. Consul General located in Calgary responsible for Alberta is Peter Kujawinski.