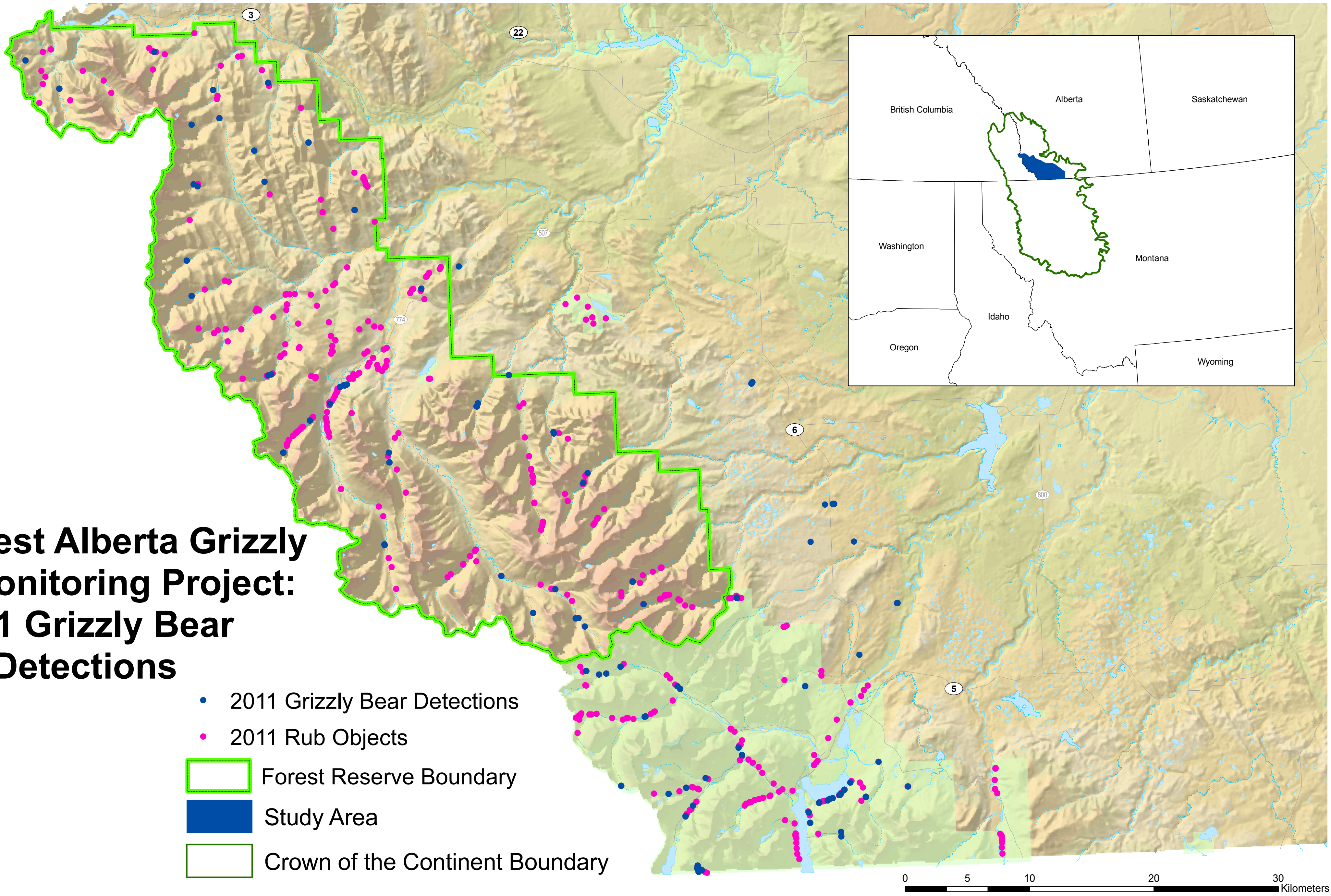


# Southwest Alberta Grizzly Bear Monitoring Project: 2011 Grizzly Bear Detections

- 2011 Grizzly Bear Detections
- 2011 Rub Objects
- Forest Reserve Boundary
- Study Area
- Crown of the Continent Boundary



This map represents the locations (blue dots) where a hair sample was collected that yielded an individual ID for a grizzly bear. Sometimes the same grizzly bear was detected multiple times. The lack of an individual detection at a sampling point does not necessarily mean that no hair was collected; hair samples could have lacked sufficient material for DNA, been black bear, or failed at some stage of the genetic analysis. Additionally, the 2011 field season was short (see website for additional information), and we expect more rub objects to have hairs yielding an individual ID in the future.