

# Alberta Health

## Primary Care Network Operations

Community Profile: Cypress County excluding  
Medicine Hat  
Health Data and Summary

5<sup>th</sup> Edition, August 2022

## Table of Contents

<b>Introduction</b> .....	i
<b>Community Profile Summary</b> .....	iv
<b>Zone Level Information</b> .....	1
<b>Map of Alberta Health Services South Zone</b> .....	2
<b>Population Health Indicators</b> .....	3
Table 1.1 Zone versus Alberta Population Covered as at March 31, 2021 .....	3
Table 1.2 Health Status Indicators for Zone versus Alberta Residents, 2019 and 2020 (Body Mass Index, Mental Health before and during COVID, Smoking, Self-Perceived Stress Tolerance) .....	3
Table 1.3 Zone versus Alberta Infant Mortality Rates (per 1,000 live births), Years 2018 – 2020 .....	4
<b>Community Mental Health</b> .....	5
Table 1.4 Zone versus Alberta Community Mental Health Access by Age Group and Gender, 2020/2021 .....	5
Table 1.5 Zone versus Alberta Community Mental Health Access by Service Type, 2020/2021 .....	5
<b>Local Geographic Area Level Information</b> .....	7
<b>Map of Selected Health Services in Local Geographic Area</b> .....	8
<b>Demographics</b> .....	9
Table 2.1 Distribution of Population Covered by Age and Gender as at March 31, 2021 .....	9
Figure 2.1 Percentage Distribution of Local Geographic Area versus Alberta Population by Age Groups as at March 31, 2021 .....	9
Figure 2.2 Local Geographic Area Population Covered as at end of Fiscal Years 2001 – 2021 .....	10
<b>Social Determinants of Health Indicators</b> .....	11
Table 3.1 Population Percentage of First Nations with Treaty Status and Inuit as at March 31, 2018 .....	11
Table 3.2 Social Determinants of Health Indicators for Local Geographic Area versus Alberta Residents, 2016 (Family Composition, Family Income, Housing, Mobility, Language, Immigration, Educational Attainment, Household and Dwelling Characteristics) .....	12
<b>Chronic Disease Prevalence</b> .....	14
Figure 4.1 Local Geographic Area Age-Standardized Chronic Disease Prevalence Rates (per 100 population), 2013 – 2020 (Chronic Obstructive Pulmonary Disease, Diabetes, Hypertension, Ischemic Heart Disease) .....	14
Figure 4.2 Local Geographic Area versus Alberta Age-Standardized Chronic Disease Prevalence Rates (per 100 population), 2020 (Chronic Obstructive Pulmonary Disease, Diabetes, Hypertension, Ischemic Heart Disease) .....	15

<b>Maternal and Child Health</b> .....	16
Table 5.1 Local Geographic Area Maternal and Child Health Indicators for the Period 2018/2019 – 2020/2021 (Number of Births, Percent of Low/High Birth Weight, Birth Rate, Fertility Rate, Teen Birth Rate, Percent Maternal Prenatal Smoking).....	16
Table 5.2 Childhood Immunization Coverage Rates 2020.....	17
<b>Sexually Transmitted Infections</b> .....	18
Table 6.1 Top 5 Sexually Transmitted Infection (STI) Rates (per 100,000 population) by Three-Fiscal-Year Period.....	18
<b>Mortality</b> .....	19
Figure 7.1 Local Geographic Area Age-Standardized Mortality Rates (per 100,000 population) by Three-Calendar-Year Period.....	19
Figure 7.2 Local Geographic Area versus Alberta Age-Standardized Mortality Rates (per 100,000 population) for Three-Calendar-Year Period 2019 – 2021.....	20
Figure 7.3 Local Geographic Area Distribution of Deaths by Cause of Death Across 10 Calendar Years, 2011 – 2021.....	21
<b>Emergency Service Utilization (Part A: All CTAS Levels &amp; Part B: All Emergency Visits)</b> .....	22
Table 8.1 Emergency Visits for Patients Residing in the Local Geographic Area by CTAS Level, Fiscal Years 2018/2019 – 2020/2021.....	22
Figure 8.1 Emergency Visit Rates (per 1,000 population) for CTAS Levels Semi-Urgent (4) and Non-Urgent (5), Fiscal Year 2020/2021.....	22
Figure 8.2 Average Number of Emergency Visits for Patients Residing in the Local Geographic Area for CTAS Levels Semi-Urgent (4) and Non-Urgent (5) Combined by Weekday/Weekend and Hour of Day (Fiscal Year 2020/2021) .....	23
Figure 8.3 Local Geographic Area Age-Standardized Emergency Visit Rates (per 100,000 population) for Selected Conditions, 2013 – 2020 (Acute Upper Respiratory Infections, Arthritis, Asthma, Diabetes, Diseases of Middle Ear and Mastoid, Emphysema and Chronic Bronchitis, Influenza, Mental & Behavioural Disorders due to Psychoactive Substance Use, Other Acute Lower Respiratory Infections, Renal Failure, Stroke) .....	25
Figure 8.4 Local Geographic Area versus Alberta Age-Standardized Emergency Visit Rates (per 100,000 population) for Selected Conditions, Calendar Year 2020 (Acute Upper Respiratory Infections, Arthritis, Asthma, Diabetes, Diseases of Middle Ear and Mastoid, Emphysema and Chronic Bronchitis, Influenza, Mental & Behavioural Disorders due to Psychoactive Substance Use, Other Acute Lower Respiratory Infections, Renal Failure, Stroke) .....	26
<b>Inpatient Service Utilization</b> .....	27
Table 9.1 Inpatient Separation Rates (per 100,000 population) for Patients Residing in the Local Geographic Area versus Alberta, Fiscal Years 2018/2019 – 2020/2021 .....	27
Figure 9.1 Local Geographic Area Age-Standardized Inpatient Separation Rates (per 100,000 population) for Selected Conditions, 2013/2014 – 2020/2021 (Asthma, Diabetes, Influenza, Ischemic Heart Diseases, Mental and Behavioural Disorders due to Psychoactive Substance Use, Pneumonia, Pulmonary Heart and Pulmonary Circulation Diseases) .....	27

Figure 9.2 Local Geographic Area versus Alberta Age-Standardized Inpatient Separation Rates (per 100,000 population), for Selected Conditions, 2020/2021 (Asthma, Diabetes, Influenza, Ischemic Heart Diseases, Mental and Behavioural Disorders due to Psychoactive Substance Use, Pneumonia, Pulmonary Heart and Pulmonary Circulation Diseases) .....28

**Primary Health Care Indicators of Community Primary Care Need**..... 29

Table 10.1 Primary Health Care Indicators of Community Primary Care Need..... 29

1. Travel: Percentage of LGA's Recipients' Family Physician Claims Reported Outside of the LGA, 2020/2021
2. Number of Family Physicians (per 100,000 population), 2020/2021
3. Ambulatory Care Sensitive Conditions – Age-Standardized Separation Rate (per 100,000 population), 2020/2021
4. General Practice Care Sensitive Conditions - Age-Standardized Rate (per 100,000 population), 2020/2021
5. ED Visits Related to Mood and Anxiety Disorders Age-Standardized Rate (per 100,000 population), 2020/2021
6. ED Visits Related to Substance Abuse Age-Standardized Rate (per 100,000 population), 2020/2021
7. ED Readmissions within 30 Days of Discharge from Hospital Age-Standardized Rate (per 100,000 population), 2020/2021
8. Age-Standardized Rate of People with Three or more Chronic Diseases (per 100 population), 2020/2021
9. Percentage of Influenza Vaccines for Those 65 and Over, 2020/2021
10. Average Canadian Deprivation Index (per 100 population), 2013
11. SES: Percentage of People Receiving Support, in the Population, 2020/2021
12. Life Expectancy at Birth, 2011 to 2020

**Access to Health Services**..... 33

Table 11.1 Ambulatory Care Visits and Inpatient Separations for the Local Geographic Area Residents to Facilities Located In versus Out of the Local Geographic Area, Fiscal Year 2020/2021 ..... 33

Table 11.2 Top 3 Non-Local Ambulatory Care Facilities/ Acute Care Hospitals Accessed by Local Residents, Fiscal Year 2020/2021 ..... 33

**Appendix A – Definitions**..... 35

**Appendix B – Community Services Online Resources**..... 44

**Appendix C – Health Link Alberta Calls by Zone**..... 49

**Appendix D – Select Health Services in Local Geographic Area**..... 51

## INTRODUCTION

Primary Health Care provides an entry point into the health care system and links individuals to medical services as well as social and community supports. The Government of Alberta continues working to improve primary health care within the province. The Primary Health Care Strategy has five strategic directions: Bring about cultural change, Enhance delivery of care, Establish building blocks for change, Population needs based design, Increase value and return on investment. Primary health care services in Alberta are delivered in a variety of settings and by a range of providers. Current primary health care models in Alberta include: primary care networks, stand-alone physician clinics, community health centres, urgent-care centres, community ambulatory care centres, medicentres, and university health centres.

To assist with primary health care planning, Alberta Health has developed a series of reports to provide a broad range of demographic, socio-economic and population health statistics considered relevant to primary health care for communities across the province. Alberta Health Services divides the province into five large health service Zones, and these Zones are subdivided into smaller geographic areas called local geographic areas (LGAs). The Alberta Health “Community Profile” reports provide information at the Zone and LGA level for each of the 132 LGAs in Alberta.

The Community Profiles (Profiles) are intended to highlight areas of need and provide relevant information to support the consistent and sustainable planning of primary health services. Each Profile offers an overview of the current health status of residents in the LGA, indicators of the area’s current and future health needs, and evidence as to which quality services are needed on a timely and efficient basis to address the area’s needs.

Each report includes sections that present Zone and LGA level information. In addition, the Profile includes Appendices containing sources of additional information about the community (e.g. Health Link Alberta and community services).

The Zone level section opens with a Zone map that puts the specific LGA into context and includes health-related statistics at the Zone level (the highest geographic breakdown next to the full provincial view). Some of the Zone level health indicators are unique to this section and are not currently available at the LGA level.

The LGA section of the Profile is divided into a number of sub-sections and is the core component of each report. The population size of LGA varies substantially from very small in rural areas to large in metropolitan centers. A compendium of health related information on demographics, prevalence rates, emergency visits, mental health and addiction, maternal and child health and more, is included in this section. In addition, information on indicators of need (relating to utilization, health population needs and social determinants of health) is also provided. Furthermore, each Community Profile contains information on access statistics, offering some additional insight into existing needs that are not being met, as well as the utilization of non-local facilities by LGA residents. A map of selected health services available in each LGA, together with a listing of these locations, is also included in each report.

A confounding factor that should be taken into consideration in the analysis of this report is the SARS-CoV-2 pandemic. Both the adaptation of the health system to respond to the pandemic and the effect of COVID-19 on the health and well-being of Albertans will have short- and long-term impacts on indicators. Although it is difficult to quantify the impact, the effects on the local health system potentially include increased acute service utilization, increased or decreased non-acute service utilization, decrease in routine screening and management of chronic illnesses, increased morbimortality due to respiratory illnesses, direct and indirect sequelae in convalescent COVID-19 patients, and increased health care costs including workforce burden.

While the current Community Profile contains information at both the zone and LGA level, information could be updated or added to the profile if information is provided by the community. For more information contact PCNOps@gov.ab.ca.

**Note:**

*Various data sources are used to compile the Community Profiles, which were developed through the collaboration of Alberta Health (Primary Care Network Operations; Analytics and Performance Reporting; Strategic Policy; Addiction and Mental Health) and Alberta Health Services (Primary Health Care).*

**Disclaimer:**

*Qualifiers such as 'higher than', 'much lower than', 'similar to' etc. are used throughout the community profile to compare local geographic area (LGA) indicator values to the provincial average. For each indicator, the standard deviation (SD) was used as the measuring stick for whether the values are "close" or "far apart". Note that the qualifiers 'similar' and 'comparable' are chosen to describe situations in which the LGA indicator value is either identical or very close to the provincial average. For some indicators (e.g. sexually transmitted infections) the range of values can differ considerably across LGAs. As such, values that may seem different to the reader could be classified as similar by our methodology. The complete set of comparison criteria is given below. For further details on these qualifiers please refer to Appendix A.*

Qualifier	Distance between values
Much Lower	below -1.5 SD
Lower	-1.5 SD to -0.25 SD
Similar/Comparable	-0.25 SD to +0.25 SD
Higher	+0.25 SD to +1.5 SD
Much Higher	+1.5 SD and higher

### **Contributors** *(Unit/Branch):*

**David Onyschuk** - *Customer Relationship Management & Data Access; Analytics & Performance Reporting*  
**Mengzhe Wang** - *Customer Relationship Management & Data Access; Analytics & Performance Reporting*  
**Dan Metes** - *Customer Relationship Management & Data Access; Analytics & Performance Reporting*  
**Lawrence Kiyang** - *Customer Relationship Management & Data Access; Analytics & Performance Reporting*  
**Jennifer Bian** - *Customer Relationship Management & Data Access; Analytics & Performance Reporting*  
**Rong-Cai Yang** - *Customer Relationship Management & Data Access; Analytics & Performance Reporting*  
**Serena Liu** - *Seniors Strategies and Program Supports; Alberta Seniors and Housing*

**Candy Gregory** - *Primary Care Network (PCN) Operations; Alberta Health*  
**Sam Oppong** - *Primary Care Network (PCN) Operations; Alberta Health*  
**Nelson Roth** - *Primary Care Network (PCN) Operations; Alberta Health*  
**Michelle Roxas** - *Primary Care Network (PCN) Operations; Alberta Health*  
**Hector Villarroel-Ocando** - *Primary Care Network (PCN) Operations; Alberta Health*

**Shaun Malo** - *Epidemiology & Surveillance; Analytics and Performance Reporting*  
**Kir Luong** - *Epidemiology & Surveillance; Analytics and Performance Reporting*  
**Xiaoyan Guo** - *Epidemiology & Surveillance; Analytics and Performance Reporting*  
**Allen O'Brien** - *Epidemiology & Surveillance; Analytics and Performance Reporting*

### **Suggested Citation:**

*Alberta Health Primary Care Network Operations –Community Profile: Cypress County excluding Medicine Hat, Health Data and Summary, 5th Edition, August 2022.*

## COMMUNITY PROFILE SUMMARY

### Local Geographic Area: Cypress County excluding Medicine Hat

The community profile contains a large number of demographic, socio-economic and health related indicators intended to provide a better understanding of the community's current and future health needs. Below is a brief overview of some of the key indicators for the local geographic area (LGA), Cypress County. For an in depth look at the data, please refer to the various sections of the report.

#### POPULATION HEALTH INDICATORS

- Health status indicators are available solely at the zone level. The percentage of obese adults in the South Zone (which includes Cypress County) was higher than the provincial percentage in 2020 (30.9% South Zone vs. 28.8% AB). (Table 1.2)
- There was a higher proportion of people with good to excellent mental health compared to Alberta (74.6% vs. 72.1% AB) during the COVID-19 pandemic. (Table 1.2)

#### DEMOGRAPHICS

- Cypress County's population increased by 32.0% between 2001 and 2021 (compared to a 46% increase for Alberta) and currently stands at 11,223 people. (Figure 2.2)
- The largest age group in the LGA, in 2021, was 35-64 year olds who accounted for 41.7% of the population compared to 40.5% for Alberta. (Figure 2.1)
- Children 17 and under made up 23.2% of the LGA's population compared to 22.0% for Alberta, while individuals 65 and older accounted for 14.5% of the population in the LGA versus 14.1% in Alberta. (Figure 2.1)

#### SOCIAL DETERMINANTS OF HEALTH INDICATORS

- Cypress County had a lower proportion of First Nations and Inuit people compared to Alberta (0.4% vs. 2.8% AB). (Table 3.1)
- The percentage of female lone-parent families was lower than the provincial percentage (6.5% vs. 11.0% AB). (Table 3.2)
- A similar proportion of families with an after-tax low-income level were reported in the LGA compared to Alberta (14.7% vs. 15.6% AB). (Table 3.1)
- The most common non-official languages spoken at home in the LGA were: German, Germanic languages, n.i.e., Punjabi (Panjabi), Spanish, and Korean. (Table 3.2)

#### CHRONIC DISEASE PREVALENCE

- In 2020, the disease with the highest prevalence rate (per 100 population) in Cypress County was hypertension. The rate associated with this disease was similar to the provincial rate (21.6 vs. 20.6 AB). (Figure 4.2)



## MATERNAL HEALTH

- From 2018/2019 to 2020/2021, Cypress County's birth rate per 1,000 women was lower than the provincial rate (19.8 vs. 23.1 AB) and the teen birth rate per 1,000 women was similar to Alberta's teen birth rate (8.2 vs. 6.9 AB). (Table 5.1)

## SEXUALLY TRANSMITTED INFECTIONS

- The highest sexually transmitted infections (STI) rate per 100,000 population in the LGA, in 2018/2019 - 2020/2021, was reported for chlamydia. None of the top 5 STI rates in the LGA were higher than the provincial rates. (Table 6.1)

## MORTALITY

- The mortality rate (per 100,000 population) due to all causes was lower in the LGA, in 2019-2021, compared to the province (655.6 vs. 700.3 AB) and the most frequent cause of death reported between 2011 and 2021 was neoplasms. (Figures 7.2 and 7.3)

## EMERGENCY SERVICE UTILIZATION (PART A: ALL CTAS LEVELS & PART B: ALL EMERGENCY VISITS)

- Semi and non-urgent emergency visits accounted for 44.3% of all emergency visits in 2020/2021. (Table 8.1)
- Acute upper respiratory infections were the most common reason for emergency visits (among select conditions) in 2020, and had a similar rate (per 100,000 population) compared to the provincial rate (1,473.9 vs. 1,424.1 AB). (Figure 8.4)

## INPATIENT SERVICE UTILIZATION

- Ischemic heart disease, mental & behavioural disorders due to psychoactive substance use, and diabetes were the top three main reasons for inpatient separations (among selected conditions) in 2021, and inpatient separation rates were higher than the provincial rates for 2 of 7 diagnoses. (Figure 9.2)

## MENTAL AND BEHAVIOURAL DISORDERS

- Mental and behavioural disorders are particularly important from a population health perspective. In 2020, Cypress County's emergency department (ED) visit rate for mental and behavioural disorders was lower than the provincial ED visit rate per 100,000 population (313.8 vs. 791.3 AB). (Figure 8.4)
- The inpatient discharge rate associated with mental and behavioural disorders was comparable to Alberta's discharge rate per 100,000 population (143.6 vs. 186.7 AB). (Figure 9.2)
- Between 2011 and 2020, mental and behavioural disorders accounted for 3.6% of all deaths in the LGA. (Figure 7.3) Note that deaths due to the top eight disease categories are displayed in Figure 7.3, while the remaining disease categories are grouped into the generic 'Other'.

## PRIMARY HEALTH CARE INDICATORS OF COMMUNITY PRIMARY CARE NEED

Through a series of consultation meetings and independent team analysis of 34 health indicators, primary health care teams from AHS and Alberta Health agreed to retain 11 of the most important health indicators relating to primary health care needs for each local geographic area. Some of these indicators relate to primary care utilization and availability of primary care services, while others refer to health conditions or health status such as incidence and prevalence of diseases. One additional indicator included, life expectancy at birth, was seen as a strong determinant of health status. All indicators reporting rates were age-standardized for easy interpretation. The following indicators have been highlighted for this LGA:

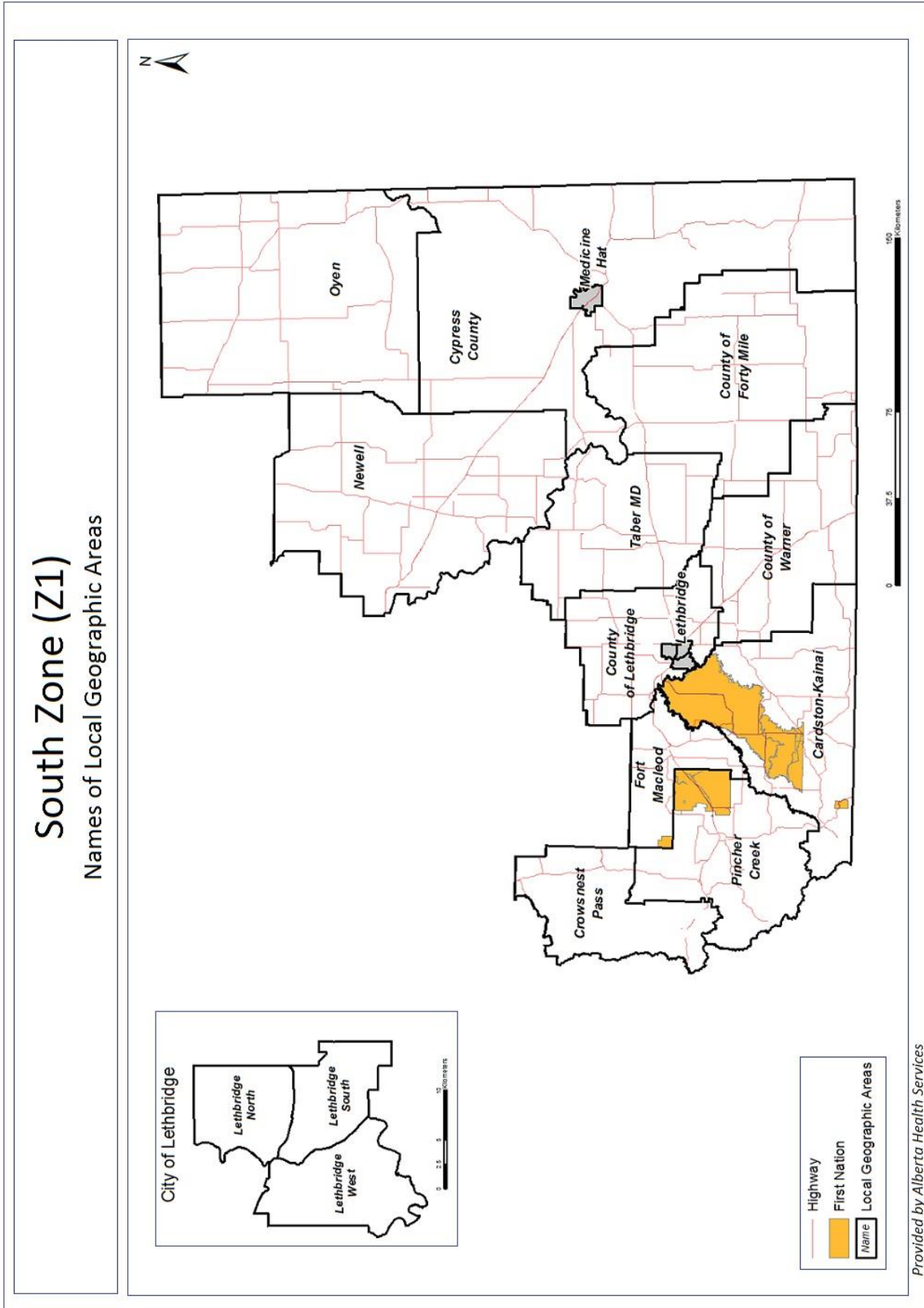
- The ambulatory care sensitive conditions (ACSC) separation rate per 100,000 population in Cypress County excluding Medicine Hat was 271.5 compared to the Alberta rate of 250.8. (Table 10.1)
- In Cypress County excluding Medicine Hat, the rate of people with three or more chronic diseases per 100 population was 5.0 compared to the Alberta rate of 4.1. (Table 10.1)
- The percentage of total family physician claims outside the recipient's home local geographic area in Cypress County excluding Medicine Hat was 91.0% compared to the Alberta percentage of 53.2%. (Table 10.1)
- Residents of this local geographic area had a life expectancy at birth of 80.9 years compared to 81.7 years for Alberta. (Table 10.1)

## ACCESS TO HEALTH CARE SERVICES

- Cypress County excluding Medicine Hat residents received ambulatory care services at facilities located outside the LGA. In 2020/2021, these visits made up 100.0% (or 18,748 visits) of all ambulatory care visits and most such visits (i.e. 83.1% of all external visits) were to the Medicine Hat Regional Hospital in Medicine Hat (LGA of Medicine Hat). (Tables 11.1 and 11.2)
- In 2020/2021, inpatient separations outside the LGA made up 100.0% (or 800) of all inpatient separations for Cypress County excluding Medicine Hat residents and most of them (i.e. 79.5% of all external inpatient separations) occurred at the Medicine Hat Regional Hospital in Medicine Hat (LGA of Medicine Hat). (Tables 11.1 and 11.2)

## Zone Level Information

*This section contains information presented at the highest geographic breakdown level before rolling up to a full provincial view. The map of Alberta has been partitioned into five geographic zones (Calgary Zone, Central Zone, Edmonton Zone, North Zone, and South Zone), representing the health zones within Alberta Health Services. A variety of health indicators are unique to this section and are only captured at this level of geography due to either sampling and variability errors, or unavailability of data at the level of local geographical areas.*



## Alberta South Zone

### POPULATION HEALTH INDICATORS

Table 1.1 shows the zone-level population distribution compared to the province, by age group and gender, as at Mar 31 of the most recent fiscal year available. Children under the age of one were defined as infants, while the pediatric age group consists of all minors excluding infants. People with no age information available were categorized as unknown.

**TABLE 1.1** Zone versus Alberta Population Covered<sup>1</sup>, as at March 31, 2021

	South			Alberta <sup>2</sup>		
	Population					
	Female	Male	Total	Female	Male	Total
	156,401	156,097	312,498	2,207,830	2,230,952	4,438,782
Percentage Distribution of Population by Age Groups						
Age Group	Female	Male	Total	Female	Male	Total
Infants: Under 1	0.6%	0.6%	1.2%	0.5%	0.6%	1.1%
Pediatric: 1-17	10.8%	11.3%	22.1%	10.2%	10.7%	20.9%
18-34	11.2%	11.8%	23.1%	11.4%	12.0%	23.4%
35-64	18.3%	18.4%	36.7%	20.1%	20.4%	40.5%
65-79	6.7%	6.1%	12.8%	5.6%	5.2%	10.8%
80 & Older	2.5%	1.7%	4.2%	1.9%	1.3%	3.2%
Unknown	0.0%	0.0%	0.0%	0.0%	0.0%	0.0%

As at March 31, 2021, the largest age group was 35-64 year olds, accounting for 36.7% of the overall population in the South Zone and 40.5% of the population in Alberta. Children 17 and under comprised 23.3% of South Zone's overall population, compared to 22.0% for Alberta. In addition, residents 65 and older accounted for 17.0% of South Zone's overall population, 2.9 percentage points higher than the corresponding provincial proportion.

Table 1.2 shows zone-level health status indicators compared to the province for the two most recent calendar years available.

**TABLE 1.2** Health Status Indicators for Zone versus Alberta Residents, 2019 and 2020

		South			Alberta		
		Body Mass Index (BMI) <sup>3</sup>					
Category* (BMI range)	Year	Female	Male	Total	Female	Male	Total
Normal Weight (18.50 -24.99)	2019	29.9%	19.8%	25.1%	39.7%	25.1%	33.0%
	2020	32.0%	26.1%	29.5%	38.6%	25.9%	32.4%
Over Weight (25.00-29.99)	2019	38.1%	53.1%	44.5%	31.7%	47.5%	38.9%
	2020	37.0%	40.2%	38.2%	31.6%	43.1%	37.1%
Obese (≥30.00)	2019	31.6%	27.1%	30.2%	26.0%	26.8%	26.4%
	2020	29.2%	32.7%	30.9%	27.7%	29.8%	28.8%

\*The "Under Weight" category is excluded from the table due to small sample size.

**TABLE 1.2** Health Status Indicators for Zone versus Alberta Residents, 2019 and 2020 (continued)

		South			Alberta		
Mental Health before (2019) and during (2020) COVID <sup>3</sup>							
Category	Year	Female	Male	Total	Female	Male	Total
Good, Very Good or Excellent	2019	86.6%	89.1%	87.7%	87.3%	90.4%	88.7%
	2020	70.2%	79.0%	74.6%	67.3%	77.5%	72.1%
Poor or Fair	2019	13.4%	10.9%	12.3%	12.7%	9.6%	11.3%
	2020	29.8%	21.0%	25.4%	32.7%	22.5%	27.9%
Smoking <sup>3</sup>							
Daily/occasional smokers	2019	19.7%	10.8%	14.8%	11.5%	14.8%	12.9%
	2020	14.3%	17.8%	16.3%	12.7%	14.8%	13.6%
Never/former smokers	2019	80.3%	89.2%	85.2%	88.5%	85.2%	87.1%
	2020	85.7%	82.2%	83.7%	87.3%	85.2%	86.4%
Self-Perceived Stress Tolerance <sup>3</sup>							
Excellent or Very Good	2019	55.0%	71.9%	62.9%	62.6%	65.3%	63.5%
	2020	62.2%	58.6%	60.2%	61.2%	67.4%	63.8%
Poor Fair or Good	2019	45.0%	28.1%	37.1%	37.4%	34.7%	36.5%
	2020	37.8%	41.4%	39.8%	38.8%	32.6%	36.2%

The percentage of obese adults (age 20-64, not pregnant) in the South Zone in 2020 was higher than the provincial percentage (30.9% vs. 28.8% AB). There was a higher proportion of people with good to excellent mental health compared to Alberta (74.6% vs. 72.1% AB) during the COVID-19 pandemic. In addition, a higher percentage of daily smokers was reported at the zone level compared to the province in 2020 (16.3% vs. 13.6% AB) and a much lower proportion considered themselves as having excellent or very good stress tolerance (60.2% vs. 63.8% AB).

Table 1.3 reports the infant mortality rates per 1,000 live births for the zone and the province, for the most recent calendar years available.

**TABLE 1.3** Zone versus Alberta Infant Mortality Rates (per 1,000 live births)  
Years 2018 - 2020

	South	Alberta
Infant Mortality Rate (per 1,000 births) <sup>3</sup>		
2018	3.8	4.9
2019	4.5	4.2
2020	5.0	5.1

The infant mortality rates in the South Zone varied between 3.8 per 1,000 births in 2018 and 5.0 per 1,000 births in 2020. Compared to Alberta, infant mortality rates in the South Zone were higher for 1 of the 3 calendar years.

**Sources:** Alberta Community Health Survey Files<sup>3</sup>

Alberta Health Care Insurance Plan (AHCIP) Annual Population Registry Files, Alberta Health

Postal Code Translator File, Alberta Health

Alberta Vital Statistics Births and Deaths Files

**Notes** <sup>1</sup> Population covered represents number of people covered under the Alberta Health Care Insurance Plan (AHCIP)

<sup>2</sup> Alberta population figure was calculated based on valid Alberta postal codes.

<sup>3</sup> See Appendix A for definition.

**Methodology:**

Details on methodology can be found on Interactive Health Data Application ([http://www.ahw.gov.ab.ca/IHDA\\_Retrieval/](http://www.ahw.gov.ab.ca/IHDA_Retrieval/))

## COMMUNITY MENTAL HEALTH

Table 1.4 shows the zone-level versus Alberta, distribution of individuals accessing community mental health services, by age group and gender, as at Mar 31 of the most recent fiscal year available. Children in the pediatric age group consists of all minors. Note that the Alberta total numbers include individuals who could not be allocated to any zone due to missing residential geographic information.

**TABLE 1.4** Zone versus Alberta Community Mental Health Access by Age Group and Gender, 2020/2021

	South			Alberta		
	Distinct Individuals <sup>1</sup>					
	Female	Male	Total	Female	Male	Total
	5,171	3,906	9,077	65,341	54,147	119,488
Percentage Distribution of Distinct Individuals by Age Groups						
Age Group	Female	Male	Total	Female	Male	Total
Pediatric: 1-17	10.9%	8.0%	18.9%	11.4%	9.6%	21.1%
18-34	20.3%	14.4%	34.8%	18.2%	14.5%	32.8%
35-64	21.3%	18.0%	39.3%	19.5%	17.4%	36.9%
65+	4.4%	2.6%	7.0%	5.6%	3.7%	9.3%

As of March 31, 2021, a total of 9,077 patients accessed Community Mental Health services in the South Zone. Of this number, there were 5,171 females and 3,906 males. The majority of those accessing these services in the Zone belonged to the following age groups: 1-17 (18.9%), 18-34 (34.8%), and 35-64 (39.3%), compared to Alberta: 1-17 (21.1%), 18-34 (32.8%), and 35-64 (36.9%).

Table 1.5 shows zone-level community mental health utilization by treatment service type compared to the province for the most recent fiscal year available.

**TABLE 1.5** Zone versus Alberta Community Mental Health Access by Service Type, 2020/2021

	South	Alberta
Distinct Individuals within Treatment Service Type		
Addiction Residential <sup>2</sup>	152 (1.6%)	1,271 (1.0%)
Detox <sup>2,3</sup>	351 (3.6%)	2,834 (2.2%)
Opioid Dependency Program <sup>2,4</sup>	199 (2.0%)	4,043 (3.2%)
Outpatient <sup>2,5</sup>	9,077 (92.8%)	119,488 (93.6%)

Outpatient community mental health treatment services had the highest volumes in the South Zone (9,077 (92.8%)), compared to Alberta (119,488 (93.6%)). The percentage of individuals for a given treatment type is a proportion of the total number of Community Mental Health services accessed in the Zone. It is possible for an individual to have accessed multiple treatment types in the Zone within the fiscal year.

**Sources:** Alberta Health Services Data Repository (AHSDDRX), Postal Code Translator File

Addiction System for Information and Service Tracking (ASIST)  
Alberta Regional Mental Health Information System (ARMHIS)  
Clinical Activity Reporting Application (CARA)  
Community Geographic Information System (CGIS)  
Calgary Diversion Service Database (Diversion)  
Geriatric Mental Health Information System (GMHIS)  
Mobile Crisis Information System (MCIS)

*Regional Access and Intake System (RAIS)*

*eClinician, Edmonton Zone*

*Meditech, South Zone*

**Notes** <sup>1</sup> *Distinct Individuals: patients who access Community Mental Health services during the fiscal year are counted only once regardless of how many services they accessed during this time.*

<sup>2</sup> *See Appendix A for definition.*

<sup>3</sup> *Detox include individuals receiving withdrawal management services and those who are not assigned beds but only screened and/or referred to the nearest emergency department or treatment other than withdrawal management services.*

<sup>4</sup> *Opioid Dependency Program numbers do not include one program (Cardston Opioid Dependency Program) in the South Zone due to data availability issues.*

<sup>5</sup> *All outpatient treatment service types may not be offered in all zones. Unscheduled outpatient treatment (e.g., crisis intervention and single session/walk-in) may be under-reported due to data limitations.*

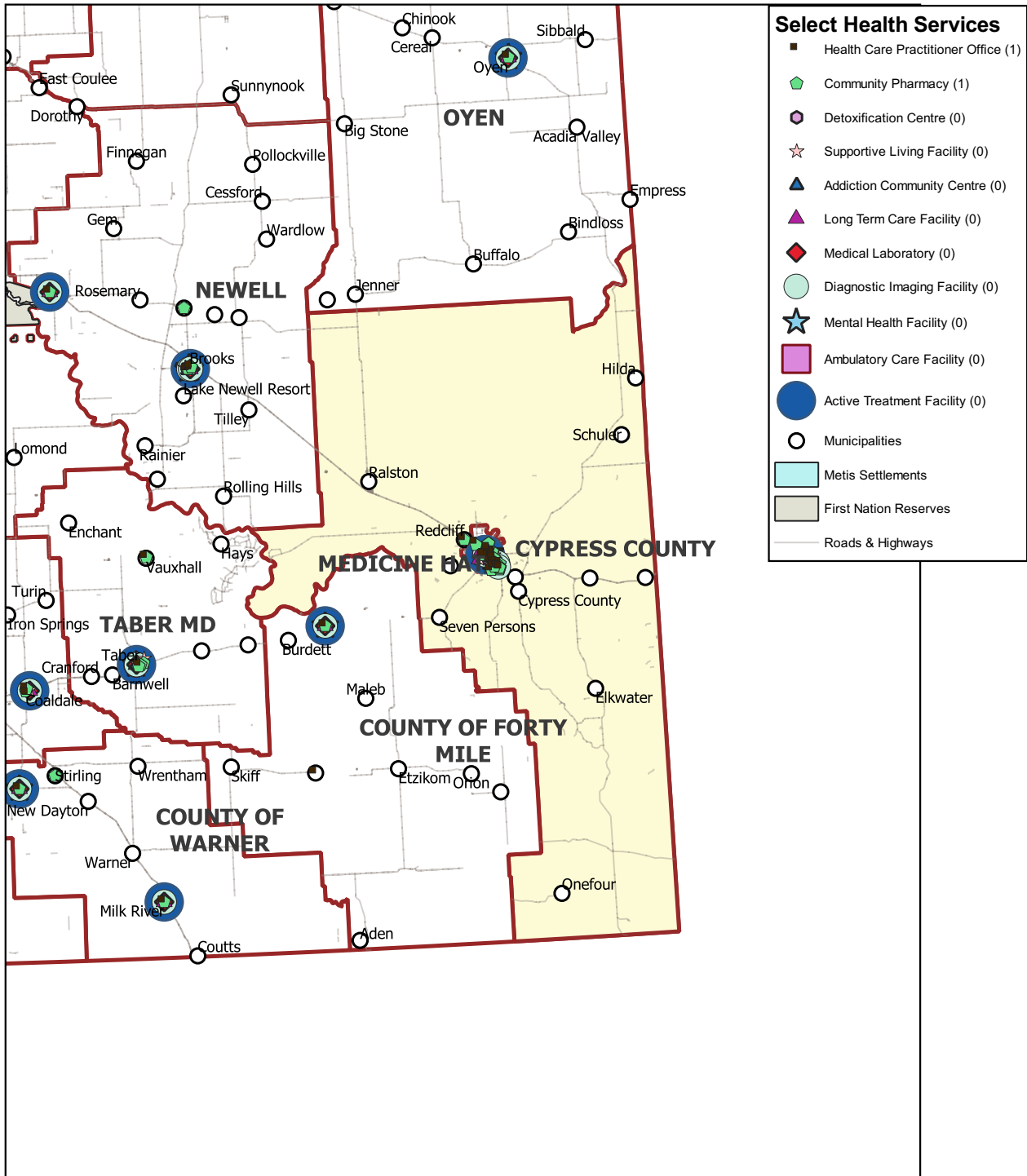


## Local Geographic Area Level Information

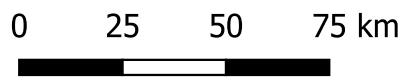
*This section contains information presented at the level of the local geographic area and is more granular than the information at the zone level. Local geographic area refers to 132 geographic areas created by Alberta Health (AH) and Alberta Health Services (AHS) based on census boundaries. The Federal Census (2016) information is custom extracted by Statistics Canada at the local geographic area level. The population of these areas varies from very small in rural areas to large in metropolitan centres.*

## Map of Selected Health Services in Local Geographic Area of Cypress County excluding Medicine Hat

Population (2021): 11,223



Prepared by the Analytics and Performance Reporting Branch, Alberta Health, June 2022. Note: For additional details regarding the selected health service facilities in the above map please refer to Appendix D



## Local Geographic Area: Cypress County

### DEMOGRAPHICS

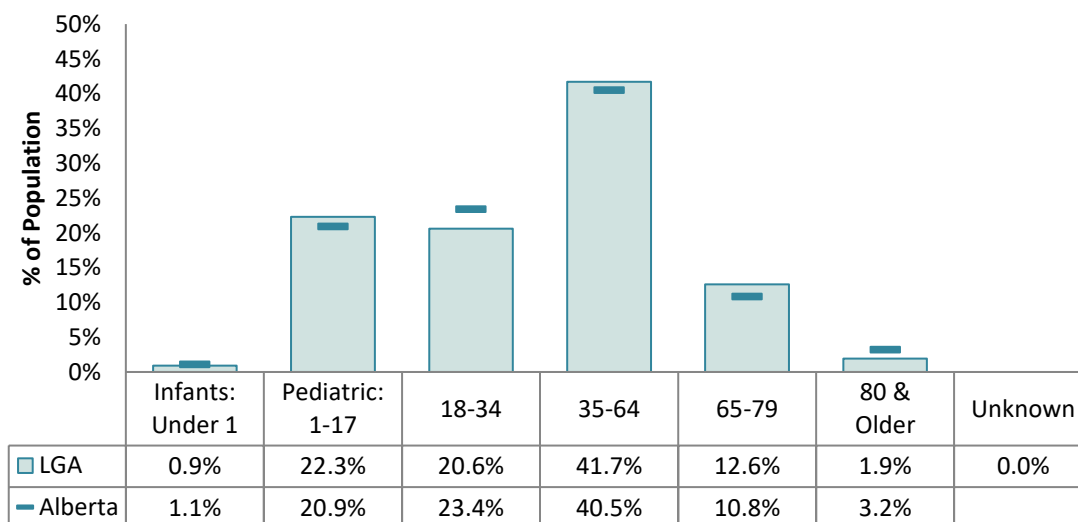
Table 2.1 shows the population distribution of the local geographic area broken down by age group and gender, as at March 31 of the most recent fiscal year available. Specific age groups have been identified. Children under the age of one were defined as infants, while the pediatric age group includes all minors excluding infants. People with no age information available were categorized as unknown.

**TABLE 2.1** Distribution of Population Covered<sup>1</sup> by Age and Gender  
As at March 31, 2021

Local Geographic Area Population			
Age Group	Female	Male	Total
Infants: Under 1	49	52	101
Pediatric: 1-17	1,188	1,316	2,504
18-34	1,116	1,196	2,312
35-64	2,312	2,368	4,680
65-79	685	727	1,412
80 & Older	97	117	214
Unknown	0	0	0
<b>Total</b>	<b>5,447</b>	<b>5,776</b>	<b>11,223</b>

Figure 2.1 profiles the population distribution by age group for both the local geographic area and Alberta, as at March 31 of the most recent fiscal year available.

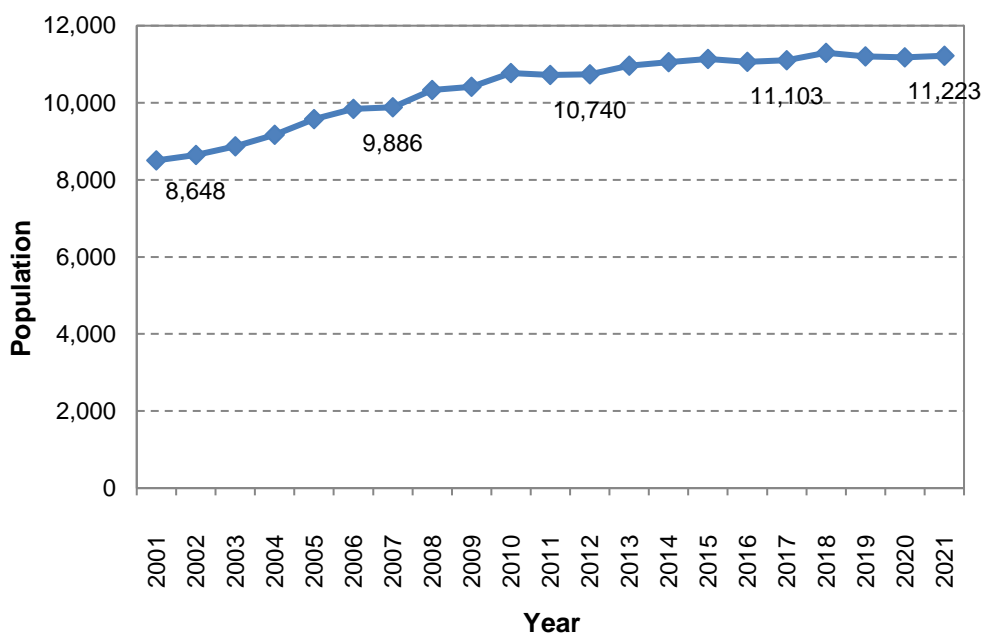
**FIGURE 2.1** Percentage Distribution of Local Geographic Area (LGA) versus Alberta Population  
By Age Group as at March 31, 2021



As at March 31, 2021, the largest age group was 35-64 year olds, accounting for 41.7% of the overall population. Children 17 and under comprised 23.2% of Cypress County's overall population, compared to 22.0% for Alberta. In addition, residents 65 and older accounted for 14.5% of Cypress County's overall population, similar to the corresponding provincial proportion.

The population counts as at March 31 of each year, between 2001 and the most recent year are provided in Figure 2.2.

**FIGURE 2.2** Local Geographic Area Population Covered as at End (i.e. Mar 31) of Fiscal Years 2001 - 2021



The population of Cypress County increased by 32.0% between 2001 and 2021. A low of 8,503 individuals was reported in 2001 and a peak of 11,297 people was reported in 2018.

**Sources:**

Alberta Health Care Insurance Plan (AHCIP) Annual Population Registry File, Alberta Health  
 Postal Code Translator File, Alberta Health

**Notes:**

<sup>1</sup> Population covered represents number of people covered under the Alberta Health Care Insurance Plan (AHCIP) subject to a weighting that will ensure the total population for each age and sex will equal the Statistics Canada total.

## Local Geographic Area: Cypress County

### SOCIAL DETERMINANTS OF HEALTH INDICATORS

Tables 3.1 and 3.2 highlight a number of indicators relating to social determinants of health such as family income, housing and educational attainment. Values for the local geographic area and Alberta are listed as proportions, raw numbers, or dollar amounts, depending on the indicator.

**TABLE 3.1** Population Percentage of First Nations with Treaty Status<sup>1</sup> and Inuit as at March 31, 2018

First Nations with Treaty Status and Inuit Population		
	Cypress County	Alberta
Percent of Population that is First Nations or Inuit	0.4%	2.8%

**TABLE 3.2** Social Determinants of Health Indicators<sup>2</sup> for Local Geographic Area versus Alberta Residents 2016

Family Composition		
	Cypress County	Alberta
Percent (Number of) Male Lone-Parent Families	3.1% (120)	3.3% (37,060)
Percent (Number of) Female Lone-Parent Families	6.5% (255)	11.0% (123,195)
Percent (Number of) 65 Years of Age and Older Who Are Primary Household Maintainers	18.8% (910)	18.7% (285,060)
Percent (Number of) Lone-Parent Census Families (≥3 Children)	12.2% (45)	11.5% (18,425)
Percent (Number of) Visible Minority for the Population in Private Households	2.1% (275)	23.5% (933,165)
Average Number of Persons per Census Family	3.0	3.0
Family Income		
	Cypress County	Alberta
Percent (Number) of Families with After-Tax Low-Income <sup>1</sup>	14.7% (715)	15.6% (239,080)
Percent (Number) of Private Households with an After-Tax Income ≥ \$100,000 in 2015	33.4% (1,620)	37.1% (566,195)
Average Census Family Income	\$107,761	\$116,343
Housing		
	Cypress County	Alberta
Percent Living in Owned Dwellings	82.6%	72.4%
Percent Where Greater Than 30% of Income Is Spent on Housing for Homeowners	14.1%	15.1%
Average Value of Dwelling	\$382,636	\$449,790
Percent of Homeowners Who Have Homes in Need of Major Repairs	6.4%	5.7%
Percent Living in Rented Dwellings	17.4%	27.0%
Percent Where Greater Than 30% of Income Is Spent on Housing for Renters	26.8%	36.0%
Percent Living in Band Housing <sup>1</sup>	0.0%	0.6%

Compared to Alberta, Cypress County had a lower proportion of First Nations people (0.4% vs. 2.8% AB). The proportion of female lone-parent families was lower than the provincial proportion (6.5% vs. 11.0% AB). In addition, the proportion of male lone-parent families in Cypress County was similar to the provincial proportion (3.1% vs. 3.3% AB).

Furthermore, a similar percentage of families had an after-tax low-income level compared to the province (14.7% vs. 15.6% AB). Compared to Alberta, the percentage of people who spent 30% or more of their income on housing related expenses for homeowners was 1.0 percentage points lower in Cypress County. In addition, a higher proportion of people in Cypress County lived in dwellings they owned (82.6% vs. 72.4% AB).

**TABLE 3.2** Social Determinants of Health Indicators<sup>2</sup> for Local Geographic Area versus Alberta Residents 2016 (Continued)

Mobility		
	Cypress County	Alberta
Percent who lived at the Same Address One Year Ago	90.1%	84.5%
Percent who lived at the Same Address Five Years Ago	65.9%	55.3%
Language		
	Cypress County	Alberta
Percent Who Do Not Speak English or French	0.8%	1.4%
Percent of Households Where a Non-Official Language Is Spoken at Home	4.6%	11.7%
Top Five Non-Official Languages Spoken at Home <sup>3</sup>	German, Germanic languages, n.i.e., Punjabi (Panjabi), Spanish, and Korean	Tagalog (Pilipino, Filipino), Punjabi (Panjabi), Cantonese, Mandarin, and Spanish
Immigration		
	Cypress County	Alberta
Total Number of Immigrants	1,000	845,215
Percent of Immigrants Who Arrived in the Last Five Years	1.3%	5.2%
Top Five Places of Birth for Recent Immigrants <sup>4</sup>	Mexico, United Kingdom, United States, Republic of South Africa, and Philippines	Philippines, India, China, Pakistan, and Other places of birth in Africa
Educational Attainment		
	Cypress County	Alberta
Percent with No High School Graduation Certificate	15.7%	10.8%
Percent with High School Graduation Certificate	30.2%	25.2%
Percent with Apprenticeship, Trades Certificate or Diploma	15.4%	10.6%
Percent with College, Other Non-University Certificate, or Diploma	25.5%	22.0%
Percent with University Certificate, Diploma or Degree	13.2%	31.4%

**TABLE 3.2** Social Determinants of Health Indicators<sup>2</sup> for Local Geographic Area versus Alberta Residents  
2016 (Continued)

Household and Dwelling Characteristics		
	Cypress County	Alberta
Percent Persons in Private Households <sup>1</sup>	100.0%	100.0%
Total Number of Households by Household Type	4,845	1,527,680
Census Family Households	79.5%	70.6%
One-Family-Only Households	78.2%	68.2%
Two-or-More-Family Households	1.2%	2.3%
Non-Family Households	20.6%	29.4%
Total Number of Dwellings by Structural Type	4,845	1,527,680
Single-Detached House	85.0%	61.9%
Moveable Dwelling	6.6%	3.2%
Other Dwelling Including ≥5 Storey Apartment Buildings	8.4%	34.9%

Cypress County had a lower proportion of non-English and non-French speaking people compared to Alberta (0.8% vs. 1.4% AB). Also, a lower proportion of immigrants arrived in the last five years in Cypress County compared to the province (1.3% vs. 5.2% AB). Furthermore, Cypress County reported a lower proportion of people with university certificates, diplomas or degrees (13.2% vs. 31.4% AB).

**Sources:**

*Federal Census (2016) by LGA - Custom Extract, Statistics Canada*

*Postal Code Translator File, Alberta Health*

*Alberta Health Care Insurance Plan (AHCIP) Annual Population Registry Files, Alberta Health*

**Notes:**

<sup>1</sup> See Appendix A for definition.

<sup>2</sup> N/A indicates that data were not available for a specific metric for this LGA

<sup>3</sup> Less than five languages may be listed if no others were reported. Six or more languages may be listed in the case of ties.

<sup>4</sup> Less than five places of birth may be listed if no others were reported. Six or more places of birth may be listed in the case of ties. Since only a selected number of countries was included for each continent, categories like "Other places of birth in Continent X" may appear among the top 5 places of birth listed in Table 3.2; to better understand which countries are included in the "Other..." categories please refer to the list of selected counties that appeared distinctly in the data; countries not included in "Other..." but that could appear on their own are listed below:

*Africa: Algeria, Egypt, Ethiopia, Kenya, Morocco, Nigeria, Somalia, and South Africa*

*Americas (N, S and Central): Brazil, Colombia, El Salvador, Guyana, Haiti, Jamaica, Mexico, Peru, Trinidad and Tobago, and United States*

*Asia (incl. Middle East): Afghanistan, Bangladesh, China, Hong Kong, India, Iran, Iraq, Japan, Lebanon, Pakistan, Philippines, South Korea, Sri Lanka, Syria, Taiwan, and Vietnam*

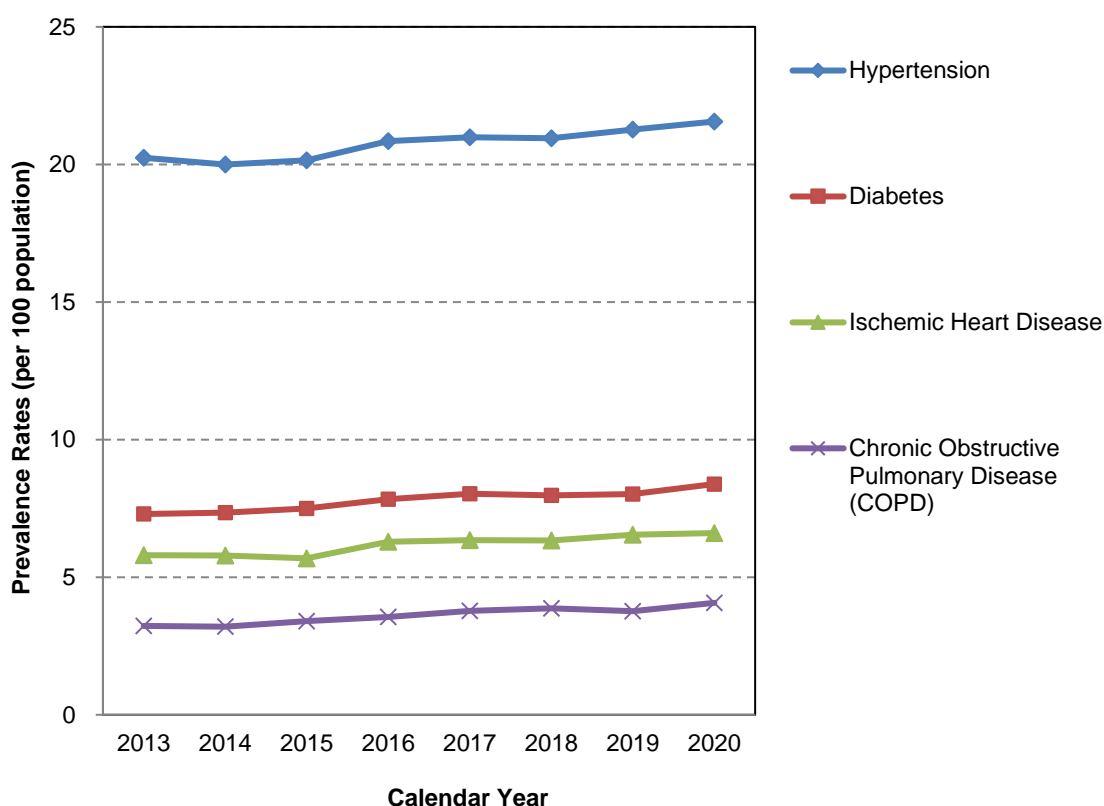
*Europe: Bosnia and Herzegovina, Croatia, France, Germany, Greece, Hungary, Ireland, Italy, Netherlands, Poland, Portugal, Romania, Russian Federation, Serbia, Ukraine, and United Kingdom*

## Local Geographic Area: Cypress County

### CHRONIC DISEASE PREVALENCE

Figure 4.1 displays the rates per 100 population of the selected chronic diseases in the local geographic area, by calendar year. The prevalence rates refer to the number of diagnosed individuals at a given time and have been standardized by age.

**FIGURE 4.1** LGA Age-Standardized Chronic Disease Prevalence Rates<sup>1</sup> (per 100 population) 2013 - 2020

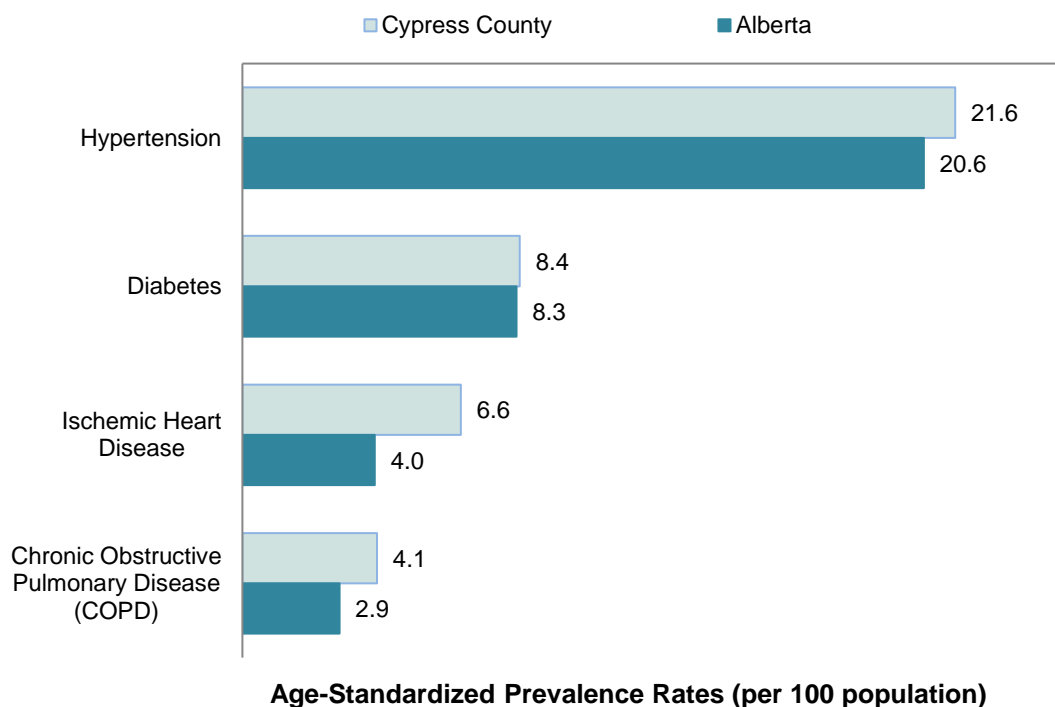


On average, the condition with the highest chronic disease prevalence rate reported for Cypress County during 2013 to 2020 was hypertension. The largest rate of change during this time period was reported for hypertension (on average, a 0.22 people per 100 population increase per year). In 2020, Cypress County ranked number 62 in hypertension, number 58 in diabetes, number 6 in ischemic heart disease and number 38 in COPD among prevalence rates reported for the 132 local geographical areas (note: a lower rank is desirable).



Figure 4.2 depicts the age-standardized prevalence rate of major chronic diseases, per 100 population, for the local geographic area compared to Alberta (most recent calendar year).

**FIGURE 4.2** LGA versus Alberta Age-Standardized Chronic Disease Prevalence Rates (per 100 population), 2020



In 2020, the Cypress County prevalence rate for hypertension per 100 population was similar to the corresponding rate reported for the province (21.6 vs. 20.6 AB). In addition, Cypress County showed prevalence rates higher than the provincial rates for 4 of the 4 chronic diseases included above.

**Sources:**

Alberta Health Care Insurance Plan (AHCIP) Physician Claims Data, Alberta Health  
 Alberta Health Care Insurance Plan (AHCIP) Quarterly Population Registry Files, Alberta Health  
 Alberta Hospital Discharge Abstract Database (DAD), Alberta Health  
 Postal Code Translator File, Alberta Health

**Notes:**

<sup>1</sup>Age-standardized prevalence rates are adjusted using the direct method of standardization, with weights from Statistics Canada's 2011 census population.

**Methodology:**

Details on methodology can be found on Interactive Health Data Application ([http://www.ahw.gov.ab.ca/IHDA\\_Retrieval/](http://www.ahw.gov.ab.ca/IHDA_Retrieval/))

## Local Geographic Area: Cypress County

### MATERNAL AND CHILD HEALTH

Table 5.1 highlights maternal and child health indicators such as birth weight, fertility rate, teen birth rate and prenatal smoking for the local geographic area and Alberta. The indicator information is presented as rates, percentages, or raw numbers, depending on the indicator.

**TABLE 5.1** Local Geographic Area Maternal and Child Health Indicators for the period 2018/2019 - 2020/2021

Maternal and Child Health Indicators	Three-Fiscal-Year Period	Cypress County	Alberta
Number of Births	2018/2019 - 2020/2021	323	151,553
Percent Low Birth Weights (of Live Births) <sup>1</sup> , less than 2500 gm		5.0%	7.2%
Percent High Birth Weights (of Live Births) <sup>1</sup> , greater than 4000 gm		14.9%	8.2%
Birth Rate (per 1,000 population) <sup>1</sup>		19.8	23.1
Fertility Rate (per 1,000 Women 15 to 49 Years) <sup>1</sup>		42.7	47.4
Teen Birth Rate (per 1,000 Women 15 to 19 Years)		8.2	6.9
Percent of Deliveries with Maternal Prenatal Smoking		9.2%	9.5%

During 2018/2019 to 2020/2021, Cypress County's birth rate of 19.8 per 1,000 women was lower than the provincial rate, and the teen birth rate of 8.2 per 1,000 was similar to Alberta's teen birth rate. In addition, a similar proportion of prenatal smoking cases were reported in Cypress County compared to the province (9.2% vs. 9.5% AB).

Table 5.2 presents the rates for childhood immunization coverage by the age of two for the local geographic area and Alberta. The data is provided for the most recent calendar year available.

**TABLE 5.2** Childhood Immunization Coverage Rates 2020

Age Group	Calendar Year	Cypress County	Alberta
<b>DTaP-IPV-Hib (Diphtheria, Tetanus, Pertussis, Polio and Haemophilus Influenza B)</b>			
<b>Dose 4 of 4</b>			
By Age Two	2020	59.4%	77.8%
<b>MMR (Measles, Mumps, and Rubella)</b>			
By Age Two	2020	79.5%	87.9%

By the age of two, 59.4% of children in Cypress County (in 2020) had been vaccinated against DTaP-IPV-Hib (compared to 77.8% for AB), while 79.5% had received MMR vaccines (compared to 87.9% for AB).

**Sources:**

*Alberta Hospital Discharge Abstract Database (DAD), Alberta Health*  
*Alberta Health Care Insurance Plan (AHCIP) Annual Population Registry File, Alberta Health*  
*Alberta Vital Statistics Births File*  
*Regional Immunization Applications*  
*Immunization and Adverse Reaction to Immunization (Imm/ARI)*  
*Postal Code Translator File, Alberta Health*

**Notes:**

<sup>1</sup> See Appendix A for definition.

**Methodology (Childhood Immunizations):**

*Details on methodology can be found on Interactive Health Data Application ([http://www.ahw.gov.ab.ca/IHDA\\_Retrieval/](http://www.ahw.gov.ab.ca/IHDA_Retrieval/))*

## Local Geographic Area: Cypress County

### SEXUALLY TRANSMITTED INFECTIONS

Table 6.1 lists the rates of Sexually Transmitted Infections (STI) for the most recent three-fiscal-year periods available, for the local geographic area and Alberta.

**TABLE 6.1** Top 5 Sexually Transmitted Infection (STI)<sup>1</sup> Rates (per 100,000 population)  
By Three-Fiscal-Year Period

STI (per 100,000 population)			
Three-Fiscal-Year Period	Disease	Cypress County	Alberta
2017/2018 - 2019/2020	Chlamydia	228.6	394.3
	Gonorrhea	35.6	117.0
	Non-Gonococcal Urethritis	8.9	44.1
	Infectious Syphilis	3.0	37.6
	Mucopurulent Cervicitis	0.0	6.8
2018/2019 - 2020/2021	Chlamydia	235.1	367.2
	Gonorrhea	38.7	113.6
	Non-Gonococcal Urethritis	6.0	40.6
	Mucopurulent Cervicitis	0.0	6.6
	Infectious Syphilis	0.0	52.1

Cypress County's highest STI rate per 100,000 population in 2018/2019 - 2020/2021 was reported for chlamydia and this rate was lower than the provincial rate (235.1 vs. 367.2 AB).

None of the top 5 STI rates in Cypress County were higher than the provincial rates for STIs in 2018/2019 - 2020/2021.

**Sources:**

*Alberta Health Care Insurance Plan (AHCIP) Annual Population Registry Files, Alberta Health  
Communicable Disease Reporting System (CDRS)  
Postal Code Translator File, Alberta Health*

**Notes:**

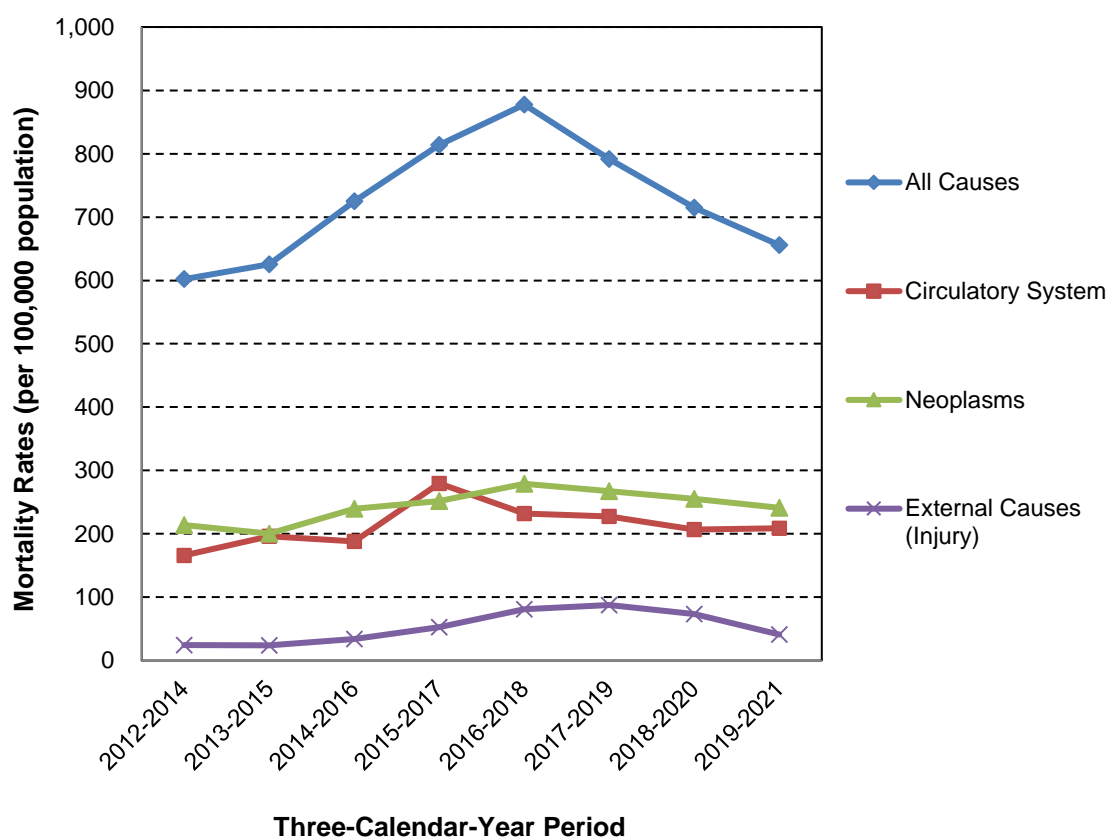
<sup>1</sup> See Appendix A for definition.

## Local Geographic Area: Cypress County

### MORTALITY

Figure 7.1 displays the age-standardized mortality rates<sup>1</sup>, per 100,000 population, for the three selected causes of death and all causes combined. Data is provided for each three-calendar-year period between 2012 and 2021. The age-standardized mortality rate by cause of death is a measure of the frequency (rate) at which deaths occur in a given population due to a certain cause.

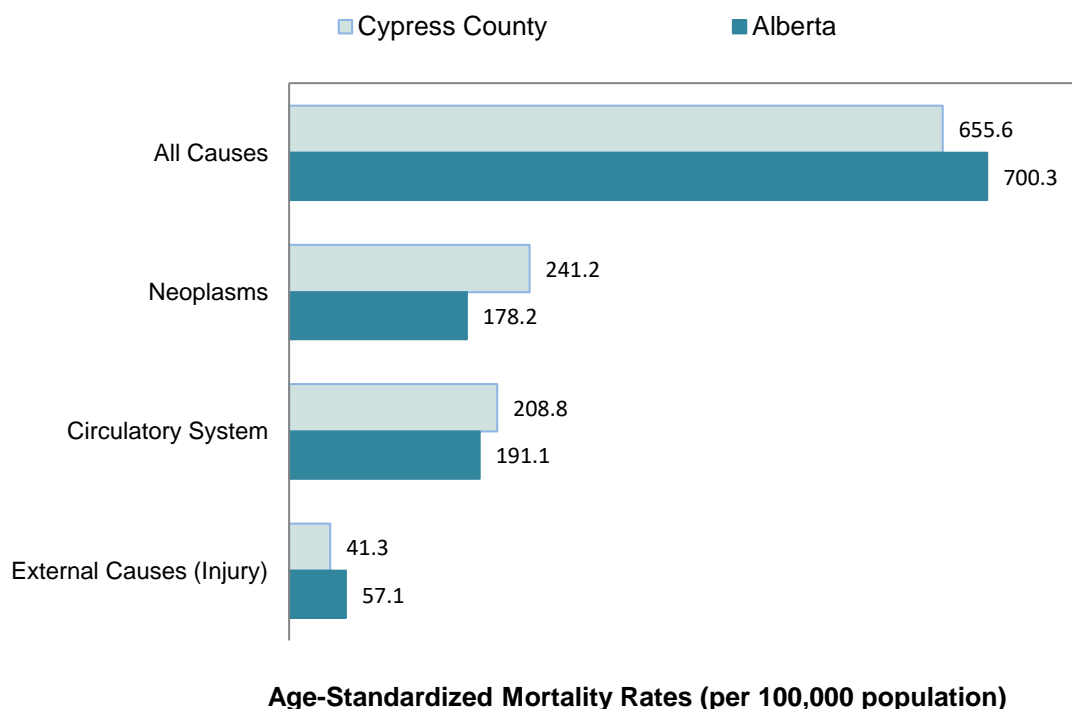
**FIGURE 7.1** Local Geographic Area Age-Standardized Mortality Rates<sup>1</sup> (per 100,000 population) By Three-Calendar-Year Period



The three-year mortality rates for Cypress County ranged between 602.1 and 877.6 per 100,000 population during the study period. The three selected causes of death, namely, neoplasms, diseases of the circulatory system, and external causes accounted for 63.4% to 77.3% of all deaths from 2012 - 2014 to 2019 - 2021.

The mortality rates per 100,000 population for the three selected causes of death<sup>2</sup> and all causes combined are displayed in Figure 7.2 for both the local geographic area and Alberta, for the most recent three-calendar-year period available. The mortality rates have been standardized by age.

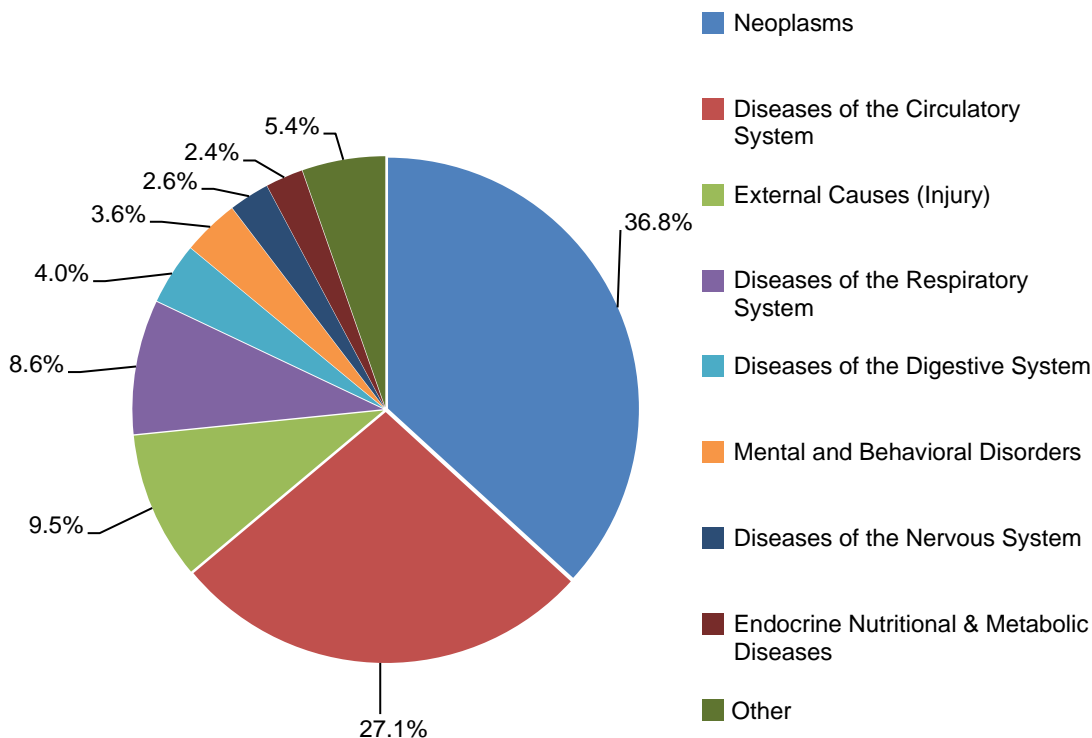
**FIGURE 7.2** Local Geographic Area versus Alberta Age-Standardized Mortality Rates (per 100,000 population) for Three-Calendar-Year Period 2019-2021



For all causes, Cypress County reported a lower mortality rate compared to the provincial rate (655.6 vs. 700.3 AB). In 2019 - 2021, neoplasms was the main cause of death in Cypress County, with an associated mortality rate higher than the provincial rate per 100,000 population (241.2 vs. 178.2 AB). In addition, mortality rates were higher than the provincial rates for 2 of the 3 selected causes of death reported in Cypress County.

Figure 7.3 illustrates the distribution of deaths by cause of death (top 8 causes) for the local geographic area, over the most recent 10-calendar-year period available. All other causes of death are lumped into the "Other" category. As such, this category may include different causes of death from report to report. The legend displays causes of death in descending order of magnitude.

**FIGURE 7.3** LGA Distribution of Deaths by Cause of Death Across 10 Calendar Years, 2011-2021



Between 2011 and 2021 neoplasms accounted for 36.8% of all deaths reported in Cypress County. More than three-quarters of all reported deaths were due to four major causes: neoplasms, diseases of the circulatory system, external causes (injury), and diseases of the respiratory system.

**Sources:**

Alberta Vital Statistics Death File  
Alberta Health Care Insurance Plan (AHCIP) Quarterly Population Registry Files, Alberta Health  
Postal Code Translator File, Alberta Health

**Notes:**

<sup>1</sup>Age-standardized mortality rates are adjusted using the direct method of standardization, with weights from Statistics Canada's 2011 census population.

<sup>2</sup> Cause of death is derived from International Classification of Diseases 10 (ICD10) coding system.

## Local Geographic Area: Cypress County

### EMERGENCY SERVICE UTILIZATION (PART A: BY CTAS LEVEL)

Table 8.1 describes emergency visits by Canadian Triage and Acuity Scale (CTAS) level<sup>1</sup>, for patients residing in the local geographic area, for the three most recent fiscal years.

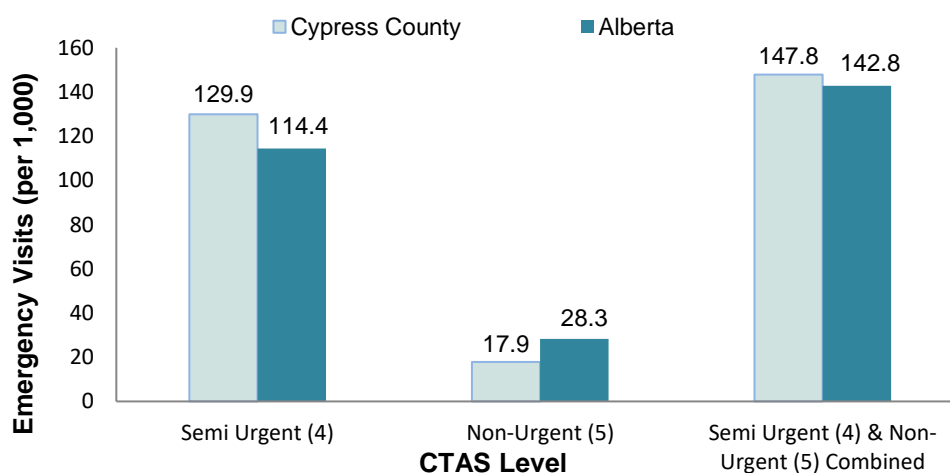
**TABLE 8.1** Emergency Visits for Patients Residing in the Local Geographic Area by CTAS Level  
Fiscal Years 2018/2019 - 2020/2021

CTAS Level	Emergency Visits		
	2018/2019	2019/2020	2020/2021
Resuscitation (1) and Emergency (2) Combined	574 (12.2%)	720 (15.3%)	612 (16.3%)
Urgent (3)	1,797 (38.2%)	1,833 (38.9%)	1,441 (38.5%)
Semi Urgent (4)	2,038 (43.3%)	1,912 (40.6%)	1,458 (38.9%)
Non-Urgent (5)	277 (5.9%)	228 (4.8%)	201 (5.4%)
Unknown	23 (0.5%)	19 (0.4%)	35 (0.9%)
<b>Total</b>	<b>4,709 (100%)</b>	<b>4,712 (100%)</b>	<b>3,747 (100%)</b>

The volume of emergency visits for patients residing in Cypress County decreased by 20.4% between 2018/2019 and 2020/2021. In addition, semi-urgent and non-urgent visits combined accounted for 44.3% of all emergency visits in 2020/2021, an increase of -28.3% from 2018/2019.

Figure 8.1 shows emergency visit rates by semi-urgent and non-urgent CTAS levels for patients residing in the local geographic area and Alberta, for the most recent fiscal year available.

**FIGURE 8.1** Emergency Visit Rates<sup>1</sup> (per 1,000 population) for CTAS Levels Semi-Urgent (4) and Non-Urgent (5)<sup>2</sup>, Fiscal Year 2020/2021

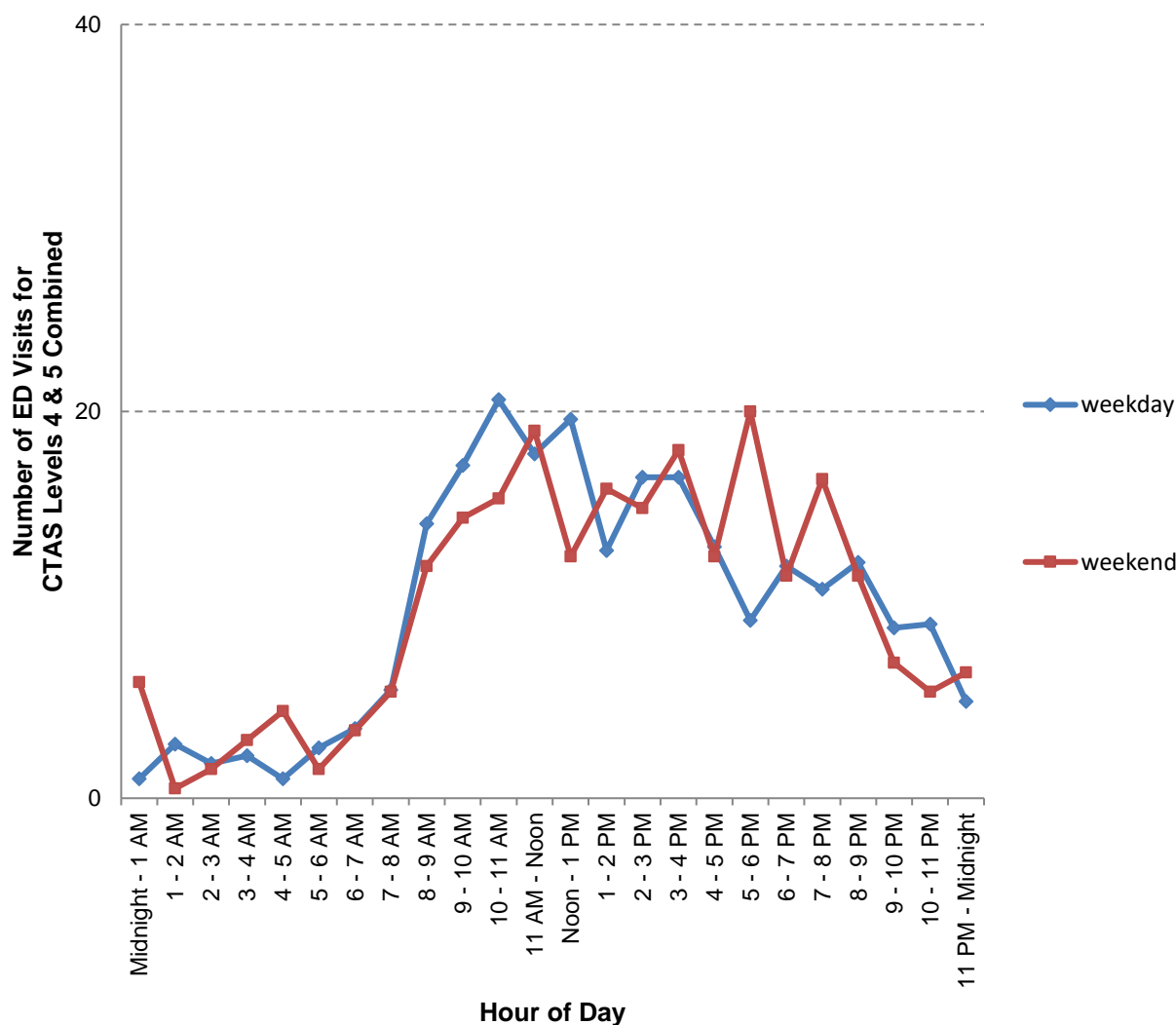




Cypress County's combined semi-urgent and non-urgent emergency visit rate per 1,000 population was comparable to the provincial rate in 2020/2021 (147.8 vs. 142.8 AB). Semi-urgent emergency visits occurred at a 1.1 times higher rate in Cypress County compared to Alberta (129.9 vs. 114.4 AB).

A time profile of the average number of emergency visits by weekday/weekend is shown in Figure 8.2. Data covers both semi-urgent and non-urgent emergency visit CTAS levels during the most recent fiscal year available, for patients residing in the local geographic area.

**FIGURE 8.2** Total Hourly Number of Emergency Visits for Patients Residing in the LGA For CTAS Levels Semi-Urgent(4) and Non-Urgent(5) Combined, by Weekday/Weekend (Fiscal Year 2020/2021).



The peak hourly total number of emergency visits for Cypress County in 2020/2021 was reported for weekdays between 10 - 11 AM (21 emergency visits). That is, there was a total of 21 visits reported between 10 - 11 AM on a regular weekday day, during this year. The hourly total number of emergency visits for both weekdays and weekends was low between midnight and early morning hours, increased gradually afterwards, and declined considerably late at night.

**Sources:**

*Ambulatory Care Data, Alberta Health*

*Alberta Health Care Insurance Plan (AHCIP) Annual Population Registry File, Alberta Health*

*Postal Code Translator File, Alberta Health*

**Notes:**

<sup>1</sup> See Appendix A for definition.

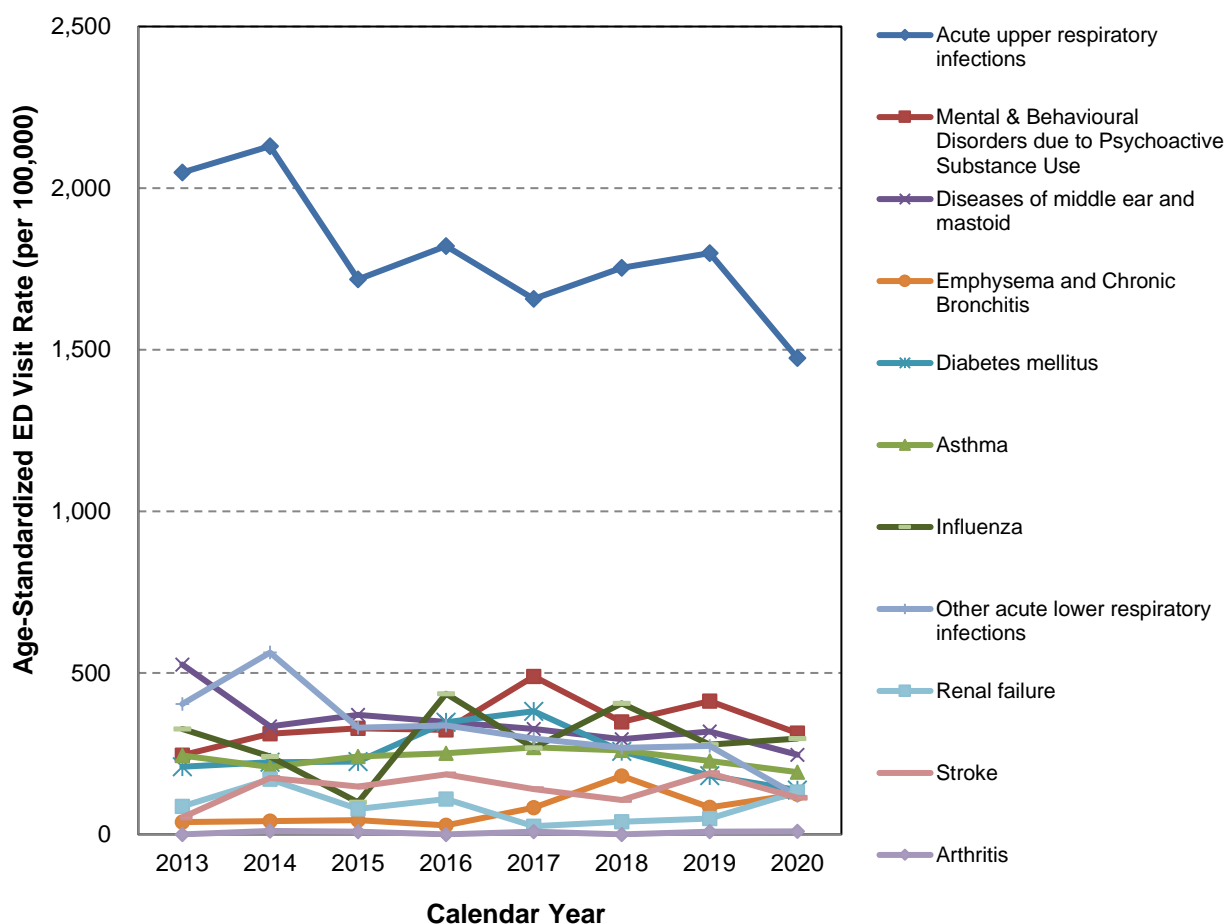
<sup>2</sup> In order to be consistent with the type of services expected to be provided by primary health care, the analysis above focused only on semi-urgent and non-urgent emergency CTAS levels.

## Local Geographic Area: Cypress County

### EMERGENCY SERVICE UTILIZATION (PART B: ALL EMERGENCY VISITS)

Figure 8.3 provides age-standardized emergency visit rates<sup>1</sup> for selected health conditions per 100,000 population for each calendar year beginning in 2013. Emergency department visit rates are defined as the number of visits to emergency departments due to a certain condition, divided by the total population of the local geographic area.

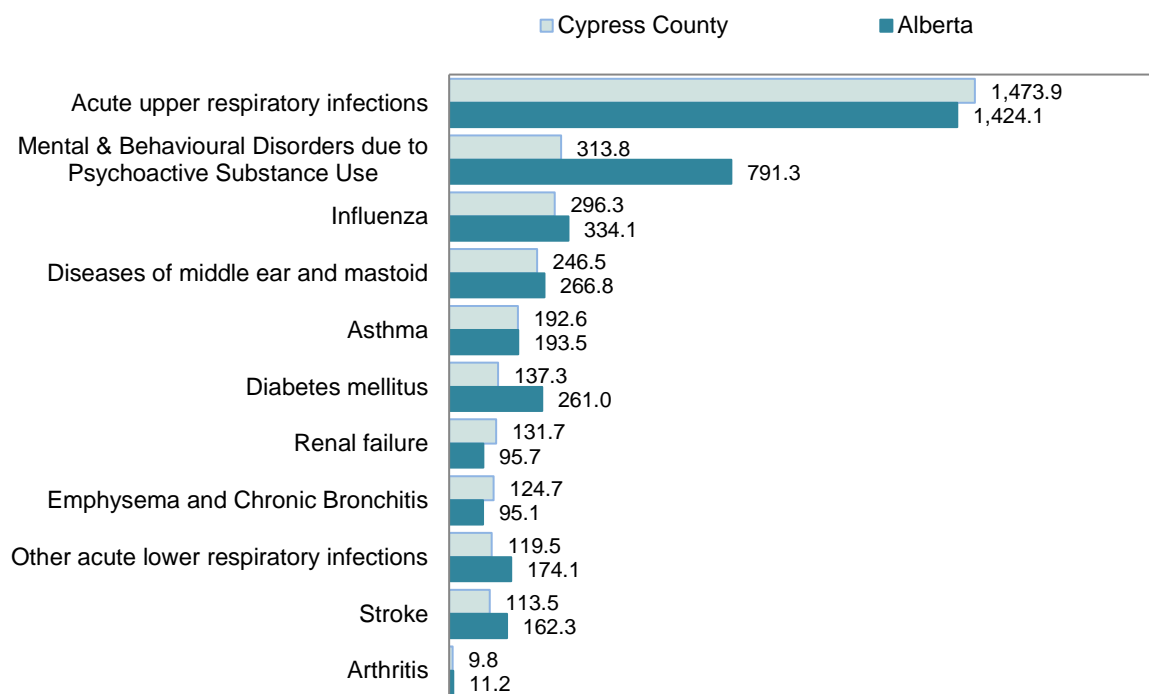
**FIGURE 8.3** LGA Age-Standardized<sup>2</sup> Emergency Visit Rates (per 100,000 population)  
For Selected Conditions, 2013 - 2020



On average, the highest emergency visit rates for selected health conditions reported for Cypress County during 2013 to 2020 were due to acute upper respiratory infections. In addition, among selected health conditions, the largest rate of change among emergency visits during this time period was reported for acute upper respiratory infections (on average, a 68 emergency visits per 100,000 population decrease per year).

Age-standardized emergency visit rates per 100,000 population, by selected health conditions, for the most current calendar year available, are shown in Figure 8.4 for both the local geographic area and Alberta.

**FIGURE 8.4** LGA versus Alberta Age-Standardized Emergency Visit Rates (per 100,000 population) For Selected Conditions, Calendar Year 2020



**Age-Standardized Emergency Rates (per 100,000 population)**

In 2020, the three most common reasons for emergency visits, among selected health conditions, were: acute upper respiratory infections, mental & behavioural disorders due to psychoactive substance use, and influenza. Among selected health conditions, the most common reason for emergency visits in 2020, acute upper respiratory infections, had a similar rate in Cypress County compared to the provincial rate per 100,000 population (1,473.9 vs. 1,424.1 AB). Furthermore, Cypress County showed emergency rates higher than the provincial rates for 3 of the 11 selected conditions.

**Sources:** Ambulatory Care Data, Alberta Health  
Alberta Health Care Insurance Plan (AHCIP) Quarterly Population Registry Files, Alberta Health  
Postal Code Translator File, Alberta Health

**Notes:** <sup>1</sup> See Appendix A for definition.

<sup>2</sup> Age-standardized rates are adjusted using the direct method of standardization, with weights from Statistics Canada's 2011 census population.

**Methodology:**

Details on methodology can be found on Interactive Health Data Application ([http://www.ahw.gov.ab.ca/IHDA\\_Retrieval/](http://www.ahw.gov.ab.ca/IHDA_Retrieval/))

## Local Geographic Area: Cypress County

### INPATIENT SERVICE UTILIZATION

Table 9.1 describes yearly inpatient separation<sup>1</sup> (IP Sep) rates per 100,000 population for patients residing in the LGA as well as Alberta. The rate of inpatient separations is the ratio between the total number of separations and the total local population.

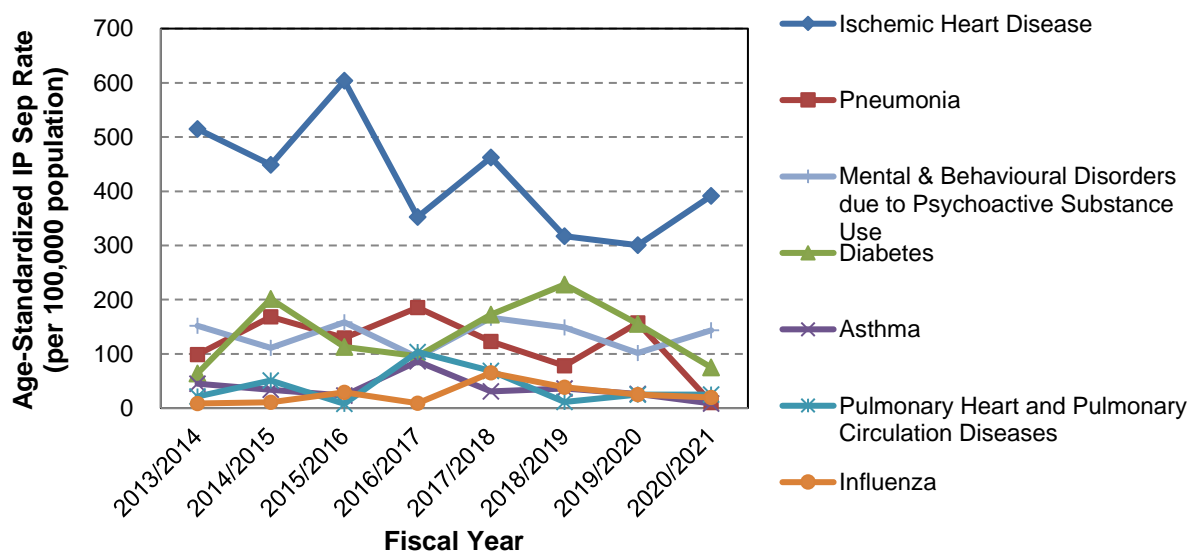
**TABLE 9.1** Inpatient Separation Rates (per 100,000 population) for Patients Residing in the LGA versus Alberta, Fiscal Years 2018/2019 - 2020/2021

Inpatient Separation Rates (per 100,000 population)		
Fiscal Years	Cypress County	Alberta
2018/2019	9,273.6	8,525.4
2019/2020	8,259.5	8,402.3
2020/2021	7,217.5	7,386.6

Cypress County's inpatient separation rate for patients residing in the local geographic area varied between 7,217.5 in 2020/2021 and 8,259.5 in 2019/2020. In addition, in 2020/2021, the inpatient separation rate for patients residing in Cypress County was 98% of the provincial rate (7,217.5 vs. 7,386.6 AB).

Figure 9.1 presents IP Sep rates for selected health conditions (per 100,000 population), for patients residing in the local geographic area, for the fiscal years 2013/2014 through 2020/2021. The rates have been standardized by age.

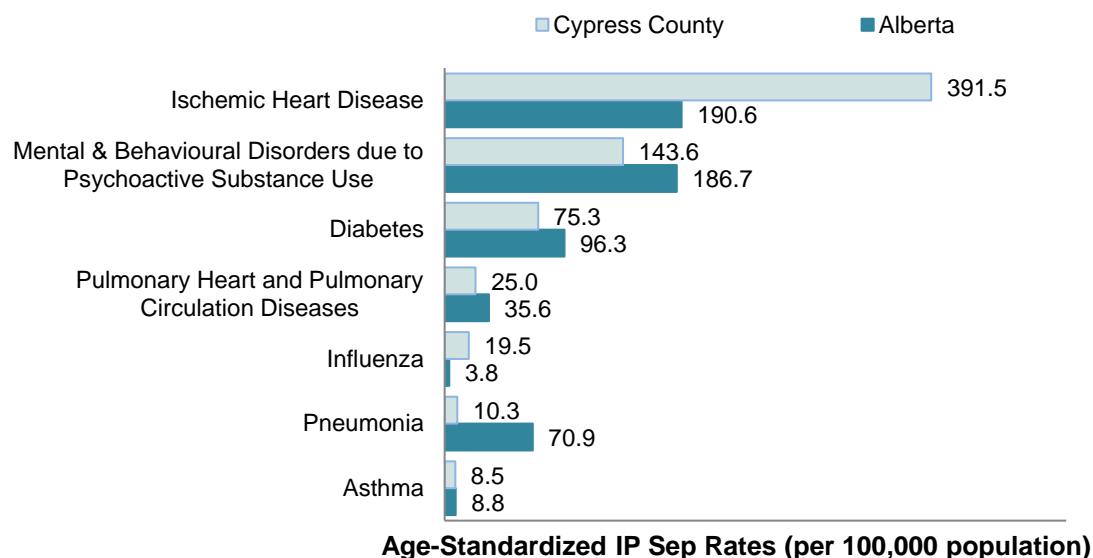
**FIGURE 9.1** LGA Age-Standardized<sup>2</sup> Inpatient Separation Rates (per 100,000 population) For Selected Conditions, 2013/2014 - 2020/2021



On average, the highest inpatient separation rates, among selected health conditions, reported in Cypress County during 2013/2014 to 2020/2021 were due to ischemic heart diseases. These rates reached a high of 603.8 per 100,000 population in 2015/2016 and a low of 300.5 per 100,000 population in 2019/2020. Also, among selected conditions, the largest inpatient separation rate of change during this time period was reported for ischemic heart diseases (on average, a 28 inpatient separation per 100,000 population decrease per year).

Figure 9.2 presents inpatient separation rates per 100,000 population for patients residing in the local geographic area, compared to provincial rates, for the most recent fiscal year and selected health conditions.

**FIGURE 9.2** LGA versus Alberta Age-Standardized Inpatient Separation Rates (per 100,000 population) For Selected Conditions, 2020/2021



In 2020/2021, the three highest inpatient separation rates were reported for ischemic heart disease, mental & behavioural disorders due to psychoactive substance use, and diabetes. The most common reason for inpatient separations in Cypress County was ischemic heart disease, which had a much higher rate compared to the provincial rate per 100,000 population (391.5 vs. 190.6 AB). Additionally, Cypress County's inpatient separation rates were higher than the provincial rates for 2 of the 7 diagnoses.

**Sources:**

Alberta Hospital Discharge Abstract Database (DAD), Alberta Health  
Alberta Health Care Insurance Plan (AHCIP) Quarterly Population Registry Files, Alberta Health  
Postal Code Translator File, Alberta Health

**Notes:** <sup>1</sup> See Appendix A for definition.

<sup>2</sup>Age-standardized rates are adjusted using the direct method of standardization, with weights from Statistics Canada's 2011 census population.

**Methodology:**

Details on methodology can be found on Interactive Health Data Application ([http://www.ahw.gov.ab.ca/IHDA\\_Retrieval/](http://www.ahw.gov.ab.ca/IHDA_Retrieval/))

## Local Geographic Area: Cypress County

### PRIMARY HEALTH CARE INDICATORS OF COMMUNITY PRIMARY CARE NEED

As a result of consultations and analysis during the fall of 2016, 12 indicators were identified to help determine the need for new or additional primary health care services across all local geographic areas throughout Alberta. These indicators were related to health service utilization and the health needs of the population. The indicators are standardized by age, where appropriate, to allow comparison of information across local geographic areas and the province. The bullets below present the underlying issues that these indicators will address.

- Health status indicators help show the burden of disease in the population that could be monitored and/or improved by primary health care services.
- Utilization indicators determine if there is a gap between population health needs and available health care services and suggests where this gap exists (e.g. use of emergency departments for non-urgent health care).

Table 10.1 profiles recent data for these indicators for both the local geographic area (LGA) and Alberta. The LGA indicator value is compared to the Alberta average.

**TABLE 10.1** Primary Health Care Indicators of Community Primary Care Need

Utilization Indicators		Cypress County	Alberta
1	Travel: Percentage of LGA's Recipients' Family Physician Claims Reported Outside of the LGA, 2020/2021	91.0%	53.2%
2	Number of Family Physicians (per 1,000 Population), 2020/2021	0.1	1.2
3	Ambulatory Care Sensitive Conditions - Age-Standardized Separation Rate (per 100,000 population), 2020/2021	271.5	250.8
4	General Practice Care Sensitive Conditions - Age-Standardized Rate (per 100,000 population), 2020/2021	4,178.2	6,643.5
5	ED Visits Related to Mood and Anxiety Disorders - Age-Standardized Rate (per 100,000 population), 2020/2021	934.0	1,095.0
6	ED Visits Related to Substance Abuse - Age-Standardized Rate (per 100,000 population), 2020/2021	589.6	1,316.1
7	ED Readmissions within 30 Days of Discharge from Hospital - Age-Standardized Rate (per 100,000 population), 2020/2021	1,032.2	1,204.0

**TABLE 10.1** Proposed Primary Health Care Indicators of Community Primary Care Need (continued)

Health Status Indicators <sup>1</sup>		Cypress County	Alberta
8	Age-Standardized Rate of People with Three or more Chronic Diseases (per 100 population), 2020/2021	5.0	4.1
9	Percentage of Influenza Vaccines for Those 65 and Over, 2020/2021	56.5%	61.5%
Social Determinant of Health		Cypress County	Alberta
10	Average Canadian Deprivation Index (per 100 population), 2013	10.8	7.3
11	SES: Percentage of People Receiving Support, in the Population, 2020/2021	21.1%	24.0%
12	Life Expectancy at Birth, 2011 to 2020	80.9	81.7

Each of the 12 indicators displayed for Cypress County excluding Medicine Hat is described below. Higher values are desirable for indicators 2, 9 and 12. The reverse holds for the nine remaining indicators.

**Indicator 1: Percentage of LGA's Recipients' Family Physician Claims Outside of the LGA**

The percentage of total Family Physician claims outside the recipient's home local geographic area is a proxy for access to primary care services. While the indicator provides values for all LGAs, the values are more informative for rural or remote areas (as travel inside urban areas has different meaning and impact).

**Indicator 2: Number of Family Physicians**

This indicator measures the number of active Family Physicians per 1,000 population in the LGA. This indicator can be linked to continuity of care, access to care, wait times and general patient satisfaction. Physicians directly influence how most health care resources are utilized. Information on physician supply and distribution will help support health decision-makers and planners to prepare for future needs.

**Indicator 3: Ambulatory Care Sensitive Conditions**

The Canadian Institute of Health Information (CIHI) has recognized ambulatory care sensitive conditions (ACSC) separation rates as a valid proxy indicator for the robustness of a primary care system. The ACSC indicator measures the aggregate acute care separation rate, per 100,000 population, over one year for the following seven conditions. Of these, the following six conditions have been included in the current indicator: Angina, Asthma, Congestive Heart Failure, Chronic Obstructive Pulmonary Disorder, Diabetes and Hypertension. A disproportionately high rate is presumed to reflect problems in obtaining access to appropriate primary care. Note that in rural areas, a limitation of this indicator is that it reflects differences in access to physicians.



#### **Indicator 4: General Practice Care Sensitive Conditions**

The General Practice Care Sensitive Conditions indicator measures the aggregate emergency department (ED) or urgent care centre visits rate for health conditions that may be appropriately managed at a family physician's office. Treatment of such conditions at family physician offices allows for proper follow up and better patient outcomes. A disproportionately high rate is presumed to reflect problems in obtaining access to appropriate primary care.

#### **Indicator 5: ED Visits Related to Mood and Anxiety Disorders**

This indicator measures the number of ED visits related to mood and anxiety disorders, per 100,000 population. A higher rate of ED visits related to mood and anxiety disorders may be an indication of inadequate community resources or difficulties accessing care in the community. Most ED visits related to mood and anxiety disorders can be avoided if individuals with these condition have access to comprehensive outpatient and community based recovery-focused services.

#### **Indicator 6: ED Visits Related to Substance Abuse**

This indicator measures the number of ED visits related to substance abuse disorders, per 100,000 population. A higher rate of ED visits related to substance abuse may be an indication of inadequate community resources or difficulties accessing care in the community. These ED visits can be avoided by improving access to primary care and specialized community services and supports. Individuals with these conditions who are treated in primary care are less likely to show up in the ED. More substance abuse related ED visits happening outside office hours may indicate the need for after-hour primary care services, which would be a better source of care than having patients with these conditions utilize the ED.

#### **Indicator 7: ED Readmissions within 30 Days of Discharge from Hospital**

As described by CIHI, this is the risk-adjusted rate of unplanned readmission for non-elective return to an acute care hospital for any cause that occurs within 30 days of discharge from the primary hospitalization. Urgent, unplanned readmissions to acute care facilities are increasingly being used to measure quality of care and care coordination. While not all unplanned readmissions are avoidable, interventions during and after a hospitalization can be effective in reducing readmission rates.

#### **Indicator 8: People with Three or More Chronic Diseases**

Interdisciplinary care and coordination of services is required for patients with multiple chronic conditions. This indicator tracks the proportion of patients with three or more chronic conditions which may include: asthma, congestive heart failure, COPD, dementia, diabetes, hypertension, and/or ischemic heart disease.

#### **Indicator 9: Percentage of Influenza Vaccines for Those 65 and Over**

The percentage of influenza vaccines administered annually to 65 year olds and over is an important primary health care indicator of preventive services delivered through primary health care. The data for this indicator includes immunizations delivered by community pharmacists and physicians to 65 year olds and older.

### **Indicator 10: Average Canadian Deprivation Index (CDI)**

Estimates for the CDI are derived from the Canadian Community Health Survey (CCHS). The CDI is an individual level measure of material deprivation, based on home ownership, education, and food security in the CCHS. Values range from 1 (most well off) to 5 (most deprived). The indicator reports the percentage of the CCHS sample within the LGA, for material deprivation levels 4 & 5 of the CDI.

### **Indicator 11: SES Percentage of People Receiving Support, in the Population**

This indicator measures the percentage of low-income earners who benefit from the prescription drug subsidy under the "Low-Income Health Benefits Program", which is a Government-sponsored supplementary health benefit programs.

### **Indicator 12: Life Expectancy at Birth**

The life expectancy at birth correlates highly with determinants of health and is a good predictor of future health related costs. This measure is considered a significant indicator of overall population health.

#### **Sources:**

*Interactive Health Data Application (IHDA), Surveillance and Assessment Branch, Alberta Health*  
*Alberta Health Care Insurance Plan (AHCIP) Physician Claims Data, Alberta Health*  
*Stakeholder Registry File, Alberta Health*  
*Alberta Hospital Discharge Abstract Database (DAD), Alberta Health*  
*Ambulatory Care Data, Alberta Health*  
*Alberta Health Care Insurance Plan (AHCIP) Quarterly Population Registry Files, Alberta Health*  
*Postal Code Translator File, Alberta Health*  
*Alberta Blue Cross Claims Data, Alberta Health*  
*Immunization and Adverse Reaction to Immunization (Imm/ARI) System, Alberta Health*  
*Pharmaceutical Information Network (PIN), Alberta Health*  
*Alberta Blue Cross, Publically-Funded Pharmacy Influenza Immunization Program*

**Notes:** <sup>1</sup> See Appendix A for definition.

## Local Geographic Area: Cypress County

### ACCESS TO HEALTH SERVICES

Table 11.1 provides the number of ambulatory care visits or inpatient separations made by local area residents to facilities within the local geographic area as well as facilities outside of the area. The data is provided for the most recent fiscal year available.

**TABLE 11.1** Ambulatory Care Visits and Inpatient Separations for the Local Geographic Area Residents To Facilities Located In versus Out of the Local Geographic Area, Fiscal Year 2020/2021

Ambulatory Care Visits				
Visits Within Local Area of Residence (IN)	Visits Outside Local Area of Residence (OUT)	Total Visits	Percent IN	Percent OUT
0	18,748	18,748	0.0%	100.0%
Inpatient Separations (IP Sep)				
Seps Within Local Area of Residence	Seps Outside Local Area of Residence	Total IP Sep	Percent IN	Percent OUT
0	800	800	0.0%	100.0%

Table 11.2 focuses on ambulatory care visits or inpatient separations made by local area residents to the top three accessed non-local facilities. Of particular interest is the percentage of non-local visits to, or separations from, each of the three facilities out of all non-local visits or separations. These percentages appear in the last column of the table below. The data is provided for the most recent fiscal year available.

**TABLE 11.2** Top 3 Non-Local Ambulatory Care Facilities/ Acute Care Hospitals Accessed by Local Residents Fiscal Year 2020/2021

Local Residents Accessing Non-Local Ambulatory Care Facilities				
Ambulatory Care Facility Name	Facility Municipality	Facility LGA	Number of OUT Visits	% of Total OUT Visits
Medicine Hat Regional Hospital	Medicine Hat	Medicine Hat	15,583	83.1%
Foothills Medical Centre	Calgary	Calgary - Centre North	805	4.3%
Alberta Children's Hospital	Calgary	Calgary - Lower NW	726	3.9%

**TABLE 11.2** Top 3 Non-Local Ambulatory Care Facilities/ Acute Care Hospitals  
Accessed by Local Residents Fiscal Year 2020/2021 (continued)

Local Residents Accessing Non-Local Acute Care Hospitals				
Hospital Name	Hospital Municipality	Hospital LGA	Number of OUT IP Sep	% of Total OUT IP Sep
Medicine Hat Regional Hospital	Medicine Hat	Medicine Hat	636	79.5%
Foothills Medical Centre	Calgary	Calgary - Centre North	78	9.8%
Peter Lougheed Centre	Calgary	Calgary - Upper NE	18	2.3%

**Sources:**

*Ambulatory Care Data, Alberta Health*

*Alberta Hospital Discharge Abstract Database (DAD), Alberta Health*

*Alberta Health Care Insurance Plan (AHCIP) Annual Population Registry File, Alberta Health*

*Postal Code Translator File, Alberta Health*

## Definitions

## Appendix A

### Addiction Residential

This refers to community based addiction treatment delivered in a residential setting through structured programs with fixed length (e.g., 20 day residential treatment program at Northern Addictions Centre) including intensive individual and group counselling, information sessions, skill based workshops, recreation and leisure activities and participation in self-help groups.

### After-Tax Low Income Measure

In simple terms, the Low-income measure after tax (LIM-AT) is a fixed percentage (50%) of median adjusted after-tax income of households observed at the person level, where 'adjusted' indicates that a household's needs are taken into account. Adjustment for household sizes reflects the fact that a household's needs increase as the number of members increase, although not necessarily by the same proportion per additional member.

The LIMs derivation begins by calculating the 'adjusted household income' for each household by dividing household income by the square root of the number of persons in the household, otherwise known as the 'equivalence scale.' This adjusted household income is assigned to each individual in the private household, and the median of the adjusted household income (where half of all individuals will be above it and half below) is determined over the population. The LIM for a household of one person is 50% of this median, and the LIMs for other sizes of households are equal to this value multiplied by their equivalence scale.

Unlike other low income lines, LIMs do not vary by size of area of residence. (Statistics Canada) Thresholds for specific household sizes can be found at the following location:  
<https://www12.statcan.gc.ca/nhs-enm/2011/ref/dict/table-tableau/t-3-2-eng.cfm>

### Age Standardization

Age standardization is a technique applied to make rates comparable across groups with different age distributions. A simple rate is defined as the number of people with a particular condition divided by the whole population. An age-standardized rate is defined as the number of people with a condition divided by the population within each age group. Standardizing (adjusting) the rate across age groups allows a more accurate comparison between populations that have different age structures. Age standardization is typically done when comparing rates across time periods, different geographic areas, and or population sub-groups (e.g. ethnic group). Direct standardization was used for all analyses in this Community Profile, where standardization applies.

### Alberta Community Health Survey (ACHS)

The Alberta Community Health Survey is a telephone or web based survey aimed to collect data on specific determinants of health among Albertans 18 years and older.

For more information on ACHS-based indicators, go to the following link:  
[http://www.ahw.gov.ab.ca/IHDA\\_Retrieval/selectCategory.do](http://www.ahw.gov.ab.ca/IHDA_Retrieval/selectCategory.do)

## Band Housing

For historical and statutory reasons, shelter occupancy on reserves does not lend itself to the usual classification by standard tenure categories. Therefore, a special category, band housing, has been created for 1991 Census products. Band housing also appears in the 1996, 2001, and 2006 Census products. In 2011, band housing appeared in the NHS Survey instead of the Census. (Statistics Canada)

## Birth Rate

The birth rate is the number of live births, of a given geographic area in a given year, per 1,000 population of the same geographic area in the same year. (Statistics Canada)

## Body Mass Index (BMI)

The BMI is a method of classifying body weights by health risk level, which is adopted by the World Health Organization (WHO). Guidelines were put in place by Health Canada to clearly define this index.

The BMI is computed as an individual's weight (in kilograms) divided by the square of their height (in meters). The standard BMI categories used are: underweight, normal, overweight and obese (classes I-III). For the purposes of this report, the following BMI categories were used:

BMI Categories	BMI Range
under weight	less than 18.50
normal weight	18.50 to 24.99
overweight	25.00 to 29.99
obese	30.00 or greater

Obesity has been linked with many chronic diseases, including hypertension, type 2 diabetes, cardiovascular disease, osteoarthritis and certain types of cancer. (Statistics Canada, Alberta Community Health Survey)

## Canadian Triage and Acuity Scale (CTAS)

The CTAS is a scale to categorize patients according to the type and severity of their initial presenting signs and symptoms at the Emergency Department that helps to determine priorities for treatment. The CTAS is used to determine the triage level. There are 5 levels, with level 1 being the most urgent and level 5 the least urgent.

### Triage Level 1 – Resuscitation

Patients are categorized as having conditions that are threats to life or limb (or imminent risk of deterioration) requiring immediate aggressive interventions.

### Triage Level 2 – Emergent

Patients are categorized as having conditions that are a potential threat to life, limb or function, requiring rapid medical intervention or delegated acts.

### Triage Level 3 – Urgent

Patients are categorized as having conditions that could potentially progress to a serious problem requiring emergency intervention. These conditions may be associated with significant discomfort or affecting ability to function at work or activities of daily living.

### Triage Level 4 – Less Urgent (Semi urgent)

Patients are categorized as having conditions that are related to patient age, distress, or potential for deterioration or complications and would benefit from intervention or reassurance within 1-2 hours.

### Triage Level 5 – Non Urgent

Patients are categorized as having conditions that may be acute but non-urgent as well as conditions which may be part of a chronic problem with or without evidence of deterioration. The investigation or interventions for some of these illnesses or injuries could be delayed or even referred to other areas of the hospital or health care system.

### Triage Level 9 – Unknown

The information regarding this particular level is included in the National Ambulatory Care Reporting System Manual available through CIHI.

## **Census**

The census is a survey that collects data from all the members of a population, whether it is people or businesses. The most common use of the term "Census" is the population Census of Canada which is taken at 5-year intervals which counts persons and households and a wide variety of characteristics. In fact, some of the Census questions are asked on a sample basis i.e. in the past every fifth household receives a long-form questionnaire asking additional questions.

For 2011, Statistics Canada did not use a mandatory long-form questionnaire as part of the census. Information previously collected by the mandatory long-form census questionnaire was collected as part of the new voluntary National Household Survey (NHS).

Collection of the NHS began within four weeks of the May 2011 Census. Approximately 4.5 million households received the NHS questionnaire.

The 2011 Census questionnaire consisted of the same eight questions that appeared on the 2006 Census short-form questionnaire, with the addition of two questions on language. (Statistics Canada)

## Census Family

A family as defined by the Census includes one of the following: a married couple (with or without children of either and/or both spouses), a common-law couple (with or without children of either and/or both partners) or a lone parent of any marital status, with at least one child.

A couple may be of opposite sex or same sex. A couple family with children may be further classified as either an intact family in which all children are the biological and/or adopted children of both married spouses or of both common-law partners, or a stepfamily with at least one biological or adopted child of only one married spouse or common-law partner and whose birth or adoption preceded the current relationship.

Stepfamilies, in turn may be classified as simple or complex. A simple stepfamily is a couple family in which all children are biological or adopted children of one, and only one, married spouse or common-law partner whose birth or adoption preceded the current relationship. A complex stepfamily is a couple family which contains at least one biological or adopted child whose birth or adoption preceded the current relationship.

These families contain children from:

- Each married spouse or common-law partner and no other children
- One married spouse or common-law partner and at least one other biological or adopted child of the couple
- Each married spouse or common-law partner and at least one other biological or adopted child of the couple. (Statistics Canada)

## Chinese, n.o.s. (not otherwise specified)

The 2011 census category 'Chinese, n.o.s.' includes responses of 'Chinese' as well as all Chinese languages other than Cantonese, Mandarin, Taiwanese, Chaochow (Teochow), Fukien, Hakka and Shanghainese. (Statistics Canada)

## Chronic Obstructive Pulmonary Disease (COPD)

The population aged 35 and over who reported being diagnosed by a health professional with chronic bronchitis, emphysema or COPD. (Statistics Canada, Canadian Community Health Survey)

COPD is a progressive disease that makes it hard to breathe. It can cause coughing that produces large amounts of mucus, wheezing, shortness of breath, chest tightness, and other symptoms. Cigarette smoking is the leading cause of COPD. Most people who have COPD smoke or used to smoke. Long-term exposure to other lung irritants (such as air pollution, chemical fumes, or dust) also may contribute to COPD.

## Detox

This refers to community based services with in-house medical supports and designated beds that provides assistance to clients with the detoxification (withdrawal) from their use of alcohol and other drugs in a safe and controlled setting. These services typically include health stabilization, assessment, referral, information sessions, introductions to self-help groups, and treatment planning. Detox is often followed by further residential or non-residential treatment.



## Emergency Department (ED) Visit Rate

The ED visit rate is the number of visits to the emergency department divided by the total population of the local geographic area.

## Fertility Rate

The fertility rate is the number of live births per 1,000 women of reproductive age (15 - 49 years) in a population per year. This is a more standardized way to measure fertility in a population than birth rate because it accounts for the percentage of women of reproductive age. (Statistics Canada)

## First Nations with Treaty Status

First Nation is a term that came into common usage in the 1970s to replace the word “Indian”. First Nations refers to individuals and to communities (or reserves) and their governments (or band councils). The term arose in the 1980s and is politically significant because it implies possession of rights arising from historical occupation and use of territory. Though no Canadian legal definition of this term exists (the Constitution refers to Indians), the United Nations considers First Nations to be synonymous with indigenous peoples.

Status Indian: A First Nations person who is registered according to the Indian Act's requirements and therefore qualifies for treaty rights and benefits. Non-Status Indian: A First Nations person who is not registered under the Indian Act, for whatever reason, according to the act's requirements and therefore does not qualify for the rights and benefits given to people registered as status Indians.

Starting in 1701, the British Crown entered into solemn treaties to encourage peaceful relationships between First Nations and non-Aboriginal people. Over the next several centuries, treaties were signed to define, among other things, the respective rights of Aboriginal people and governments to use and enjoy lands that Aboriginal people traditionally occupied. The Government of Canada and the courts understand treaties between the Crown and Aboriginal people to be solemn agreements that set out promises, obligations and benefits for both parties.

(Aboriginal Affairs and Northern Development Canada 2013; Government of Alberta, Indigenous Relations, 2013)

## Health Care Practitioners Office

A Health Care Practitioners Office is a physical location where registered, accredited or licensed Health Care Practitioners provide or supervise the provision of primary health services to individuals. Within the physical location, these services are provided in a specific area (functional centre). Health Care Practitioners include but are not limited to physicians, dentists, physiotherapists, chiropractors etc. (Delivery Site Registry, <https://iam1.health.alberta.ca/DSRWeb/searchSite.do>)

## Health Status

Health status is the level of health of the individual, group or population as subjectively assessed by the individual or by more objective measures. (Statistics Canada)

## High Birth Weight

Birth weight is the body weight of a baby at its birth. High birth weight is defined as live births with a weight of 4,500 grams or more, expressed as a percentage of all live births with known weight. (Statistics Canada, Vital Statistics, Birth Database)

## Hospitalization Rate

The hospitalization rate is the age-standardized rate of acute care hospitalization, per 100,000 population. (Canadian Institute for Health Information)

## Infant Mortality Rate

The infant mortality rate is infants who die in the first year of life, expressed as a count and a rate per 1,000 live births. (Statistics Canada, Vital Statistics, Birth and Death Databases)

## Inpatient

An inpatient is an individual who has been officially admitted to a hospital for the purpose of receiving one or more health services. (Canadian Institute for Health Information: MIS Standards 2011)

## Inpatient Separations (IP Seeps)

A separation from a health care facility occurs anytime a patient (or resident) leaves because of death, discharge, sign-out against medical advice, or transfer. The number of separations is the most commonly used measure of the utilization of hospital services. Separations, rather than admissions, are used because hospital abstracts for inpatient care are based on information gathered at the time of discharge.

## Inuit

Inuit are the Aboriginal people of Arctic Canada. As of Sept 2010, it is estimated that about 45,000 Inuit live in 53 communities in: Nunatsiavut (Labrador); Nunavik (Quebec); Nunavut; and the Inuvialuit Settlement Region of the Northwest Territories. Each of these four Inuit groups have settled land claims. These Inuit regions cover one-third of Canada's land mass. Please note that small numbers of Inuit people can be found in various other regions of Canada other than the four regions listed above.

The word "Inuit" means "the people" in the Inuit language called, Inuktitut and is the term by which Inuit refer to themselves. (Aboriginal Affairs and Northern Development Canada)

## Local Geographic Areas (LGAs)

To assist with primary health care planning, Alberta Health has developed a series of reports to provide a broad range of demographic, socio-economic, and population health statistics considered relevant to primary health care for communities across the province. Alberta Health Services divides the province into five large health service Zones, and these Zones are subdivided into smaller geographic areas called Local Geographic Areas (LGAs). These 132 LGAs reflect areas

where given populations live, work and receive most day-to-day services including commercial services and health care.

LGA is defined based on the multiple characteristics listed below.

- Population density
- Distance from urban centres or major rural centres that provide a variety of services (health and non-health)
- Local knowledge about the population, industry type, municipalities, resources, infrastructure, schools, etc.
- Travel patterns of populations seeking services (health and non-health)
- Place of work and commuting behaviours.

### Low Birth Weight

Birth weight is the body weight of a baby at its birth. Live births less than 5.5 pounds or 2500 grams at birth are considered as babies with low birth weight. Low birth weight is a key determinant of infant survival, health, and development. (Statistics Canada, Vital Statistics, Birth Database)

### Mental Health before and during COVID-19 Pandemic

Perceived mental health is a general indication of the number of people in the population suffering from some form of mental disorder, mental or emotional problems or distress, not necessarily reflected in self-perceived health. This data is collected through surveys where respondents are asked to rate their mental health as poor, fair, good, very good or excellent before and during COVID-19 Pandemic. (Alberta Community Health Survey)

### Mortality Rate by Cause of Death

The age-standardized mortality rate by cause of death is a measure of the frequency (rate) at which deaths occur in a given population due to a certain cause. The potential confounding effect of different age structures (i.e. across geographic boundaries or years) is reduced when comparing rates that have been age-adjusted. (Interactive Health Data Application, Alberta Health)

### Neoplasms

A neoplasm is an unusual new growth of tissue resulted by uncontrolled production of cells. These cells do not coordinate with normal cells and may appear abnormal compared to the normal cells. The term "tumor" is used to name a neoplasm that has formed a lump. Some neoplasms do not form lumps. The neoplasms that spread to the other parts of the body are commonly known as 'Cancers'. (<https://www.cancer.gov/about-cancer>)

### National Household Survey (NHS)

Between May and August 2011, Statistics Canada conducted the National Household Survey (NHS) for the first time. This voluntary, self-administered survey was introduced as a replacement for the long census questionnaire, more widely known as Census Form 2B. The NHS is designed to collect social and economic data about the Canadian population. The objective of the NHS is to provide data for small geographic areas and small population groups. For further details around sampling design, topics covered etc. please visit the link below: [https://www12.statcan.gc.ca/nhs-enm/2011/ref/nhs-enm\\_guide/guide\\_2-eng.cfm](https://www12.statcan.gc.ca/nhs-enm/2011/ref/nhs-enm_guide/guide_2-eng.cfm). (Statistics Canada)

## Opioid Dependency Program

This service provides methadone or Suboxone® maintenance treatment in a non-residential setting with psychosocial support. It is part of the opioid agonist treatment (OAT) available in Alberta and providers including physicians independent of AHS also offer OAT.

## Outpatient

This refers to non-residential treatment delivered in community clinics and hospital outpatient setting to help Albertans with substance use and mental health problems. Services include assessment, therapeutic interventions such as counselling and medication, outreach and day programs, and after care support. These services do not include overnight stays and can be provided by a multi-disciplinary team of therapists, psychiatrists, nurses and social workers. Examples of treatment types include brief intervention, urgent and crisis intervention, general (basic, short term) treatment, specialized treatment and rehabilitation.

## Prevalence Rate

Prevalence is a measure of disease that allows us to determine a person's likelihood of having a disease. Therefore, the number of prevalent cases is the total number of cases of disease existing in a population. A prevalence rate is the total number of cases of a disease existing in a population divided by the total population. (<https://www.health.ny.gov/diseases/chronic/basicstat.htm>)

## Primary Care

Primary care is the first point of contact that people have with the health care system for medical needs requiring treatment and referral to other services as needed and is usually provided by a family physician or other health care professional.

(<https://pcnpmo.ca/Pages/default.aspx>)

## Primary Care Networks

Primary Care Networks are groups of family doctors that work with Alberta Health Services and other health professionals to coordinate the delivery of primary health care for their patients.

(<https://pcnpmo.ca/Pages/default.aspx>)

## Private Household

A private household is a person or a group of people occupying the same dwelling and who do not have a usual place of residence elsewhere in Canada or abroad. The household universe is divided into two sub-universes on the basis of whether the household is occupying a collective dwelling or a private dwelling. The latter is a private household. (Statistics Canada)

## Qualifier (comparisons between indicator values)

In comparing indicators across local geographic areas (LGAs) and the Province, this report uses qualifiers such as 'higher than', 'lower than', 'similar to', etc. These statements are based on a simple statistical comparison that determines how far apart the indicator values are on the full scale of values for the indicator. For each indicator, the standard deviation (SD) was used as the measuring stick for whether the values are "close" or "far apart". For each indicator, the distance

between the LGA value and the provincial (AB) value was measured as number of SDs, and the direction of the difference (plus or minus). For example, if the LGA value is two SDs above the AB value, then the LGA value is said to be 'much higher' than the provincial value. The complete set of comparison criteria is given below.

Qualifier	Distance between values
Much Lower	below -1.5 SD
Lower	-1.5 SD to -0.25 SD
Similar/Comparable	-0.25 SD to +0.25 SD
Higher	+0.25 SD to +1.5 SD
Much Higher	+1.5 SD and higher

### Separation Rate

A separation from a health care facility occurs anytime a patient (or resident) leaves because of death, discharge, sign-out against medical advice or transfer. The separation rate is the total number of inpatient separations divided by the total population.

### Self-Perceived Stress Tolerance

Perceived stress tolerance is the ability to handle the day-to-day demands in individual's life, for example, handling work, family and volunteer responsibilities. This data is collected through surveys where respondents are asked to rate their ability as poor, fair, good, very good or excellent. (Alberta Community Health Survey)

### Sexually Transmitted Infection (STI)

A sexually transmitted infection is an infection that can be transferred from one person to another through sexual contact. (Public Health Agency of Canada)

### Smoker

As defined by Statistics Canada, 'smokers' are members of the population aged 12 and older who report being a current smoker. A "daily smoker" is someone who reports smoking cigarettes every day (although it does not take into account the number of cigarettes smoked). 'Occasional smokers' refers to those who reported smoking cigarettes occasionally; this includes former daily smokers who now smoke occasionally. (Statistics Canada, Alberta Community Health Survey)

### Social Determinants of Health

The social determinants of health influence the health of populations. They can include: income and social status, social support networks, education, employment/working conditions, social environments, physical environments, personal health practices and coping skills, healthy child development, gender and culture. (Statistics Canada)

### Teen Birth Rate

The teenage live birth rate is the number of live births per 1,000 women aged 15 to 19. (E-STAT, Statistics Canada)

## Community Services (Online Resources)

## Appendix B

### 1. Indigenous Relations

- Indigenous Services  
<https://www.alberta.ca/Indigenous-organizations-and-service-directory.aspx>  
This link provides a directory of services and information for First Nations, Metis and Inuit peoples in Alberta.
- Health Services and Social Programs for Indigenous Peoples  
<https://www.canada.ca/en/services/indigenous-peoples/health-services-and-social-programs-indigenous-peoples.html>  
This link provides information on physical and mental health services, child and family services, non-insured benefits, and health and wellbeing.
- First Nation Community Profiles:  
<https://fnp-ppn.aadnc-aandc.gc.ca/fnp/Main/index.aspx?lang=eng>  
This link provides a collection of information that describes individual First Nation communities across Canada. It also allows you to quickly locate First Nation communities by consulting the interactive map: <https://geo.aadnc-aandc.gc.ca/cipn-fnpim/index-eng.html>
- Delegated First Nation Agencies:  
<https://www.alberta.ca/delegated-first-nation-agencies.aspx>  
This link provides contact information and a map of delegated First Nation agencies and societies in Alberta.
- Alberta Metis Organizations  
<https://www.alberta.ca/metis-relations.aspx#jumplinks-1>  
This link provides information on Metis communities and organizations in Alberta.

### 2. Education

- Alberta Education and Training:  
<http://www.learnalberta.ca/content/mychildlearning/index.html>  
This link provides resources on the variety of educational choices, curriculum and related information available for children from Kindergarten to Grade 12.
- Future Ready  
<https://www.alberta.ca/release.cfm?xID=43642DBA5E0B2-F157-A213-757AD483EB7276F0>

This link provides resources on Alberta's integrated approach to education, skills and training.

- Local Resources: Find a directory of your local schools and school boards:  
<https://education.alberta.ca/alberta-education/school-authority-index/?searchMode=3>

This link provides a list of school authorities and associated public, private, francophone and early childhood services – school authorities are listed in alphabetical order.

### 3. Employment

- Career Planning and Support Programs  
<https://alis.alberta.ca/plan-your-career/>  
This link provides information on guidance and resources for career planning and advancement.
- Career Planning, Education, Jobs:  
<http://alis.alberta.ca/index.html>  
This link provides resources for finding a job, including career planning, training and development, job search and career information. It also provides links to educational resources.
- Local resources:  
Find your local employment resources:  
<https://alis.alberta.ca/tools-and-resources/>  
This link provides employment, training and career services by region. Each region links to a comprehensive list of office locations, job fairs and service directories.

### 4. Family and Children

- Financial, family and social supports  
<https://www.alberta.ca/family-social-caregiver-supports.aspx>  
This link provides information on financial assistance and support programs for individuals and families.
- Children and Family Services:  
<https://www.alberta.ca/childrens-services.aspx>  
This link provides links to programs and services that support families and communities; it provides information on child care, parenting, women's issues, youth programs, safer communities, and family community support services.
- Programs and Services for Parents:  
<http://www.humanservices.alberta.ca/family-community/child-care-resources-for-parents.html>

This link provides resources for parents on childcare programs.

- Programs and Services for Youth:

<http://www.humanservices.alberta.ca/abuse-bullying.html>

This link provides resources on family and community safety including information on bullying, internet safety, and healthy relationships.

## 5. Housing

- Housing and Property:

<https://www.alberta.ca/housing-property.aspx>

This link provides information on housing and property in Alberta, including information for tenants and landlords.

- Housing and Rent Assistance:

<https://www.alberta.ca/affordable-housing-programs.aspx>

<https://www.alberta.ca/income-housing-job-loss-supports.aspx>

This link provides information on assistance for low-income Albertans to find safe and affordable places to live.

- Local Resources:

Find your local housing programs and services:

<https://www.alberta.ca/affordable-housing-programs.aspx>

Information for tenants and landlords – Find information about living in or operating a residential rental property

<https://www.alberta.ca/information-tenants-landlords.aspx>

Find Landlords and tenants and rent and rental properties

<http://www.servicealberta.gov.ab.ca/Landlords-and-tenants-tipsheets.cfm>

This link provides information on condominiums, landlords and tenants, and rent and rental properties.

Find your local homeless support resources:

<https://www.alberta.ca/homelessness.aspx>

This link provides information on initiatives in Alberta that focus on the prevention and reduction of adult and youth homelessness in the province. It also provides information on shelters and personal identification cards for those experiencing homelessness.

<http://www.humanservices.alberta.ca/homelessness.html>

<https://www.7cities.ca/>



This link provides information on funding provided to the Outreach Support Services Initiative and the Addiction and Mental Health Strategy in the communities of Calgary, Edmonton, Grande Prairie, Fort McMurray, Red Deer, Lethbridge and Medicine Hat.

## 6. Seniors

- Alberta Seniors: <http://www.seniors.alberta.ca/>  
This link provides information and links to the different programs and services supporting seniors in Alberta.
- Seniors Financial Assistance Programs  
<https://www.alberta.ca/seniors-financial-assistance.aspx>  
This link provides information on a variety of seniors programs including financial assistance, dental and optical assistance, home adaptation and repair, property tax deferral and special needs assistance.

## 7. Social Services

- Alberta Supports  
<https://www.alberta.ca/alberta-supports.aspx>  
This site connects users to more than 30 programs and 120 community and social services provided by the Government of Alberta. Office locations can be found on an interactive map. Online application and contact instructions are available in the website.
- Alberta Community and Social Services:  
<https://www.alberta.ca/community-and-social-services.aspx>  
This link provides a portal to the variety of programs and services provided by Alberta Human Services. Human Services has developed a resource list:  
<http://www.humanservices.alberta.ca/disability-services/14855.html>
- Alberta Food Bank Network Association:  
<http://foodbanksalberta.ca/food-banks/>  
This link provides contact information for Food Banks across Alberta.
- Programs and Services for Low-Income Earners:  
<https://www.alberta.ca/income-support.aspx>  
This link contains information about Alberta Works and other social assistance programs for low-income earners.
- Local Services:  
To find other local community and social services in your area:

Find local services through this province-wide service directory of community, health, social and government services:

[http://www.informalberta.ca/public/common/index\\_ClearSearch.do](http://www.informalberta.ca/public/common/index_ClearSearch.do)

24 hour information and referral service:

<https://ab.211.ca/>

Telephone: 211

Toll-free: Edmonton – Alberta North: 1888-482-4696 and Calgary – Central Alberta and Alberta South: 1-855-266-1605

## Health Link Alberta Calls for South Zone

## Appendix C

The following listing shows the town/city, number of calls and percentage where the zone was coded as South (including calls from the Mental Health Helpline). Records where the town/city is unknown or where the caller chose not to give demographic information are excluded. The listing is sorted alphabetically by Town/City in ascending order.

### Calls by Town/City for the Fiscal Year 2020/2021

Town/City	# of Calls	%
Acadia Valley	14	0.0%
Aden	2	0.0%
Aetna	12	0.0%
Barnwell	97	0.3%
Barons	69	0.2%
Bassano	194	0.5%
Bellevue	99	0.3%
Big Stone	1	0.0%
Blairmore	217	0.6%
Bow Island	212	0.6%
Brocket	270	0.7%
Brooks	1,883	4.9%
Buffalo	2	0.0%
Burdett	26	0.1%
Cardston	636	1.7%
Cereal	10	0.0%
Cessford	6	0.0%
Chinook	1	0.0%
Coaldale	1,278	3.3%
Coalhurst	576	1.5%
Coleman	192	0.5%
Coutts	32	0.1%
Cowley	41	0.1%
Cranford	23	0.1%
Cypress County	283	0.7%
Del Bonita	9	0.0%
Desert Blume	58	0.2%
Diamond City	43	0.1%
Duchess	172	0.4%
Dunmore	79	0.2%
Elkwater	9	0.0%
Empress	10	0.0%
Enchant	53	0.1%
Esther	1	0.0%
Etzikom	22	0.1%
Finnegan	1	0.0%

Town/City	# of Calls	%
Foremost	115	0.3%
Fort Macleod	507	1.3%
Gem	14	0.0%
Glenwood	71	0.2%
Granum	60	0.2%
Grassy Lake	52	0.1%
Hays	30	0.1%
Hilda	8	0.0%
Hill Spring	49	0.1%
Hillcrest Mines	53	0.1%
Iddesleigh	2	0.0%
Iron Springs	49	0.1%
Jenner	9	0.0%
Lake Newell Resort	25	0.1%
Lethbridge	16,586	43.4%
Lethbridge County	216	0.6%
Lundbreck	264	0.7%
Magrath	254	0.7%
Maleb	1	0.0%
Manyberries	4	0.0%
Medicine Hat	8,375	21.9%
Milk River	89	0.2%
Millicent	2	0.0%
Monarch	68	0.2%
Mountain View	31	0.1%
New Brigden	4	0.0%
New Dayton	15	0.0%
Nobleford	204	0.5%
Orion	2	0.0%
Oyen	94	0.2%
Patricia	18	0.0%
Picture Butte	326	0.9%
Pincher Creek	589	1.5%
Pollockville	1	0.0%
Purple Springs	22	0.1%
Rainier	21	0.1%

Health Link Alberta Calls for South Zone (Continued)

Town/City	# of Calls	%
Ralston	36	0.1%
Raymond	418	1.1%
Redcliff	619	1.6%
Rolling Hills	44	0.1%
Rosemary	53	0.1%
Scandia	10	0.0%
Sedalia	4	0.0%
Shaughnessy	67	0.2%
Sibbald	4	0.0%
Skiff	7	0.0%
Spring Coulee	15	0.0%
Stand Off	399	1.0%
Stirling	111	0.3%

Town/City	# of Calls	%
Taber	1,131	3.0%
Tilley	55	0.1%
Turin	36	0.1%
Twin Butte	7	0.0%
Vauxhall	163	0.4%
Veinerville	5	0.0%
Walsh	11	0.0%
Wardlow	8	0.0%
Warner	69	0.2%
Waterton Park	25	0.1%
Welling	27	0.1%
Wrentham	9	0.0%
Youngstown	35	0.1%
<b>Total</b>	<b>38,231</b>	<b>100.0%</b>

**Source:**

*Health Link Alberta, Alberta Health Services*

## Select Health Services in Local Geographic Area

## Appendix D

### Cypress County excluding Medicine Hat

#### Active Treatment Hospitals

---

There are no Active Treatment Hospitals in this Local Geographic Area

---

**Source:**

*Delivery Site Registry, Alberta Health, February 2022*

**Note:**

*Active Treatment Hospitals refers to: Tertiary, Referral Care Hospitals; Specialty Care Pediatric Hospitals; Specialty Care Rehabilitation Hospitals; Specialty Care Cancer Hospitals; Regional Referral, Secondary Level Care Hospitals; Community Hospital, Full Service Hospitals; Community Hospital, Moderate to Basic Services Hospitals; and, Designated Ambulatory Care Hospitals.*

#### Community Ambulatory Care Centres

---

There are no Community Ambulatory Care Centres in this Local Geographic Area

---

**Source:**

*Delivery Site Registry, Alberta Health, February 2022*

**Note:**

*Community Ambulatory Care Centres refers to: Urgent Care Centres; and, Basic Community Ambulatory Care Clinics.*

#### Mental Health Facilities

---

There are no Mental Health Facilities in this Local Geographic Area

---

**Source:**

*Delivery Site Registry, Alberta Health, February 2022*

**Note:**

*Mental Health Facilities refers to: Addiction Community Centres; Addiction Residential and/or Detox Centres; Community Mental Health Clinics; and, Mental Health (Psychiatric) Facilities.*

#### Diagnostic Imaging Centres

---

There are no Diagnostic Imaging Centres in this Local Geographic Area

---

**Source:**

*Delivery Site Registry, Alberta Health, February 2022*

#### Community Pharmacies

Name	Address
Pharmasave #304	114 Broadway Ave E, Redcliff, T0J2P0

**Source:**

*Delivery Site Registry, Alberta Health, February 2022*

## Medical Laboratories

---

There are no Medical Laboratories in this Local Geographic Area

---

**Source:**

*Delivery Site Registry, Alberta Health, February 2022*

## Long Term Care Accommodation

---

There are no Long Term Care Accommodation in this Local Geographic Area

---

**Source:**

*Delivery Site Registry, Alberta Health, February 2022*

## Supportive Living Accommodation

---

There are no Supportive Living Accommodation in this Local Geographic Area

---

**Source:**

*Delivery Site Registry, Alberta Health, February 2022*

**Note:**

*Supportive Living Accommodation refers to: Assisted Living Accommodation; Group Homes; and, Lodges.*

## Health Care Practitioner Offices

Name	Address
Redcliff Family Practice	202 Broadway Ave E, Redcliff, T0J2P0

**Sources:**

*Delivery Site Registry, Alberta Health, February 2022*  
*Physician Claims, Alberta Health, 2020/2021 and 2021/2022 (Q1-Q3)*

**Note:**

*Health Care Practitioners include but are not limited to physicians, dentists, physiotherapists, chiropractors etc. Only practitioner offices with at least one billing claim reported during 2020/2021 and 2021/2022 (Q1-Q3) are included.*

**Disclaimer:**

*The information in Appendix D is based on available Delivery Site Registry data (as of February 7, 2022). Some facilities in the DSR are based on data provided by the College of Physicians and Surgeons of Alberta. For the most current information, go to <https://iam1.health.alberta.ca/DSRWeb/initAnon.do>*