

Public Land Use Zones

Kananaskis Country

Map Legend

Designated Trails 2018

Trail Use Designation

NOTE: All trails have two-way traffic

- LOC & Public Access - Licensed and registered on-highway vehicles
- 4x4s - Trucks, jeeps, quads, motorcycles, snow vehicles
- OHV - Quads, motorcycles, snow vehicles
- Motorcycles - Motorcycle use only
- Snow Vehicles - Designated trails for winter snow vehicle use only, except in McLean Creek PLUZ

Designated Trails

Non-Motorized Uses - All trails / access open

Motorized Uses - Permitted ONLY on trails designated and posted

- Year Round Gate Closure
- Seasonal Gate Closure
- Gravel Pit
- Wellsite
- Fire Lookout

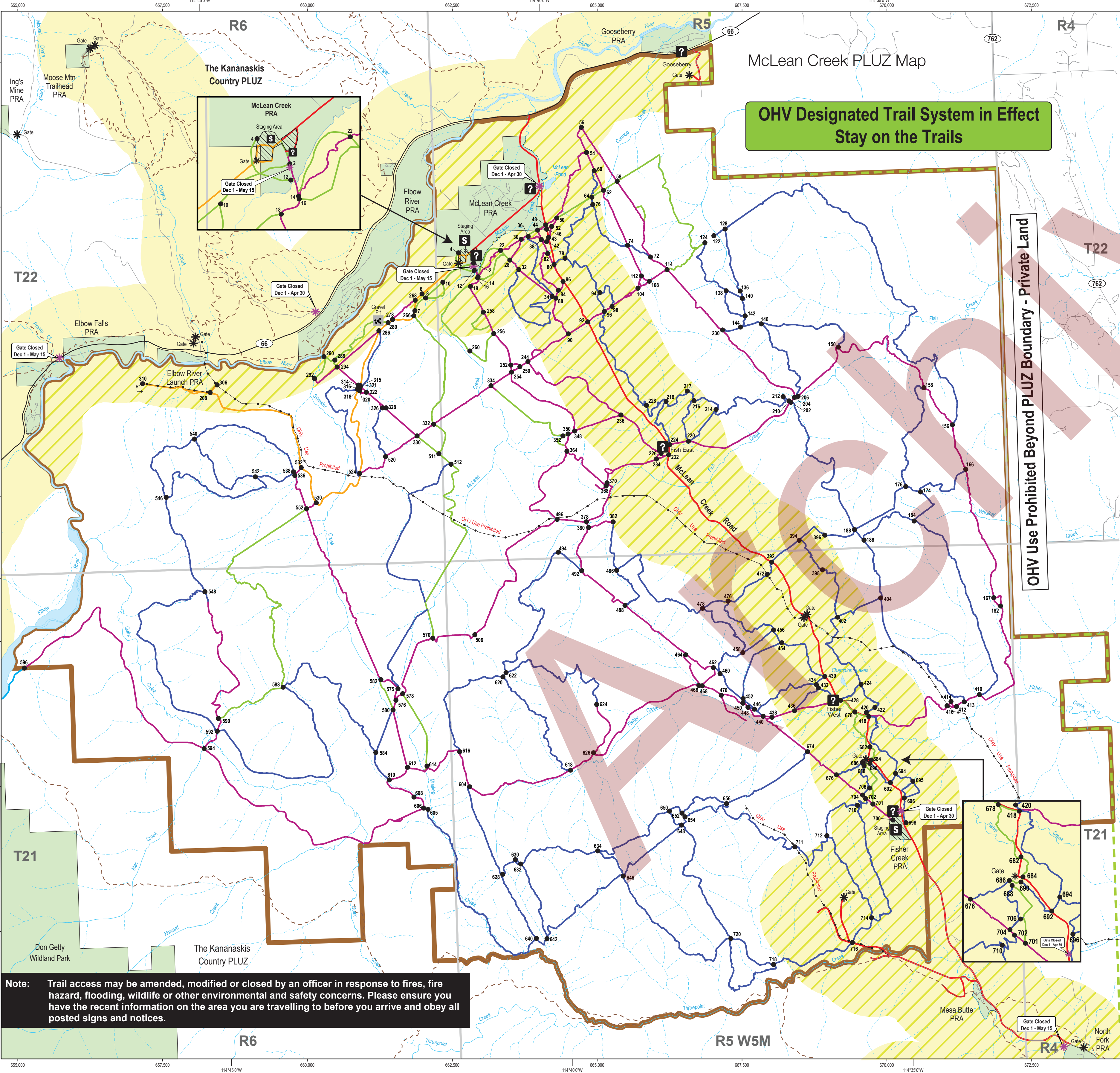
Signage

- Information Kiosk
- Staging Area
- Trail Intersection Marker

Public Land Use Zone (PLUZ)

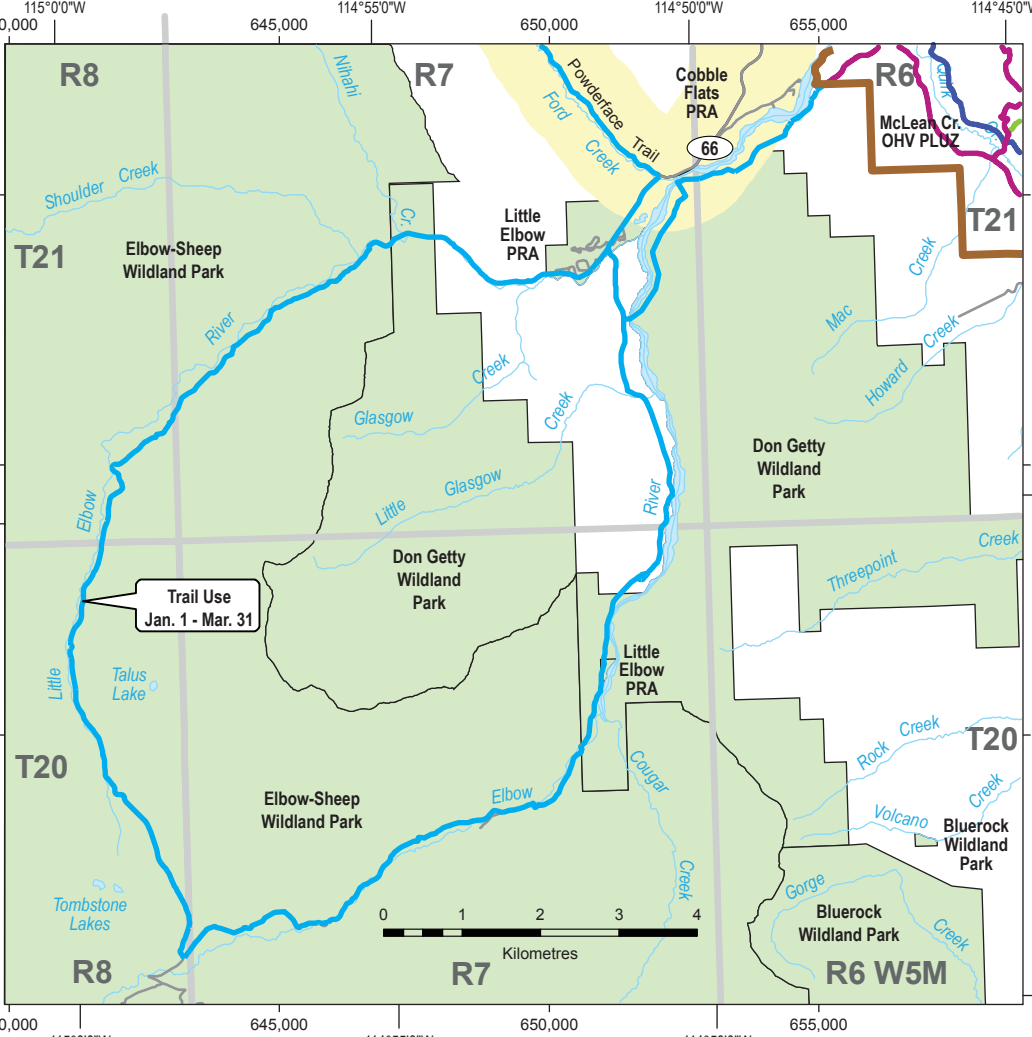
- 1km No Camping/No Open Fire Zone
- Firearm Use Restriction Zone
- Parks and Protected Areas
- Public Land Recreation Area
- First Nations
- Townships
- Lakes / Reservoirs
- Rivers / Streams
- Other Roads
- Kananaskis Country Designated Trails
- Forest Protection Area Boundary (Coincident with Green Zone Boundary around McLean Creek PLUZ)

Caution: Under the Backcountry Trail Flood Rehabilitation Program, trails in the area may be temporarily closed due to construction. Please be aware of construction projects on trails and avoid temporary closure areas – for more information visit: backcountryflood.alberta.ca.

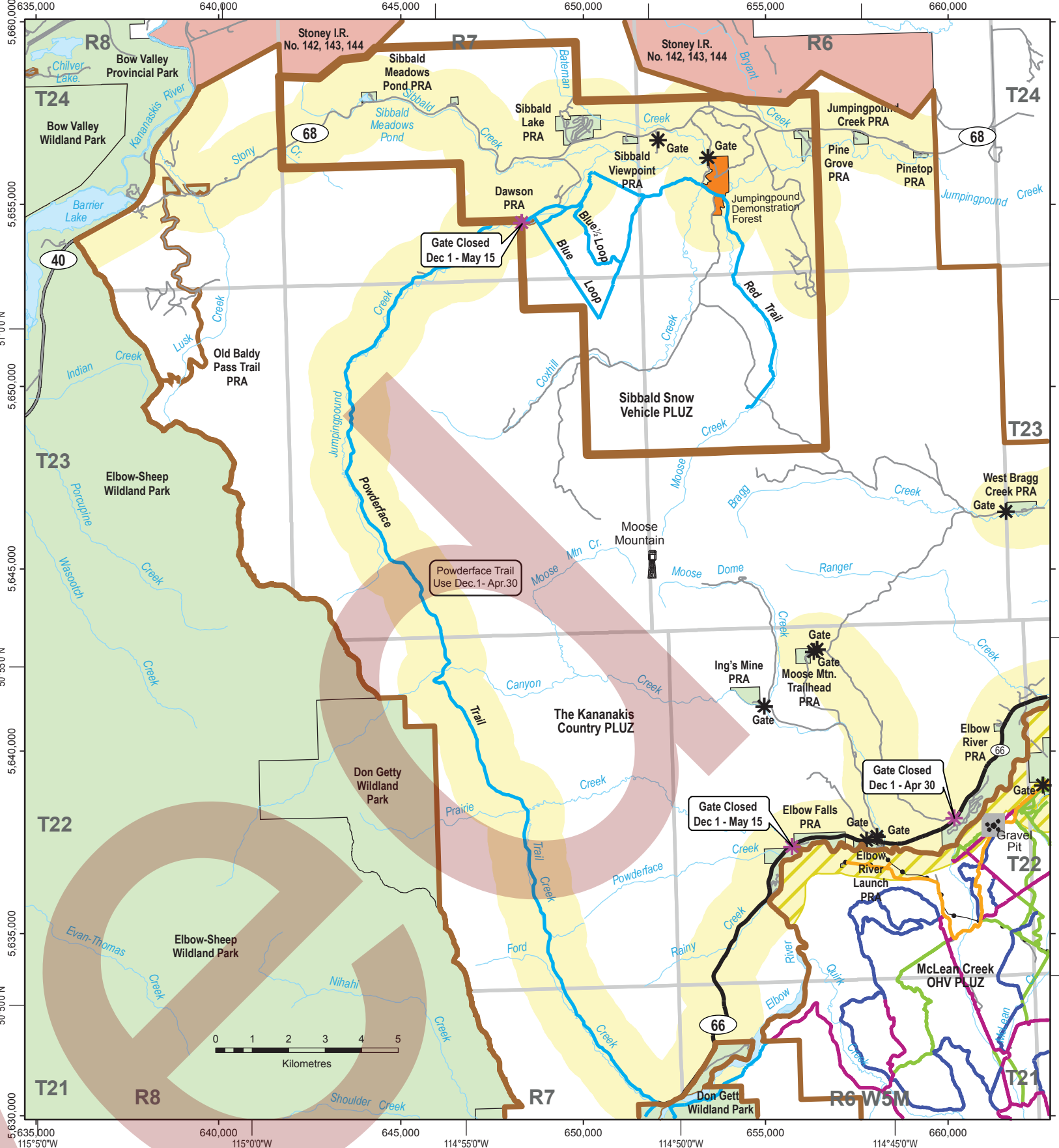


Elbow Loop Public Recreation Trail

1. Travel is restricted to snow vehicles. All other OHVs are prohibited.
2. Travel is permitted on designated trails only.
3. Elbow Loop Public Recreation Trail is open Jan. 1 to Mar. 31.
4. Periodic trail closures may be in effect due to poor snow or avalanche conditions.
5. For your own safety, no stopping in posted avalanche areas.



Sibbald Snow Vehicle PLUZ



What are Public Land Use Zones?

Public Land Use Zones have been established within Kananaskis Country to identify what trails/area and during what time periods off-highway vehicles and snow vehicles are permitted (see Kananaskis Country Public Land Use Zones/Permitted Motorized Activities chart). Other non-motorized uses are permitted within all the PLUZs and are described in other maps/brochures published by Tourism, Parks and Recreation for Kananaskis Country PLUZs.

Designated Trail Network: Keep on the trail and be aware of signs and trail conditions
McLean Creek PLUZ: Trail intersection and trail designations have been posted.
Sibbald PLUZ: Trail signs limited. Note: area is prone to blow down trees and scant snowfall.
Cataract PLUZ: Trail signs installed/maintained by volunteers.

To aid navigation:
Each numbered dot on this map corresponds to a numbered post on the ground.

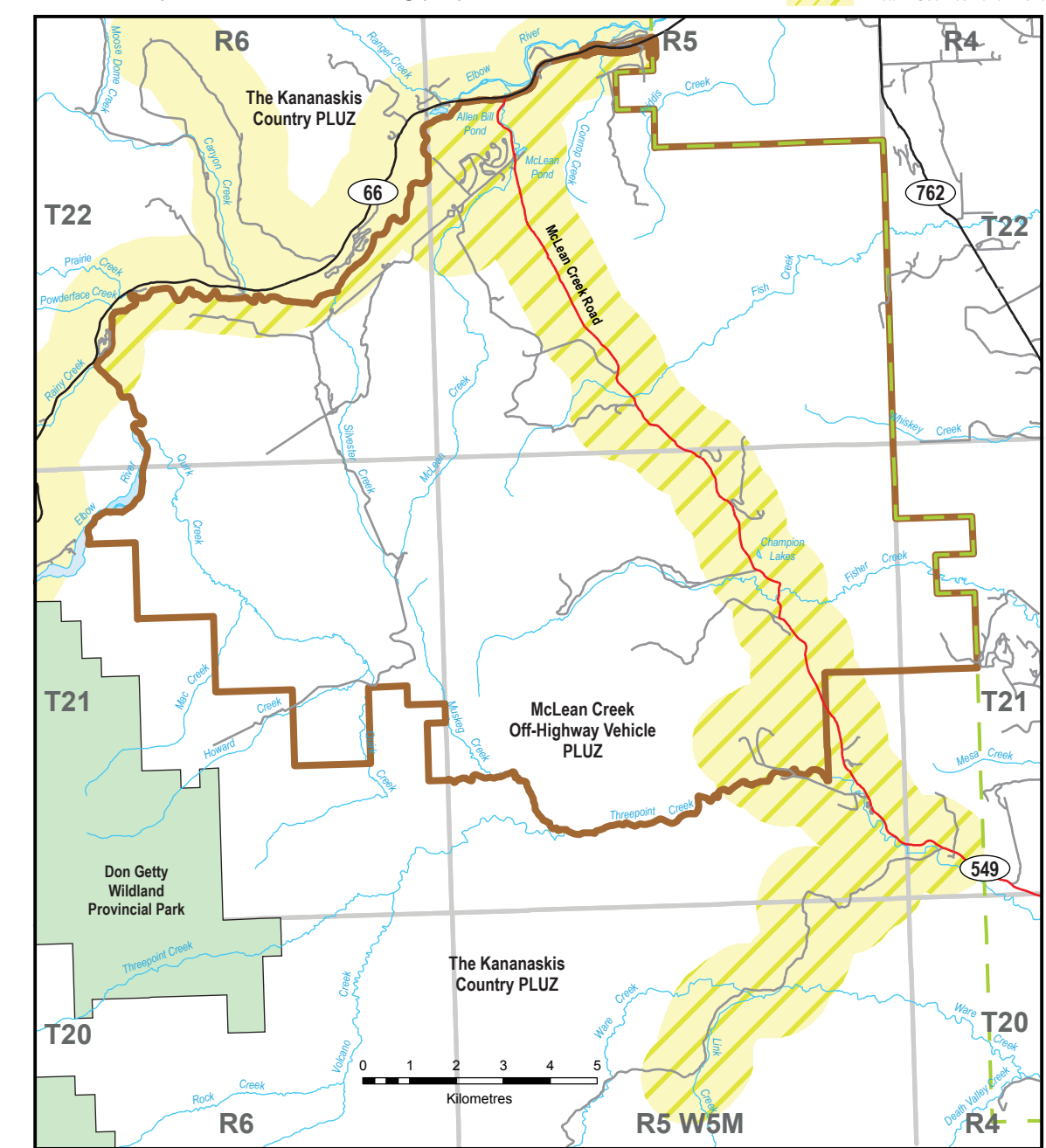
Trail Designation System

Type of Trail	Permitted Vehicles	Conditions
4x4 Trails		All motorized vehicles* are allowed on this trail classification. Use caution and respect other users of the trail system. Trails open for off-highway vehicles with an overall width up to and including those over 1.6 m (65").
OHV Trails		Trails open for off-highway vehicles with an overall width under 1.2 m (50").
Single Track Trails		Trails open to off-highway vehicles with an overall width under 0.9 m (36").
Snow Vehicles		Snow vehicles – a motor vehicle designed and equipped to be driven exclusively on snow or ice – as defined by the Public Land Administration Regulation (PLAR). www.qp.alberta.ca

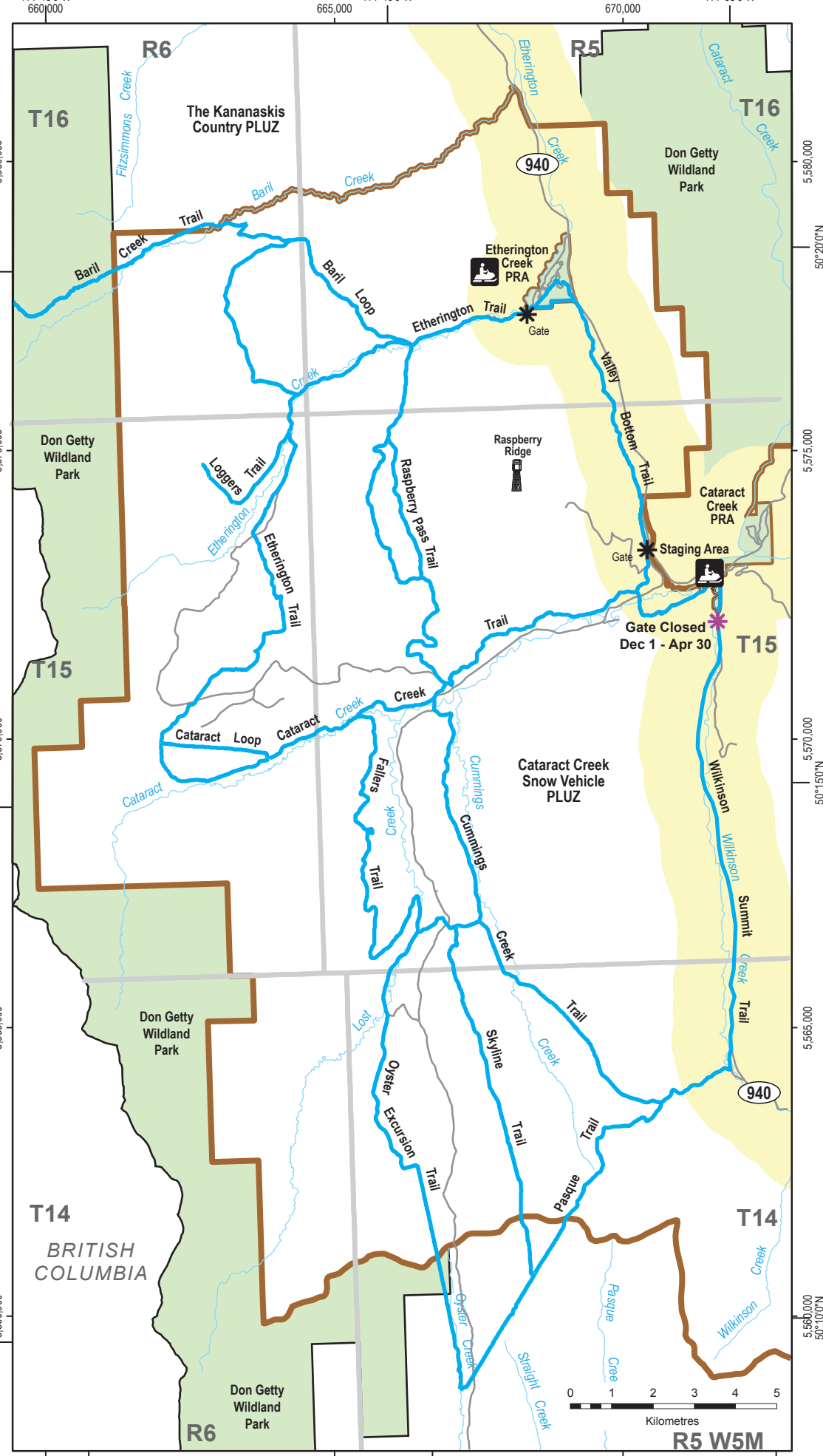
* Includes snow vehicles

NEW Firearms Use Restriction Zone

Firearm use restriction in effect for McLean and The Kananaskis Country PLUZs except for authorized hunting purposes.



Cataract Creek PLUZ



Sibbald and Cataract Creek Public Land Use Zones

1. Travel is restricted to snow vehicles. All other OHVs are prohibited.
2. Travel is permitted on designated snow vehicle trails only.

The Kananaskis Country Public Land Use Zones/Permitted Motorized Activities

Type of Vehicle	McLean Creek Off-Highway Vehicle	Sibbald Snow Vehicle	Cataract Creek Snow Vehicle	Kananaskis Country	Kananaskis Country Elbow Loop	Kananaskis Country Powderface Trail
OHV - Off-highway vehicles (not including snow vehicles)*	Permitted All OHV May 1-Nov 30 Dec 1 - Apr 30 restricted to vehicles not exceeding 450 kg (1000 lbs) with 3 or more flotation tires	Not Permitted	Not Permitted	Not Permitted	Not Permitted	Not Permitted
Snow Vehicle	Permitted Jan 1 - Mar 31	Permitted Jan 1 - Mar 31 NB: Trail system is subject to scant snowfall and effects of wind/ blow down	Permitted Dec 1 - Apr 30	Not Permitted with two Exceptions:	Permitted Jan 1-Mar 31	Permitted Dec 1-Apr 30

* as defined by Public Lands Administration Regulation

Roads in the Public Land Use Zones

Department of Transportation Roads	No trail symbols will be used to identify roads in the PLUZ.	Only vehicles that are registered as on-highway vehicles and have valid insurance may operate on these roads.
Industrial/Commercial roads	No trail symbols will be used to identify roads in the PLUZ. LOC/DLO roads are fall under the jurisdiction of the <i>Traffic Safety Act</i> and vehicles that operate on the LOC/DLO must be licensed and registered as "on-highway vehicles."	All vehicles that are licensed, insured and registered as on-highway vehicles are permitted on these roads. Certain LOCs have conditions restricting public access for safety or wildlife reasons.
Temporary resource roads (usually in place less than two years)	No trails symbols will be used to identify roads in the PLUZ. Even though these roads are built to lower standard than primary or secondary highways they still require on-road licence and registration for vehicles to operate.	Public access may be permitted. Up-to-date information on these roads will be provided on the PLUZ web page as well as at kiosks throughout the area.
Closed Roads	No trails symbols will be used to identify roads in the PLUZ. These are roads that are not open to the public for use.	Roads are closed for public use because of public safety or fish and wildlife concerns.
Shared Roads	 These roads will be designated by the Shared Use Road sign. Obey the posted speed limits and respect all users.	Some of the industrial/commercial/ temporary roads in the McLean PLUZ were built on existing motorized recreational access trails. The Elbow Valley trail currently is the only Shared Use road in the McLean PLUZ. As a condition of the approval to use the recreational access trail for industrial use, OHV and snow vehicle traffic is allowed. The trail has been upgraded to allow for the industrial traffic and a disposition under the <i>Public Lands Act</i> has been issued, but the road is to be treated as a recreation trail.

Liability Disclaimer - This brochure is provided for information purposes and to advise you of the rules relating to trail use. Use of the trail system is entirely at your own risk. The trails have not been classified by degree of difficulty and little or no maintenance is done on these trails; natural and human-made hazards may exist. The trail system can be difficult and physically challenging and conditions may change due to weather and other factors. For example, trails that may be easy to traverse under dry or frozen conditions may be hazardous and/or impassable under spring thaw or wet conditions. It is up to users of the trail system to learn the skills necessary for their safety and to exercise caution in potentially hazardous areas.

Public Land Use Zones of Kananaskis Country

McLean Creek • Sibbald • Cataract Creek • Kananaskis Country

- **Stay on the designated trail**
- **Take your garbage home**
- **Respect other users of the area**

Kananaskis Country is a 4200 km² area designated as parks or public land and managed for multi-use. There are four Public Land Use Zones in Kananaskis Country: McLean Creek Off-Highway Vehicle PLUZ, Sibbald Snow Vehicle and Cataract Snow Vehicle PLUZs, and the Kananaskis Country PLUZ.

Public Land Use Zones are managed to protect the environment while allowing responsible and sustainable use of the land. In addition to recreation, this multiple use area includes forestry, agriculture, and oil and gas activities. Regulations within a PLUZ determine where recreational activities can occur and under what conditions. It is your responsibility to become familiar with activities allowed in this area before you visit. Refer to the map and charts in this pamphlet for further details.

Of Special Interest

Flood Rehabilitation

Alberta Environment and Parks is leading the restoration of backcountry trails on public lands impacted by the 2013 flood. For your safety and the safety of trail workers, please be aware of construction projects on trails and avoid temporary closure areas. For updated information on flood rehabilitation projects, closures and reroutes please visit the Backcountry Trails Flood Rehabilitation website at: backcountryflood.alberta.ca

Firearm Use Restriction

Firearm use restrictions are in effect for McLean and Kananaskis Country PLUZs except for authorized hunting purposes. See maps for location.

Westslope Cutthroat Trout

Alberta's westslope cutthroat is listed as threatened under the provincial *Wildlife Act* and the federal *Species at Risk Act*. Numbers are declining from degradation or destruction of habitats, caused in large part by human activities, hybridization with non-native trout species, or overharvest by angling. You have a vital role to play in the recovery of this species! Some rivers and stream in the Kananaskis Country PLUZ are critical habitat for the Westslope cutthroat trout. While visiting the Kananaskis Country PLUZ, please keep your "wheels out of the water" to reduce impacts to water quality and the spawning habitat vital to the recovery of this species.



Wheels out of Water

- Stay on the trail to avoid water bodies, wetlands and shorelines.
- Wheeled or tracked vehicles are not allowed on beds or shores of watercourses, wetlands or waterbodies.
- Use designated crossings. Crossing the stream anywhere other than a bridge or designated ford is considered off the designated trail.
- Do not wash your vehicle in a watercourse, wetland or waterbody.



Random camping refers to camping outside designated campgrounds. This type of camping is user maintained and unserviced. Plan accordingly.

- Do not camp where you will block or restrict trail access.
- Choose areas that minimize damage to vegetation.
- Use existing fire pits when possible.
- Do not remove artifacts.
- Camp at least 100m (330 ft) away from an oil and gas well site or facility.
- Do not camp on a pipeline.
- Remove all garbage for disposal at home or at an approved garbage disposal facility.



Serviced Camping Opportunities

Visitors to Kananaskis Country are strongly encouraged to use the amenities and facilities provided by Alberta Environment and Parks in Provincial Recreation Areas (PRA) and Provincial Parks.

These areas have been engineered to reduce the risk of environmental impact to fish and wildlife habitat, vegetation, soil and water that is caused by intensive use.

Do not remove firewood from Provincial Recreation Areas.

Public Land Use Zones	McLean Creek Off-Highway Vehicle		Sibbald Snow Vehicle	Cataract Creek Snow Vehicle		Kananaskis Country
Services	McLean Creek Campground	Fisher Creek Campground	Dawson Equestrian Staging Area & Campground	Cataract Creek Campground	Etherington Creek Campground	For a complete list of Provincial Recreation Areas and services in the Kananaskis Country PLUZ visit www.albertaparks.ca/kananaskis
Staging Area	OHV Snow vehicle	OHV Snow vehicle	Snow vehicle	Snow vehicle	Snow vehicle	
Provincial Recreation Area Camping	170 sites (winter: sites/services reduced) OHV-friendly sites available	30 sites Year-round	10 sites Year-round	102 sites May 15-Sept 1*	61 sites May 2-Oct 13* 10 equestrian camping sites May 2-Sept 1	
- Reservations	yes	x	x	x	x	
- Electrical Hookup	yes	x	x	x	x	
- Showers	yes	x	x	x	x	
- Water/Pump	yes	yes	x	yes	yes	
- Toilets	yes	yes	yes	yes	yes	
- Bear-proof garbage bins	yes	yes	yes	yes	yes	
- Shelter	x	x	x	yes	x	

* Opening and closing dates are subject to change without notice. See www.albertaparks.ca/kananaskis for updated operating dates.

OHV: Off-Highway Vehicle (not including snow vehicles) as defined by Public Land Administration Regulation

Volunteer Efforts In The Public Land Use Zones

Volunteers play an important role in maintaining and enhancing the designated trail system in Kananaskis Country. Their work helps improve water quality and protect fisheries resources and riparian zones.

Volunteers routinely perform maintenance on existing bridges and trails, as well as carry out bioengineering projects such as planting willows to stabilize stream banks. The efforts of these dedicated individuals provide recreational opportunities for users of the area, while protecting the area's natural resources for current and future generations.

Ride Responsibly

- Lead by example; use the trails in a safe and responsible manner.
- Slow down. Adjust your speed of travel according to trail conditions.
- Be courteous of other users and practice good rider etiquette.
- Ride when trails are dry. Avoid riding after heavy rainfall or snowmelt.
- Motorized users yield to non-motorized users.
- Pull over to the side, turn off your engine and remove your helmet when horses are approaching.
- If you encounter a locked gate, do not proceed beyond it.
- Close all gates behind you including those you found open.
- Travel is permitted beyond cattle guards and wire gates on the designated trail system.
- Reduce the spread of invasive species by washing your vehicle and equipment before entering the PLUZ.
- Ensure exhaust systems are clear of debris that may ignite and cause wildfire.

Know Before You Go

As a user of the PLUZ, it is your responsibility to ensure you are adequately informed of closures, appropriate usages and rules.

Visitors who do not follow the rules may be fined or charged under the provincial legislation.

To learn more about Public Land Use Zones including trail updates visit the AEP website at aep.alberta.ca.

Additional web resources:

Alberta Agriculture and Forestry – wildfire.alberta.ca
Alberta Parks – albertaparks.ca
Parks Canada – pc.gc.ca
Vacation Guide – travelalberta.com



Avalanche Information

PLUZs are not controlled for avalanches, be prepared to properly manage avalanche-related risk when travelling through this area. For more information on avalanche safety and to check avalanche hazards and terrain ratings visit www.avalanche.ca.

Avoiding Wildlife Conflicts

PLUZs are home for many animals, including grizzly and black bears, cougars, coyotes and wolves. Please take precautions to reduce the likelihood of a dangerous wildlife encounter.

- Set up camp sites in open areas away from game trails, berry bushes, clover patches, streams and lakeshores.
- Constantly make noise to warn wildlife of your approach.
- Keep your dog on a leash at all times. Unleashed dogs may provoke an unwanted encounter.
- Carry bear spray and know how to use it.
- Use odor-proof containers to store anything that may attract a bear, including toiletries and pet food and never take these items into your sleeping area.
- Store food and other scented items in your vehicle or high in a tree, at least 100 m (330 ft.) from your camp.
- Cook food and dispose of dishwater at least 100 m (330 ft.) from your sleeping area.
- Never partially burn or bury food scraps.
- Pack out all garbage in sealed bags.
- Never feed, approach or disturb bears or wildlife.
- Stay in groups. Keep children close.
- Look for signs of recent wildlife activity including scat, prints, tree markings and wildlife carcasses. If there are signs of recent wildlife activity, leave the area immediately.

Always be aware of your surroundings and keep a respectful distance from wildlife. For more information on wildlife safety visit <http://aep.alberta.ca>



Equestrian Use On Public Land

- Do not tie horses to trees.
- All sites must be cleaned of manure and excess feed before leaving.
- All remaining feed must be disposed of at home. Do not leave any feed behind.
- Use weed-free feed and hay.
- Avoid grazing wherever possible.
- When accessing water, use hard ground surfaces and avoid soft ground conditions to prevent bank erosion.

Public Land Use Zones

Kananaskis
Country

For More Information

Contact the nearest AEP office or visit aep.alberta.ca

Calgary
403-297-8800 (dial 310-0000 toll-free)

Fire Ban Information 1-866-FYI-FIRE (394-3473)

Report A Poacher - 1-800-643-3800 to report suspicious hunting and fishing activity, dangerous wildlife encounters and serious public lands abuse

Emergency

In case of emergency, please dial **911**

To report a wildfire call **310-FIRE (310-3473)**

Environment 24-hour pollution response team **1-800-222-6514**



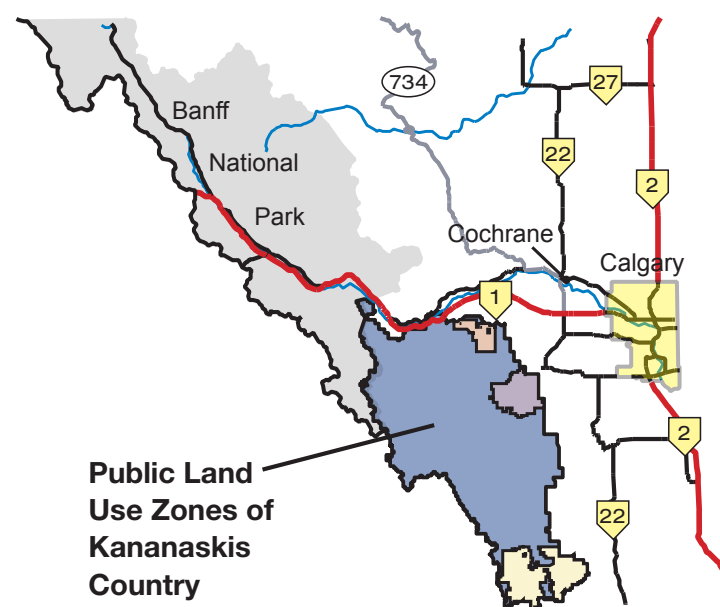
Scanning this QR code will take you directly to the McLean Creek PLUZ website for new digital mapping options and downloads.



ISBN: 978-1-4601-3905-9 (Print)
978-1-4601-3906-6 (PDF)
Revised March 2018



Getting There



This brochure is classified as a notice under the Public Lands Administration Regulation.

The official statutes and regulations should be consulted for all purposes of interpreting and applying the law. Clarification of the regulations may be obtained from your nearest AEP office.

Provincial statutes and regulations, in print or electronic format, are available through Alberta Queen's Printer: 780-427-4952 or visit www.qp.alberta.ca

