

General Grazing Reserve Information	
<b>Area:</b>	18,735 acres (7,581.8 hectares)
<b>Year Established:</b>	1960
<b>Terrain:</b>	Rolling landscape is dotted with small sloughs and patches of muskeg
<b>Vegetation:</b>	Aspen, willow, tame pasture
<b>EcoRegion:</b>	Dry mixedwood natural subregion
<b>Nearby Municipalities:</b>	40 km northeast of Rycroft
<b>Water Bodies:</b>	Nil

Livestock Management Information	
<b>Responsible Association:</b>	Wanham Grazing Association Maintains all fence lines, dugouts, corral systems and the buildings at the headquarters.
<b>Grazing Season:</b>	Mid-May to Mid-October
<b>Cattle:</b>	Approximately 15,200 Animal Unit Months (AUMs)
<b>Minimum number of Patrons:</b>	50 patrons
<b>Application:</b>	Please contact 780 835-7307 for grazing allotment applications. Application deadline is January 31 <sup>st</sup> .

Veterans of the Second World War originally homesteaded most of the area northeast of Rycroft from 1948 to 1951. However, a combination of low rainfall and poor access caused most of them to abandon their homesteads. By 1960, the Alberta Government bought out the few remaining farmers and established the Wanham Provincial Grazing Reserve. It was possible to take cattle to the reserve immediately because large areas of homesteads were already cultivated and seeded to forage.

Provincial Grazing Reserves are popular recreational sites for the general public. Recreational access condition information for Provincial Grazing Reserves can be found at:

- [Recreation on Agricultural Public Land](#)

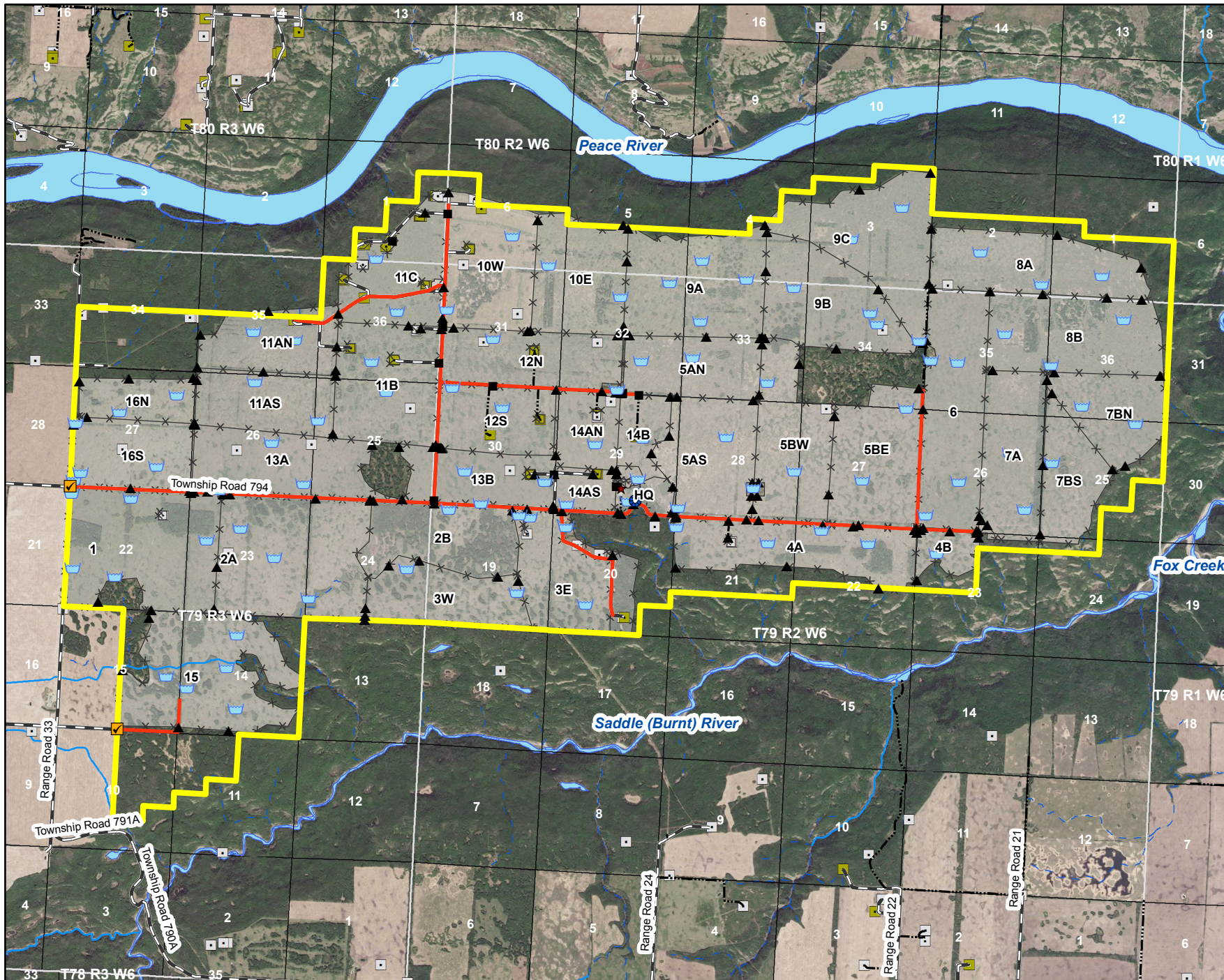
You must contact the grazing reserve agrologist prior to accessing the reserve at:

- Tel: 780 835-7200

# Wanham Provincial Grazing Reserve

## Recreational Access Map

Contact Information:  
Danielle Gabruck  
Phone: (780) 835 7200



- Public Access
- Headquarters
- Corral
- Cattleguard
- Dugout
- Gate
- Water Well
- Abandoned Well Site
- Well Site
- H2S Well Site
- Fence
- Designated Route
- Paved Road
- Gravel Road
- Unimproved Road
- Permanent Stream
- Recurring Stream
- Township
- Section
- Waterbody
- Field
- PGR Boundary

© 2017 Government of Alberta  
Map Created: July 2017  
Created by: Range Resource Stewardship Section,  
Land Policy Branch, Alberta Environment and Parks

Information as depicted is subject to change, therefore,  
the Government of Alberta assumes no  
responsibility for discrepancies at the time of use.

Base Map Data provided by the Government of Alberta  
under the Alberta Open Government Licence.  
© 2016 SPOT Imagery

