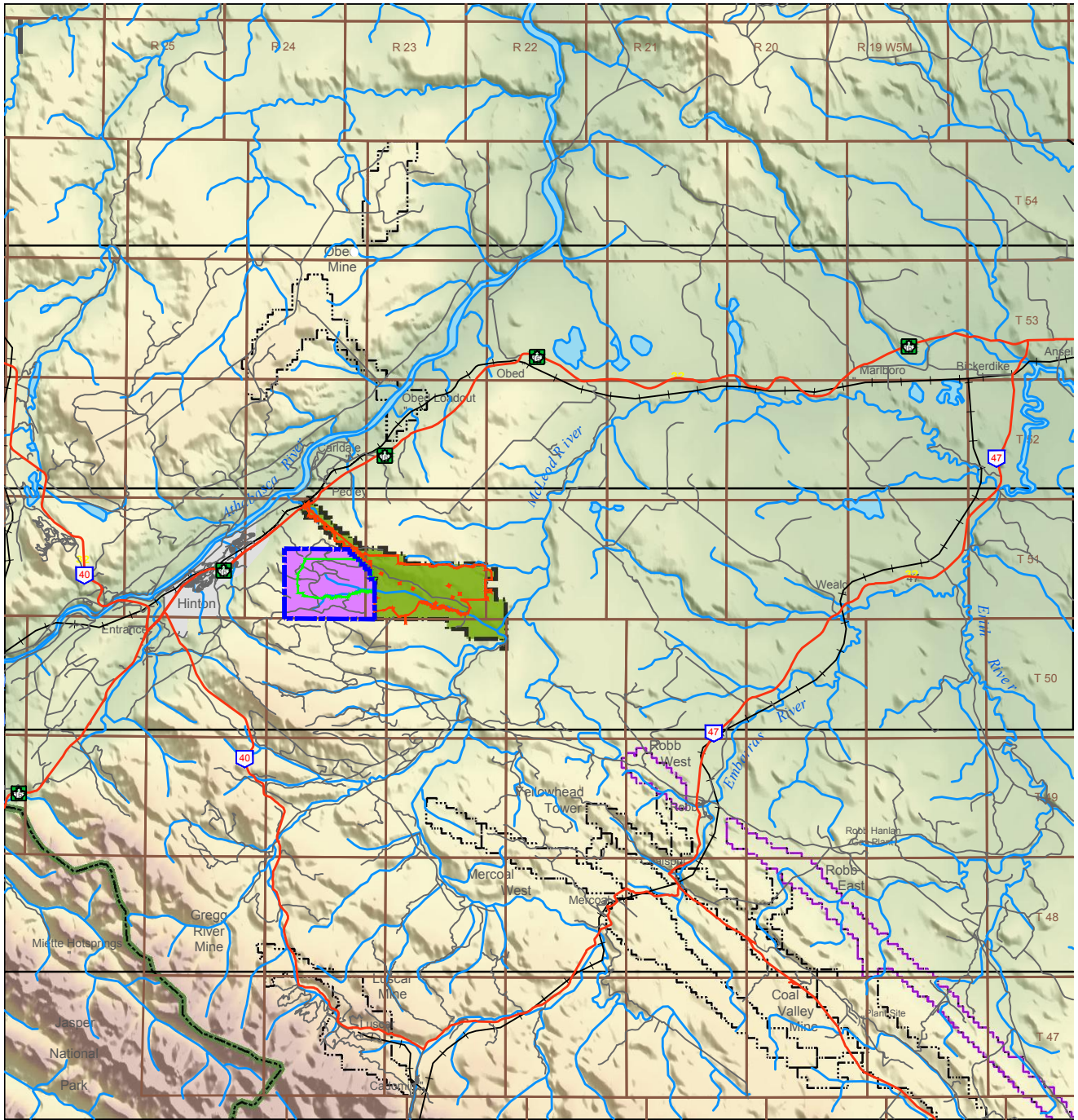


<b>Project Summary Table – Phase II</b>			
Proponent Name:	Coalspur Mines Ltd.	Date:	10/22/2018
Project Name:	Vista Project – Phase II	Company Contact Name and Information:	Amanda Buchanan Environmental Coordinator 780-718-0866
Name of Company that will hold Approval:	Coalspur Mines (Operations) Ltd.	Company Website:	N/A
Type of Project (e.g., in-situ, mine, quarry, upgrader, etc.):	Surface Coal Mine	New Project, Expansion, Additional Phase or Modification:	Expansion
Projected Construction Start (Month/Year):	March 2021	Projected Operation Start (Month/Year):	July 2021
Life of Project (# years, YYYY – YYYY):	14 years; 2021-2035	Project Location (Legal Land Description and Longitude/Latitude) and Municipality:	Portions of Sections 9-16, Twp 51, Rge 24, W5M; Portions of Sections 7 and 18, Twp 51, Rge 23, W5m
Total Project Area (ha):	1,090 ha – Physical surface disturbance; 1,677 ha - Mineral Surface Lease	Private, Federal or Provincial Land:	Provincial
Nearest Residence(s) (km):	3.7 km	Types of Activity (major project processes, components including capacity/size, if available):	Surface Coal Mine with highwall mining, processing and shipping facilities are located on adjacent operation
Feedstocks and design feed rates (maximum daily, annual)	N/A	Products and design production rates (maximum daily, annual)	Coal; 4.6Mt annual, 12,700 daily
Byproducts and wastes (specify types, rates and storage capacities)	Coal refuse facilities located on adjacent operation; rock overburden generated from mining to be placed primarily within mined out pits but also on the adjacent operation as well as a centre dump within the mine pit between different coal seam pits. Overburden produced estimated to be 260 million bank cubic meters	Product storage facilities and capacities	Coal stockpile areas for both raw and cleaned coal will be located on adjacent operations

Nearest First Nation Reserve(s) and Métis Settlements (name and km):	Alexis Cardinal River 73 km SW; O'Chiese 161 km SE, AWN 123 km NW; Ermineskin Cree 278 km	Project Products:	Thermal Bituminous Coal
Power Source (if on site power generation describe quantity (MW) and facilities):	Existing power infrastructure from Phase I mine	Method of Product Transport (e.g., pipeline, rail, truck, etc.):	Rail
Average Production Capacity per Year (specify units):	4.6 million metric tonnes	Infrastructure Requirements (e.g., roads, pipelines, water intake, storage, tankage, etc.):	Topsoil stockpile storage areas, various haul roads internal to mine pit, drainage diversion ditches and sediment control structures
Location of End Market:	International Markets, Primarily Asia	Expected Types of Air Emissions (e.g., SO <sub>2</sub> , NO <sub>x</sub> , CO <sub>2</sub> , etc.):	CO <sub>2</sub> , NO <sub>2</sub> , SO <sub>2</sub> , PM 2.5, CO, VOCs, PAH, Trace Metal Conc, fugitive methane and Ozone
Project By-Products:	Coal Refuse	Types of Solid Wastes Generated:	Overburden Rock; Coal refuse will be generated and stored at adjacent facility
Expected Types of Water Effluent Releases (note the water bodies the effluent will be released to):	All effluent will be released into settling ponds and physically or chemically treated before being released to McPherson Creek or tributaries contributing to McPherson	Nearest Waterway/Waterbody (name and km):	McPherson Creek and unnamed tributaries of McPherson within the proposed disposition 0.1 km south of mine pit
Waste Disposition / Disposal (i.e., Disposal Well, Salt Caverns, Landfill, or Third-Party):	Overburden Rock – In previously mined pits. Coal Refuse – will be placed in existing coal refuse pile on adjacent operation	EPEA Approval Required (Y/N/Unknown):	Yes
Watercourse Crossings (type of crossing, any Class A to C waterbodies):	None anticipated	Water Act License Required (Y/N/Unknown. If yes, purpose, source and estimated volumes):	Y – Plant water, losses to fines storage, evaporation from pond surfaces, augmentation to fish bearing stream flow during low-flow periods. Volumes unknown at this time.
Regulatory Board(s) (AER/AEP/NRCB/AUC):	AER	Waterbodies Required (Y/N/Unknown/NA. If yes, # and ha):	Unknown
Water Act Approval Required (Y/N/Unknown. If yes, purpose):	Yes – disturbing ground, altering flow, direction of flow of surface and groundwater in association with mining of Phase II	Will any of the components or activities associated with the project affect fish and/or fish habitat? (Y/N):	Yes

Identify applicable sections of <i>Designated Physical Activities Regulation</i> pursuant to the <i>Canadian Environmental Assessment Act, 2012</i>	Area of mine operations; Phase II will be an expansion of an existing coal mine	Nearest Water Well (km) (Domestic and Commercial):	Domestic –3.7 km Commercial – Coalspur 0.6 km
Are any works or undertakings proposed to take place in, on, over, under, through or across a navigable water? (Y/N):	No	Access Improvements to Provincial Highway:	No. Access improvements were completed as part of the existing surface mine.
Nearest Provincial Highway (# and distance):	Yellowhead Highway 16 – 4.3 km	Total Area to be Disturbed (ha):	1,090 ha
Traffic Impact Assessment Required (Yes/No/Unknown):	Unknown if update is necessary from original assessment	Post-reclamation Land Use(s):	Managed spruce-lodgepole forest
Identify Existing Land and Water Use(s), Resource Management, or Conservation Plans Within or Near the Project site:	Coal Branch Sub-Regional Integrated Resource Management Plan, West Yellowhead Corridor Regional Integrated Decision, Alberta Grizzly Bear Recovery Plan, Athab Trout Recovery Plan, West Fraser's FMA	Reclamation Start and End (YYYY - YYYY):	Reclamation will be concurrent with mining; 2021 -2035
Decommissioning Start and End (YYYY-YYYY):	2035 – current estimate	Historic Resources Impact Assessment Required (Y/N/Unknown):	Yes
Unique Environmental or Social Considerations (Describe or None):	wildlife, fish and fish habitat, vegetation, soils, wetlands, hydrology and surface water quality, benthic invertebrate, algae, concretion, air, noise, socioeconomic, human health	Estimated Operation Persons-Years of Employment:	375 – 14 years +
Estimated Construction Person-Years of Employment:	Operation and construction personnel will be interchangeable	Method of Transport of Employees to Site (Construction and Operation):	Employee personal vehicles; vans used to transport laborers up to site
Construction or Operation Camp Required (Y/N/Unknown. If yes, on-site or off-site):	No	Is any part of the project on or next to federal lands?	No

Will the project involve the manufacture and storage of explosives (Y/N):	Yes	Aboriginal Groups Involved in Stakeholder Engagement:	Aseniwuche Winewak Nation, Kehewin Cree Nation, O'Chiese Nation – per ACO
Date Stakeholder Engagement Started (Public/Aboriginal):	September 2018	Public Groups involved in Stakeholder Engagement:	Major groups include: Town of Hinton, Town of Edson, Yellowhead County and several others



**Legend**

- Existing Mine Permit
- Existing Mine Permit - Vista Phase 1
- Existing MSL - Vista Phase 1
- Proposed Mine Permit - Vista Phase 2
- Proposed MSL - Vista Phase 2
- Streams
- Waterbodies
- Major Roadways
- Roadways

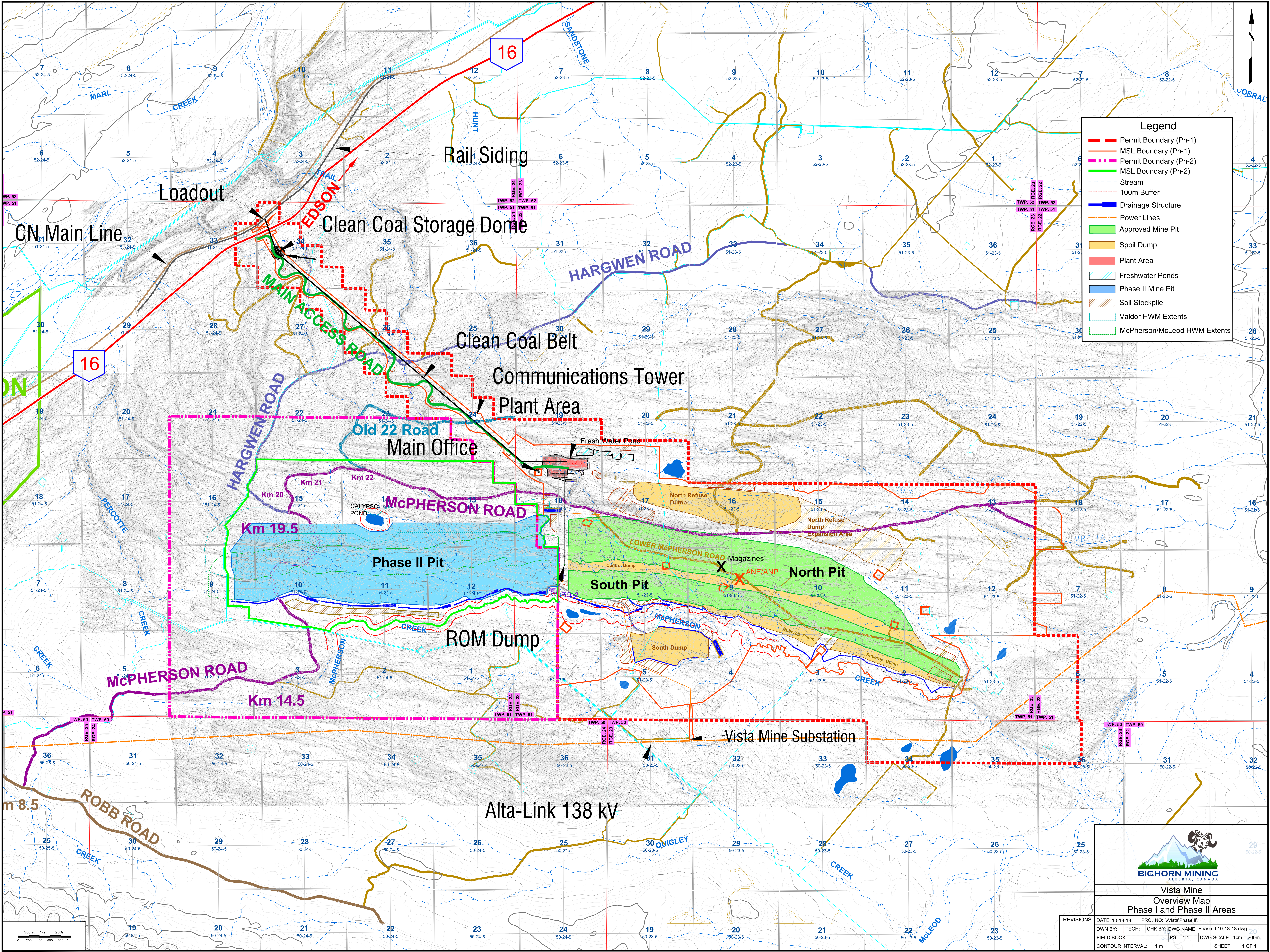


Vista Coal Project Phase 2

TITLE:  
Regional Project Location

DRAWN: DB  
CHECKED:  
DATE: 2018 JUN  
PROJECT:

FIGURE:



**Legend**

- Permit Boundary (Ph-1)
- MSL Boundary (Ph-1)
- Permit Boundary (Ph-2)
- MSL Boundary (Ph-2)
- Stream
- 100m Buffer
- Drainage Structure
- Power Lines
- Approved Mine Pit
- Spoil Dump
- Plant Area
- Freshwater Ponds
- Phase II Mine Pit
- Soil Stockpile
- Valdor HWM Extents
- McPherson/McLeod HWM Extents



**Vista Mine  
Overview Map  
Phase I and Phase II Areas**

REVISIONS	DATE: 10-18-18	PROJ NO: VistaPhase II
DWN BY:	TECH:	CHK BY:
FIELD BOOK:	PS: 1:1	DWG SCALE: 1cm = 200m
CONTOUR INTERVAL: 1m	SHEET: 1 OF 1	

