

# Bighorn Backcountry Public Land Use Zones

## Nordegg Area



The Bighorn Backcountry Public Land Use Zone (PLUZ) and Clearwater County trails are managed to ensure protection of the environment, while allowing responsible recreation use. It is your responsibility to know what, where and when activities are permitted in the area. For additional details refer to the Bighorn Backcountry brochure.

The Nordegg area contains a large trail network. Both non-motorized users and off-highway vehicle users may be on the same trail at the same time.

### Motorized Trails

OHV's may use the roads in Nordegg to access backcountry trails. We ask that you respect the community by obeying speed limits, and reducing noise and dust.

#### Rail Trail

The historic rail line from Rocky Mountain House to Nordegg is being redeveloped as a recreation trail. To date, the Rail Trail is open for use near Nordegg, starting at a Staging Area on Hwy 734 (south of Hwy 11) running to Beaverdam Provincial Recreation Area and continuing to Stolberg.

#### Brazeau Ridge

A major network of OHV trails is located south of Nordegg above the Townsite on Brazeau Ridge. Easiest access is off the Rail Trail.

#### Baldy Mountain

The viewpoint on top of Baldy Mountain makes this a favourite trail for many people. There are several other motorized trails that connect to the Baldy Mountain Trail. Access is off the Baldy Mountain Road or the west end of the Shunda Creek Road.

Baldy Mountain is home to the Baldy Lookout Tower as well as the seasonal lookout observer who watches over the area for smoke indicative of wildfire. When exploring this fantastic observation point, keep in mind that the lookout tower is a place of work as well as a residence and the privacy of the observer must be respected.

#### North-South Connector

This trail has been developed to support travel within Nordegg. It crosses Highway 11 near the Pine Martin Drive intersection and crosses Shunda Creek on a new bridge.

**Note:** Some areas or sections of trail may be closed due to environmental and safety concerns. You are required to obey all posted signs and notices and keep the area in a clean and tidy condition. Off-highway vehicles and snow vehicles must remain on the designated trails at all times which includes designated bridges and water crossings. Please ensure you have the most recent information on the area you are travelling before you arrive.

### All off-highway vehicles and snow vehicles on public land require:

- valid registration and insurance (including those under 50cc);
- licence plate must be visible and properly affixed to the OHV;
- tail lamp on vehicle capable of emitting a red light visible from at least 60 metres (185 feet);
- at least one white headlamp on vehicle front capable of illuminating a person, vehicle or thing from at least 60 metres (185 feet); and
- proper exhaust muffler with spark arrestor.

### Non-Motorized Trails

People come to Nordegg area to enjoy a variety of non-motorized activities including: walking, hiking, mountain biking, skiing and snowshoeing. There are non-motorized trails within the Townsite and the surrounding Bighorn Backcountry.

#### Coliseum Mountain

The Coliseum Trail is our most popular hike. The trail to the summit is 6.5 kilometres with a 635-metre elevation gain. The Coliseum Staging Area is located within Nordegg North Subdivision and can be reached by driving on Shunda Creek Road, to Baldy Mountain Road, to Eagle Drive.

#### Ridgeline

New non-motorized trails have been built on Coliseum Mountain to provide different routes up the mountain. The Ridgeline Trail starts at the Ranger Station and climbs 7.2 kilometres to the summit. Ridgeline is a more challenging route with some steep sections. The new Ranger Station trails connect to either the historic Coliseum Trail, or the newer Ridgeline Trail.

### Shunda Creek Meadows

A series of trails are located in the Shunda Creek Meadows, crossing open grasslands with excellent mountain views. The Meadow trails can be accessed from the Shunda Creek Campground and the Shunda Creek Hostel. The trail also connects to the commercial services south of the highway.

### Brazeau Collieries Historic Mine Site

Access to the historic site is limited to the guided tours during the summer months which can be booked at the Nordegg Heritage Centre. They offer guided walks and an OHV option for those with limited mobility.

### YOU ARE RESPONSIBLE FOR YOUR OWN SAFETY!

Trails within the townsite and the surrounding Bighorn Backcountry Public Land Use Zone are **UNSUPERVISED**. Use at your own risk and to your level of skill.

You may encounter a variety of hazards while you're out on the trail including but not limited to a sudden change in weather, dangerous wildlife and unstable areas on or adjacent to the trails. Be prepared, take the proper gear, carry sufficient water and food, bring extra clothing in case of adverse weather, pay attention to your surroundings and use good judgment and caution while you're out.



### Emergency Contacts

#### 9-1-1 in case of emergency

403-845-4444 Clearwater County for issues within the Nordegg townsite.

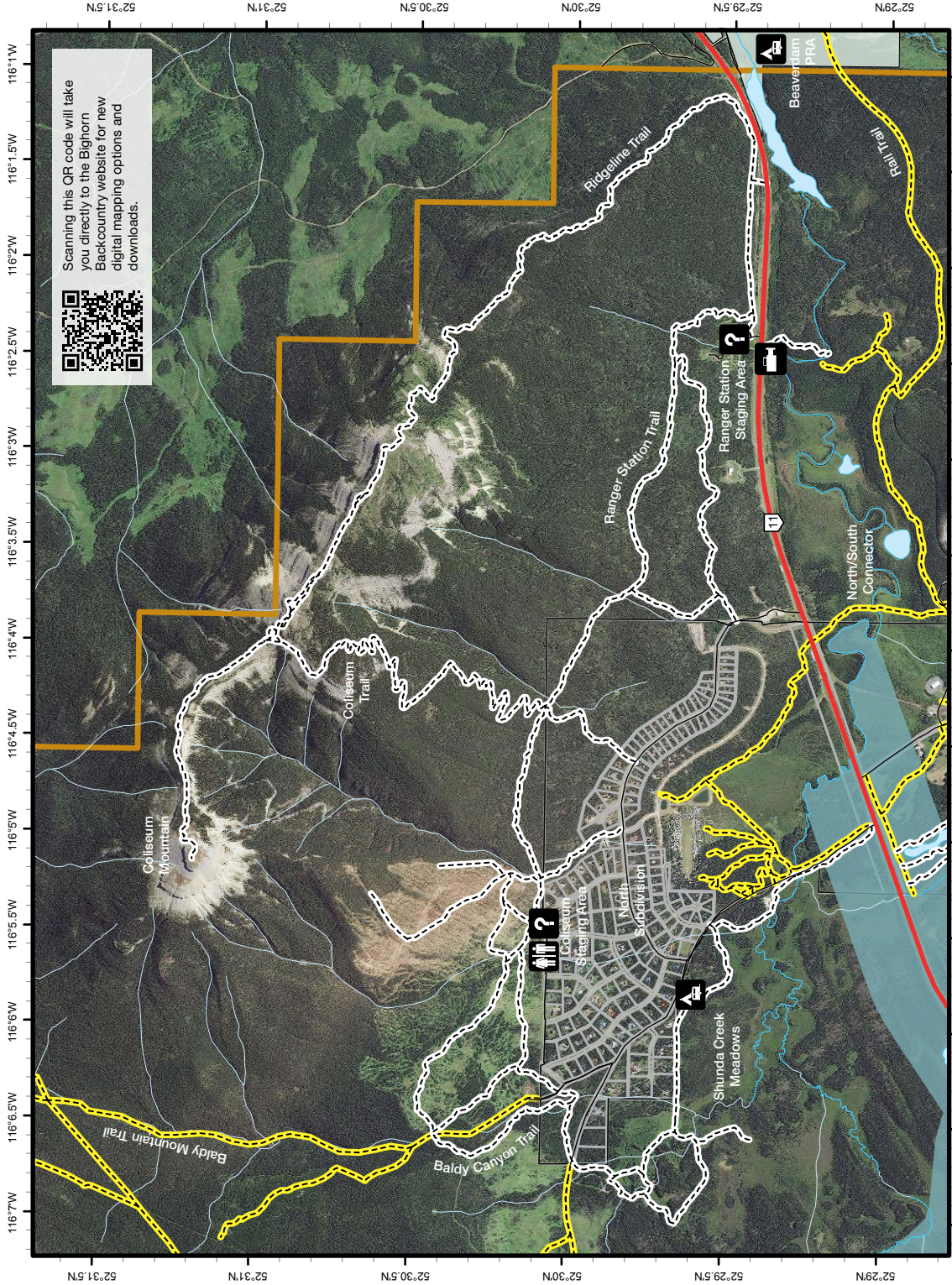
Cellular phone service may or may not be available in this area. 1-866-FYI-FIRE (1-866-394-3473) for Fire Ban information or visit [www.albertafirebans.ca](http://www.albertafirebans.ca).

310-FIRE (310-3473) to report a wildfire. For daily fire hazard information, fire weather forecasts and fire situation reports visit [www.alberta.ca](http://www.alberta.ca).

1-800-642-3800 for Report-A-Poacher hunting and fishing violations and public land abuses.

1-800-222-6514 for Environmental Spill & Incident Reporting.





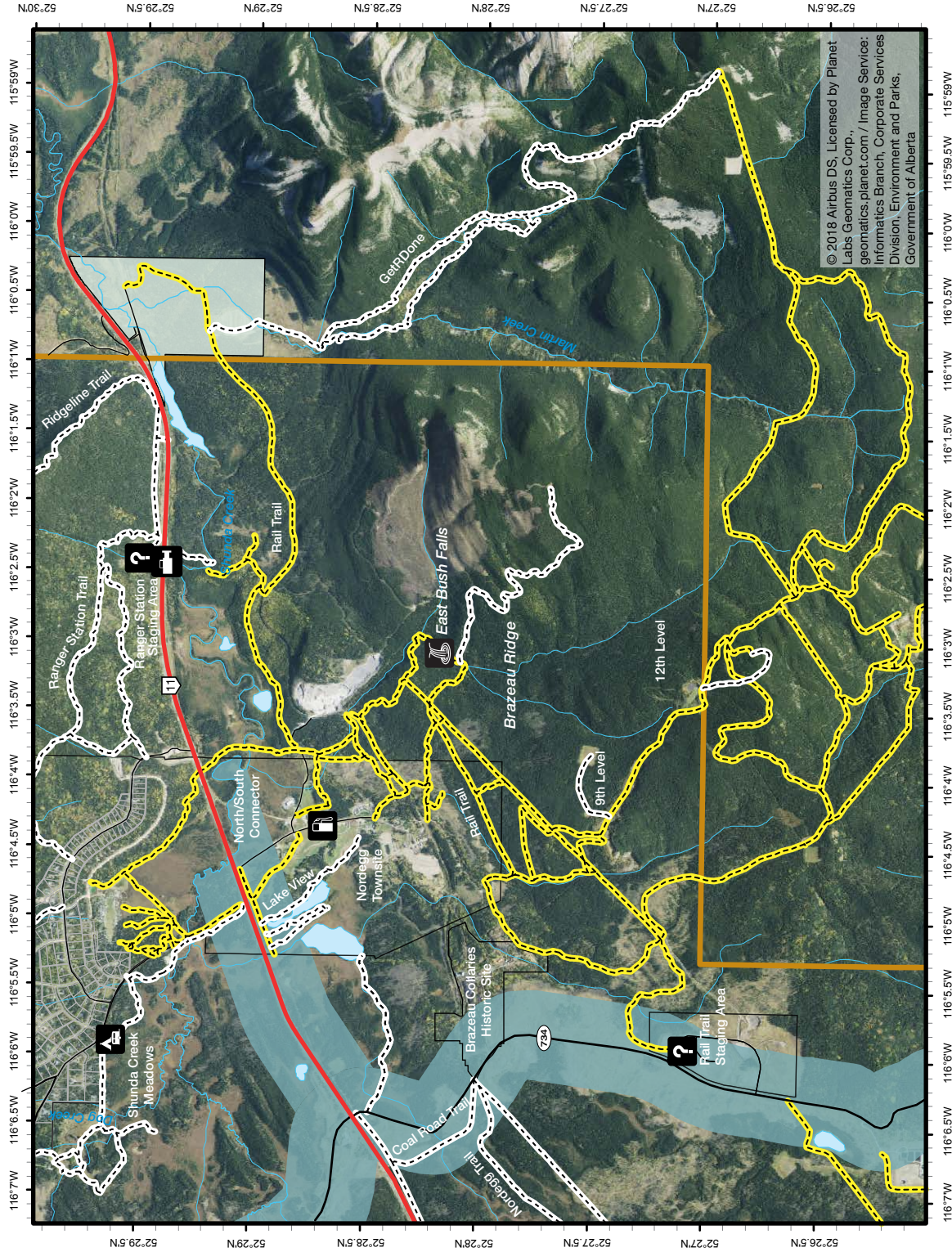
## Legend



- Paved Highway
- Gravel Road, two lane
- Gravel Road, one lane
- Lakes and Rivers
- Wildlife Corridor
- Creeks

## Trail Classification

- Bighorn Backcountry Public Land Use Zones Boundary
- Major trails (only non-motorized use is permitted, unless otherwise posted).
- Trails that are open year-round for motorized off-highway vehicles, snow vehicles and non-motorized users, unless otherwise posted.



© 2018 Airbus DS, Licensed by Planet Labs Geomatics Corp.,  
geomatics.planet.com / Image Service:  
Informatics Branch, Corporate Services  
Division, Environment and Parks,  
Government of Alberta