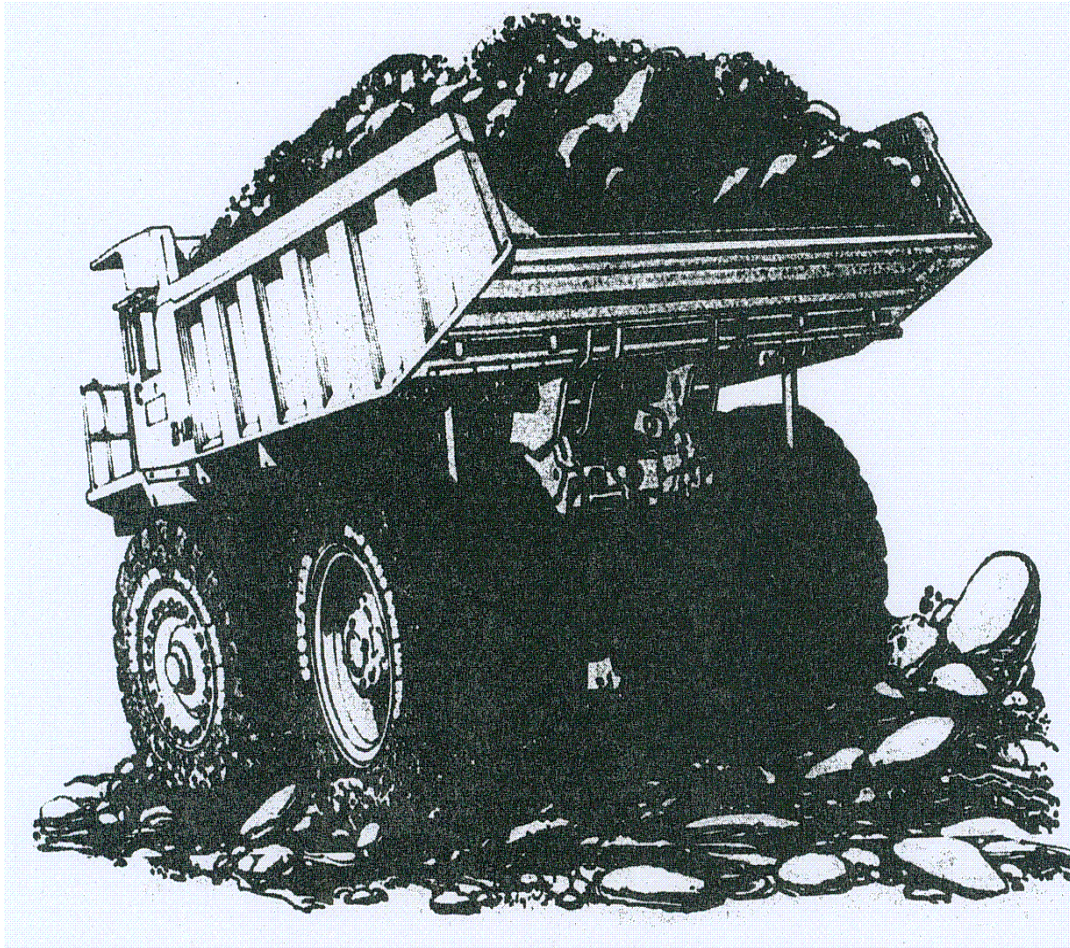


2009 DECEMBER 02
12 noon, EDMONTON

PUBLIC OFFERING OF CROWN COAL RIGHTS



Alberta
ENERGY

PUBLIC OFFERING CONTROL COUNTS FOR 2009.12.02

From	To	Total	Area
LEASES: C0450	C0464	15	17,014.9000 ha.

PUBLIC OFFERING OF CROWN
COAL RIGHTS

(available on our internet site at <http://www.energy.gov.ab.ca>)

DEADLINE

Offers to purchase coal leases (including any subsequent amendments) contained in this notice will **not** be accepted after **12 noon (Mountain Standard Time) on 2009 December 02**.

HOW TO SUBMIT BIDS

1. Bids for leases should be enclosed in one sealed envelope with "**Lease Bids - 2009 December 02**" indicated on the outside of the envelope.
2. Each parcel must be listed on separate letters and must contain the following information:
 - parcel number
 - rental, fee, bonus bid, GST (if applicable) total of monies - separate cheque for each parcel
 - designated representative and lease participants
3. Bids should be delivered or mailed to any person acting for Director, Coal and Mineral Development Unit, at either the Calgary address - 300, AMEC Place, 801 - 6 Avenue SW, T2P 3W2, or the Edmonton address - 7th Floor, Petroleum Plaza North Tower, 9945 - 108 Street, T5K 2G6.

**BIDS ARE ACCEPTED UNTIL 12:00 NOON (MOUNTAIN STANDARD TIME) ON THE PUBLIC OFFERING DATE.
NO EXCEPTIONS.**

AMOUNT OF PAYMENT

1. Your bid letter should mention only the one total dollar amount consisting of bonus, rent at \$3.50/ha or \$50.00, whichever is greater, a fee of \$625.00 and GST (if applicable).
2. A bonus offer of less than \$2.50/ha for a lease will not be considered.
3. The department reserves the right to reject any bid.

FORM OF PAYMENT

1. Payments must be made by cheque only.
2. Companies and individuals that do not have a GST registration number are liable for payment of the Goods and Services Tax on various charges. All registrants must ensure that they provide their GST registration number in writing to the Financial Services Branch @ Fax No. (780) 422-4281.

REMEMBER

1. Requesters of parcels posted in this Notice are expected to bid on all postings that they have requested.
2. If you are the requester of a parcel and fail to bid, you will be charged a penalty of \$625.00 (plus GST) for each parcel unless it is purchased by someone else.
3. Attached to this notice is APPENDIX 1 (if applicable) containing addenda relating to surface access.

RESULTS OF THE PUBLIC OFFERING

1. Your accepted bids will be published on **2009 December 03** at 9 a.m. on the Department of Energy website as noted.
2. All agreements are issued in accordance with the Mines & Minerals Act and its regulations.

2009 November 13
EDMONTON, Alberta

Gary White - Manager
Coal and Mineral Development
Department of Energy

COAL LEASES

LEASE SCHEDULE

PAGE 1

2009, DECEMBER 02

LEASE	HECTARES	LAND DESCRIPTION
C0450	768	4-24-038: 18 4-25-038: 12;24 COAL
C0451	1536	5-23-049: 19;30;31 5-23-050: 6 5-24-049: 35;36 COAL
C0452	1536	5-23-049: 28;29;32;33 5-23-050: 4;5 COAL
C0453	1792	5-24-049: 25-28;33;34 5-24-050: 3S;4S COAL
C0454	1280	5-24-049: 31;32 5-24-050: 5;6;7S;8S COAL
C0455	1024	5-23-050: 7-9;18 COAL
C0456	1280	5-23-050: 16;21;22;27;28 COAL
C0457	1254.9	5-23-050: 17;19L1,L2P,L3-L5,L6P,L7P,L8,L9P,L10P,L11P, L12,L13,L14P,L15P,L16;20;29;30 PORTION(S) LYING OUTSIDE A FORESTRY RESEARCH INSTALLATION. COAL
C0458	1536	5-24-050: 13;14;23-26 COAL

C0459 1536 (CDP000403)
(IR2000702)
5-24-050: 15;16;21;22;27;28
COAL

C0460 1152 (CDP000403)
(IR2000702)
5-24-050: 17;18;20;29;30N
COAL

C0461 1024 (CDP000403)
5-25-050: 2S;3;4;9;10S
COAL

C0462 96 (CDP000403)
5-25-050: 15NE, L1, L8
COAL

C0463 1040 (CDP000403)
(HRM000202)
5-25-050: 15L4, L5;16S, NW, L9, L10, L15;17;20S, NW, L9, L10,
L15;21L3-L5;30W, L1, L2, L7, L10, L15, L16
COAL

C0464 160 (CDP000403)
5-25-050: 21L9, L15, L16;28SE, L3, L5, L6
COAL

15 17,014.90 HA TOTALS **END**

ADDENDA AND CONTACTS APPLICABLE TO THE 2009, DECEMBER 02 PUBLIC OFFERING NOTICE

CDP000403

LEASE C0451
LEASE C0452
LEASE C0453
LEASE C0454
LEASE C0455
LEASE C0456
LEASE C0457
LEASE C0458
LEASE C0459
LEASE C0460
LEASE C0461
LEASE C0462
LEASE C0463
LEASE C0464

ALL LAND(S) IS/ARE WITHIN CATEGORY 4 OF "A COAL DEVELOPMENT POLICY FOR ALBERTA"

SURFACE ACCESS IS NOT AFFECTED

FOR FURTHER INFORMATION, PLEASE CONTACT:

BRIAN HUDSON
BUSINESS UNIT LEADER
ALBERTA DEPARTMENT OF ENERGY
MINERAL DEVELOPMENT
COAL AND MINERAL DEVELOPMENT
9945 108 ST FLOOR 7
EDMONTON AB T5K 2G6 (780) 427-9077

HRM000202

LAND DESCRIPTION
LEASE C0463 5-25-050: 30W, L1, L2, L7, L10, L15, L16

IS/ARE WITHIN AN HISTORICAL RESOURCES MANAGEMENT AREA. PURSUANT TO SEC. 37(2) OF THE HISTORICAL RESOURCES ACT, AN HISTORICAL RESOURCES IMPACT ASSESSMENT MAY BE REQUIRED PRIOR TO CONDUCTING ANY SURFACE DISTURBANCE.

SURFACE ACCESS IS SUBJECT TO SPECIFIC RESTRICTIONS

FOR FURTHER INFORMATION, PLEASE CONTACT:

DEAN WETZEL
LAND USE PLANNER, OIL SANDS
PARKS, RECREATION AND CULTURE TOURISM
HERITAGE RESOURCE MANAGEMENT BRANCH
LAND USE PLANNING SECTION
OLD ST STEPHEN'S COLLEGE
8820 112 ST NW
EDMONTON AB T6G 2P8 (780) 431-2332

APPENDIX 1

PAGE 2

ADDENDA AND CONTACTS APPLICABLE TO THE 2009, DECEMBER 02 PUBLIC OFFERING NOTICE

IR2000701 LAND DESCRIPTION
LEASE C0456 5-23-050: 22SP,NEP;27SEP

IS/ARE WITHIN ZONE 2 (CRITICAL WILDLIFE) OF THE COAL BRANCH INTEGRATED RESOURCE PLAN.

SURFACE ACCESS IS SUBJECT TO SPECIFIC RESTRICTIONS

FOR FURTHER INFORMATION, PLEASE CONTACT:

DAVE HOBSON
WILDLIFE BIOLOGIST
DEPT. OF SUSTAINABLE RESOURCE DEV
EDSON OFFICE - FISH AND WILDLIFE
111 54 ST SUITE 203
EDSON AB T7E 1T2 (780) 723-8244

IR2000702 LAND DESCRIPTION
LEASE C0452 5-23-049: 28NP, SE, SWP;29SEP;33SEP
LEASE C0455 5-23-050: 9NP;18NP, SEP
LEASE C0456 5-23-050: 16SP,NEP;22SP,NEP;27EP
LEASE C0457 5-23-050: 17SP,NWP
LEASE C0458 5-24-050: 13NP,SWP;14P
LEASE C0459 5-24-050: 15SP;16SP
LEASE C0460 5-24-050: 17SP;18P

IS/ARE WITHIN ZONE 2 (CRITICAL WILDLIFE) OF THE COAL BRANCH INTEGRATED RESOURCE PLAN.

SURFACE ACCESS IS SUBJECT TO SPECIFIC RESTRICTIONS

FOR FURTHER INFORMATION, PLEASE CONTACT:

JEFF KNETEMAN
WILDLIFE BIOLOGIST
DEPT. OF SUSTAINABLE RESOURCE DEV
HINTON OFFICE - FISH AND WILDLIFE
131 CIVIC CENTRE RD FLOOR 3
HINTON AB T7V 1E6 (780) 865-8264

END