

Current Facts & Statistics

Fall 2011 ISBN No. 978-1-4601-0241-1 (On-line Edition) Pub No. I/610
Environment and Sustainable Resource Development

Forest Management Plans

The Alberta government practices and promotes sustainable forest management (Figure 1). Forested public land is managed to maintain and enhance the long-term health and productivity of forest ecosystems. The *Forests Act* is the authority for Alberta's forest management program and identifies sustainable forest management as a key outcome. This ensures ecological, economic and social benefits to Alberta's present and future generations. Forest Management Plans are approved for forest lands before forest operations are scheduled and conducted.

The department is responsible for managing timber on forested public land within the Green Area. This land, as well as some adjacent areas in the White Area, is administered using administrative units, called Forest Management Units (FMUs). A forest tenure system is used to allocate timber harvesting rights in the FMUs to companies and individuals.

There are three forest tenure types: 1. Forest Management Agreement (FMA), 2. Timber Quota and 3. Timber Permit. The forest tenure specifies details, such as the term of the agreement, tree species, the location, and the responsibilities for reforestation and forest management planning.

FMA holders prepare Forest Management Plans for the FMU areas the company has rights to operate. The Alberta government prepares Forest Management Plans for non-FMA FMUs.

Forest Management Plans are redone every 10 years using a collaborative planning process that involves the public, First Nations, the forest industry, other resource users and various provincial government agencies.

Figure 1. Sustainable management of Alberta forests.



Forest Management Plans document how the forests are proposed to be managed over a 200 year planning horizon. This includes details of where, when and how trees will be regenerated following harvesting, as well as forested areas excluded from harvesting. The plans also evaluate forest biodiversity information, and the history and risk of natural disturbance (e.g. wildfire, and insect or disease outbreaks).

Key to planning is assessing the current forest condition and then forecasting the changes that occur as the plan is implemented to achieve the desired future forest condition. This work enables comparisons at various points in time of planned outcomes against actual outcomes and forms the basis for the continual improvement process of plan, do, check and adjust.

Current Statistics

Tables 1 and 2 summarize the status of approved Forest Management Plans in Alberta for the timber year ending April 30, 2011. These tables show either the FMA or FMU where timber

harvesting was scheduled, the effective date of the current Forest Management Plan and the scheduled submission date of the next plan.

Table 1. Effective dates and scheduled submission dates of Forest Management Plans prepared by Forest Management Agreement holders in Alberta as of April 30, 2011.

Forest Management Agreement holders	Land-use Framework Planning Region	Green Area (%) ²	Effective date of the approved plan	Scheduled submission date of next plan
ALPAC Forest Products Incorporated, Crestbrook Forest Industries Ltd., & MC Forest Investment Incorporated & Kanzaki Paper Canada Inc. (Boyle)	Lower Athabasca	61	1-May-2007	1-May-2015
	Lower Peace	35		
	Upper Athabasca	4		
ANC Timber Ltd. (Whitecourt)	Upper Athabasca	12	1-May-2006	19-Nov-2010
	Upper Peace	88		
Blue Ridge Lumber Inc. (Whitecourt)	Upper Athabasca	49	1-May-2008	1-May-2018
	Upper Peace	51		
Canadian Forest Products Ltd. (Grande Prairie)	Upper Peace	100	1-May-2009	30-Apr-2012
Daishowa-Marubeni International Ltd. -East (Peace River)	Lower Peace	100	1-May-2008	31-Dec-2010 ¹
Daishowa-Marubeni International Ltd. -West (Peace River)	Lower Peace	34	1-May-2008	1-Sep-2009 ¹
	Upper Peace	67		
Gordon Buchanan Enterprises Ltd. and Tolko Industries Ltd. (High Prairie)	Lower Peace	23	1-May-2010	30-April-2014 ¹
	Upper Athabasca	45		
	Upper Peace	31		
Manning Diversified Forest Products Ltd. (Manning)	Lower Peace	56	1-May-2007	2-Dec-2011
	Upper Peace	44		
Millar Western Forest Products Ltd. (Whitecourt)	Upper Athabasca	85	1-May-2007	14-May-2017
	Upper Peace	15		
Slave Lake Pulp Corporation (Slave Lake)	Upper Athabasca	98	1-May-2009	30-Apr-2019 ¹
	Upper Peace	2		
Spray Lake Sawmills (1980) Ltd. (Cochrane)	North Saskatchewan	7	1-May-2007	1-Sep-2018
	Red Deer	1		
	South Saskatchewan	92		
Sundance Forest Industries Ltd. (Edson)	North Saskatchewan	18	1-May-2009	30-Apr-2017
	Upper Athabasca	82		
Sundre Forest Products Inc. (Sundre)	North Saskatchewan	97	1-May-2007	30-Apr-2015
	Red Deer	1		
	South Saskatchewan	2		
Tolko Industries Ltd. (High Prairie)	Lower Peace	61	1-May-2004	1-May-2014 ¹
	Upper Athabasca	20		
	Upper Peace	19		
Tolko Industries Ltd. and Footner Forest Products Ltd. (High Level)	Lower Peace	100	1-May-2003	1-Oct-2010 ¹
Tolko Industries Ltd., Vanderwell Contractors (1971) Ltd. and Alberta Plywood Ltd. (Slave Lake)	Lower Peace	22	1-May-2009	30-Apr-2018 ¹
	Upper Athabasca	78		
Vanderwell Contractors (1971) Ltd. (Slave Lake)	Upper Athabasca	100	1-May-2005	1-May-2015 ¹
West Fraser Mills Ltd. (Hinton)	Upper Athabasca	99	1-May-2010	30-Sep-2014
	Upper Peace	<1		
Weyerhaeuser Company Limited (Grande Prairie)	Upper Peace	100	1-May-2007	1-Apr-2011
Weyerhaeuser Company Limited –Pembina Timberland (Edmonton)	North Saskatchewan	50	1-May-2007	1-Apr-2016
	Upper Athabasca	50		

¹Date under review. ²This includes non-FMA portions of FMUs identified in the FMA Forest Management Plan defined forest area and have been rounded to the nearest percentage.

Current Statistics cont'd

Table 2. Effective dates and scheduled submission dates of Forest Management Plans prepared by the department for non-FMA Forest Management Units on Alberta public land as of April 30, 2011.

Forest Management Unit	Land-use Framework Planning Region	Effective date of the approved plan	Scheduled submission date of next plan ¹
A9	Lower Athabasca	30-Aug-2001	1-May-2016
A10	Lower Athabasca	1-May-1986	1-May-2016
C5	South Saskatchewan	1-May-2010	1-May-2020
E8	Upper Peace	1-May-2007	1-May-2017
FO1	Lower Peace	1-Dec-1988	1-May-2018
F11	Lower Peace	19-Jan-2000	1-May-2012
F14	Lower Peace	1-May-1986	1-Mar-2010 ³
F23	Lower Peace	3-Mar-2004	30-Dec-2009 ³
G12	Upper Peace	21-Mar-1991	1-Jun-2010 ³
G14	Upper Peace	10-Nov-2003	1-May-2018
PO1	Upper Peace	15-Jan-1990	1-Mar-2010 ³
PO3	Upper Peace	15-Jan-1990	1-Mar-2010 ³
P14	Lower Peace	1-May-2010 ²	1-May-2020
R11	North Saskatchewan	1-May-2007	1-May-2017
S10	Lower Peace	10-Jan-2002	31-Dec-2010
S14	Lower Peace	17-Nov-1998	1-May-2018
S16	Upper Athabasca	1-May-1986	31-Dec-2010

¹Non-FMA Forest Management Units with marginal commercial timber supplies do not have plans scheduled at this time.

²Timber supply analysis only. ³Date under review.

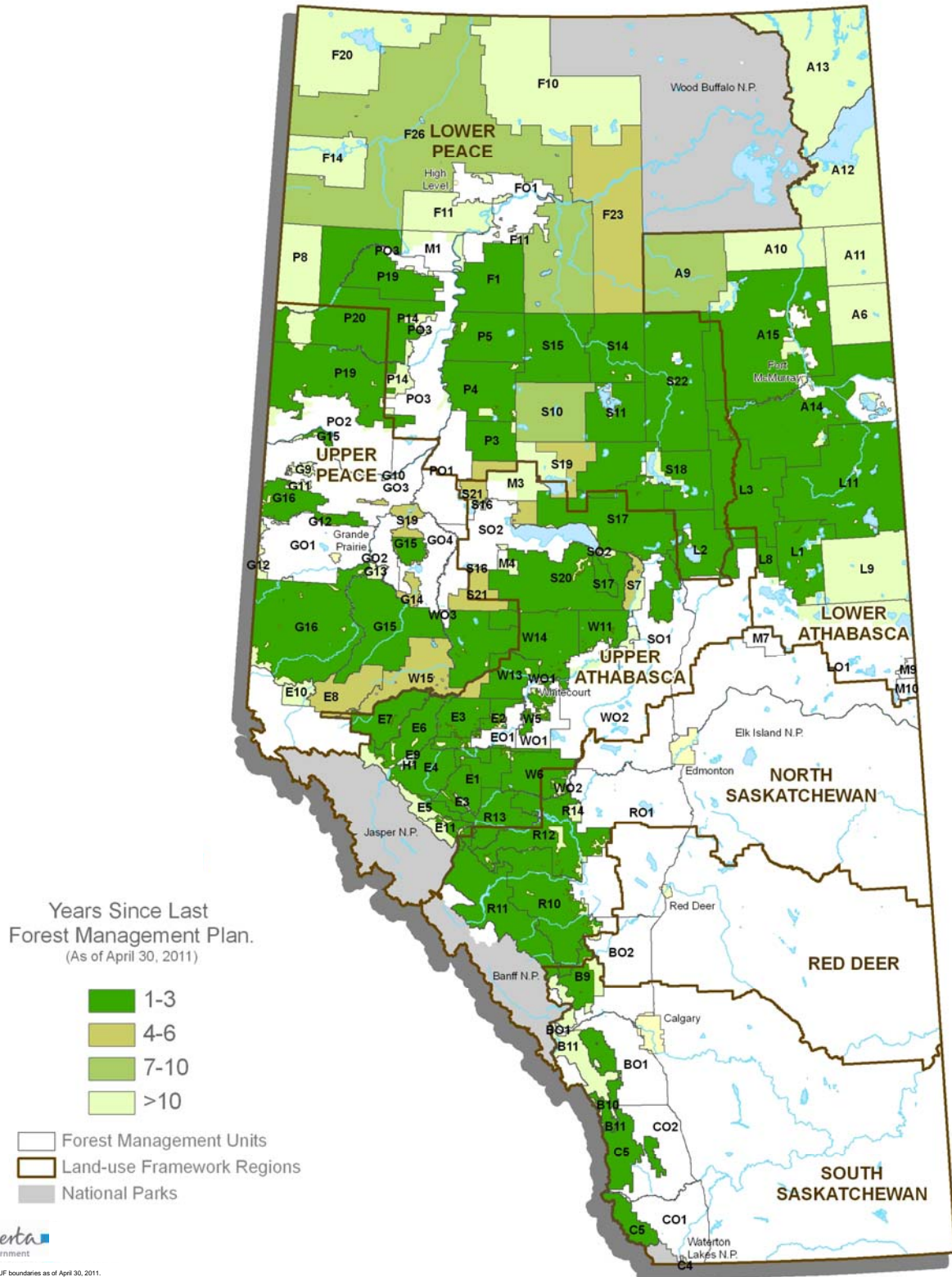
Figure 2 is a map documenting the age of approved Forest Management Plans in Alberta. Plans are scheduled for update every 10 years. Updates may be more frequent where significant forest changes occur, e.g. wildfire, disease or insect outbreaks, such as mountain pine beetle.

Plans remain in effect until they are replaced by an updated and approved plan.

The data presented includes FMAs and FMUs with active timber harvesting as of April 30, 2011.

Current Statistics cont'd

Figure 2. Forest Management Units by Forest Management Plan Age as of April 30, 2011.



Current Statistics cont'd

Figure 3 identifies a total of 72.75 per cent of Alberta's total FMU area with approved Forest Management Plans less than 7 years old. The

data presented only includes FMAs and FMUs with active timber harvesting as of April 30, 2011.

Figure 3. Percentage of Forest Management Unit (FMU) Area by Forest Management Plan Age as of April 30, 2011.

