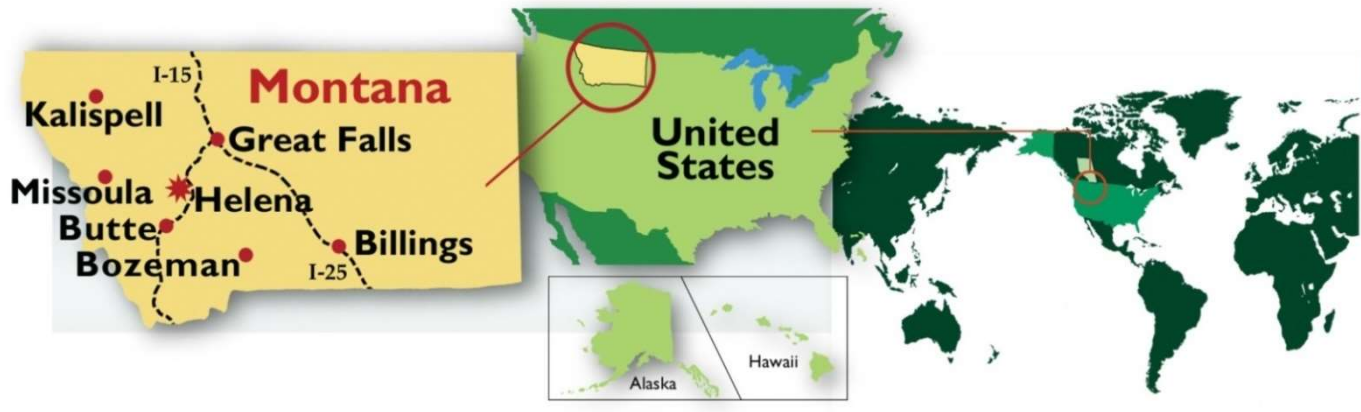


Montana-Alberta Relations



PROFILE

Capital: Helena

Population: 1,032,949 (2015 estimate)

Language: English

Government: Bicameral state government

Head of Government:

Governor Steve Bullock (D)
Second Term (term expires January 2021)
Two consecutive term limit

Currency: U.S. Dollar (USD)

\$1 CAD = \$0.76 USD (January 2017)

Gross State Product (GSP):

US\$45.2 billion (2015)

GSP Per Capita: US\$39,046 (2015)

Unemployment Rate: 4.0% (December 2016)

Key Industry Sectors: wheat, chemicals, industrial machinery, vehicle parts, mining, forestry, pharmaceutical products, aircraft

Main Cities: (2015 estimate)

- Billings: 110,263
- Billings Metro Area: 168,283
- Missoula: 71,022
- Missoula Metro Area: 114,181
- Great Falls: 59,683
- Bozeman: 43,405
- Bozeman Metro Area: 100,739
- Butte-Silver Bow: 33,922
- Helena: 30,581
- Helena Metro Area: 78,063

DID YOU KNOW?

- 89% of Montana's population is employed by small business.
- Like Alberta, Montana has a large prairie, with a grain economy, but also a significant mountain region, with large forestry and mineral industries.
- The Waterton-Glacier International Peace Park straddles the Alberta-Montana border.

RELATIONSHIP OVERVIEW

- In May 2016, over 200 firefighters traveled from Idaho and Montana to assist with firefighting efforts in the Fort McMurray area.
- Montana is the only state bordering Alberta, and is an important conduit for Alberta's exports to the rest of the U.S.
- Lethbridge, Alberta and Great Falls, Montana, have a twinning relationship. Both cities are involved in various initiatives through the Advisory Commission on International Relationships and the Lethbridge Twinning Society.
- Alberta oil supplies the refinery in Billings, Montana.
- The Canadian Association of Petroleum Producers has identified 10 Montana companies that supply equipment, parts and services used in developing Alberta's oil sands.

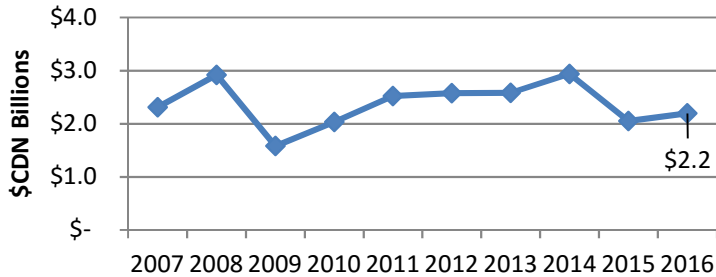
SHARED ORGANIZATIONS

- Council of State Governments (CSG) National
- CSG West
- National Association of State Departments of Agriculture (NASDA)
- Pacific NorthWest Economic Region (PNWER)
- Ports-to-Plains Alliance (PTP)
- Western Association of State Departments of Agriculture (WASDA)
- Western Governors' Association (WGA)

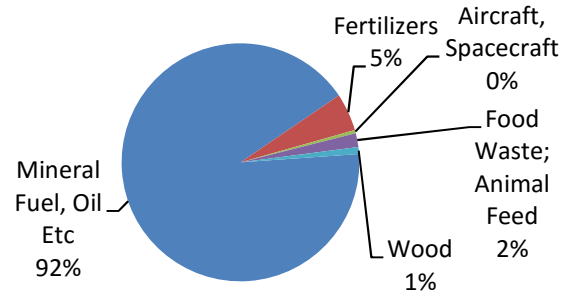
ENVIRONMENT

- The St. Mary and Milk Rivers traverse the Alberta-Montana border. Alberta and Montana jointly manage this resource.
- Alberta and Montana's water management partnership predates the International Joint Commission's call for state-province watershed boards.
- Alberta and Montana cooperate on wildlife conservation and fire management strategies along the border area.
- Alberta and Montana signed a Memorandum of Understanding (MOU) in 2007 regarding cooperation on the Crown of the Continent, a unique ecosystem located in Waterton Glacier National Park.

Alberta's Exports to Montana, 2007-2016



Alberta's Exports to Montana, 2012-2016



ENERGY/NATURAL GAS

- Montana and Alberta are part of the Western Energy Corridor Initiative to develop carbon neutral and environmentally suitable unconventional fuel sources. A carbon capture and storage framework is also under development.
- Montana approved a renewable energy standard in April 2005, requiring 15% of the state's energy to come from renewable sources by 2015. As of 2015, approximately 12% of Montana's energy production came from renewable sources.
- The U.S. arm of Calgary-headquartered Enerplus Resources USA Corp. was the third largest producer of oil in Montana. In 2015, the company produced 106,524 barrels of oil per day.
- Calgary-based Connacher Oil and Gas Limited is an integrated oil sands company that owns and operates a 9,500 barrel per day heavy oil refinery in Great Falls, Montana. This is the closest refinery in the U.S. to the Alberta oil sands.
- Montana holds one-fourth of U.S. recoverable coal reserves.
- Calgary-based Montana Alberta Tie Ltd. received final regulatory approvals in October 2008 from the Canadian and U.S. governments for a privately-funded, 600 megawatt, 230-kilovolt power transmission line between Alberta and Montana. Enbridge assumed ownership of the project with its acquisition of Tonbridge Power Inc. in October 2011. As of September 2013, the line is fully operational.
- Wind energy projects located in Montana have contracted to use the full capacity of the new Montana Alberta Tie line.

AGRICULTURE

- Alberta's 2016 agriculture and food exports to Montana totalled \$71 million. Top exports included oilseed (\$27 million), barley (\$9 million), prepared animal feed (\$6 million), wheat (\$5 million) and seeds for sowing (\$5 million).
- Alberta's 2016 agriculture imports from Montana totalled \$54 million.
- Business opportunities for Alberta companies exist in agricultural export areas such as wheat, barley and prepared animal feed.
- Montana ranks third among the states in total wheat production and approximately 80% of Montana's wheat crop is exported out to buyers across the world.
- Montana and Alberta, along with 5 other Mid-West/Great Plains states, and 2 other Canadian provinces are involved with The Protein Highway initiative. This initiative is designed to enhance cross-border collaboration among entrepreneurs, researchers and investors to stimulate economic growth and meet the global demand for plant-derived protein.
- On July 29, 2016, former President Obama signed into law the Genetically Modified Organism (GMO) labeling bill creating a national mandatory system where food makers must disclose GMO data. Laws and regulations under this bill will apply to both domestic and foreign-produced goods.

TRADE AND INVESTMENT

- From 2012-16, Alberta's average annual exports to Montana were \$2.46 billion.
- In 2016, Alberta's exports to Montana totalled \$2.2 billion.
- Alberta's merchandise exports to Montana consist of oil and natural gas, fertilizers, food wastes, and cereals.
- The majority of exports to Montana are related to the oil and gas industry.

- In 2016, Alberta's imports from Montana totalled \$215 million, specifically in cement, quicklime, and mineral oils.

EMERGING OPPORTUNITIES

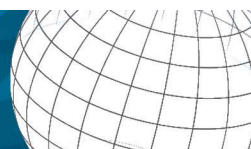
- The aerospace industry is an area that offers potential for collaboration and opportunity. Similarities in the areas of aerospace maintenance, repair and overhaul capabilities, strong research and academic communities, and common interests in developing and commercializing emerging technologies, are examples of the possibilities emerging in this sector.

TRANSPORTATION

- Since August 2003, Alberta and Montana operate a single Joint Use Vehicle Inspection Station at the Coutts/Sweetgrass border crossing.

EDUCATION

- The University of Alberta and University of Montana have an agreement for student and faculty exchanges, focusing on natural resources, environment and business.
- Lethbridge College, the Southern Alberta Institute of Technology (SAIT), and Medicine Hat College have college transfer and course recognition agreements with the University of Great Falls.
- In 2004, SAIT was approved by the Montana Post-Secondary Educational Opportunities Council to participate in their annual student recruitment fairs.
- Olds College has a transfer agreement with Montana State University-Northern.
- Other Alberta institutions, such as NAIT, work in partnership with Montana on specific projects.
- In 1998, Alberta and Montana signed an agreement to provide for cross-border schooling of Grades 1-12 for students living along the border.



EMERGENCY MANAGEMENT

- Alberta and Montana work together to improve public safety and emergency management entities' ability to effectively respond to emergencies in the border region.
- In 2005, this ongoing relationship was given more structure with the establishment of the Western Border Region Interoperability Working Group, which includes representatives from all three levels of government.
- Law enforcement and emergency first responders from Alberta and Montana regularly participate in joint exercises, responding to simulated emergencies at or near the border.
- In October 2014, Alberta and Montana signed an MOU that allows for coordinated and comprehensive emergency management cooperation between the two jurisdictions.

RECENT VISITS/MISSIONS

- July 2015: Governor Steve Bullock led a trade mission to Alberta to participate in the Global Petroleum Show.
- January 2015: Alana DeLong, MLA Calgary Bow, travelled to Helena, Montana to participate in a PNWER mission to meet with state legislators.

DIPLOMATIC REPRESENTATION

- His Excellency Bruce Heyman, the U.S. Ambassador to Canada in Ottawa, stepped down on January 20, 2017. The position is currently vacant.
- The Canadian Ambassador to the U.S. in Washington, D.C. is David MacNaughton.
- Tom Palaia is the U.S. Consul General in Calgary, Alberta.
- The Canadian Consulate responsible for Montana is located in Denver, Colorado. Stéphane Lessard is the Consul General.
- Gitane De Silva is Alberta's Senior Representative to the U.S. in Washington D.C.