

DESIGN, BUILD, FINANCE and OPERATE
EVAN-THOMAS WATER AND WASTEWATER TREATMENT FACILITY UPGRADE
KANANASKIS COUNTRY, ALBERTA, CANADA

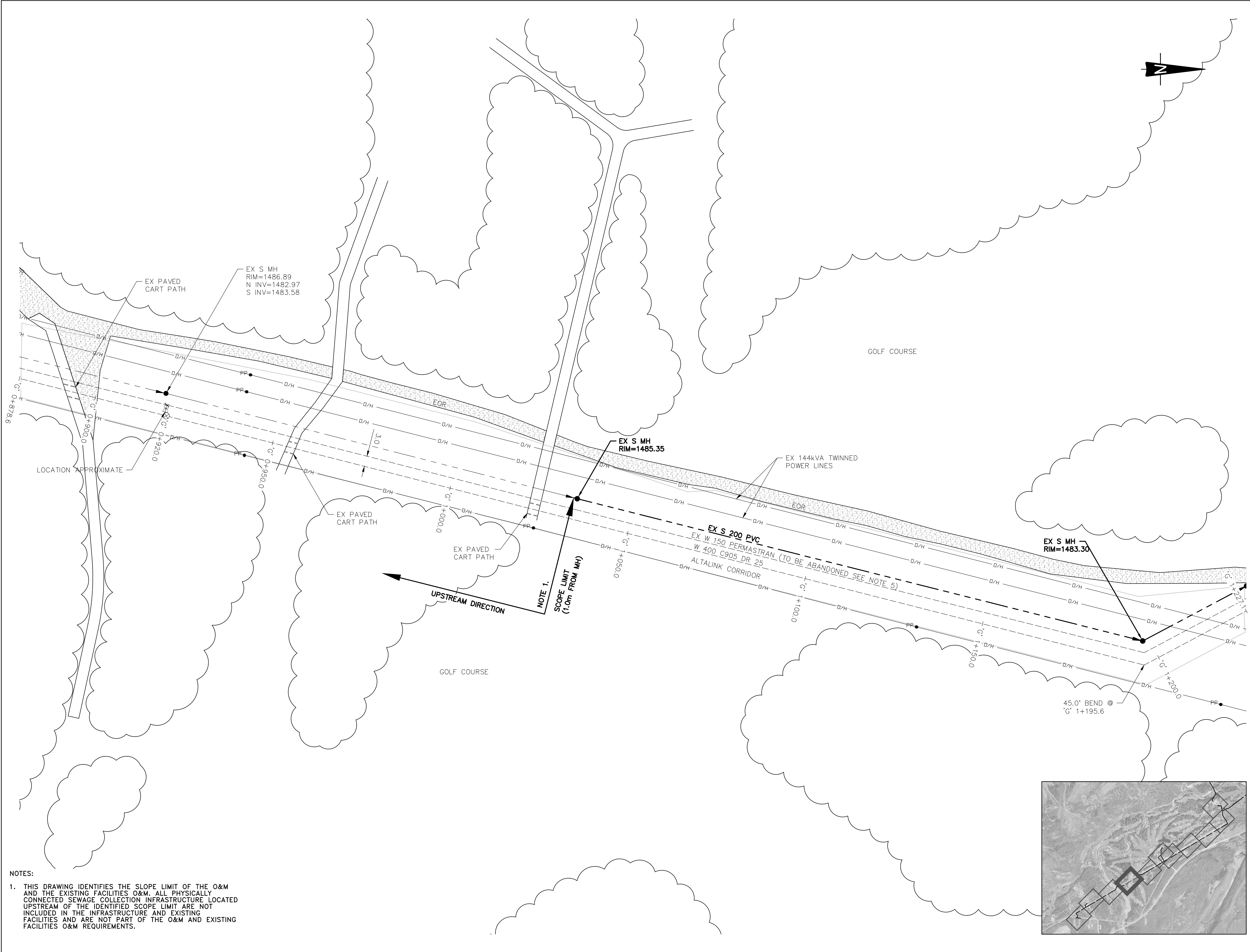
SCHEDULE 18

APPENDIX A - INFRASTRUCTURE
and EXISTING FACILITIES LIMITS
18-A-1.01 TO 18-A-2.03

DRAWING INDEX		
18-B-1.01	1 of 3	COVER SHEET
18-B-1.02	2 of 3	DRAWING INDEX
18-B-1.03	3 of 3	LEGEND
18-B-2.01	1 of 3	SEWAGE COLLECTION - SCOPE LIMIT FROM MOUNT KIDD R.V. PARK
18-B-2.02	2 of 3	SEWAGE COLLECTION - SCOPE LIMIT FROM BOUNDARY RANCH AND EMERGENCY SERVICES CENTRE
18-B-2.03	3 of 3	SEWAGE COLLECTION - SCOPE LIMIT FROM NAKISKA SKI HILL

LEGEND

PROPOSED		EXISTING	PROPOSED		EXISTING
	WATER MAIN			SWALE	
	SANITARY MAIN & 5A MANHOLE			TREELINE	
	STORM MAIN & 5A MANHOLE			CULVERT	
	SNOW-MAKING PIPING			WATER VALVE	
	TELUS LINE & 5A MANHOLE			FIRE HYDRANT & 150 LEAD	
	SHAW CABLE			PLUG & REDUCER	
	GAS LINE			TRANSITION COUPLER	
	FIBRE OPTIC LINE			AIR RELEASE / AIR VACUUM MANHOLE AND VALVE	
	UNDERGROUND POWER LINE			DRAIN MANHOLE AND VALVE	
	OVERHEAD POWER LINE			BUILDING	
	FENCE			LIGHT STANDARD & POWER POLE	
	EDGE OF ROAD			TEST HOLE	
	CONSTRUCTION ACCESS ROUTE			TEST HOLE PIEZOMETER	
	CURB & GUTTER			TEST PIT	
	GRAVEL ROAD SURFACE				
	DIRT ROAD SURFACE				
	SIDEWALK				
	LANDS				
	20.0m WIDE WORK ZONE				
	SAW-CUT ASPHALT				



NOTES:
1. THIS DRAWING IDENTIFIES THE SLOPE LIMIT OF THE O&M AND THE EXISTING FACILITIES O&M. ALL PHYSICALLY CONNECTED SEWAGE COLLECTION INFRASTRUCTURE LOCATED UPSTREAM OF THE IDENTIFIED SCOPE LIMIT ARE NOT INCLUDED IN THE INFRASTRUCTURE AND EXISTING FACILITIES AND ARE NOT PART OF THE O&M AND EXISTING FACILITIES O&M REQUIREMENTS.

REMARKS

1. ALL ELEVATIONS AND DIMENSIONS IN METRES AND PIPE SIZES IN MILLIMETRES UNLESS NOTED OTHERWISE.
2. THE PURPOSE OF THIS DRAWING IS TO IDENTIFY THE EXTENT OF THE O&M AND THE EXISTING FACILITIES O&M FOR THE SEWAGE COLLECTION INFRASTRUCTURE. ANY INFORMATION SHOWN ON THIS DRAWING, SUCH AS THE LOCATION OF ALL UNDERGROUND UTILITIES, INCLUDING BUT NOT LIMITED TO GAS, OIL, TELEPHONE, PIPELINES, ELECTRICAL HAS BEEN PREPARED IN GOOD FAITH, AND DOES NOT PURPORT TO BE ACCURATE, COMPREHENSIVE OR TO HAVE BEEN INDEPENDENTLY VERIFIED AND IS NOT TO BE RELIED UPON.

DATE	CODE	REVISIONS ITEMS	DRAWN BY	APPROVED BY

CONSULTANTS

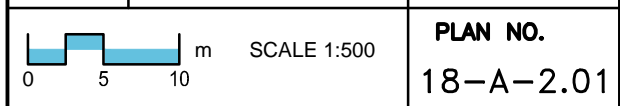
AECOM 

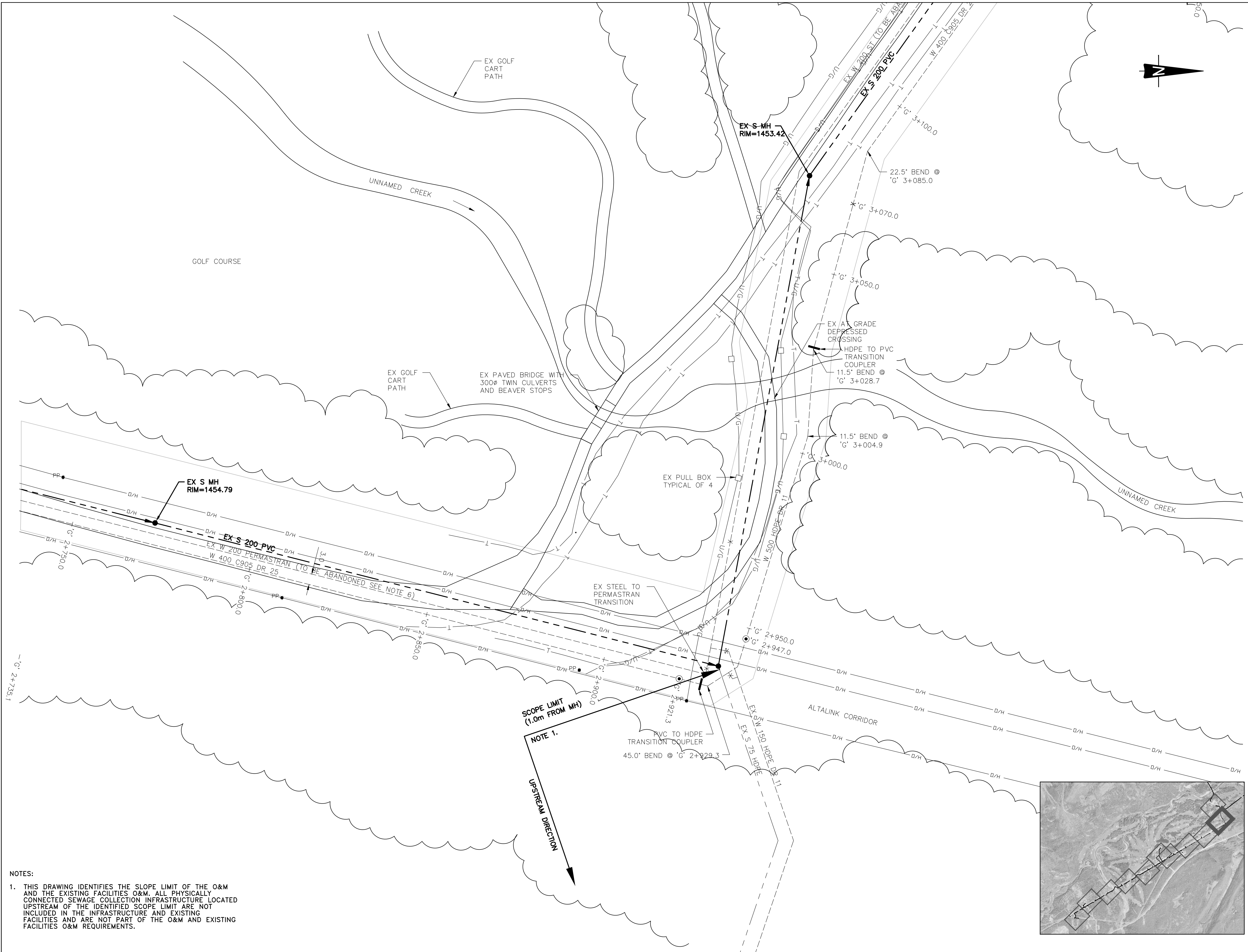
Government of Alberta
Infrastructure

PROJECT
Evan-Thomas Water and Wastewater
Treatment Facilities Upgrade Schedule 18
Contractor Infrastructure O&M Limits

DRAWINGS
SEWAGE COLLECTION
SCOPE LIMIT FROM
MOUNT KIDD R.V. PARK

BLDG #	DATE	SITE #	PROJECT FILE NO.	SERIES
SEAL		S0483		
	DATE	DRAWN BY		SHEET 1 of 3
	DATE	CHECKED BY		SCALE
				PLAN NO. 18-A-2.01





NOTES:
 1. THIS DRAWING IDENTIFIES THE SCOPE LIMIT OF THE O&M AND THE EXISTING FACILITIES O&M. ALL PHYSICALLY CONNECTED SEWAGE COLLECTION INFRASTRUCTURE LOCATED UPSTREAM OF THE IDENTIFIED SCOPE LIMIT ARE NOT INCLUDED IN THE INFRASTRUCTURE AND EXISTING FACILITIES AND ARE NOT PART OF THE O&M AND EXISTING FACILITIES O&M REQUIREMENTS.

REMARKS

1. ALL ELEVATIONS AND DIMENSIONS IN METRES AND PIPE SIZES IN MILLIMETRES UNLESS NOTED OTHERWISE.
2. THE PURPOSE OF THIS DRAWING IS TO IDENTIFY THE EXTENT OF THE O&M AND THE EXISTING FACILITIES O&M FOR THE SEWAGE COLLECTION INFRASTRUCTURE. ANY INFORMATION SHOWN ON THIS DRAWING, SUCH AS THE LOCATION OF ALL UNDERGROUND UTILITIES, INCLUDING BUT NOT LIMITED TO GAS, OIL, TELEPHONE, PIPELINES, ELECTRICAL HAS BEEN PREPARED IN GOOD FAITH, AND DOES NOT PURPORT TO BE ACCURATE, COMPREHENSIVE OR TO HAVE BEEN INDEPENDENTLY VERIFIED AND IS NOT TO BE RELIED UPON.

DATE	CODE	REVISIONS ITEMS	DRAWN BY	APPROVED BY

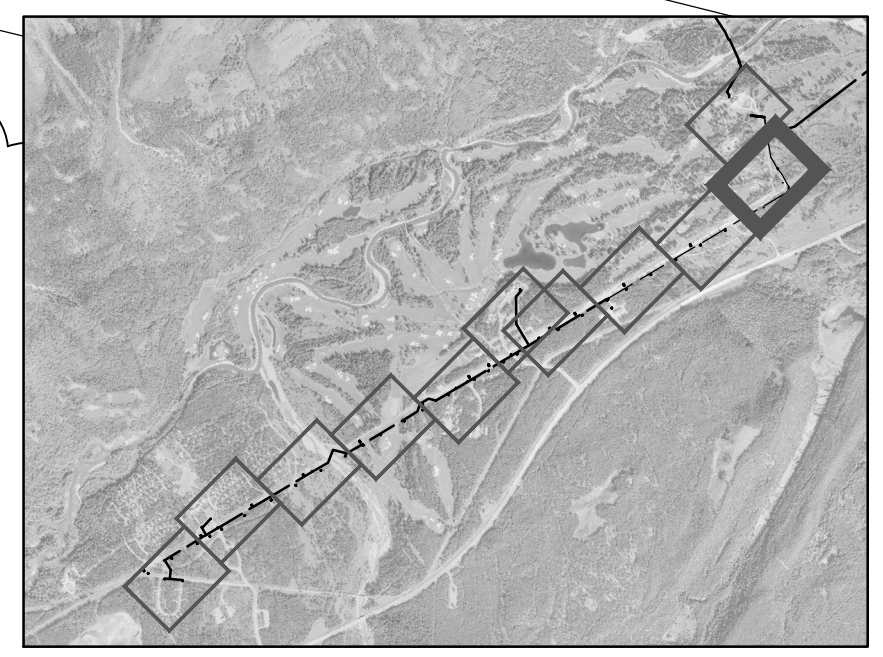
CONSULTANTS

Government of Alberta
 Infrastructure

PROJECT
 Evan-Thomas Water and Wastewater Treatment Facilities Upgrade Schedule 18 Contractor Infrastructure O&M Limits

DRAWINGS
 SEWAGE COLLECTION
 SCOPE LIMIT FROM BOUNDARY RANCH AND EMERGENCY SERVICES CENTRE

BLDG #	DATE	SITE #	PROJECT FILE NO.	SERIES
SEAL		S0483		
	DATE		DRAWN BY	SHEET
				2 of 3
	DATE		CHECKED BY	SCALE
				PLAN NO.
				18-A-2.02



SCALE 1:500
 PLAN NO. 18-A-2.02



NOTES:
 1. THIS DRAWING IDENTIFIES THE SLOPE LIMIT OF THE O&M AND THE EXISTING FACILITIES O&M. ALL PHYSICALLY CONNECTED SEWAGE COLLECTION INFRASTRUCTURE LOCATED UPSTREAM OF THE IDENTIFIED SCOPE LIMIT ARE NOT INCLUDED IN THE INFRASTRUCTURE AND EXISTING FACILITIES AND ARE NOT PART OF THE O&M AND EXISTING FACILITIES O&M REQUIREMENTS.

REMARKS

1. ALL ELEVATIONS AND DIMENSIONS IN METRES AND PIPE SIZES IN MILLIMETRES UNLESS NOTED OTHERWISE.
2. THE PURPOSE OF THIS DRAWING IS TO IDENTIFY THE EXTENT OF THE O&M AND THE EXISTING FACILITIES O&M FOR THE SEWAGE COLLECTION INFRASTRUCTURE. ANY INFORMATION SHOWN ON THIS DRAWING, SUCH AS THE LOCATION OF ALL UNDERGROUND UTILITIES, INCLUDING BUT NOT LIMITED TO GAS, OIL, TELEPHONE, PIPELINES, ELECTRICAL HAS BEEN PREPARED IN GOOD FAITH, AND DOES NOT PURPORT TO BE ACCURATE, COMPREHENSIVE OR TO HAVE BEEN INDEPENDENTLY VERIFIED AND IS NOT TO BE RELIED UPON.

DATE	CODE	REVISIONS ITEMS	DRAWN BY	APPROVED BY

CONSULTANTS

Government of Alberta
 Infrastructure

PROJECT
 Evan-Thomas Water and Wastewater Treatment Facilities Upgrade Schedule 18 Contractor Infrastructure O&M Limits

DRAWINGS
 SEWAGE COLLECTION SCOPE LIMIT FROM NAKISKA SKI HILL

BLDG #	SITE # S0483		
SEAL	DATE	PROJECT FILE NO.	SERIES
	DATE	DRAWN BY	SHEET 3 of 3
	DATE	CHECKED BY	SCALE
			PLAN NO. 18-A-2.03

