

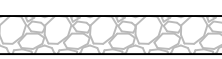

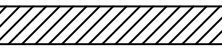
DESIGN, BUILD, FINANCE and OPERATE
EVAN-THOMAS WATER AND WASTEWATER TREATMENT FACILITY UPGRADE
KANANASKIS COUNTRY, ALBERTA, CANADA



SCHEDULE 7

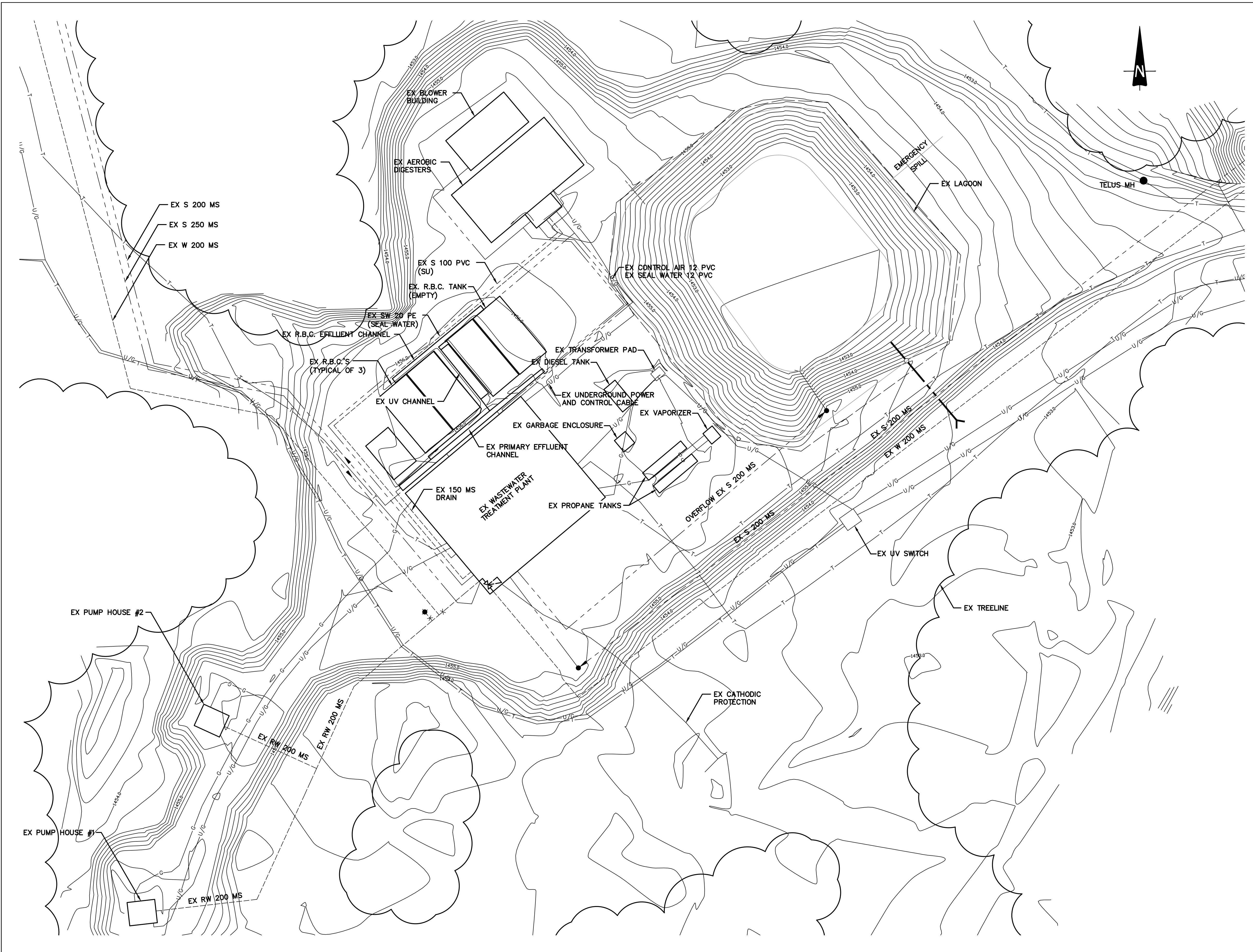
APPENDIX A - EXISTING FACILITIES

DRAWING INDEX		
7-A-1.01	1 of 3	COVER SHEET
7-A-1.02	2 of 3	DRAWING INDEX
7-A-1.03	3 of 3	LEGEND
7-A-2.01	1 of 3	WATER AND WASTEWATER TREATMENT PLANT
7-A-2.02	2 of 3	KANANASKIS RESERVOIR
7-A-2.03	3 of 3	BARRIER LAKE LAGOONS AND SLUDGE DRYING BEDS

LEGEND

	EXISTING
WATER MAIN	--- EX W 400 PVC ---
SANITARY MAIN & 5A MANHOLE	●--- EX S 200 PVC ---
STORM MAIN & 5A MANHOLE	●--- EX ST 200 PVC ---
SNOW-MAKING PIPING	--- s --- s ---
TELUS LINE & 5A MANHOLE	●--- T ---
SHAW CABLE	--- SHAW ---
GAS LINE	--- G ---
FIBRE OPTIC LINE	--- F/O ---
UNDERGROUND POWER LINE	--- U/G ---
OVERHEAD POWER LINE	--- O/H ---
FENCE	--- ---
EDGE OF ROAD	--- EOR ---
CURB & GUTTER	=====
GRAVEL ROAD SURFACE	
DIRT ROAD SURFACE	
SIDEWALK	

	EXISTING
SWALE	--->---
TREELINE	
CULVERT	>---<
WATER VALVE	--- X ---
FIRE HYDRANT & 150 LEAD	◆--- X ---
PLUG & REDUCER	E---<---
TRANSITION COUPLER	--- + ---
AIR RELEASE / AIR VACUUM MANHOLE AND VALVE	--- ⊗ ---
DRAIN MANHOLE AND VALVE	--- ⊙ ---
BUILDING	
LIGHT STANDARD & POWER POLE	L.S. ◆ PP ●
TEST HOLE	⊕ TH
TEST HOLE PIEZOMETER	⊕ ^{TH-PZ}
TEST PIT	⊕ ^{TP}



REMARKS

1. ALL ELEVATIONS AND DIMENSIONS IN METRES AND PIPE SIZES IN MILLIMETRES UNLESS NOTED OTHERWISE
2. THE PURPOSE OF THIS DRAWING IS TO IDENTIFY THE LOCATION OF THE Lands. ANY INFORMATION SHOWN ON THIS DRAWING, SUCH AS THE LOCATION OF ALL UNDERGROUND UTILITIES, INCLUDING BUT NOT LIMITED TO GAS, OIL, TELEPHONE, PIPELINES, ELECTRICAL HAS BEEN PREPARED IN GOOD FAITH, AND DOES NOT PURPORT TO BE ACCURATE, COMPREHENSIVE OR TO HAVE BEEN INDEPENDENTLY VERIFIED AND IS NOT TO BE RELIED UPON.

DATE	CODE	REVISIONS ITEMS	DRAWN BY	APPROVED BY

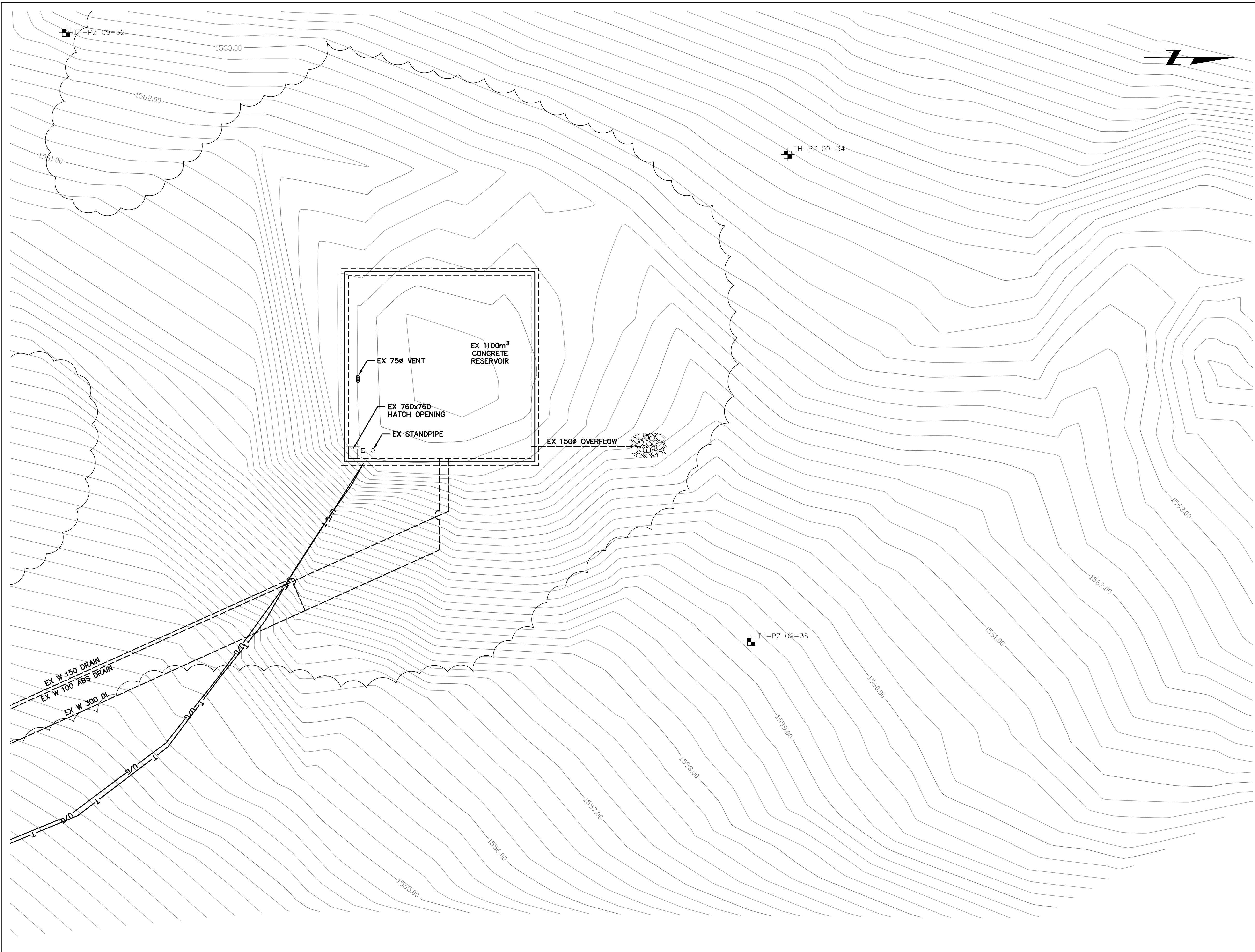
CONSULTANTS

Government of Alberta
Infrastructure

PROJECT
Evan-Thomas Water and Wastewater Treatment Facilities Upgrade - Schedule 7 Existing Facilities

DRAWINGS
WATER AND WASTEWATER TREATMENT PLANT

BLDG #	SITE # S0483		
	DATE	PROJECT FILE NO.	SERIES
SEAL	DATE	DRAWN BY	SHEET 1 OF 3
	DATE	CHECKED BY	SCALE
SCALE 1:250			PLAN NO. 7-A-2.01



REMARKS

1. ALL ELEVATIONS AND DIMENSIONS IN METRES AND PIPE SIZES IN MILLIMETRES UNLESS NOTED OTHERWISE
2. THE PURPOSE OF THIS DRAWING IS TO IDENTIFY THE LOCATION OF THE Lands. ANY INFORMATION SHOWN ON THIS DRAWING, SUCH AS THE LOCATION OF ALL UNDERGROUND UTILITIES, INCLUDING BUT NOT LIMITED TO GAS, OIL, TELEPHONE, PIPELINES, ELECTRICAL HAS BEEN PREPARED IN GOOD FAITH, AND DOES NOT PURPORT TO BE ACCURATE, COMPREHENSIVE OR TO HAVE BEEN INDEPENDENTLY VERIFIED AND IS NOT TO BE RELIED UPON.

DATE	CODE	REVISIONS ITEMS	DRAWN BY	APPROVED BY

CONSULTANTS

Government of Alberta
Infrastructure

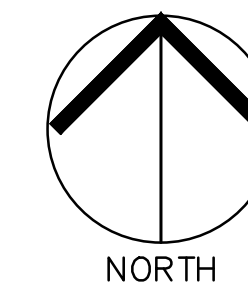
PROJECT
Evan-Thomas Water and Wastewater
Treatment Facilities Upgrade -
Schedule 7 Existing Facilities

DRAWINGS
KANANASKIS
RESERVIOR

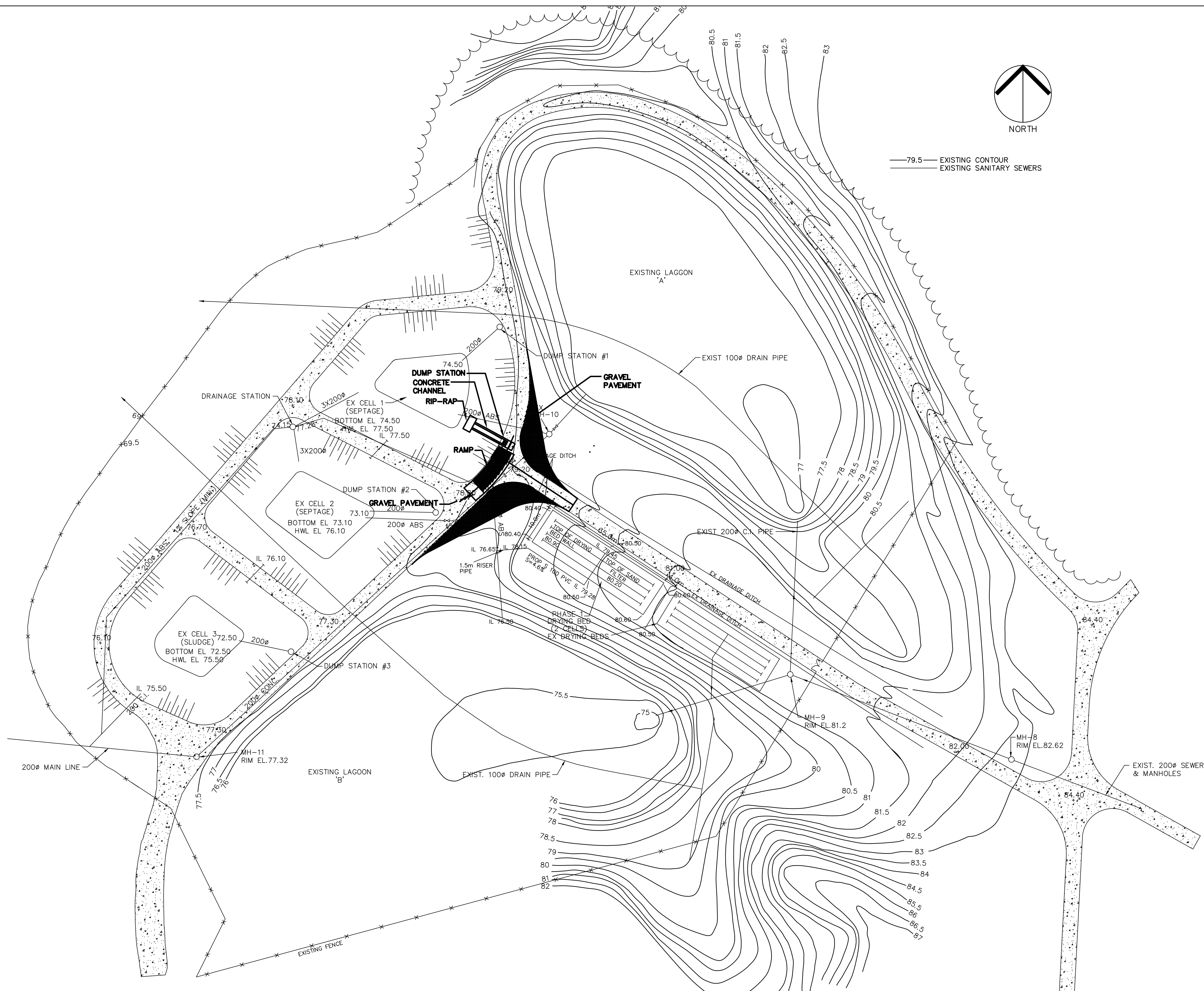
BLDG #	SITE #	SOM#3	
SEAL	DATE	PROJECT FILE NO.	SERIES
	DATE	DRAWN BY	SHEET 2 of 3
	DATE	CHECKED BY	SCALE
	SCALE 1:150		PLAN NO. 7-A-2.02

REMARKS

1. ALL ELEVATIONS AND DIMENSIONS IN METRES AND PIPE SIZES IN MILLIMETRES UNLESS NOTED OTHERWISE
2. THE PURPOSE OF THIS DRAWING IS TO IDENTIFY THE LOCATION OF THE Lands. ANY INFORMATION SHOWN ON THIS DRAWING, SUCH AS THE LOCATION OF ALL UNDERGROUND UTILITIES, INCLUDING BUT NOT LIMITED TO GAS, OIL, TELEPHONE, PIPELINES, ELECTRICAL HAS BEEN PREPARED IN GOOD FAITH, AND DOES NOT PURPORT TO BE ACCURATE, COMPREHENSIVE OR TO HAVE BEEN INDEPENDENTLY VERIFIED AND IS NOT TO BE RELIED UPON.



— 79.5 — EXISTING CONTOUR
 ——— EXISTING SANITARY SEWERS



DATE	CODE	REVISIONS		DRAWN BY	APPROVED BY
		ITEMS			

CONSULTANTS

Government of Alberta
 Infrastructure

PROJECT
 Evan-Thomas Water and Wastewater Treatment Facilities Upgrade - Schedule 7 Existing Facilities

DRAWINGS
 BARRIER LAKE LAGOONS AND SLUDGE DRYING BEDS

BLDG #	SITE # S0483		
	DATE	PROJECT FILE NO.	SERIES
SEAL	DATE	DRAWN BY	SHEET 3 of 3
	DATE	CHECKED BY	SCALE
	SCALE 1:500		PLAN NO. 7-A-2.03