

Supplemental Information  
2010-11 APS Profile

**Profile of the Alberta Public Service**

As of March 31, 2011 there were 25,834 employees in the Alberta Public Service, a decrease over March 31, 2010 when there were 26,391 employees.

Salaried staff includes permanent, temporary and long-term wage employees.

Ministry	Employee Count	Percentage of Public Service
Aboriginal Relations	101	0.39%
Advanced Education & Technology	609	2.36%
Agriculture and Rural Development	966	3.74%
Chief Electoral Office	20	0.08%
Children and Youth Services	3,097	11.99%
Corporate Human Resources	128	0.50%
Culture and Community Spirit	513	1.99%
Education	675	2.61%
Employment and Immigration	2,208	8.55%
Energy	731	2.83%
Environment	984	3.81%
Executive Council	50	0.19%
Finance and Enterprise	547	2.12%
Health and Wellness	795	3.08%
Housing and Urban Affairs	165	0.64%
Infrastructure	869	3.36%
International and Intergovernmental Relations	144	0.56%
Justice and Attorney General	3,014	11.67%
Legislative Assembly Office	99	0.38%
Municipal Affairs	405	1.57%
Office of the Auditor General	141	0.55%
Office of the Ethics Commissioner	4	0.02%
Office of the Information and Privacy Commissioner	38	0.15%
Ombudsman	21	0.08%
Public Affairs Bureau	165	0.64%
Seniors and Community Supports	1,856	7.18%
Service Alberta	1,373	5.31%
Solicitor General	2,895	11.21%
Sustainable Resource Development	1,746	6.76%
Tourism, Parks and Recreation	476	1.84%
Transportation	866	3.35%
Treasury Board	133	0.51%
<b>Total</b>	<b>25,834</b>	<b>100%</b>

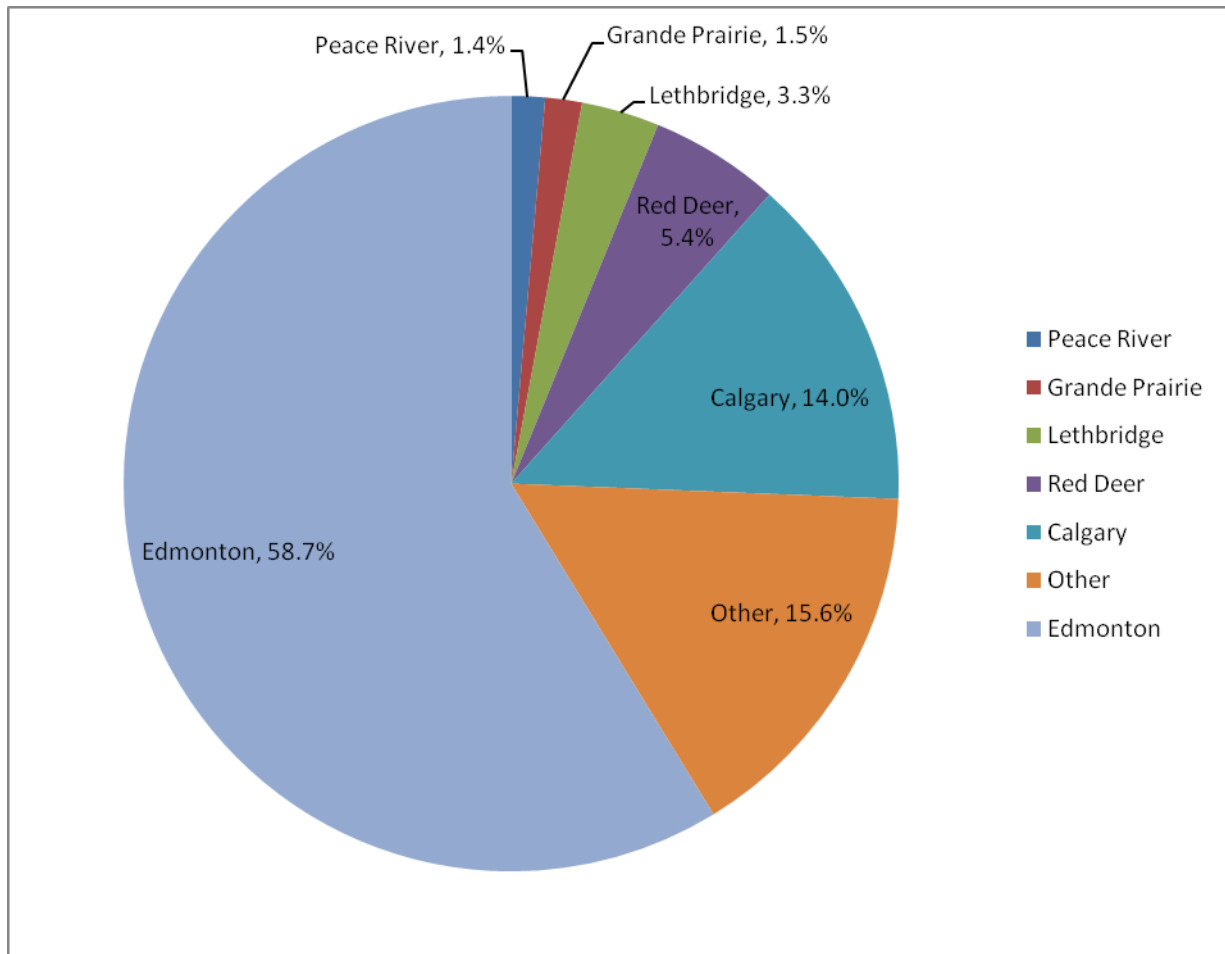
\* Sources: IMAGIS database as of March 31, 2011, Legislative Assembly Office, Office of the Ethics Commissioner, Office of the Information and Privacy Commissioner.

Supplemental Information  
2010-11 APS Profile

Employee Distribution  
(location, age, and salary)

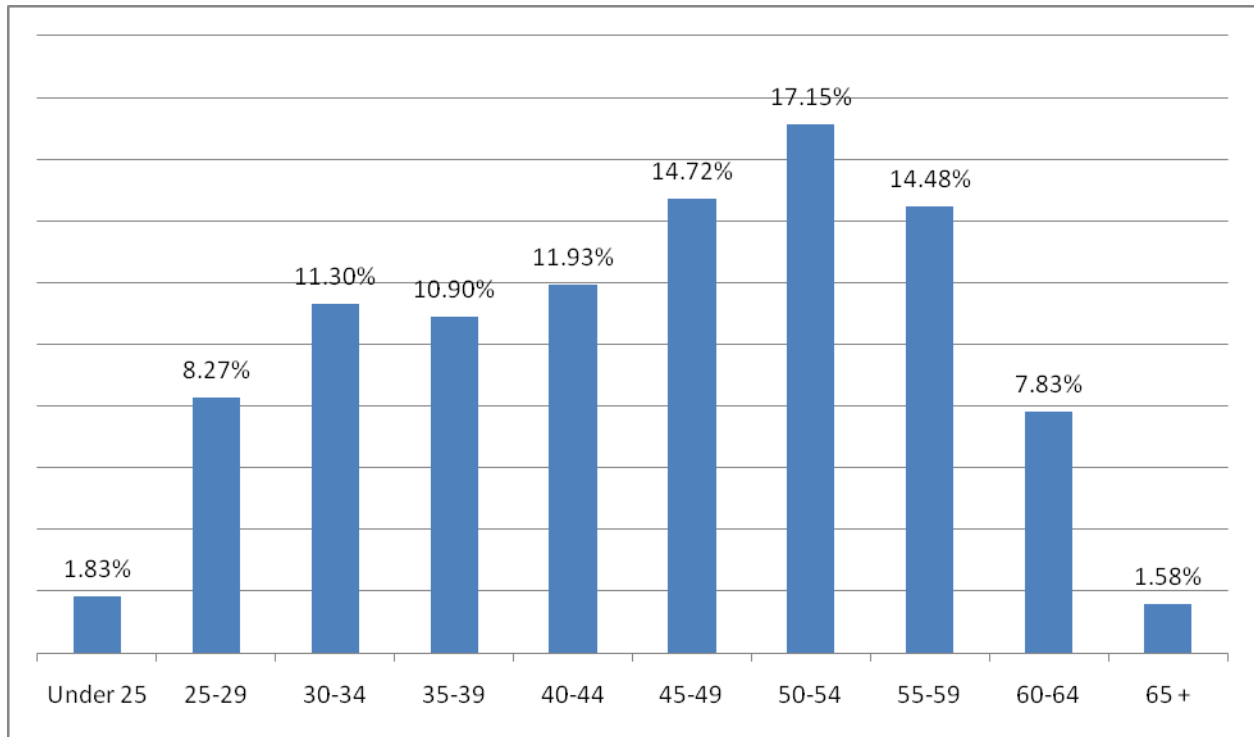
\* Salaried Staff includes permanent, temporary, and long term wage employees. Information pulled from IMAGIS does not include Legislative Assembly, Office of the Ethics Commissioner, Office of the Information and Privacy Commissioner.

Work Location



Supplemental Information  
2010-11 APS Profile

Average Employee Age 2010-11 (45.82)



Average Employee Salary 2010-11 (\$70,874.16)

