

Supplemental Information

2012-13 Alberta Public Service Profile

Profile of the Alberta Public Service

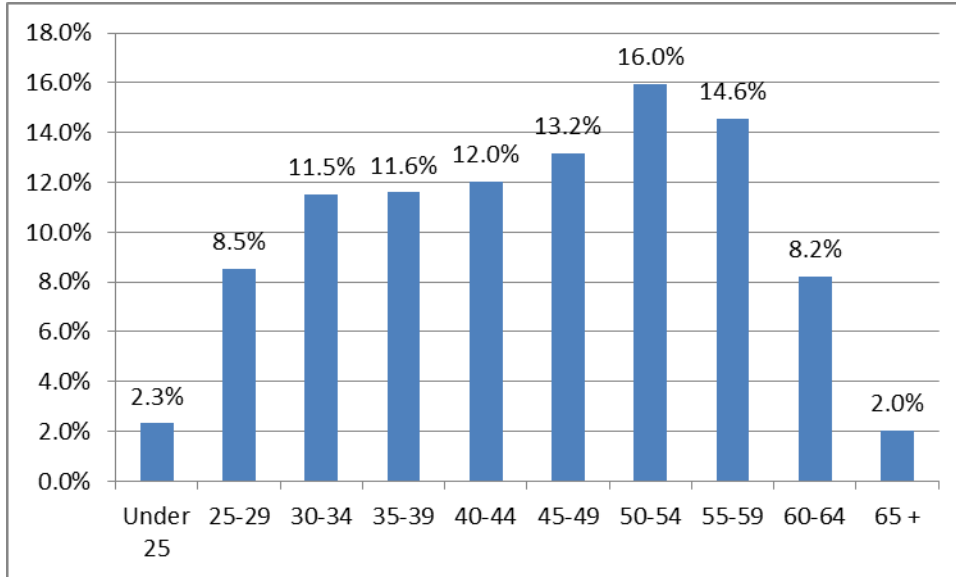
As of March 31, 2013 there were 26,947 employees in the Alberta Public Service, an increase over March 31, 2012 when there were 26,217 employees.

Ministry	Employee Count	Percentage of Public Service
Aboriginal Relations	97	0.36%
Agriculture and Rural Development	976	3.62%
Corporate Human Resources	134	0.50%
Culture	485	1.80%
Education	687	2.55%
Energy	775	2.88%
Enterprise and Advanced Education	906	3.36%
Environment and Sustainable Resource Development	2,421	8.98%
Executive Council	69	0.26%
Health	1,144	4.25%
Human Services	7,217	26.79%
Infrastructure	935	3.47%
International and Intergovernmental Relations	161	0.60%
Justice and Solicitor General	6,672	24.76%
Legislative Assembly Office	111	0.41%
Municipal Affairs	534	1.98%
Office of the Auditor General	157	0.58%
Office of the Chief Electoral Officer	18	0.07%
Office of the Child and Youth Advocate	51	0.19%
Office of the Ethics Commissioner	3	0.01%
Office of the Information and Privacy Commissioner	37	0.14%
Office of the Ombudsman	20	0.07%
Public Affairs Bureau	163	0.60%
Service Alberta	1,453	5.39%
Tourism, Parks & Recreation	415	1.54%
Transportation	723	2.68%
Treasury Board & Finance	583	2.16%
Total	26,947	100.00%

Employee Distribution

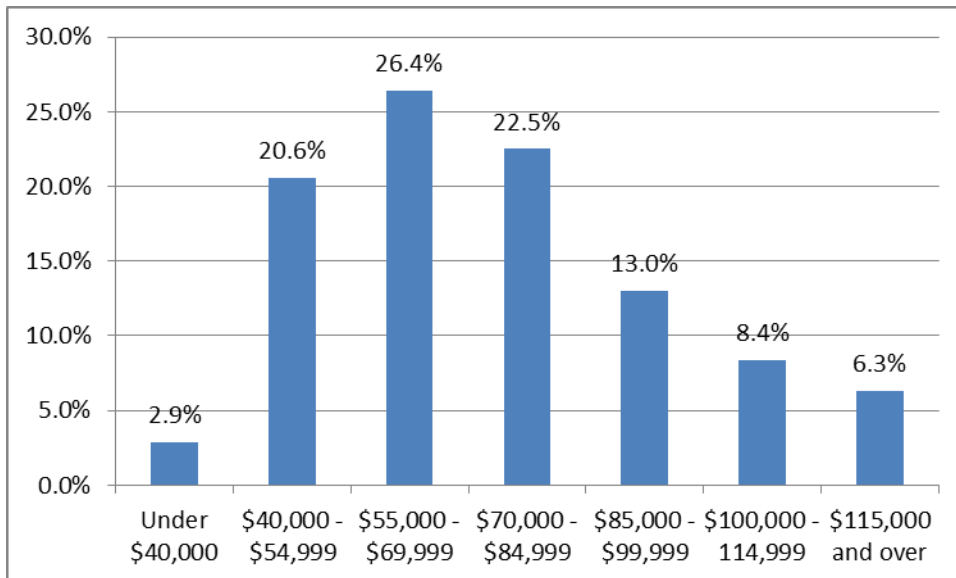
Age Distribution

Average employee age: 45.7

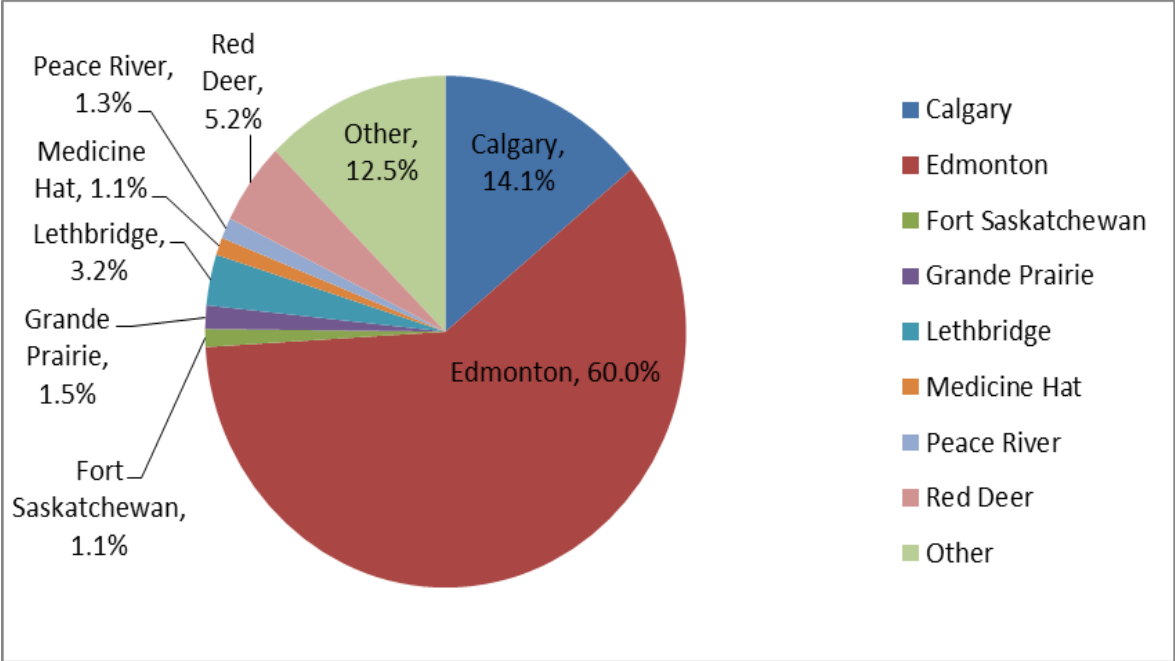


Salary Distribution

Average employee salary: \$74,662.89



Work Location



Source and Methodology

Methodology:
Employee count includes permanent salaried, temporary salaried, contract, and long-term wage employees and does not include senior officials.

Source:
Profile of the APS: IMAGIS database and Legislative Assembly Office as of March 31, 2013.
Employee Distribution: IMAGIS database as of March 31, 2013.