

Supplemental Information

2011-12 Alberta Public Service Profile

Profile of the Alberta Public Service

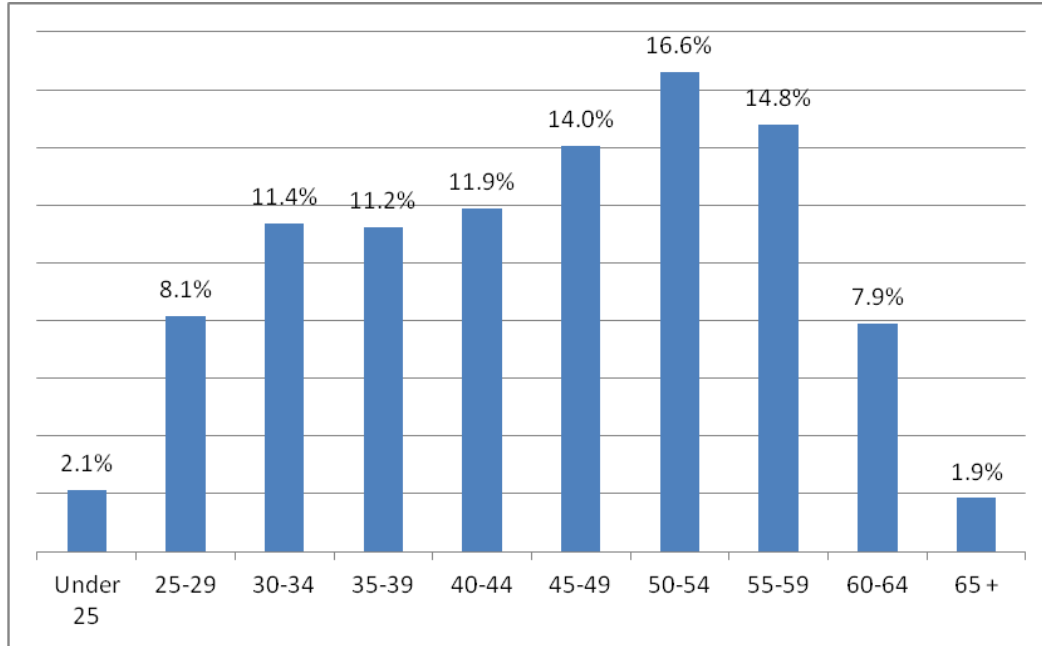
As of March 31, 2012 there were 26,217 employees in the Alberta Public Service, an increase over March 31, 2011 when there were 25,834 employees.

Ministry	Employee Count	Percentage of Public Service
Advanced Education and Technology	622	2.37%
Agriculture and Rural Development	979	3.73%
Corporate Human Resources	129	0.49%
Culture and Community Services	459	1.75%
Education	675	2.57%
Energy	721	2.75%
Environment and Water	1,001	3.82%
Executive Council	62	0.24%
Finance	445	1.70%
Health and Wellness	856	3.27%
Human Services	5,452	20.80%
Infrastructure	936	3.57%
Intergovernmental, International and Aboriginal Relations	247	0.94%
Justice and Attorney General	3,115	11.88%
Legislative Assembly Office	109	0.42%
Municipal Affairs	489	1.87%
Office of the Auditor General	148	0.56%
Office of the Chief Electoral Officer	19	0.07%
Office of the Ethics Commissioner	3	0.01%
Office of the Information and Privacy Commissioner	38	0.14%
Office of the Ombudsman	18	0.07%
Public Affairs Bureau	156	0.60%
Seniors	1,805	6.88%
Service Alberta	1,415	5.40%
Solicitor General and Public Security	3,432	13.09%
Sustainable Resource Development	1,490	5.68%
Tourism, Parks and Recreation	474	1.81%
Transportation	713	2.72%
Treasury Board and Enterprise	209	0.80%
Total	26,217	100.00%

Employee Distribution

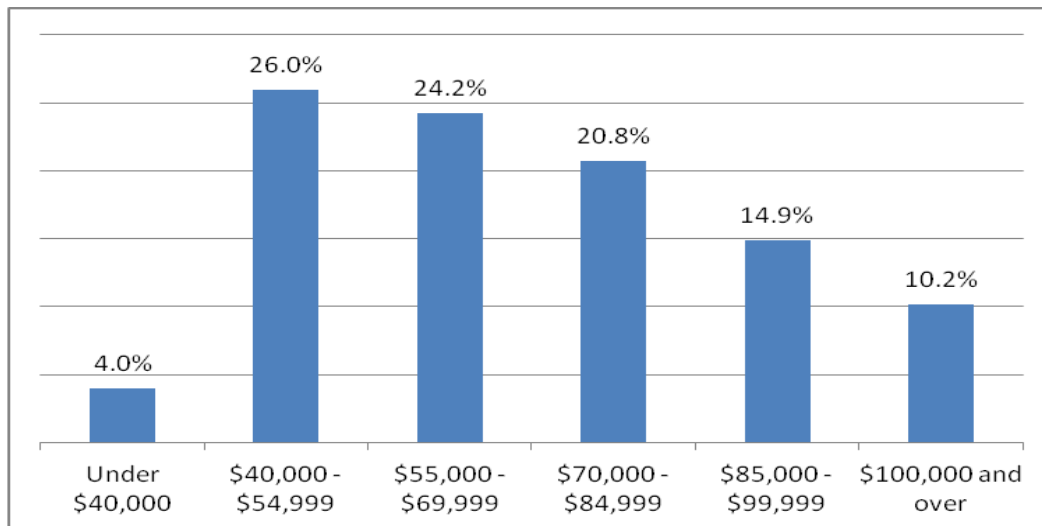
Age Distribution

Average employee age: 45.8

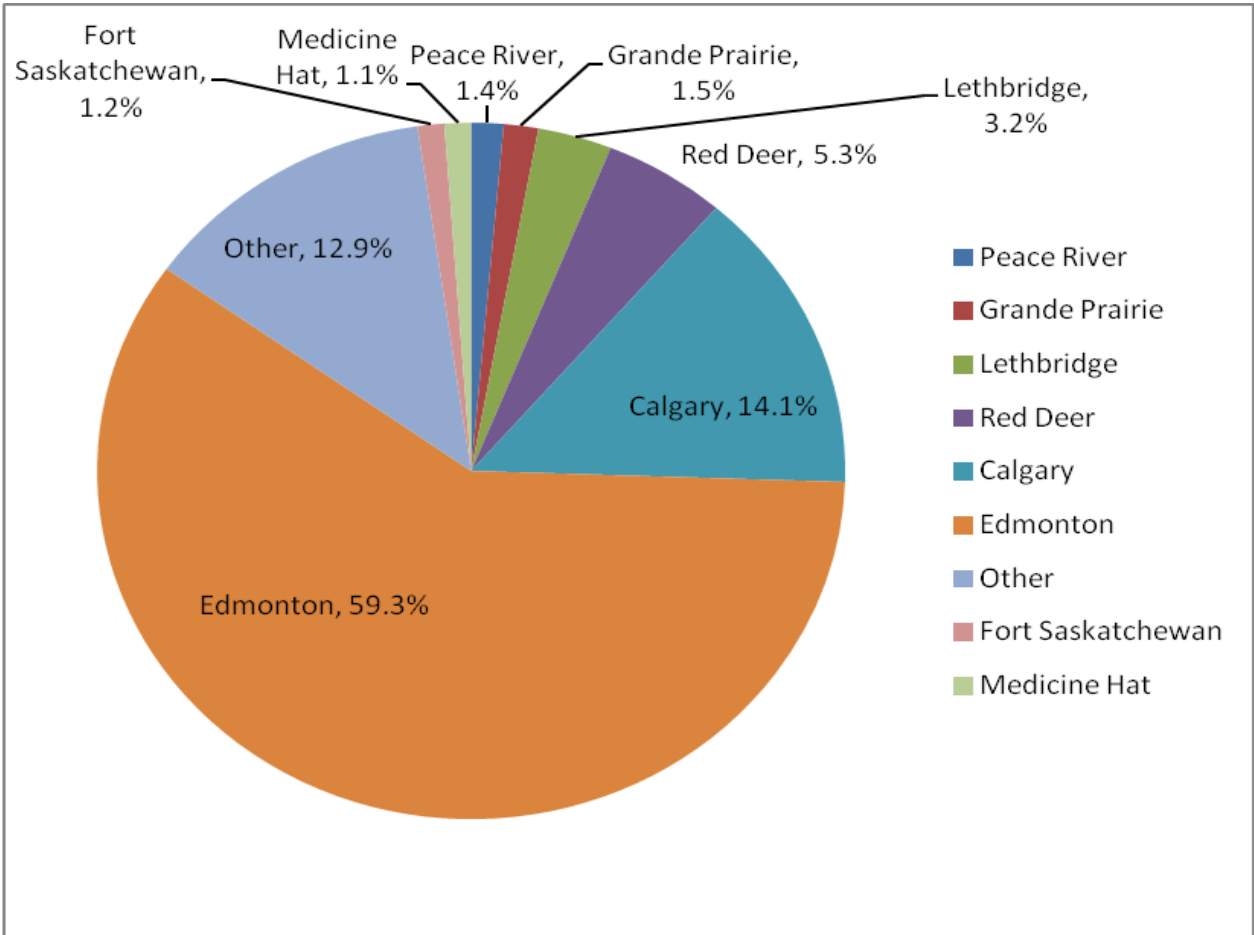


Salary Distribution

Average employee salary: \$71,491.09



Work Location



Source and Methodology

Methodology:

Employee count includes permanent salaried, temporary salaried, contract, and long-term wage employees and does not include senior officials.

Source:

Profile of the APS: IMAGIS database and Legislative Assembly Office as of March 31, 2012.

Employee Distribution: IMAGIS database as of March 31, 2012.