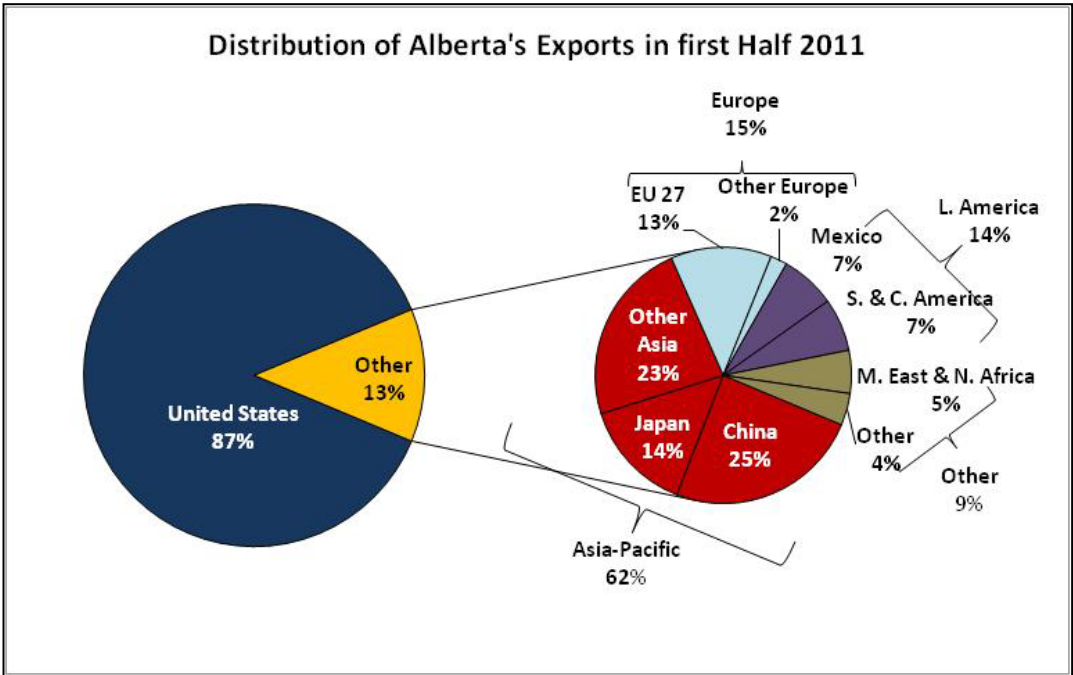


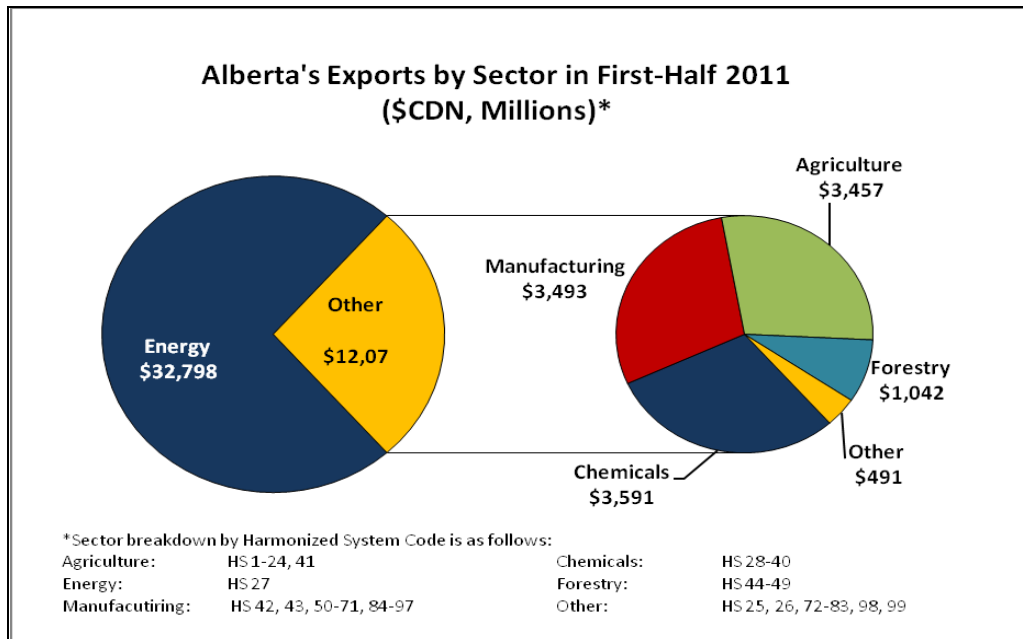
Alberta's Top 20 Export Destinations in First Half 2011 (\$CDN, Millions)						
Rank	Country	2011		2010		2010-2011 % Change
		Value	% Share	Value	% Share	
1	United States	\$ 39,219.9	87.4%	\$ 34,118.3	87.1%	15.0%
2	China	\$ 1,391.5	3.1%	\$ 1,408.6	3.6%	-1.2%
3	Japan	\$ 804.8	1.8%	\$ 675.7	1.7%	19.1%
	EU 27	\$ 718.8	1.6%	\$ 553.2	1.4%	29.9%
4	Mexico	\$ 393.6	0.9%	\$ 347.1	0.9%	13.4%
5	Korea, South	\$ 370.1	0.8%	\$ 271.8	0.7%	36.2%
6	Australia	\$ 167.1	0.4%	\$ 136.6	0.4%	22.3%
7	United Arab Emirates	\$ 122.0	0.3%	\$ 86.7	0.2%	40.8%
8	Russia	\$ 114.5	0.3%	\$ 105.5	0.3%	8.5%
9	Indonesia	\$ 107.4	0.2%	\$ 67.3	0.2%	59.6%
10	Taiwan	\$ 100.6	0.2%	\$ 96.8	0.3%	3.9%
11	Hong Kong	\$ 72.7	0.2%	\$ 71.9	0.2%	1.0%
12	Bangladesh	\$ 68.4	0.2%	\$ 70.8	0.2%	-3.4%
13	Pakistan	\$ 66.1	0.2%	\$ 40.0	0.1%	65.2%
14	Singapore	\$ 65.6	0.2%	\$ 78.7	0.2%	-16.6%
15	India	\$ 59.5	0.1%	\$ 35.7	0.1%	66.6%
16	Colombia	\$ 58.2	0.1%	\$ 49.4	0.1%	17.7%
17	Cuba	\$ 58.0	0.1%	\$ 26.7	0.1%	117.3%
18	Brazil	\$ 55.8	0.1%	\$ 47.5	0.1%	17.4%
19	Chile	\$ 55.5	0.1%	\$ 44.1	0.1%	26.0%
20	Thailand	\$ 54.3	0.1%	\$ 33.8	0.1%	60.6%
Total Above		\$ 43,405.6	96.7%	\$ 37,813.1	96.5%	14.8%
Total Other		\$ 1,466.8	3.3%	\$ 1,373.5	3.5%	6.8%
Total Exports from Alberta		\$ 44,872.4	100.0%	\$ 39,186.6	100.0%	14.5%

Source: World Trade Atlas, September 1, 2011. Excludes re-exports.



Alberta's Exports by Sector in First Half 2011 (\$CDN, Millions)					
Sector	2011		2010		2010-2011 % Change
	Value	% Share	Value	% Share	
Energy	\$ 32,797.9	73.1%	\$ 28,271.4	72.1%	16.0%
Chemicals	\$ 3,591.2	8.0%	\$ 3,206.3	8.2%	12.0%
Manufacturing	\$ 3,493.0	7.8%	\$ 2,873.4	7.3%	21.6%
Agriculture	\$ 3,457.2	7.7%	\$ 3,306.3	8.4%	4.6%
Forestry	\$ 1,042.4	2.3%	\$ 1,102.7	2.8%	-5.5%
Other	\$ 490.8	1.1%	\$ 426.5	1.1%	15.1%
Total	\$ 44,872.4		\$ 39,186.6		14.5%

Source: World Trade Atlas, September 1, 2011. Excludes re-exports.

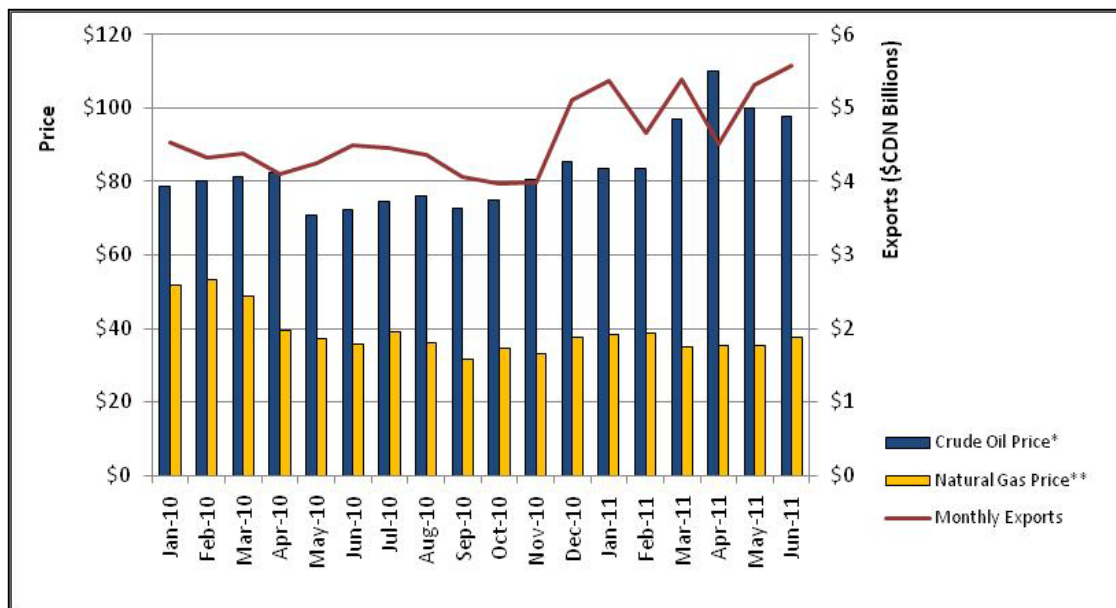


Alberta's Exports by Category in First Half 2011 (\$CDN, Millions)							
Rank	HS	Description	2011		2010		2010-2011 % Change
			Value	% Share	Value	% Share	
1	27	Energy	\$ 32,797.9	73.1%	\$ 28,271.4	72.1%	16.0%
2	84	Machinery	\$ 1,809.2	4.0%	\$ 1,328.5	3.4%	36.2%
3	39	Plastic	\$ 1,715.2	3.8%	\$ 1,512.5	3.9%	13.4%
4	29	Organic Chemicals	\$ 1,127.2	2.5%	\$ 1,047.4	2.7%	7.6%
5	10	Cereals	\$ 866.3	1.9%	\$ 757.4	1.9%	14.4%
6	47	Woodpulp	\$ 693.1	1.5%	\$ 673.7	1.7%	2.9%
7	02	Meat	\$ 674.9	1.5%	\$ 772.4	2.0%	-12.6%
8	12	Canola Seed	\$ 642.1	1.4%	\$ 518.8	1.3%	23.8%
9	75	Nickel	\$ 460.0	1.0%	\$ 370.6	0.9%	24.1%
10	15	Fats And Oils	\$ 374.8	0.8%	\$ 344.6	0.9%	8.8%
Total Above			\$ 41,160.8	91.7%	\$ 35,597.2	90.8%	15.6%
Other Exports			\$ 3,711.6	8.3%	\$ 3,589.4	9.2%	3.4%
Total Exports			\$ 44,872.4		\$ 39,186.6		14.5%

Source: World Trade Atlas, September 1, 2011. Excludes re-exports.

Alberta's Exports by Product in First Half 2011 (\$CDN, Millions)							
Rank	HS	Description	2011		2010		2010-2011 % Change
			Value	% Share	Value	% Share	
1	270900	Crude Oil	\$ 24,583.1	54.8%	\$ 19,018.1	48.5%	29.3%
2	271121	Natural Gas	\$ 6,232.3	13.9%	\$ 7,078.0	18.1%	-11.9%
3	390190	Ethylene Polymers	\$ 981.0	2.2%	\$ 888.9	2.3%	10.4%
4	100190	Wheat	\$ 757.7	1.7%	\$ 661.8	1.7%	14.5%
5	290531	Ethylene Glycol	\$ 663.0	1.5%	\$ 590.1	1.5%	12.3%
6	271112	Liquefied Propane	\$ 631.3	1.4%	\$ 636.8	1.6%	-0.9%
7	120510	Canola Seed	\$ 580.8	1.3%	\$ 455.6	1.2%	27.5%
8	750210	Unw rought Nickel	\$ 410.9	0.9%	\$ 325.3	0.8%	26.3%
9	270112	Bituminous Coal	\$ 398.8	0.9%	\$ 322.1	0.8%	23.8%
10	271019	Refined Oil	\$ 377.3	0.8%	\$ 650.1	1.7%	-42.0%
11	470321	Woodpulp, Coniferous	\$ 350.4	0.8%	\$ 301.7	0.8%	16.1%
12	390120	Polyethylene s.g. > 0.94	\$ 340.1	0.8%	\$ 282.0	0.7%	20.6%
13	020130	Beef, Boneless	\$ 306.9	0.7%	\$ 397.8	1.0%	-22.9%
14	250300	Sulphur	\$ 292.4	0.7%	\$ 224.9	0.6%	30.0%
15	843143	Boring/Sinking Machinery Parts	\$ 288.9	0.6%	\$ 223.9	0.6%	29.0%
16	310210	Urea	\$ 283.5	0.6%	\$ 250.6	0.6%	13.1%
17	151411	Canola Oil	\$ 267.7	0.6%	\$ 266.1	0.7%	0.6%
18	010290	Live Cattle	\$ 247.7	0.6%	\$ 296.3	0.8%	-16.4%
19	281410	Anhydrous Ammonia	\$ 242.1	0.5%	\$ 161.6	0.4%	49.8%
20	470329	Wood Pulp Non-Coniferous	\$ 229.2	0.5%	\$ 266.4	0.7%	-14.0%
Total Above			\$ 38,465.1	85.7%	\$ 33,298.0	85.0%	15.5%
Other Exports			\$ 6,407.3	14.3%	\$ 5,888.6	15.0%	8.8%
Total Exports			\$ 44,872.4		\$ 39,186.6		14.5%

Source: World Trade Atlas, September 1, 2011. Excludes re-exports.



*Oil Price: Canadian dollars per barrel of Canada Par at Edmonton

**Natural Gas Price: Canadian dollars per ten million British Thermal Units, AECO-C

Source: Canadian Association of Petroleum Producers and World Trade Atlas, September 1, 2011.
Excludes re-exports.