

Livingstone Public Land Use Zone



Livingstone PLUZ Summer Access

Livingstone Public Land Use Zone (PLUZ) covers an area of 1,398 km² and includes the headwaters of the Oldman River. Be aware cellular service is unavailable throughout most of the Livingstone PLUZ.

PLUZs are managed to protect the environment while allowing responsible and sustainable use of the land. In addition to recreation this multiple use area includes forestry, agriculture, and oil and gas activities. Regulations within a PLUZ determine where recreational activities can occur and under what conditions. It is your responsibility to become familiar with activities allowed in this area. Refer to the map and charts in this pamphlet for further details.

Livingstone PLUZ is also part of the Rocky Mountain Forest Reserve. Active timber harvest occurs throughout the year. Many roads throughout the Livingstone PLUZ may be used for log hauling with signs posted accordingly. Remain aware of your surroundings and use caution when traveling, specifically in areas where active timber harvest is occurring. Please avoid active logging areas.

Motorized Recreation

In a Public Land Use Zone off-highway vehicles (OHV) are only permitted on designated trails or designated areas:

- specific trails are designated for
- specific vehicle type
- some seasonal closures apply
- highway licensed vehicles are permitted on designated trails



Camp Responsibly

- Random camping refers to camping outside designated campgrounds. This type of camping is user maintained and unserviced. Please plan accordingly.
- Do not camp where you will block or restrict trail access.
- Choose areas that minimize damage to vegetation.
- Use existing fire pits when possible.
- Do not remove artifacts.
- Remove all garbage for disposal at home or at an approved garbage disposal facility.

Willow Creek Camping Nodes

The Willow Creek camping nodes are found just inside the northeast corner of the Livingstone PLUZ along secondary 532. Random unserviced camping is only allowed in the designated nodes in this area of the PLUZ. Signs are posted for Willow Creek east and west camping nodes.

Agricultural Public Land, and Private Land

If you wish to access agricultural public land, you must first contact the leaseholder and provide information about your visit. Although leaseholders must allow reasonable access to the land for recreation, there are some circumstances where the leaseholder may deny or apply conditions to access. For detailed information on access to agricultural public land in Alberta, visit alberta.ca/accessing-agricultural-lease-land.aspx.

If you wish to access privately owned land, you must first contact the landowner, or the landowner's designated contact person, for permission. In contrast to the holder of an agricultural or grazing lease, a landowner may deny you access for any reason.

My Wild Alberta

Hunting, angling, and trapping occur in the Livingstone PLUZ. Always consult the current guides to Hunting and Fishing Regulations, and the Public Land Use Zone motorized access rules before heading out onto public lands. You can find more information about hunting, fishing, and trapping on the "My Wild Alberta" website at mywildalberta.ca

Westslope Cutthroat Trout

Alberta's westslope cutthroat is listed as threatened under the provincial *Wildlife Act* and the federal *Species at Risk Act*. Numbers are declining from degradation or destruction of habitats, caused in large part by human activities, hybridization with non-native trout species or overharvest by angling. You have a vital role to play in the recovery of this species!

Some rivers and streams in the Livingstone PLUZ are critical habitat for the westslope cutthroat trout. While visiting this PLUZ, please keep your "wheels out of the water" to reduce impacts to water quality and the spawning habitat vital to the recovery of this species.



For More Information

Contact the nearest AEP office or visit alberta.ca

Blairmore
403-562-3210 (dial 310-0000 toll-free)

Fire Ban Information
1-866-FYI-FIRE (394-3473)

Report Land Abuse
1-800-642-3800 to report suspicious hunting and fishing activity, dangerous wildlife encounters and serious public lands abuse

Emergency

In case of emergency, please dial 911
To report a wildfire call 310-FIRE (310-3473)
Environment 24-hour pollution response team
1-800-222-6514

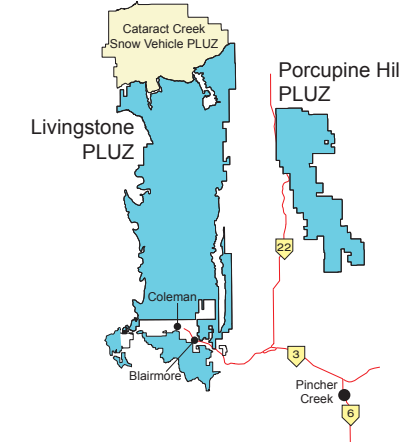


Photo Credit - Jeep Image: Villiers Van Der Merwe
Revised April 2021



Public Land Use Zone Rules - Know the Law!

General

- You shall comply with the lawful orders, instructions and directions of an Officer.
- You shall comply with the instructions, prohibitions, and directions contained in signs and notices posted by or at the request of an Officer on or about the public land use zones (PLUZ), public land recreation areas (PLRA) or public land recreation trails (PLRT).
- No cutting, removing or damaging living trees or any vegetation is allowed.
- Do not deposit harmful materials such as sediment, pollution, gray water or sewage into any water or onto ice of any watercourse or water body.
- Adhere to fire bans and closures.

Motorized vehicles

- Off-highway vehicles are not allowed on roads.
- Crossing a waterbody anywhere other than a bridge or designated ford is not permitted.
- Motorized users must stay on designated trails.
- Operators under 14 years of age must be supervised by an adult.

Camping

- Limit your stay to 14 days.
- Camping facilities must be temporary and portable.
- Camp at least 100m (330 ft) away from an oil and gas well site or facility.

- Do not camp on a pipeline.
- Campfires are allowed for cooking and warming purposes only.
- Campfires must be attended at all time and extinguished before leaving your site.
- Camp at least 30 m (100 ft.) from a water body.
- No camping or open fires allowed within one kilometre of a PRA or PLRA.

Traffic Safety Act

Under the *Traffic Safety Act* an off-highway vehicle (OHV) is any motorized mode of transportation built for cross-country travel on land, water, snow, ice or marsh or swamp land or on other natural terrain. CSA compliant helmets must be worn by OHV users when riding on public land.

Every OHV and snow vehicle operating on public land must have the following:

- Valid registration and insurance. Operator must carry and produce documents.
- Current license plate properly affixed in a visible location.
- Red rear tail lamp capable of emitting a light visible from at least 60 m (185 ft.).
- At least one front white headlamp capable of illuminating a person, vehicle or object from at least 60 m (185 ft.).
- Proper exhaust muffler with spark arrestor.

To operate an OHV on Alberta public lands, people from another jurisdiction must:

- Carry proof of residency.
- Follow the rules regarding registration of the vehicle and the display of license plate as required by their home jurisdiction.
- Produce valid proof of insurance.
- If you have been in Alberta for more than 30 days, all Alberta requirements apply.



Ride Responsibly

- Slow down. Adjust your speed of travel according to trail conditions.
- Motorized users yield to non-motorized users.
- Pull over to the side, turn off your engine and remove your helmet when horses are approaching.
- Ride when trails are dry. Avoid riding after heavy rainfall or snowmelt.
- If you encounter a locked gate, do not proceed beyond it.
- Leave all gates and fences as you find them.
- Travel is permitted beyond cattle guards and wire gates on the designated trail system.
- Reduce the spread of invasive species by washing your vehicle and equipment before entering the PLUZ.

Wheels out of Water

- Wheeled or tracked vehicles are not allowed on beds or shores of watercourses, wetlands or waterbodies.
- Use designated crossings. Crossing the stream anywhere other than a bridge or designated ford is considered off the designated trail.
- Do not wash your vehicle in a watercourse, wetland or waterbody.

Know Before You Go

It is your responsibility to ensure you are adequately informed of closures, appropriate usages and rules within the PLUZ. Visitors who do not follow the rules may be fined or charged under the provincial legislation.

To learn more about PLUZs, including trail updates, visit aep.alberta.ca.

Additional web resources:

Alberta Wildfire – wildfire.alberta.ca
Alberta Parks - albertaparks.ca
Parks Canada - pc.gc.ca
Vacation Guide - travelalberta.com

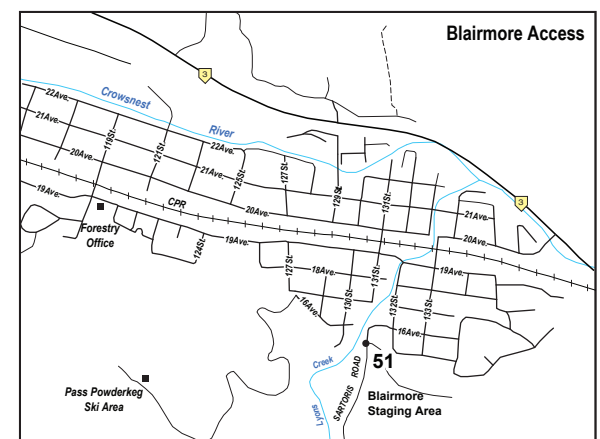
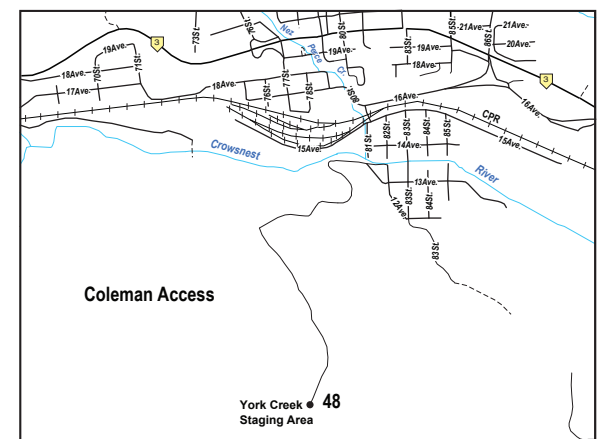


Avoiding Wildlife Conflicts

Always be aware of your surroundings and keep a respectful distance from wildlife. PLUZs are home to many animals, including grizzly and black bears, cougars, coyotes and wolves. Please take precautions to reduce the likelihood of a dangerous wildlife encounter.

- Set up campsites in open areas away from game trails, berry bushes, clover patches, streams and lakeshores.
- Constantly make noise to warn wildlife of your approach.
- Carry bear spray and know how to use it.
- Use odor-proof containers to store anything that may attract a bear, including food, toiletries and pet food and never take these items into your sleeping area. Store in your vehicle or high in a tree, at least 100 m (330 ft.) from your camp.
- Cook food and dispose of dishwater at least 100 m (330 ft.) from your sleeping area.
- Never partially burn or bury food scraps.
- Never feed, approach or disturb any wildlife.
- Stay in groups. Keep children close.
- Look for signs of recent wildlife activity including scat, prints, tree markings and wildlife carcasses. If there are signs of recent wildlife activity, leave the area immediately.

Getting There



This brochure is classified as a notice under the Public Lands Administration Regulation.

The official statutes and regulations should be consulted for all purposes of interpreting and applying the law. Clarification of the regulations may be obtained from your nearest Alberta Environment and Parks office.

Provincial statutes and regulations, in print or electronic format, are available through Alberta Queen's Printer: 780-427-4952 or visit qp.alberta.ca.



2021 Livingstone Public Land Use Zone

Summer Motorized
Effective May 1 - November 30, 2021
Map Legend

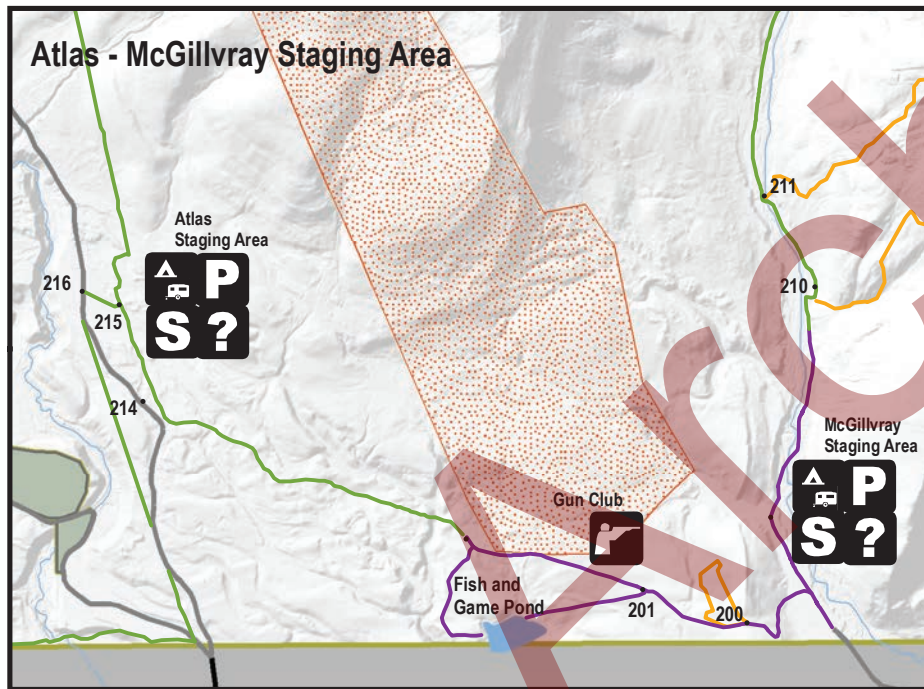
Designated Trails and Roads

Vehicle Description	Trail Sign	Map Symbol	Explanation	What Type of Motorized Vehicle Am I Driving?			
				4 x 4	Side by Side	Quad	Motorcycle
Trail Classification Motorized vehicles with an overall width up to and including 2.4m (98") in width.	[Symbol]	[Symbol]	Open May 1 - Nov 30	✓	✓	✓	✓
			Open July 1 - Sept 1	✓	✓	✓	✓
Motorized vehicles with an overall width up to and including 1.8m (70") in width.	[Symbol]	[Symbol]	Open May 1 - Nov 30	x	✓	✓	✓
			Open July 15 - Aug 22	x	x	x	✓
Road Classification Motorized vehicles insured and registered as on-highway vehicles only are permitted on these roads.	N/A	Paved Road Gravel Road	Public Highways, Departmental Licence of Occupation and Licence of Occupation Roads	Only on-highway registered vehicles permitted. Off-highway vehicles are not permitted on these roads.			

Note 1: Trail access may be amended, modified or closed by an officer in response to fire, fire hazard, flooding, wildlife or other environmental and safety concerns. Please ensure you have the current information on the area to which you are travelling and obey all posted signs and notices.

Note 2: Motorized vehicles over 70" / 1.8m in width are not permitted on [Symbol] trails

- [Symbol] No Public Motorized Access Beyond This Point
- [Symbol] Gate closed Dec.1 - Apr. 30
- [Symbol] Kiosk
- [Symbol] Staging Area
- [Symbol] Parking
- [Symbol] Popular Random Camping Areas
- [Symbol] Viewpoint
- [Symbol] Equestrian
- [Symbol] Historic Site
- [Symbol] Safety Shelter
- [Symbol] Trail Intersection Marker
- [Symbol] Livingstone Public Land Use Zone
- [Symbol] Alberta Parks & Protected Areas (Motorized use on designated trails only)
- [Symbol] Provincial Recreation Area
- [Symbol] Lakes
- [Symbol] Creeks / Rivers
- [Symbol] Kananaskis Country 1 km Buffer (No camping / No Fires / No Motorized)
- [Symbol] Gun Range Overshoot Area



© 2021 Government of Alberta
Coordinate System: NAD83 10TM AEP Forest
Alberta Environment and Parks

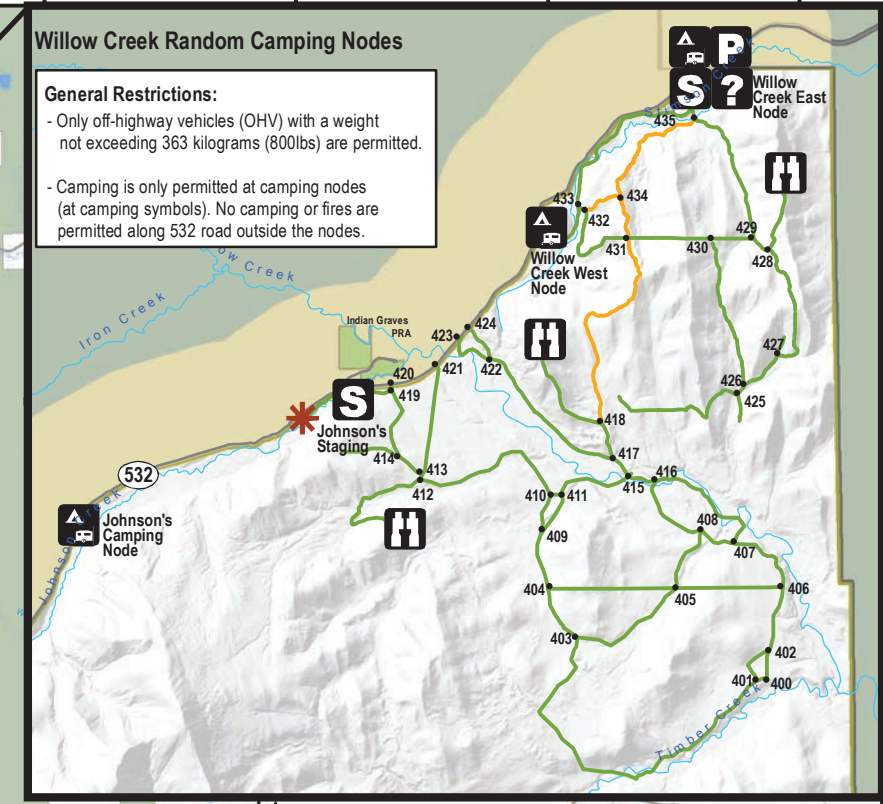
Where applicable:
Base data provided by the Government of Alberta under the Alberta Open Data License (2021).
The Minister and the Crown provides this information without warranty or representation as to any matter including but not limited to whether the data/information is correct, accurate, or free from error, defect, danger, or hazard and whether it is otherwise useful or suitable for any use the user may make of it.

Liability Disclaimer

This brochure is provided for information purposes and to advise you of the many rules relating to trail use and camping. Use of the trail system and camping nodes are entirely at your own risk. The trails have not been classified by degree of difficulty and little or no maintenance is done on these trails; natural and man-made hazards may exist. The trail system can be difficult and physically challenging and conditions may change due to weather and other factors. For example, trails that may be easy to traverse under dry or frozen conditions may be hazardous and/or impassable under spring thaw or wet conditions. It is up to users of the trail system to learn the necessary skills for their safe enjoyment and to exercise caution in potentially hazardous areas.

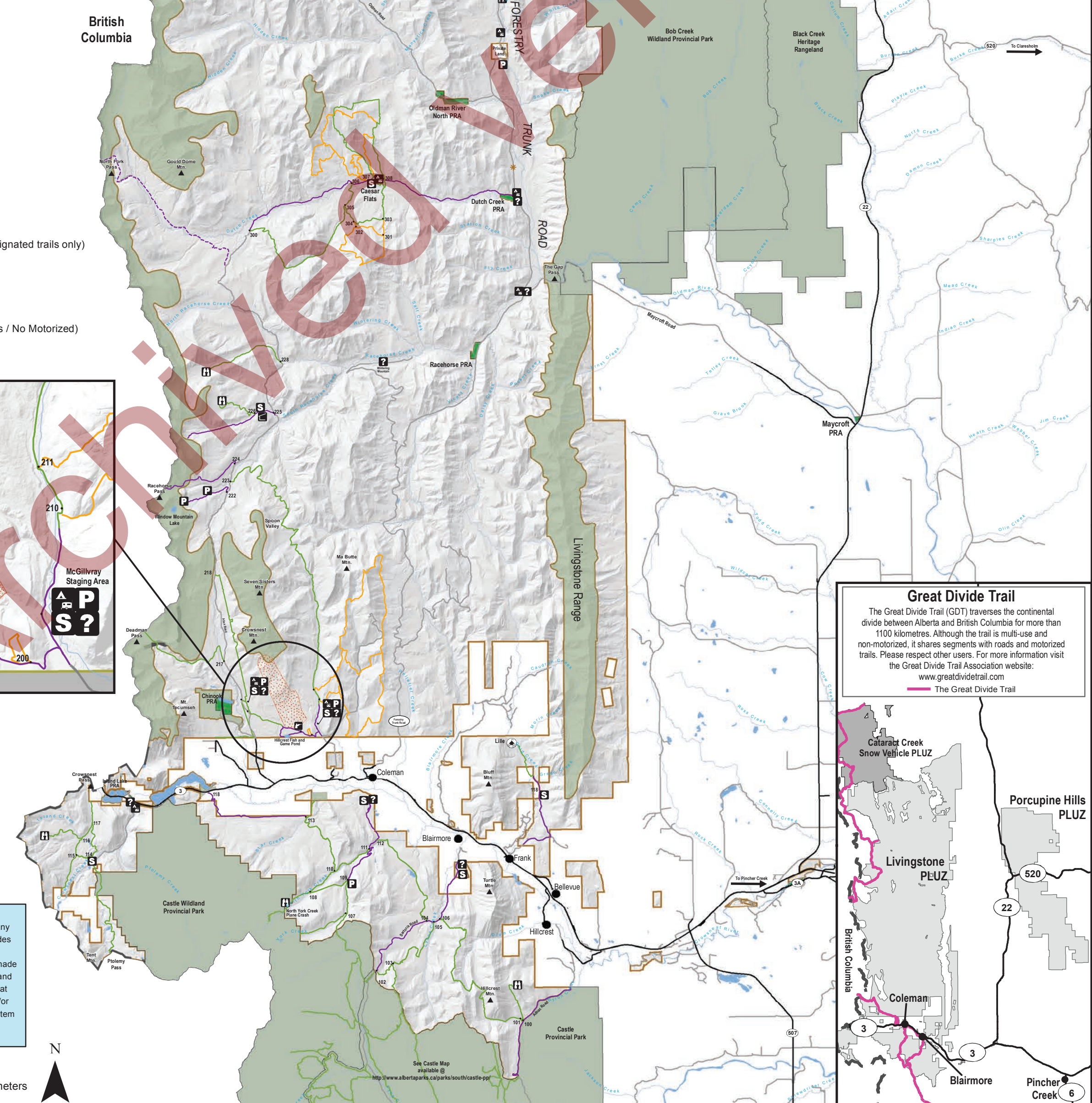


Cataract Creek Snow Vehicle PLUZ
This PLUZ only permits non-motorized activity in the summer. For more information refer to "Motorized Public Land Use Zones of Kananaskis Country" map.



General Restrictions:
- Only off-highway vehicles (OHV) with a weight not exceeding 363 kilograms (800lbs) are permitted.
- Camping is only permitted at camping nodes (at camping symbols). No camping or fires are permitted along 532 road outside the nodes.

British Columbia



Great Divide Trail
The Great Divide Trail (GDT) traverses the continental divide between Alberta and British Columbia for more than 1100 kilometres. Although the trail is multi-use and non-motorized, it shares segments with roads and motorized trails. Please respect other users. For more information visit the Great Divide Trail Association website: www.greatdividetrail.com

