

# Labour Market Notes

## Alberta's labour market on solid footing

### Alberta

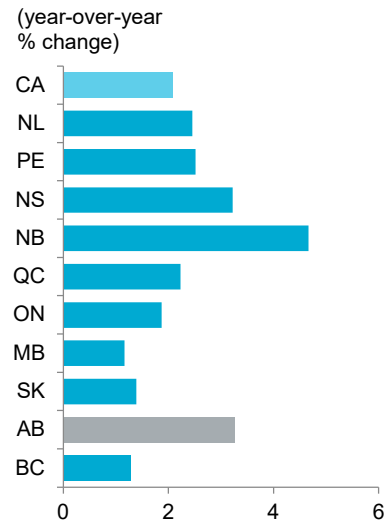
- **Employment holds on to gains.** Employment in the province held relatively steady (+1,600 month-over-month or m/m) in February, adding to the outsized gain in January. Compared to a year ago, employment was up 3.3%.
- **Full-time positions march on.** Full time positions grew (+10,900 m/m) for the third consecutive month. They have accounted for the bulk of the year-over-year (y/y) increase in employment (+90,800). Meanwhile, part-time positions decreased by 9,300 m/m, following the jump in the previous month.
- **Manufacturing props up goods sector.** Employment in the goods-producing sector (+6,800 m/m) increased for the third consecutive month. The goods sector appears to be gaining momentum, supported by ongoing growth in manufacturing employment and recent gains in natural resources and utilities.
- **Services sector retreats.** Employment in the services sector (-5,100 m/m) pulled back, following four months of gains. Declines in wholesale & retail trade and educational services were partially offset by higher levels in transportation & warehousing and health care & social assistance. Despite the setback, service sector employment was up 3.7% from a year ago.
- **Private sector eases.** Employment in the private sector fell by 9,000 m/m after surging in January. This was countered by a jump in self-employment (+8,700 m/m) and an increase in public sector employment (+1,900 m/m). Despite the decline in February, the private sector has accounted for 70,500 of the 76,900 jobs added over the last 12 months.
- **Unemployment rate dips.** The unemployment rate declined from 6.0% to 5.8% in February as the gain in employment was accompanied by a drop in the participation rate. The participation rate fell 0.3 percentage points to 70.0% and the labour force contracted by 3,400 in the month despite strong working-age population growth.
- **Fewer hours worked.** Despite the increase in employment, total hours worked went down 0.9% in the month. However, they were up 3.3% compared to February 2022.
- **Wages jump.** Average hourly wages in Alberta surged 1.7% m/m to \$34.63 and were up 4.4% from the same period a year ago.

### Canada

- **National employment moves higher.** Nationally, employment rose by 21,800 in February, led by gains in Ontario and BC.
- **Unemployment rate unchanged.** The national unemployment rate remained at 5.0% for the third consecutive month, as the gains in employment were accompanied by growth in the labour force.
- **Wages go up.** Nationally, average hourly wages moved higher to \$33.16 (+0.5% m/m) and were up 5.4% y/y.

### EMPLOYMENT GROWTH BY PROVINCE

February 2023 vs. February 2022



Sources: Statistics Canada, Haver Analytics

### ALBERTA LABOUR MARKET INDICATORS

Indicator	Latest*
Employment	2,431,300
month-over-month change	1,600
year-over-year % change	3.3%
Alberta Unemployment Rate (UR)	5.8%
Edmonton UR**	5.4%
Calgary UR**	6.6%
Participation Rate	70.0%
Average Weekly Earnings (AWE)	\$1,268.07
year-over-year % change	2.2%
Average Hourly Wage	\$34.63
year-over-year % change	4.4%
Job Vacancy Rate	3.5%

Sources: Statistics Canada, Haver Analytics

\* All data is from the February 2023 Labour Force Survey, except AWE which is from the December 2022 Survey of Employment, Payrolls and Hours, and the Job Vacancy Rate which is from the December 2022 Job Vacancy and Wage Survey.

\*\* This indicator is calculated as a three month moving average and is seasonally adjusted.

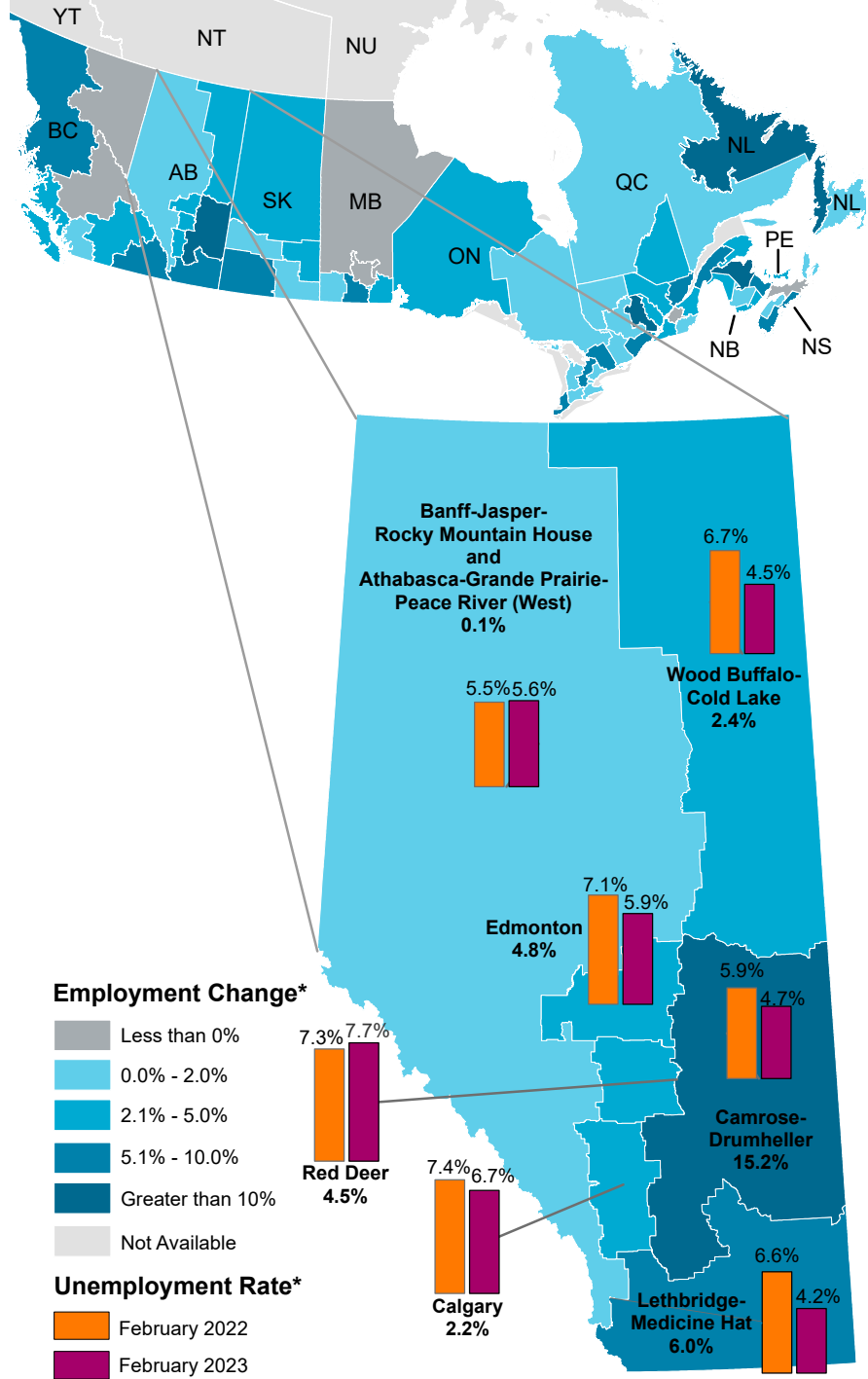
# Regional labour market indicators

	2021	2022	2023 YTD
<b>Alberta</b>			
Population	1.0	2.1	2.8
Labour Force	2.0	1.8	2.7
Employment	5.1	5.1	3.9
Unemployment Rate	8.7	5.8	5.9
<b>Calgary</b>			
Population	1.3	2.3	3.1
Labour Force	0.4	4.3	2.1
Employment	3.3	7.7	3.2
Unemployment Rate	9.1	6.1	6.6
<b>Edmonton</b>			
Population	1.4	2.4	3.2
Labour Force	5.0	0.2	2.6
Employment	8.7	3.5	3.8
Unemployment Rate	8.9	5.8	5.9
<b>West</b>			
Population	0.1	1.2	2.1
Labour Force	1.4	-0.6	0.1
Employment	4.8	2.6	0.2
Unemployment Rate	8.1	5.1	5.4
<b>Lethbridge - Medicine Hat</b>			
Population	0.3	1.3	2.1
Labour Force	-0.2	2.3	4.2
Employment	1.7	5.3	7.5
Unemployment Rate	8.6	6.9	4.0
<b>Red Deer</b>			
Population	0.8	1.8	2.5
Labour Force	2.2	-3.7	4.9
Employment	5.1	-0.7	4.5
Unemployment Rate	11.6	9.0	7.7
<b>Camrose - Drumheller</b>			
Population	-0.4	0.6	1.3
Labour Force	-0.7	3.4	12.2
Employment	2.0	7.3	14.8
Unemployment Rate	8.4	4.9	3.9
<b>Wood Buffalo - Cold Lake</b>			
Population	-0.2	1.0	1.8
Labour Force	-1.3	1.3	-0.1
Employment	1.3	2.9	2.3
Unemployment Rate	7.1	5.6	4.7

Sources: Statistics Canada, Haver Analytics  
 All numbers are percent growth, except unemployment rates.

## EMPLOYMENT GROWTH BY ECONOMIC REGION

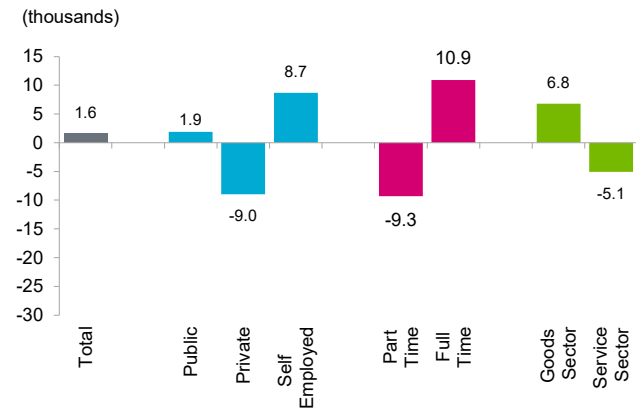
Per cent change in year-over-year employment, February 2023



Contact Ceilidh Ballantyne at [TBF.ERFPublications@gov.ab.ca](mailto:TBF.ERFPublications@gov.ab.ca)  
 Have a question? Send us an [email](#)

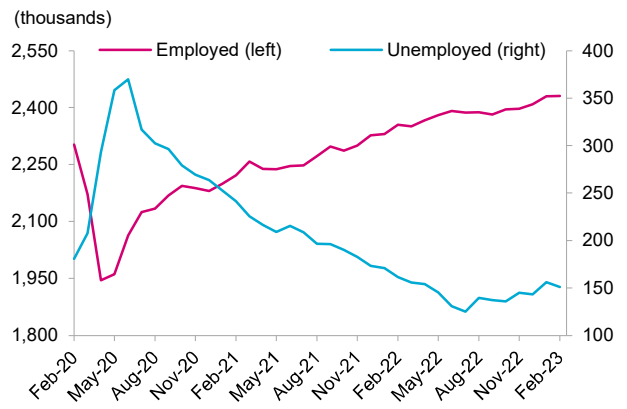
**CHART 1: EMPLOYMENT GAINS CONCENTRATED IN GOODS SECTOR, FULL TIME POSITIONS, AND AMONGST SELF EMPLOYED**

Monthly change in employment



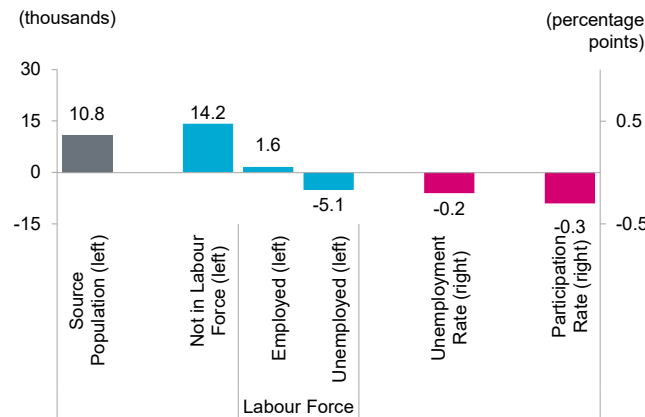
**CHART 2: UNEMPLOYMENT DIPS AND REMAINS BELOW PRE-COVID LEVELS**

Number of employed and unemployed



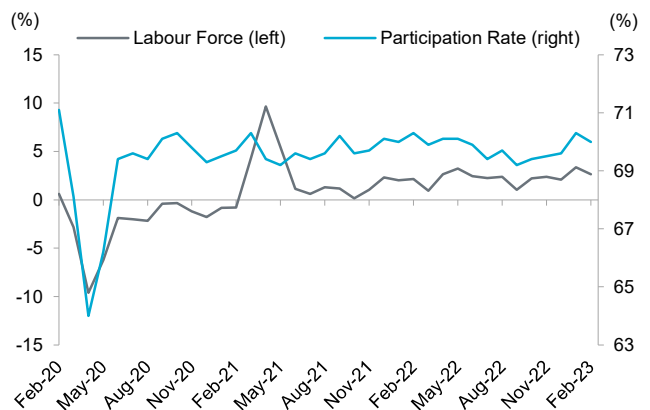
**CHART 3: PARTICIPATION RATE DECLINES**

Monthly change in labour market indicators, Feb 2023



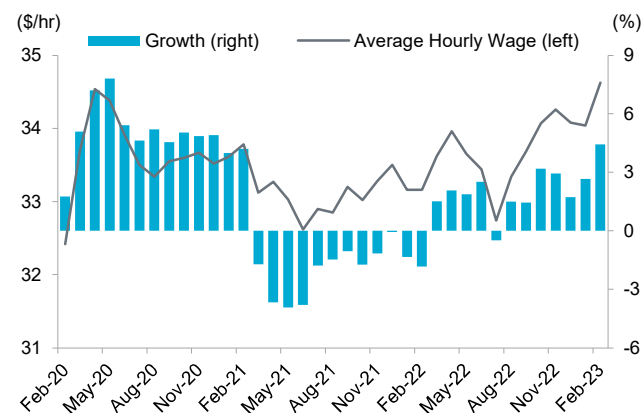
**CHART 4: PART. RATE FALLS AND REMAINS BELOW PRE-COVID LEVELS**

Participation rate and year-over-year growth in labour force



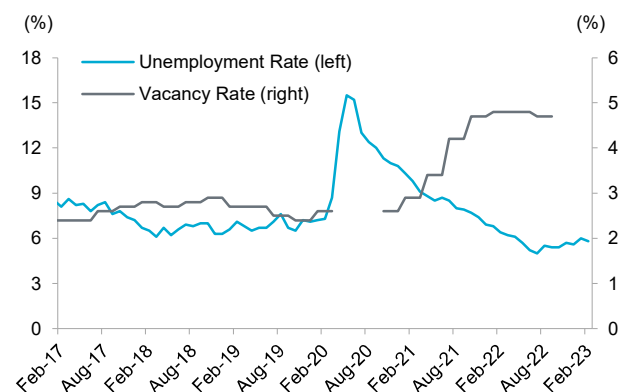
**CHART 5: HOURLY WAGE JUMPS IN FEBRUARY**

Average hourly wage and y/y growth, non-seasonally adj

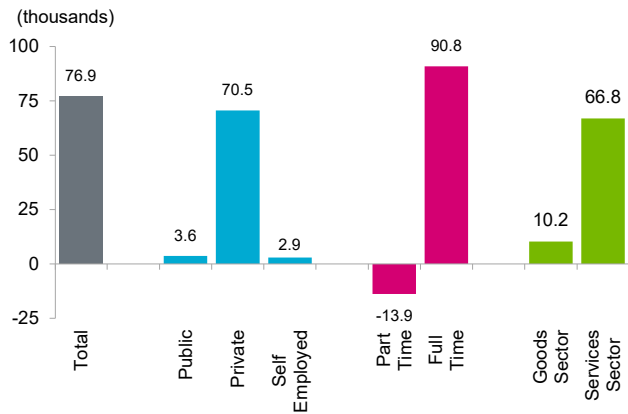


**CHART 6: JOB VACANCY AND UNEMPLOYMENT RATES CONTINUE TO DIVERGE**

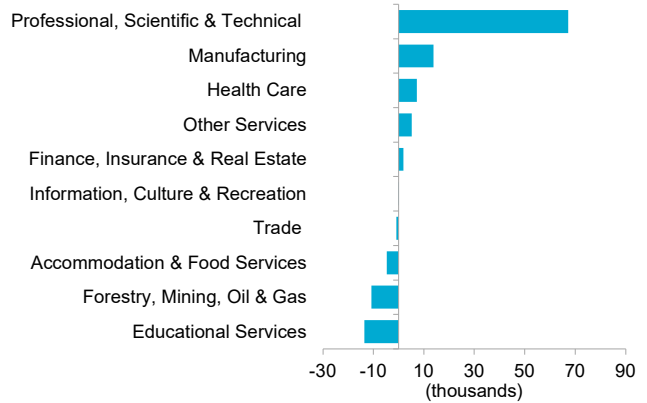
Unemployment rate and job vacancy rate



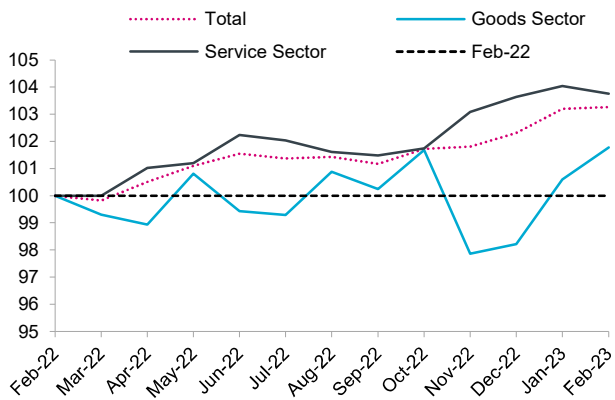
**CHART 7: ANNUAL GAINS PROPPED BY PRIVATE SECTOR, FULL-TIME, AND SERVICES SECTOR JOBS**  
Change in employment since Feb 2022



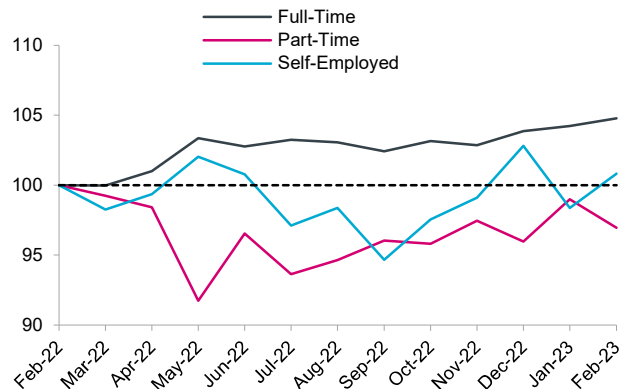
**CHART 8: PROFESSIONAL, SCIENTIFIC & TECHNICAL SERVICES DRIVE Y/Y GROWTH**  
Change in employment since Feb 2022



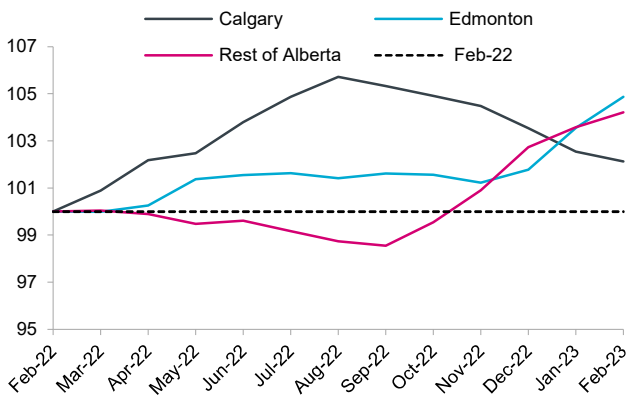
**CHART 9: GOODS SECTOR EMPLOYMENT CATCHING UP**  
Alberta employment indexed to Feb 2022, by sector



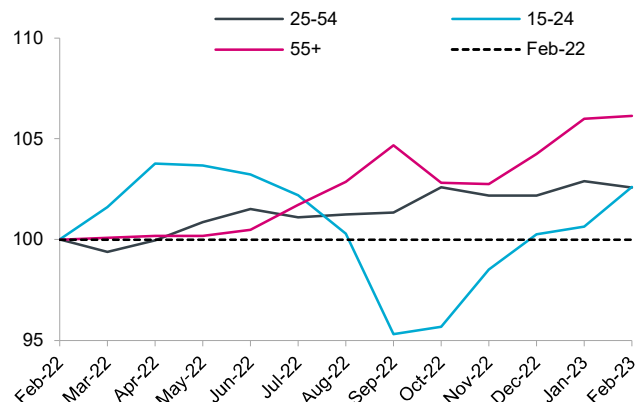
**CHART 10: FULL-TIME JOBS STILL LEAD Y/Y GAINS**  
Alberta employment indexed to Feb 2022, by type



**CHART 11: EMPLOYMENT IN ALBERTA'S NON-CMA REGIONS HAS CAUGHT UP**  
3-month average employment indexed to Feb 2022, by region

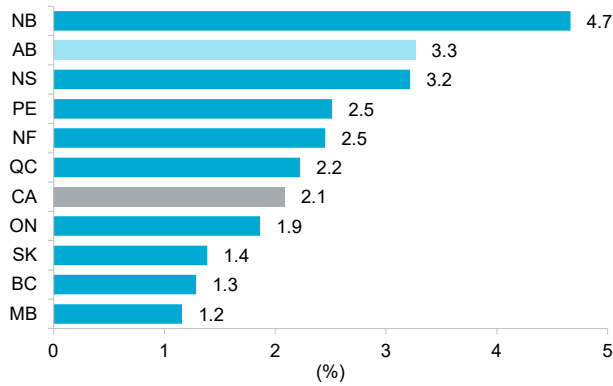


**CHART 12: YOUTH EMPLOYMENT JUMPS IN THE MONTH**  
Alberta employment indexed to Feb 2022, by age group



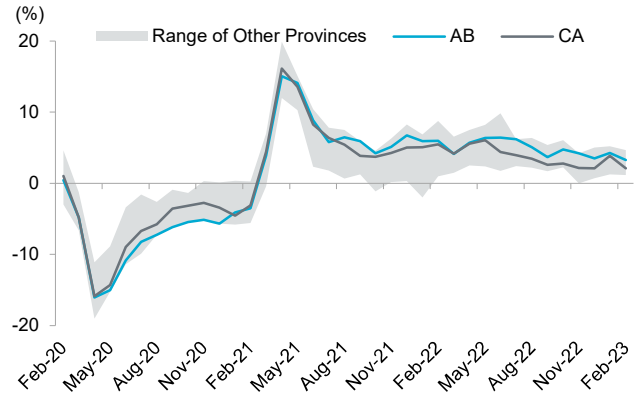
**CHART 13: STRONG ANNUAL GROWTH IN ALBERTA**

Percentage change in employment since Feb 2022



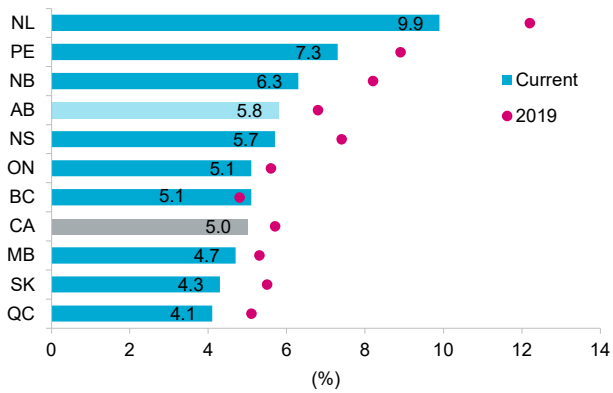
**CHART 14: GROWTH IN ALBERTA'S EMPLOYMENT OUTPACES NATIONAL AVERAGE**

Year-over-year growth in employment by province



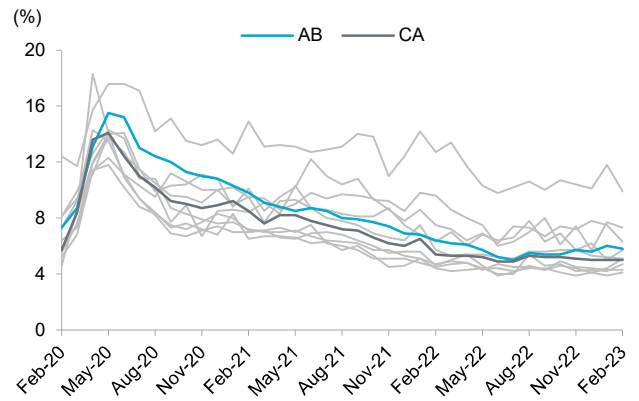
**CHART 15: ALBERTA'S UNEMPLOYMENT RATE LOWER THAN 2019 AVERAGE**

Unemployment rates by province



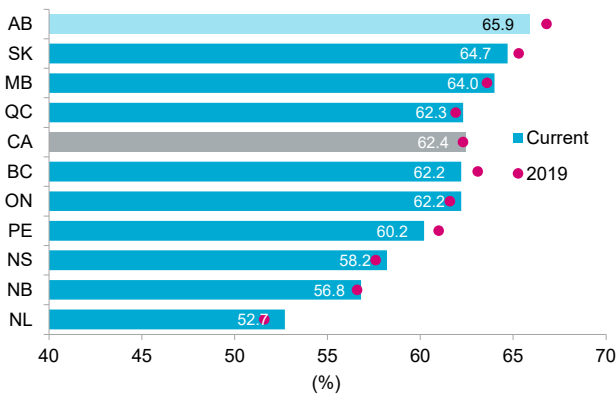
**CHART 16: ALBERTA'S UNEMPLOYMENT RATE HIGHER THAN NATIONAL AVERAGE**

Unemployment rates by province



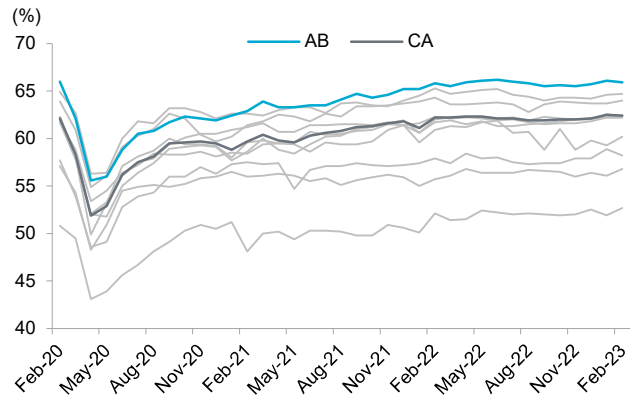
**CHART 17: ALBERTA'S EMPLOYMENT RATE DROPS FROM 2019; STILL THE HIGHEST**

Employment rates by province



**CHART 18: ALBERTA'S EMPLOYMENT RATE EXCEEDS NATIONAL AVERAGE**

Employment rates by province



Sources: Unless noted otherwise, all data are seasonally adjusted and taken from Statistics Canada and Haver Analytics. All historical data are subject to revision.

