

Labour Market Notes

Employment advances

Alberta

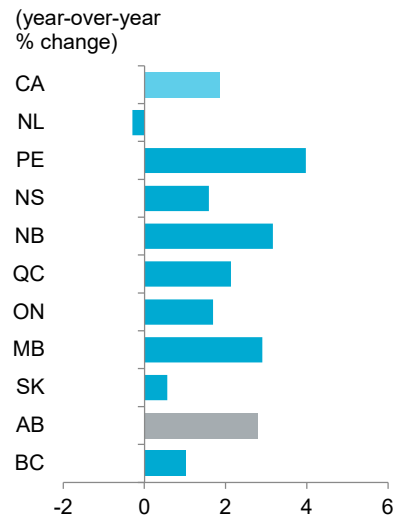
- **Labour market resilient.** Employment in the province increased (+3,900 month-over-month or m/m) despite the wildfires and associated evacuations. Compared to a year ago, employment was up 2.8%.
- **Goods sector presses on.** Goods sector employment (+6,100 m/m) went up for the second consecutive month. Construction built off the gain in April and overwhelmed a pullback in manufacturing. With gains in four out of the last five months, the goods sector has accounted for 22,400 of the 38,000 total jobs added since December 2022.
- **Services sector pulls back.** Employment in the services sector (-2,200 m/m) retreated for the second straight month after the sizeable gain in March. The monthly decline was led by professional, scientific & technical services (which saw significant increases in 2021) and transportation & warehousing. This was moderated by employment gains in educational services, finance & insurance, and wholesale & retail trade.
- **Private sector source of strength.** Employment in the private sector jumped by 23,300 m/m after retreating in April. Meanwhile, public sector employment grew (+1,900 m/m) while self employment retreated sharply (-21,400 m/m). The private sector has grown by 77,200 over the last 12 months, accounting for all of the total job gains (+66,600).
- **Part-time positions rebound.** Part-time positions (+3,000 m/m) recouped some of the losses of the previous month. Full-time positions also ticked up (+900 m/m) for the sixth consecutive month. Full-time positions have accounted for the bulk of the year-over-year (y/y) gains (+42,900).
- **Unemployment rate moves lower.** With higher employment and a lower participation rate, the unemployment rate moved from 5.9% in April to 5.7% in May. The participation rate declined from 69.8% to 69.5% and the labour force contracted by 2,400 in the month despite strong population growth.
- **More hours worked.** With the increase in employment, total hours worked went up 6.5% in the month. They were up 3.7% compared to May 2022.
- **Wages slide.** Average hourly wages declined 1.1% m/m in May to \$34.63 but were up 2.9% y/y.

Canada

- **National employment moves lower.** Nationally, employment fell by 17,300 in May, with declines in Ontario, Nova Scotia, Newfoundland & Labrador, and PEI.
- **Unemployment rate ticks up.** The national unemployment rate moved up to 5.2%, ending five consecutive months at 5.0%.
- **Wages retreat.** Nationally, average hourly wages moved lower to \$33.25 (-0.4% m/m) but were up 5.1% y/y.

EMPLOYMENT GROWTH BY PROVINCE

May 2023 vs. May 2022



Sources: Statistics Canada, Haver Analytics

ALBERTA LABOUR MARKET INDICATORS

Indicator	Latest*
Employment	2,447,000
month-over-month change	3,900
year-over-year % change	2.8%
Alberta Unemployment Rate (UR)	5.7%
Edmonton UR**	6.0%
Calgary UR**	6.3%
Participation Rate	69.5%
Average Weekly Earnings (AWE)	\$1,267.97
year-over-year % change	1.1%
Average Hourly Wage	\$34.63
year-over-year % change	2.9%
Job Vacancy Rate	4.2%

Sources: Statistics Canada, Haver Analytics

* All data is from the May 2023 Labour Force Survey, except AWE which is from the March 2023 Survey of Employment, Payrolls and Hours, and the Job Vacancy Rate which is from the March 2023 Job Vacancy and Wage Survey.

** This indicator is calculated as a three month moving average and is seasonally adjusted.

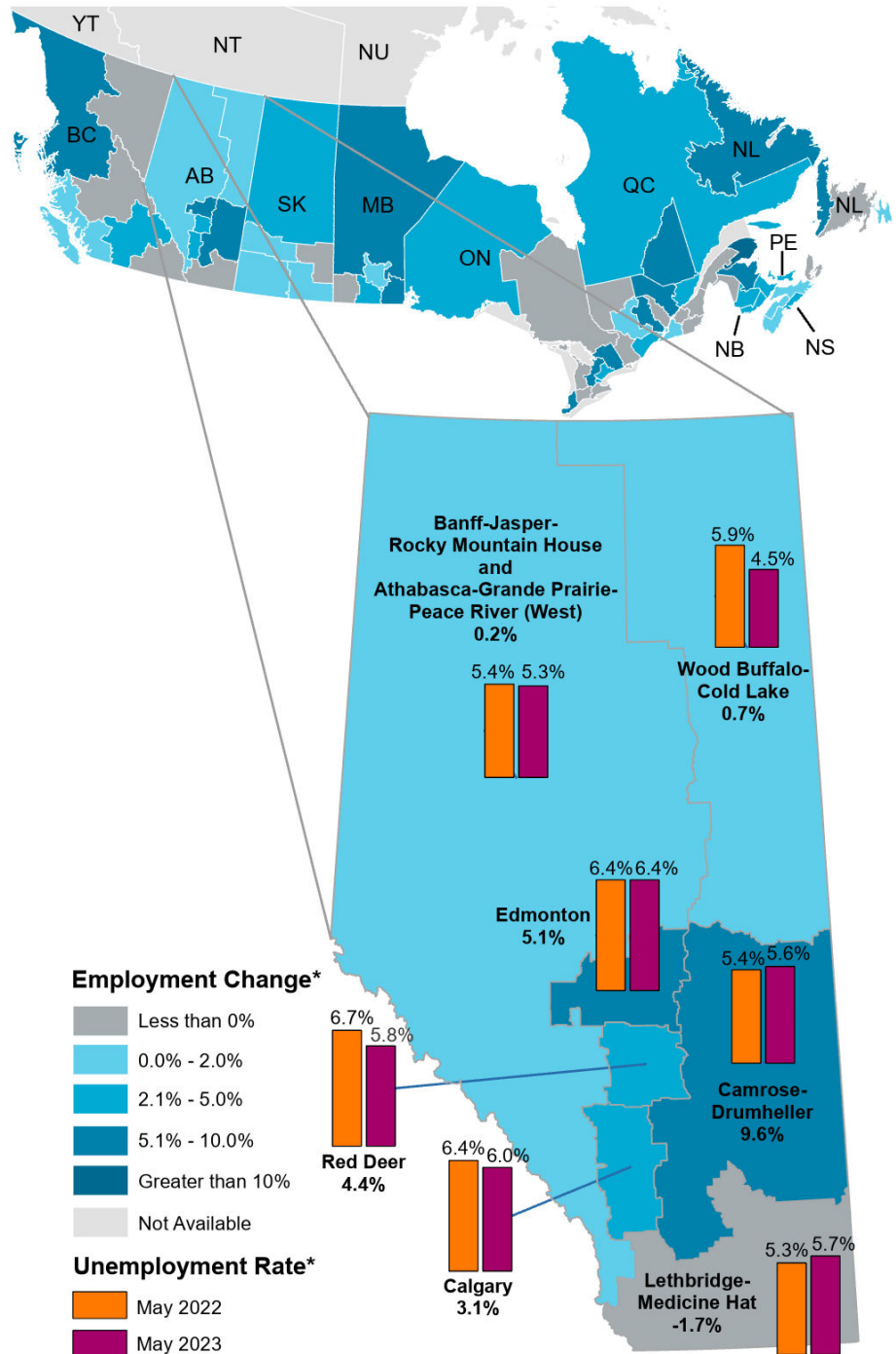
Regional labour market indicators

	2021	2022	2023 YTD
Alberta			
Population	1.0	2.1	3.1
Labour Force	2.0	1.8	3.0
Employment	5.1	5.1	3.8
Unemployment Rate	8.7	5.8	6.1
Calgary			
Population	1.3	2.3	3.4
Labour Force	0.4	4.3	2.1
Employment	3.3	7.7	2.9
Unemployment Rate	9.1	6.1	6.5
Edmonton			
Population	1.4	2.4	3.5
Labour Force	5.0	0.2	3.9
Employment	8.7	3.5	4.8
Unemployment Rate	8.9	5.8	6.1
West			
Population	0.1	1.2	2.2
Labour Force	1.4	-0.6	0.4
Employment	4.8	2.6	0.4
Unemployment Rate	8.1	5.1	5.5
Lethbridge - Medicine Hat			
Population	0.3	1.3	2.3
Labour Force	-0.2	2.3	1.4
Employment	1.7	5.3	2.7
Unemployment Rate	8.6	6.9	4.9
Red Deer			
Population	0.8	1.8	2.7
Labour Force	2.2	-3.7	4.1
Employment	5.1	-0.7	4.0
Unemployment Rate	11.6	9.0	7.1
Camrose - Drumheller			
Population	-0.4	0.6	1.5
Labour Force	-0.7	3.4	13.1
Employment	2.0	7.3	13.9
Unemployment Rate	8.4	4.9	5.1
Wood Buffalo - Cold Lake			
Population	-0.2	1.0	2.0
Labour Force	-1.3	1.3	-0.3
Employment	1.3	2.9	1.7
Unemployment Rate	7.1	5.6	4.5

Sources: Statistics Canada, Haver Analytics
All numbers are percent growth, except unemployment rates.

EMPLOYMENT GROWTH BY ECONOMIC REGION

Per cent change in year-over-year employment, May 2023



Contact Ceilidh Ballantyne at TBF.ERFPublications@gov.ab.ca
Have a question? Send us an [email](#)

CHART 1: EMPLOYMENT GAINS CONCENTRATED IN GOODS SECTOR AND PRIVATE SECTOR

Monthly change in employment, May 2023

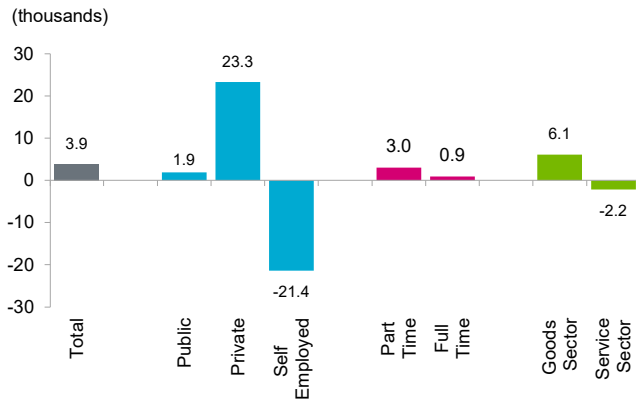


CHART 2: UNEMPLOYMENT DIPS AND REMAINS BELOW PRE-COVID LEVELS

Number of employed and unemployed (thousands)

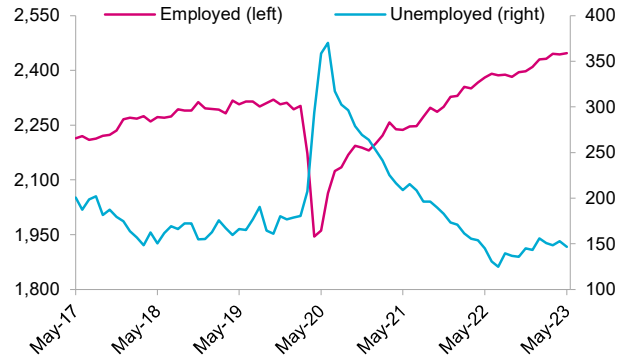


CHART 3: PARTICIPATION RATE MOVES DOWN

Monthly change in labour market indicators, May 2023

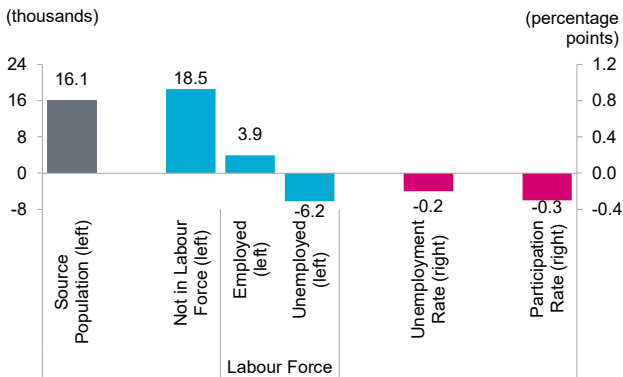


CHART 4: PART. RATE REMAINS SUBDUED

Participation rate and year-over-year growth in labour force

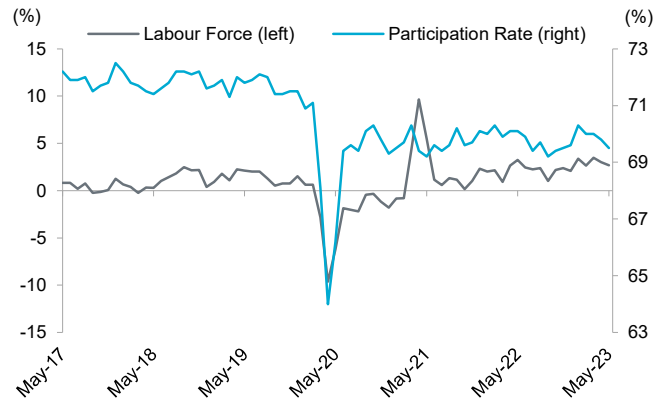


CHART 5: HOURLY WAGE RETREATS IN MAY

Average hourly wage and y/y growth, non-seasonally adj

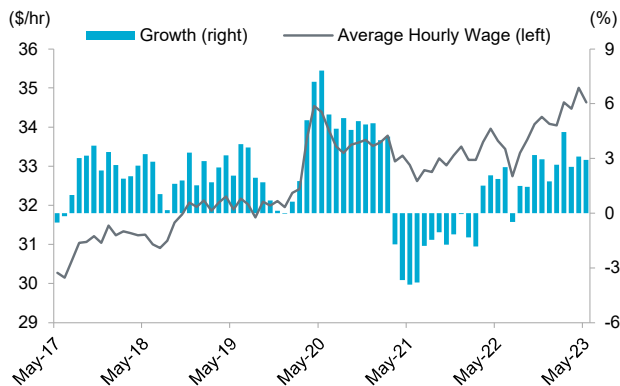


CHART 6: JOB VACANCY AND UNEMPLOYMENT RATES CONTINUE TO DIVERGE

Unemployment rate and job vacancy rate

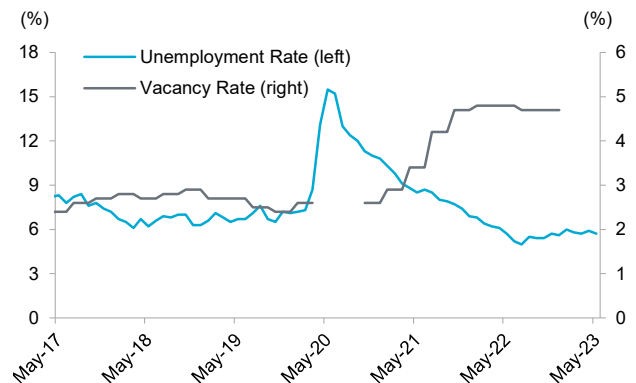


CHART 7: ANNUAL GAINS PROPPED BY PRIVATE SECTOR, FULL-TIME, AND SERVICES SECTOR JOBS

Change in employment since May 2022

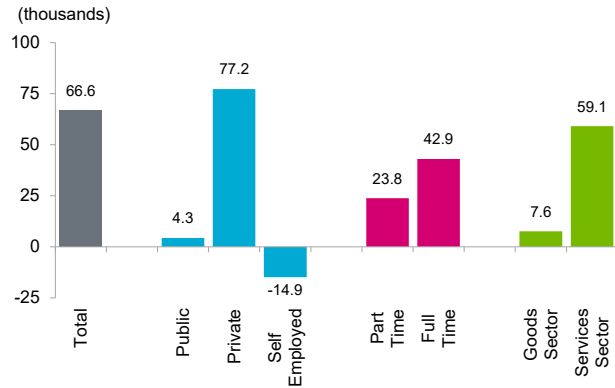


CHART 8: PROFESSIONAL, SCIENTIFIC & TECHNICAL SERVICES DRIVE Y/Y GROWTH

Change in employment since May 2022

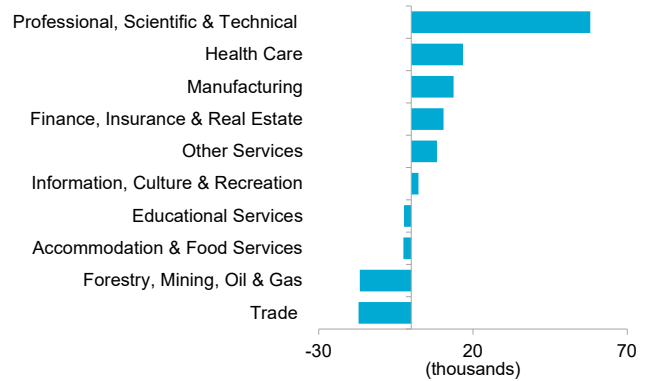


CHART 9: GOODS SECTOR INCHING UP

Alberta employment indexed to May 2022, by sector

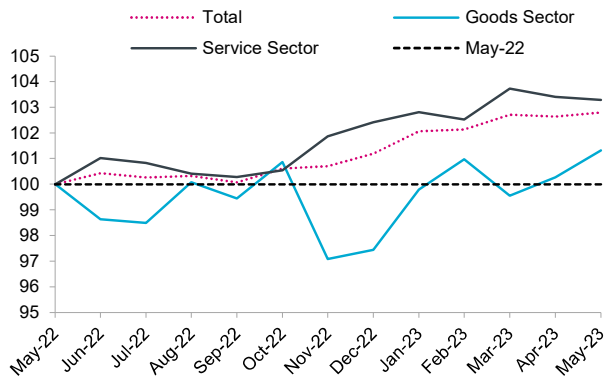


CHART 10: SELF-EMPLOYMENT LAGGING

Alberta employment indexed to May 2022, by type

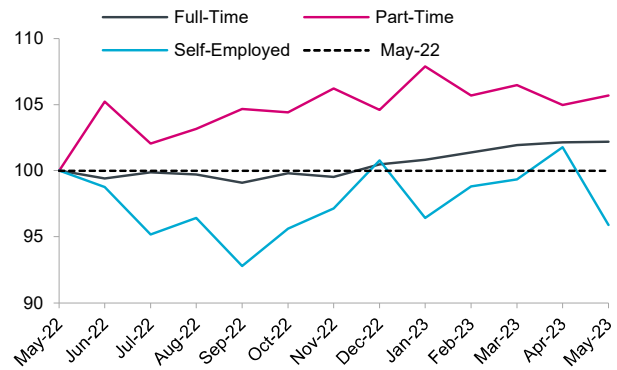


CHART 11: MAJOR CENTRES LEAD GAINS

3-month average employment indexed to May 2022, by region

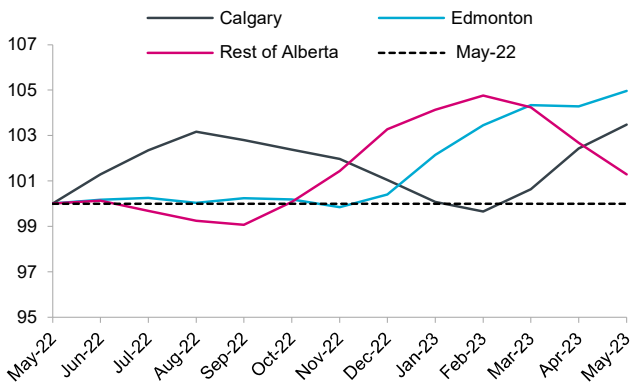


CHART 12: YOUTH EMPLOYMENT FALLS IN THE MONTH

Alberta employment indexed to May 2022, by age group

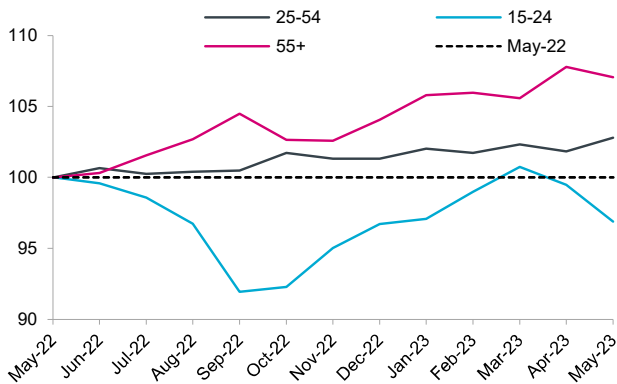


CHART 13: STRONG ANNUAL GROWTH IN ALBERTA

Percentage change in employment since May 2022

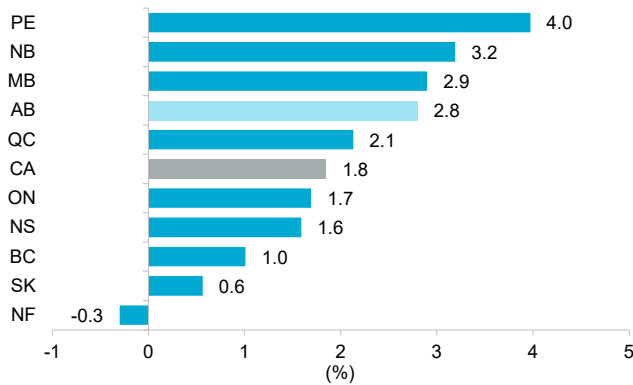


CHART 14: GROWTH IN ALBERTA'S EMPLOYMENT OUTPACES NATIONAL AVERAGE

Year-over-year growth in employment by province

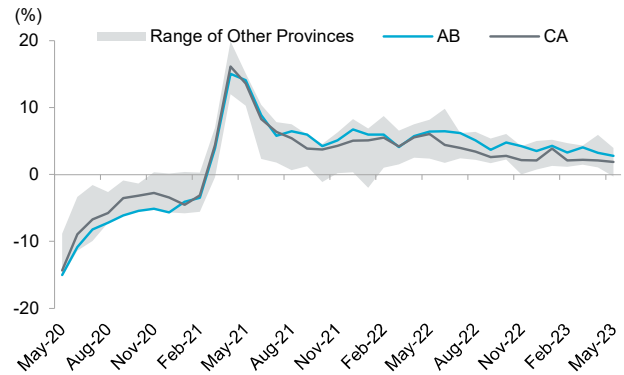


CHART 15: ALBERTA'S UNEMPLOYMENT RATE LOWER THAN 2019 AVERAGE

Unemployment rates by province

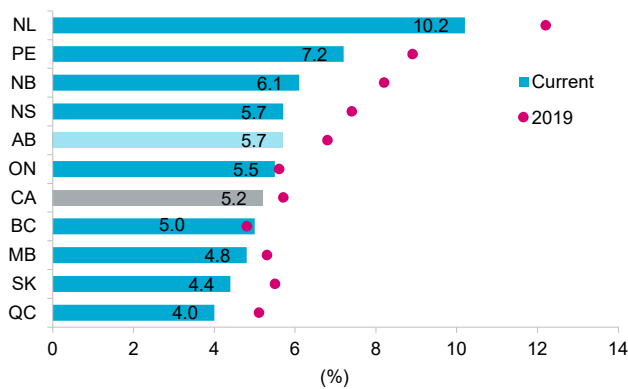


CHART 16: ALBERTA'S UNEMPLOYMENT RATE HIGHER THAN NATIONAL AVERAGE

Unemployment rates by province

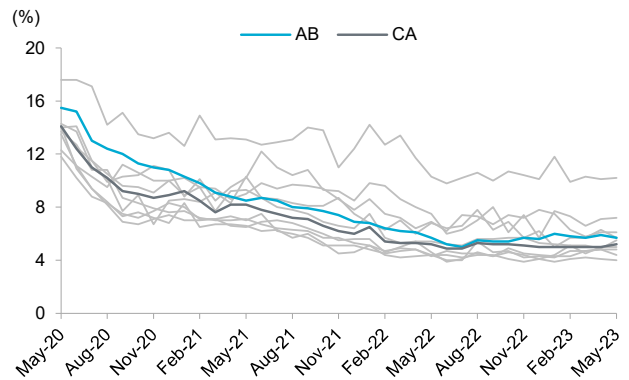


CHART 17: ALBERTA'S EMPLOYMENT RATE DROPS FROM 2019; STILL THE HIGHEST

Employment rates by province

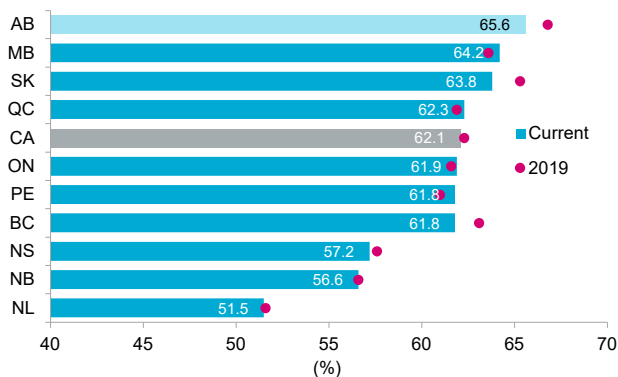
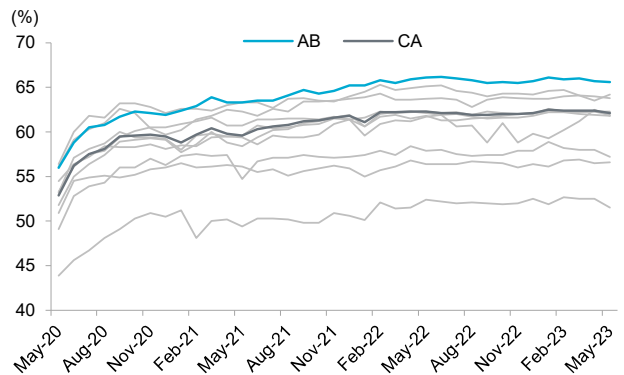


CHART 18: ALBERTA'S EMPLOYMENT RATE EXCEEDS NATIONAL AVERAGE

Employment rates by province



Sources: Unless noted otherwise, all data are seasonally adjusted and taken from Statistics Canada and Haver Analytics. All historical data are subject to revision.