

Labour Market Notes

Employment holds steady

Alberta

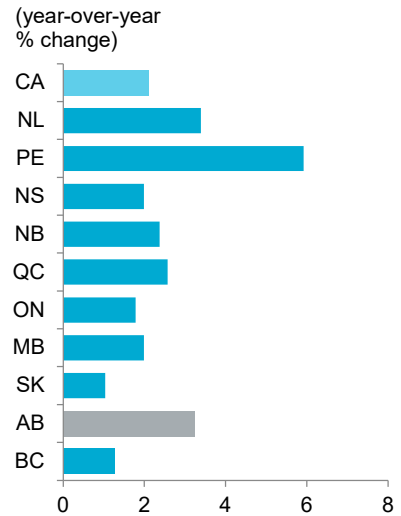
- **Labour market takes a breather.** Employment in the province eased (-1,900 month-over-month or m/m) in April, ending sixth months of consecutive growth. Compared to a year ago, employment was up 3.2%.
- **Services sector pulls back.** Employment in the services sector (-6,000 m/m) pared back some of the sizeable gain in the previous month. The monthly decline was led by business, building, & other support services, trade, and finance & insurance. This was moderated by accommodation & food services, which had its strongest monthly growth in over a year.
- **Goods sector rebounds.** Goods sector employment (+4,100 m/m) recouped some of the losses from March. Gains in construction and manufacturing overwhelmed slight pullbacks in natural resources and utilities. With gains in three out of the last four months, the goods sector has accounted for 16,300 of the 34,100 total jobs gained since December 2022.
- **Private sector takes a step back.** Employment in the private sector declined by 14,800 m/m after advancing in March. Despite the monthly drop, the private sector has accounted for 51,700 of the 76,700 jobs added over the last 12 months.
- **Full-time positions continue to advance.** Full-time positions grew (+4,300 m/m) for the fifth consecutive month. They have accounted for all of the year-over-year (y/y) increase in employment (+86,500). Conversely, part-time positions fell (-6,300 m/m) following the increase in the previous month.
- **Unemployment rate ticks up.** With lower employment, the unemployment rate moved up from 5.7% to 5.9% in April. The participation rate declined from 70.0% to 69.8% and the labour force expanded by 2,400 in the month.
- **Fewer hours worked.** With the dip in employment, total hours worked went down 2.6% in the month. However, they were up 9.6% compared to April 2022.
- **Wages jump.** Average hourly wages surged 1.6% m/m in April to \$35.01 and were up 3.1% y/y.

Canada

- **National employment moves higher.** Nationally, employment rose by 41,400 in April, led by gains in Ontario and Quebec.
- **Unemployment rate unchanged.** The national unemployment rate remained at 5.0% for the fifth consecutive month, as the gains in employment were accompanied by growth in the labour force.
- **Wages advance.** Nationally, average hourly wages moved higher to \$33.38 (+0.8% m/m) and were up 5.2% y/y.

EMPLOYMENT GROWTH BY PROVINCE

April 2023 vs. April 2022



Sources: Statistics Canada, Haver Analytics

ALBERTA LABOUR MARKET INDICATORS

Indicator	Latest*
Employment	2,443,100
month-over-month change	-1,900
year-over-year % change	3.2%
Alberta Unemployment Rate (UR)	5.9%
Edmonton UR**	5.7%
Calgary UR**	6.4%
Participation Rate	69.8%
Average Weekly Earnings (AWE)	\$1,258.93
year-over-year % change	1.3%
Average Hourly Wage	\$35.01
year-over-year % change	3.1%
Job Vacancy Rate	4.3%

Sources: Statistics Canada, Haver Analytics

* All data is from the April 2023 Labour Force Survey, except AWE which is from the February 2023 Survey of Employment, Payrolls and Hours, and the Job Vacancy Rate which is from the February 2023 Job Vacancy and Wage Survey.

** This indicator is calculated as a three month moving average and is seasonally adjusted.

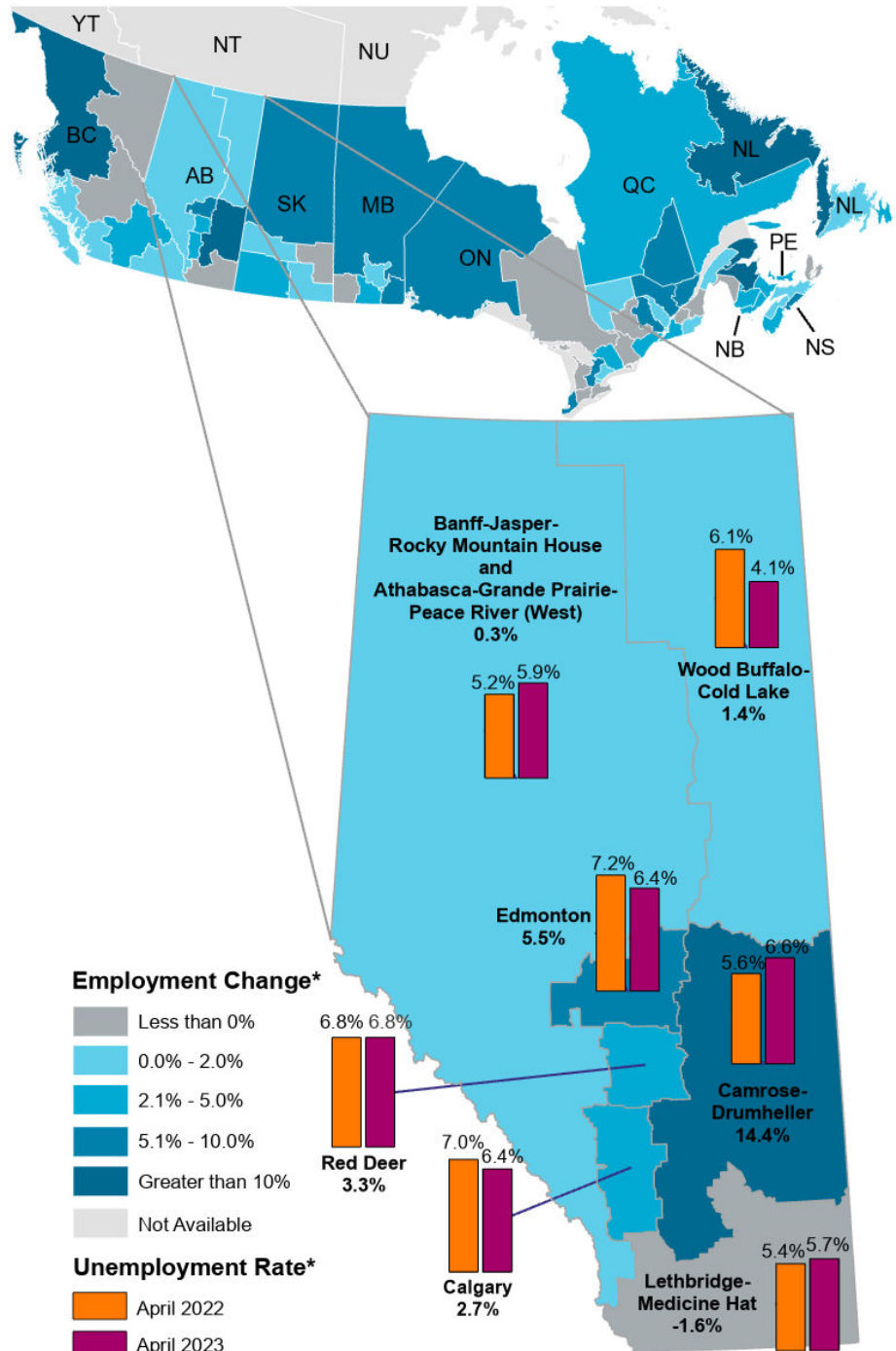
Regional labour market indicators

	2021	2022	2023 YTD
Alberta			
Population	1.0	2.1	3.0
Labour Force	2.0	1.8	3.0
Employment	5.1	5.1	3.9
Unemployment Rate	8.7	5.8	6.1
Calgary			
Population	1.3	2.3	3.3
Labour Force	0.4	4.3	2.0
Employment	3.3	7.7	2.8
Unemployment Rate	9.1	6.1	6.6
Edmonton			
Population	1.4	2.4	3.4
Labour Force	5.0	0.2	3.6
Employment	8.7	3.5	4.7
Unemployment Rate	8.9	5.8	6.1
West			
Population	0.1	1.2	2.2
Labour Force	1.4	-0.6	0.5
Employment	4.8	2.6	0.5
Unemployment Rate	8.1	5.1	5.5
Lethbridge - Medicine Hat			
Population	0.3	1.3	2.2
Labour Force	-0.2	2.3	2.1
Employment	1.7	5.3	3.8
Unemployment Rate	8.6	6.9	4.7
Red Deer			
Population	0.8	1.8	2.6
Labour Force	2.2	-3.7	4.3
Employment	5.1	-0.7	3.9
Unemployment Rate	11.6	9.0	7.5
Camrose - Drumheller			
Population	-0.4	0.6	1.5
Labour Force	-0.7	3.4	13.9
Employment	2.0	7.3	15.0
Unemployment Rate	8.4	4.9	4.9
Wood Buffalo - Cold Lake			
Population	-0.2	1.0	1.9
Labour Force	-1.3	1.3	-0.2
Employment	1.3	2.9	2.0
Unemployment Rate	7.1	5.6	4.5

Sources: Statistics Canada, Haver Analytics
 All numbers are percent growth, except unemployment rates.

EMPLOYMENT GROWTH BY ECONOMIC REGION

Per cent change in year-over-year employment, April 2023



Contact Ceilidh Ballantyne at TBF.ERFPublications@gov.ab.ca
 Have a question? Send us an [email](#)

CHART 1: EMPLOYMENT LOSSES CONCENTRATED IN SERVICES SECTOR, PART-TIME POSITIONS, AND IN PRIVATE SECTOR

Monthly change in employment, April 2023



CHART 2: UNEMPLOYMENT INCHES UP BUT REMAINS LOW

Number of employed and unemployed

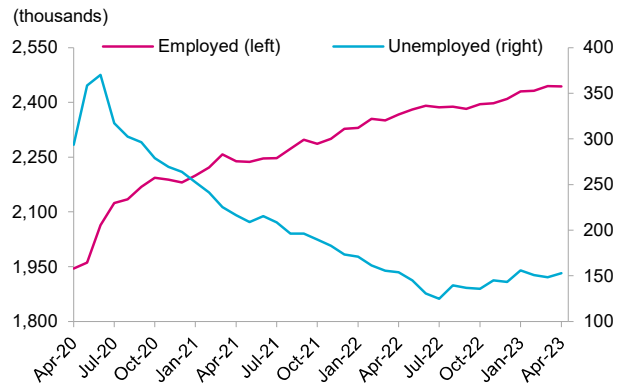


CHART 3: PARTICIPATION RATE MOVES DOWN

Monthly change in labour market indicators, April 2023



CHART 4: PART. RATE REMAINS BELOW PRE-COVID LEVELS

Participation rate and year-over-year growth in labour force

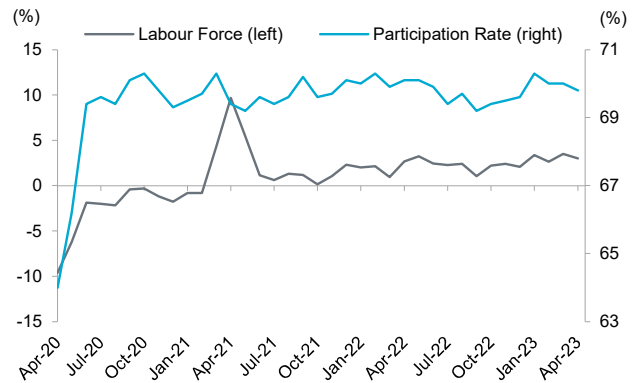


CHART 5: HOURLY WAGE JUMPS IN APRIL

Average hourly wage and y/y growth, non-seasonally adj

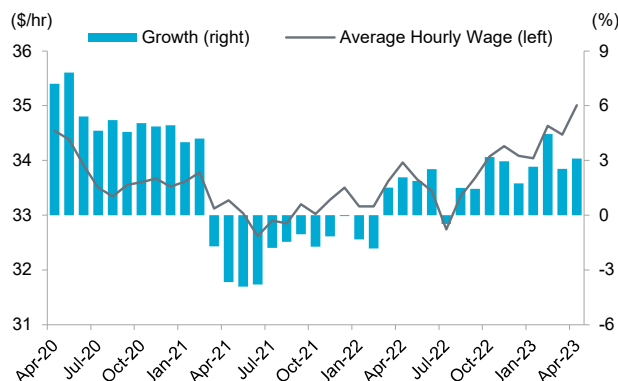


CHART 6: JOB VACANCY AND UNEMPLOYMENT RATES CONTINUE TO DIVERGE

Unemployment rate and job vacancy rate

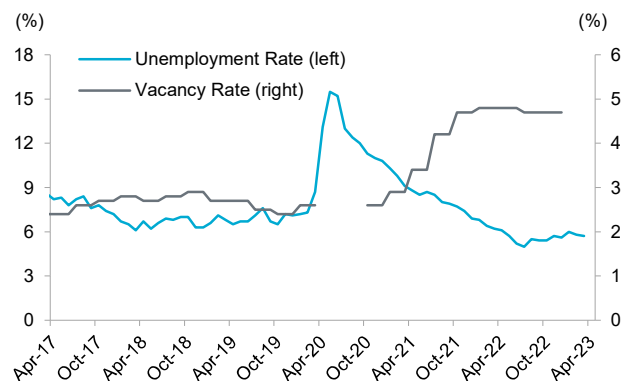


CHART 7: ANNUAL GAINS PROPPED BY PRIVATE SECTOR, FULL-TIME, AND SERVICES SECTOR JOBS

Change in employment since April 2022

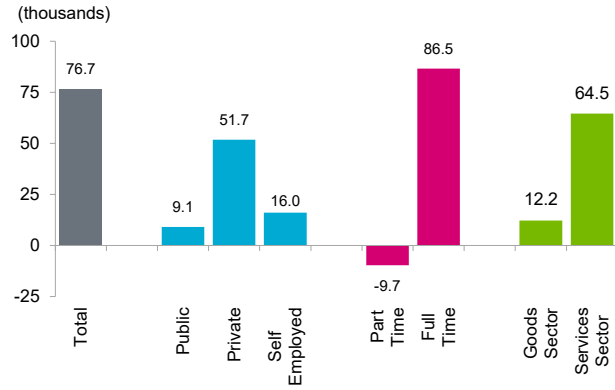


CHART 8: PROFESSIONAL, SCIENTIFIC & TECHNICAL SERVICES DRIVE Y/Y GROWTH

Change in employment since April 2022

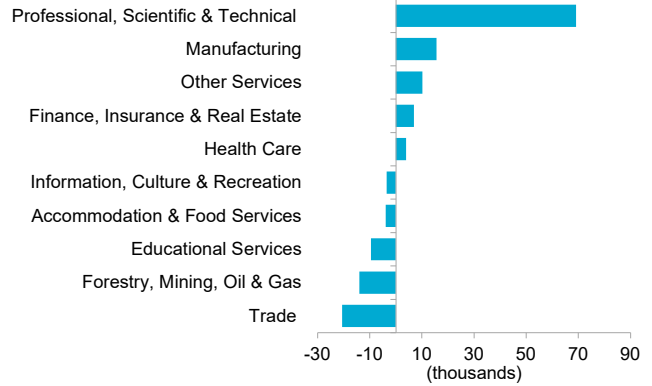


CHART 9: SERVICES SECTOR EMPLOYMENT TAKES A STEP BACK

Alberta employment indexed to April 2022, by sector

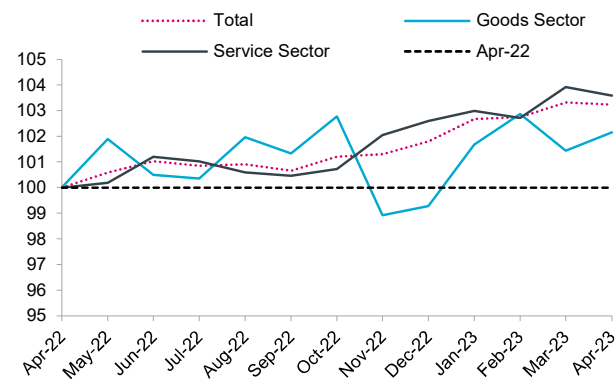


CHART 10: PART-TIME JOBS STILL LAGGING

Alberta employment indexed to April 2022, by type

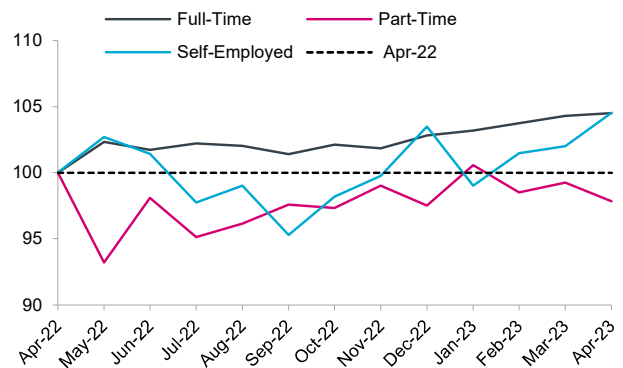


CHART 11: CALGARY EMPLOYMENT ADVANCES

3-month average employment indexed to April 2022, by region

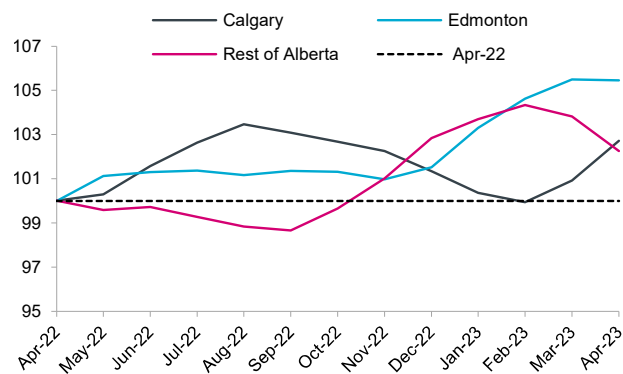


CHART 12: YOUTH EMPLOYMENT FALLS IN THE MONTH

Alberta employment indexed to April 2022, by age group

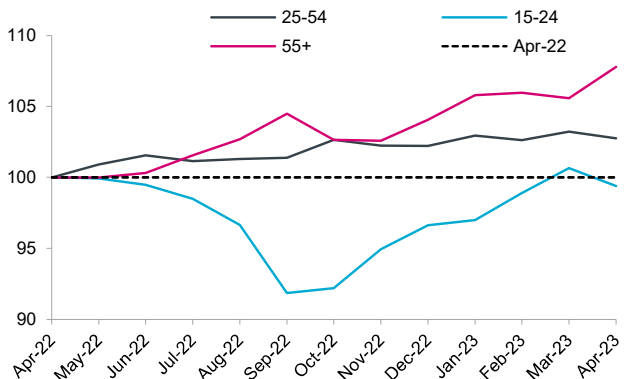


CHART 13: STRONG ANNUAL GROWTH IN ALBERTA

Percentage change in employment since April 2022

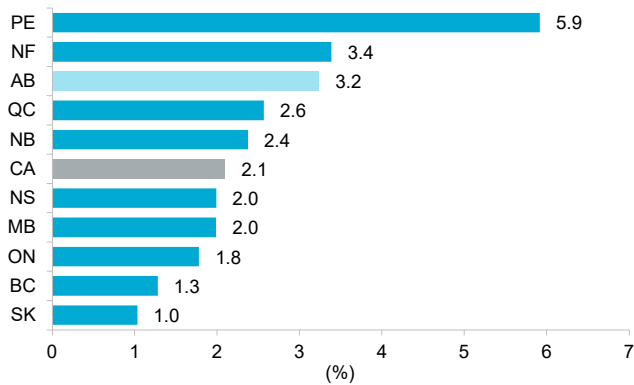


CHART 14: GROWTH IN ALBERTA'S EMPLOYMENT OUTPACES NATIONAL AVERAGE

Year-over-year growth in employment by province

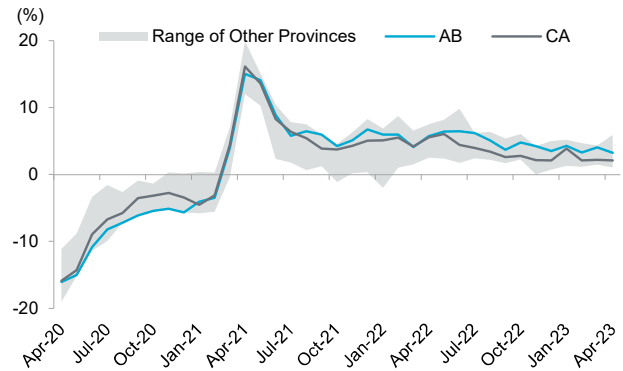


CHART 15: ALBERTA'S UNEMPLOYMENT RATE LOWER THAN 2019 AVERAGE

Unemployment rates by province

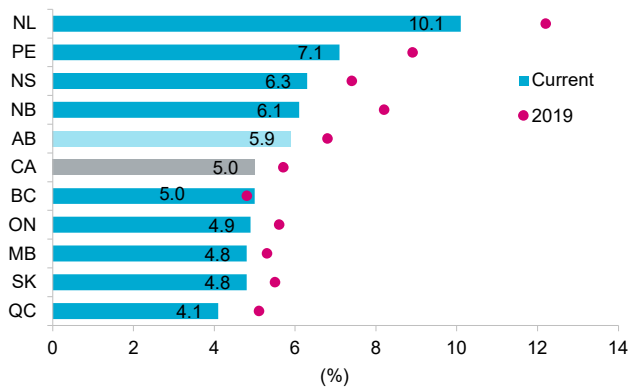


CHART 16: ALBERTA'S UNEMPLOYMENT RATE HIGHER THAN NATIONAL AVERAGE

Unemployment rates by province

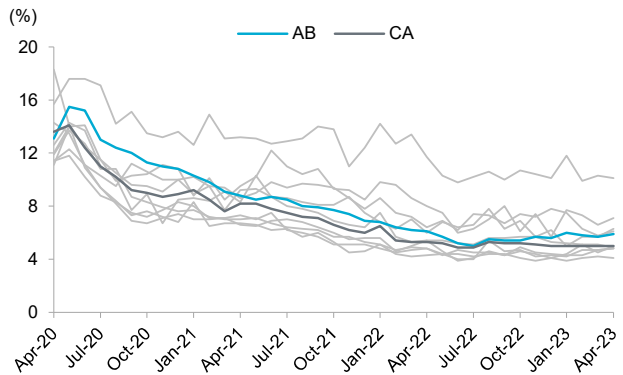


CHART 17: ALBERTA'S EMPLOYMENT RATE DROPS FROM 2019; STILL THE HIGHEST

Employment rates by province

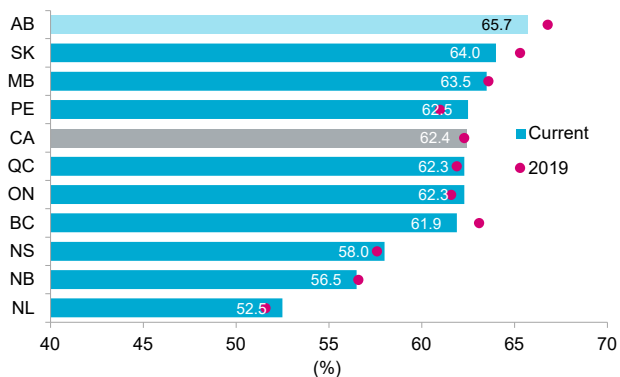
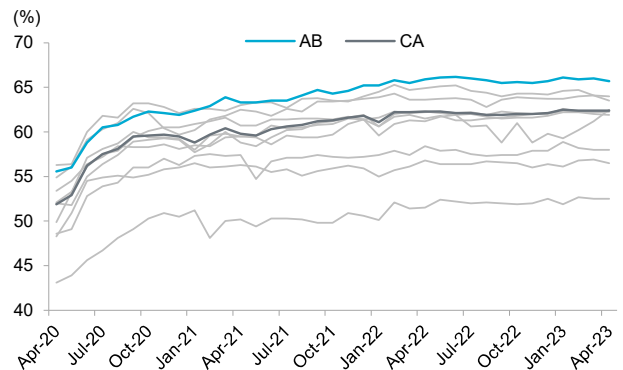


CHART 18: ALBERTA'S EMPLOYMENT RATE EXCEEDS NATIONAL AVERAGE

Employment rates by province



Sources: Unless noted otherwise, all data are seasonally adjusted and taken from Statistics Canada and Haver Analytics. All historical data are subject to revision.