

Labour Market Notes

Solid momentum in labour market

Alberta

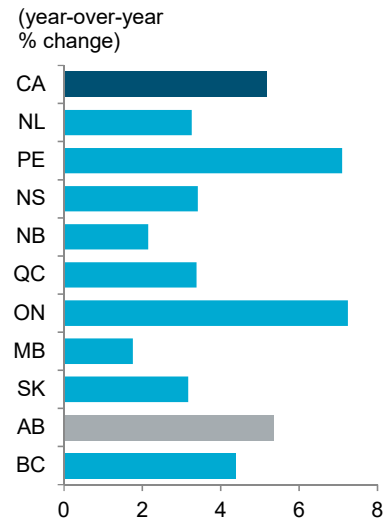
- **Employment marches on.** Employment in the province increased (+15,900 month-over-month or m/m) in April, leading the country in jobs growth.
- **Private sector leads growth.** Full-time positions led employment gains (+9,800 m/m), while part-time jobs also contributed (+6,100 m/m) in April. The majority of these positions were in the private sector (+15,000 m/m).
- **Services sector employment jumps.** Employment in service-producing sectors increased (+17,500 m/m), propelled by gains in wholesale and retail trade (+11,200 m/m), and further supported by health care & social assistance and transportation & warehousing. Some close-contact industries continued to lag, including information & culture and other services, while accommodation & food had a modest increase.
- **Goods sector employment down.** After a large jump in January, goods sector employment waned for the third consecutive month (-1,400 m/m). Broad-based declines outweighed a small uptick in agriculture.
- **Lower unemployment rate and participation rate.** With the employment gains, the unemployment rate dropped to 5.9%. The participation rate declined to 69.2% as the working age population increased faster than the labour force in April.
- **Labour underutilization inches down.** With the increase in jobs, the labour underutilization rate dipped to 13.5%. The number of Albertans who wanted a job but did not look for one declined 8.1% m/m. However, those who were employed but worked zero hours or less than half of their usual hours during the reference week increased 14,600 (+12% m/m) to 141,400.
- **Wages tick up.** The average hourly wage in Alberta increased 0.9% m/m to \$33.25, and was up 1.8% from the same time period a year ago.

Canada

- **National employment moderates.** Nationally, employment increased by 15,300 in April, with growth in five provinces, led by Alberta.
- **Unemployment rate falls.** With the employment gains, the national unemployment rate fell to 5.2% in April, the lowest rate on record since comparable data became available in 1976.
- **Wages grow.** The national average hourly wage rate edged up to \$31.06 (+0.5% m/m), up 3.3% compared to a year ago.

EMPLOYMENT GROWTH BY PROVINCE

April 2022 vs. April 2021



Sources: Statistics Canada, Haver Analytics

ALBERTA LABOUR MARKET INDICATORS

Indicator	Latest*
Employment	2,338,100
month-over-month change	15,900
year-over-year % change	5.3%
Alberta Unemployment Rate (UR)	5.9%
Edmonton UR**	6.9%
Calgary UR**	7.2%
Participation Rate	69.2%
Average Weekly Earnings (AWE)	\$1,244.49
year-over-year % change	1.0%
Average Hourly Wage	\$33.25
year-over-year % change	1.8%
Job Vacancy Rate	4.5%

Sources: Statistics Canada, Haver Analytics

* All data is from the April 2022 Labour Force Survey, except AWE which is from the February 2022 Survey of Employment, Payrolls and Hours, and the Job Vacancy Rate which is from the February 2022 Job Vacancy and Wage Survey.

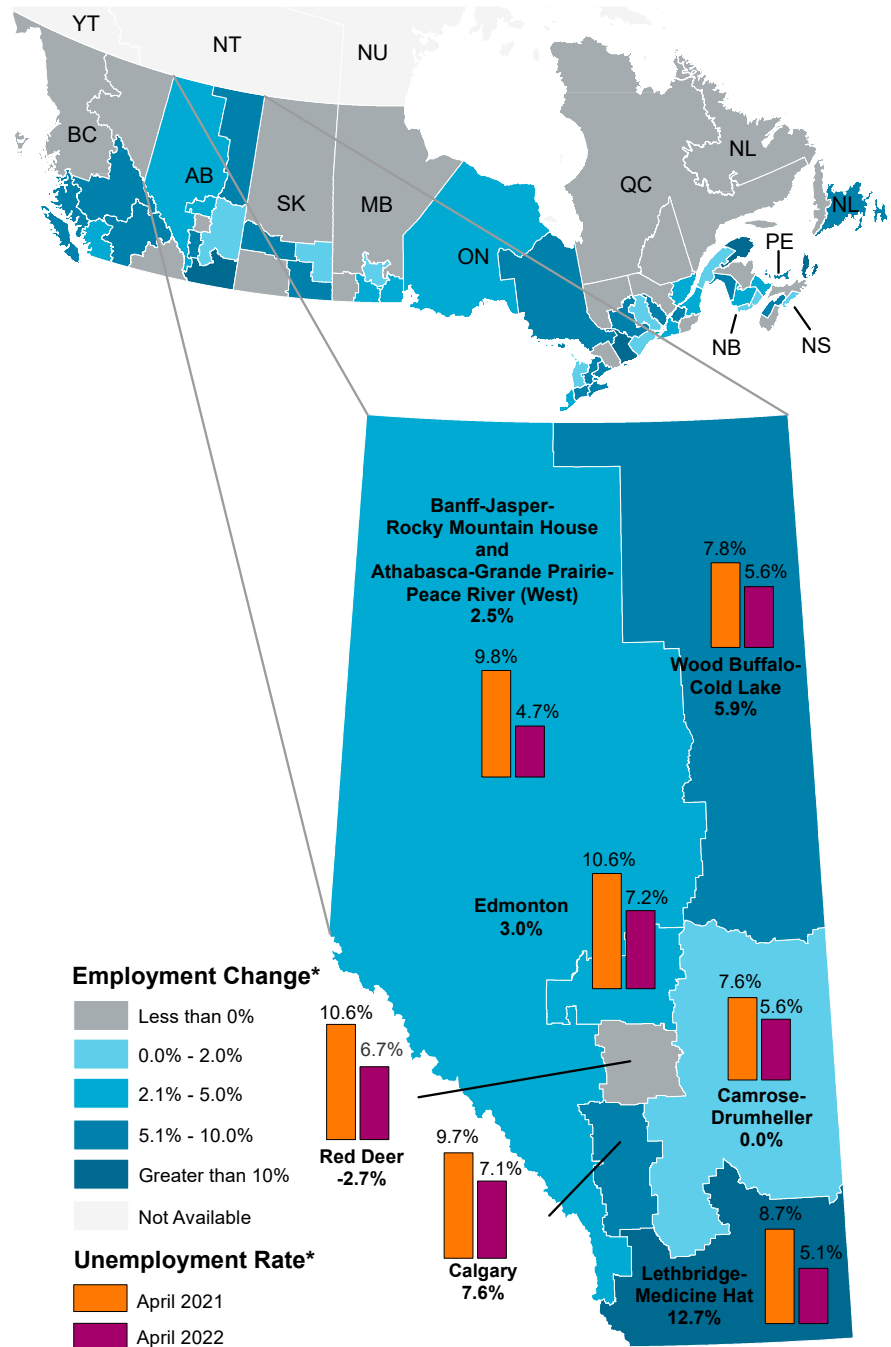
** This indicator is calculated as a three month moving average and is seasonally adjusted.

Regional labour market indicators

	2020	2021	2022 YTD
Alberta			
Population	1.5	1.0	1.4
Labour Force	-1.9	2.0	1.3
Employment	-6.6	5.1	5.2
Unemployment Rate	11.4	8.7	7.0
Calgary			
Population	1.8	1.3	1.6
Labour Force	-0.5	0.4	2.3
Employment	-5.3	3.3	5.4
Unemployment Rate	11.7	9.1	7.5
Edmonton			
Population	1.9	1.4	1.7
Labour Force	-2.9	5.0	0.4
Employment	-7.7	8.7	5.0
Unemployment Rate	12.0	8.9	7.1
West			
Population	0.4	0.1	0.5
Labour Force	-3.4	1.4	-0.6
Employment	-9.2	4.8	4.6
Unemployment Rate	11.1	8.1	5.1
Lethbridge - Medicine Hat			
Population	0.9	0.3	0.6
Labour Force	-2.8	-0.2	2.9
Employment	-5.4	1.7	7.5
Unemployment Rate	8.6	6.9	6.2
Red Deer			
Population	1.2	0.8	1.2
Labour Force	-1.9	2.2	-1.4
Employment	-6.7	5.1	1.8
Unemployment Rate	11.6	9.0	6.9
Camrose - Drumheller			
Population	0.1	-0.4	-0.1
Labour Force	0.5	-0.7	3.7
Employment	-4.0	2.0	7.2
Unemployment Rate	10.7	8.4	5.9
Wood Buffalo - Cold Lake			
Population	0.0	-0.2	0.2
Labour Force	-3.7	-1.3	2.7
Employment	-7.6	1.3	5.4
Unemployment Rate	9.5	7.1	6.5

EMPLOYMENT GROWTH BY ECONOMIC REGION

Per cent change in year-over-year employment



*Based on three-month moving averages.

Sources: Statistics Canada, Haver Analytics
All numbers are percent growth, except unemployment rates.

Contact Ceilidh Ballantyne at TBF.ERFPublications@gov.ab.ca
Have a question? Send us an [email](#)

CHART 1: LARGE GAINS IN PRIVATE-SECTOR EMPLOYMENT

Monthly change in employment

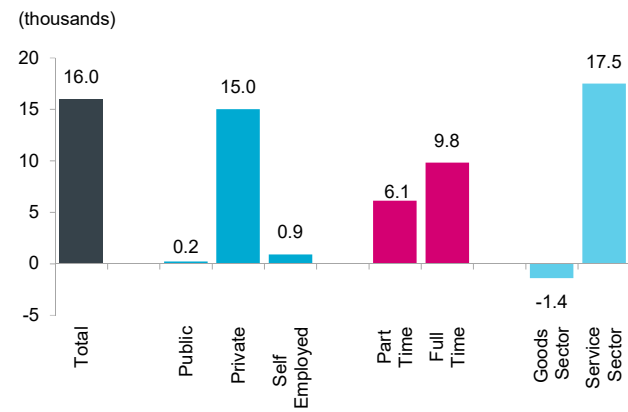


CHART 2: UNEMPLOYMENT DECLINES, NOW LOWER THAN PRE-COVID LEVEL

Number of employed and unemployed

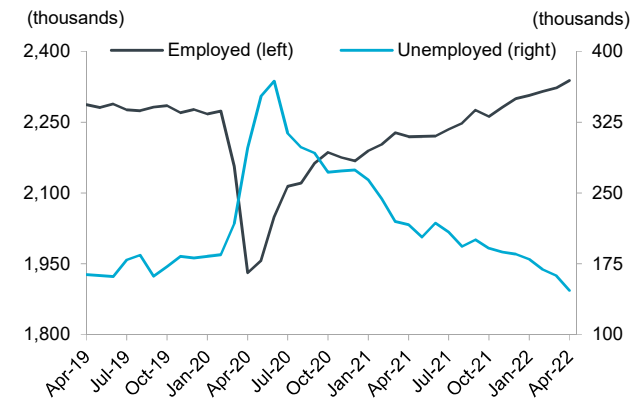


CHART 3: LABOUR FORCE GROWTH ACCOMPANIED BY DECLINE IN UNEMPLOYMENT RATE

Monthly change in labour market indicators, April 2022

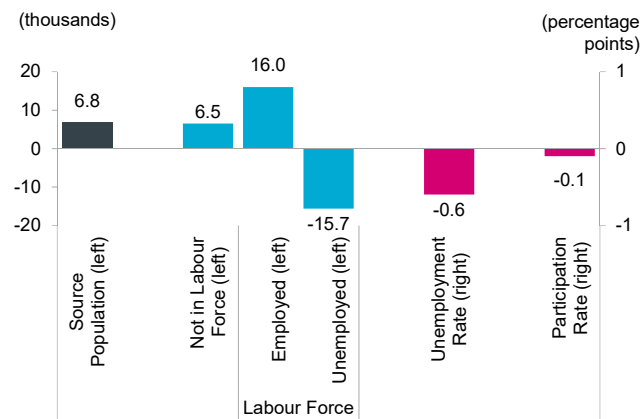


CHART 4: LABOUR FORCE PARTICIPATION RATE DECREASES, REMAINS BELOW PRE-COVID LEVELS

Participation rate and year-over-year growth in labour force

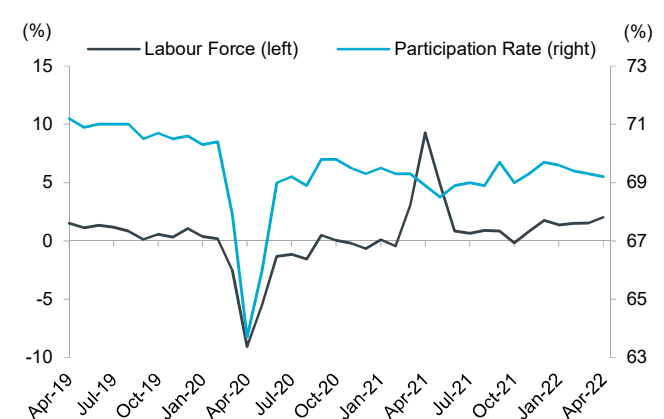


CHART 5: HOURLY WAGE RISES IN APRIL, AND IS UP FROM LAST YEAR

Average hourly wage and y/y growth, non-seasonally adj

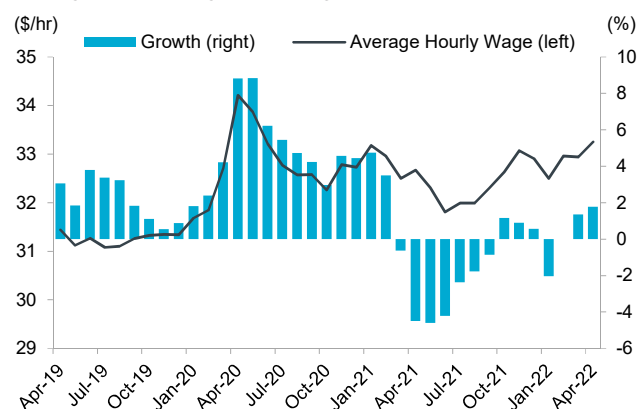


CHART 6: LABOUR UNDERUTILIZATION DIPS

Unemployment rate and labour underutilization rate

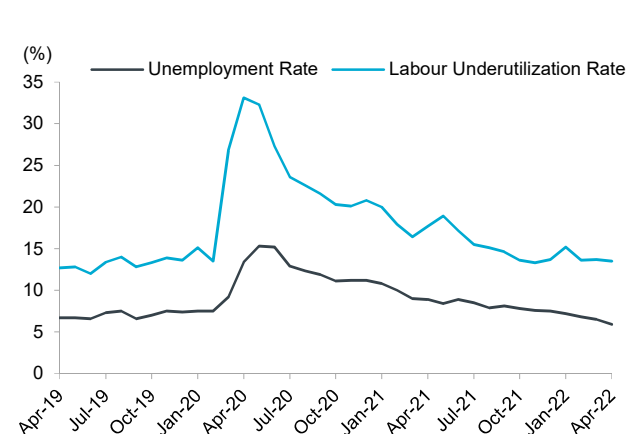


CHART 7: EMPLOYMENT ABOVE PRE-PANDEMIC LEVEL, LED BY SERVICE SECTOR

Change in employment since Feb 2020

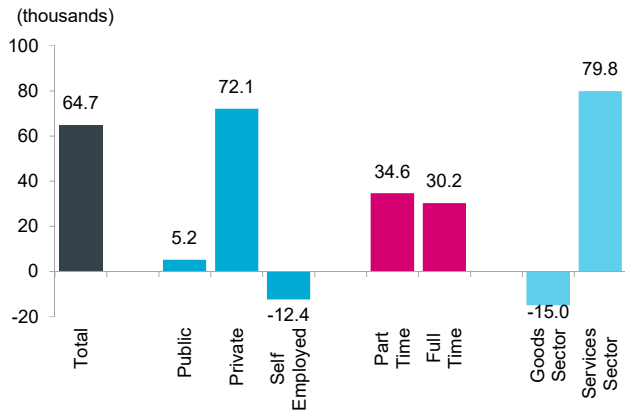


CHART 8: JOB LOSSES CONCENTRATED IN INDUSTRIES DIRECTLY IMPACTED BY PUBLIC HEALTH MEASURES

Change in employment since Feb 2020

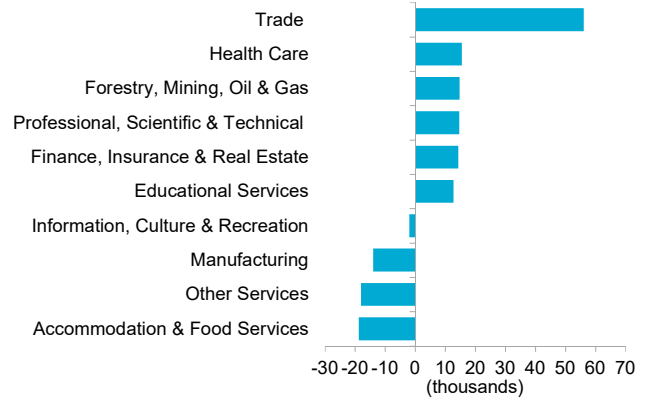


CHART 9: EMPLOYMENT IN SERVICES SECTOR DRIVING RECOVERY

Alberta employment indexed to 2020 peak, by sector

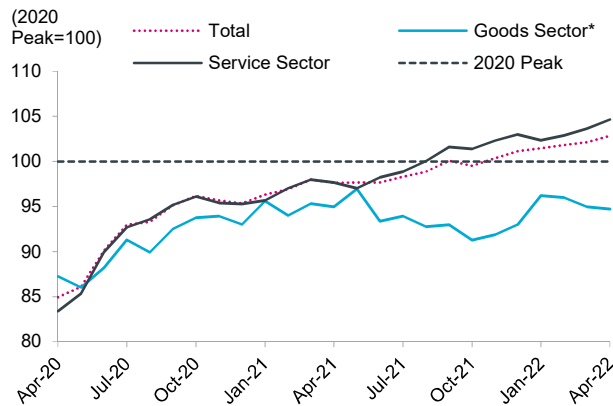


CHART 10: GAINS IN FULL-TIME AND PART-TIME EMPLOYMENT

Alberta employment indexed to Feb 2020, by type

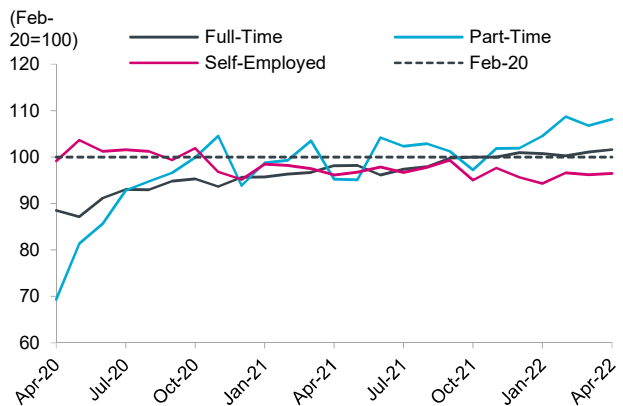


CHART 11: EMPLOYMENT RECOVERING OUTSIDE MAJOR URBAN CENTRES

3-month average employment indexed to Feb 2020, by region

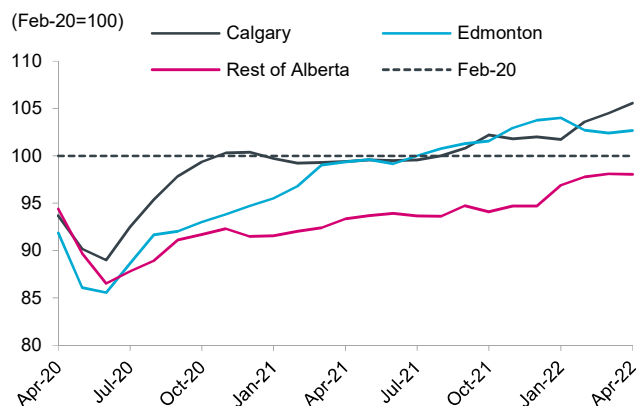


CHART 12: EMPLOYMENT RECOVERY LED BY CORE AGE AND YOUTH; WORKERS 55+ LAGGING BEHIND

Alberta employment indexed to Feb 2020, by age group

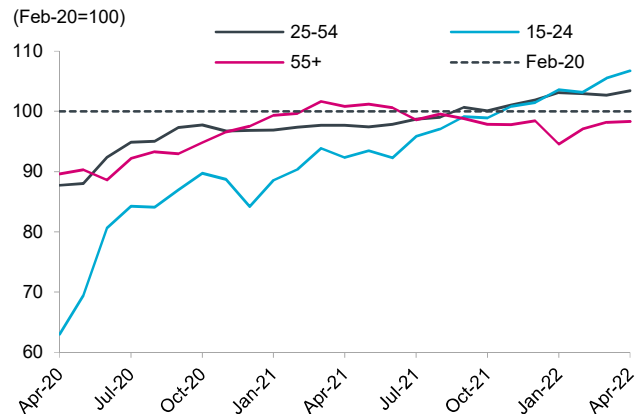


CHART 13: ALBERTA'S EMPLOYMENT ABOVE PRE-PANDEMIC LEVEL

Percentage change in employment since Feb 2020

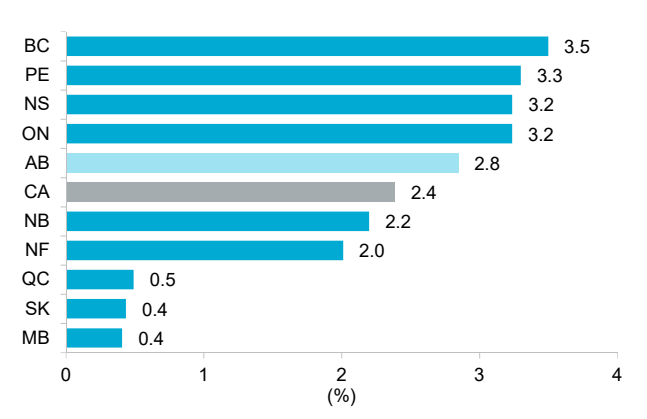


CHART 14: GROWTH IN ALBERTA'S EMPLOYMENT IN LINE WITH NATIONAL AVERAGE

Year-over-year growth in employment by province

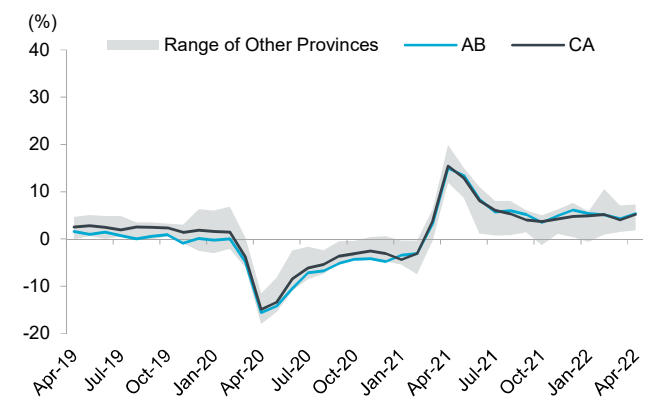


CHART 15: ALBERTA'S UNEMPLOYMENT RATE LOWER THAN 2019 AVERAGE

Unemployment rates by province

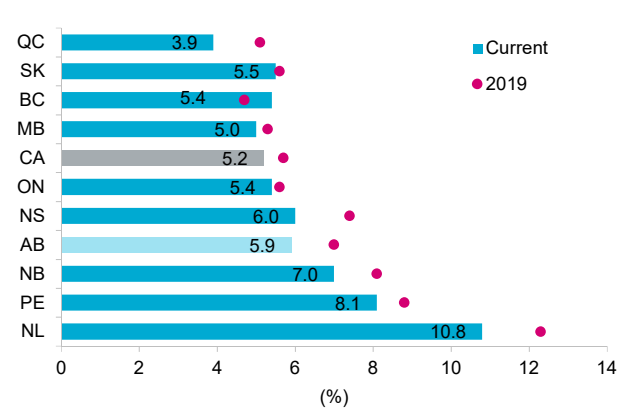


CHART 16: ALBERTA'S UNEMPLOYMENT RATE ABOVE NATIONAL AVERAGE SINCE THE 2015-16 RECESSION

Unemployment rates by province

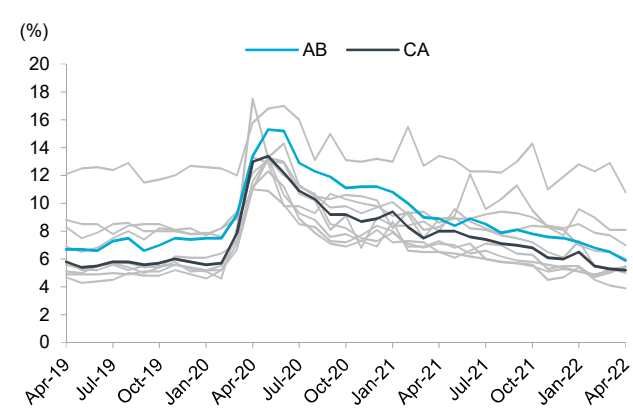


CHART 17: ALBERTA'S EMPLOYMENT RATE DROPS FROM 2019; STILL THE HIGHEST

Employment rates by province

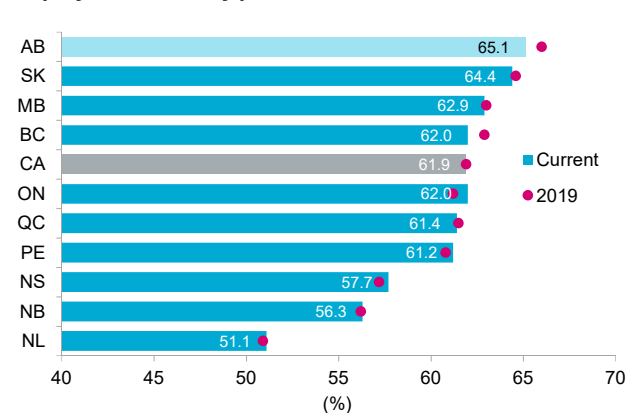
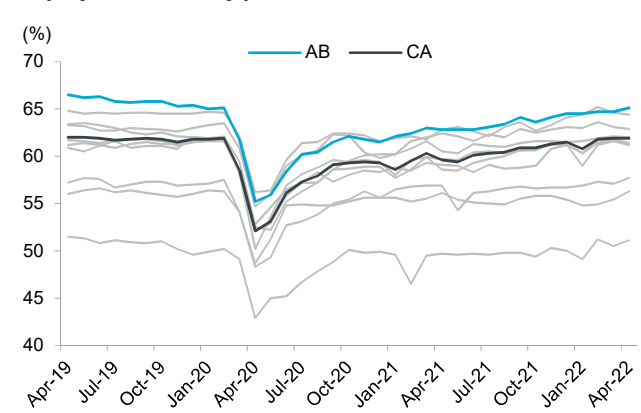


CHART 18: ALBERTA'S EMPLOYMENT RATE EXCEEDS NATIONAL AVERAGE

Employment rates by province



Sources: Unless noted otherwise, all data are seasonally adjusted and taken from Statistics Canada and Haver Analytics. All historical data are subject to revision.

