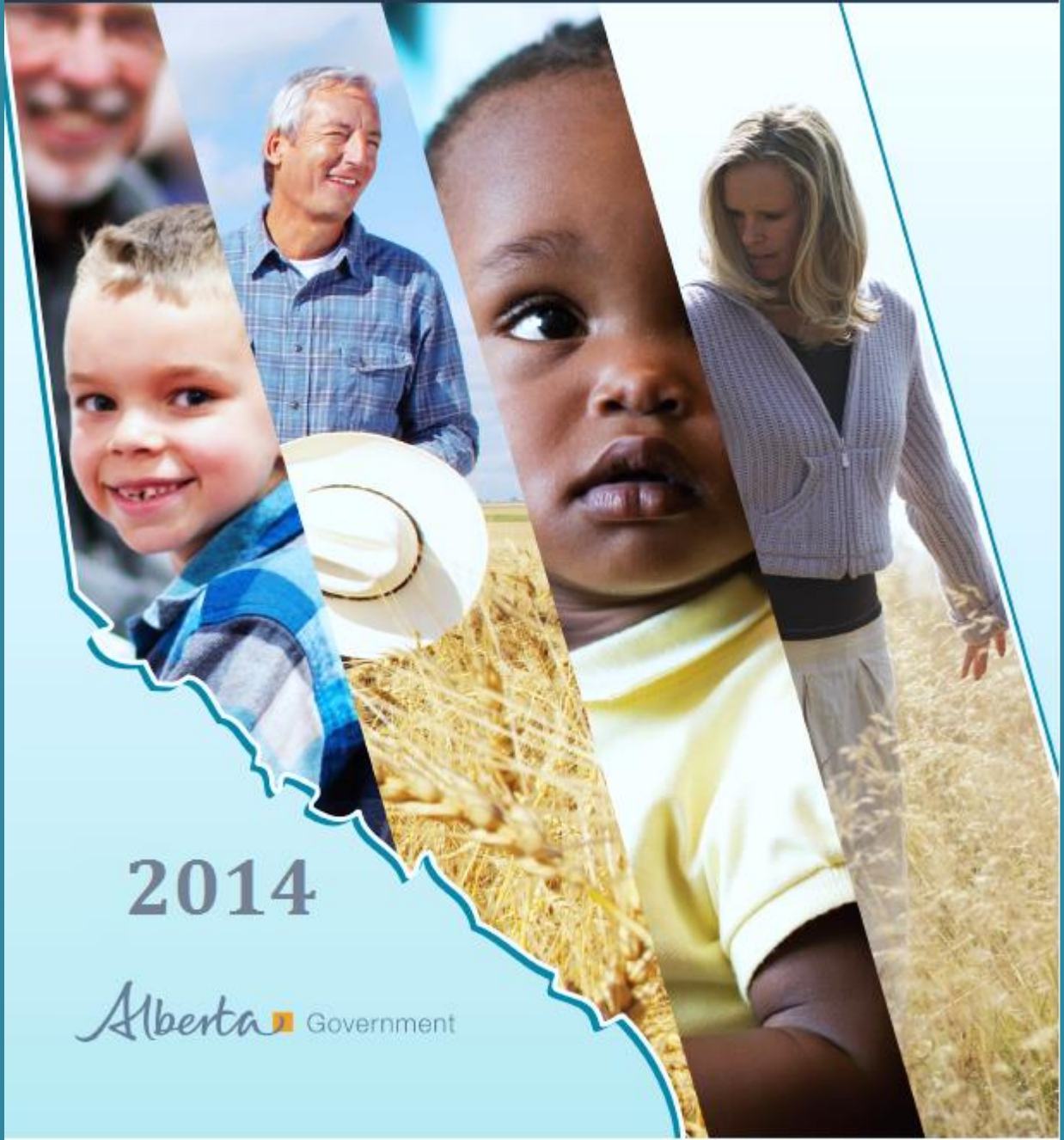


Alberta Vital Statistics

Annual Review



2014

Alberta  Government

Alberta Vital Statistics Annual Review: 2014

Created by: Service Alberta, Vital Statistics.
July 2016

For more information about this document, contact:

Vital Statistics, Service Alberta
3rd Floor, John E. Brownlee Building
10365 – 97 Street
Edmonton, Alberta T5J 3W7

E-mail: vs@gov.ab.ca

© Government of Alberta, 2016.

This document is made available under the Open Government Licence – Alberta
(<http://open.alberta.ca/licence>).

This document is available online at: <http://open.alberta.ca/publications/1485-3809>

ISSN 1485-3809 (print)
ISSN 2371-2074 (online)

Introduction

I am pleased to present the Alberta Vital Statistics Review for 2014. This publication summarizes information on all of the vital events that took place in Alberta, including live births, stillbirths, marriages, and deaths during the 2014 calendar year.

This report has been prepared in accordance with the *Vital Statistics Act* and serves as a useful resource for the public, researchers and health-care professionals. The data is also made available on the Alberta Open Data Portal (<http://open.alberta.ca>).

All registrations of live births, stillbirths, marriages, and deaths for 2014 were used in the compilation of this annual review. I would like to thank and acknowledge the many people who contributed to the accurate and complete recording of vital events in Alberta. I would also like to thank and acknowledge everyone who participated in compiling and producing this valuable document.



Honourable Stephanie McLean
Minister of Service Alberta and Status of Women

Table of Contents

Vital Statistics Overview	1
1. General Events	2
2. Birth Events	5
2.1 Historical Trend on Births and Birth Rate	7
2.2 Historical Trend on Distribution of Sex	8
2.3 Top 20 Cities, Towns, or Villages with Birth Events	9
2.4 Popular Baby Names	10
2.5 Breakdown by Types of Birth	11
2.6 Breakdown of Live Births by Age of Mother	12
2.7 Breakdown of Live Births by Marital Status of Mother	13
2.8 Average Birth Weight and Gestation Period	15
3. Death Events	16
3.1 Stillbirths	18
3.1.1 Historical Trend of Stillbirths in Alberta	18
3.1.2 Stillbirths by Age of Mother	19
3.1.3 Stillbirths by Marital Status of Mother	21
3.2 Infant Deaths	23
3.2.1 Historical Trend of Infant Deaths in Alberta	23
3.2.2 Leading Causes of Infant Deaths	25
3.3 Other Death Events	26
3.3.1 Distribution of Deaths by Age & Sex (Residents of Alberta)	27
3.3.2 Top 10 Cities, Towns, or Villages with Death Events	29
3.3.3 Leading Causes of Death	30
4. Marriage Events	32
4.1 Historical Trend of Marriages	34
4.2 Top 10 Cities, Towns, or Villages with Marriage Events	37
4.3 Distribution of Marriage Events by Age	38
4.4 Distribution of Marriage Events by Martial Status	40
Glossary of Terms	42

List of Figures

Figure 1: Historical Trend: Birth Rate, Death Rate and Natural Increase Rate	4
Figure 2: Historical Trend of Births and Birth Rate	7
Figure 3: Historical Distribution of Live Births by Sex of Baby	8
Figure 4: Top 20 Cities, Towns, or Villages with Birth Events.....	9
Figure 5: Popular Names of Baby Boys in 2014	10
Figure 6: Popular Names of Baby Girls in 2014	10
Figure 7: Distribution of Total Births	11
Figure 8: Distribution of Multiple Birth Types	11
Figure 9: Live Births by Age of Mother.....	12
Figure 10: Historical trend of Live Birth Distribution by Marital Status of the Mother	13
Figure 11: Live Birth Distribution by Marital Status of the Mother	14
Figure 12: Average Birth Weight by Average Gestation Period.....	15
Figure 13: Historical Trend of Stillbirths and Stillbirth Rate	18
Figure 14: Stillbirths by Age-Groups of Mother	19
Figure 15: Historical Trend of Stillbirth Rate (per 1,000 Live Births) by the Age of the Mother	20
Figure 16: Historical Trend of Stillbirths and Stillbirth Rate by Marital Status of Mother	21
Figure 17: Historical Trend of Stillbirth Rate (per 1,000 Live Births) by the Age of the Mother (Married)	22
Figure 18: Historical Trend of Stillbirth Rate (per 1,000 live births) by the Age of the Mother (Not-Married)	22
Figure 19: Historical Trend of Infant Deaths in Alberta	23
Figure 20: Historical Distribution of Infant Deaths by Age of Infant (Residents of Alberta)	24
Figure 21: Top Causes of Infant Deaths in 2014.....	25
Figure 22: Historical Trend of Deaths and Death Rate in Alberta	26
Figure 23: Historical Trend of Deaths by Sex (Residents of Alberta)	27
Figure 24: Distribution of Death by Age and Sex.....	28
Figure 25: Top 10 Cities, Towns, or Villages with Death Events.....	29
Figure 26: Leading Causes of Death in 2014	30
Figure 27: Historical Trend of the Leading Five Causes of Death.....	31
Figure 28: Historical Trend of Marriages and Marriage Rate	34
Figure 29: Historical Trend of Same Sex Marriages.....	35
Figure 30: Distribution of Marriages over the Year	36
Figure 31: Top 10 Cities, Towns, or Villages with Marriage Events.....	37
Figure 32: Distribution of Ages of the Bride and the Groom (Opposite Sex Marriages)	38
Figure 33: Distribution of Marriages by Age Groupings (Opposite Sex).....	39
Figure 34: Distribution of Marriages by Age Groupings (Same Sex)	39
Figure 35: Marriages by Marital Status of Bride and Groom (Opposite Sex)	40
Figure 36: Marriages by Marital Status of the Spouses (Same Sex)	41

Vital Statistics Overview

Alberta Vital Statistics is responsible for registering all live births, stillbirths, marriages, deaths, legal changes of name and adoptions occurring in the province of Alberta. These events tell a story about our province's past and help us to plan for our future.

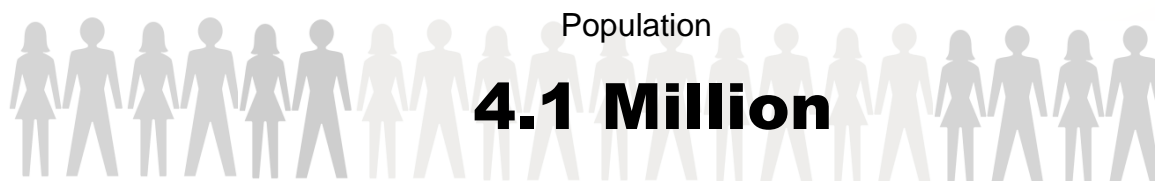
Vital Statistics' mandate is set out in the *Vital Statistics Act*. It directs the government to record all vital events across the province in an accurate, secure and timely manner. The mandate also ensures that access and integrity to vital statistics data is maintained at all times. Vital event information is gathered from a number of sources, including hospital administrators, marriage commissioners, registered clergy and funeral homes.

Vital Statistics was established by the department of Agriculture in 1905. Vital Statistics has been part of Service Alberta for over 20 years and moved to the Open Government Division in 2014. The first birth records ever recorded with Vital Statistics date back to 1853, while marriage and death records date back to 1898.

1. General Events

Vital Statistics at a Glance

Alberta 2014



55,574
Births



23,445
Death

174,870
Total Requests



As of July 1, 2014, the population of Alberta was estimated to be 4,120,897 with a natural increase of 32,129 (6%) from July 1, 2013. The total population increase from the previous year was 2.8%.

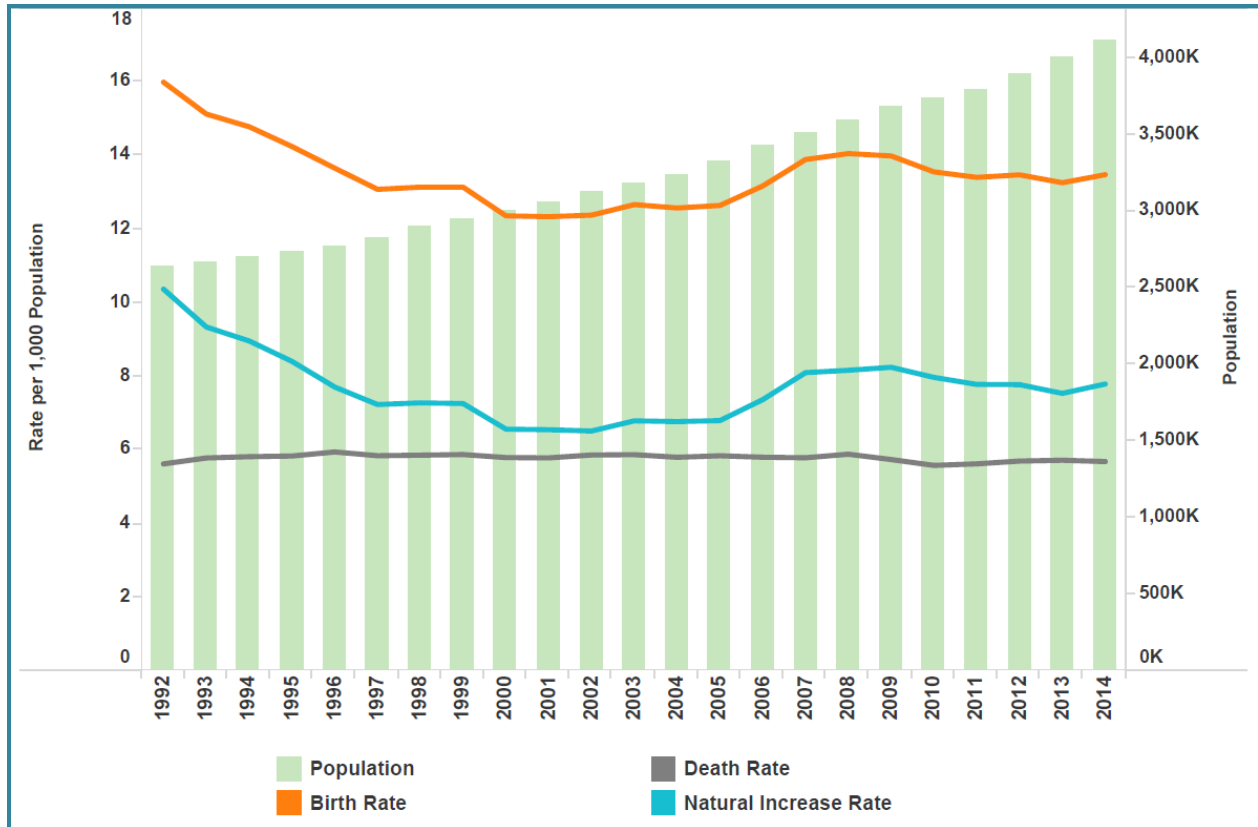


Figure 1: Historical Trend: Birth Rate, Death Rate and Natural Increase Rate

Data Source(s):

1. <http://open.alberta.ca/opendata/alberta-annual-births-totals>
2. <http://open.alberta.ca/opendata/alberta-annual-deaths-totals>
3. <http://open.alberta.ca/opendata/annual-population-estimates-july-1-alberta>

2. Birth Events

[Birth Events Visualizations](#)



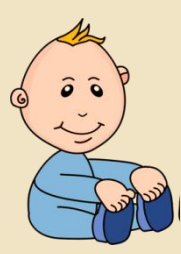
Birth Events

Alberta

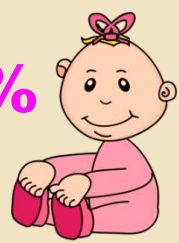
2014

55,574

Live births



51%



49%

Liam
Ethan
Benjamin

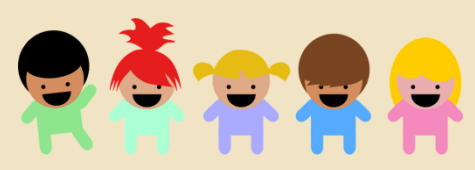


Olivia
Emma
Emily

Most births were to mothers aged

25-34 years

1,807 Multiple births



38.72 weeks

Average gestation time



7.28 lb

Average baby weight

2.1 Historical Trend on Births and Birth Rate

In 2014, there were 55,574 births that occurred in Alberta, a 4% increase from the 53,175 births reported in 2013. The provincial birth rate for 2014 was 13.5 live births per 1,000 population.

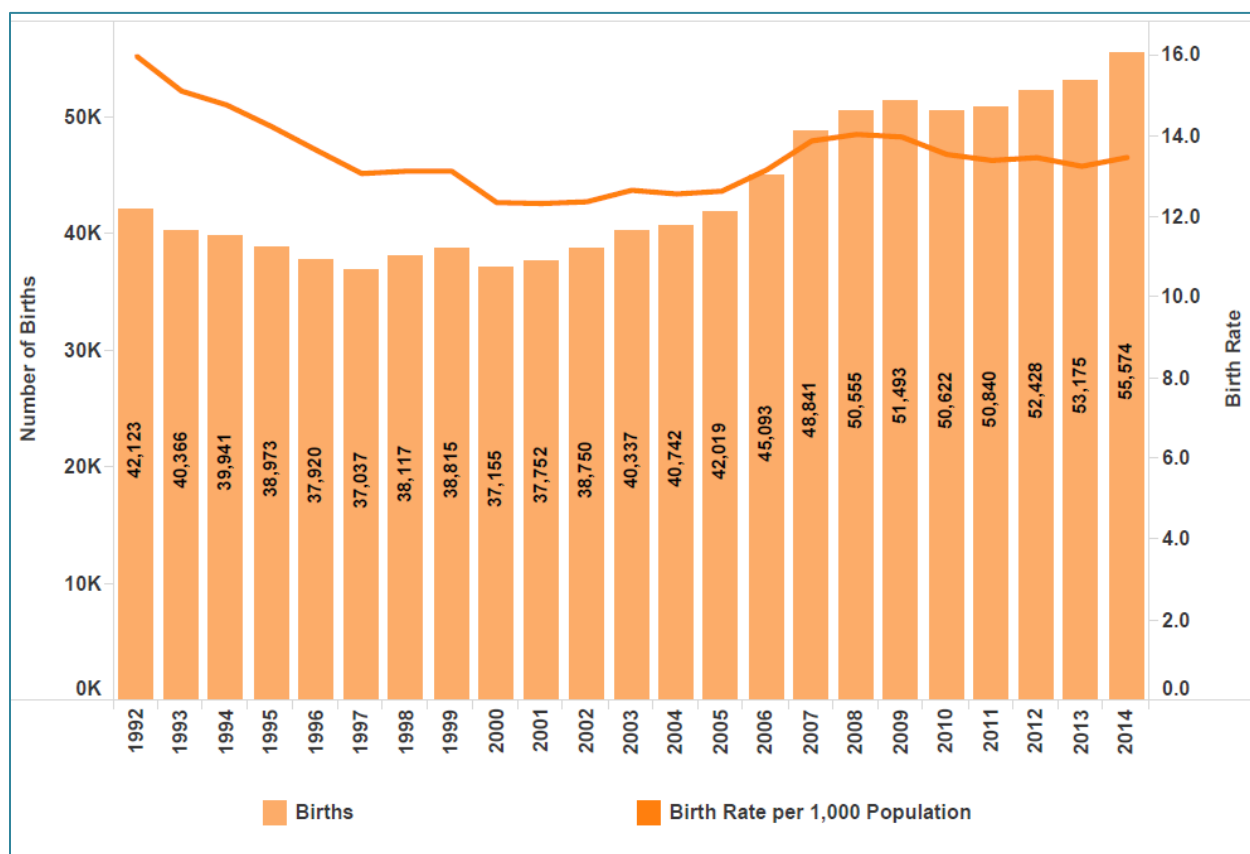


Figure 2: Historical Trend of Births and Birth Rate

Data Source(s):

1. <http://open.alberta.ca/opendata/alberta-annual-births-totals>
2. <http://open.alberta.ca/opendata/annual-population-estimates-july-1-alberta>

2.2 Historical Trend on Distribution of Sex

Of the 55,574 births in Alberta, 51.2% were males (28,434) and 48.8% were females (27,139).

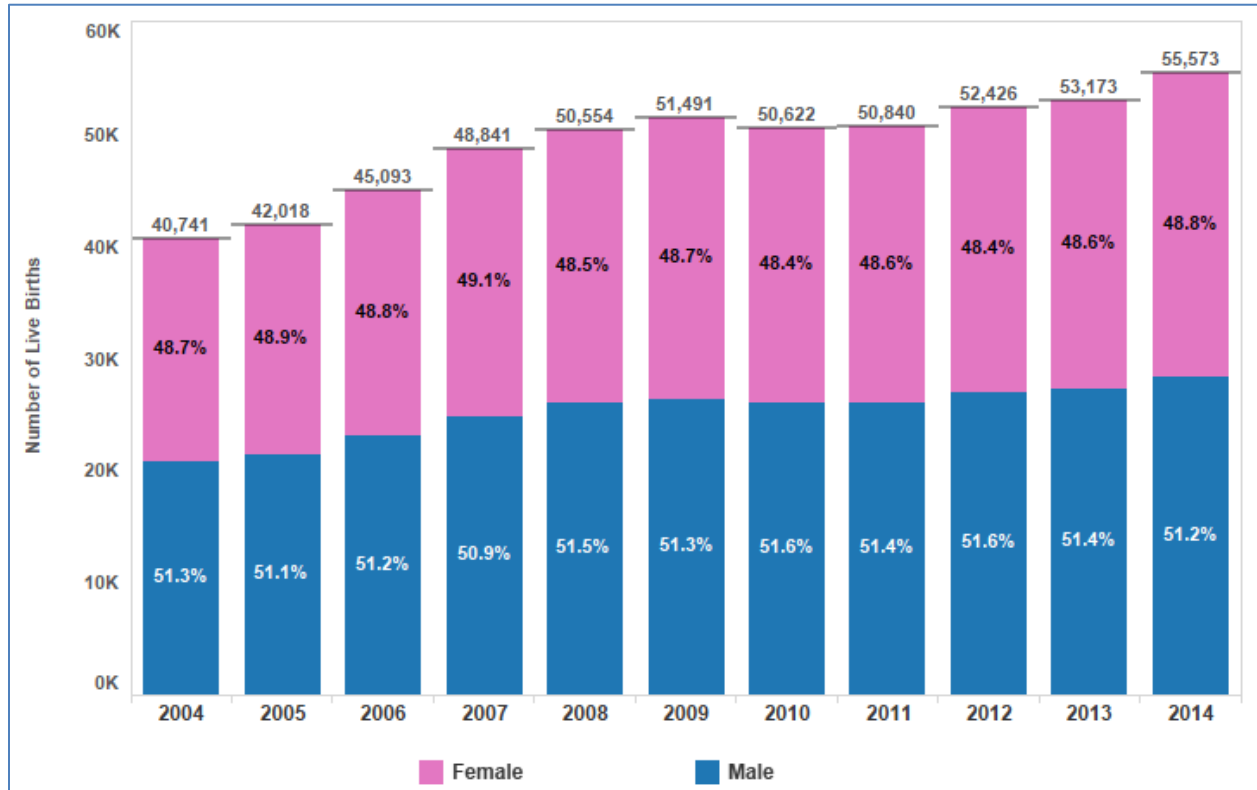


Figure 3: Historical Distribution of Live Births by Sex of Baby

Data Source(s):

1. <http://open.alberta.ca/opendata/male-live-births-birth-weight-by-age-of-mother>
2. <http://open.alberta.ca/opendata/female-live-births-birth-weight-by-age-of-mother>

*The total in the above figures may not add up to the total birth as reflected in Figure 2. The difference is attributed to the cases where sex of the baby was not stated.

2.3 Top 20 Cities, Towns, or Villages with Birth Events

Births in Calgary and Edmonton accounted for over 50% of the total birth events that took place in Alberta in 2014.

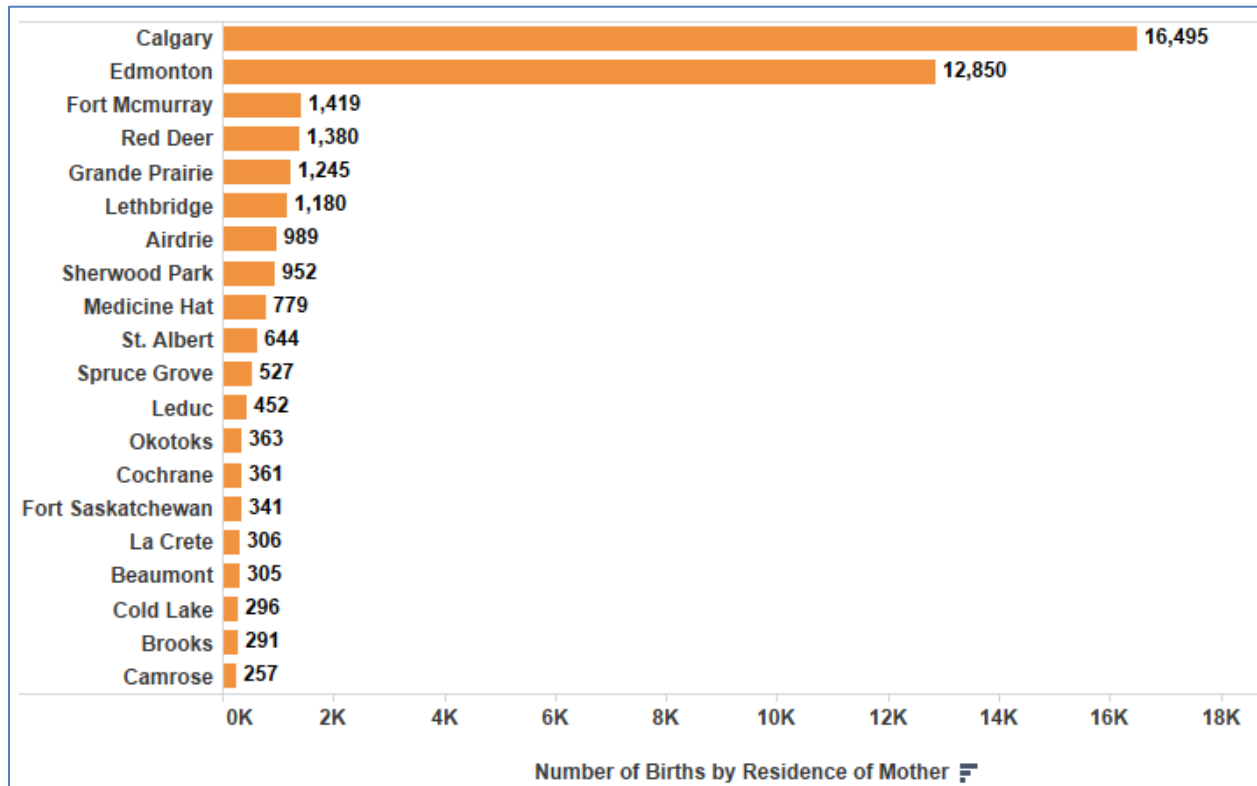


Figure 4: Top 20 Cities, Towns, or Villages with Birth Events

Data Source(s):

1. <http://open.alberta.ca/opendata/births-marriages-and-deaths-by-municipality-and-year>

2.4 Popular Baby Names

Ranking first for four consecutive years, “Liam” was recorded as the most popular name for boys in 2014.



Figure 5: Popular Names of Baby Boys in 2014

Ranking first for two consecutive years, “Olivia” was recorded as the most popular name for girls in 2014.



Figure 6: Popular Names of Baby Girls in 2014

Data Source(s):

1. <http://open.alberta.ca/opendata/frequency-and-ranking-of-baby-names-by-year-and-gender>

2.5 Breakdown by Types of Birth

There were 53,766 (96.8%) single births and 1,807 multiple births (3.1%) in Alberta in 2014. Of the total multiple births, 1,750 births were twins and 57 births were triplets.

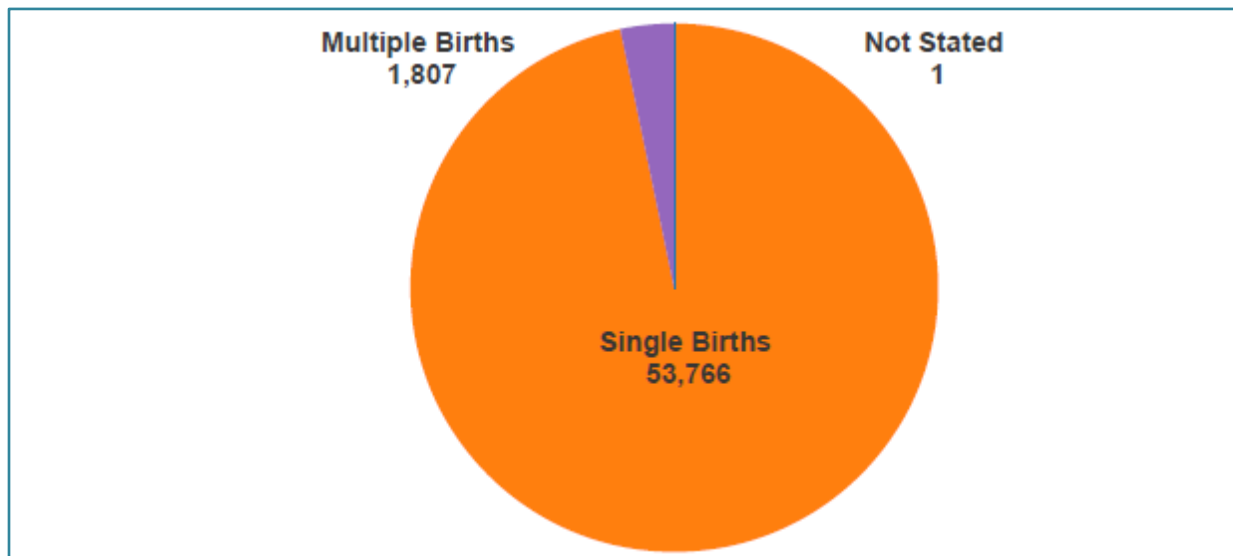


Figure 7: Distribution of Total Births

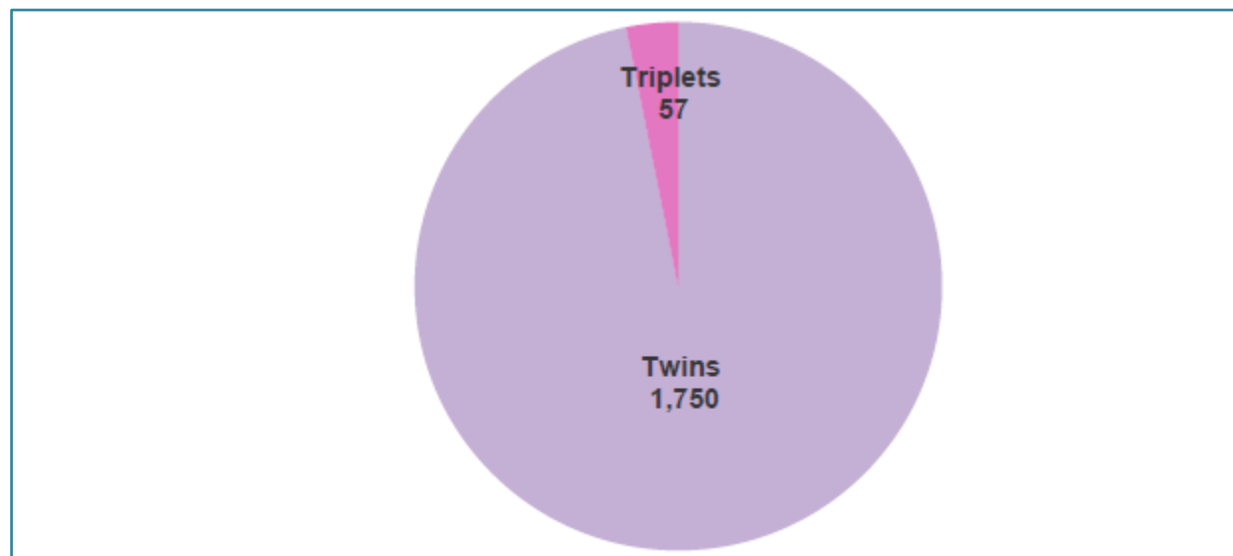


Figure 8: Distribution of Multiple Birth Types

Data Source(s):

1. <http://open.alberta.ca/dataset/live-births-per-type-of-birth-by-age-of-mother>

2.6 Breakdown of Live Births by Age of Mother

In 2014, 65% of live births in Alberta were born to mothers between the ages of 25 and 34 years.

The number of births to mothers under the age of 20 years was 1,624 births in 2014. This represents a 10% decline from the 1,803 births reported in 2013 and 32% decline from the 2,384 births reported in 2009.

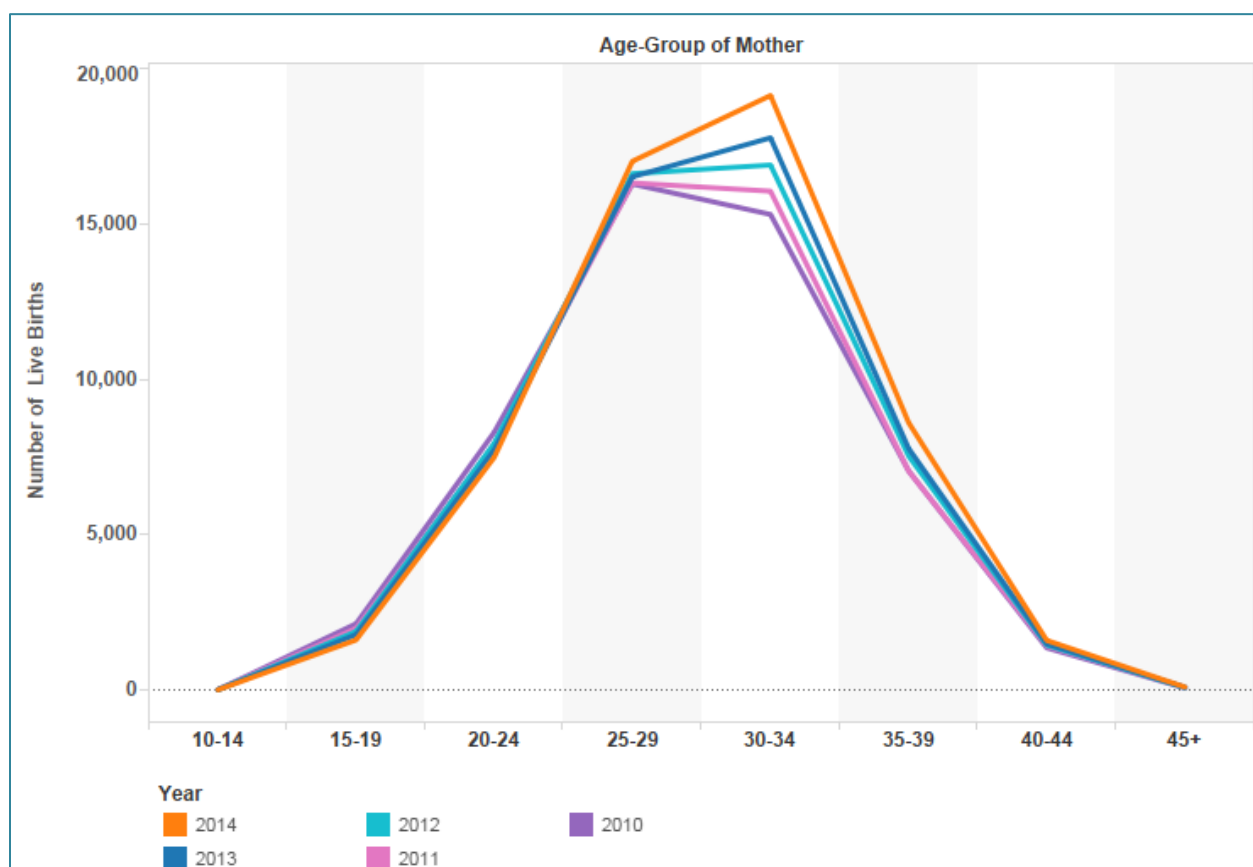


Figure 9: Live Births by Age of Mother

Data Source(s):

1. <http://open.alberta.ca/opendata/live-births-age-of-mother-by-total-live-births>

2.7 Breakdown of Live Births by Marital Status of Mother

In 2014, the distribution of live births was 70.2% for married women and 29.8% for unmarried women. There has been a slight increase in the overall distribution of live births by women who are not married over the last 13 years.

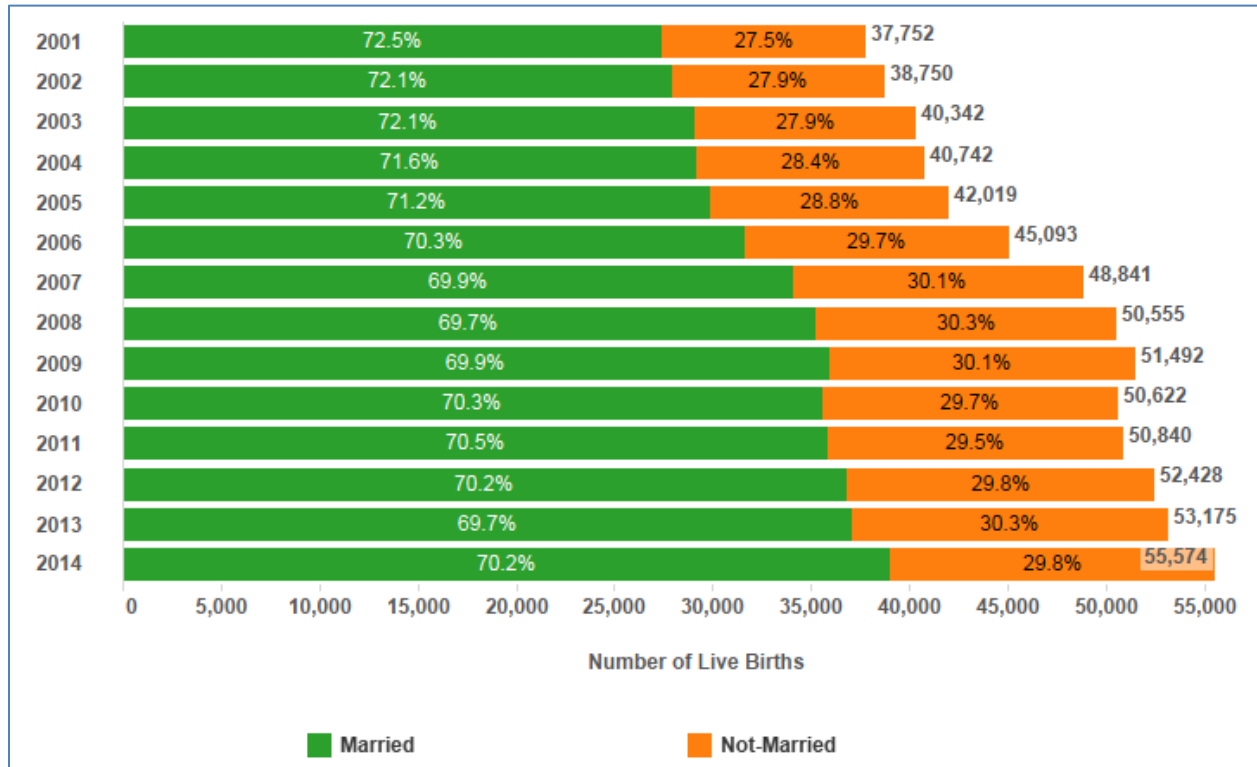


Figure 10: Historical trend of Live Birth Distribution by Marital Status of the Mother

In 2014, most live births by married women were aged 25-34 years. Most live births by unmarried women were aged 20-29 years. Most first births took place to mothers between the ages of 25-29 years.

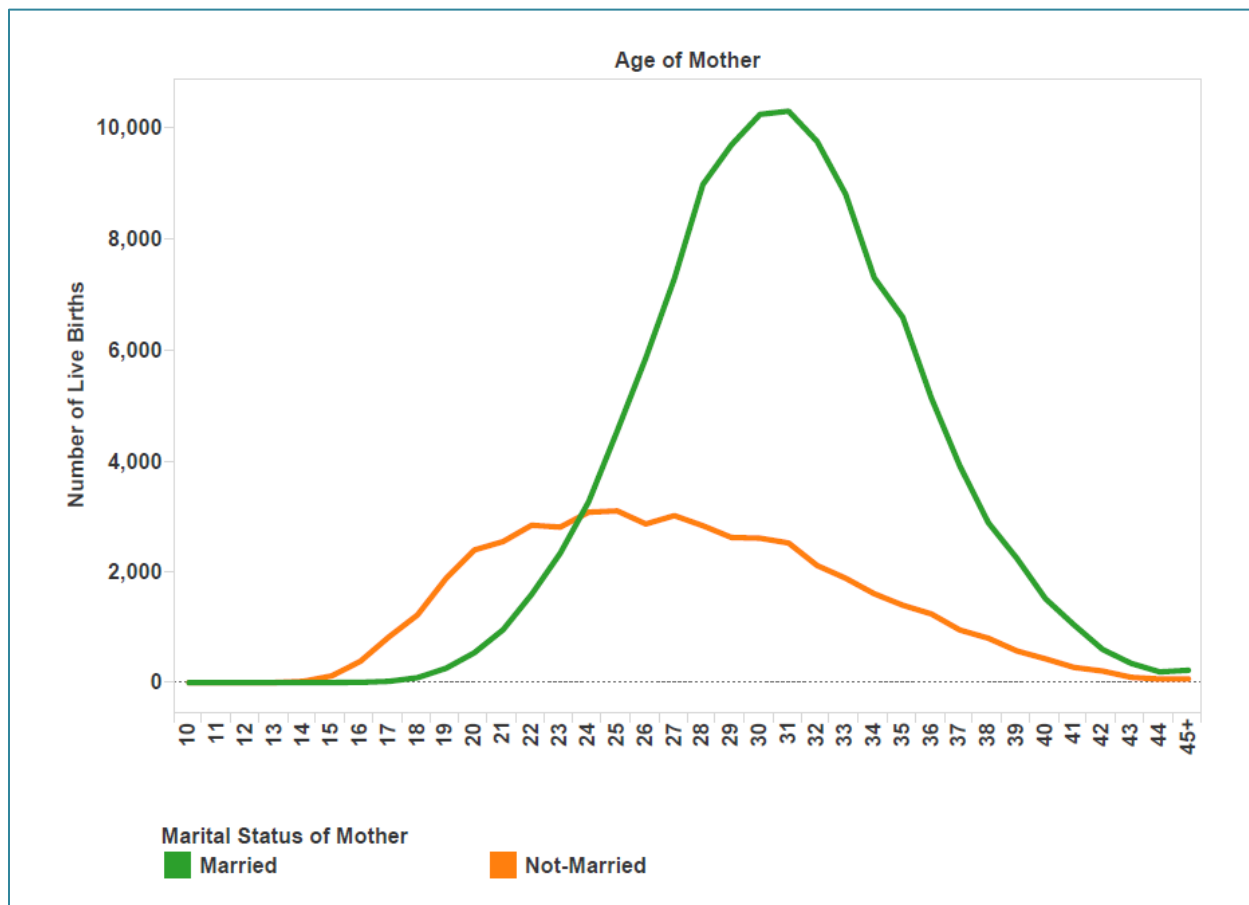


Figure 11: Live Birth Distribution by Marital Status of the Mother

Data Source(s):

1. <http://open.alberta.ca/opendata/live-births-age-of-mother-by-total-live-births>
2. <http://open.alberta.ca/opendata/live-births-to-married-mothers-age-of-mothers-by-total-live-births>
3. <http://open.alberta.ca/opendata/live-births-to-mothers-that-are-not-married-age-of-mother-by-total-live-birth>

2.8 Average Birth Weight and Gestation Period

The average gestation period for babies born in Alberta in 2014 was 38.72 weeks. The average birth weight for babies was 3,303 grams. Over 50% of babies weighed between 3,000 and 3,750 grams.

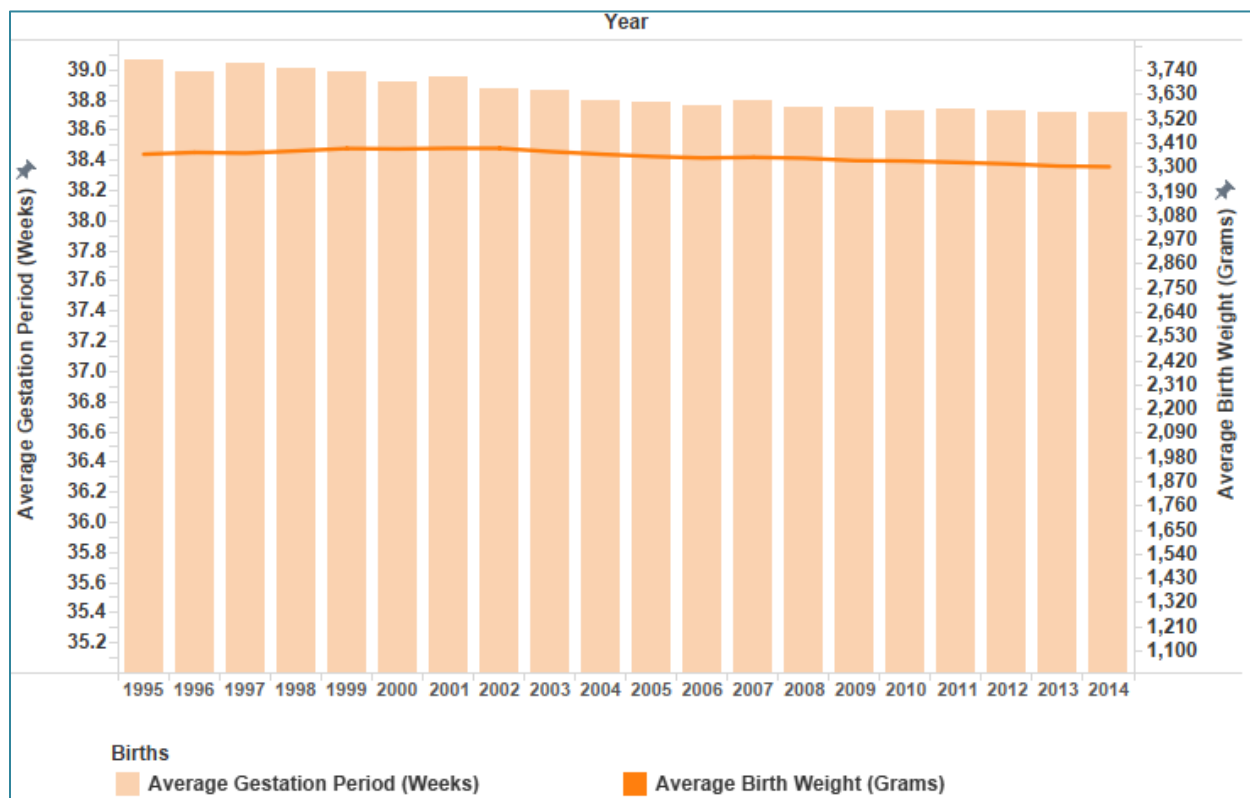


Figure 12: Average Birth Weight by Average Gestation Period

Data Source(s):

1. <http://open.alberta.ca/opendata/average-gestation-age-and-birth-weight>
2. <http://open.alberta.ca/opendata/female-live-births-birth-weight-by-gestation-period>
3. <http://open.alberta.ca/opendata/male-live-births-birth-weight-by-gestation-period>

3. Death Events

[Death Events Visualizations](#)

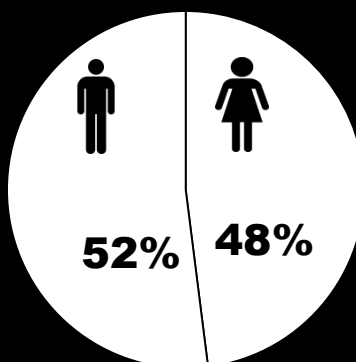


Death Events

Alberta 2014

23,445

Total Deaths



941

All other forms of chronic ischemic heart disease

783

Malignant neoplasms of trachea, bronchus and lung

539

Organic dementia

576

Acute myocardial infarction

480

Other chronic obstructive pulmonary disease



741

716

952

454

457



6.2 stillbirths
for every 1,000 live births



5.1 infant deaths
for every 1,000 live births

3.1 Stillbirths

3.1.1 Historical Trend of Stillbirths in Alberta

There were 343 stillbirths in the province of Alberta in 2014. The provincial stillbirth rate was 6.1 stillbirths per 1,000 total births (live births and stillbirths). The stillbirth rate per 1,000 total births is 1.0 lower than the 2013 rate of 7.1.

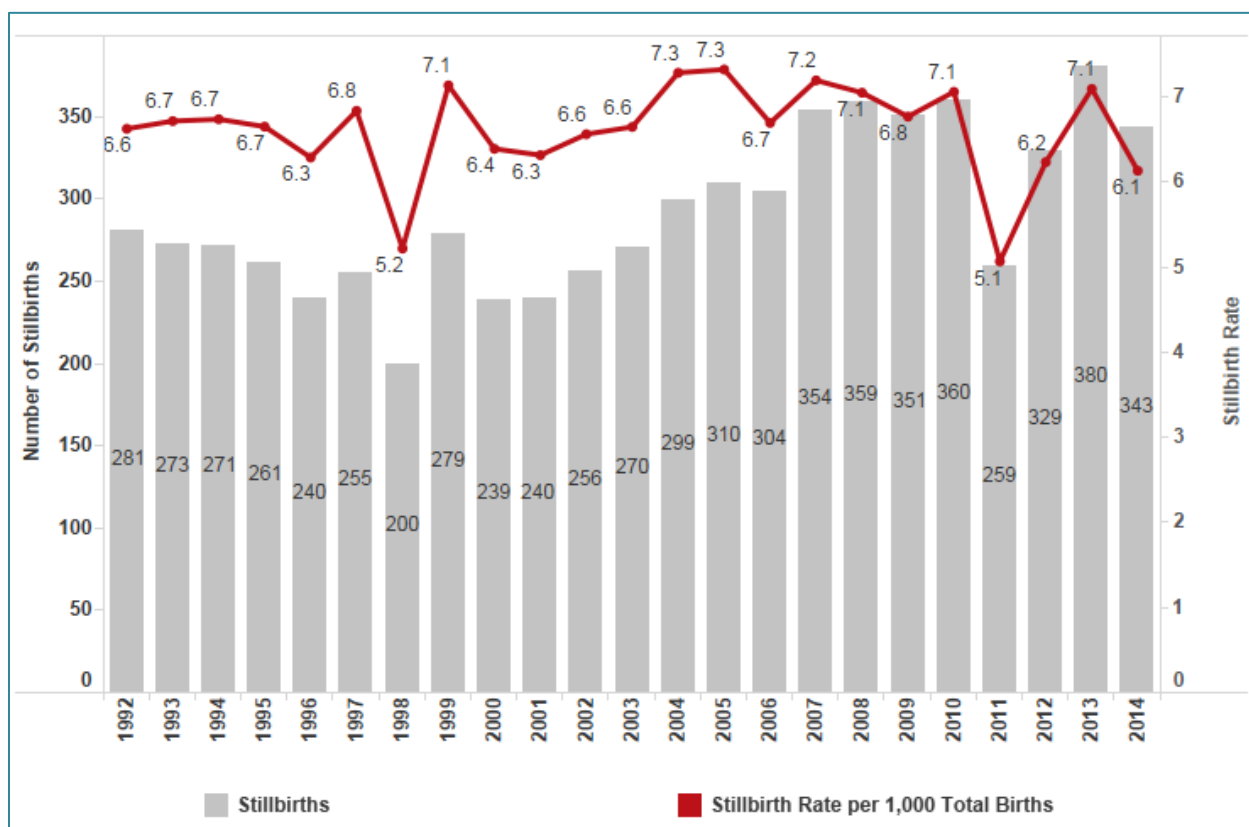


Figure 13: Historical Trend of Stillbirths and Stillbirth Rate

Data Source(s):

1. <http://open.alberta.ca/opendata/alberta-annual-stillbirths-totals>
2. <http://open.alberta.ca/opendata/alberta-annual-births-totals>

3.1.2 Stillbirths by Age of Mother

Mothers under 20 years of age and older than 45 years of age had the highest stillbirth rates, with stillbirths per 1,000 total births at 9.2 and 10.1 respectively.

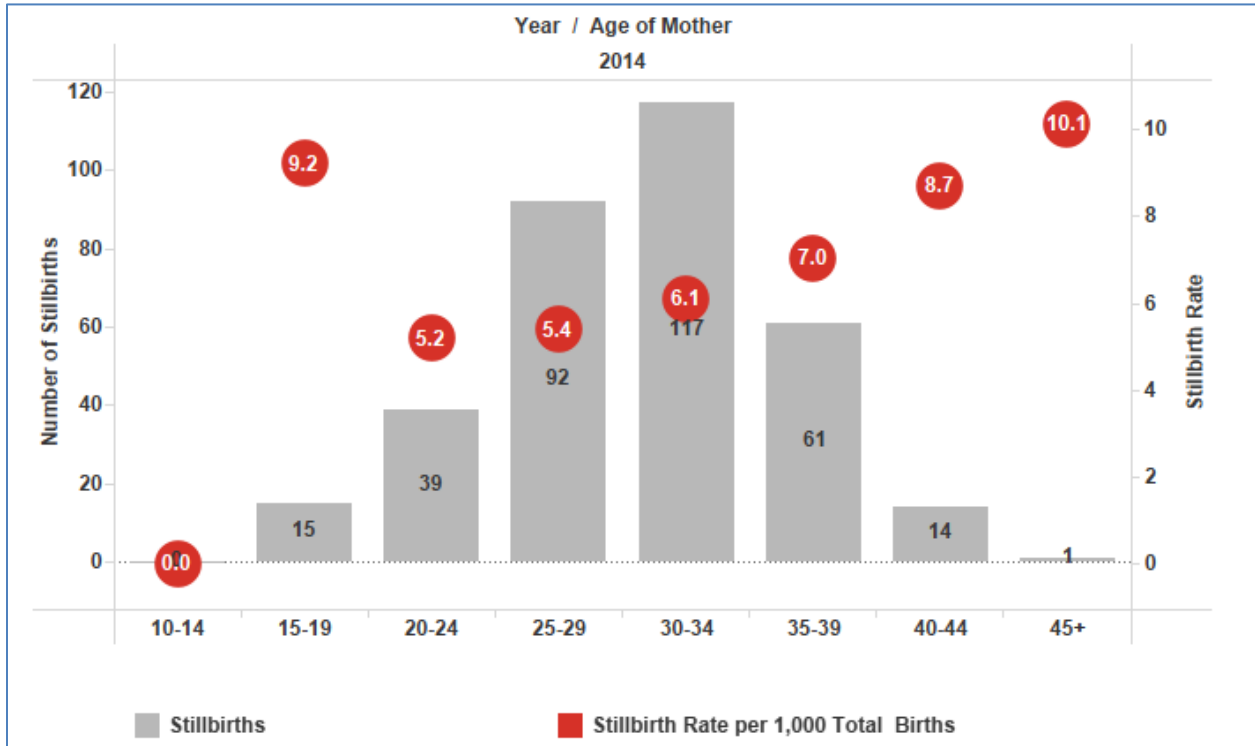


Figure 14: Stillbirths by Age-Groups of Mother

Age of Mother	2004	2005	2006	2007	2008	2009	2010	2011	2012	2013	2014
10-14	0.0	0.0	0.0	35.7	0.0	52.6	0.0	0.0	100.0	0.0	0.0
15-19	10.8	12.2	8.6	7.6	9.0	8.8	9.7	9.0	6.3	10.5	9.2
20-24	7.8	7.3	5.3	7.4	9.1	8.2	6.9	3.7	6.0	6.0	5.2
25-29	6.0	5.3	5.1	5.1	6.2	6.1	6.2	4.2	6.2	6.1	5.4
30-34	7.1	6.9	7.4	6.0	4.9	6.0	6.2	4.8	5.8	7.4	6.1
35-39	7.7	10.7	7.8	12.0	9.4	6.3	8.2	7.6	6.6	6.6	7.0
40-44	12.3	9.7	19.0	17.9	12.6	13.4	16.6	8.4	9.6	17.9	8.7
45+	0.0	0.0	18.9	19.6	0.0	23.3	54.8	0.0	11.9	11.6	10.1

Figure 15: Historical Trend of Stillbirth Rate (per 1,000 Live Births) by the Age of the Mother

Data Source(s):

1. <http://open.alberta.ca/opendata/stillbirths-to-married-mothers-age-of-mother-by-total-live-births>
2. <http://open.alberta.ca/opendata/stillbirths-to-mothers-that-are-not-married-age-of-mother-by-total-live-births>
3. <http://open.alberta.ca/opendata/live-births-age-of-mother-by-total-live-births>

3.1.3 Stillbirths by Marital Status of Mother

The stillbirth rate per 1,000 total births was 7.0 for unmarried women and 5.7 for married women – a 1.3 difference in stillbirth rate between married and unmarried women. The total number of stillbirths for unmarried women was 116 and 223 for married women.

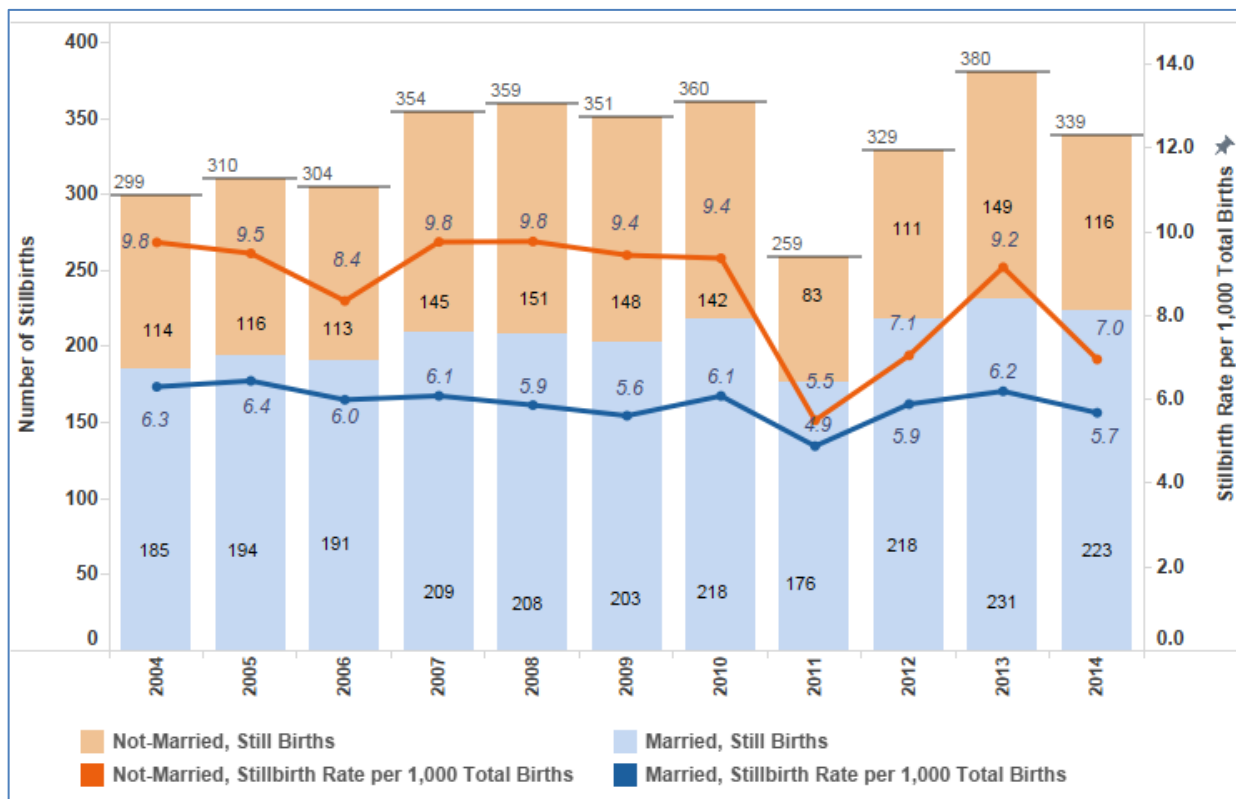


Figure 16: Historical Trend of Stillbirths and Stillbirth Rate by Marital Status of Mother

Age of Mother	2004	2005	2006	2007	2008	2009	2010	2011	2012	2013	2014
15-19	15.5	5.1	9.0	0.0	8.8	9.5	0.0	12.7	6.8	0.0	7.8
20-24	7.2	7.8	3.5	7.4	8.8	4.6	5.1	4.8	5.9	4.0	4.4
25-29	5.6	4.3	4.0	4.5	5.3	5.7	5.2	4.4	5.8	5.2	5.1
30-34	5.8	6.3	7.1	4.7	4.4	5.0	5.7	4.0	5.6	6.6	5.6
35-39	6.7	9.9	7.5	10.1	7.5	6.1	6.8	7.4	5.8	6.0	7.0
40-44	13.6	8.4	18.3	13.7	9.2	12.8	19.0	8.0	10.6	18.5	8.0
45+	0.0	0.0	0.0	0.0	0.0	15.2	37.7	0.0	15.9	15.9	0.0
Total	6.3	6.4	6.0	6.1	5.9	5.6	6.1	4.9	5.9	6.2	5.7

Figure 17: Historical Trend of Stillbirth Rate (per 1,000 Live Births) by the Age of the Mother (Married)

Age of Mother	2004	2005	2006	2007	2008	2009	2010	2011	2012	2013	2014
15-19	10.3	12.9	8.5	8.3	9.0	8.7	10.7	8.7	6.3	11.4	9.3
20-24	8.4	6.8	6.7	7.3	9.4	10.7	8.3	2.8	6.1	7.3	5.6
25-29	7.8	9.0	8.4	6.9	8.6	7.1	8.8	3.7	7.4	8.6	6.2
30-34	14.9	10.3	9.3	13.8	7.8	11.4	8.4	8.7	7.0	10.9	8.0
35-39	13.6	15.1	9.5	22.4	19.7	7.3	15.1	8.7	10.2	9.2	7.2
40-44	5.8	15.6	22.3	36.2	27.8	15.4	7.3	9.9	6.1	16.0	10.9
45+	0.0	0.0	71.4	83.3	0.0	52.6	100.0	0.0	0.0	0.0	41.7
Total	9.8	9.5	8.4	9.8	9.8	9.4	9.4	5.5	7.1	9.2	7.0

Figure 18: Historical Trend of Stillbirth Rate (per 1,000 live births) by the Age of the Mother (Not-Married)

Data Source(s):

1. <http://open.alberta.ca/opendata/stillbirths-to-married-mothers-age-of-mother-by-total-live-births>
2. <http://open.alberta.ca/opendata/stillbirths-to-mothers-that-are-not-married-age-of-mother-by-total-live-births>
3. <http://open.alberta.ca/opendata/live-births-age-of-mother-by-total-live-births>
4. <http://open.alberta.ca/opendata/stillbirths-age-of-mother-by-total-live-births>

*The stillbirths in the above figures may not add up to the total still births as reflected in Figure 13. The difference is attributed to the cases where marital status was unknown.

3.2 Infant Deaths

3.2.1 Historical Trend of Infant Deaths in Alberta

In 2014, there were 283 infant deaths recorded in the province. Of these 283 infant deaths, 258 were to residents of Alberta.

Over 63% of the infant deaths were less than 7 days after birth; 10% occurred between 7 to 28 days after birth; and 26% occurred between 29 to 365 days after birth.

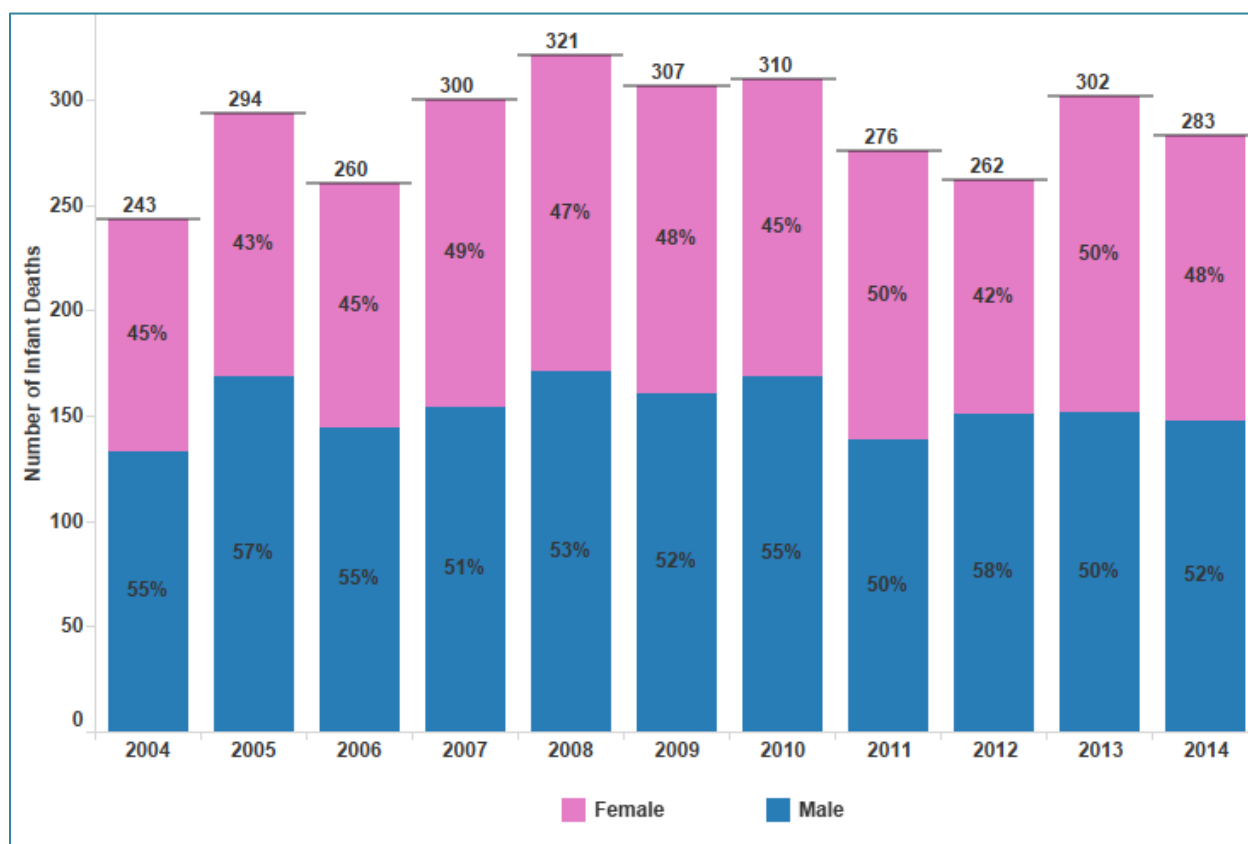


Figure 19: Historical Trend of Infant Deaths in Alberta

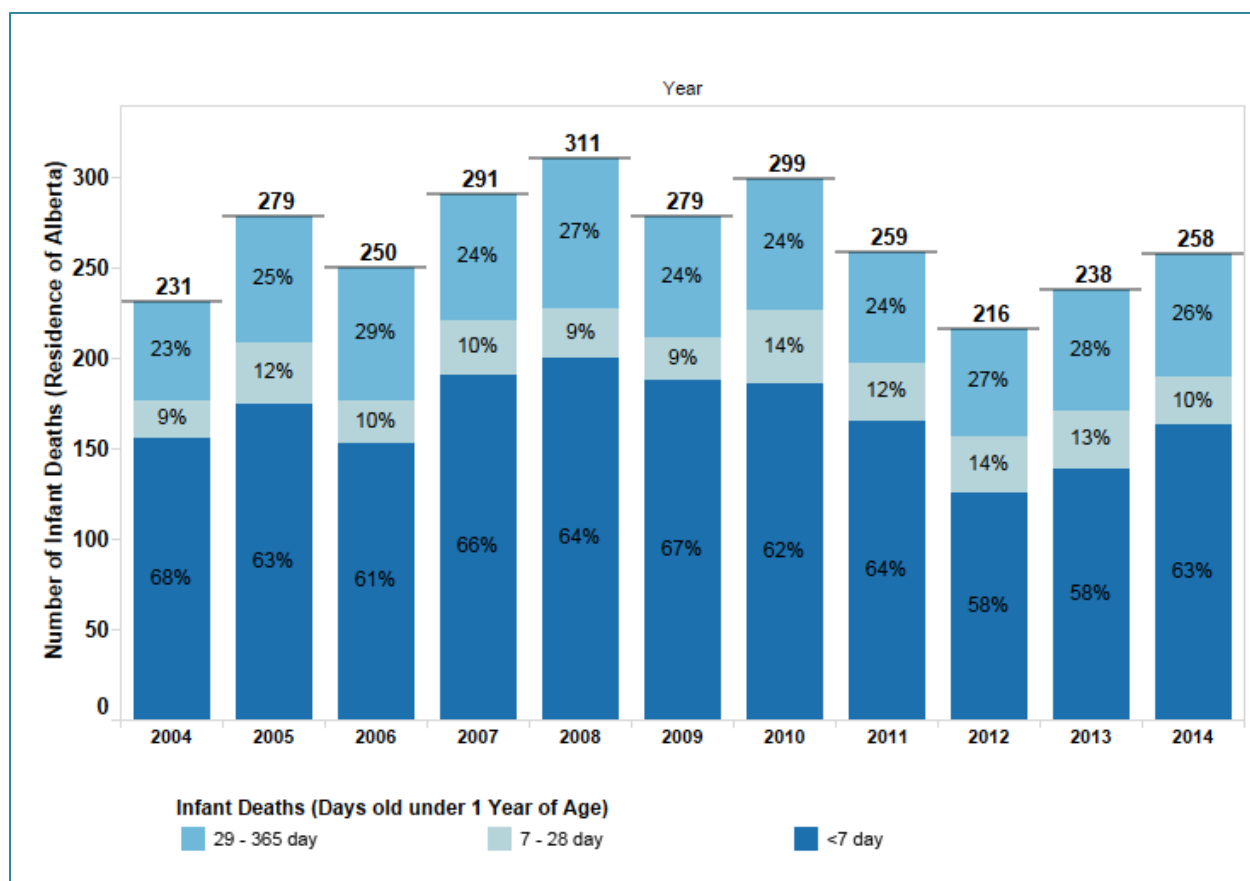


Figure 20: Historical Distribution of Infant Deaths by Age of Infant (Residents of Alberta)

Data Source(s):

1. <http://open.alberta.ca/opendata/infant-deaths-cause-by-gender-and-age>

3.2.2 Leading Causes of Infant Deaths

The leading cause of infant death in Alberta is ‘Newborn affected by maternal factors and by complications of pregnancy, labour and delivery’. This has been the leading cause of infant death for the past 10 years and accounted for 27% (77) of the total infant deaths in Alberta in 2014. The top five causes of infant death made up 64% of all infant deaths in 2014.

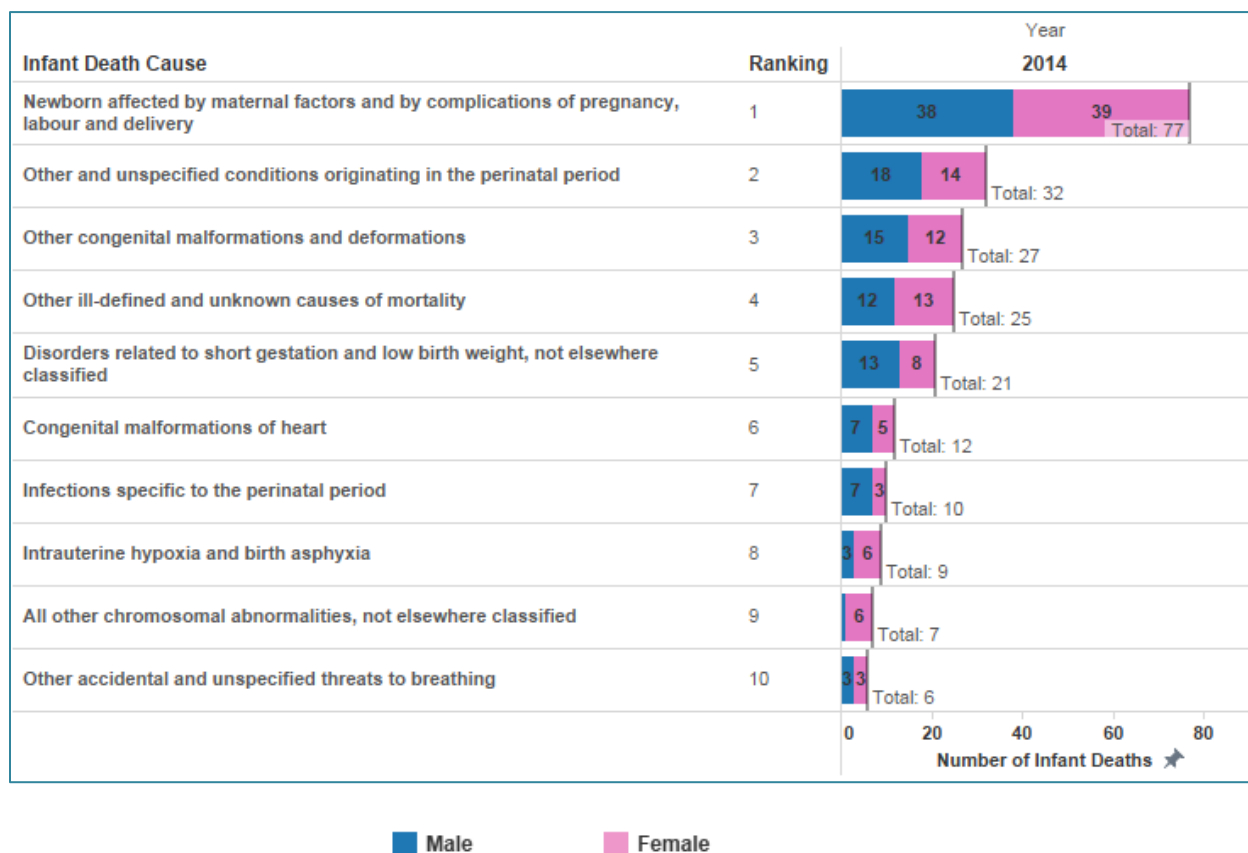


Figure 21: Top Causes of Infant Deaths in 2014

Data Source(s):

1. <http://open.alberta.ca/opendata/infant-deaths-cause-by-gender-and-age>

3.3 Other Death Events

In 2014, there were 23,445 deaths that occurred in Alberta, of which 22,993 were residents of Alberta and 452 were non-residents. There was a 2.2% (499) increase in the number of deaths reported from 2013.

The provincial death rate was 5.7 deaths per 1,000 population for 2014. This remains fairly consistent with the death rate recorded for the last 5 years.

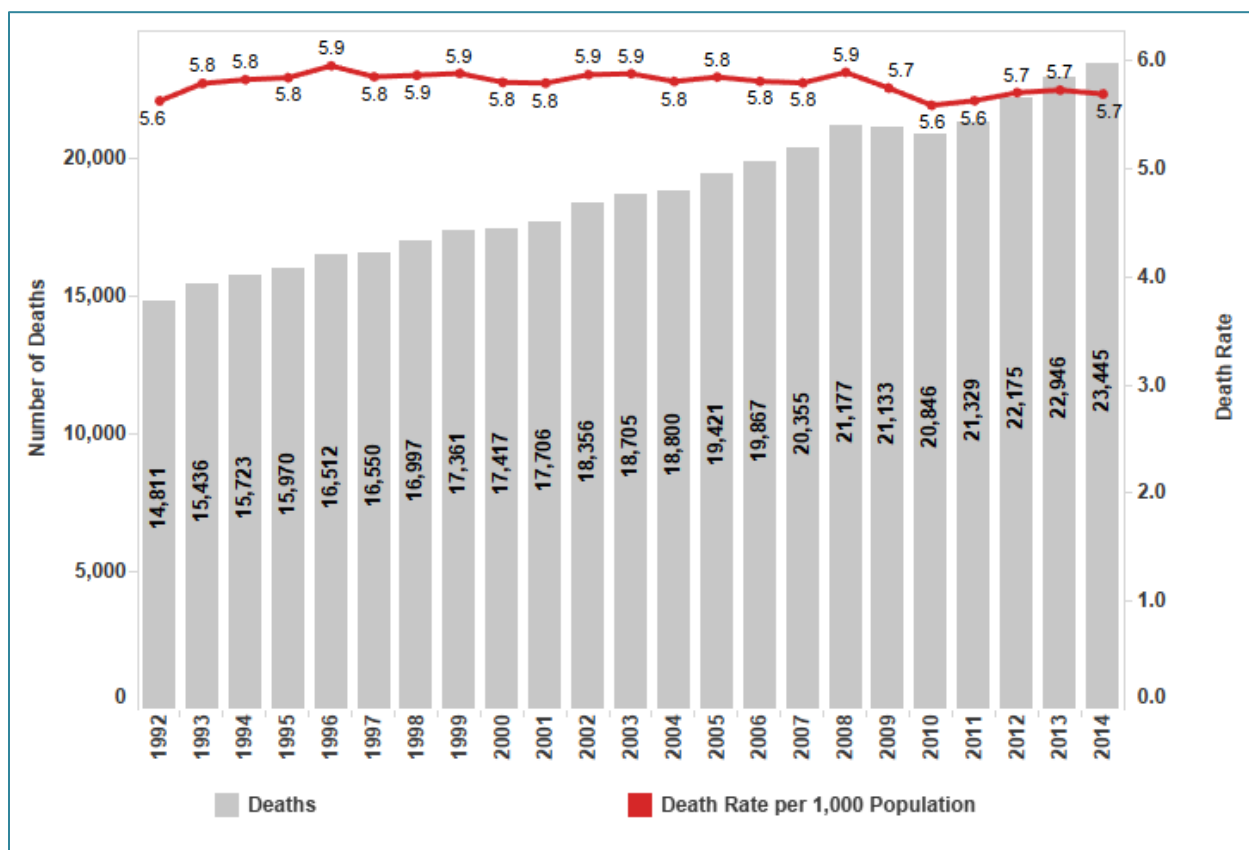


Figure 22: Historical Trend of Deaths and Death Rate in Alberta

Data Source(s):

1. <http://open.alberta.ca/opendata/alberta-annual-deaths-totals>
2. <http://open.alberta.ca/opendata/annual-population-estimates-july-1-alberta>

3.3.1 Distribution of Deaths by Age & Sex (Residents of Alberta)

Of the 22,993* resident deaths that occurred in Alberta in 2014, 52% were male (11,961) and 48% were female (11,031). These percentages remain consistent with the distribution of male and female deaths for the past 8 years.

46.3% of Alberta residents who died in 2014 were aged 80 years and over.

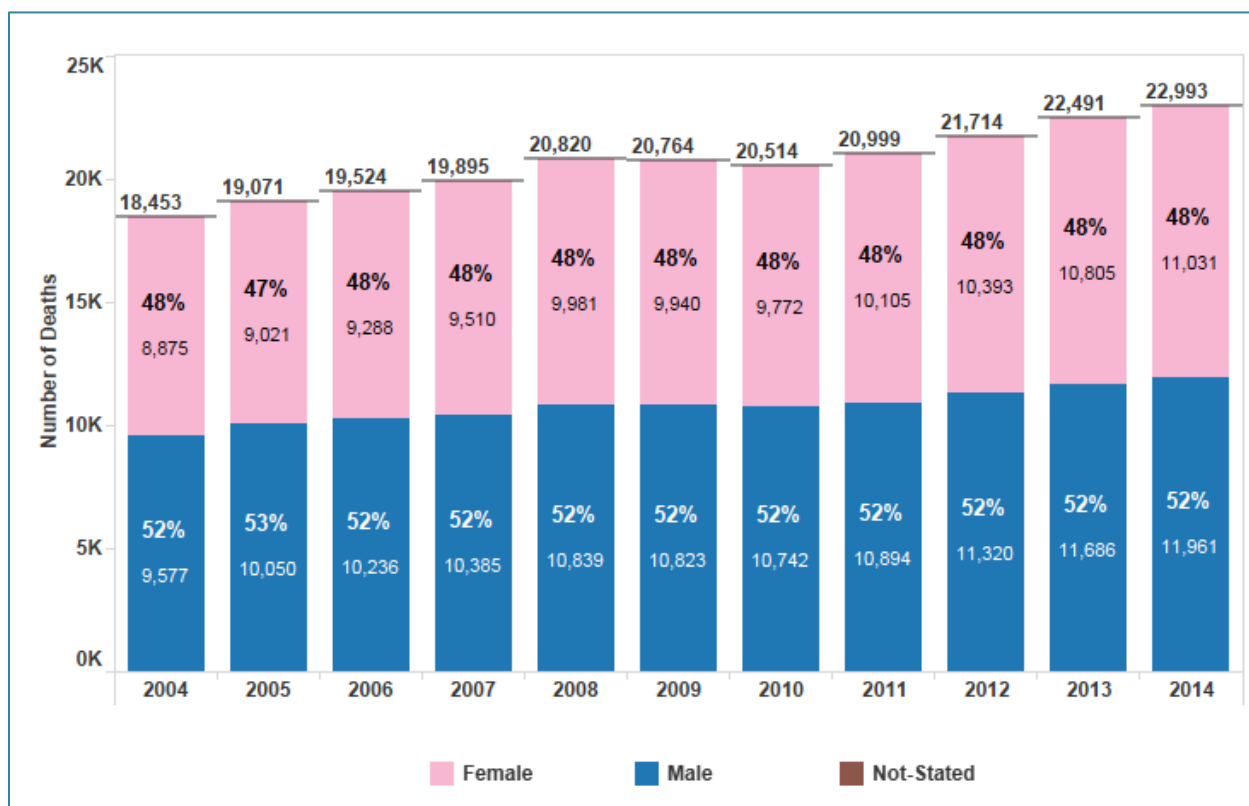


Figure 23: Historical Trend of Deaths by Sex (Residents of Alberta)

*The sum total of male and female resident deaths in Alberta may not add up to the total number of resident deaths. This difference is attributed to cases where the sex was 'Not-Notated'.

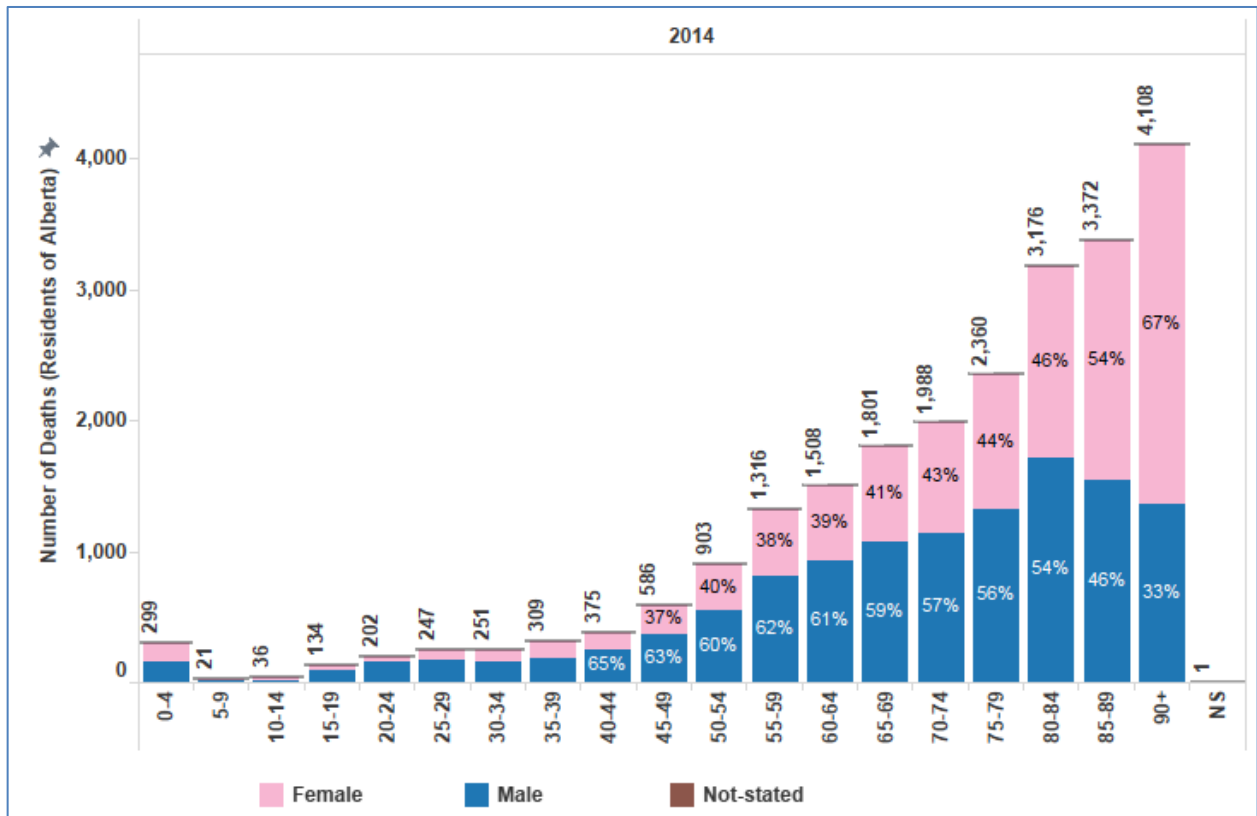


Figure 24: Distribution of Deaths by Age and Sex

Data Source(s):

1. <http://open.alberta.ca/opendata/deaths-cause-by-gender-and-age>

3.3.2 Top 10 Cities, Towns, or Villages with Death Events

Stony Plain experienced the highest death rate per 1,000 population at 15.1. Camrose and Lethbridge had the second and third highest death rates at 13.1 and 10.5 respectively.

Edmonton and Grande Prairie experienced the lowest death rates per 1,000 population at 5.0 and 5.9 respectively.

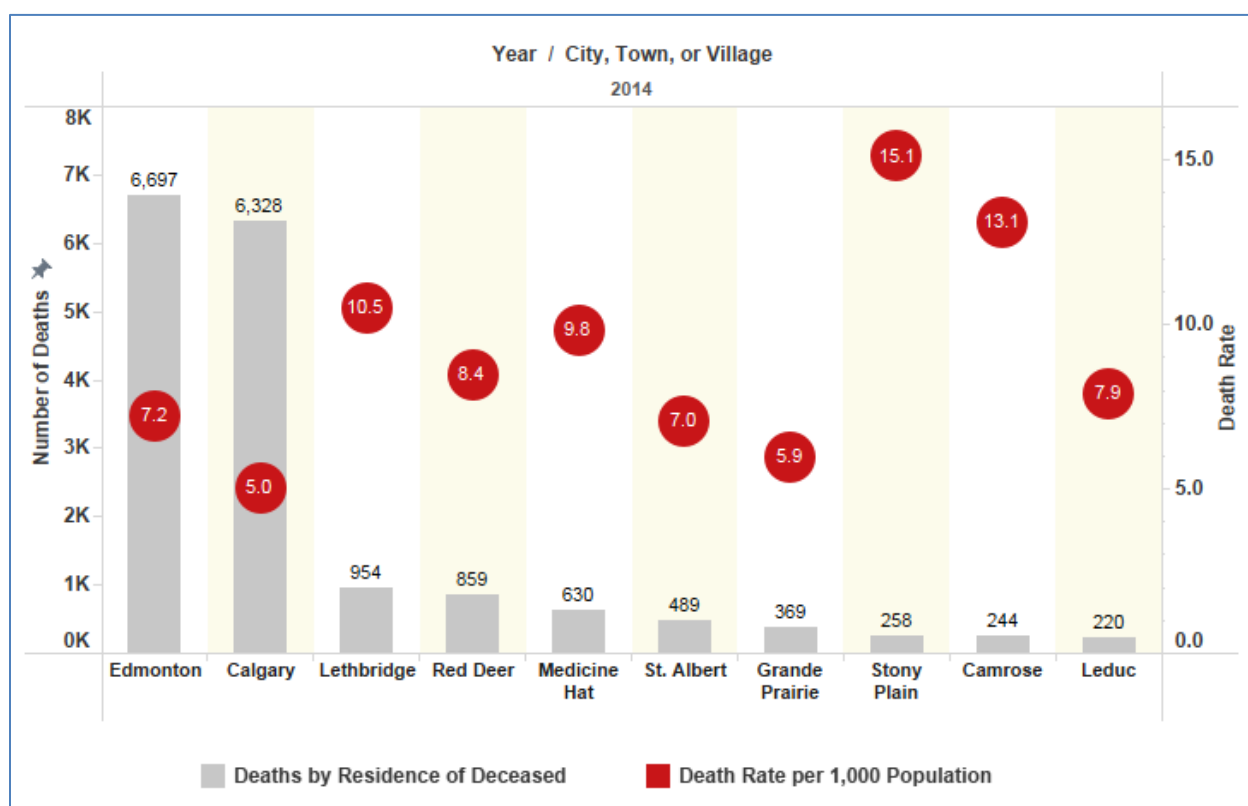


Figure 25: Top 10 Cities, Towns, or Villages with Death Events

Data Source(s):

1. <http://open.alberta.ca/opendata/births-marriages-and-deaths-by-municipality-and-year>
2. <http://open.alberta.ca/opendata/population-estimates-by-age-and-sex-alberta-census-subdivisions-july-1-2001-2015>

3.3.3 Leading Causes of Death

The top five leading causes of death in Alberta comprise 28.3% (6,639) of total deaths (23,445) in 2014.

Deaths caused by organic dementia have risen significantly over the last ten years. In 2004, there were only 329 deaths due to organic dementia whereas in 2014 there were 1,491 organic dementia deaths recorded. All other leading causes of death categories either remained the same or dropped from 2013.

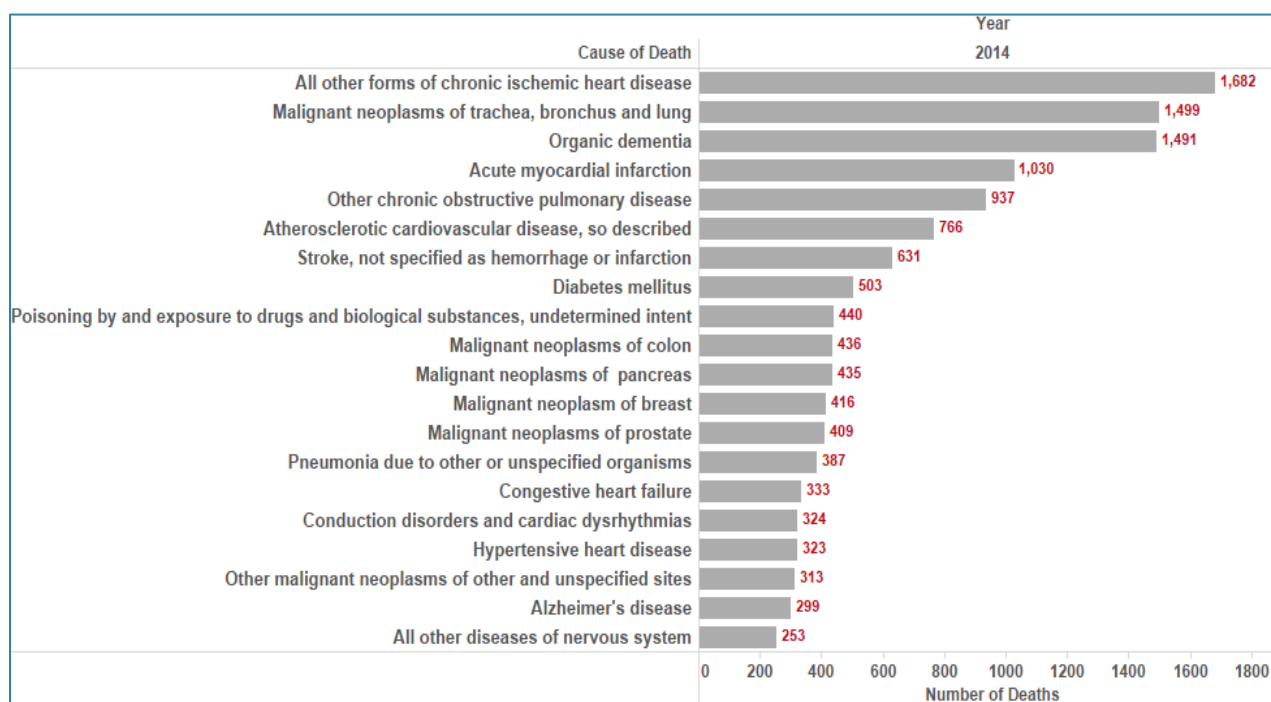


Figure 26: Leading Causes of Death in 2014

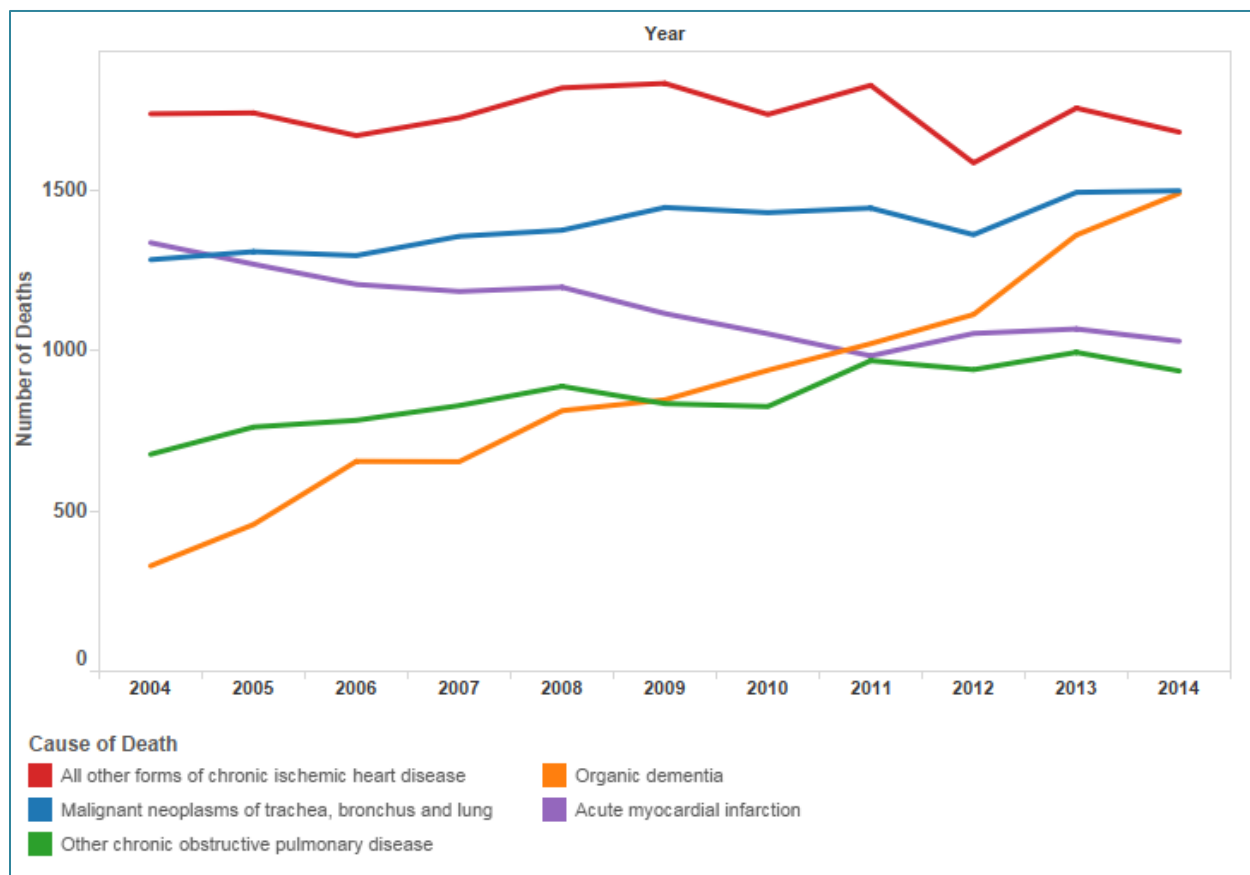


Figure 27: Historical Trend of the Leading Five Causes of Death

Data Source(s):

1. <http://open.alberta.ca/pendata/leading-causes-of-death>

4. Marriage Events

[Marriage Events Visualizations](#)





Marriage Events

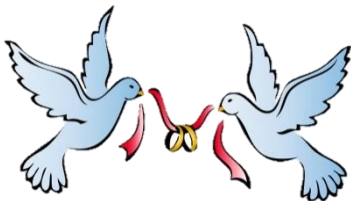
Alberta 2014

20,333

Marriages

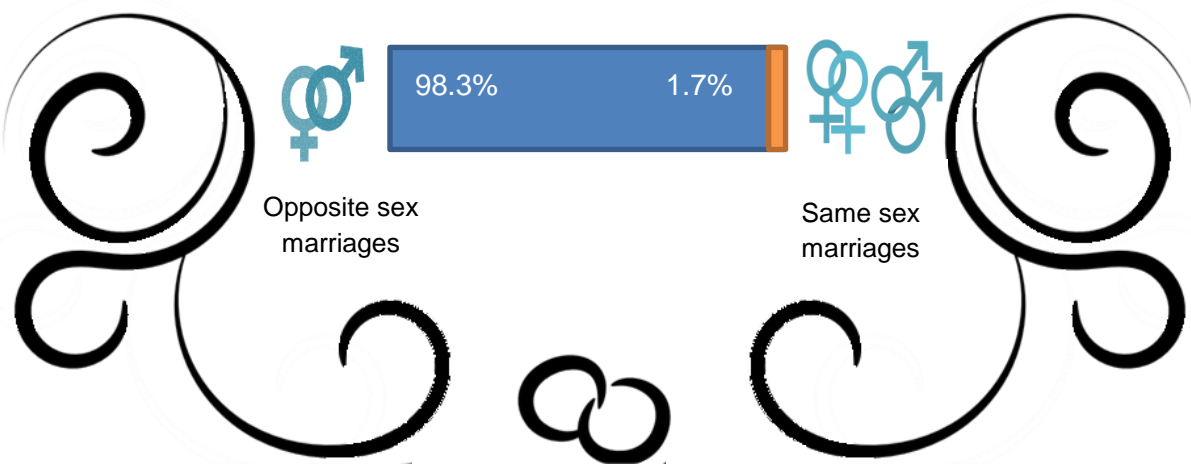
25-29 years

most common age of brides and grooms



71%

of weddings were first time marriages



Opposite sex marriages

Same sex marriages

3.4 Historical Trend of Marriages

In 2014, a total of 20,333 marriages took place in Alberta, representing a 9% increase from the previous year. The provincial marriage rate per 1,000 population for 2014 was 4.9. The marriage rate for the previous five years ranged from 4.7 to 5.1.

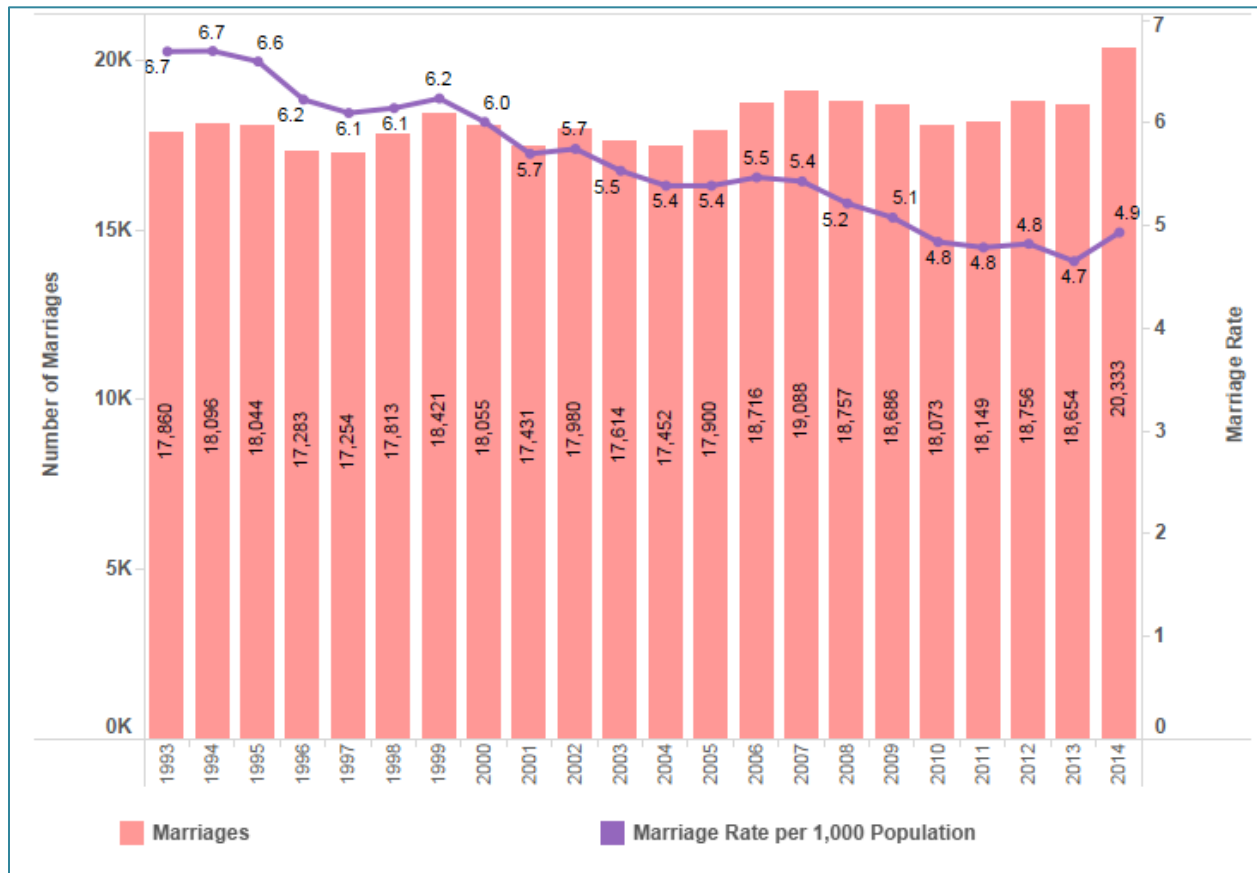


Figure 28: Historical Trend of Marriages and Marriage Rate

Data Source(s):

1. <http://open.alberta.ca/opendata/total-alberta-marriages>
2. <http://open.alberta.ca/opendata/annual-population-estimates-july-1-alberta>

Of the total marriages, 19,981 (98.3%) were opposite-sex couples and 352 (1.7%) were same-sex couples. In 2014, same-sex marriages increased by 8.6% from 2013 and 37.5% from 2012.



Figure 29: Historical Trend of Same Sex Marriage

Data Source(s):

1. <http://open.alberta.ca/opendata/same-gender-marriages-age-of-spouse-2-by-age-of-spouse-1>
2. <http://open.alberta.ca/opendata/marriages-marital-status-of-groom-by-marital-status-of-bride>
3. <http://open.alberta.ca/opendata/total-alberta-marriages>

July, August and September accounted for 47% of the total marriages in 2014. August was the most popular month with 4,236 marriages taking place, followed by July (2,826) and September (2,456). The number of marriages that occurred in August increased by 15% from 2013.

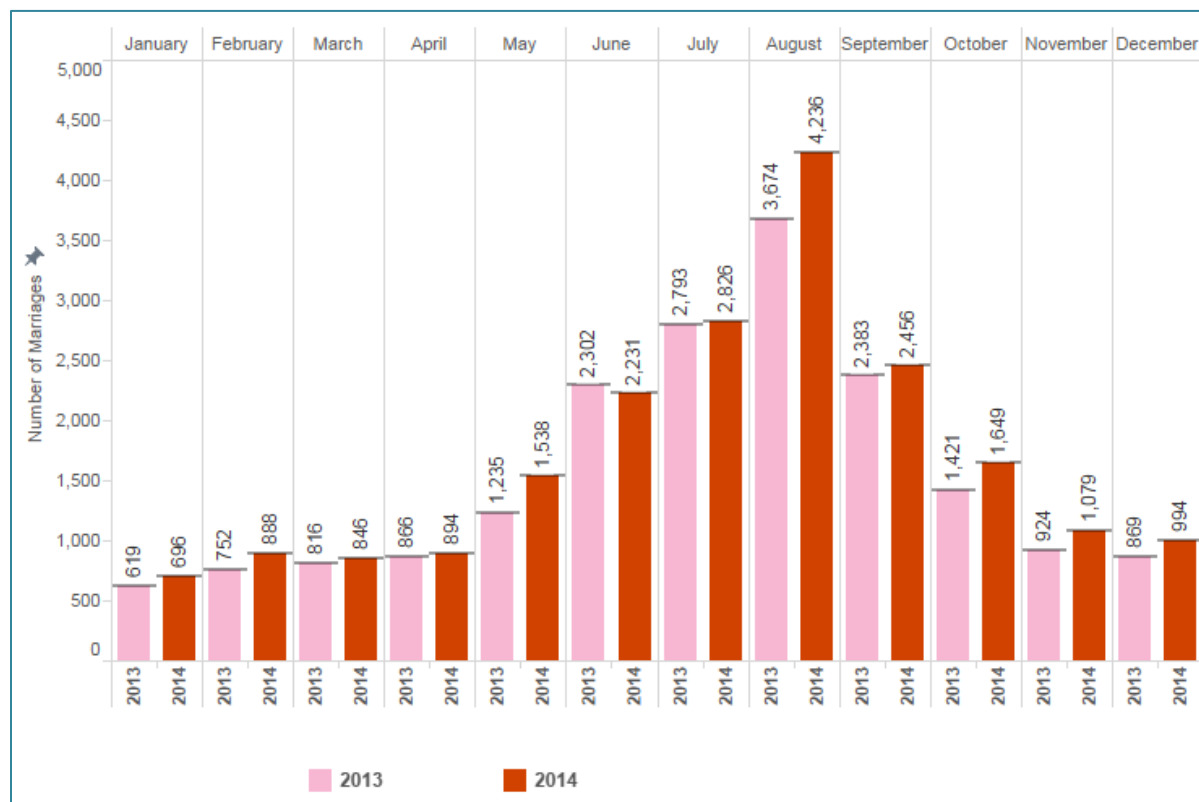


Figure 30: Distribution of Marriages over the Year

Data Source(s):

1. <http://open.alberta.ca/opendata/total-alberta-marriages>
2. <http://open.alberta.ca/opendata/summary-of-vital-events-by-month-of-occurrence-in-alberta>

3.5 Top 10 Cities, Towns, or Villages with Marriage Events

Of the total marriages in 2014, 47.6% occurred in Calgary and Edmonton. Banff and Jasper continue to remain popular marriage destinations with 82.6 and 63.4 of marriages occurring per 1,000 population respectively.

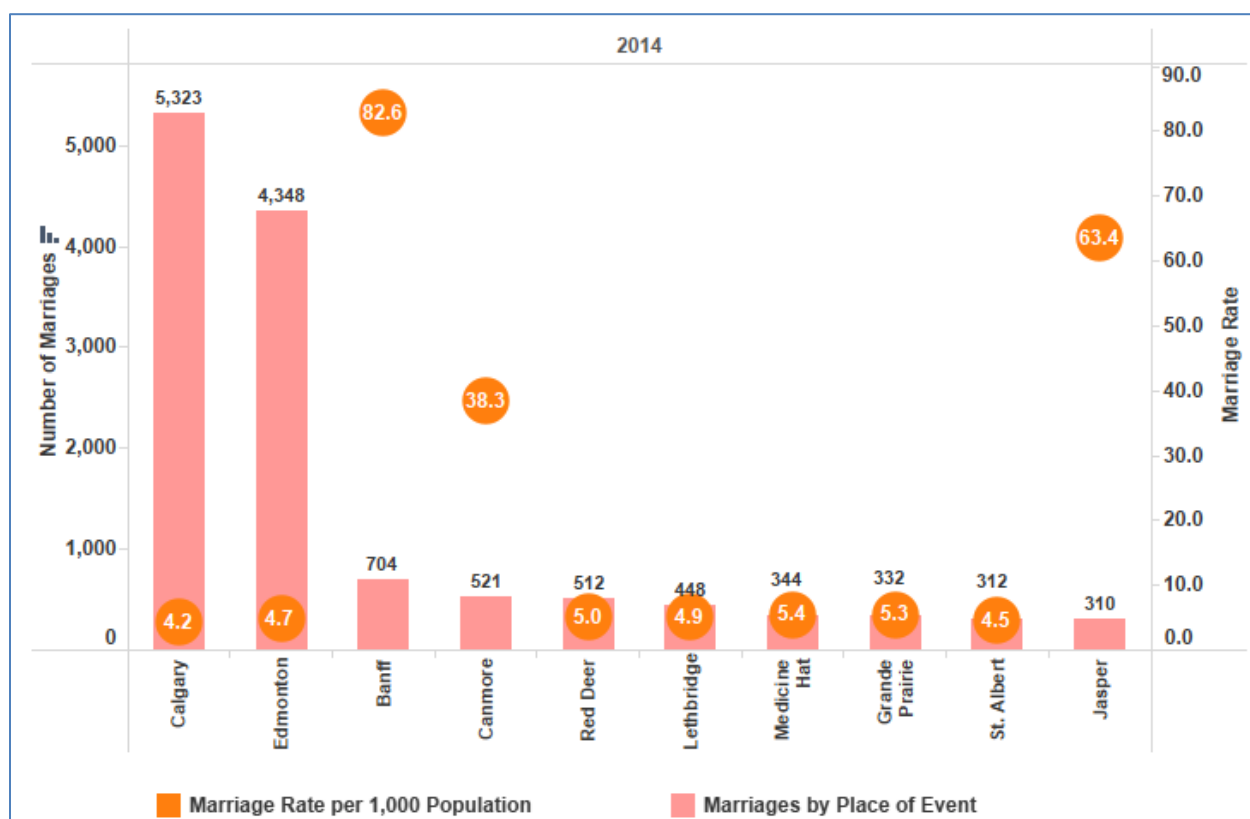


Figure 31: Top 10 Cities, Towns, or Villages with Marriage Events

Data Source(s):

1. <http://open.alberta.ca/opendata/births-marriages-and-deaths-by-municipality-and-year>
2. <http://open.alberta.ca/opendata/population-estimates-by-age-and-sex-alberta-census-subdivisions-july-1-2001-2015>

3.6 Distribution of Marriage Events by Age

In 2014, over 30% of opposite-sex marriages were between the ages of 25-29 years. For same-sex marriages, over 25% of spouses were between the ages of 25-29 years.

The ten year trend observes a gradual decrease in the distribution of marriages for brides aged 20-24 years and a gradual increase in the distribution of marriages for brides aged 30-34 years.

Similarly, the ten year trend observes a decrease in the distribution of marriages for grooms between the ages of 20-24 years.

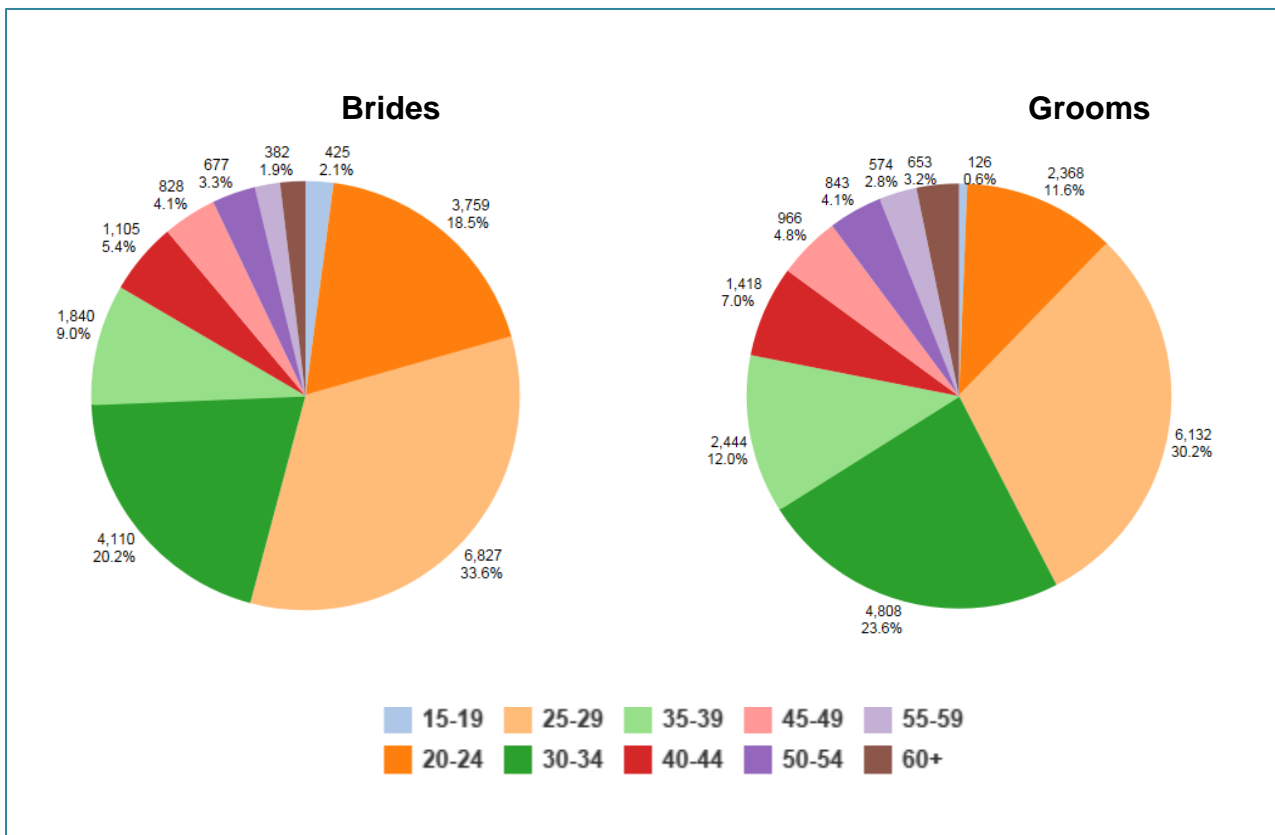


Figure 32: Distribution of Ages of the Bride and the Groom (Opposite Sex Marriages)

Age of Bride (Years)	Age of Groom (Years)													
	<15	15-19	20-24	25-29	30-34	35-39	40-44	45-49	50-54	55-59	60-64	65-69	70-74	75+
<15	0	0	0	0	0	0	0	0	0	0	0	0	0	0
15-19	0	89	259	61	11	4	0	1	0	0	0	0	0	0
20-24	0	35	1,629	1,606	388	67	20	6	5	1	0	1	1	0
25-29	0	0	410	3,615	2,109	512	119	32	18	8	3	1	0	0
30-34	0	2	57	712	1,853	986	334	94	40	21	6	2	1	2
35-39	0	0	9	116	354	650	426	166	76	27	9	7	0	0
40-44	0	0	3	15	72	172	355	272	147	46	18	4	0	1
45-49	0	0	0	5	16	41	123	263	222	110	31	13	2	2
50-54	0	0	1	2	3	10	28	106	250	178	67	21	7	4
55-59	0	0	0	0	2	1	12	20	70	137	83	38	9	7
60-64	0	0	0	0	0	0	0	5	13	37	64	45	19	8
65-69	0	0	0	0	0	1	1	1	2	7	15	32	30	20
70-74	0	0	0	0	0	0	0	0	0	1	5	5	16	22
75+	0	0	0	0	0	0	0	0	0	1	2	3	3	24

Figure 33: Distribution of Marriages by Age Groupings (Opposite Sex)

Age of Spouse 1	Age of Spouse 2													
	<15	15-19	20-24	25-29	30-34	35-39	40-44	45-49	50-54	55-59	60-64	65-69	70-74	75+
<15	0	0	0	0	0	0	0	0	0	0	0	0	0	0
15-19	0	0	0	0	0	0	0	0	0	0	0	0	0	0
20-24	0	0	13	15	3	0	1	0	0	0	0	0	0	0
25-29	0	1	13	39	16	5	3	1	0	0	0	0	0	0
30-34	0	0	6	22	26	12	5	1	0	0	0	0	0	0
35-39	0	0	4	10	10	17	7	2	1	0	0	0	0	0
40-44	0	0	3	5	7	7	10	6	3	1	0	0	0	0
45-49	0	0	0	3	3	2	7	6	3	5	0	0	0	0
50-54	0	0	0	2	2	3	0	4	12	1	1	1	0	0
55-59	0	0	0	1	1	3	1	5	2	2	0	0	0	0
60-64	0	0	0	0	0	0	0	0	0	1	2	0	0	0
65-69	0	0	0	0	0	0	0	1	0	0	0	0	0	0
70-74	0	0	1	0	0	0	0	0	0	0	0	0	0	1
75+	0	0	0	0	1	0	0	0	0	0	0	0	0	0

Figure 34: Distribution of Marriages by Age Groupings (Same Sex)

Data Source(s):

1. <http://open.alberta.ca/opendata/marriages-age-of-groom-by-age-of-bride>
2. <http://open.alberta.ca/opendata/same-gender-marriages-age-of-spouse-2-by-age-of-spouse-1>

3.7 Distribution of Marriage Events by Marital Status

In 2014, there were 14,122 (71%) first-time marriages for opposite-sex couples and 266 (76%) for same-sex couples.

Marital Status of Groom	Marital Status of Bride		
	Never Married	Widowed	Divorced
Never Married	14,122	77	1,550
Widowed	79	101	170
Divorced	1,695	173	2,014

Figure 35: Marriages by Marital Status of Bride and Groom (Opposite Sex)

Data Source(s):

1. <http://open.alberta.ca/opendata/marriages-marital-status-of-groom-by-marital-status-of-bride>

Marital Status of Spouse 1	Marital Status of Spouse 2		
	Never Married	Widowed	Divorced
Never Married	266	4	41
Widowed	1	0	0
Divorced	29	0	11

Figure 36: Marriages by Marital Status of the Spouses (Same Sex)

Data Source(s):

1. <http://open.alberta.ca/opendata/same-gender-marriages-marital-status-of-spouse-2-by-marital-status-of-spouse-1>

Glossary of Terms

Birth Weight	The first weight of the fetus or newborn recorded after birth. For live births, this weight should be measured within the first hour of life before significant postnatal weight loss has occurred.
Birth Rate	The number of live births divided by the mid-year (July 1) population estimates and converted to a rate per 1,000 population.
Cause of Death (ICD-10)	Causes of death are based on the World Health Organization's International Classification of Diseases 10th Edition (ICD-10) Codes.
Death Rate	The number of deaths divided by the mid-year (July 1) population estimates and converted to a rate per 1,000 population.
Gestation Period	The time between conception and birth of an infant, recorded in completed weeks. The usual length being 40 weeks.
Infant Death	The death of a child aged between birth and one year of age.
Infant Death Rate	The number of infant deaths divided by the number of live births and converted to a rate per 1,000 live births.
Live Birth	A complete expulsion or extraction from the mother, irrespective of the duration of the pregnancy, of a fetus in which, after expulsion or extraction, there is breathing, beating of the heart, pulsation of the umbilical cord or definite movement of a voluntary muscle.

Live Birth Order	The number of live births to the mother, including this birth.
Live Birth Rate	The number of live births divided by the mid-year (July 1) population and converted to a rate per 1,000 population.
Marriage Rate	The number of marriages divided by the mid-year (July 1) population estimates and converted to a rate per 1,000 population.
Natural Increase	Excess of births over deaths.
Natural Increase Rate	Excess of births over deaths expressed as a rate per 1,000 population and converted to a rate per 1,000 population. It does not include increases due to immigration or decreases due to emigration.
Natural Population Increase (NPI)	The component increases in a population due to the number of live births less the deaths; also called Natural Population Growth. This increase is often expressed as a rate, such as per 1,000 population. It does not include increases due to immigration or decreases due to emigration.
Neonatal Death	Death of an infant 28 days to age or less.
NS	Information is unavailable and therefore is 'Not Stated'.
Population	The 2014 population estimates are based on the Annual Population Estimates (July 1) found on the Alberta Open Government Portal. This Alberta Official Statistics information product (data sourced from Statistics Canada) presents the annual population estimates for Alberta. This data is used to inform policy and planning decisions, budgetary

	decisions, and federal transfer payments. This data is also used as a base for additional information such as population projections and regional estimates.
Stillbirth	The birth of a baby who is born without any signs of life at or after 20 weeks pregnancy or weighing more than 500 grams.
Stillbirth Rate	The number of stillbirths divided by the number of total births (live births plus stillbirths) and converted to a rate per 1,000 total births.
Total Births	The number of live births plus stillbirths.
Vital Events	Births, deaths, stillbirths, marriages, and domestic partnerships; all events which have to do with an individual's entrance or departure from life, together with changes in civil status.
Vital Statistics	Records dealing with births, marriages, stillbirths and deaths; all events which have to do with an individual's entrance or departure from life, together with changes in civil status.