

Alberta Crop Report



Crop Conditions as of August 31, 2021 (Abbreviated)

Harvest is estimated to be 26 per cent complete in the province (Table 1), with all regions advancing between eight and 11 points over last week's report. An additional 18 per cent of major crops are in the swath. Regional harvest progress is ahead of last year and the five- and 10-year averages. By crop, spring wheat harvest is 30 per cent complete versus its five-year average of nine per cent, barley averages 35 per cent combined compared to its five-year average of 14 per cent with oats estimated at 11 per cent combined versus the five-year average of three per cent. Canola harvest at four per cent compares to its five-year average of two per cent and field peas at 85 per cent in the bin compared to a five-year average of 57 per cent.

Table 1: Estimate of Harvest Progress (Major Crops) as of August 31, 2021

	Per Cent of Crops Combined					
	South	Central	N East	N West	Peace	Alberta
Spring Wheat	40.3%	32.9%	20.0%	33.8%	25.1%	30.2%
Barley	54.9%	34.9%	11.7%	30.4%	13.0%	34.9%
Oats	46.2%	16.0%	3.5%	9.8%	10.9%	11.2%
Canola	12.5%	2.0%	1.9%	2.4%	0.8%	3.7%
Dry Peas	92.0%	88.1%	95.7%	90.2%	58.3%	84.8%
Major Crops	43.5%	27.5%	16.1%	22.8%	17.0%	26.2%
Last Year	29.1%	8.0%	4.9%	7.5%	6.0%	10.3%
5-year Index	31.2%	7.5%	3.5%	1.4%	3.9%	11.0%
10-year Index	30.6%	7.4%	4.9%	3.6%	10.8%	12.4%

Source: AF/AFSC Crop Reporting Survey

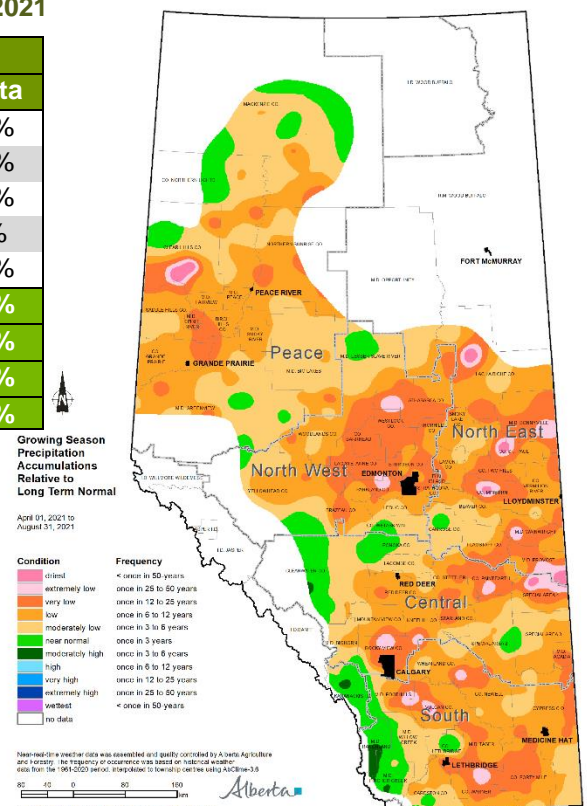
Table 2: Regional Pasture Conditions as of August 31, 2021

	Poor	Fair	Good	Excellent
South	51.4%	37.3%	10.7%	0.6%
Central	30.3%	31.7%	38.0%	0.0%
North East	78.2%	17.5%	4.3%	0.0%
North West	46.1%	43.0%	10.9%	0.0%
Peace	63.5%	33.2%	3.3%	0.0%
Average	50.5%	32.5%	16.8%	0.2%
5-year (2011-2020) Avg.	22.1%	27.1%	40.0%	10.8%

Source: AF/AFSC Crop Reporting Survey

Pasture conditions remains a concern for livestock producers struggling to feed their animals. Provincial estimates show 51 per cent of pasture is rated as poor, 33 per cent fair, with 17 per cent as good (Table 2). Central region ratings show that they have the highest number of acres rated as good at 38 per cent, while North East has the most acres rated as poor at 78 per cent. Tame hay ratings are comparable to pasture with 49 per cent rated poor, 33 per cent rated fair and 18 per cent as good across Alberta.

Precipitation received since April 1 has been below the long-term normal for the vast majority of the province, with pockets in all regions experiencing rainfall shortages seen less than once in 12 to 50 years (dark orange and pink on Map). Surface soil moisture ratings (sub-surface in brackets) are very similar to last week, with 33 (40) per cent rated poor, 35 (32) per cent fair, 31 (26) per cent good and 1 (2) per cent excellent.



Visit weatherdata.ca for additional maps and meteorological data

Regional Assessments:

Region One: South (Strathmore, Lethbridge, Medicine Hat, Foremost)

- Cool wet weather caused some harvest delays this week. The major crops are 44 per cent combined, 12 points above the five-year average. Swathed crops are now eight per cent, four points below the five-year average. The processing corn harvest started this past weekend, the main potato harvest should start by the end of the week.
- Pasture ratings are now 51 per cent poor, 37 per cent fair, 11 per cent good, and 1 per cent excellent.
- Hay ratings are now 44 per cent poor, 41 per cent fair, and 15 per cent good.
- Surface soil moisture rated as poor/fair is 79 per cent with sub-surface moisture rated at 91 per cent poor/fair.

Region Two: Central (Rimbey, Airdrie, Coronation, Oyen)

- Moisture caused some harvest delays throughout the week. The major crops are 28 per cent combined, 20 points above the five-year average. Swathed crops are now 18 per cent, nine points above the five-year average.
- Pasture ratings are now 30 per cent poor, 32 per cent fair, and 38 per cent good.
- Hay ratings are now 33 per cent poor, 32 per cent fair, and 35 per cent good.
- Surface soil moisture rated as poor/fair is 57 per cent with sub-surface moisture rated at 62 per cent poor/fair.

Region Three: North East (Smoky Lake, Vermilion, Camrose, Provost)

- Rain and scattered showers slowed harvest in some areas. The major crops are 16 per cent combined, 12 points above the five-year average. Swathed crops are now 25 per cent, 14 points above the five-year average.
- Pasture ratings are now 78 per cent poor, 18 per cent fair, and 4 per cent good.
- Hay ratings are now 81 per cent poor, 16 per cent fair, and 3 per cent good.
- Surface soil moisture rated as poor/fair is 65 per cent with sub-surface moisture rated at 64 per cent poor/fair.

Region Four: North West (Barrhead, Edmonton, Leduc, Drayton Valley, Athabasca)

- Rains early in the week slowed harvest activity. The major crops are 23 per cent combined, which is 22 points above the five-year average. Swathed crops are now 23 per cent, 18 points above the five-year average.
- Pasture ratings are now 46 per cent poor, 43 per cent fair, and 11 per cent good.
- Hay ratings are now 41 per cent poor, 38 per cent fair, and 21 per cent good.
- Surface soil moisture rated as poor/fair is 50 per cent with sub-surface moisture rated at 44 per cent poor/fair.

Region Five: Peace (Fairview, Falher, Grande Prairie, Valleyview)

- Rain last week temporarily slowed harvest progress. The major crops are 17 per cent combined, 13 points above the five-year average. Swathed crops are now 20 per cent, which is nine points above the five-year average.
- Pasture ratings are now 64 per cent poor, 33 per cent fair, and 3 per cent good.
- Hay ratings are now 59 per cent poor, 38 per cent fair, and 3 per cent good.
- Surface soil moisture rated as poor/fair is 79 per cent with sub-surface moisture rated at 84 per cent poor/fair.

Contacts

Agriculture Financial Services Corporation
Business Risk Management Products Unit
Lacombe, Alberta
September 3, 2021

Jackie Sanden – Product Coordinator
Ken Handford – Product Development Analyst
Email: MediaInquiry@afsc.ca

Note to Users: The contents of this document may not be used or reproduced without properly accrediting AFSC and Alberta Agriculture and Forestry, Intergovernmental and Trade Relations Branch, Statistics and Data Development Section