

December 2020

19-BCV-018
Page 1 of 10

ADHERED MASONRY VENEER-GENERIC ENGINEERED DETAILS FOR PART 9 RESIDENTIAL BUILDINGS

PURPOSE

To recognize the acceptability of the values within the document “Adhered Masonry Veneer Installations to a Maximum 3.05m Above Local Grade On Part 9 Residential Units In Alberta” prepared by the Alberta Masonry Council.

DISCUSSION

Part 9 of the National Building Code-2019 Alberta Edition (NBC(AE)) does not prescribe requirements for this type of installation.

Subsequently Safety Codes Officers (SCO) may request installations be individually engineered under Part 4 of the NBC(AE).

VARIANCE

This variance provides approximately equivalent or greater safety performance with respect to persons and property as provided for by the *Safety Codes Act* and the NBC(AE).

1. Adhered Masonry Veneer Installations to a Maximum 3.05 m Above Local Grade On Part 9 Residential Units are permitted using the values from the following document:

Adhered Masonry Veneer Installations to a Maximum 3.05 m Above Local Grade On Part 9 Residential Units In Alberta, December 1, 2020

Prepared by Dr. Mark Hagel, PhD., P.Eng.

Published by the Alberta Masonry Council, available free of charge, and distributed by:

Alberta Masonry Council

Mailing address:

Suite 166, 3-11 Bellerose Drive

St. Albert, AB T8N 5C9

Phone: 780-901-2902

Web: <https://albertamasonrycouncil.ca/>

This report is acceptable in place of project-specific engineering on a case-by-case basis, provided the project-specific details for the “adhered masonry veneers for installed heights to a maximum 3.05 m above local grade on Part 9 residential units” SHALL appear on the drawings

Unless stated otherwise, all Code references in this STANDATA are to Division B of the National Building Code-2019 Alberta Edition

Issuance of this STANDATA is authorized by
the Provincial Building Administrator

[Original Signed]
Paul Chang

The logo for the province of Alberta, featuring the word "Alberta" in a stylized, cursive font with a small blue square at the end of the word.

submitted for the building permit. Walls that do not meet the criteria for the document “adhered manufactured masonry veneers for installed heights to a maximum 3.05 m above local grade on Part 9 residential units” may need to have site-specific engineering on a case-by-case basis.

2. Attached drawings as applicable must be included in submission.

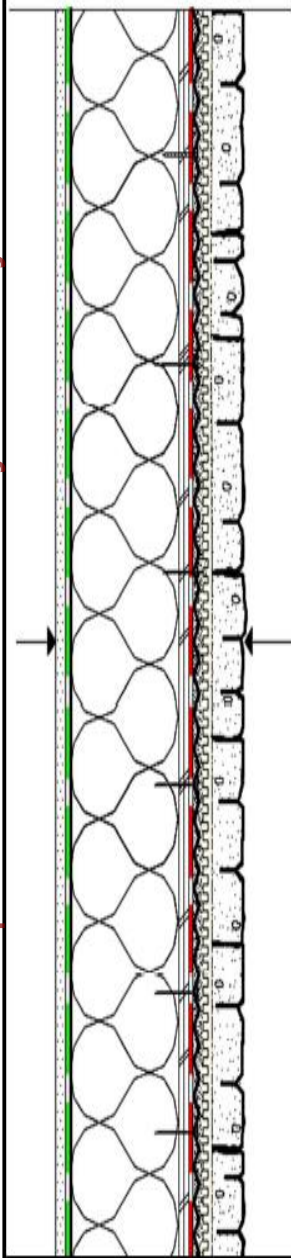
This VARIANCE is applicable throughout the province of Alberta.

Superseded in January 2021 by 19-BCV-018R1

CASE I: ADHERED MASONRY VENEER *WITHOUT* DRAINAGE

Where the wall claddings above and/or adjacent to the adhered masonry veneer do not employ drainage, then the adhered stone veneer *need not* utilize a drainage mat.

Adhered Masonry Veneer - Typical Wall Cross Section

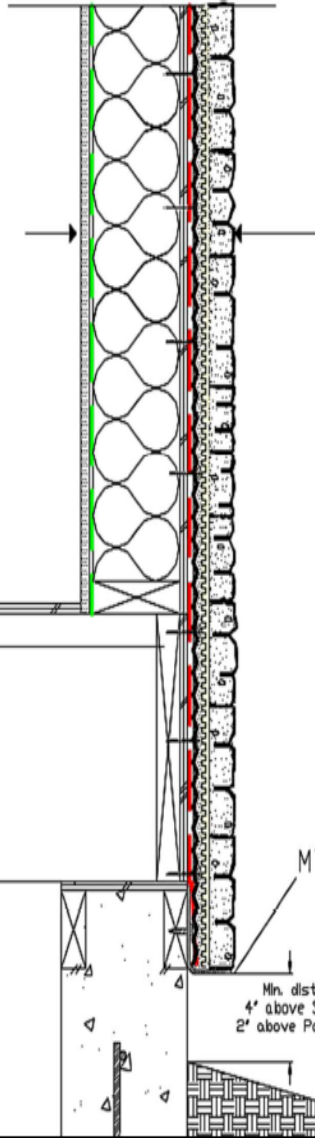


Where the wall cladding above and/or adjacent to the adhered masonry veneer does NOT employ drainage:

- Adhered thin masonry veneer with AMC approved units
- Min. $\frac{3}{8}$ " (9.5 mm) THK. Setting Bedding mortar with AMC approved setting bed mortar
- Min. $\frac{1}{2}$ " (13 mm) THK. scratch coat with pre-bagged Type S mortar lightly scored with hand broom
- 2.5 lb/yd² Galvanized Diamond Wire Self-furring Lath fastened as per AMC pre-engineered requirements
- Weather Resistant Barrier (WRB) as per AMC pre-engineered requirements
- Exterior grade sheathing as per AMC pre-engineered requirements
- 2x6 wood studs at 16" o.c. or 24" o.c,
- interior sheathing

Superseded in January 2021 by 19-BCV-018R1

Adhered Masonry Veneer - Foundation Detail



Where the wall cladding above and/or adjacent to the adhered masonry veneer does NOT employ drainage:

- Adhered thin masonry veneer with AMC approved units
- Min. 3/8" (9.5 mm) THK. Setting Bedding mortar with AMC approved setting bed mortar
- Min. 1/2" (13 mm) THK. scratch coat with pre-bagged Type S mortar lightly scored with hand broom
- 2.5 lb/yd² Galvanized Diamond Wire Self-furring Lath fastened as per AMC pre-engineered requirements
- Weather Resistant Barrier (WRB) as per AMC pre-engineered requirements
- Exterior grade sheathing as per AMC pre-engineered requirements
- 2x6 wood studs at 16" o.c. or 24" o.c.
- interior sheathing

MTI perforated flashing™ or Drainaway™ perforated flashing

Min. dist
4' above Soil
2' above Paved

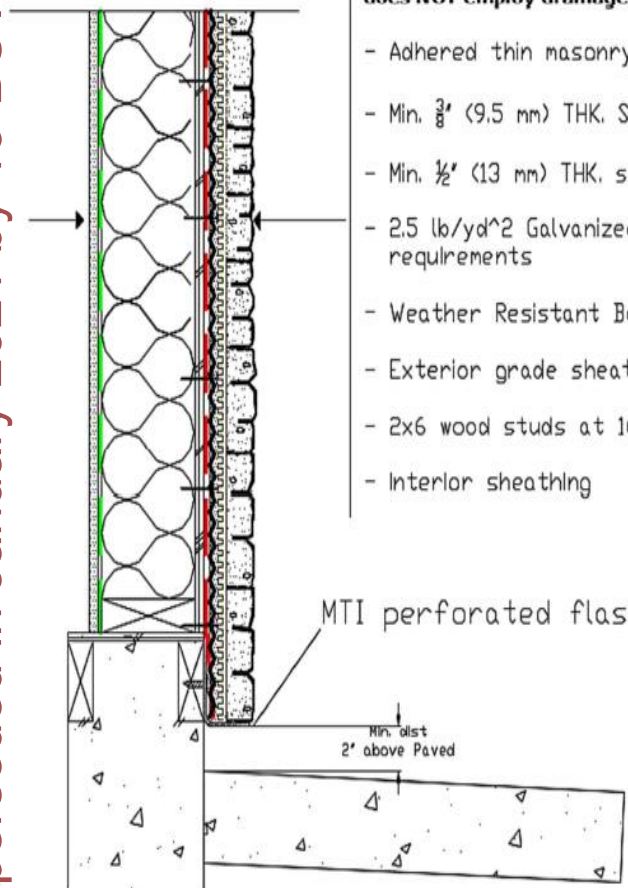
Superseded in January 2021 by 19-BCV-018R1

Adhered Masonry Veneer - Base of Wall Detail I (Wall on curb)

Superseded in January 2021 by 19-BCV-018R1

Where the wall cladding above and/or adjacent to the adhered masonry veneer does NOT employ drainage:

- Adhered thin masonry veneer with AMC approved units
- Min. $\frac{3}{8}$ " (9.5 mm) THK. Setting Bedding mortar with AMC approved setting bed mortar
- Min. $\frac{1}{2}$ " (13 mm) THK. scratch coat with pre-bagged Type S mortar lightly scored with hand broom
- 2.5 lb/yd² Galvanized Diamond Wire Self-furring Lath fastened as per AMC pre-engineered requirements
- Weather Resistant Barrier (WRB) as per AMC pre-engineered requirements
- Exterior grade sheathing as per AMC pre-engineered requirements
- 2x6 wood studs at 16" o.c. or 24" o.c,
- Interior sheathing



MTI perforated flashing™ or Drainaway™ perforated flashing

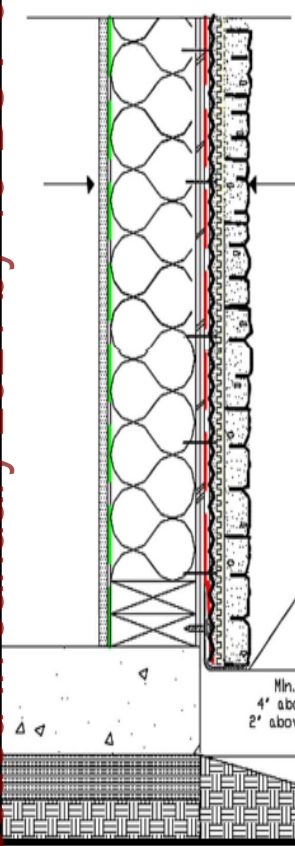
Min. dist
2" above Paved

Adhered Masonry Veneer - Base of Wall Detail II (Walk-out basement)

Superseded in January 2021 by 19-BCV-018R1

Where the wall cladding above and/or adjacent to the adhered masonry veneer does NOT employ drainage:

- Adhered thin masonry veneer with AMC approved units
- Min. $\frac{3}{8}$ " (9.5 mm) THK. Setting Bedding mortar with AMC approved setting bed mortar
- Min. $\frac{1}{2}$ " (13 mm) THK. scratch coat with pre-bagged Type S mortar lightly scored with hand broom
- 2.5 lb/yd² Galvanized Diamond Wire Self-furring Lath fastened as per AMC pre-engineered requirements
- Weather Resistant Barrier (WRB) as per AMC pre-engineered requirements
- Exterior grade sheathing as per AMC pre-engineered requirements
- 2x6 wood studs at 16" o.c. or 24" o.c,
- interior sheathing



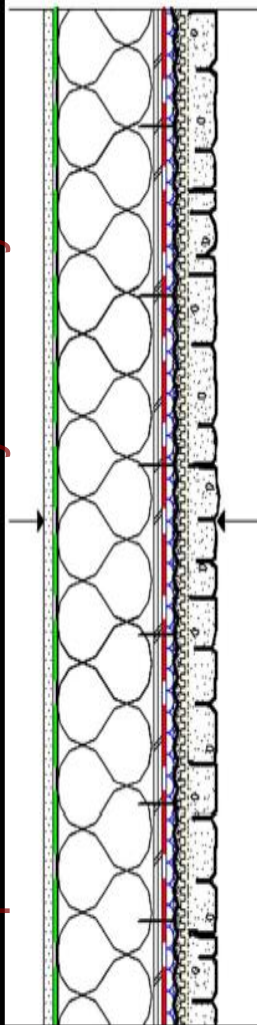
MTI perforated flashing™ or Drainaway™ perforated flashing

Min. dist
4" above Soil
2" above Paved

CASE 2: ADHERED MASONRY VENEER WITH DRAINAGE

Where the adhered masonry veneer installation height is to the underside of the first storey roof (i.e. full height wall) OR when the wall cladding above and/or adjacent to the adhered masonry veneer employs a drainage mat the adhered masonry veneer *shall* utilize a drainage mat.

Adhered Masonry Veneer with Drainage - Typical Wall Section



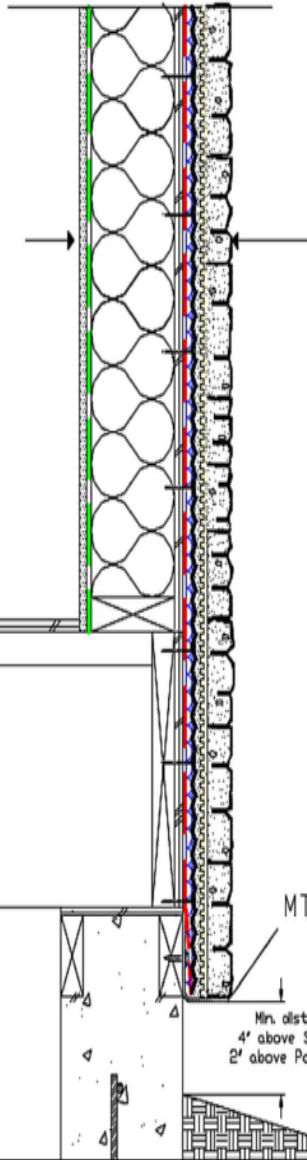
Where the adhered masonry veneer height is to underside of roof of the first storey or when the wall cladding above and/or adjacent employs drainage:

- Adhered thin masonry veneer with AMC approved units
- Min. $\frac{3}{8}$ " (9.5 mm) THK. Setting bedding mortar with AMC approved setting bed mortar
- Min. $\frac{1}{2}$ " (13 mm) THK. scratch coat with pre-bagged Type S mortar lightly scored with hand broom
- 2.5 lb/yd² Galvanized Diamond Wire Self-furring Lath fastened as per AMC pre-engineered requirements
- Min. $\frac{3}{8}$ " (10 mm) THK. drainage mat with AMC approved drainage mat manufacturer
- Weather Resistant Barrier (WRB) as per AMC pre-engineered requirements
- Exterior grade sheathing as per AMC pre-engineered requirements
- 2x6 wood studs at 16" o.c. or 24" o.c.
- interior sheathing

Superseded in January 2021 by 19-BCV-018R1

Superseded in January 2021 by 19-BCV-018R1

Adhered Masonry Veneer with Drainage- Foundation Detail



Where the adhered masonry veneer height is to underside of roof of the first storey or when the wall cladding above and/or adjacent employs drainage:

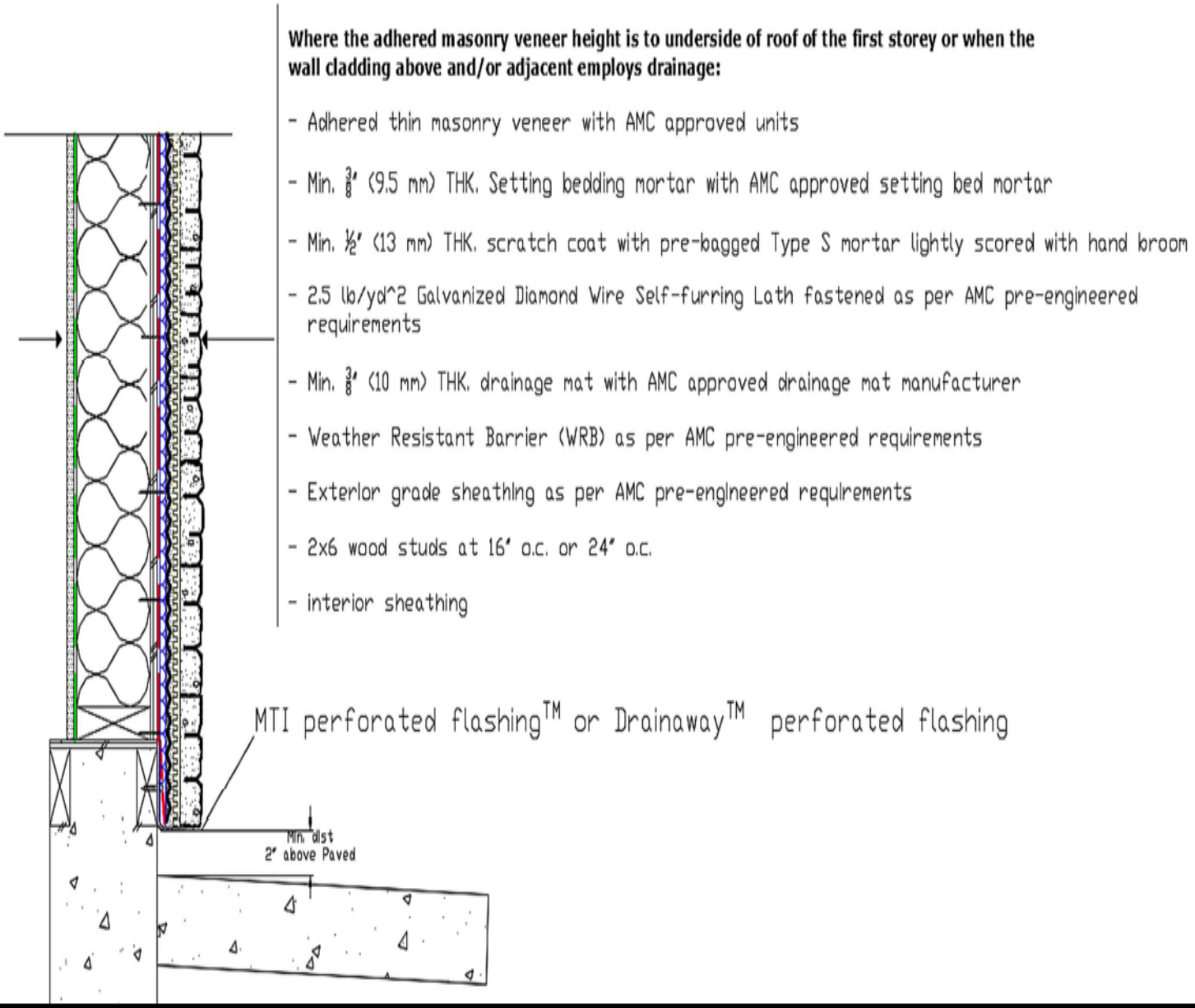
- Adhered thin masonry veneer with AMC approved units
- Min. $\frac{3}{8}$ " (9.5 mm) THK. Setting bedding mortar with AMC approved setting bed mortar
- Min. $\frac{1}{2}$ " (13 mm) THK. scratch coat with pre-bagged Type S mortar lightly scored with hand broom
- 2.5 lb/yd² Galvanized Diamond Wire Self-furring Lath fastened as per AMC pre-engineered requirements
- Min. $\frac{3}{8}$ " (10 mm) THK. drainage mat with AMC approved drainage mat manufacturer
- Weather Resistant Barrier (WRB) as per AMC pre-engineered requirements
- Exterior grade sheathing as per AMC pre-engineered requirements
- 2x6 wood studs at 16" o.c. or 24" o.c.
- interior sheathing

MTI perforated flashing™ or Drainaway™ perforated flashing

Min. dist
4" above Soil
2" above Paved

Adhered Masonry Veneer with Drainage -
Base of Wall Detail I (Wall on Curb)

Superseded in January 2021 by 19-BCV-018R1

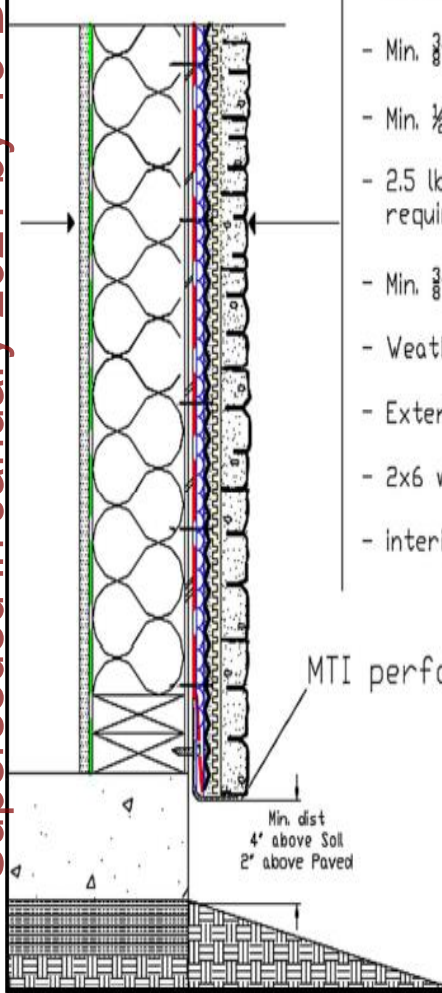


Adhered Masonry Veneer with Drainage - Base of Wall Detail II (Walk-out basement)

Superseded in January 2021 by 19-BCV-018R1

Where the adhered masonry veneer height is to underside of roof of the first storey or when the wall cladding above and/or adjacent employs drainage:

- Adhered thin masonry veneer with AMC approved units
- Min. $\frac{3}{8}$ " (9.5 mm) THK. Setting bedding mortar with AMC approved setting bed mortar
- Min. $\frac{1}{2}$ " (13 mm) THK. scratch coat with pre-bagged Type S mortar lightly scored with hand broom
- 2.5 lb/yd² Galvanized Diamond Wire Self-furring Lath fastened as per AMC pre-engineered requirements
- Min. $\frac{3}{8}$ " (10 mm) THK. drainage mat with AMC approved drainage mat manufacturer
- Weather Resistant Barrier (WRB) as per AMC pre-engineered requirements
- Exterior grade sheathing as per AMC pre-engineered requirements
- 2x6 wood studs at 16" o.c. or 24" o.c.
- Interior sheathing



MTI perforated flashing™ or Drainaway™ perforated flashing

Min. dist
 4' above Soil
 2' above Paved