

Pneumococcal 20-valent Conjugate Vaccine (Pneu-C20): Prevnar 20™ in Pharmacy

Implementation date: July 1, 2024

Background

Beginning July 1, 2024, Pneumococcal 20-valent Conjugate Vaccine or Prevnar 20™ (Pneu-C20) will be used in the prevention of invasive pneumococcal disease (IPD) for eligible Albertans **18 years of age and older** as part of Alberta's provincially funded immunization program offered through pharmacies. The Pneumococcal Polysaccharide 23-valent vaccine (Pneumo-P) will no longer be available as part of the Alberta Immunization Program and the policy for the use of and eligibility for provincially funded Pneu-C20 is new.

Eligibility Criteria

1. Populations at increased risk for invasive pneumococcal disease ([Table 1](#)) who are **18 years of age and older** are eligible for one dose of Pneu-C20, if they have not previously received pneumococcal vaccine dose(s), including a dose of Pneu-C20.
 - If a patient is deemed eligible for Pneu-C20, vaccine can be offered. It would be prudent to also refer the patient to Alberta Health Services (AHS) as they may require additional vaccines.
 - Patients who are Hematopoietic Stem Cell Transplants (HSCT) recipients or Solid Organ Transplant (SOT) recipients should NOT be provided Pneu-C20 at a pharmacy but instead be referred to AHS Public Health for their vaccine for a thorough immunization assessment. It is likely that these patients will require additional vaccines that align with a schedule already established by AHS public health.
2. Patients **65 years of age and older who are not included in the populations listed in [Table 1](#) AND** who have not previously received a dose of Pneumo-P (at 65 years of age or older) or a previous dose of Pneu-C20.
 - Patients 65 years of age or older who have already received at least one dose of Pneumo-P vaccine, are considered complete and not currently eligible for Pneu-C20.
 - Patients who have already received at least one dose of Pneu-C20 (regardless of their age when they received it) are considered complete and not eligible for another dose of Pneu-C20.

Please see the [decision tree below \(Appendix A\)](#) to establish eligibility criteria for Pneu-C20, for patients who are at an increased risk for IPD.

Pneu-C20 Vaccine Spacing Considerations

For those who are eligible for Pneu-C20 vaccine:

- If any dose of Pneu-C20 has been received previously, no matter the age of the patient when the vaccine was received, the patient is considered completed and no additional doses are required.
- Pneu-C20 should be given at least one year following a Pneumo-P dose.
- Pneu-C20 should be given at least 8 weeks following Prevnar®13 (Pneu-C13) or Vaxneuvance® (Pneu-C15).

Additional Resources

For more detailed policy information regarding the Pneu-C20 vaccine, refer to [Pneumococcal Vaccine, 20-valent Conjugate](#) in the [Alberta Immunization Policy](#).

Please refer to the Alberta Blue Cross Benefact for billing, reporting and vaccine ordering information.

For questions regarding the Pneu-C20 policy, email health.imm@gov.ab.ca.

Pneumococcal 20-valent Conjugate Vaccine(Pneu-C20): Prevnar 20™ in Pharmacy

Table 1 Populations at increased risk for invasive pneumococcal disease

Populations with sustained high rates of IPD:

- Residents of continuing care homes and senior supportive living accommodations
- First Nations, Métis, and Inuit peoples, regardless of where they live

Individuals with the following medical conditions:

- Asplenia/hyposplenism (functional or anatomic)
- Chronic cardiac disease (including congenital heart disease and cyanotic heart disease)
- Chronic cerebral spinal fluid (CSF) leak
- Chronic liver disease (including biliary atresia, fatty liver, hepatitis B and C and hepatic cirrhosis due to any cause)
- Chronic neurologic condition that may impair clearance of oral secretions
- Chronic pulmonary disease (including asthma requiring medical treatment within the last 12 months regardless of whether they are on high dose steroids)
- Chronic renal disease, including nephrotic syndrome, on dialysis, or with renal transplant
- Cochlear implants (candidates and recipients)
- Congenital immunodeficiencies involving any part of the immune system, including B-lymphocyte (humoral) immunity, T-lymphocyte (cell) mediated immunity, complement system (properdin or factor D deficiencies) or phagocytic functions
- Diabetes mellitus
- HIV infection
- Immunosuppressive therapy including:
 - long-term use of corticosteroids,
 - chemotherapy (undergoing or anticipating),
 - radiation therapy (undergoing or anticipating),
 - post-organ transplant therapy,
 - biologic and non-biologic immunosuppressive therapies for:
 - inflammatory arthropathies, e.g., systemic lupus erythematosus (SLE), rheumatoid or juvenile arthritis,
 - inflammatory dermatological conditions, e.g., psoriasis, severe atopic dermatitis and eczema, and
 - inflammatory bowel disease, e.g., Crohn's disease, ulcerative colitis
- **Note:** Individuals prescribed eculizumab (Soliris®) or other complement C5 inhibitors) are at increased risk of serious infections, especially with encapsulated bacteria, such as *Streptococcus pneumoniae*,⁽⁵⁾ therefore, they should receive Pneu-C20 at least two weeks before receiving the first doses of complement C5 inhibitors, if possible.
- Malignant hematologic disorders (affecting the bone marrow or lymphatic system) including leukemia, lymphoma, Hodgkin's disease and multiple myeloma
- Malignant solid organ tumors either currently or within past 5 years
- Sickle-cell disease and other hemoglobinopathies

Individuals who:

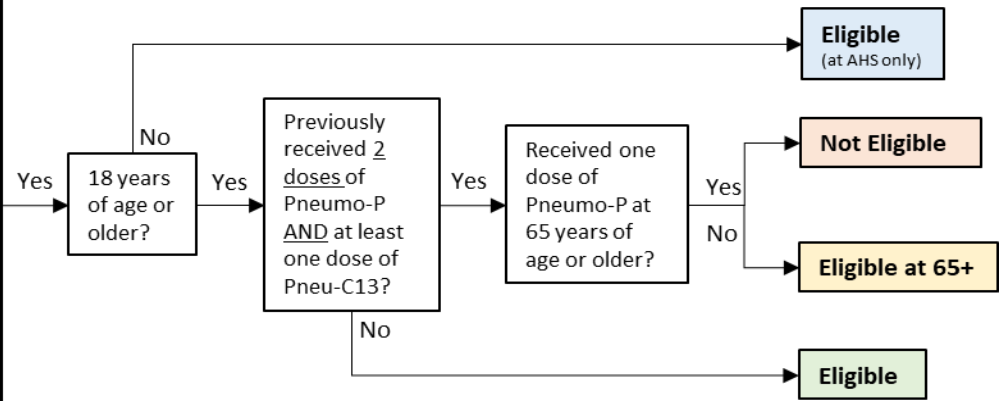
- Have an alcohol use disorder
- Use illicit drugs
- Smoke or vape
- Have poor indoor air quality in the home (including, but not limited to, second-hand smoke, wood fired stoves)
- Are experiencing houselessness
 - Definition: At the time of immunization assessment, the individual did not have an address or home (apartment, townhouse, etc.). This would include people staying in shelters, cars, etc.

APPENDIX A: Pneu-C20 Eligibility for Populations at Increased Risk of Invasive Pneumococcal Disease (IPD)

Does the individual have any of the following medical conditions?

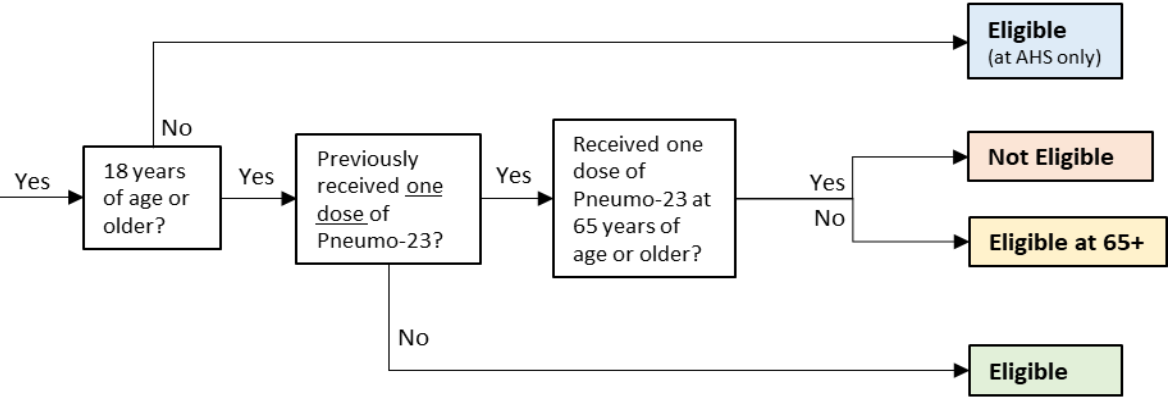
- Asplenia/hyposplenism (functional or anatomic)
- Chronic renal disease, including nephrotic syndrome, on dialysis, or with renal transplant.
- Congenital immunodeficiencies involving any part of the immune system, including B-lymphocyte (humoral) immunity, T-lymphocyte (cell) mediated immunity, complement system (properdin or factor D deficiencies) or phagocytic functions.
- HIV infection.
- Immunosuppressive therapy including:
 - long-term use of corticosteroids,
 - chemotherapy (undergoing or anticipating),
 - radiation therapy (undergoing or anticipating),
 - post-organ transplant therapy,
 - biologic and non-biologic immunosuppressive therapies for:
 - inflammatory arthropathies, e.g., systemic lupus erythematosus (SLE), rheumatoid or juvenile arthritis,
 - inflammatory dermatological conditions, e.g., psoriasis, severe atopic dermatitis and eczema, and
 - inflammatory bowel disease, e.g., Crohn’s disease, ulcerative colitis
- Malignant hematologic disorders (affecting the bone marrow or lymphatic system) including leukemia, lymphoma, Hodgkin’s disease and multiple myeloma.
- Malignant solid organ tumors either currently or within past 5 years.
- Sickle-cell disease and other hemoglobinopathies.

NOTE: Individuals 18 years of age and older who have received one dose of Pneu-C20 are considered complete, and do not need to be assessed through the algorithm.

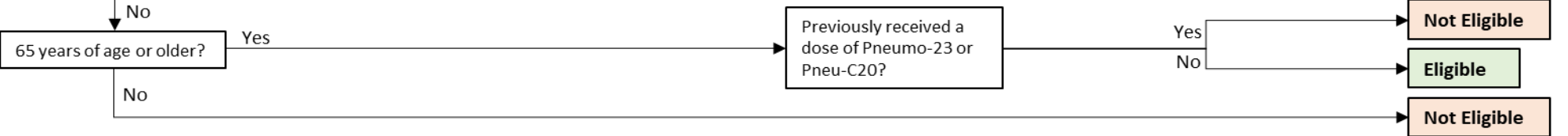


Does the individual meet any of the following criteria?

<p><u>Is a member of populations with sustained high rates of IPD:</u></p> <ul style="list-style-type: none"> • First Nations, Métis, and Inuit peoples, regardless of where they live • Resident of continuing care homes and senior supportive living accommodations 	<p>OR</p>	<p><u>Has any of the medical conditions listed below:</u></p> <ul style="list-style-type: none"> • Chronic cardiac disease (including congenital heart disease and cyanotic heart disease) • Chronic cerebral spinal fluid (CSF) leak • Chronic liver disease (including biliary atresia, fatty liver, hepatitis B and C and hepatic cirrhosis due to any cause) • Chronic neurologic condition that may impair clearance of oral secretions • Chronic pulmonary disease (including asthma requiring medical treatment within the last 12 months regardless of whether they are on high dose steroids) • Cochlear implants (candidates and recipients) • Diabetes mellitus 	<p>OR</p>	<p><u>Is an individual who:</u></p> <ul style="list-style-type: none"> • Has an alcohol use disorder • Uses illicit drugs • Smokes or vapes • Has poor air quality in the home (including, but not limited to, second-hand smoke, wood fired stoves) • Is experiencing homelessness
--	------------------	---	------------------	--



NOTE: For Solid Organ Transplant (SOT) or Hematopoietic Stem Cell Transplants (HSCT) recipients refer to AHS Public Health.



Pneumococcal 20-valent Conjugate Vaccine(Pneu-C20): Prevnar 20™ in Pharmacy