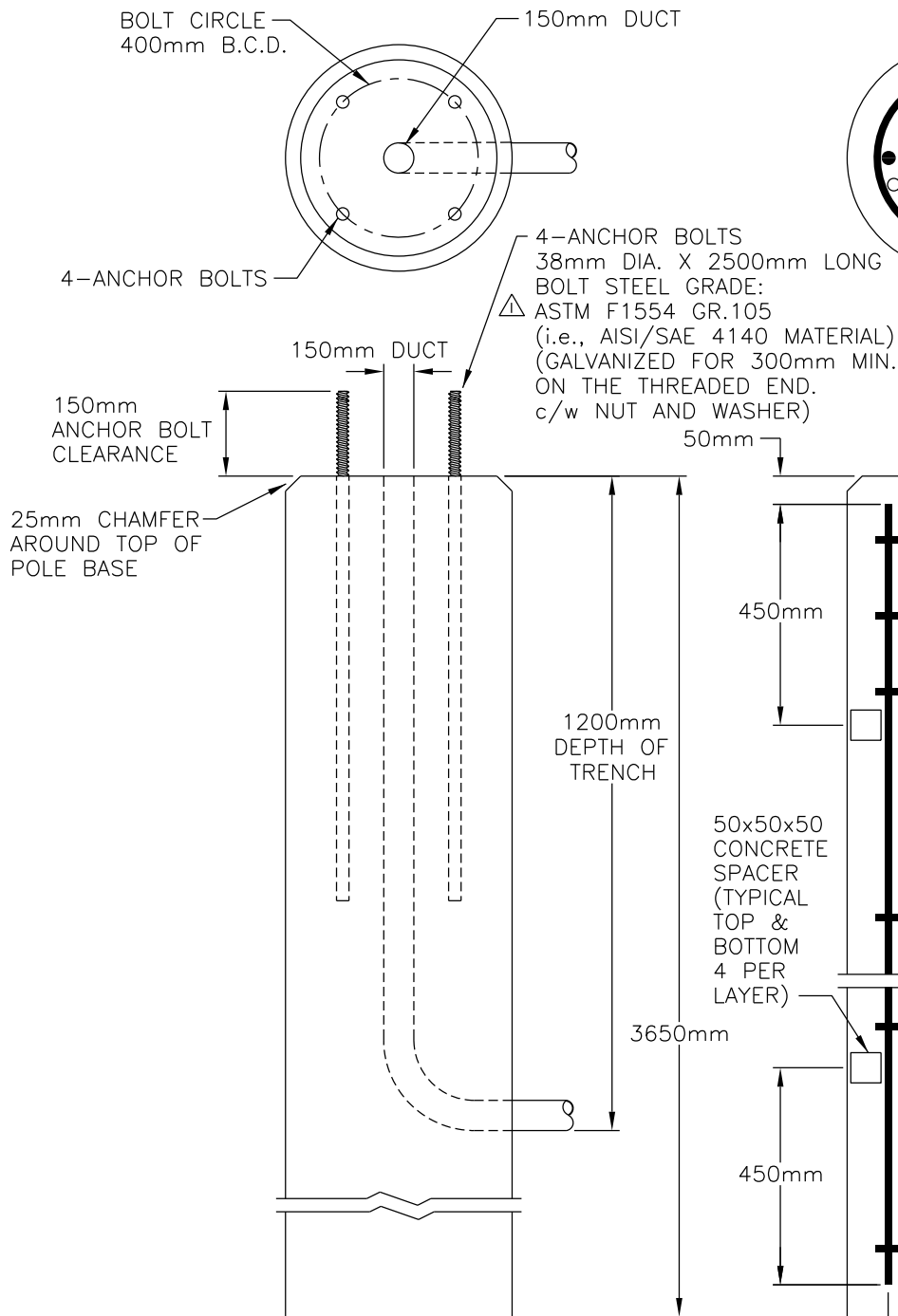
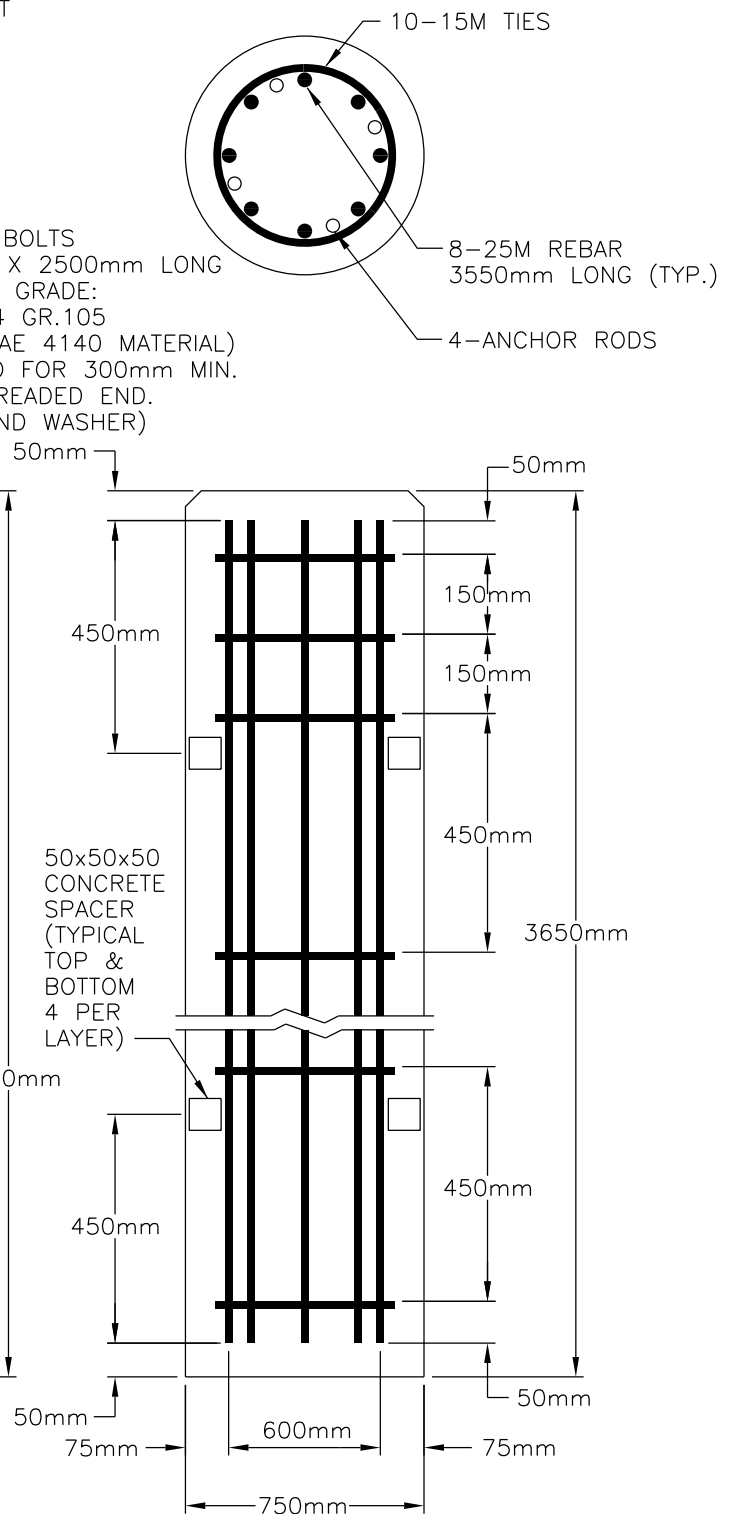


## ANCHOR BOLT LAYOUT





## REBAR LAYOUT



### NOTES:

1. THE CONCRETE USED SHALL BE 30 MPa.
2. FINISHED AS CAST.

	Bolt steel grade added.	E.Y.	Jan/17
NO.	REVISION	BY	DATE
Approved:			
Director of Maintenance, Specifications and Traffic Engineering			
Date: March 18, 2003			
<b>CAST-IN-PLACE CONCRETE TRAFFIC POLE BASE SIGNAL POLE w/ARM &lt;=11m, ADVANCE WARNING SIGNAL POLE w/ARM &lt;=9m</b>			
Prepared By:	Checked By:	Scale: None	<b>TCS-F-305.1</b>