

Alberta Farm Input Prices



Average Monthly Prices for September 2015

Farm Input Prices - Dollars (\$)	September 2014	August 2015	September 2015
Construction Grade Lumber, 2x6, spruce, M	552.70	551.39	629.17
Rough Grade Lumber, 2x8, spruce, M	563.60	601.01	655.83
Sheathing, plywood, spruce, unsanded, 9.6 mm, 4'x8' sheet	17.86	17.89	17.97
Fence Posts, standard grade, treated, 3-4" diameter, 7' length	5.14	5.28	5.57
Ready-Mix Concrete, 20 mpa strength, cubic metre	218.54	224.10	225.60
Nails, standard grade, 4" spiral, 50 lb box	73.44	77.10	77.05
Pipe, plastic, 1" diameter, 75 psi, 100' coil	57.53	58.33	60.04
Rods, steel reinforcing, 10 mm, 6 metre length	6.51	6.10	6.13
Barbed Wire, 12 gauge, double strand, 40 kg, 80 rod spool	66.89	67.86	68.56
Grain Bin, hopper bottom included, 4,000 bushel capacity, each *	15,194.41	15,869.94	15,541.12
Truck Tires, 1st line, blackwall, LT285-70R-17 Radial (environmental tax included), each	291.43	290.00	289.21
Storage Battery, 12 volt, 24 series, 525 cranking amps, each	98.83	99.97	100.57
V-Belt - Implement, 1/2" x 70", fibre, each	13.29	13.24	13.16
Antifreeze, ethylene glycol, anti-corrosion, 4 litre	15.59	14.92	15.22
Mechanical Repairs, for farm machinery, shop & labour, per hour	115.82	124.67	122.81
Baler Twine, plastic, for round baler, 28,000' bale	31.61	31.78	32.77
General Farm Labour, full-time, without board, per month	3,167.00	3,320.00	3,335.79
Tractor, FWD, 105-130 hp, 6 cylinder diesel, 12-24 speed transmission, new, each	116,393.09	128,886.58	131,375.53
Tractor, 4WD, 325-375 hp, 6-8 cylinder diesel, 12-18 speed transmission, new, each	299,525.49	345,896.16	350,031.48
Combine, self-prop, diesel, Class 7, 323-374 hp, new, each *	377,591.19	380,859.73	410,459.94
Air Drill, 40-42', 3 compartment tank, no variable rate, new, each *	240,661.12	263,679.16	250,540.89
Sprayer, pull-type, 800-900 gallon tank, 90-100' boom, new, each	63,637.20	68,589.43	66,775.27
Round Baler, pull-type, P.T.O. driven, 5'x6' hard core bale, new, each	50,091.63	57,199.55	52,093.27
Double Disc, heavy-duty tandem, 19-21', 22" blades, new, each	48,233.55	52,943.61	54,024.05
3/4 Ton Truck, V-8, 5.4L or 5.9L engine, 4X4, 4 speed automatic transmission, new, each	41,119.18	44,092.82	44,851.65
Calf-starter Ration, pellets, 13-20%, bagged, 25 kg *	14.44	15.31	15.14
Dairy Supplement, pellets, 32%, bagged, 25 kg *	18.81	18.59	19.01
Feedlot Supplement, pellets, 32%, (excl. Ionophore), bagged, 25 kg *	14.66	16.30	16.07
Hog Grower Ration, pellets, 15-17%, bagged, 25 kg *	14.83	15.42	15.45
Swine Supplement, pellets, 35-40%, bagged, 25 kg *	20.67	19.97	19.93
Broiler Grower Complete Feed, 18-20%, bagged, 25 kg *	15.46	17.02	16.33
Cattle Mineral, salt-free, 18% Phosphorus & 18% Calcium, 20 kg *	28.41	30.28	30.49
Feed Barley, No. 1, non-board, farm gate, bushel	3.46	3.95	3.89
Feed Wheat, No. 1, non-board, farm gate, bushel	4.29	4.89	5.13
Feed Oats, good quality, farm gate, bushel **	2.52	2.75	2.62
Hay, good quality, over 50% Alfalfa, farm gate, ton	93.45	173.68	135.53
Fertilizer, 46-0-0, Urea, bulk, tonne	589.86	570.75	553.00
Fertilizer, 11-51-0, bulk, tonne	770.64	794.50	806.00
Fertilizer, 82-0-0, Anhydrous Ammonia, full service with applicator, bulk, tonne	1,008.06	1,013.46	998.92
Refine SG granular, 486 gram *	276.88	277.55	278.55
Assert 300 SC, liquid, 10.8 litre	224.20	233.09	233.52
Roundup WWeatherMAX, liquid, 10 litre	75.00	76.09	74.77
Penicillin, Procaine Penicillin G, injectable, short-acting, 300 mg/ml, 250 ml	19.94	21.81	19.99
Vitamin AD with E, injectable, IU/cc: A:500,000 D:75,000 E:50, 250 ml	27.81	27.18	27.15
Seed, Wheat, Certified No. 1, bulk, 100 kg	50.27	50.58	50.48
Seed, Barley, Certified No. 1, bulk, 100 kg	39.88	38.67	39.54
Seed, Roundup Ready HT Canola, Certified No. 1, treated, bagged, 22.7 kg **	465.53	454.78	456.54
Seed, Liberty Link HT Canola, Certified No. 1, treated, bagged, 22.7 kg **	595.52	596.76	597.11
Purple Gasoline, regular unleaded, marked farm fuel, 100 litres	106.18	92.14	89.03
Diesel Fuel, marked farm fuel, (provincial allowance deducted), 100 litres	107.93	83.90	82.01
Propane, liquefied, bulk, 100 litres	71.95	69.80	62.05
Natural Gas, (excluding service or delivery charge, prov. rebate deducted where applicable), GJ	3.91	2.97	3.18
Electricity, farm use, (excluding service or delivery charge), 100 kwh	8.14	6.72	5.46
Oil, for diesel engines, 15W-40, (environmental tax included), 5 litre *	20.13	19.73	20.75

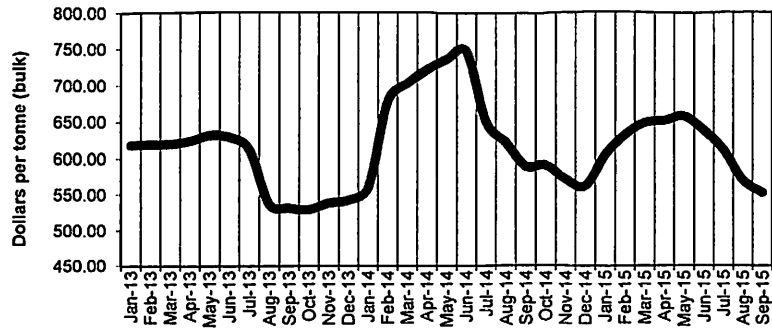
All agricultural inputs were reported to be in good supply for the month of September 2015 with the exception of general farm labour and hay in some areas of the province. The prices reported are simple averages for the province in Canadian Dollars (\$), and are based on a survey conducted in the first week of each month.

* Specification changed as of January 2012 ** New input as of January 2012

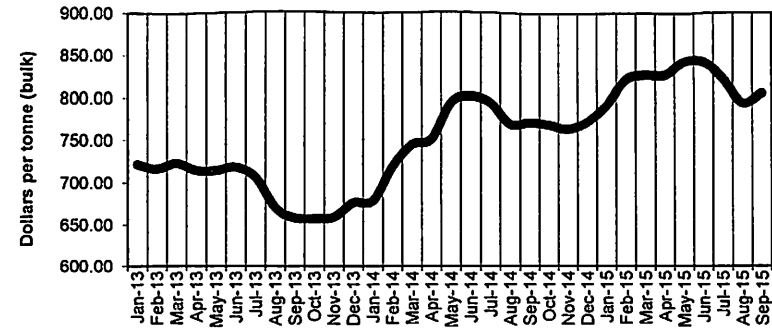
Source: Alberta Agriculture and Forestry, Economics and Competitiveness Division, Statistics and Data Development Branch, in partnership with Alberta Federation of Agriculture. For additional information, please phone: 780-427-4011.

Note to Users: The contents of this document may not be used or reproduced without properly accrediting Alberta Agriculture and Forestry, Economics and Competitiveness Division, Statistics and Data Development Branch.

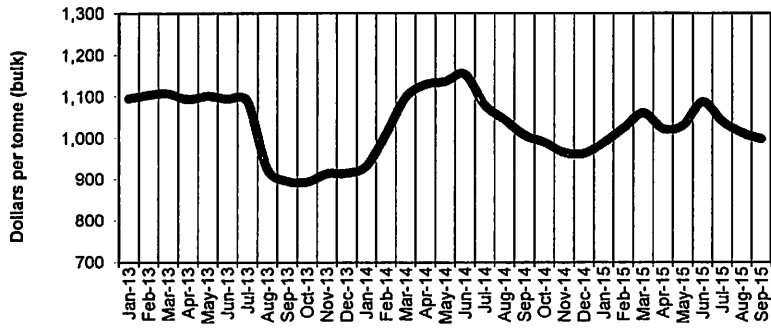
FERTILIZER, 46-0-0
Alberta, Monthly 2013 - 2015



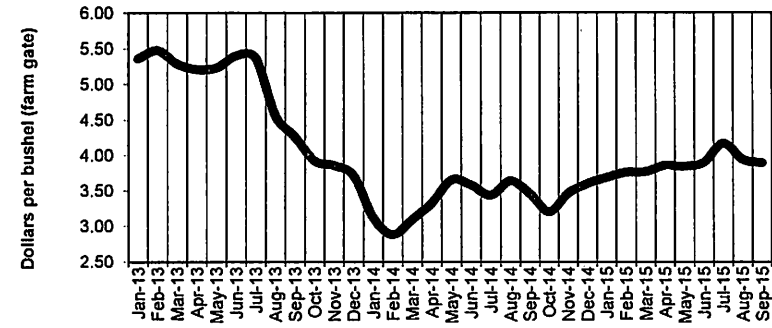
FERTILIZER, 11-51-0
Alberta, Monthly 2013 - 2015



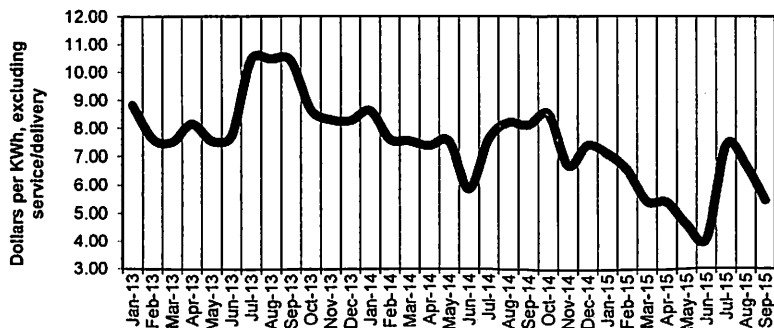
FERTILIZER, 82-0-0
Alberta, Monthly 2013 - 2015



FEED BARLEY, NO. 1, NON-BOARD
Alberta, Monthly 2013 - 2015



ELECTRICITY, FARM USE
Alberta, Monthly 2013 - 2015



FEED WHEAT, NO. 1, NON-BOARD
Alberta, Monthly 2013 - 2015

