

# Alberta Farm Input Prices



## Average Monthly Prices for March 2015

Farm Input Prices - Dollars (\$)	March 2014	February 2015	March 2015
Construction Grade Lumber, 2x6, spruce, M	532.33	556.25	556.38
Rough Grade Lumber, 2x8, spruce, M	561.64	555.57	556.94
Sheathing, plywood, spruce, unsanded, 9.6 mm, 4'x8' sheet	16.42	18.23	18.13
Fence Posts, standard grade, treated, 3-4" diameter, 7' length	4.54	5.32	5.20
Ready-Mix Concrete, 20 mpa strength, cubic metre	212.85	225.95	224.06
Nails, standard grade, 4" spiral, 50 lb box	76.84	73.20	73.02
Pipe, plastic, 1" diameter, 75 psi, 100' coil	55.57	58.29	58.90
Rods, steel reinforcing, 10 mm, 6 metre length	6.66	6.17	6.17
Barbed Wire, 12 gauge, double strand, 40 kg, 80 rod spool	66.93	65.71	65.64
Grain Bin, hopper bottom included, 4,000 bushel capacity, each *	14,646.35	15,531.36	16,003.73
Truck Tires, 1st line, blackwall, LT285-70R-17 Radial (environmental tax included), each	296.49	289.12	290.15
Storage Battery, 12 volt, 24 series, 525 cranking amps, each	96.91	101.11	101.68
V-Belt - Implement, 1/2" x 70", fibre, each	12.91	13.18	13.21
Antifreeze, ethylene glycol, anti-corrosion, 4 litre	14.15	14.59	14.55
Mechanical Repairs, for farm machinery, shop & labour, per hour	114.05	117.64	118.23
Baler Twine, plastic, for round baler, 28,000' bale	32.07	31.20	31.97
General Farm Labour, full-time, without board, per month	3,051.67	3,230.53	3,303.95
Tractor, FWD, 105-130 hp, 6 cylinder diesel, 12-24 speed transmission, new, each	112,793.09	122,029.94	122,975.59
Tractor, 4WD, 325-375 hp, 6-8 cylinder diesel, 12-18 speed transmission, new, each	280,327.54	330,796.65	333,565.75
Combine, self-prop, diesel, Class 7, 323-374 hp, new, each *	357,467.18	380,623.29	391,484.00
Air Drill, 40-42', 3 compartment tank, no variable rate, new, each *	210,135.82	255,622.08	255,813.53
Sprayer, pull-type, 800-900 gallon tank, 90-100' boom, new, each	58,295.77	67,724.08	65,206.66
Round Baler, pull-type, P.T.O. driven, 5'x6' hard core bale, new, each	47,265.15	49,781.16	49,985.56
Double Disc, heavy-duty tandem, 19-21', 22" blades, new, each	44,637.98	50,024.05	49,910.45
3/4 Ton Truck, V-8, 5.4L or 5.9L engine, 4X4, 4 speed automatic transmission, new, each	40,389.67	41,556.63	41,849.55
Calf-starter Ration, pellets, 13-20%, bagged, 25 kg *	14.52	14.23	14.30
Dairy Supplement, pellets, 32%, bagged, 25 kg *	20.22	18.99	18.89
Feedlot Supplement, pellets, 32%, (excl. Ionophore), bagged, 25 kg *	14.16	15.92	16.30
Hog Grower Ration, pellets, 15-17%, bagged, 25 kg *	12.57	15.47	15.73
Swine Supplement, pellets, 35-40%, bagged, 25 kg *	21.15	20.64	20.39
Broiler Grower Complete Feed, 18-20%, bagged, 25 kg *	13.18	17.12	17.33
Cattle Mineral, salt-free, 18% Phosphorus & 18% Calcium, 20 kg *	28.14	29.12	28.67
Feed Barley, No. 1, non-board, farm gate, bushel	3.10	3.76	3.77
Feed Wheat, No. 1, non-board, farm gate, bushel	4.32	4.63	4.64
Feed Oats, good quality, farm gate, bushel **	2.48	2.51	2.59
Hay, good quality, over 50% Alfalfa, farm gate, ton	89.44	94.35	95.95
Fertilizer, 46-0-0, Urea, bulk, tonne	702.50	632.52	649.25
Fertilizer, 11-51-0, bulk, tonne	745.10	821.50	826.70
Fertilizer, 82-0-0, Anhydrous Ammonia, full service with applicator, bulk, tonne	1,099.00	1,024.13	1,061.07
Refine SG granular, 486 gram *	271.24	276.34	277.31
Assert 300 SC, liquid, 10.8 litre	238.00	231.71	229.30
Roundup WeatherMAX, liquid, 10 litre	65.01	74.72	74.21
Penicillin, Procaine Penicillin G, injectable, short-acting, 300 mg/ml, 250 ml	16.11	20.52	20.45
Vitamin AD with E, injectable, IU/cc: A:500,000 D:75,000 E:50, 250 ml	27.08	26.48	27.61
Seed, Wheat, Certified No. 1, bulk, 100 kg	49.29	49.63	50.30
Seed, Barley, Certified No. 1, bulk, 100 kg	41.93	38.79	38.36
Seed, Roundup Ready HT Canola, Certified No. 1, treated, bagged, 22.7 kg **	480.80	468.99	471.38
Seed, Liberty Link HT Canola, Certified No. 1, treated, bagged, 22.7 kg **	595.45	591.03	589.13
Purple Gasoline, regular unleaded, marked farm fuel, 100 litres	105.03	81.93	85.81
Diesel Fuel, marked farm fuel, (provincial allowance deducted), 100 litres	117.15	93.45	95.26
Propane, liquefied, bulk, 100 litres	64.63	69.70	70.85
Natural Gas, (excluding service or delivery charge, prov. rebate deducted where applicable), GJ	8.64	2.83	2.92
Electricity, farm use, (excluding service or delivery charge), 100 kwh	7.55	6.52	5.41
Oil, for diesel engines, 15W-40, (environmental tax included), 5 litre *	20.87	20.05	20.07

All agricultural inputs were reported to be in good supply for the month of March 2015 with the exception of general farm labour in some areas of the province. The prices reported are simple averages for the province in Canadian Dollars (\$), and are based on a survey conducted in the first week of each month.

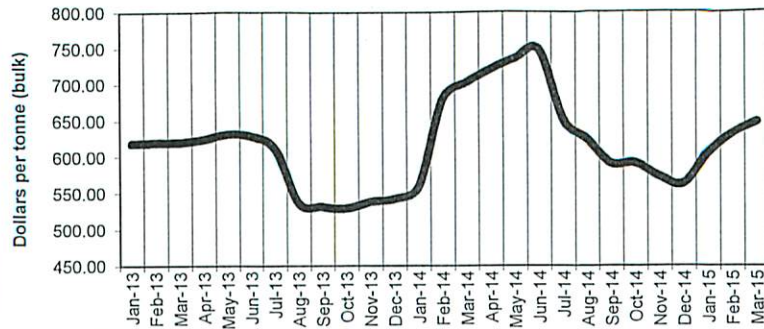
\* Specification changed as of January 2012 \*\* New input as of January 2012

Source: Alberta Agriculture and Rural Development, Economics and Competitiveness Division, Statistics and Data Development Branch, in partnership with Alberta Federation of Agriculture. For additional information, please phone: 780-427-4011.

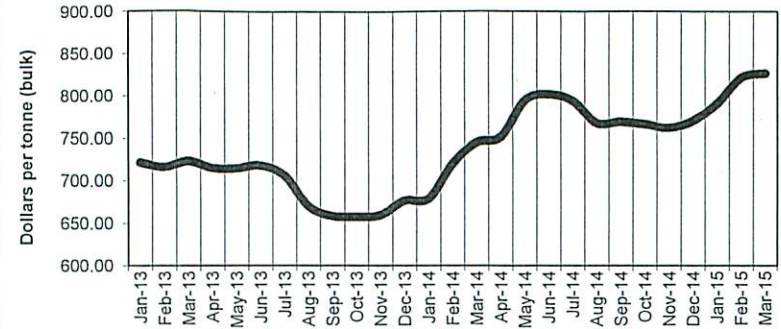
Note to Users: The contents of this document may not be used or reproduced without properly accrediting Alberta Agriculture and Rural Development, Economics and Competitiveness Division, Statistics and Data Development Branch.



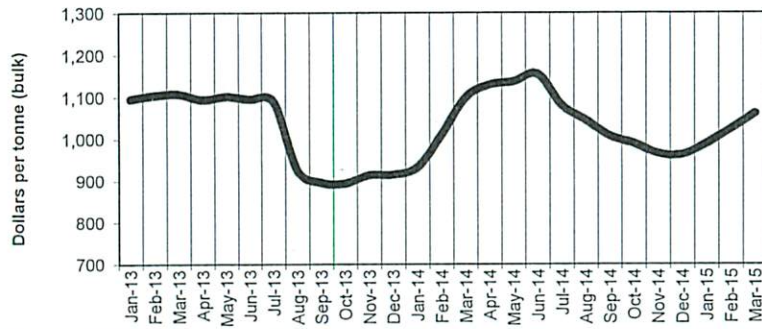
**FERTILIZER, 46-0-0**  
Alberta, Monthly 2013 - 2015



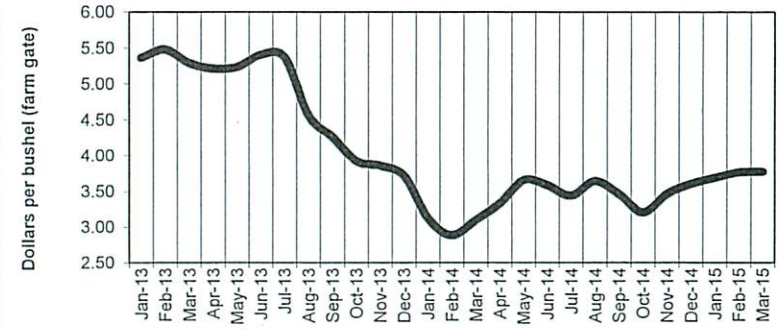
**FERTILIZER, 11-51-0**  
Alberta, Monthly 2013 - 2015



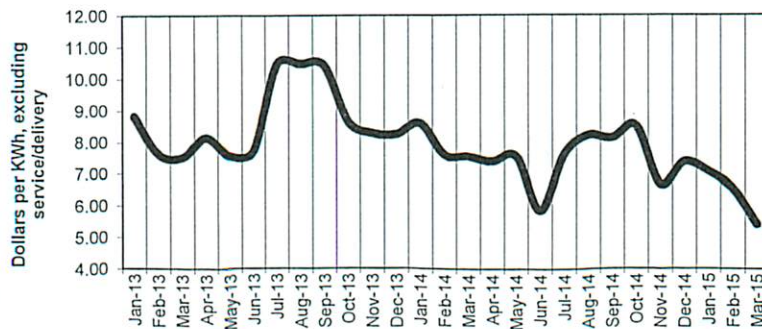
**FERTILIZER, 82-0-0**  
Alberta, Monthly 2013 - 2015



**FEED BARLEY, NO. 1, NON-BOARD**  
Alberta, Monthly 2013 - 2015



**ELECTRICITY, FARM USE**  
Alberta, Monthly 2013 - 2015



**FEED WHEAT, NO. 1, NON-BOARD**  
Alberta, Monthly 2013 - 2015

